

# Fungi occurring on waterhyacinth (*Eichhornia crassipes* [Martius] Solms-Laubach) in Niger River in Mali and their evaluation as mycoherbicides

KARIM DAGNO, RACHID LAHLALI, MAMOUROU DIOURTÉ, AND M. HAÏSSAM JIJAKLI<sup>1</sup>

## ABSTRACT

We recovered 116 fungal isolates in 7 genera from waterhyacinth plants having pronounced blight symptoms collected in Mali. Isolation frequency of the genera was *Curvularia* (60.32%), *Fusarium* (42.92%), *Alternaria* (11.6%), *Coniothyrium* (11.6%), *Phoma* (3.48%), *Stemphylium* (3.48%), and *Cadophora* (1.16%). On the basis of *in vivo* pathogenicity tests in which the diseased leaf area percentage and disease severity were visually estimated using a disease severity index, three isolates, *Fusarium* sp. Mln799, *Cadophora* sp. Mln715, and *Alternaria* sp. Mlb684 caused severe disease. These were later identified as *Gibberella sacchari* Summerell & J.F. Leslie, *Cadophora malorum* (Kidd & Beaumont) W. Grams, and *Alternaria* sp. respectively. This is the first report to highlight *C. malorum* as a candidate biocontrol agent against waterhyacinth. Neither *C. malorum* Mln715 nor *Alternaria* sp. Mlb684 in host specificity tests showed any pathogenicity toward 17 crop plants of economic importance in Mali.

**Key Words:** biocontrol agents, mycoherbicide, native fungi, waterhyacinth.

## INTRODUCTION

Waterhyacinth (*Eichhornia crassipes* [Martius], Solms-Laubach; *Pontederiaceae*) is a free-floating aquatic weed, native to the Amazon Basin in South America (Morsy 2004) distributed across the tropics and subtropics between 39°N and 39°S (Téllez et al. 2008). Man has clearly been the main agent responsible for spreading this species around the world, as its entry into Africa, Asia, Australia, and North America coincided with the arrival of the vessels of the first explorers or with historically documented human activities (Shabana 1997).

Waterhyacinth is considered the world's worst aquatic weed (Lata and Dubey 2010). As in many tropical and subtropical regions worldwide, waterhyacinth creates serious agricultural and navigation problems in District of Bamako in Mali (Figure 1). The plant not only affects irrigation, water flow, water use, and navigation, it also poses a health risk by

enabling the breeding of mosquitoes, bilharzias, and other human parasites (Adebayo and Uyi 2010). Water quality is affected as well, by the increasing accumulation of detritus in the water (Morsy 2004). Fishing can be affected because of the competitive advantage given to trash fish species in weed-infested waters. In many instances, fish are killed when oxygen levels are depleted through plant respiration and decomposition of senescent vegetation. The waterhyacinth infestation is particularly severe in the Delta of Niger and in all irrigation systems of the Office of Niger (ON) according to Dembélé (1994). Several billion dollars are spent each year by the Office du Niger and Energie du Mali to control this weed in the Niger River (Dagno et al. 2007).

Chemical, physical, and biological means are used to control waterhyacinth infestations. In Mali, chemical (2-4, D) and mechanical control methods have been used since 1997 to manage this weed (Dembélé and Diarra 1997); however, these methods provide only a temporary management solution. Chemical methods can be dangerous for humans as well as animals because people drink river water in Mali and use it to prepare food. For this reason, and in a sustainable management perspective, an integrated approach seems necessary. In recent years, attention has focused on biological control, which could provide a cost-effective, environmentally safe solution to the waterhyacinth problem. The biological control of weeds by means of plant pathogens has gained acceptance as a practical, safe, and environmentally beneficial weed management method applicable to agro-ecosystems (Charudattan 2005, Boyette et al. 2007). Most emphasis has been on fungal pathogens as biocontrol agents (Vincent 2001, Shabana 2005). Several highly virulent fungi are known to cause diseases of waterhyacinth, the best known being *Acremonium zonatum* (Sawada) W. Gams, *Alternaria alternata* (Fr.) Keissler, *A. eichhorniae* Nag Raj & Ponnappa, *Bipolaris* spp., *Fusarium chlamydosporum* Wollenw & Reinking, *Helminthosporium* spp., *Cercospora piaropi* Tharp, *Myrothecium roridum* Tode ex fr., *Rhizoctonia solani* Kühn, and *Uredo eichhorniae* Gonz.-Frag. & Cif. (Charudattan 2001, Morsy 2004, Naseema et al. 2004). Among these, *A. eichhorniae*, *C. piaropi*, *A. alternata*, and *F. chlamydosporum* have been studied most extensively (Babu et al. 2002, Shabana 2005).

The aim of this study was to survey and identify indigenous phytopathogenic fungal isolates of waterhyacinth in Mali, with a view to developing them as bioherbicides. We report

<sup>1</sup>First and fourth authors: Plant pathology unit, Gembloux Agro-Bio Tech, Passage des Déportés 2, B-5030 Gembloux, University of Liege - Belgium. First and third authors: Programme Sorgho, Centre Régional de Recherche Agronomique de Sotuba, BP : 262, Bamako, Mali; Second author: Agriculture and Agri-Food Canada, Saskatoon Research Centre, 107 Science Place, S7N 0X2 - Canada. Corresponding author E-mail: karimdagno@yahoo.fr. Received for publication October 8, 2010 and in revised form June 7, 2011.





Figure 1. Niger River infested by waterhyacinth in District of Bamako.

on the occurrence, pathogenicity, and host specificity of the significant fungal waterhyacinth pathogens found in 2006 and 2007 in Mali.

## MATERIALS AND METHODS

### Habitat

The study areas were located in the District of Bamako, Segou, and Niono regions with GPS coordinates 12° 40'N, 7° 59'W; 13° 26'N, 6° 15'W; and 14° 15'N, 5° 59'W, respectively. The Region of Niono is the main area for irrigated rice culture and vegetable and fruit productions. Areas of Bamako, Segou, and Niono have different climates. Indeed, Bamako (South of Mali) has five rainy months with 70% relative humidity (RH), Segou (Middle of Mali) has four rainy months with 60% RH, and Niono (Nord-East of Mali) has three rainy

months with 55% RH (yearly averages). All of these regions are infested with waterhyacinth.

### Sampling procedure, isolation, and fungal identification

From 2006 to 2007, 1000 samples consisting of infected parts of waterhyacinth (petiole and leaf) were collected from the River Niger in the District of Bamako (Sites 1, 2, and 3, about 3 km apart), Sebougou Lake in Segou (Site 4), and the evacuation canal of wastewater from households (a reservoir for irrigation) in Niono (Site 5). Samples were transported to the laboratory in clean plastic bags and stored at 4 C until examined.

Stored plant parts were scrubbed under running water to remove surface debris, dissected into small segments (approximately 1 × 1 cm), and surface-sterilized by sequential immersion in 96% ethanol for 30 sec, 14% hypochlorite for 30 sec, and then rinsed in sterile water for 1 min. Surface-

*J. Aquat. Plant Manage.* 50: 2012.



sterilized segments (4 segments per plate) were plated on potato dextrose agar (PDA, Merck, Darmstadt, Germany) supplemented with 0.5 mg streptomycin. Three plates were used for petioles and leaves. The plates were incubated at 25 C for 5 to 7 d. Fungi that developed on the plant pieces were isolated, and pure cultures were obtained by the single-spore or hyphal-tip technique, depending on the type of fungal isolate.

Identification of the different fungal genera was based on morphological characteristics of each growing microbial colony as described by Lacap et al. (2003) and Ainsworth et al. (1973). According to Martínez and Charudattan (1998), fungi having rapid growth and sporulation on PDA plates in 24-48 hours were excluded from our fungal collection. They demonstrated some distinctive characteristics of saprophytes. So, isolates in the genera *Penicillium*, *Aspergillus*, and *Trichoderma* were excluded from further consideration after their initial isolation. The retained fungal isolates were identified by the Industrial Fungal & Yeast collection (BCCM/MUCL-Louvain-la-Neuve, Belgium).

Based on their frequency of occurrence, the isolated fungal genera were classified as very frequent (>20%), frequent (10-20%), or infrequent (<10%), as reported by Morsy (2004). All fungal isolates were stored at the Plant Pathology Unit of Gembloux Agro-Bio Tech, University of Liege-Wallon, Belgium.

## Environmental factors

Water samples were collected from the waterhyacinth-infested sites where diseased plants were collected. Water mineral levels and pH were determined at each site along with temperature and RH. Water samples were analysed by the National Laboratory Water of Mali (LNE). Temperature and RH measurements were performed *in situ* with a thermohygrometer (Thermohygrometer HT5B, W-TECH, 38300 RUY-MONTCEAU, France).

## Pathogenicity tests

During experiments, the initial conidial inoculum was taken from petri dish cultures on PDA medium, preserved at 4 C for no more than 6 months and then subcultured at 25 C on different culture media before use. Healthy waterhyacinth plants were collected from natural infestations in the River Niger in Mali and maintained in a greenhouse at Gembloux Agro-Bio-Tech, University of Liege.

In a preliminary screen, the fungal pathogens were tested for their effects on 8 cm<sup>2</sup> leaf fragments cut from healthy, 15- to 20-day-old healthy waterhyacinth plants. Each fragment was placed on the surface of a petri plate containing agar supplemented with furfurylaminopurine-6 (1 mg mL<sup>-1</sup>). Spore suspensions (20 mL) were prepared from the fungal isolates (2 × 10<sup>6</sup> spores mL<sup>-1</sup> in 5% Tween® 20) and manually sprayed onto a set of nine leaf fragments. After inoculation, the petri plates were immediately sealed with Parafilm to prevent water loss and incubated at 25 C with a 16 h photoperiod for 4 weeks. After a preliminary screen to detect the most virulent isolates, the pathogenicity of selected isolates was evaluated by inoculating a set of healthy waterhyacinth

plants maintained in 15 L plastic pots under greenhouse conditions. The nine most virulent isolates were selected for a second screening on whole, 15- to 20-day-old healthy waterhyacinth plants. Fourteen-day-old cultures of the fungal isolates were used in the test. Three leaves of each plant were inoculated by spraying with a 20 mL spore suspensions (5 × 10<sup>6</sup> spores mL<sup>-1</sup> in 5% Tween® 20). Inoculated plants were covered with plastic for 72 h and then maintained in greenhouse where the environmental parameters are 85 ± 5% RH at 25 C with a 16 h photoperiod. The relative humidity of room was maintained by a humidifier (Humidifier DELONGHI UH800E, MANUTAN, 95506 GONESSE, France). The plants were rated for disease symptoms 6 weeks after incubation. The experiment was repeated three times.

Leaf fragments and plants were rated for disease symptoms including leaf spots, leaf lesions, and leaf death after 4 and 6 weeks incubation, respectively. The impact of the pathogens was determined by assessing the type of damage (disease severity, DS). DS was determined for each leaf on a scale of 0 to 9, where 0 = healthy and 9 = 100% diseased as described by Morsy 2004. Values for individual leaves were summed and averaged to derive DS for a whole plant. Finally, isolates were categorized into four groups according to diseased leaf area: Mild, <25%; Low Moderate, 26-50%; High Moderate, 51-75%; and Severe, >75%.

Data were subjected to one-way ANOVA performed with SAS software 9.1 (SAS Institute, Cary, NC, USA). When effects were significant, Duncan's multiple range tests was employed for mean separation.

## Host specificity tests

The host specificity of the selected fungi also was tested in a greenhouse. In addition to three ecotypes of waterhyacinth (Ecotypes from District of Bamako, Segou and Niono) and the invasive aquatic fern (*Salvinia molesta* Mitchell), the test included, several food crop plant species chosen for their economic and ecological importance as described by Martinez and Gutierrez (2001). Nonaquatic plants were grown in pots filled with aseptic commercialized soil free of any fungi. For aquatic plants, the soil contained in 8 L plastic pots was replaced by 15 L plastic pots with water. Each pot contained one plant. The experiment was replicated three times. The waterhyacinth ecotypes and the aquatic fern were inoculated by spraying, whereas the fungus was inoculated by watering with a suspension containing 5 × 10<sup>6</sup> spores mL<sup>-1</sup> to simulate irrigation conditions. The plants were monitored for disease symptoms every week for 4 weeks.

# RESULTS AND DISCUSSION

## Biodiversity

To our knowledge, this is the first extensive survey of pathogens infecting waterhyacinth in Mali. Our survey included all sections of the River Niger and all irrigation areas where waterhyacinth is reported as a serious problem. Waterhyacinth plants in the main irrigation canal were found to be infected by various fungi and displayed a wide variety of symptoms. The symptoms initially appeared as small necrotic

spots and developed into a leaf blight spreading over the leaf surface and the petiole. The infecting fungi (116 isolates of filamentous fungi of the phylum *Ascomycetes*) were identified as belonging to seven known genera (Table 1) on the basis of their morphological characteristics and the arrangement and structure of their conidia.

The genera *Curvularia* (60.32% of the isolates) and *Fusarium* (42.92%) were classified as very frequent; *Alternaria* (11.6%) and *Coniothyrium* (11.6%) as frequent; and *Phoma* (3.48%), *Stemphylium* (3.48%), and *Cadophora* (1.16%) as infrequent. We obtained 67 isolates from infected petioles and 49 from leaves. *Curvularia*, *Fusarium*, and *Stemphylium* appeared widely distributed over all infested areas of Mali, whereas *Alternaria* was found only in Bamako, and *Cadophora* and *Phoma* only in Niono.

Previous reports on the mycobiota of waterhyacinth indicate that the genera *Fusarium*, *Curvularia*, and *Alternaria* are frequently isolated from this weed (Evans and Reeder 2001, Praveena and Naseema 2004), and that *Alternaria* and *Fusarium* are particularly common (Babu et al. 2003, Morsy 2004, Praveena and Naseema 2004).

## Environmental factors

According to Laboratoire National des Eaux (2010), temperature, RH, pH, and mineral levels recorded for the areas infested with waterhyacinth were recorded in Table 2. Téllez et al. (2008) reported that the number of daughter plants of this weed is greatest at 25-40° C and an RH of 15-75%. According to Mandryk and Wein (2006), pH must be between 6 and 8, with the plant showing maximum growth at pH 7.

Temperature and pH ranges recorded at the infested sites in Mali (26-35 C and pH 6.72-7.79) are thus nearly optimal for the growth and vegetative reproduction of waterhyacinth. Factors associated with water pollution (e.g., wastewater from households, industries, and agriculture) most likely also contribute to high waterhyacinth infestations in Mali.

## Pathogenicity testing of fungal isolates

In the preliminary screen, all 116 fungal isolates were tested *in vitro* on leaf fragments of waterhyacinth plants. All fungal isolates were able to infect the plant and produce some disease symptoms (Table 3). Disease started as small necrotic spots and developed into a leaf blight that tended to spread over the leaf; however, only nine pathogens produced symptoms more than 50% of the total foliar area by the end of the 4-week incubation period: Mls214 (*Curvularia* sp.), Mln285 (*Curvularia* sp.), Mln286 (*Fusarium* sp.), Mlb603 (*Fusarium* sp.), Mlb633 (*Curvularia* sp.), Mlb682 (*Alternaria* sp.), Mlb684 (*Alternaria* sp.), Mln715 (*Cadophora* sp.), and Mln799 (*Fusarium* sp.).

Disease severity values were calculated over the 4-week period for all 116 isolates (Table 3). The DS values at the end of the experiment for the nine most damaging pathogens were 50, 51, and 50% for *Curvularia* sp. isolates Mls214, Mln285, and Mlb633, respectively; 52, 50, and 70% for *Fusarium* sp. isolates Mln286, Mlb603, and Mln799, respectively; 55 and 69% for 281 *Alternaria* sp. isolates Mlb682 and Mlb684, respectively; and 72% for *Cadophora* sp. isolate Mln715.

The second screening was carried out *in vivo* using the nine fungal isolates displaying the highest antagonistic activ-

TABLE 1. LIST OF FUNGAL GENERA ISOLATED FROM DISEASE HYACINTH PLANTS COLLECTED IN INFESTED AREAS IN MALI.

Fungi	Bamako		Localities Segou Part of plant		Niono		Total count	Frequency of occurrence
	Petiole	Leaf	Petiole	Leaf	Petiole	Leaf		
<i>Fusarium</i> sp.	11	13		1	6	6	37	42.92
<i>Curvularia</i> sp.	19	7	3	1	11	11	52	60.32
<i>Coniothyrium</i> sp.	5	2	1			2	10	11.60
<i>Alternaria</i> sp.	5	5					10	11.60
<i>Phoma</i> sp.					2	1	3	3.48
<i>Stemphylium</i> sp.	1				2		3	3.48
<i>Cadophora</i> sp.					1		1	1.16
Total	41	27	4	2	22	20	116	

TABLE 2. ENVIRONMENTAL PARAMETERS OF AREAS INFESTED BY WATERHYACINTH IN MALI.

Parameter	Site*				
	S1	S2	S3	S4	S5
Water pH	7.79	7.20	6.72	6.95	7.12
Air relative humidity (RH)	65	60	60	55	55
Air temperature	26	28	27	30.3	5
Na <sup>+</sup> mg L <sup>-1</sup>	305	175	105	98.1	50
Ammoniacal N mg l <sup>-1</sup>	18.50	35.20	10.40	5.32	41.90
NO <sub>3</sub> <sup>-</sup> mg L <sup>-1</sup>	12.80	10.20	13	8.70	11.30

\*S1: Reservoir lake of the hydroelectric dam of Sotuba (District of Bamako); S2: waste water canal of Badalabougou (District of Bamako); S3: canal of the Marietou Hotel (District of Bamako); S4: Sebougu Lake (Segou) in the central delta of River Niger; S5: wastewater canal in Niono.

TABLE 3. PATHOGENICITY OF FUNGI COLLECTED FROM WATERHYACINTH IN MALI (TESTS APPLIED TO DETACHED LEAVES OF WATERHYACINTH).

Isolate number	Genus	Waterhyacinth response DS
MIb436	<i>Fusarium</i> sp.	70
MIb78	<i>Fusarium</i> sp.	52
MIb455	<i>Fusarium</i> sp.	50
MIb776	<i>Fusarium</i> sp.	49
MIb11	<i>Fusarium</i> sp.	43
MIb22	<i>Fusarium</i> sp.	42
MIb324	<i>Fusarium</i> sp.	42
MIb498	<i>Fusarium</i> sp.	41
MIb310	<i>Fusarium</i> sp.	39
MIb799	<i>Fusarium</i> sp.	38
MIb286	<i>Fusarium</i> sp.	38
MIb603	<i>Fusarium</i> sp.	36
MIb745	<i>Fusarium</i> sp.	36
MIb959	<i>Fusarium</i> sp.	33
MIb127	<i>Fusarium</i> sp.	33
MIb411	<i>Fusarium</i> sp.	33
MIb115	<i>Fusarium</i> sp.	32
MIb697	<i>Fusarium</i> sp.	32
MIb167	<i>Fusarium</i> sp.	31
MIb114	<i>Fusarium</i> sp.	31
MIb340	<i>Fusarium</i> sp.	30
MIb906	<i>Fusarium</i> sp.	29
MIb523	<i>Fusarium</i> sp.	29
MIb326	<i>Fusarium</i> sp.	28
MIb977	<i>Fusarium</i> sp.	27
MIb700	<i>Fusarium</i> sp.	27
MIb885	<i>Fusarium</i> sp.	26
MIb130	<i>Fusarium</i> sp.	23
MIb236	<i>Fusarium</i> sp.	21
MIb335	<i>Fusarium</i> sp.	20
MIb139	<i>Fusarium</i> sp.	20
MIb200	<i>Fusarium</i> sp.	18
MIb639	<i>Fusarium</i> sp.	16
MIb355	<i>Fusarium</i> sp.	16
MIb890	<i>Fusarium</i> sp.	16
MIb101	<i>Fusarium</i> sp.	15
MIb277	<i>Fusarium</i> sp.	12
MIb285	<i>Curvularia</i> sp.	51
MIb214	<i>Curvularia</i> sp.	50
MIb633	<i>Curvularia</i> sp.	50
MIb332	<i>Curvularia</i> sp.	45
MIb109	<i>Curvularia</i> sp.	38
MIb179	<i>Curvularia</i> sp.	33
MIb180	<i>Curvularia</i> sp.	33
MIb55	<i>Curvularia</i> sp.	32
MIb178	<i>Curvularia</i> sp.	32
MIb501	<i>Curvularia</i> sp.	31
MIb344	<i>Curvularia</i> sp.	29
MIb279	<i>Curvularia</i> sp.	27
MIb960	<i>Curvularia</i> sp.	27
MIb963	<i>Curvularia</i> sp.	27
MIb500	<i>Curvularia</i> sp.	25
MIb205	<i>Curvularia</i> sp.	24
MIb304	<i>Curvularia</i> sp.	24
MIb215	<i>Curvularia</i> sp.	23
MIb301	<i>Curvularia</i> sp.	23
MIb917	<i>Curvularia</i> sp.	23

DS = Disease severity. Mild, <25% of diseased leaf area; Low Moderate, 26-50% of diseased leaf area; High Moderate, 51-75% of diseased leaf area; and Severe, >75% of diseased leaf area after 6-week test period.

TABLE 3. (CONTINUED) PATHOGENICITY OF FUNGI COLLECTED FROM WATERHYACINTH IN MALI (TESTS APPLIED TO DETACHED LEAVES OF WATERHYACINTH).

Isolate number	Genus	Waterhyacinth response DS
MIb40	<i>Curvularia</i> sp.	22
MIb170	<i>Curvularia</i> sp.	22
MIb825	<i>Curvularia</i> sp.	22
MIb171	<i>Curvularia</i> sp.	21
MIb830	<i>Curvularia</i> sp.	21
MIb835	<i>Curvularia</i> sp.	21
MIb898	<i>Curvularia</i> sp.	21
MIb970	<i>Curvularia</i> sp.	21
MIb709	<i>Curvularia</i> sp.	20
MIb838	<i>Curvularia</i> sp.	20
MIb893	<i>Curvularia</i> sp.	20
MIb896	<i>Curvularia</i> sp.	20
MIb926	<i>Curvularia</i> sp.	20
MIb892	<i>Curvularia</i> sp.	19
MIb913	<i>Curvularia</i> sp.	19
MIb52	<i>Curvularia</i> sp.	18
MIb887	<i>Curvularia</i> sp.	18
MIb70	<i>Curvularia</i> sp.	16
MIb762	<i>Curvularia</i> sp.	16
MIb141	<i>Curvularia</i> sp.	15
MIb152	<i>Curvularia</i> sp.	15
MIb10	<i>Curvularia</i> sp.	14
MIb66	<i>Curvularia</i> sp.	14
MIb69	<i>Curvularia</i> sp.	14
MIb241	<i>Curvularia</i> sp.	14
MIb322	<i>Curvularia</i> sp.	14
MIb24	<i>Curvularia</i> sp.	13
MIb432	<i>Curvularia</i> sp.	13
MIb281	<i>Curvularia</i> sp.	12
MIb35	<i>Curvularia</i> sp.	11
MIb526	<i>Coniothyrium</i> sp.	47
MIb757	<i>Coniothyrium</i> sp.	21
MIb360	<i>Coniothyrium</i> sp.	19
MIb749	<i>Coniothyrium</i> sp.	19
MIb210	<i>Coniothyrium</i> sp.	18
MIb440	<i>Coniothyrium</i> sp.	18
MIb486	<i>Coniothyrium</i> sp.	16
MIb187	<i>Coniothyrium</i> sp.	15
MIb627	<i>Coniothyrium</i> sp.	15
MIb349	<i>Coniothyrium</i> sp.	14
MIb338	<i>Coniothyrium</i> sp.	12
MIb39	<i>Coniothyrium</i> sp.	6
MIb684	<i>Alternaria</i> sp.	69
MIb682	<i>Alternaria</i> sp.	55
MIb632	<i>Alternaria</i> sp.	51
MIb568	<i>Alternaria</i> sp.	49
MIb513	<i>Alternaria</i> sp.	48
MIb129	<i>Alternaria</i> sp.	48
MIb406	<i>Alternaria</i> sp.	47
MIb305	<i>Alternaria</i> sp.	47
MIb517	<i>Alternaria</i> sp.	45
MIb104	<i>Alternaria</i> sp.	42
MIb930	<i>Phoma</i> sp.	48
MIb292	<i>Phoma</i> sp.	47
MIb808	<i>Phoma</i> sp.	36
MIb988	<i>Stemphylium</i> sp.	18

DS = Disease severity. Mild, <25% of diseased leaf area; Low Moderate, 26-50% of diseased leaf area; High Moderate, 51-75% of diseased leaf area; and Severe, >75% of diseased leaf area after 6-week test period.



TABLE 3. (CONTINUED) PATHOGENICITY OF FUNGI COLLECTED FROM WATERHYACINTH IN MALI (TESTS APPLIED TO DETACHED LEAVES OF WATERHYACINTH).

Isolate number	Genus	Waterhyacinth response DS
Mln992	<i>Stemphylium</i> sp.	18
Mlb641	<i>Stemphylium</i> sp.	17
Mln715	<i>Cadophora</i> sp.	72

DS = Disease severity. Mild, <25% of diseased leaf area; Low Moderate, 26-50% of diseased leaf area; High Moderate, 51-75% of diseased leaf area; and Severe, >75% of diseased leaf area after 6-week test period.

ity *in vitro*. Among them, only isolates Mln799 (*Fusarium* sp.), Mln715 (*Cadophora* sp.), and Mlb684 (*Alternaria* sp.) showed a DS of at least 70% after a 6-week incubation (Figure 2). According to Morsy (2004), disease incidence is considered High Moderate if DS = 51-75% and Severe if DS > 75% of leaf area covered by disease (Figure 3).

For isolates Mls214 (*Curvularia* sp.), Mlb602 (*Fusarium* sp.), and Mlb632 (*Fusarium* sp.), DS ranged from 40 to 47%, suggesting they are not strictly pathogenic and could be saprotrophs. Several strains of *Curvularia*, *Fusarium*, and *Alternaria* are reported to be biotrophic fungi, living within the host without seriously altering its physiology (Evans and Reeder 2001).

*Alternaria* and *Fusarium* are ubiquitous fungal genera and have been isolated from almost all habitats infested with waterhyacinth worldwide (Evans and Reeder 2001, Martinez and Lopez 2001). These genera include many species or strains that may be pathogenic toward several crops (Morsy et al. 2000, Babu et al. 2003). They also include some strains that seem specifically pathogenic toward waterhyacinth. Among them, *A. eichhorniae*, *A. alternata*, and *F. pallidoroseum* (Cooke) Sacc. have been reported as promising biological control agents against waterhyacinth in Egypt and India (Aneja and Singh 1989, Shabana 1997, Morsy 2004, Naseema et al. 2004).

This is the first report to mention the genus *Cadophora* on waterhyacinth. This genus, however, is recognized as pathogenic towards corn, rice, apple, and pear (Frisullo 2002). The present results highlight *Fusarium* sp. isolate Mln799, *Cadopho-*

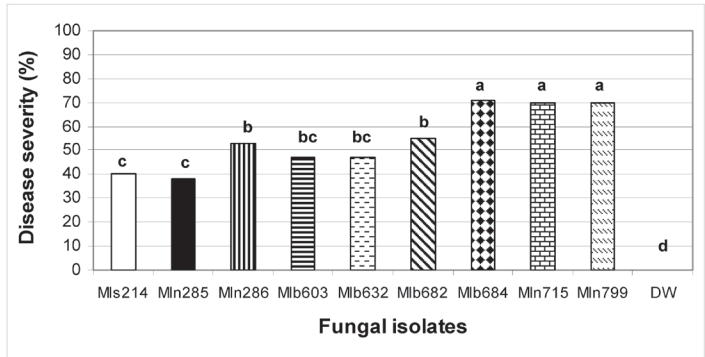
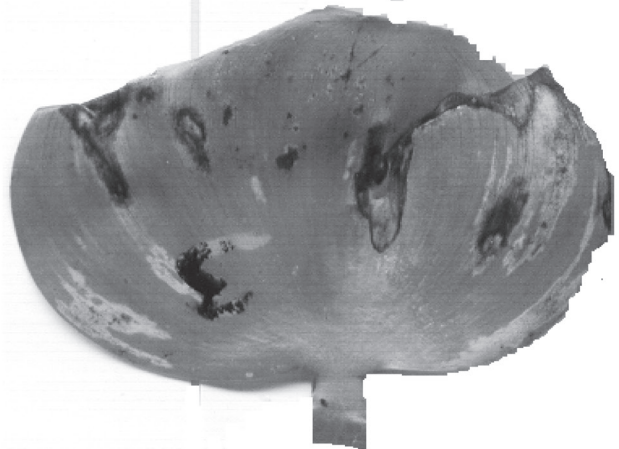
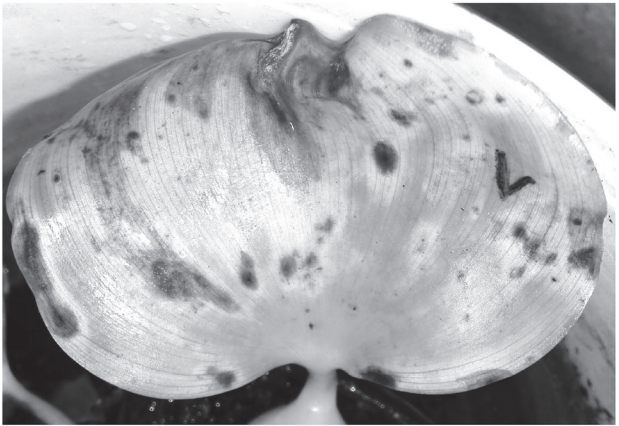


Figure 2. Disease severity (DS) recorded on waterhyacinth plants 42 days after incubation with nine fungal isolates (Mls214 = *Curvularia* sp., Mln285 = *Curvularia* sp., Mln286 = *Fusarium* sp., Mlb603 = *Fusarium* sp., Mlb632 = *Fusarium* sp., Mlb682 = *Fusarium* sp., Mlb684 = *Alternaria* sp., Mln715 = *Cadophora* sp., and Mln799 = *Fusarium* sp.). Duncan's multiple range tests was used to separate means at  $P < 0.05$ . Treatments having the same letters are not significantly different. DW: Sterilised water with no added pathogen

A



B



C



Figure 3. Leaf spots and blight symptoms on waterhyacinth plants after infection with (A) isolate Mln799 (*Fusarium* sp.); (B) isolate Mln715 (*Cadophora* sp.); and (C) isolate Mlb684 (*Alternaria* sp.).

ra sp. isolate Mln715, and *Alternaria* sp. isolate Mlb684 as potential bioherbicides for use in controlling waterhyacinth in Mali. These isolates were later identified as *Gibberella sacchari*

Summerell & J.F. Leslie, *Cadophora malorum* (Kidd & Beaumont) W. Grams, and *Alternaria* sp. respectively by Industrial Fungal & Yeast collection (BCCM/MUCL - Louvain-la-Neuve, Belgium). Because of its growth at 37° C (human body temperature), isolate Mln799 (*G. sacchari*) was eliminated from our collection and from further planned investigations.

Host range

Host range testing protocols using nontarget plants have been developed to assess the safety of pathogens as biological agents (Babu et al. 2002). Among the fungi recorded to date as pathogens of waterhyacinth, some of *Alternaria*, notably *A. eichhorniae* and *A. alternata*, have been proposed as possible promising biocontrol agents against this weed (Shabana 1997, Morsy 2004). Yet, Babu et al. (2003) report that carrots, sunflowers, and beans are susceptible to *A. eichhorniae*, and similar results have been reported for *A. alternata* (Morsy 2004). This led us to test the host ranges of *C. malorum* isolate Mln715 and *Alternaria* sp. isolate Mlb684.

When these strains were delivered via water supplied to 19 crop-plants and weeds belonging to 15 different families, results indicate that 4 weeks after application of either isolate, waterhyacinth (all three ecotypes) and *Salvinia* showed lesions on their leaves, whereas none of the food crop plants showed any symptoms of disease (Table 4).

Our inoculation method could affect this outcome: in field use the mycoherbicide will be directly sprayed on the waterhyacinth and *Salvinia*. Based on our results, these fungal isolates would not be expected to affect economically important plants in Mali and should thus be viewed as potential candidates for managing waterhyacinth infestations.

TABLE 4. HOST SPECIFICITY OF ISOLATES Mlb684 (*ALTERNARIA* SP.) AND Mln715 (*CADOPHORA MALORUM*) (+ = SYMPTOMS WERE OBSERVED).

Plant family	Common name	Rating for	
		Mlb684	Mln715
Rosaceae	Pear	–	–
	Apple	–	–
Poaceae	Rice	–	–
	Sorghum	–	–
Amaranthaceae	Corn	–	–
	Beet	–	–
Apiaceae	Amaranth	–	–
	Carrot	–	–
Caricaceae	Papaya	–	–
Liliaceae	Onion	–	–
Brassicaceae	Turnip	–	–
Fabaceae	Bean	–	–
Asteraceae	Sunflower	–	–
Malvaceae	Sorrel of Guinea	–	–
Piperaceae	Pepper	–	–
Apiaceae	Celery	–	–
Solanaceae	Tomato	–	–
Pontederiaceae	Waterhyacinth	–	–
	Ecotype 1	+	+
	Ecotype 2	+	+
Salviniaceae	Ecotype 3	+	+
	Aquatic fern	+	+

ACKNOWLEDGEMENTS

This paper is part of a PhD dissertation submitted to Gembloux Agro Bio Tech, University of Liège. The authors are grateful to the Plant Pathology Unit, Gembloux Agro-Bio Tech for facilitating lab work and to Belgian Technical Cooperation (BTC) for financial support.

LITERATURE CITED

Adebayo RA, Uyi UO. 2010. Biological control of invasive weed species: Nigerian experience. Int. J. Agric. Res. ISSN 1816-4897.

Ainsworth GC, Sparrow FK, Sussman AS. 1973. The Fungi, an Advanced Treatise. Vol. IV A: A Taxonomic Review with Keys: Ascomycetes and Fungi Imperfecti. 621 S., 39 Abb., 78 Tafeln. New York-London. Academic Press Inc.

Aneja KR, Singh K. 1989. *Alternaria alternata* (Fr.) Keissler a pathogen of waterhyacinth with biocontrol potential. Trop. Pest Manage. 35:354-356.

Babu RM, Sajeena A, Seetharaman K, Vidhyasekaran P, Rangasamy P, Prakash MS, Raja AS, Biji KR. 2002. Host range of *Alternaria alternata*, a potential fungal biocontrol agents for water hyacinth in India. Crop Prot. 21:1083-1085.

Babu MR, Sajeena A, Seetharaman K. 2003. Bioassay of the potentiality of *Alternaria alternata* (Fr.) keissler as a bioherbicide to control water hyacinth and other aquatic weeds. Crop Prot. 22:1005-1013.

Boyette CD, Hoagland RE, Weaver MA. 2007. Biocontrol efficacy of *Colletotrichum truncatum* for hemp sesbania (*Sesbania exaltata*) is enhanced with unrefined corn oil and surfactant. Weed Biol. Manage. 7:70-76.

Charudattan R. 2001. Biological control of weeds by means of plant pathogens: significance for integrated weed management in modern agro-ecology. Biocontrol. 46:229-260.

Charudattan R. 2005. Ecological, practical and political inputs into selection of weed targets: what makes a good biological control target? Biol Control. 35:183-196.

Dagno K, Lahlali R, Friel D, Bajji M, Jijakli MH. 2007. Synthèse bibliographique: problématique de la Jacinthe d'eau, *Eichhornia crassipes* dans les régions tropicales et subtropicales du monde, notamment son éradication par la lutte biologique au moyen des phytopathogènes. Biotechnol. Agron. Soc. Environ. 11 (4):299-311.

Dembélé, B. 1994. La jacinthe d'eau, un fléau pour les cours d'eau au Mali? Mali. Sahel PV info, CILSS. N° 63.

Dembélé B, Diarra A. 1997. Projet d'appui à la lutte contre la jacinthe d'eau et autres plantes aquatiques au Mali. Mali. Sahel IPM, CILSS. N° 13.

Evans HC, Reeder RH. 2001. Fungi Associated with *Eichhornia crassipes* (Water hyacinth) in the upper Amazon basin and prospects for their use in Biological Control, CABI Bioscience, Silwood Park, Ascot, Berks. SL5 7TA, UK.

Frisullo S. 2002. First report of *Cadophora malorum* on *Asparagus officinalis* in Italy. Phytopathol. Mediterr. 41:148-151.

Lacap DC, Liew ECY, Hyde KD. 2003. An evaluation of the fungal 'morphotype' concept based on ribosomal DNA sequences. Fungal Divers. 12:53-66.

Laboratoire National des Eaux. 2010. Certificat d'analyse d'eau. Ministère de l'Energie et de l'Eau. Bamako - Mali. N° 83B, 84B, 85B, 86B.

Lata N, Dubey V. 2010. *Eichhornia crassipes* a suitable economic feed: the world's worst aquatic weed. J Food Technol. 8(3):102-105.

Mandryk AM, Wein RW. 2006. Exotic vascular plant invasiveness and forest invisibility in urban boreal forest types. Biol. Invasions. 8:1651-1662.

Martínez JM, Charudattan R. 1998. Survey and evaluation of Mexican native fungi for potential biocontrol of water hyacinth. J. Aquat. Plant Manage. 36:145-148.

Martínez JM, Gutierrez LE. 2001. Host range of *Cercospora piaropi* and *Acremonium zonatum*, potential fungal biocontrol agents for water hyacinth in Mexico. Phytoparasitica. 29:175-177.

Morsy EM. 2004. Evaluation of microfungi for the biological control of water hyacinth in Egypt. Fungal Divers. 16:35-51.

Morsy EM, Serag MS, Zahran JAT, Rashed IG. 2000. The occurrence of microfungi in the ectorrhizosphere-rhizoplane zone of some selected macrophytes from the Nile Delta of Egypt. Bulletin of the Faculty of Science, Assiut University 2 (2-D): 15-26.

Naseema A, Praveena R, Rejinair R, Peethambaran CK. 2004. *Fusarium pallidoroseum* for management of water hyacinth. Curr. Sci. 86:6-25.

Praveena R, Naseema A. 2004. Fungi occurring on water hyacinth (*Eichhornia crassipes* (Mart.) Solms) in Kerala. *J. Trop. Agric.* 42(1-2):21-23.

Shabana YM. 1997. Formulation of *Alternaria eichhorniae*, a mycoherbicide for water hyacinth, in invert emulsions averts dew dependence. *J. Plant Dis. Protect.* 104(3):231-238.

Shabana YM. 2005. The use of oil emulsions for improvising the efficacy of *Alternaria eichhorniae* as a mycoherbicide for waterhyacinth (*Eichhornia crassipes*). *Biol. Control.* 32(1):78-89.

Téllez TR, de Rodrigo López EM, Granado GL, Pérez EA, López RM, Sánchez Guzmán JMS. 2008. The Water Hyacinth, *Eichhornia crassipes*: an invasive plant in the Guadiana River Basin (Spain). *Aquat. Invasions.* 3(1):42-53.

Vincent AC. 2001. Evaluation of two plant pathogens, *Cercospora piaropi* and *Myrothecium roridum* as potential bioherbicides to control water hyacinth, *Eichhornia crassipes*. Master's thesis, University of Florida, USA.

*J. Aquat. Plant Manage.* 50: 32-38

# Influence of biological control damage on efficacy of penoxsulam and two other aquatic herbicides on waterhyacinth

PATRICK J. MORAN\*

## ABSTRACT

Populations of waterhyacinth (*Eichhornia crassipes* [Mart.] Solms.) in the southeastern United States have been reduced through separate biological and chemical control efforts. However, damaging populations are still widespread, and integrated approaches are needed. In this study, the effect of combined application of penoxsulam (2-(2,2-difluoroethoxy)-6-(trifluoromethyl)-N-(5,8-dimethoxy[1,2,4]triazolo-[1,5c]pyrimidin-2-yl)-benzenesulfonamide) and biological control (BC) agents (*Neochetina* spp. waterhyacinth weevils and a conidial suspension of the fungus *Cercospora piaropi* Tharp) on mortality and colony growth was examined in outdoor tanks. BC alone caused damage but did not kill shoots. Combined BC and penoxsulam application reduced time to death by 1 to 2 weeks compared to penoxsulam alone in subsurface applications at 5 to 10 µg ai L<sup>-1</sup> or in foliar applications at 0.035 kg ai ha<sup>-1</sup>. At 10 µg ai L<sup>-1</sup>, this combination also caused a net decline in shoot density. Penoxsulam and BC killed plants 3 weeks earlier than did triclopyr (3,5,6-trichloro-2-pyrinyloxyacetic acid, triethylamine salt; 0.42 kg ae ha<sup>-1</sup>) and BC, or glyphosate (N-[phosphonomethyl]glycine, isopropylamine salt; 0.56 kg ae ha<sup>-1</sup>) and BC in a winter test. Triclopyr with or without BC killed plants 3 weeks earlier than the other two herbicides in a summer test. The efficacy of penoxsulam was positively influenced by biological control damage, indicating that damage surveys prior to application may permit dose reduction to achieve efficacy.

**Key Words:** *Eichhornia crassipes*, fungus, glyphosate, integrated control, *Neochetina*, triclopyr.

## INTRODUCTION

Chemical control of aquatic weeds can provide benefits for water users and wildlife by protecting and conserving water resources, but applications must be managed to minimize risks and costs (Richardson 2008, Netherland 2009). Aquatic weeds have also been targeted with biological control (BC), a strategy considered successful against waterhyacinth (*Eichhornia crassipes* [Mart.] Solms., Pontederiaceae; Julien 2001). Pantropical releases of two leaf- and shoot crown-feeding weevils (*Neochetina* spp.) (Coleoptera: Curculionidae) and other agents have decreased waterhyacinth density (Julien 2001, Center et al. 2002), increased availability of water (Martínez Jiménez and Gómez Balandra 2007) for human use and native plants, and saved human livelihoods dependent on water navigation and fishing in Africa and southeast Asia (Van Driesche et al. 2010). BC of waterhyacinth in the United States has primarily involved two introduced leaf-feeding weevils (*Neochetina bruchi* Hustache and *Neochetina eichhorniae* Warner; Coleoptera: Curculionidae; Center et al. 2002). Additive interactions can occur between *Neochetina* spp. and two fungal pathogens that are native or adventive in the United States (*Cercospora piaropi* Tharp and *Acremonium zonatum* [Saw.] Gams; Charudattan 1986, 2001, Moran 2005, Martínez Jiménez and Gómez Balandra 2007). Pathogens such as these can be applied to plants (Auld et al. 2003, Hallett 2005) or may interact with the weevils in natural infections. However, climate (Julien 2001), plant nutrient availability (Room et al. 1989, Wheeler and Center 1996, Center and Dray 2010), and low host plant density (Wilson et al. 2006) can all limit establishment, dispersal, and efficacy of BC agents of waterhyacinth and other aquatic weeds, as can the use of other control methods which limit host plant availability to agents (Center et al. 1999, Moran 2004, Schooler et al. 2007).

Recent research (Hill and Coetzee 2008, Richardson 2008, Santos et al. 2009) and regulatory debates (EPA 2010) have highlighted the importance of integrated management for

\*Exotic and Invasive Weeds Research Unit, 800 Buchanan St., Albany, CA 94710. Email: Patrick.Moran@ars.usda.gov. Received for publication April 16, 2011 and in revised form October 19, 2011. Mention of trade names or commercial products in this article is solely for the purpose of providing information and does not imply recommendation or endorsement by the U.S. Department of Agriculture.



aquatic weeds. In general, little information is available on combined arthropod-herbicide strategies for aquatic weed control (Ainsworth 2003). However, increased damage and reduction in plant biomass and/or survival has been demonstrated in waterhyacinth (Charudattan 1986), Eurasian water-milfoil (*Myriophyllum spicatum* L; Nelson and Shearer 2008) and hydrilla (*Hydrilla verticillata* [L. f.] Royle; Nelson and Shearer 2009) using reduced doses of herbicides combined with BC agents (insects and/or plant pathogens) compared to insects alone. On waterhyacinth, insect populations may benefit from lush regrowth following lethal herbicide application (Center et al. 1999, Center and Dray 2010). Sublethal application may improve plant quality for herbivores (Wright and Bourne 1990, Haag and Habeck 1991) and/or slow plant growth, allowing more time for insects to develop (Jidhav et al. 2008). Toxicity through direct contact can occur; several products applied to *Neochetina* spp. cause 10 to 15% mortality (Patnaik et al. 1987), possibly due to lipophilic adjuvants (Haag 1986). However, BC agents are usually not indirectly affected by feeding on live, herbicide-weakened terrestrial weeds (Tipping 1991, Lindgren et al. 1999, Boydston 2004, Williams et al. 2004), and direct toxicity is minimal or absent (Lindgren et al. 1998, Rees and Fay 1989). Insect damage can enhance herbicide efficacy against terrestrial weeds (Lym and Nelson 2002, Boydston 2004, Williams et al. 2004, Metzger et al. 2008), but little is known about the influence of sublethal BC damage on aquatic herbicide efficacy.

Chemical control of waterhyacinth is still often necessary in the southeastern United States and California (Center et al. 2002, Spencer and Ksander 2004). Many chemical tools are available (Gettys 2009, Netherland 2009), but selection of an herbicide and dose is restricted by label regulations, costs, and requirements imposed by water users. Damage caused by BC could reduce the effective dose of herbicide needed. The objective of this study was to determine the impact of damage by *Neochetina* spp. weevils and a fungal pathogen (*Cercospora piaropi*) on the efficacy of penoxsulam applied to waterhyacinth at rates at or below label recommendations, in comparison with the combined efficacy of triclopyr or glyphosate and BC damage.

## MATERIALS AND METHODS

### Plant, insect and fungal culturing and application

Waterhyacinth was collected from a field population near Monte Alto, Hidalgo County, Texas (26°24.796N, 97°57.549W) and cultured for 2 months in a 1000 L cattle tank (0.8 m water depth). Colonies for experiments were established with shoots (taken from the 1000 L tank) in 400 L plastic tanks (5 to 10 shoots per tank, tank area = 0.94 m<sup>2</sup>, 0.6 m depth), caged with 1.0 mm mesh screening supported by PVC pipe to a height of 0.5 m above the top of the tank. Culturing and experimental tanks were filled with treated municipal water supplemented with 70 mg L<sup>-1</sup> ammonium, 12 mg L<sup>-1</sup> nitrate, 34 mg L<sup>-1</sup> phosphate, 83 mg L<sup>-1</sup> potassium, and 1 to 3 mg L<sup>-1</sup> micronutrients. Blue dye<sup>2</sup> (0.01% v/v) was added once at tank initiation time to inhibit algal growth. The water was aerated continuously with aquarium pumps and refertili-

zed with nitrogen once per month. For experiments, plants were allowed 1 week to acclimate in the 400 L tanks.

The two *Neochetina* waterhyacinth weevil species (~70% *Neochetina bruchi* Hustache, 30% *Neochetina eichhorniae* Warner) were collected from multiple local field sites 1 day before each experiment, or were isolated from plants in a 1000 L tank maintained as above inside a 3.0 by 3.7 by 2.6 m cage made of 13-mesh cm<sup>-1</sup> saran plastic screening. For applications, 25 weevils were surface-sterilized with 0.9% benzalkonium chloride, rinsed in sterile water, and immediately released into each tank involving BC treatment. Weevils were not sexed, but were collected from mature, healthy plants and were thus expected to show a near-1:1 sex ratio (Center and Dray 1992).

The fungus *Cercospora piaropi* Tharp was isolated from infected leaves collected from local field infestations and cultured on solid potato dextrose agar (PDA; 19.5 g L<sup>-1</sup>) with 5 g L<sup>-1</sup> yeast extract. Two week-old cultures were used for inoculations. Spores were suspended in a formulation containing 0.05% w/v Kelgin® LV humectant<sup>3</sup>, 0.003% v/v IVOD® citrus oil<sup>4</sup>, and 0.2% v/v Tween® 80 surfactant<sup>5</sup>, and the concentration was adjusted to 1 × 10<sup>6</sup> spores mL<sup>-1</sup>.

The objective of the study was to examine the impact of BC by the two weevils and *C. piaropi* in combined infestations and infections, as occur in the field. Tanks were infested with weevils (25 per tank) and sprayed with *C. piaropi* (5 mL suspension per tank) 1 day prior to herbicide applications. The effectiveness of the BC treatment to cause damage was examined using data from the July 2009 test of effects of BC on efficacy of three herbicides (see 'Interactions of herbicide and biological control', below). The number of scars made by waterhyacinth weevils on the youngest unfurled leaf lamina were counted 1 and 2 weeks after treatment (WAT), as was percent coverage of the lamina of the oldest live leaf with necrotic spotting indicative of *C. piaropi* infection. Data were ranked (ties = mean) and analyzed with Kruskal-Wallis analyses of variance (SAS PROC GLIMMIX; SAS Institute 2004) and Tukey least-square mean separation.

### Herbicides and application methods

Three herbicides were evaluated in this study. Penoxsulam<sup>6</sup> is recommended for control of floating aquatic weeds at doses ranging from 25 to 75 µg ai L<sup>-1</sup> for water subsurface application (done with a pipette in this study), or at rates of 0.024 to 0.096 kg ai ha<sup>-1</sup> for foliar applications (SePRO 2009a). Triclopyr<sup>7</sup> is recommended for foliar application to waterhyacinth (SePRO 2009b) at rates of 1.8 to 6.8 kg ae ha<sup>-1</sup>, and the isopropylamine salt of glyphosate<sup>8</sup> is recommended for foliar application (Nufarm 2008) at rates of 3.8 to 4.6 kg ae ha<sup>-1</sup>. All foliar applications included 0.25% v/v methylated seed oil surfactant<sup>9</sup> and were made using a hand-held household pressurized sprayer<sup>10</sup> at a spray volume of 230 L ha<sup>-1</sup>. Herbicides were applied between 9 and 10 AM in full sun. Daily temperature averaged 29.6 ± 0.7 C during the 2008-2009 summer experiments and 17.2 ± 1.2 C in one test run under winter conditions (Dec 2008). To determine a sublethal subsurface dose of penoxsulam, this compound was applied to the water in a preliminary 42-day experiment without BC in May 2008 at concentrations of 0 to 50 µg ai L<sup>-1</sup> (3 replicates per concentration, replicate = 1 tank).

## Interactions of herbicide and biological control

Four experiments examined the effect of BC on penoxsulam efficacy. In the first experiment, beginning in July 2008 and lasting 42 days, penoxsulam was applied to the water to achieve a dose of 5 or 10  $\mu\text{g ai L}^{-1}$ , with or without addition of *Neochetina* spp. weevils and *C. piaropi* (4 reps), while four tanks were left untreated (no control method). In an experiment started in August 2008 and lasting 56 days, penoxsulam was applied as a foliar spray at a rate of .0175 or 0.035 kg ai ha<sup>-1</sup> (4 reps) with and without BC, while four tanks were left untreated.

In two additional foliar spray experiments (started in December 2008, winter 2008 test, and July 2009, summer 2009 test), penoxsulam (0.035 kg ai ha<sup>-1</sup>), triclopyr (0.42 kg ae ha<sup>-1</sup>), or glyphosate (0.56 kg ae ha<sup>-1</sup> isopropylamine salt) was applied. The winter 2008 test involved four treatments (penoxsulam + BC, triclopyr + BC, and glyphosate + BC), and BC alone, 4 replicate tanks per treatment), and lasted 75 days. The inclusion of other controls (e.g., herbicides alone, and no treatment) was limited in this winter test by plant and weevil availability. The summer 2009 test involved eight treatments (3 reps per treatment): an untreated control, BC alone, penoxsulam, triclopyr, and glyphosate alone, and each herbicide + BC. This experiment lasted 70 days.

## Data collection

Six to eight plants per tank were tagged on the youngest unfurled leaf, and tags were moved as needed to avoid loss from dying leaves. The living or dead status of tagged plants was checked at least weekly. A plant was scored as dead if all leaf blades and petioles were brown to black and flaccid and no buds or regrowth were present on the central shoot crown. In some cases the tagged plant could not be found, presumably due to sinkage, and was scored as dead. Total shoots per tank was determined weekly. Untreated and BC-only colonies became overcrowded, and excess shoots were removed every 2 weeks (to achieve a density of approximately 70 shoots per tank). Removed shoots were dried in an un-cooled greenhouse (temperatures reaching 50 C. At the end of each experiment, all living and dead shoots were removed, combined with previously removed shoots, if any, and oven-dried at 70 C for 72 h for determination of total dry biomass (DW).

## Data analysis

In all four tests (two with penoxsulam alone, two involving all three herbicides), the median number of days after treatment (DAT; day 0 = day of biological control agent application) at which death of tagged plants occurred was determined for each tank, and these medians were used in a survival analysis with PROC LIFETEST in SAS (SAS Institute 2004) and Kaplan-Meier product-limit estimates to determine a survival probability curve for each treatment. These curves were then compared with a Wilcoxon  $\chi^2$  test. For simplicity, survival is presented here as median days to plant death for each treatment. For the winter 2008 and summer 2009 tests involving multiple herbicides, efficacy was also compared using Kruskal-Wallis analyses of variance on ranked percentages

of tagged plants that were dead 6 WAT in each tank. For all experiments, the change in shoot density over the timeframe of each trial and final DW were compared among treatments using ANOVAs. Normality and homogeneity of variance assumptions were verified with Wilk's lambda in SAS PROC UNIVARIATE and Levene's test in SAS PROC GLM, respectively.

For the summer 2009 test involving BC alone, each of the three herbicides alone, penoxsulam + BC, triclopyr + BC and glyphosate + BC, final DW and final shoot density was converted to percent control for each replicate tank using the average value for these two variables across the three no-treatment tanks. The expected additive effect of BC and herbicide control combined was then calculated for each of the three combined treatments as in Colby (1967), using average percent control values for BC or herbicide alone. Differences in observed versus expected control were examined with sign tests to determine significance of positive values (indicative of synergism) or negative values (indicative of antagonism) from zero (lack of significance is indicative of additive or non-interactive effects).

## RESULTS AND DISCUSSION

### Damage caused by biological control

*Neochetina* spp. weevils and *C. piaropi* fungus applied to the plants caused damage within 1 week in all tests, either with or without herbicide application. In representative data from the summer 2009 test, youngest unfurled leaves had  $7.7 \pm 1.4$  scars caused by waterhyacinth weevils 1 WAT (mean  $\pm$  SE across all four treatments involving BC), and 40% necrosis (22 to 58%, 95% lower-upper confidence intervals across all four treatments involving BC) on oldest unfurled leaves caused by infection by *C. piaropi* (Figure 1). Comparisons of ranked data showed differences in damage between weevil- and fungal-exposed plants and non-BC tanks (for scarring,  $F_{7,16} = 22.4$ ,  $P < 0.001$ ; for necrosis,  $F_{7,16} = 17.3$ ,  $P < 0.001$ ; Figure 1), but none among the four treatments involving BC (BC alone, penoxsulam + BC, triclopyr + BC, and glyphosate + BC), indicating that herbicide application did not negatively affect the ability of the BC agents to cause damage. By 2 WAT, a new youngest unfurled leaf had emerged, and the prior oldest live leaf had died. New youngest unfurled leaves observed 2 WAT had significantly more damage ( $17.4 \pm 3.0$  scars per leaf, averaged across all four treatments involving BC) than did plants in treatments lacking BC ( $0.14 \pm 0.10$ ;  $F_{1,21} = 82.6$ ,  $P < 0.001$ ), while live oldest leaves in tanks subjected to any of the four treatments involving BC had almost no fungal necrosis (4%, 1 to 7% confidence interval), indicative of transient effects of fungal inoculation.

### Penoxsulam efficacy and biological control

Application of penoxsulam between 10 and 50  $\mu\text{g ai L}^{-1}$  with no BC in a preliminary 42-day test led to plant death after a median of 37 days at 10  $\mu\text{g ai L}^{-1}$ , 29 days at 20 and 25  $\mu\text{g ai L}^{-1}$ , and 20 days at 50  $\mu\text{g ai L}^{-1}$  (data not shown). Survival analysis showed a significant difference in survival probability among these doses (Wilcoxon Chi-square,  $\chi^2 = 21.6$ ,  $P =$



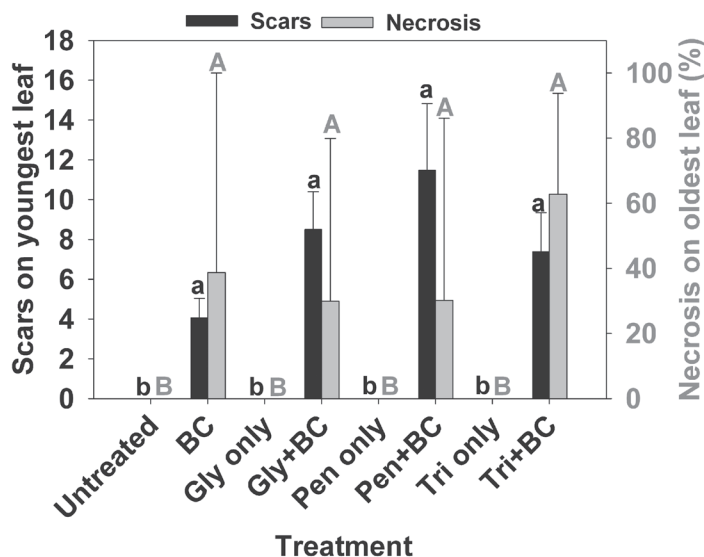


Figure 1. Scars (mean ± SE) made by *Neochetina* spp. weevils on youngest unfurled leaves (left axis) and percent necrosis (mean + upper 95% confidence interval) on oldest live leaves (right axis) caused by the fungus *C. piaropi* one week after application of biocontrol agents and/or herbicides onto plants in 1 m<sup>2</sup> tanks (n = 3). Bars with the same lowercase (scars) or uppercase (necrosis) letter are not significantly different in Tukey mean comparisons of ranked data ( $\alpha = 0.05$ ). Abbreviations: BC = biological control, application of 25 weevils and  $5 \times 10^6$  *C. piaropi* fungal spores per tank; Gly = glyphosate, 0.56 kg ae ha<sup>-1</sup> isopropylamine salt; Pen = penoxsulam, 0.035 kg ai ha<sup>-1</sup>; Tri = triclopyr, 0.42 kg ae ha<sup>-1</sup> triethylamine salt.

0.002). The results are consistent with the high below-label (to 2 µg ai L<sup>-1</sup>) efficacy demonstrated by penoxsulam against waterhyacinth in previous studies (Richardson and Gardner 2007).

After subsurface application of penoxsulam in July 2008, survival probability functions varied among treatments ( $\chi^2 = 26.5$ ,  $P < 0.001$ ). Controls (no BC or herbicide) and plants treated with 5 µg ai L<sup>-1</sup> penoxsulam without BC survived the duration of the test (42 days). Median days to plant death were similar for plants at 5 µg ai L<sup>-1</sup> + BC and 10 µg ai L<sup>-1</sup> without BC (29 days), while plants exposed to 10 µg ai L<sup>-1</sup> penoxsulam + BC died 2 weeks earlier (after 15 days) than did plants exposed to penoxsulam at this same dose without BC (Figure 2). Despite the death of many marked shoots, net live shoot density per tank increased due to production of daughter plants, except in tanks treated with 10 µg ai L<sup>-1</sup> + BC ( $F_{4,15} = 121$ ,  $P < 0.001$ ; Figure 2). Final DW (combined dead and live material) was reduced 50 to 56% by penoxsulam at 5 µg ai L<sup>-1</sup>, but this reduction occurred in tanks treated with either penoxsulam alone ( $166 \pm 21$  g) or penoxsulam + BC ( $200 \pm 42$  g) in comparison to control tanks ( $385 \pm 30$  g;  $F_{2,9} = 13.3$ ,  $P = 0.002$ ) (data not shown).

Foliar application of 0.0175 or 0.035 kg ai ha<sup>-1</sup> penoxsulam in the test started in August 2008 led to plant death less than 6 WAT with or without BC, but survival varied by treatment ( $\chi^2 = 23.1$ ,  $P < 0.001$ ). At 0.035 kg ai ha<sup>-1</sup>, penoxsulam + BC treatment decreased time to death compared to penoxsulam alone by almost 2 weeks (17 vs. 30 days; Figure 3). Penoxsulam reduced new shoot gain ( $F_{4,15} = 12.1$ ,  $P < 0.001$ ), but changes in shoot density did not differ between tanks treated with

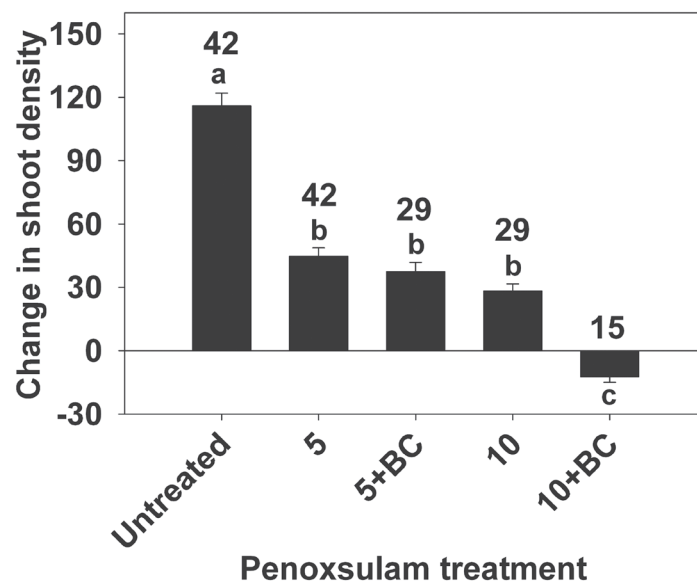


Figure 2. Change (mean ± SE) in waterhyacinth shoot density (m<sup>2</sup>) in a 42-day test in 1 m<sup>2</sup> tanks treated with subsurface penoxsulam at 5 or 10 µg ai L<sup>-1</sup> with or without application of biological control (+BC; 25 waterhyacinth weevils and  $5 \times 10^6$  *C. piaropi* fungal spores per tank; n = 4). Bars with the same lowercase letter are not significantly different in Tukey mean comparisons of ranked data ( $\alpha = 0.05$ ). Numbers above bars give median days to death of marked plants.

penoxsulam + BC and herbicide alone (Figure 3). Final tank DW did not vary significantly among treatments ( $F_{4,15} = 2.8$ ,  $P = 0.06$ ; data not shown), although 35 g ai ha<sup>-1</sup> penoxsulam +

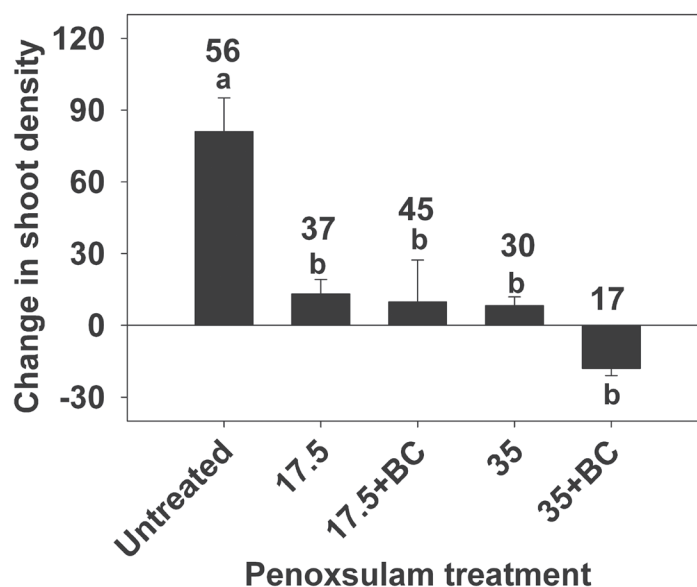


Figure 3. Change (mean ± SE) in shoot density (m<sup>2</sup>) in a 56-day test in 1 m<sup>2</sup> tanks treated with foliar penoxsulam at rates of 0.0175 or 0.035 kg ai ha<sup>-1</sup> with or without application of biological control (+BC; 25 waterhyacinth weevils and  $5 \times 10^6$  *C. piaropi* fungal spores per tank; n = 4). Bars with the same lowercase letter are not significantly different in Tukey mean comparisons of ranked data ( $\alpha = 0.05$ ). Numbers above bars give median days to death of marked plants.

BC caused an 87% reduction in DW ( $35.0 \pm 4.1$  g) compared to the control tanks ( $267.4 \pm 32.2$  g), whereas penoxsulam alone at this dose reduced DW by 52% ( $127.7 \pm 34.4$ ).

### Comparative efficacy of three herbicides and biological control

In the winter (December) 2008 comparison of the efficacy of sublethal doses of three herbicides in the presence of BC, survival varied among treatments ( $\chi^2 = 14.9$ ,  $P = 0.002$ ). Plants treated with penoxsulam + BC died at least 19 days earlier than plants treated with triclopyr + BC or glyphosate + BC (Table 1). In comparisons of ranked percent mortality 6 WAT, penoxsulam + BC (88%), and triclopyr + BC (28%) differed from glyphosate + BC (3%) and BC alone (0%;  $F_{3,12} = 24.0$ ,  $P < 0.001$ ). Increases in shoot density were lower in colonies treated with penoxsulam + BC and triclopyr + BC than in BC-only tanks ( $F_{3,12} = 17.8$ ,  $P < 0.001$ ), and combined penoxsulam + BC caused a net decline in shoot density (Table 1). Final DW did not vary among treatments ( $F_{3,12} = 2.9$ ,  $P = 0.08$ ; Table 1), probably because of the inclusion of dead biomass in the dried samples.

The comparative efficacy of the three herbicides differed in the summer (July) 2009 test from the winter 2008 test. Survival of marked plants varied significantly ( $\chi^2 = 14.9$ ,  $P = 0.002$ ), but triclopyr, rather than penoxsulam had the shortest median kill time, 21 DAT in tanks subjected to triclopyr + BC or triclopyr alone (Table 2). Only triclopyr without BC differed in percent mortality of marked shoots 6 WAT (95%) from untreated colonies (0%;  $F_{7,16} = 3.0$ ,  $P = 0.035$ ; triclopyr and BC: 67% mortality). Consistent with the August 2008 test, foliar penoxsulam + BC treatment killed marked plants in the summer 2009 2 weeks faster than did penoxsulam alone (Table 2). Median time to death was actually 1 week longer in tanks subjected to glyphosate + BC relative to glyphosate alone, but percent mortality 6 WAT was similar (39 and 44%, respectively). In a tank study in South Africa (Jadhav et al. 2008), a 2-fold more concentrated dose of glyphosate (isopropylamine salt,  $1.1$  kg ae ha<sup>-1</sup>) stopped plant growth but did not kill plants;  $2.2$  kg ae ha<sup>-1</sup> was required for mortality. In the summer 2009 test, colonies treated with any of the three herbicides, either alone or + BC, gained no more than 18% of the shoots gained by colonies subjected to BC alone or no treatment ( $F_{7,16} = 17.6$ ,  $P < 0.001$ ; Table 2), as herbicides outperformed BC alone, but there were no differences among herbicides, and no enhancement by BC of the negative effect of herbicides alone on shoot gain. Final DW was reduced by herbicides compared to untreated control colonies ( $F_{7,16} = 7.6$ ,  $P < 0.001$ ), but the combination of BC and herbicide

never reduced biomass more than herbicide alone (Table 2). Shoot gain and final biomass were virtually identical in the winter 2008 and summer 2009 tests in colonies subjected to BC only (Tables 1 and 2).

Final shoot density and final DW from the summer 2009 test were converted to percentages of control values and used to determine expected additive control effects of herbicides and BC (Colby 1967). Differences in observed minus expected values for each herbicide with BC did not differ from zero in signed rank tests ( $P \geq 0.25$ ), indicating that biological and chemical control effects were additive or noninteractive.

### Conclusions for integrated control

BC did not have additive effects on the efficacy of triclopyr or glyphosate, but waterhyacinth shoot death was achieved 2 weeks more rapidly after penoxsulam application in the presence of *Neochetina* spp. weevil and *C. piaropi* fungal lesion damage than in the absence of damage. The summer 2008 subsurface application results suggest that colonies treated with  $10$   $\mu$ g ai L<sup>-1</sup> penoxsulam and BC were unable to replace dying plants, with a similar nonsignificant trend for foliar applications in the test involving penoxsulam in August 2008, and specifically for penoxsulam in the winter 2008 test. The mechanism(s) driving the positive penoxsulam + BC interaction is/are uncertain but could relate to more rapid penetration of herbicide through wounds or systemic movement through increased transpiration. However, adult lesser knapweed flower weevils (*Larinus minutus* Gyllenhal) reduce transpiration in spotted knapweed leaves (*Centaurea stoebe* L. ssp. *Micranthos*; Wooley et al. 2011). The ability of waterhyacinth weevils to generate damage was not adversely affected by any of the three herbicides. Negative impacts on weevil population dynamics could occur in the field because 45 to 60 days are required to complete a beetle generation in warm conditions (Center et al. 2002), a time frame exceeding time to death in treatments involving penoxsulam or triclopyr under summer conditions.

Irrespective of BC, the results demonstrate lethality of triclopyr against waterhyacinth at a foliar rate 4.2-fold below the low end of label recommendations, albeit in artificial tank mesocosms. Glyphosate applied at a rate 6.8-fold below label recommendations caused limited (~40%) plant mortality but did reduce shoot gain in the summer 2009 test. In the case of penoxsulam, a dose intermediate to those used here ( $0.0245$  kg ai ha<sup>-1</sup>) without BC killed all waterhyacinth plants within 5 WAT (Wersal and Madsen 2010), consistent with the present results. In past studies, additive effects of herbicides and biological control were apparent only when herbicide ap-

TABLE 1. COMPARISON OF EFFICACY OF THREE HERBICIDES AGAINST WATERHYACINTH WITH BIOLOGICAL CONTROL DAMAGE IN A WINTER 2008 TEST.

Herbicide (dose)	Days to death (median) <sup>1</sup>	Change in shoot density <sup>2</sup>	Final DW (g) <sup>2</sup>
Penoxsulam + BC (0.035 kg ai ha <sup>-1</sup> )	43	-47.0 $\pm$ 5.0 c	100.7 $\pm$ 31.3 a
Triclopyr + BC (0.42 kg ae ha <sup>-1</sup> )	62	6.0 $\pm$ 24.8 bc	111.3 $\pm$ 27.2 a
Glyphosate + BC (0.56 kg ae ha <sup>-1</sup> )	67	50.8 $\pm$ 13.2 ab	161.9 $\pm$ 33.3 a
BC alone	75	110.5 $\pm$ 13.7 a	222.9 $\pm$ 39.1 a

<sup>1</sup>Test terminated 75 days after treatment.

<sup>2</sup>Means  $\pm$  SE. Means with the same letter(s) are not significantly different in Tukey mean comparisons ( $\alpha = 0.05$ ).



TABLE 2. COMPARISON OF EFFICACY OF THREE HERBICIDES AGAINST WATERHYACINTH WITH AND WITHOUT BIOLOGICAL CONTROL IN A SUMMER 2009 TEST.

Herbicide (dose)	Days to death (median) <sup>1</sup>	Change in shoot density <sup>2</sup>	Final DW (g) <sup>2</sup>
Penoxsulam (0.035 kg ai ha <sup>-1</sup> )	54	8.3 ± 16.9 b	31.7 ± 9.0 c
Penoxsulam + BC	40	1.3 ± 8.3 b	23.3 ± 23.3 c
Triclopyr (0.42 kg ae ha <sup>-1</sup> )	21	12.0 ± 14.0 b	60.3 ± 12.9 bc
Triclopyr + BC	21	-0.7 ± 5.0 b	84.0 ± 23.2 bc
Glyphosate (0.56 kg ae ha <sup>-1</sup> )	47	18.0 ± 6.8 b	9.3 ± 7.6 c
Glyphosate + BC	54	10.0 ± 11.8 b	86.0 ± 40.0 bc
BC alone	57	110.3 ± 9.8 a	219.1 ± 54.5 ab
Untreated	70	102.0 ± 10.6 a	246.6 ± 50.5 a

<sup>1</sup>Test terminated 70 days after treatment.<sup>2</sup>Means ± SE. Means with the same letter(s) are not significantly different in Tukey mean comparisons ( $\alpha = 0.05$ ).

plication rates were adjusted to sublethal levels. In the present study, both penoxsulam and triclopyr without BC caused waterhyacinth shoot death prior to test termination, possibly obscuring some efficacy-enhancing effects of biological control. The enhanced negative effects of penoxsulam + BC compared to penoxsulam alone on new shoot gain could be important in the field to prevent dispersal of detached daughter plants not directly exposed to foliar spray herbicide.

Additive or synergistic effects of herbicides and biological control may manifest as a reduction in herbicide dose needed to achieve control in a desired timeframe (Williams et al. 2004, Metzger et al. 2008, Nelson and Shearer 2008, 2009), or, as in the present study, as a decrease in the timeframe itself (Lym and Nelson 2002). Additional studies are needed to develop integrated weed management recommendations for waterhyacinth by evaluating several below-label doses of herbicides and multiple levels of weevil infestation against waterhyacinth under field conditions.

## ACKNOWLEDGMENTS

I thank Larry Hartmann and Mark Heilman at SePRO Inc. for samples of penoxsulam (Galleon® SC), and triclopyr (Renovate® 3), and Nufarm Americas Inc. for a sample of glyphosate (Aqua Neat®). Thanks to Connie J. Graham, H. Enrique Cabanillas, and Andy Cruz for technical assistance. Reviews by J. Scott Armstrong, LeeAnn Glomski and two anonymous reviewers greatly improved the manuscript.

## SOURCES OF MATERIALS

<sup>2</sup>Aquashade®, Applied Biochemists, W175 N11163 Stonewood Dr., Suite 234, Germantown, WI 53022

<sup>3</sup>CP Kelco U.S., 100 Parkwood Circle, Suite 1000, Atlanta, GA 30339.

<sup>4</sup>Brewer International, PO Box 690037, Vero Beach, FL 32969.

<sup>5</sup>Sigma-Aldrich Inc., PO Box 2060, Milwaukee, WI 53201.

<sup>6</sup>Galleon® SC, SePRO Inc., 11550 North Meridian St., Suite 600, Carmel, IN 46032

<sup>7</sup>Renovate® 3, SePRO Inc.

<sup>8</sup>Aqua Neat®, Nufarm Americas Inc, 150 Harvester Dr., Suite 200, Burr Ridge, IL 60527.

<sup>9</sup>Phase® MSO, Loveland Products, PO Box 1289, Greeley, CO 80632.

<sup>10</sup>RL Flo-Master® Model 1998TL, Root-Lowell Manufacturing, 1000 Foreman Rd., PO Box 289, Lowell, MI 49331.

## LITERATURE CITED

Ainsworth N. 2003. Integration of herbicides with arthropod biocontrol agents for weed control. *Biocontrol Sci. Technol.* 13:547-570.

*J. Aquat. Plant Manage.* 50: 2012.

Auld BA, Hetherington SD, Smith HE. 2003. Advances in bioherbicide formulation. *Weed Biol. Manage.* 3:61-67.

Boydston R. 2004. Combined effects of *Aceria malherbae* and herbicides on field bindweed (*Convolvulus arvensis*) growth. *Weed Sci.* 52:297-301.

Center TD, Dray FA Jr. 1992. Associations between waterhyacinth weevils (*Neochetina eichhorniae* and *N. bruchi*) and phenological stages of *Eichhornia crassipes* in Southern Florida. *Fla. Entomol.* 75:196-211.

Center TD, Dray FA Jr, Jubinsky GP, Grodowitz MJ. 1999. Biological control of water hyacinth under conditions of maintenance management: can herbicides and insects be integrated? *Environ. Manage.* 23:241-256.

Center TD, Dray FA Jr. 2010. Bottom-up control of water hyacinth weevil populations: do the plants regulate the insects? *J. Appl. Ecol.* 47:329-337.

Center TD, Hill MP, Cordo H, Julien MH. 2002. Waterhyacinth, pp. 41-64. In: R. Van Driesche, S. Lyon, B. Blossey, M. Hoddle, and R. Reardon. (eds.). Biological control of invasive plants in the eastern United States. Report FHTET-2002-04, USDA-Forest Service, Forest Health Technology Enterprise Team, Morgantown, WV.

Charudattan R. 1986. Integrated control of waterhyacinth (*Eichhornia crassipes*) with a pathogen, insects, and herbicides. *Weed Sci.* 34:26-30.

Charudattan R. 2001. Biological control of water hyacinth by using pathogens: opportunities, challenges, and recent developments, pp. 21-28. In: M. H. Julien, M. P. Hill, T. D. Center and D. Jianqing (eds.). Biological and integrated control of water hyacinth, *Eichhornia crassipes*. Proceedings of the Second Meeting of the Global Working Group for the Biological and Integrated Control of Water Hyacinth, Beijing, China, 9-12 October, 2000. Canberra, Australia. Australian Center for International Agricultural Research, Canberra.

Colby SR. 1967. Calculating synergistic and antagonistic responses of herbicide combinations. *Weeds.* 15:20-22.

EPA (Environmental Protection Agency). 2010. Environmental Protection Agency National Pollutant Discharge Elimination System (NPDES) Draft Pesticides General Permit. Washington, DC. [http://www.epa.gov/npdes/pubs/proposed\\_pgpr.pdf](http://www.epa.gov/npdes/pubs/proposed_pgpr.pdf). 56 pp. Accessed 7 October 2011.

Gettys LA. 2009. Waterhyacinth, pp. 113-118. In: L. A. Gettys, W. T. Haller, M. Bellaud (eds.). Biology and control of aquatic plants: a best management practices handbook. Aquatic Ecosystem Restoration Foundation, Marietta, GA.

Haag KH. 1986. Effects of herbicide application on mortality and dispersive behavior of the water hyacinth weevils, *Neochetina eichhorniae* and *Neochetina bruchi* (Coleoptera: Curculionidae). *Environ. Entomol.* 15:1192-1198.

Haag KH, Habeck DH. 1991. Enhanced biological control of waterhyacinth following limited herbicide application. *J. Aquat. Plant Manage.* 29:24-28.

Hallett SG. 2005. Where are the bioherbicides? *Weed Sci.* 53:404-415.

Hill MP, Coetzee JA. 2008. Integrated control of water hyacinth in Africa. *EPPO Bull.* 38:452-457.

Jadhav A., Hill MP, Byrne M. 2008. Identification of a retardant dose of glyphosate with potential for integrated control of waterhyacinth, *Eichhornia crassipes* (Mart.) Solms-Laubach. *Biol. Control.* 47:154-158.

Julien MH. 2001. Biological control of water hyacinth with arthropods: a review to 2000, pp. 8-19. In: M. H. Julien, M. P. Hill, T. D. Center and D. Jianqing, D. (eds.). Biological and integrated control of water hyacinth, *Eichhornia crassipes*. Proceedings of the Second Meeting of the Global Working Group for the Biological and Integrated Control of Water Hyacinth, Beijing, China, 9-12 October, 2000. Canberra, Australia. Australian Center for International Agricultural Research, Canberra.

Lindgren CJ, Gabor TS, Murkin HR. 1998. Impact of triclopyr amine on *Ga-*

- lerucella californiensis* L. (Coleoptera: Chrysomelidae) and a step toward integrated management of purple loosestrife *Lythrum salicaria* L. Biol. Control. 12:14-19.
- Lindgren CJ, Gabor TS, Murkin HR. 1999. Compatibility of glyphosate with *Galerucella californiensis*, a biological control agent for purple loosestrife (*Lythrum salicaria*). J. Aquat. Plant Manage. 37:44-48.
- Lym RG, Nelson JA. 2002. Integration of *Aphis* spp. flea beetles and herbicides for leafy spurge (*Euphorbia esula*) control. Weed Sci. 50:812-819.
- Martínez Jiménez M, Gómez Balandra MA. 2007. Integrated control of *Eichhornia crassipes* by using insects and plant pathogens in Mexico. Crop Prot. 26:1234-1238.
- Metzger C, Boydston R, Ferguson H, Williams MH II, Zack R, Walsh D. 2008. Interactions between population density of the Colorado potato beetle, *Leptinotarsa decemlineata*, and herbicide rate for suppression of solanaceous weeds. J. Insect Sci. 8:38. 10 pp. Available at <http://www.insect-science.org/8.38>.
- Moran PJ. 2004. Feeding by waterhyacinth weevils (*Neochetina* spp.) (Coleoptera: Curculionidae) in relation to site, plant biomass and biochemical factors. Environ. Entomol. 33:346-355.
- Moran PJ. 2005. Leaf scarring by the weevils *Neochetina eichhorniae* and *N. bruchi* enhances infection by the fungus *Cercospora piaropi* on waterhyacinth, *Eichhornia crassipes*. Bio. Control. 50:511-524.
- Nelson LS, Shearer JF. 2008. Evaluation of triclopyr and *Mycleptodiscus terrestris* for control of Eurasian watermilfoil (*Myriophyllum spicatum*). Invasive Plant Sci. Manage. 1:337-342.
- Nelson LS, Shearer JF. 2009. Integrated weed management strategies for control of hydrilla. APCRP Technical Notes Collection (TN APCRP CC-09), U.S. Army Engineer Research and Development Center, Vicksburg, MS. 6 pp.
- Netherland MD. 2009. Chemical control of aquatic weeds, pp. 65-78. In: L.A. Gettys, W.T. Hallerand, M. Bellaud (eds.). Biology and control of aquatic plants: a best management practices handbook. Aquatic Ecosystem Restoration Foundation, Marietta, GA.
- Nufarm. 2008. Aqua Neat specimen label. Nufarm Americas Inc., Burr Ridge, IL. <http://www.cdms.net/LDat/IdNEO05.pdf>. 9 p. Accessed 9 December 2010.
- Patnaik NC, Mohapatra LN, Ghode MK, Mishra BK. 1987. Effects of some weedicides on the waterhyacinth weevil (*Neochetina bruchi* Hustache) and its weed host. Plant Prot. Bull. 39:23-26.
- Rees NE, Fay PK. 1989. Survival of leafy spurge hawk moths (*Hyles euphorbiae*) when larvae are exposed to 2,4-D or picloram. Weed Technol. 3:429-431.
- Richardson RJ. 2008. Aquatic plant management and the impact of emerging herbicide resistance issues. Weed Technol. 22:8-15.
- Richardson RJ, Gardner AP. 2007. Evaluation of penoxsulam for water hyacinth (*Eichhornia crassipes* (Mart.) Solms.) and giant salvinia (*Salvinia molesta* Mitchell) control. Weed Sci. Soc. Abstr. 47:58.
- Room PM, Julien MH, Forno IW. 1989. Vigorous plants suffer most from herbivores: latitude, nitrogen and biological control of the weed *Salvinia molesta*. Oikos. 54:92-100.
- Santos MJ, Khanna S, Hestir EL, Andrew ME, Rajapakse SS, Greenberg JA, Anderson LW, Ystin SL. 2009. Use of hyperspectral remote sensing to evaluate efficacy of aquatic plant management. Inv. Plant Sci. Manage. 2:216-229.
- SAS Institute. 2004. SAS/STAT v9.1.3 for Windows. SAS Institute, Cary, NC.
- Schooler SS, Yeates AG, Wilson JR, Julien MH. 2007. Herbivory, mowing, and herbicides differently affect production and nutrient allocation of *Alternanthera philoxeroides*. Aquat. Bot. 86:62-68.
- SePRO Inc. 2009a. Galleon® SC specimen label. SePRO Inc., Carmel, Indiana. [http://www.sepro.com/documents/Galleon\\_Label.pdf](http://www.sepro.com/documents/Galleon_Label.pdf). 7 p. Accessed 9 December 2010.
- SePRO Inc. 2009b. Renovate® 3 specimen label. SePRO Inc., Carmel, Indiana. [http://www.sepro.com/documents/Renovate\\_Label.pdf](http://www.sepro.com/documents/Renovate_Label.pdf). 7 p. Accessed 9 December 2010.
- Spencer DF, Ksander GS. 2004. Do tissue carbon and nitrogen limit population growth of weevils introduced to control waterhyacinth at a site in Sacramento-San Joaquin Delta, California? J. Aquat. Plant Manage. 42:45-48.
- Tipping PW. 1991. Effects of mowing or spraying *Carduus thomeri* on *Rhincyllus conicus*. Weed Technol. 5:628-631.
- Van Driesche RG, Carruthers RI, Center TD, Hoddle MS, Hough-Goldstein J, Morin L, Smith M, Wagner DW et al. 2010. Classical biological control for the protection of natural ecosystems. Biol. Control Suppl. 1:S2-S33.
- Wersal RM, Madsen JD. 2010. Combinations of penoxsulam and diquat as foliar applications for control of waterhyacinth and common salvinia: evidence of herbicide antagonism. J. Aquat. Plant Manage. 48:21-25.
- Wheeler GS, Center TD. 1996. The influence of leaf quality on larval growth and development of the biological control agent *Hydrellia pakistanae* (Diptera: Ephydriidae). Biol. Control. 7:1-9.
- Williams MM II, Walsh DB, Boydston RA. 2004. Integrating arthropod herbivory and reduced herbicide use for weed management. Weed Sci. 52:1018-1025.
- Wilson JR, Rees M, Ajounu O. 2006. Population regulation of a classical biocontrol agent: larval density dependence in *Neochetina eichhorniae* (Coleoptera: curculionidae), a biological control agent of water hyacinth *Eichhornia crassipes*. Bull. Entomol. Res. 96:145-152.
- Wooley SC, Smith B, King C, Seastedt TR, Knochel DR. 2011. The lesser of two weevils: physiological responses of spotted knapweed (*Centaurea stoebe*) to above- and belowground herbivory by *Larinus minutus* and *Cyphocleonus achates*. Biocontrol Sci. Technol. 21:153-170.
- Wright ADD, Bourne AS. 1990. Effect of 2,4-D on the quality of waterhyacinth as food for insects. Plant Prot. Quart. 5:139-141.