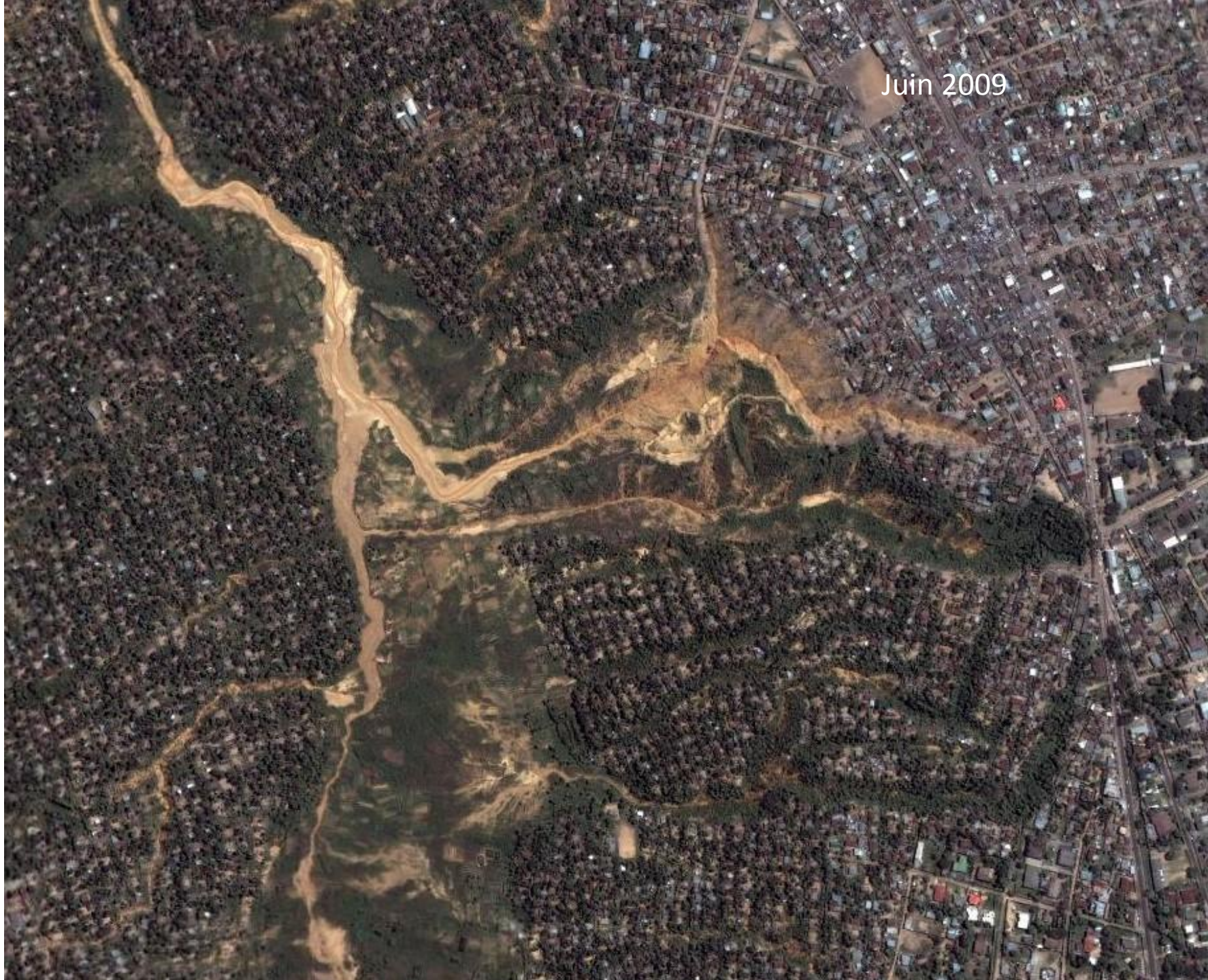
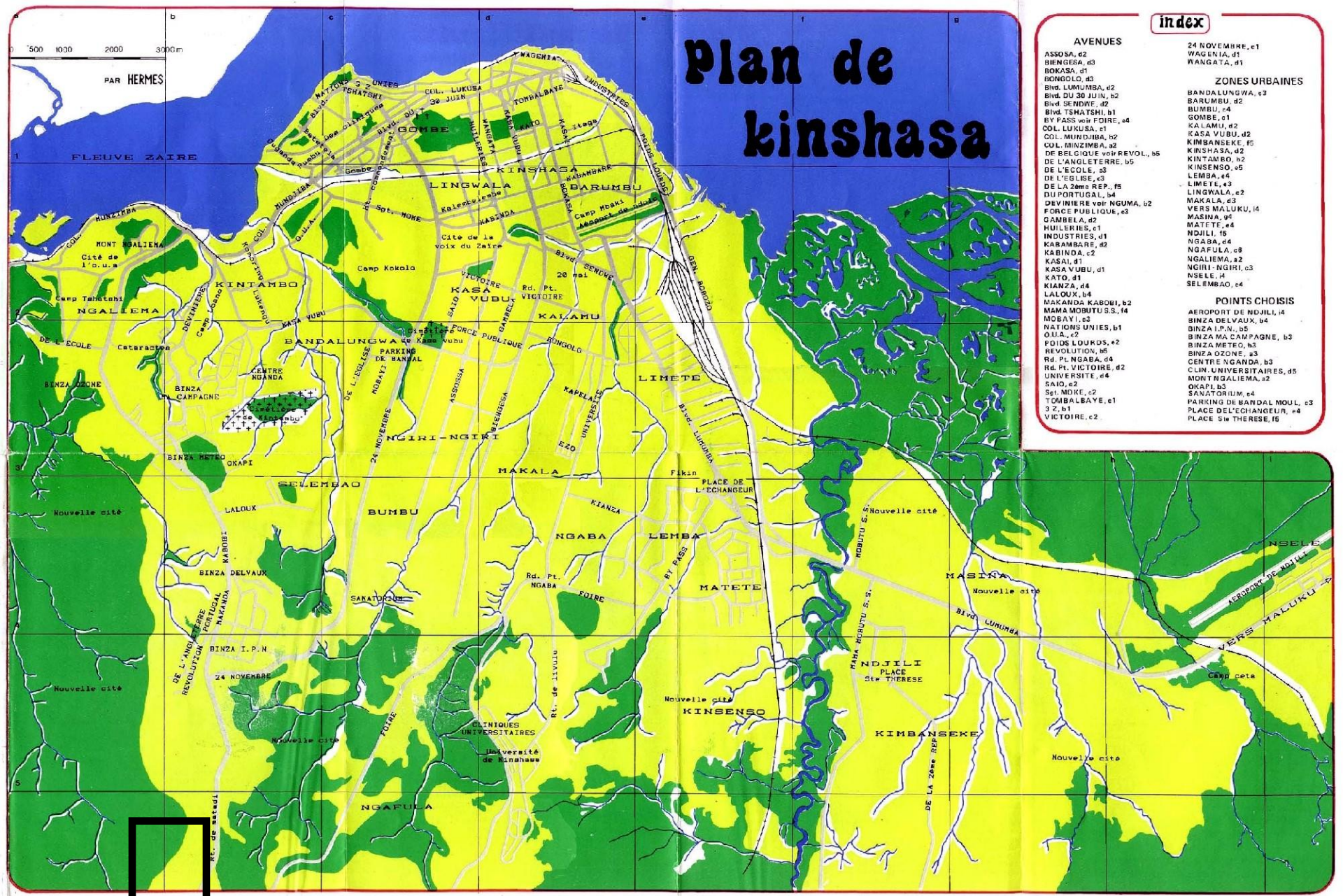


Mataba II gully, Binza Delvaux, Kinshasa¹

Juin 2009

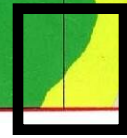




Plan de Kinshasa

index

- AVENUES**
- ASSOSA, e2
 - BIENGESE, d3
 - BOKASA, d1
 - BONGOLO, d5
 - BIND. LUMUMBA, e2
 - Bind. DU 30 JUIN, b2
 - Bind SENDWE, d2
 - Bind. TSMATSHI, b1
 - BY PASS voir FOIRE, e4
 - COL. LUKUSA, e1
 - COL. MININDJBA, b2
 - COL. MINZIMBA, a2
 - DE BELGIQUE voir REVOL., b5
 - DE L'ANGLETERRE, b5
 - DE L'ECOLE, b3
 - DE L'EGLISE, c3
 - DE LA 2ème REP., f5
 - DU PORTUGAL, b4
 - DEVINIERE voir NGUMA, b2
 - FORCE PUBLIQUE, e3
 - GAMBELA, d2
 - HUILERIES, e1
 - INDUSTRIES, d1
 - KABAMBAE, d2
 - KABINDA, c2
 - KASAI, d1
 - KASA VUBU, d1
 - KATO, d1
 - KIANZA, d4
 - LALOUX, b4
 - MAKANDA KABORI, b2
 - MAMA MOBUTU S.S., f4
 - MOBAYI, c3
 - NATIONS UNIES, b1
 - OJIA, c2
 - FOIDS LOURDS, e2
 - REVOLUTION, b5
 - Rd. Pt. NGABA, d4
 - Rd. Pt. VICTOIRE, d2
 - SAID, e2
 - SE MOYE, c2
 - TOMBALBAYE, e1
 - 3 Z, b1
 - VICTOIRE, c2
- ZONES URBAINES**
- BANDALUNGWA, c3
 - BARUMBU, d2
 - BUMBU, f4
 - GOMBE, e1
 - KALAMI, d2
 - KASA VUBU, d2
 - KIMBANSEKE, f5
 - KINSHASA, d2
 - KINTAMBO, b2
 - KINSENSO, e5
 - LEMBA, e4
 - LIMETE, e3
 - LINGWALA, e2
 - MAKALA, d3
 - VERS MALUKU, f4
 - MASINA, g5
 - MATETE, e4
 - NDJILI, f5
 - NGABA, d4
 - NGAFULA, e8
 - NGALIEMA, a2
 - NGIRI-NGIRI, c3
 - NSELE, f4
 - SELEMBAO, e4
- POINTS CHOISIS**
- AEROPORT DE NDJILI, f4
 - BINZA DELVAUX, b4
 - BINZA I.P.N., b5
 - BINZA MA CAMPAGNE, b3
 - BINZA METRO, b5
 - BINZA OZONE, a3
 - CENTRE NGANDA, b3
 - CUN. UNIVERSITAIRES, d5
 - MONT NGALIEMA, a2
 - OKAPI, b3
 - SANATORIUM, e4
 - PARKING DE BANDAL NGUL, c3
 - PLACE DE L'ECHANGEUR, e4
 - PLACE St THERISE, f5



Cité Maman Mobutu



FILS.Com

BUSINESS

APPEL:

ATMIZO



Maman Mobutu



Maman Mobutu



Maman Mobutu



28/01/2010 15:16

Maman Mobutu

Uvira, South Kivu, DRC



Bujumbura, Burundi





Butembo, North Kivu, DRC



Kikwit, DRC

MITIGATION & PREVENTION



Canalisation of runoff



Infiltration pits



Debris accummulation



Sand bags, plastic, tyres...



Check dams



Large constructions

CONCLUSION

Large increase in frequency of hydro-meteorological events since 1990s!

Concentration of events in Rwanda-Burundi-Kivu, and especially in URBAN areas, due to land use, population density, high rainfall...

Further collection of information via the
Réseau de Correspondants (RéCO)

Focus on risk assessment and soil & water conservation!

Many thanks to the YES network for their sponsorship!

Thank you!!