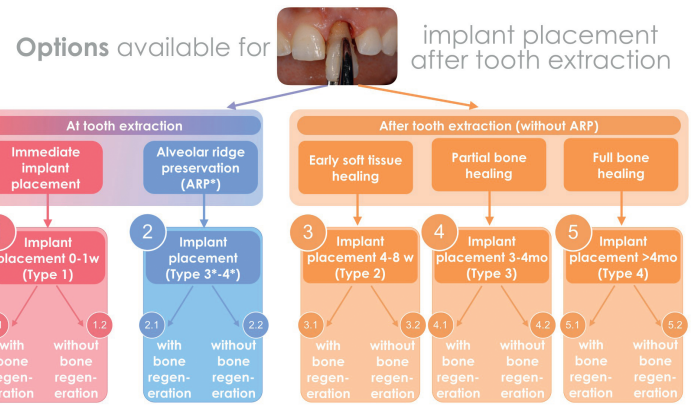
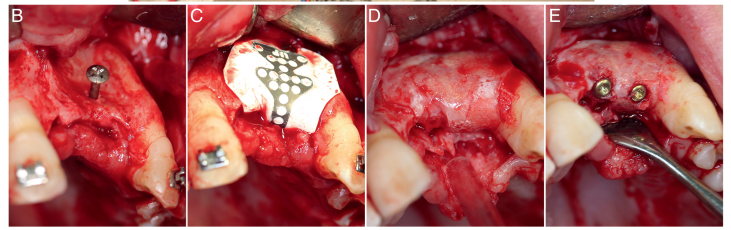
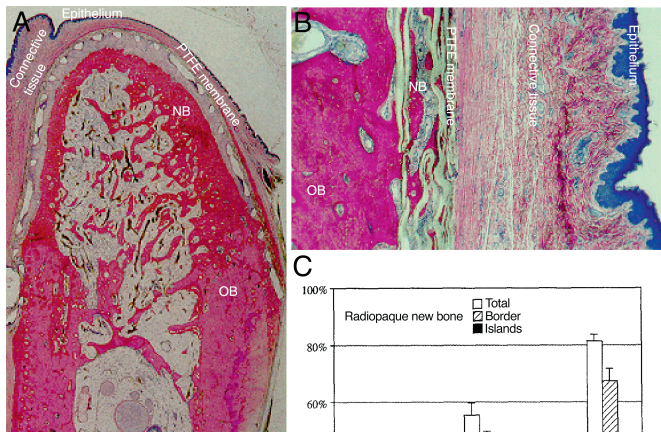
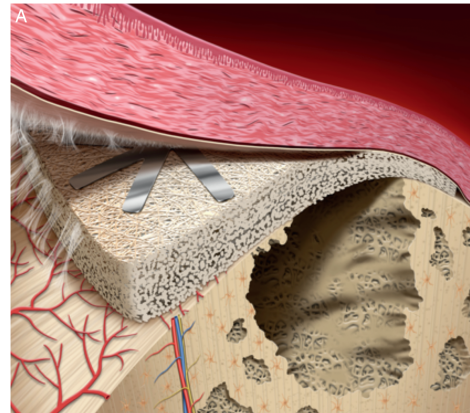
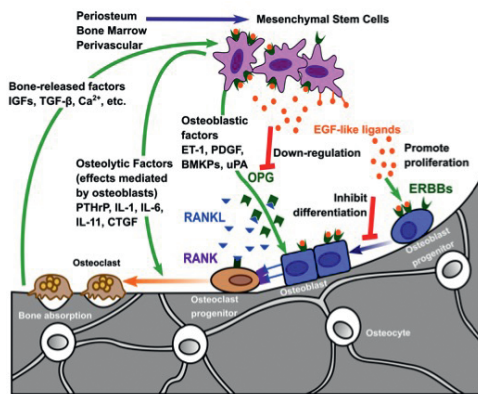


Journal of Clinical Periodontology



Bone Regeneration. Proceedings of the European Workshop of Periodontology jointly Held by the Osteology Foundation and European Federation of Periodontology



Official scientific Journal of the European Federation of Periodontology and its member National Societies

Editor: Maurizio Tonetti

Journal of Clinical Periodontology

Official journal of the
European Federation of Periodontology

Founded by the British, Dutch, French, German,
Scandinavian and Swiss Societies of Periodontology

wileyonlinelibrary.com/journal/jcpe

EDITOR-IN-CHIEF:

Maurizio Tonetti
Journal of Clinical Periodontology
Editorial Office
John Wiley & Sons Ltd
9600 Garsington Road, Oxford
OX4 2DQ, UK
E-mail: cpeedoffice@wiley.com

ASSOCIATE EDITORS:

T. Berglundh, Göteborg, Sweden
I. Chapple, Birmingham, UK
R. Demmer, New York, NY, USA
G. Hajishengallis, Philadelphia, PA, USA
S. Jepsen, Bonn, Germany
M. Quirynen, Leuven, Belgium
M. Sanz, Madrid, Spain
F. Schwarz, Düsseldorf, Germany
P. Sharpe, London, UK

STATISTICAL ADVISER:

J. C. Gunsolley, Richmond, VA, USA

EDITOR EMERITUS:

J. Lindhe, Gothenburg, Sweden

EDITORIAL BOARD:

P. Adriaens, Brussels, Belgium
J. Albandar, Philadelphia, PA, USA
G. Armitage, San Francisco, CA, USA
D. Botticelli, Rimini, Italy
P. Bouchard, Paris, France
A. Braun, Marburg, Germany
K. Buhlin, Huddinge, Sweden
M. Christgau, Düsseldorf, Germany
P. Cortellini, Florence, Italy
F. Cairo, Florence, Italy
G. Dahlen, Gothenburg, Sweden
P. Eickholz, Frankfurt, Germany
D. Fine, Newark, NJ, USA
T. Flemmig, Seattle, WA, USA
W. V. Giannobile, Ann Arbor, MI, USA
P. Gjermo, Oslo, Norway
F. Graziani, Pisa, Italy
A. Guerrero, Malaga, Spain
A. Gustafsson, Stockholm, Sweden
D. A. Heasman, Newcastle, UK
D. V. Herrera, Madrid, Spain
P. Holmstrup, Copenhagen, Denmark

P. Hujoel, Seattle, WA, USA

J. Hyman, Vienna, VA, USA
I. Ishikawa, Tokyo, Japan
J. Jansen, Nijmegen, the Netherlands
P.-M. Jervøe-Storm, Bonn, Germany
L. J. Jin, Hong Kong SAR, China
A. Kantarci, Boston, MA, USA
D. F. Kinane, Louisville, KY, USA
M. Kepschull, Bonn, Germany
M. Klepp, Stavanger, Norway
T. Kocher, Greifswald, Germany
E. Lalla, New York, NY, USA
N. P. Lang, Berne, Switzerland
G. J. Linden, Belfast, UK
B. G. Loos, Amsterdam, the Netherlands
H. Meijer, Groningen, Netherlands
J. Meyle, Giessen, Germany
B. Michalowicz, Minneapolis, MN, USA
A. Mombelli, Geneva, Switzerland
S. Murakami, Osaka, Japan
I. G. Needleman, London, UK
L. Nibali, London, UK
M. Nunn, Boston, MA, USA
T. Oates, San Antonio, TX, USA
R. M. Palmer, London, UK

D. W. Paquette, Chapel Hill, NC, USA

G. Pini-Prato, Florence, Italy
P. Preshaw, Newcastle upon Tyne, UK
M. Ryder, San Francisco, CA, USA
G. E. Salvi, Berne, Switzerland
A. Schaefer, Kiel-Schleswig-Holstein, Germany
D. A. Scott, Louisville, Kentucky, USA
A. Sculean, Berne, Switzerland
L. Shapira, Jerusalem, Israel
B. Stadlinger, Zürich, Switzerland
A. Stavropoulos, Aarhus C, Denmark
D. Tatakis, Columbus, OH, USA
R. Teles, Boston, MA, USA
L. Trombelli, Ferrara, Italy
Y.-K. Tu, Taipei, Taiwan
A. J. van Winkelhoff, Groningen, the Netherlands
U. van der Velden, Amsterdam, the Netherlands
F. Vignoletti, Madrid, Spain
H. Wachtel, Munich, Germany
H.-L. Wang, Ann Arbor, MI, USA
J. L. Wennström, Gothenburg, Sweden
U. M. E. Wikesjö, Martinez, GA, USA

Aim and Scope

The aim of the *Journal of Clinical Periodontology* is to provide the platform for exchange of scientific and clinical progress in the field of periodontology and allied disciplines, and to do so at the highest possible level. The Journal also aims to facilitate the application of new scientific knowledge to the daily practice of the concerned disciplines and addresses both practicing clinicians and academics. The Journal is the official publication of the European Federation of Periodontology but wishes to retain its international scope. The Journal publishes original contributions of high scientific merit in the fields of periodontology and implant dentistry. Its scope encompasses the physiology and pathology of the periodontium, the tissue integration of dental implants, the biology and the modulation of periodontal and alveolar bone healing and regeneration, diagnosis, epidemiology, prevention and therapy of periodontal disease, the clinical aspects of tooth replacement with dental implants, and the comprehensive rehabilitation of the periodontal patient. Review articles by experts on new developments in basic and applied periodontal science and associated dental disciplines, advances in periodontal or implant techniques and procedures, and case reports which illustrate important new information are also welcome.

The *Journal of Clinical Periodontology* is available to members of the American Academy of Periodontology, the Australian Society of Periodontology and the Canadian Academy of Periodontology at a reduced rate. Please contact your society for further details. For submission instructions, subscription and all other information visit: wileyonlinelibrary.com/journal/jcpe.

Disclaimer

The Publisher and Editor cannot be held responsible for errors or any consequences arising from the use of information contained in this journal; the views and opinions expressed do not necessarily reflect those of the Publisher and Editor, neither does the publication of advertisements constitute any endorsement by the Publisher and Editor of the products advertised.

Copyright © 2018 John Wiley & Sons A/S. Published by John Wiley & Sons Ltd. All rights reserved. No part of this publication may be reproduced, stored or transmitted in any form or by any means without the prior permission in writing from the copyright holder. Authorization to copy items for internal and personal use is granted by the copyright holder for libraries and other users registered with their local Reproduction Rights Organisation (RRO), e.g. Copyright Clearance Center (CCC), 222 Rosewood Drive, Danvers, MA 01923, USA (www.copyright.com), provided the appropriate fee is paid directly to the RRO. This consent does not extend to other kinds of copying such as copying for general distribution, for advertising or promotional purposes, for creating new collective works or for resale. Special requests should be addressed to: permissionsuk@wiley.com.

Information for subscribers

The JOURNAL OF CLINICAL PERIODONTOLOGY (ISSN 0303-6979 [print], ISSN 1600-051X [online]) is published monthly. US mailing agent: Mercury Media Processing, LLC 1850 Elizabeth Avenue, Suite #C, Rahway, NJ 07065 USA. Periodical postage paid at Rahway, NJ. Postmaster: Send all address changes to the JOURNAL OF CLINICAL PERIODONTOLOGY, John Wiley & Sons Inc., C/O The Sheridan Press, PO Box 465, Hanover, PA 17331. Institutional subscription prices for 2018 are: Print & Online (premium): €1574 (Europe), US\$2079 (The Americas), US\$2424 (Rest of World). Prices are exclusive of tax. Australian GST, Canadian GST/HST and European VAT will be applied at the appropriate rates. For more information on current tax rates, please go to wileyonlinelibrary.com/tax-vat. The institutional price includes online access to the current and all online back files to January 1st 2014, where available. For other pricing options, including access information and terms and conditions, please visit wileyonlinelibrary.com/access. Where the subscription price includes print issues and delivery is to the recipient's address, delivery terms are Delivered at Place (DAP); the recipient is responsible for paying any import duty or taxes. Title to all issues transfers FOB our shipping point, freight prepaid. We will endeavour to fulfil claims for missing or damaged copies within six months of publication, within our reasonable discretion and subject to availability.

Back issues

Single issues from current and prior year volumes are available at the current single issue price from cs-journals@wiley.com. Earlier issues may be obtained from Periodicals Service Company, 351 Fairview Avenue - Ste 300, Hudson, NY 12534, USA. Tel: +1 518 822-9300, Fax: +1 518 822-9305, Email: psc@periodicals.com.

Publisher

The *Journal of Clinical Periodontology* is published by John Wiley & Sons Ltd, 9600 Garsington Road, Oxford OX4 2DQ, UK. Tel: +44 (0) 1865 776868; Fax: +44 (0) 1865 714591.

Journal Customer Services: For ordering information, claims and any enquiry concerning your journal subscription please go to wileycustomerhelp.com/ask or contact your nearest office:

Americas: Email: cs-journals@wiley.com; Tel: +1 781 388 8598 or 1 800 835 6770 (Toll free in the USA and Canada)

Europe, Middle East and Africa: Email: cs-journals@wiley.com; Tel: +44 (0) 1865 778315

Asia Pacific: Email: cs-journals@wiley.com; Tel: +65 6511 8000

Japan: For Japanese speaking support, Email: cs-japan@wiley.com; Tel: +65 6511 8010 or (toll free): 005 316 50 480. **Visit our Online Customer Get-Help** available in 6 languages at wileycustomerhelp.com.

Production Editor: Jenifer Jimenez (email: jcpe@wiley.com)

Advertising and commercial reprints: Martin Nielsen (email: msn@wiley.com)

Wiley's Corporate Citizenship initiative seeks to address the environmental, social, economic, and ethical challenges faced in our business and which are important to our diverse stakeholder groups. We have made a long-term commitment to standardize and improve our efforts around the world to reduce our carbon footprint. Follow our progress at www.wiley.com/go/citizenship

Wiley Online Library: This journal is available online at *Wiley Online Library*. Visit wileyonlinelibrary.com/journal/jcpe to search the articles and register for table of contents e-mail alerts.

Hinari: Access to this journal is available free online within institutions in the developing world through the HINARI initiative with the WHO. For information, visit www.healthinternetwork.org.

Note to NIH Grantees: Pursuant to NIH mandate, Wiley will post the accepted version of contributions authored by NIH grant-holders to PubMed Central upon acceptance. This accepted version will be made publicly available 12 months after publication. For further information, see www.wiley.com/go/nihmandate.

COS - Printed in Singapore by C.O.S. Printers Pte Ltd.

ISSN 0303-6979 (print)

ISSN 1600-051X (online)

AUTHOR GUIDELINES

Journal of Clinical Periodontology publishes original contributions of high scientific merit in the fields of periodontology and implant dentistry. Its scope encompasses the physiology and pathology of the periodontium, the tissue integration of dental implants, the biology and the modulation of periodontal and alveolar bone healing and regeneration, diagnosis, epidemiology, prevention and therapy of periodontal disease, the clinical aspects of tooth replacement with dental implants, and the comprehensive rehabilitation of the periodontal patient. Review articles by experts on new developments in basic and applied periodontal science and associated dental disciplines, advances in periodontal or implant techniques and procedures, and case reports which illustrate important new information are also welcome.

Please read the instructions below for brief details on the Journal's requirements for manuscripts. Please visit the journal webpage wileyonlinelibrary.com for full and updated Author Guidelines and the Blackwell Publishing website for authors <http://authorservices.wiley.com/bauthor/> for further information on the preparation and submission of articles and figures. Manuscripts in an incorrect format may be returned to the author.

MANUSCRIPT SUBMISSION

The submission and review process of *Journal of Clinical Periodontology* is handled online at <http://mc.manuscriptcentral.com/jcpe>. To submit an article to *Journal of Clinical Periodontology* please go to <http://mc.manuscriptcentral.com/jcpe>, create an account and submit your article. Complete instructions on how to submit a paper is available online and at the Journal webpage wileyonlinelibrary.com/journal/jcpe.

Further assistance can be obtained from the journal administrator at cepedoffi@wiley.com. The journal to which you are submitting your manuscript employs a plagiarism detection system. By submitting your manuscript to this journal you accept that your manuscript may be screened for plagiarism against previously published works.

MANUSCRIPT STYLE AND STRUCTURE

Abbreviations, symbols and nomenclature: *Journal of Clinical Periodontology* adheres to the conventions outlined in Units, Symbols and Abbreviations: A Guide for Medical and Scientific Editors and Authors. Abbreviations should be kept to a minimum, particularly those that are not standard. Non-standard abbreviations must be used three or more times and written out completely in the text when first used.

Structure: All manuscripts submitted to *Journal of Clinical Periodontology* should include: Title Page, Abstract, and References. In addition, *Journal of Clinical Periodontology* requires that all articles include a section on Clinical Relevance and disclose Source of Funding and Conflict of Interests. Figures, Figure Legends and Tables should be included where appropriate.

Title Page: The title must be concise and contain no more than 100 characters including spaces. The title page should include a running title of no more than 40 characters; 5-10 key words, complete names of institutions for each author, and the name, address, telephone number, fax number and e-mail address for the corresponding author.

Conflict of Interest and Source of Funding: Authors are required to disclose all sources of institutional, private and corporate financial support for their study. Suppliers of materials (for free or at a discount from current rates) should be named in the source of funding and their location (town, state/county, country) included. Other suppliers will be identified in the text. If no funding has been available other than that of the author's institution, this should be specified upon submission. Authors are also required to disclose any potential conflict of interest. These include financial interests (for example patent, ownership, stock ownership, consultancies, speaker's fee,) or provision of study materials by their manufacturer for free or at a discount from current rates. Author's conflict of interest (or information specifying the absence of conflicts of interest) and the sources of funding for the research will be published under a separate heading entitled "Conflict of Interest and Source of Funding Statement". See Editor-in-Chief Maurizio Tonetti's Editorial on Conflict of Interest and Source of Funding at <http://www.blackwell-synergy.com/doi/pdf/10.1111/j.1600-051X.2006.00948.x>

Abstract: is limited to 200 words in length and should not contain abbreviations or references. The abstract should be organized according to the content of the paper. For Original Research Articles the abstract should be organized with aim, materials and methods, results and conclusions. For clinical trials, it is encouraged that the abstract finish with the clinical trial registration number on a free public database such as clinicaltrials.gov.

Clinical Relevance: This section is aimed at giving clinicians a reading light to put the present research in perspective. It should be no more than 100 words and should not be a repetition of the abstract. It should provide a clear and concise explanation of the rationale for the study, of what was known before and of how the present results advance knowledge of this field. If appropriate, it may also contain suggestions for clinical practice. It should be structured with the following headings: scientific rationale for study, principal findings, and practical implications. Authors should pay particular attention to this text as it will be published in a highlighted box within their manuscript; ideally, reading this section should leave clinicians wishing to learn more about the topic and encourage them to read the full article.

Original Research Articles must describe significant and original experimental observations and provide sufficient detail so that the observations can be critically evaluated and, if necessary, repeated. Original articles will be published under the heading of clinical periodontology, implant dentistry or pre-clinical sciences and must conform to the highest international standards in the field. The word limit for original research articles is 3500 words, and up to 7 items (figures and tables) may be included. Additional items can be included as supplementary files online.

Main Text of Original Research Article: should be organized with Introduction, Materials and Methods, Results and Discussion. The background and hypotheses underlying the study, as well as its main conclusions, should be clearly explained.

Introduction: should be focused, outlining the historical or logical origins of the study and not summarize the results; exhaustive literature reviews are not appropriate. It should close with the explicit statement of the specific aims of the investigation.

Material and Methods: must contain sufficient detail such that, in combination with the references cited, all clinical trials and experiments reported can be fully reproduced. As a condition of publication, authors are required to make materials and methods used freely available to academic researchers for their own use. This includes antibodies and the constructs used to make transgenic animals, although not the animals themselves.

(a) **Clinical Trials:** Papers reporting clinical trials should use the CONSORT guidelines available at www.consort-statement.org. A CONSORT Checklist must be included in the submission material. *Journal of Clinical Periodontology* encourages authors submitting manuscripts reporting from a clinical trial to register the trials in any of the following free, public clinical trials registries: www.clinicaltrials.gov, <http://clinicaltrials-dev.ipma.org/>, <http://isrctn.org/>. The clinical trial registration number and name of the trial register will then be published with the paper.

(b) **Statistical Analysis:** As papers frequently provide insufficient detail as to the performed statistical analyses, please describe with adequate detail. For clinical trials intention to treat analyses are encouraged (the reasons for choosing other types of analysis should be highlighted in the submission letter and clarified in the manuscript).

(c) **DNA Sequences and Crystallographic Structure Determinations:** Papers reporting protein or DNA sequences and crystallographic structure determinations will not be accepted without a Genbank or Brookhaven accession number, respectively. Other supporting data sets must be made available on the publication date from the authors directly.

(d) **Experimental Subjects:** All studies using human or animal subjects should include an explicit statement identifying the review and ethics committee approval for each study, if applicable. Editors reserve the right to reject papers if there is doubt as to whether appropriate procedures have been used.

Results: should present the observations with minimal reference to earlier literature or to possible interpretations.

Discussion: may usefully start with a brief summary of the major findings, but repetition of parts of the abstract or of the results section should be avoided. The discussion section should end with a brief conclusion and a comment on the potential clinical relevance of the findings. Statements and interpretation of the data should be appropriately supported by original references.

Clinical Innovation Reports are suited to describe significant improvements in clinical practice such as the report of a novel surgical technique, a breakthrough in technology or practical approaches to recognized clinical challenges. They should conform to the highest scientific and clinical practice standards. The word limit for clinical innovation reports is 3000 words, and up to 12 items (figures and tables) may be included. Additional items can be included as supplementary files online. The main text of Clinical Innovation Reports should be organized with Introduction, Clinical Innovation Report, Discussion and Conclusion.

Case Reports illustrating unusual and clinically relevant observations are acceptable but their merit needs to provide high priority for publication in the Journal. On rare occasions, completed cases displaying non-obvious solutions to significant clinical challenges will be considered. The main text of Case Reports should be organized with Introduction, Case report, Discussion and Conclusion.

Reviews are selected for their broad general interest; all are refereed by experts in the field who are asked to comment on issues such as timeliness, general interest and balanced treatment of controversies, as well as on scientific accuracy. Reviews should take a broad view of the field rather than merely summarizing the authors' own previous work, so extensive citation of the authors' own publications is discouraged. The use of state-of-the-art evidence-based systematic approaches is expected. Reviews are frequently commissioned by the editors and, as such, authors are encouraged to submit a proposal to the Journal. Review proposals should include a full-page summary of the proposed contents with key references. The main text of Reviews should be organized with Introduction, Review of Current Literature, Discussion and Conclusion. The word limit for reviews is 4000 words.

Acknowledgements: Under acknowledgements please specify contributors to the article other than the authors accredited.

References: The Journal follows the Harvard reference style. For full details, please see the Journal webpage www.dentistry.blackwellmunksgaard.com/cpe.

We recommend the use of a tool such as EndNote or Reference Manager for reference management and formatting. EndNote reference styles can be searched for here: <http://www.endnote.com/support/enstyles.asp>. Reference Manager reference styles can be searched for here: <http://www.refman.com/support/rmstyles.asp>

Tables, Figures and Figure Legends: Tables, figures and figure legends should be included as appropriate. Please see the Journal webpage www.dentistry.blackwellmunksgaard.com/cpe and Blackwell Publishing's guidelines for illustrations: <http://authorservices.wiley.com/bauthor/illustration.asp>.

Supplementary Material: Supplementary material, such as data sets or additional figures or tables that will not be published in the print edition of the Journal but which will be viewable in the online edition, can be uploaded as: Supporting information for review and online publication only. Please see <http://authorservices.wiley.com/bauthor/suppmat.asp> for further information on the submission of Supplementary Materials.

ACCEPTANCE OF A MANUSCRIPT FOR PUBLICATION

Copyright: Authors submitting a paper do so on the understanding that the work has not been published before, is not being considered for publication elsewhere and has been read and approved by all authors. A completed Copyright Transfer Agreement (CTA) must be received before any manuscript can be published. If your paper is accepted, the author identified as the formal corresponding author for the paper will receive an email prompting them to login into Author Services; where via the Wiley Author Licensing Service (WALS) they will be able to complete the license agreement on behalf of all authors on the paper.

Proofs: The corresponding author will receive an e-mail alert containing a link to download their proof as a PDF (portable document format). Corrections must be returned to the Production Editor (jcpe@wiley.com) within 3 days of receipt.

Offprints: Free access to the final PDF offprint of an article will be available via author services only. Therefore, authors must sign up for author services if they would like to access their article PDF offprint and enjoy the many other benefits the service offers. Additional paper offprints may be ordered online clicking on the following link: www.sheridan.com/wiley/eoc

ONLINEOPEN

Journal of Clinical Periodontology accepts articles for Open Access publication. Please visit <http://olabout.wiley.com/WileyCDA/Section/id-406241.html> for further information about OnlineOpen.

Contents

Biological factors involved in alveolar bone regeneration	6	W. V. Giannobile, T. Berglundh, B. Al-Nawas, M. Araujo, P. M. Bartold, P. Bouchard, I. Chapple, R. Gruber, P. Lundberg, A. Sculean, N. P. Lang, P. Lyngstadaas, M. Kebschull, P. Galindo-Moreno, Z. Schwartz, L. Shapira, A. Stavropoulos and J. Reseland
Mesenchymal stem cells and biologic factors leading to bone formation	12	M. Bartold, S. Gronthos, D. Haynes and S. Ivanovski
The critical interplay between bone resorbing and bone forming cells	33	U. H. Lerner, E. Kindstedt and P. Lundberg
Osteoimmunology: Inflammatory osteolysis and regeneration of the alveolar bone	52	R. Gruber
Self-regenerative capacity of intra-oral bone defects	70	A. Sculean, A. Stavropoulos and D. D. Bosshardt
Biomaterials and regenerative technologies used in bone regeneration in the craniomaxillofacial region: Consensus report of group 2 of the 15th European Workshop on Periodontology on Bone Regeneration	82	M. Sanz, C. Dahlin, D. Apatzidou, Z. Artzi, D. Bozic, E. Calciolari, H. De Bruyn, H. Dommisch, N. Donos, P. Eickholz, J. E. Ellingsen, H. J. Haugen, D. Herrera, F. Lambert, P. Layrolle, E. Montero, K. Mustafa, O. Omar and H. Schliephake
Bone grafts: which is the ideal biomaterial?	92	H. J. Haugen, S. P. Lyngstadaas, F. Rossi and G. Perale
Barrier membranes: More than the barrier effect?	103	O. Omar, I. Elgali, C. Dahlin and P. Thomsen
The use of bioactive factors to enhance bone regeneration: A narrative review	124	N. Donos, X. Dereka and E. Calciolari
Cell therapy for orofacial bone regeneration: A systematic review and meta-analysis	162	S. Shanbhag, S. Suliman, N. Pandis, A. Stavropoulos, M. Sanz and K. Mustafa
Management of the extraction socket and timing of implant placement: Consensus report and clinical recommendations of group 3 of the XV European Workshop in Periodontology	183	M. S. Tonetti, R. E. Jung, G. Avila-Ortiz, J. Blanco, J. Cosyn, S. Fickl, E. Figuero, M. Goldstein, F. Graziani, P. Madianos, A. Molina, J. Nart, G. E. Salvi, I. Sanz-Martin, D. Thoma, N. Van Assche and F. Vignoletti
Effect of alveolar ridge preservation interventions following tooth extraction: A systematic review and meta-analysis	195	G. Avila-Ortiz, L. Chambrone and F. Vignoletti
The effectiveness of immediate implant placement for single tooth replacement compared to delayed implant placement: A systematic review and meta-analysis	224	J. Cosyn, L. De Lat, L. Seyssens, R. Doornewaard, E. Deschepper and S. Vervaeke
Effectiveness and clinical performance of early implant placement for the replacement of single teeth in anterior areas: A systematic review	242	F. Graziani, V. Chappuis, A. Molina, R. Lazarin, E. Schmid, S. Chen and G. E. Salvi
Efficacy of lateral bone augmentation performed simultaneously with dental implant placement: A systematic review and meta-analysis	257	D. S. Thoma, S. P. Bienz, E. Figuero, R. E. Jung and I. Sanz-Martin
Regeneration of alveolar ridge defects. Consensus report of group 4 of the 15th European Workshop on Periodontology on Bone Regeneration	277	S. Jepsen, F. Schwarz, L. Cordaro, J. Derks, C. H. F. Hämmerle, L. J. Heitz-Mayfield, F. Hernández-Alfaro, H. J. A. Meijer, N. Naenni, A. Ortiz-Vigón, B. Pjetursson, G. M. Raghoebar, S. Renvert, I. Rocchietta, M. Rocuzzo, I. Sanz-Sánchez, M. Simion, C. Tomasi, L. Trombelli and I. Urban

Efficacy of lateral bone augmentation prior to implant placement: A systematic review and meta-analysis	287	<i>N. Naenni, H.-C. Lim, S. N. Papageorgiou and C. H. F. Hämmerle</i>
Long-term effectiveness of maxillary sinus floor augmentation: A systematic review and meta-analysis	307	<i>G. M. Raghoobar, P. Onclin, G. C. Boven, A. Vissink and H. J. A. Meijer</i>
Effectiveness of vertical ridge augmentation interventions: A systematic review and meta-analysis	319	<i>I. A. Urban, E. Montero, A. Monje and I. Sanz-Sánchez</i>
Efficacy of reconstructive surgical therapy at peri-implantitis-related bone defects. A systematic review and meta-analysis	340	<i>C. Tomasi, E. Regidor, A. Ortiz-Vigón and J. Derks</i>

This journal is available online. Visit wileyonlinelibrary.com/journal/jcpe to search the articles and register for table of contents e-mail alerts.

This journal is abstracted or indexed in: Abstracts on Hygiene and Communicable Diseases, Botanical Pesticides Abstracts, CAB Abstracts, Chemical Abstracts, Chemical Industry Notes, Cinahl: Cumulative Index to Nursing & Allied Health Literature, Current Abstracts, Current Contents, Current Titles in Dentistry, Dental Abstracts, Excerpta Medica, Abstract Journals, Forestry Abstracts, Global Health, Horticultural Science Abstracts, Index Medicus, Index to Dental Literature, Index to Scientific Reviews, Index Veterinarius, MEDLINE, Nutrition Abstracts and Reviews, Review of Aromatic and Medicinal Plants, Review of Medical and Veterinary Mycology, Rural Development Abstracts, Science Citation Index, SciSearch, SCOPUS, Soybean Abstracts, Tropical Diseases Bulletin, Veterinary Bulletin, Veterinary Science Database

Printed in Singapore