



Supplement of

Atmospheric lifetime of sulphur hexafluoride (SF₆) and five other trace gases in the BASCOE model driven by three reanalyses

Sarah Vervalcke et al.

Correspondence to: Sarah Vervalcke (sarah.vervalcke@aeronomie.be) and Quentin Errera (quentin.errera@aeronomie.be)

The copyright of individual parts of the supplement might differ from the article licence.

5 Evaluation of trace gas profiles

Figures S1-S6 show the normalized mean difference, the standard deviation and the correlation of the six long-lived species simulated with the BASCOE CTM compared to MIPAS and ACE-FTS observations. The next series of figures (S7-S16) show the normalised mean difference and the normalized standard deviation of BASCOE model output with respect to MIPAS and ACE-FTS observations.

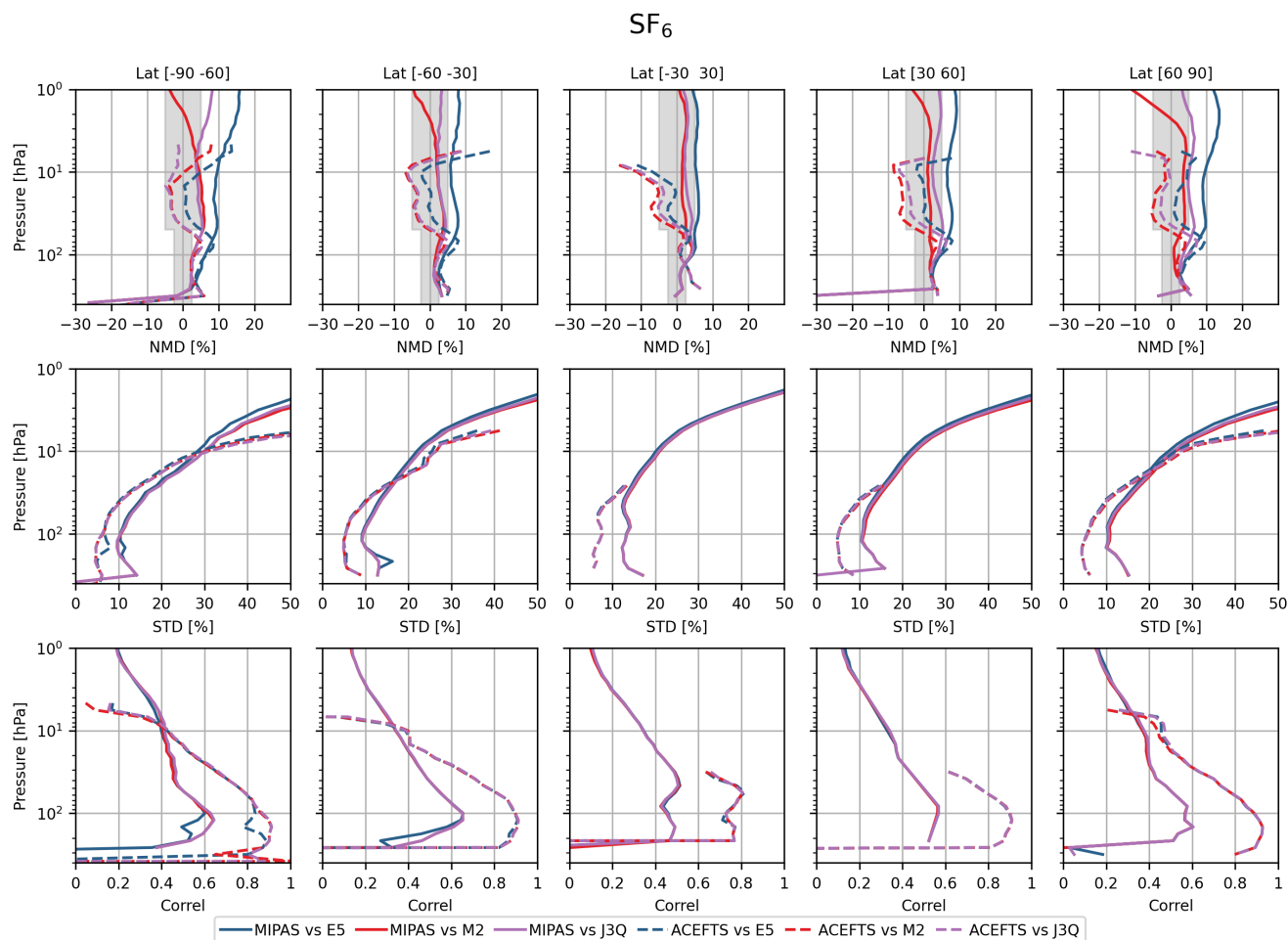


Figure S1. SF₆ statistics with respect to MIPAS and ACE-FTS

N₂O

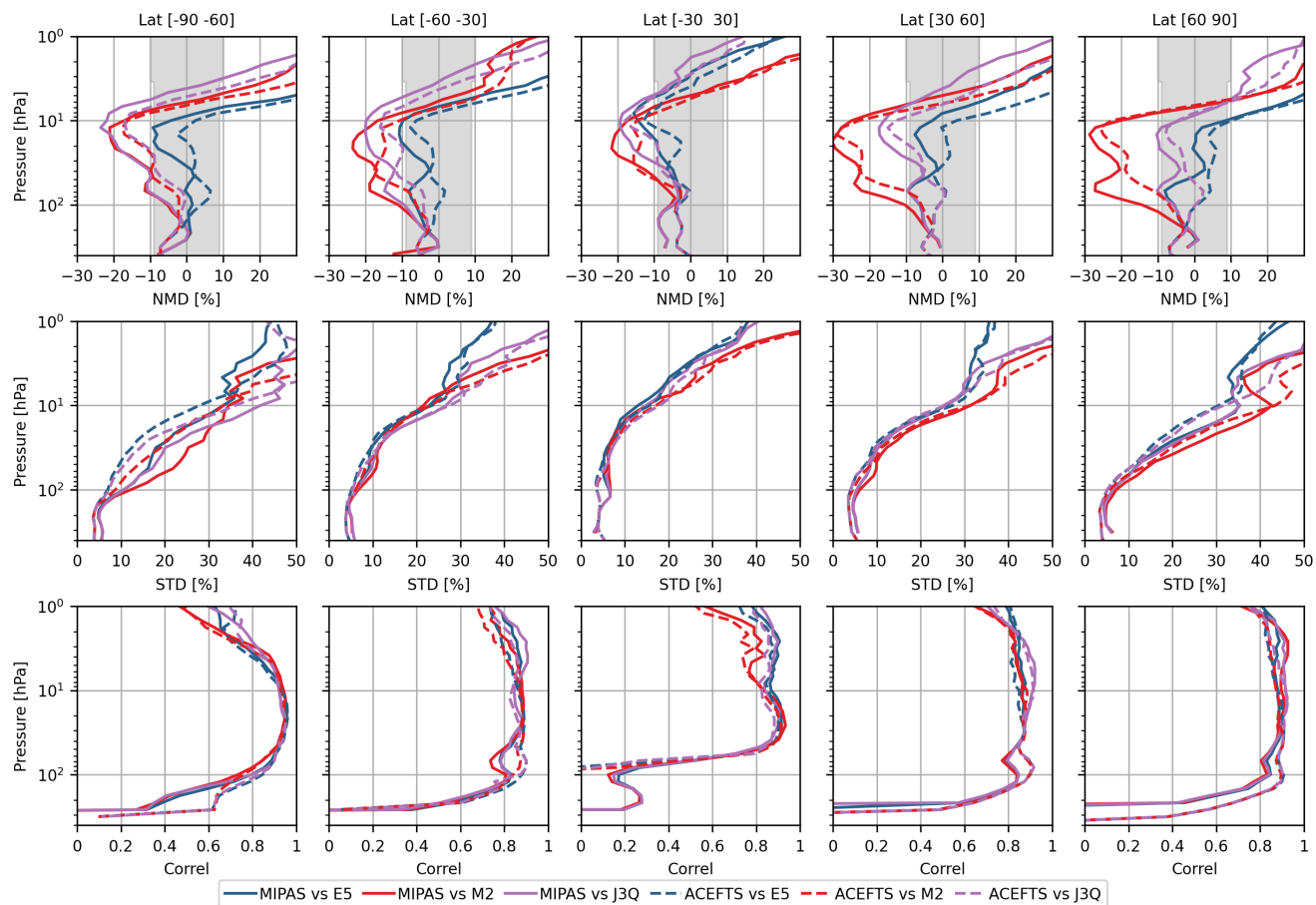


Figure S2. N₂O statistics with respect to MIPAS and ACE-FTS

CFC-11

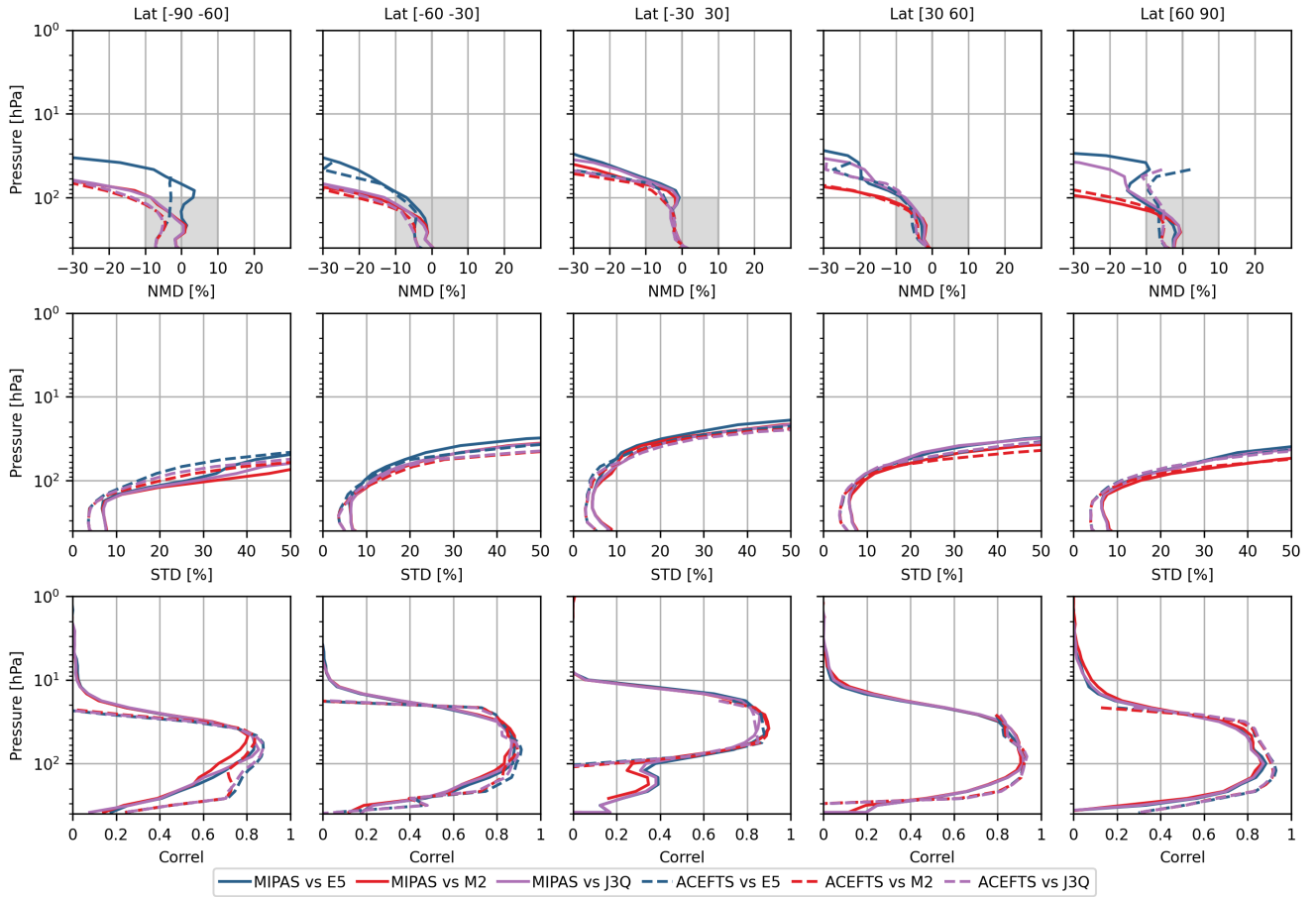


Figure S3. CFC-11 statistics with respect to MIPAS and ACE-FTS

CFC-12

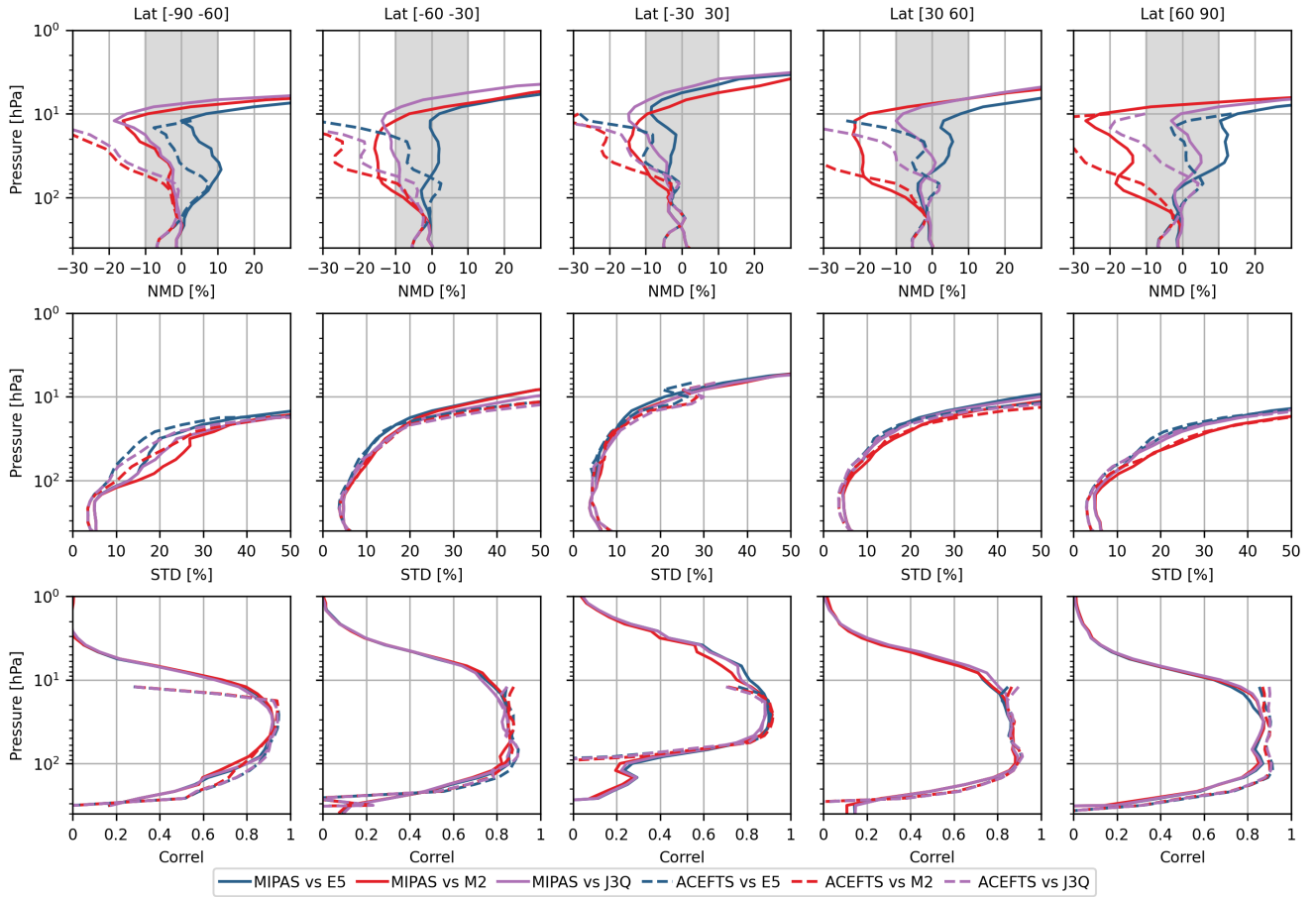


Figure S4. CFC-12 statistics with respect to MIPAS and ACE-FTS

CH₄

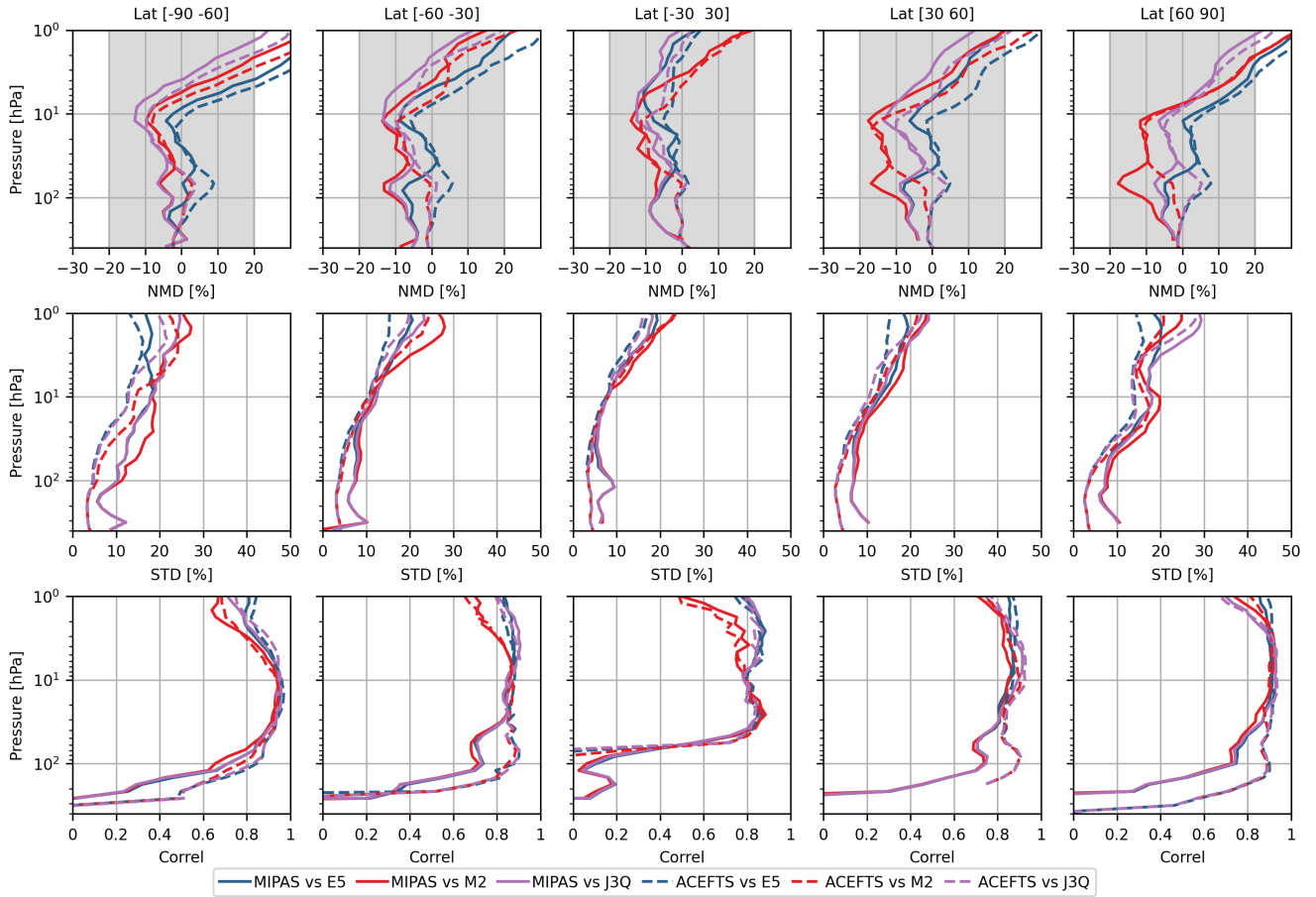


Figure S5. CH₄ statistics with respect to MIPAS and ACE-FTS

HCFC-22

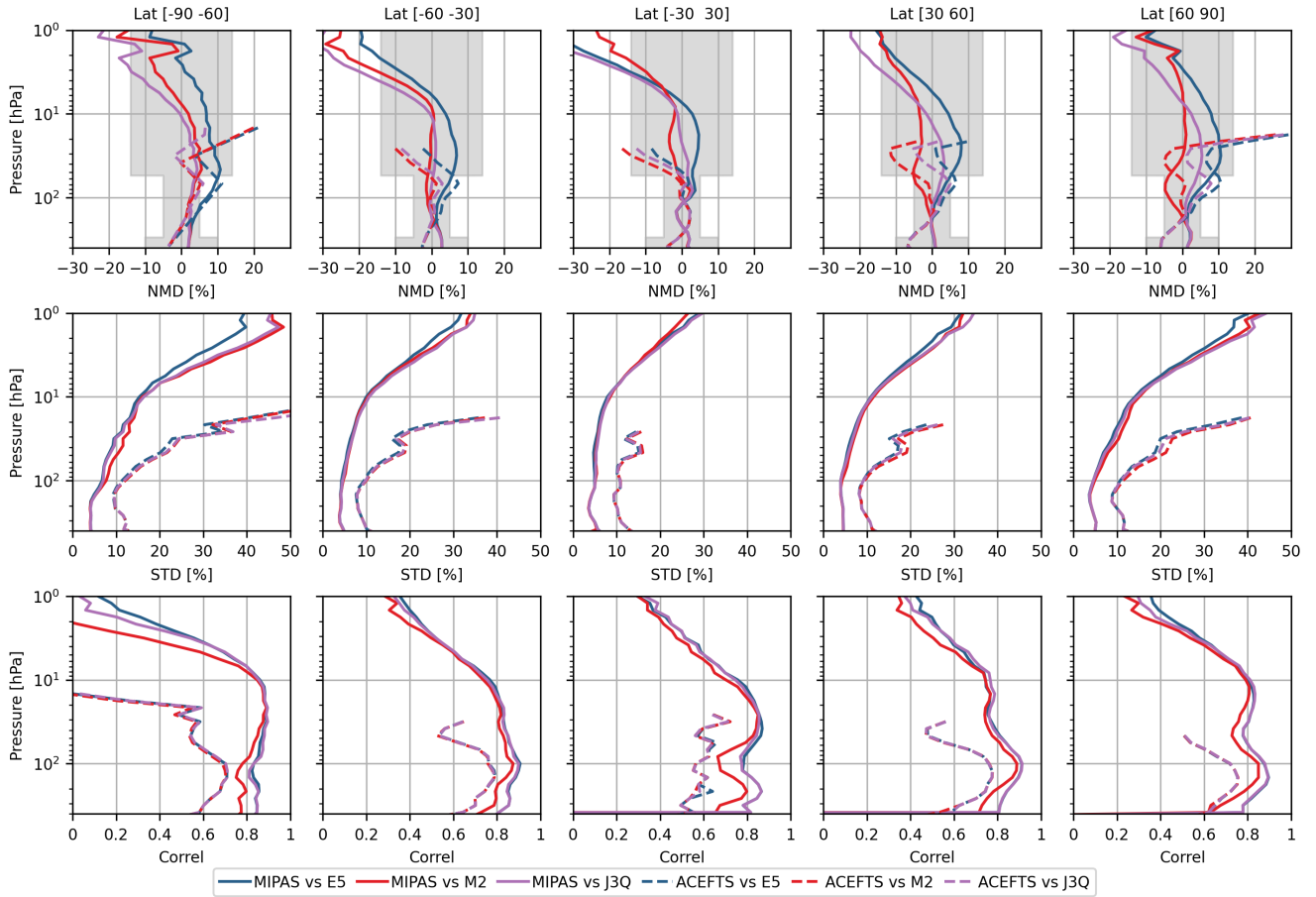


Figure S6. HCFC-22 statistics with respect to MIPAS and ACE-FTS

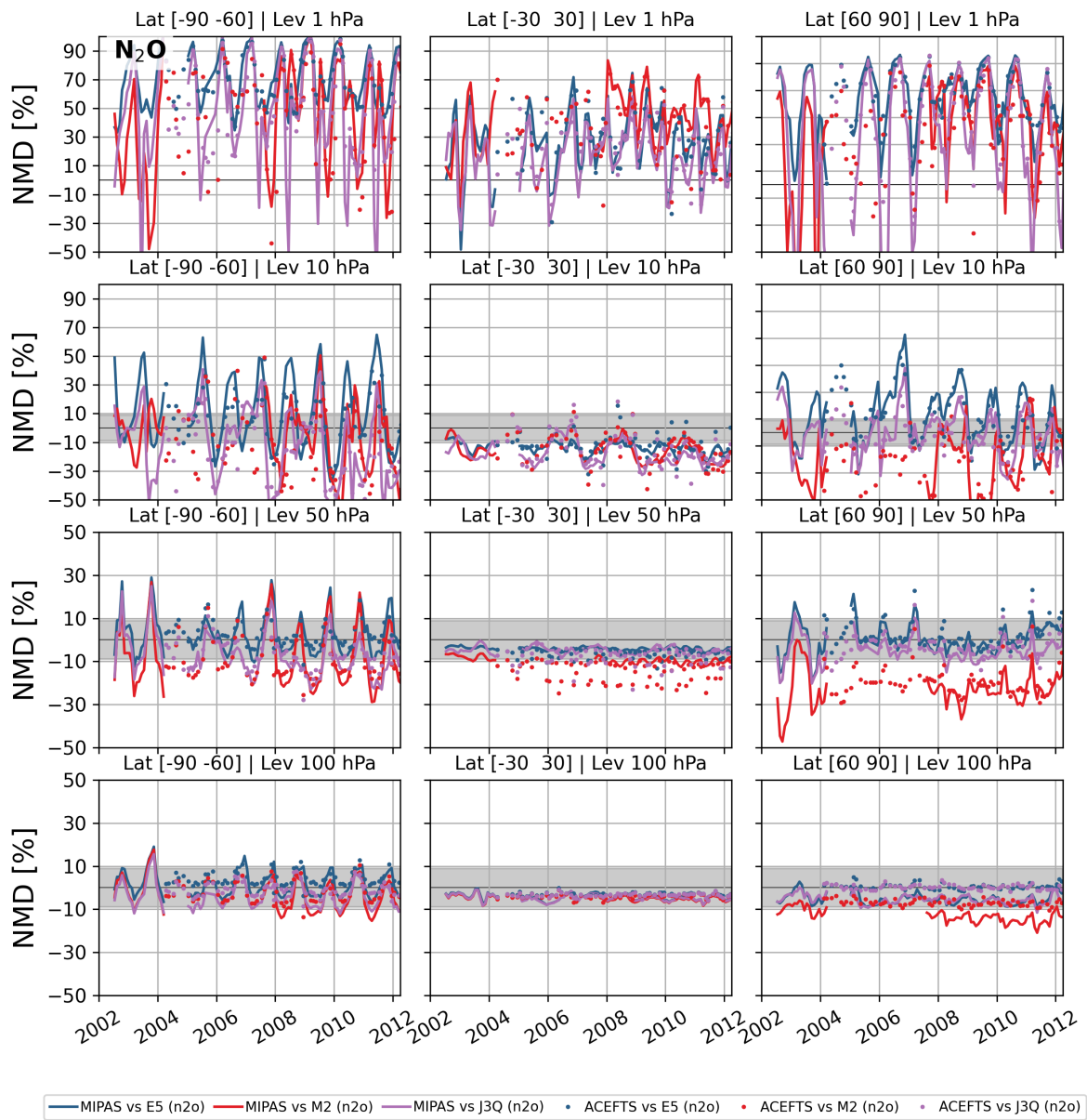


Figure S7. Normalised mean difference of BASCOE N_2O with respect to MIPAS and ACE-FTS.

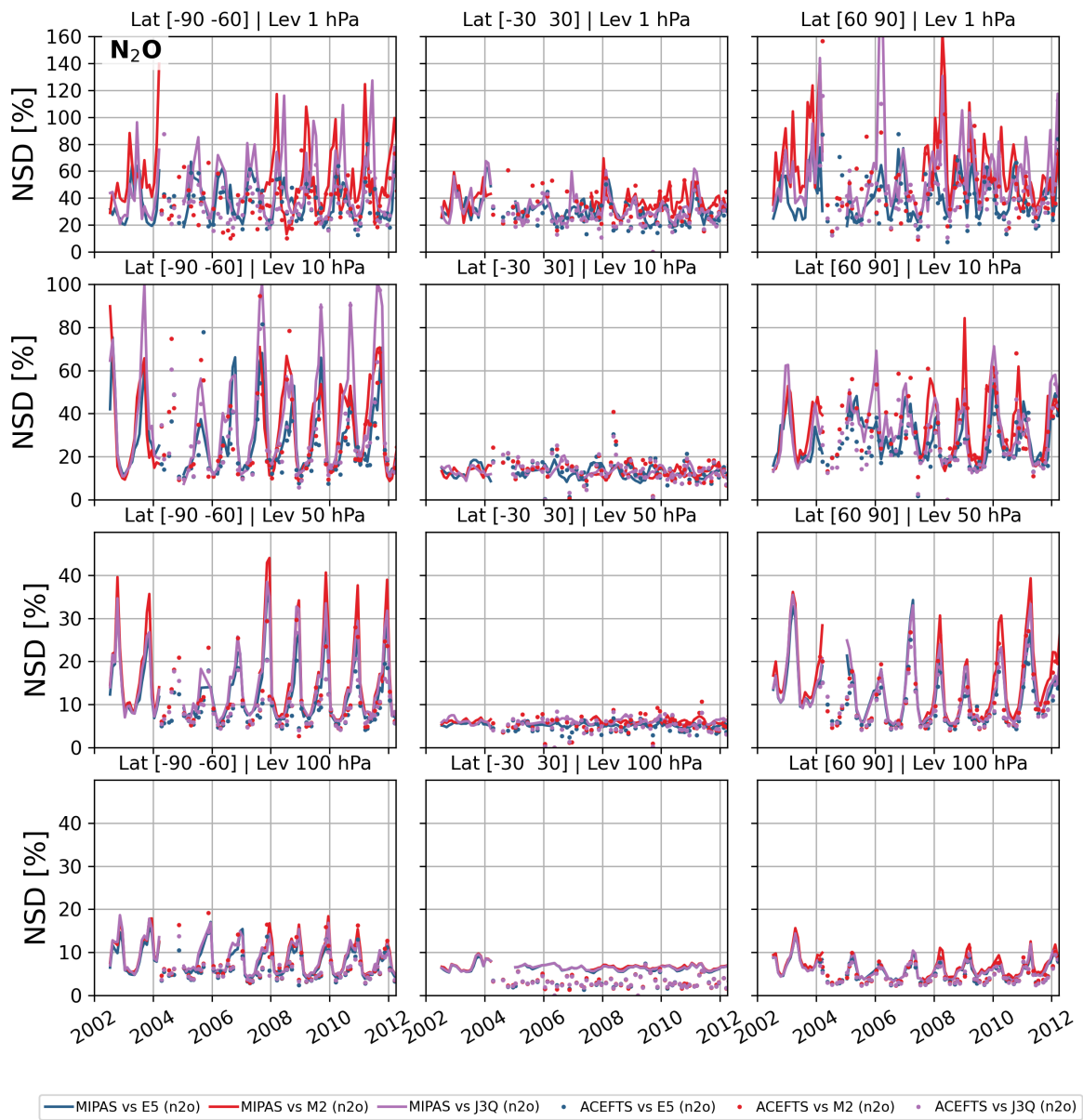


Figure S8. Normalised standard deviation of BASCOE N_2O with respect to MIPAS and ACE-FTS.

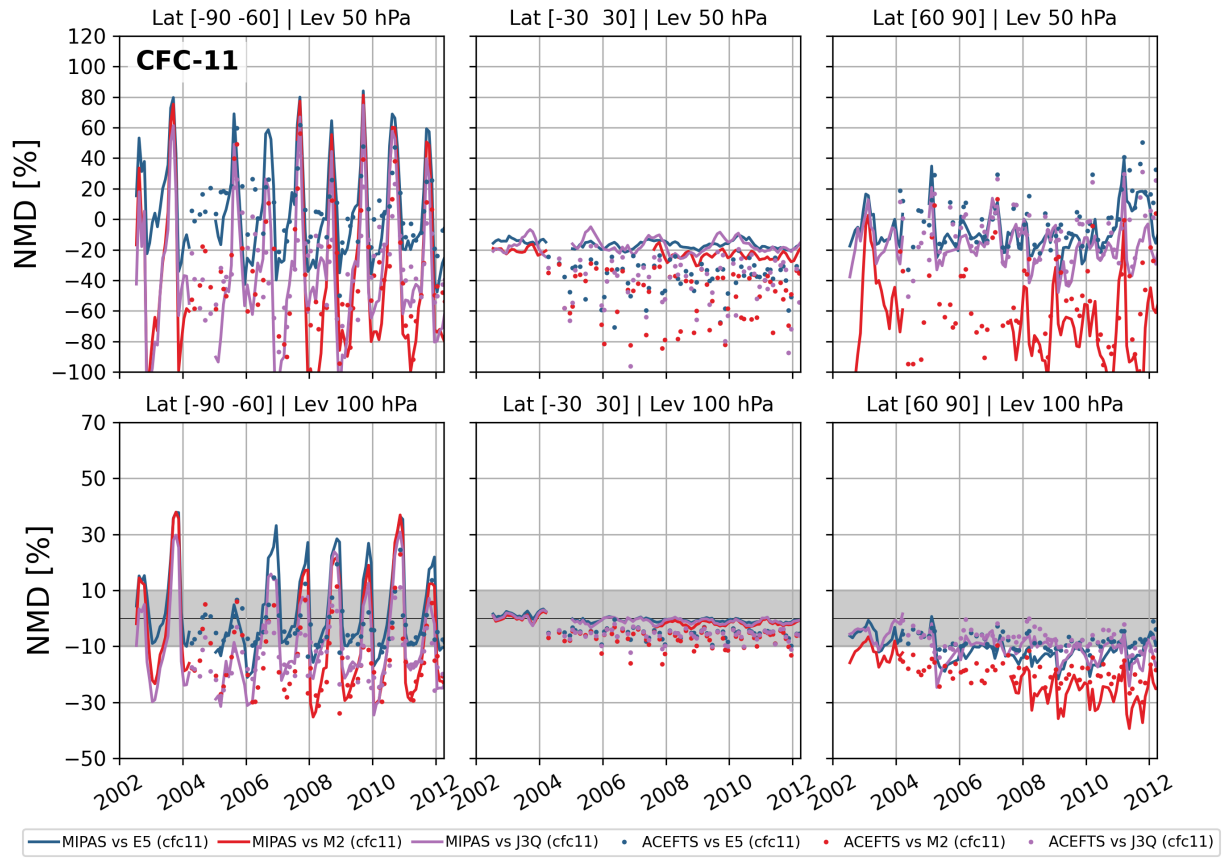


Figure S9. Normalised mean difference of BASCOE CFC-11 with respect to MIPAS and ACE-FTS.

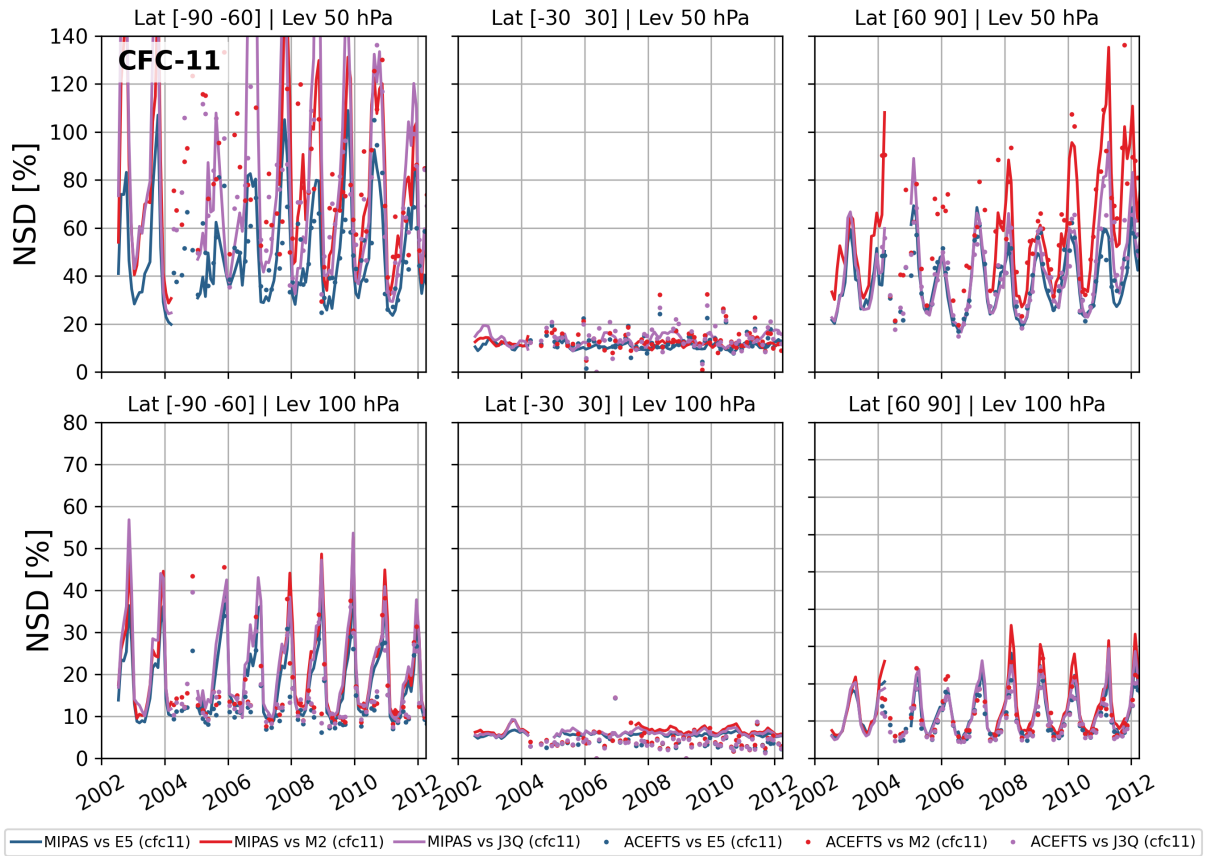


Figure S10. Normalised standard deviation of BASCOE CFC-11 with respect to MIPAS and ACE-FTS.

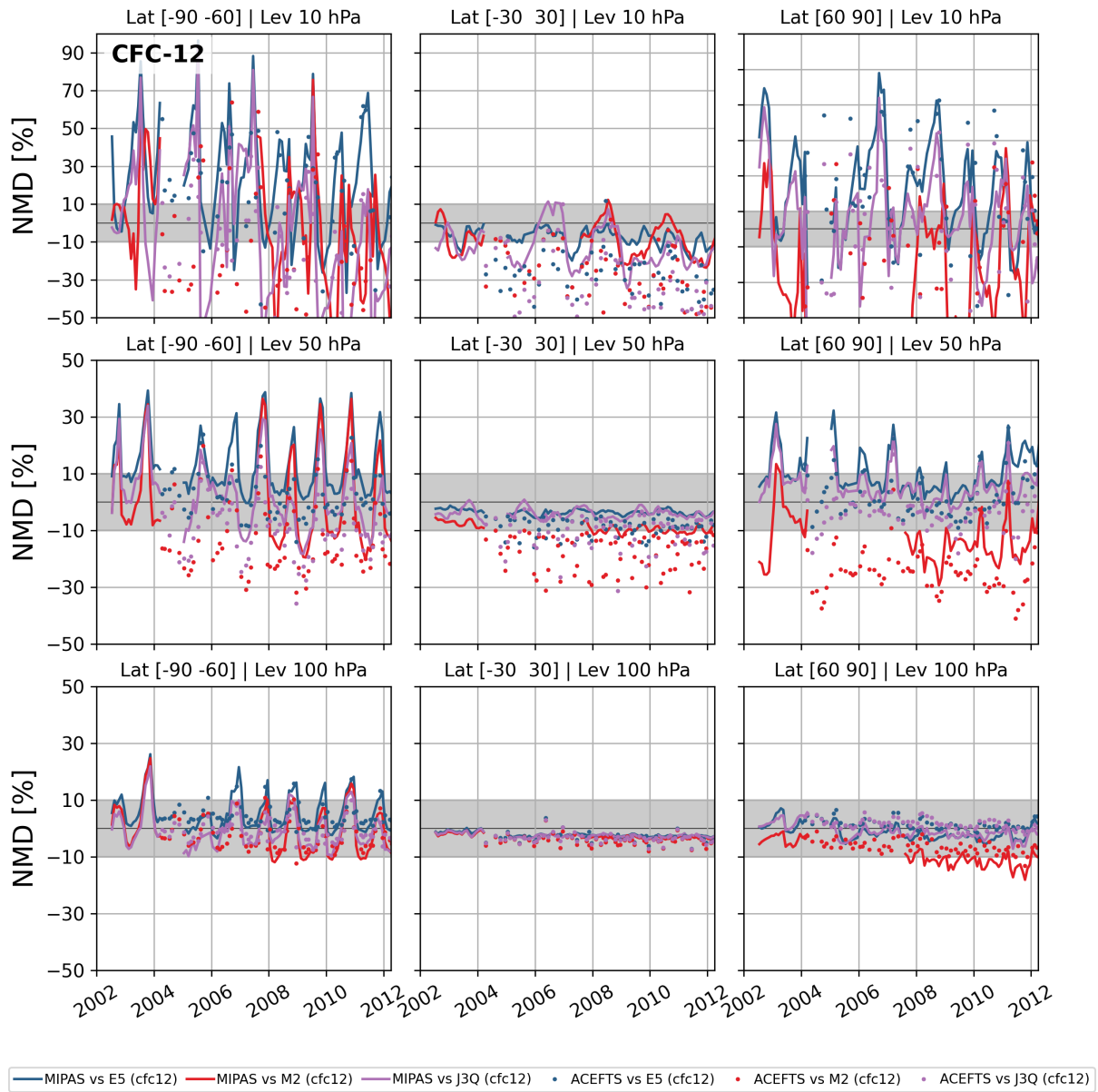


Figure S11. Normalised mean difference of BASCOE CFC-12 with respect to MIPAS and ACE-FTS.

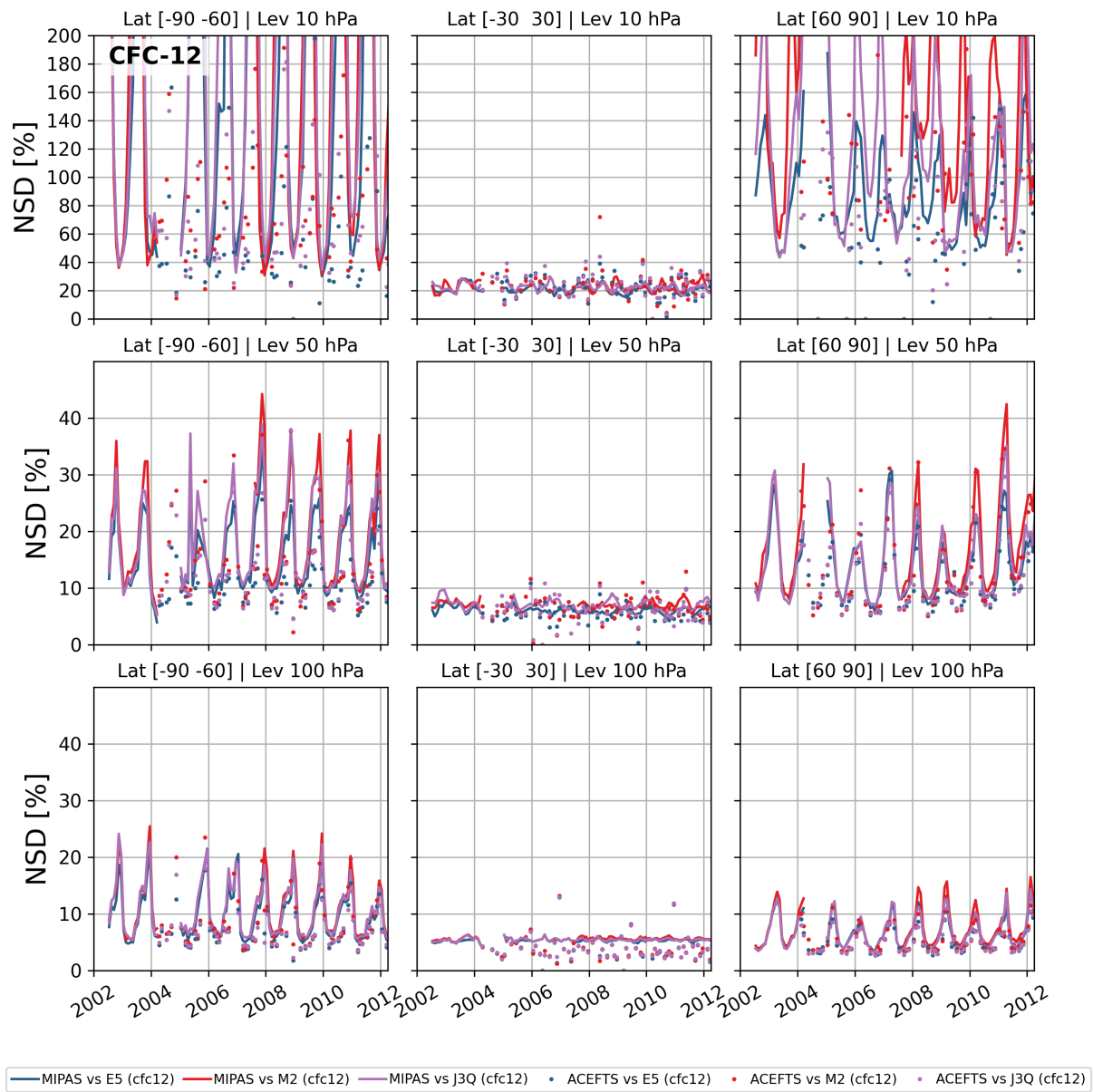


Figure S12. Normalised standard deviation of BASCOE CFC-12 with respect to MIPAS and ACE-FTS.

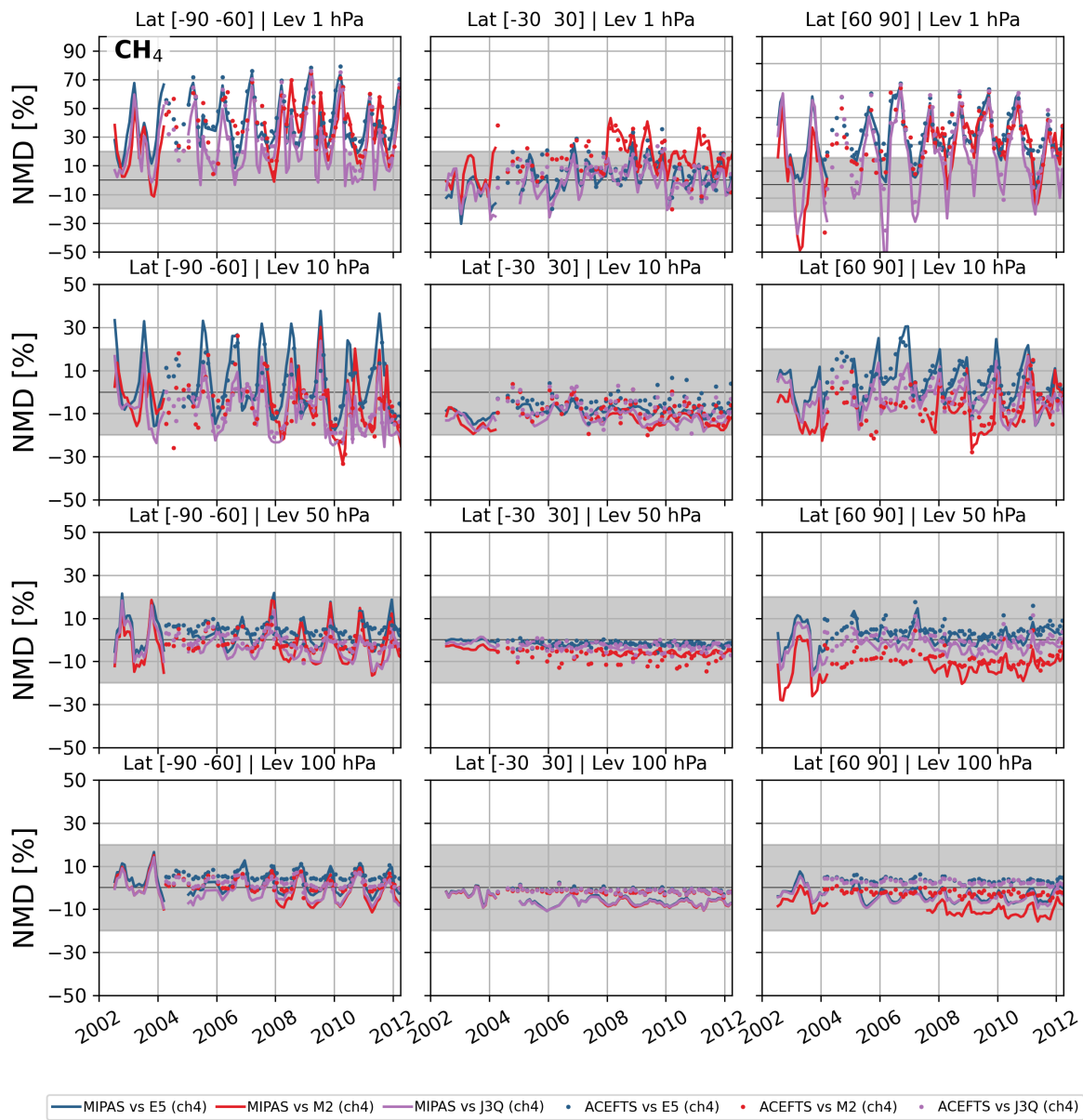


Figure S13. Normalised mean difference of BASCOE CH₄ with respect to MIPAS and ACE-FTS.

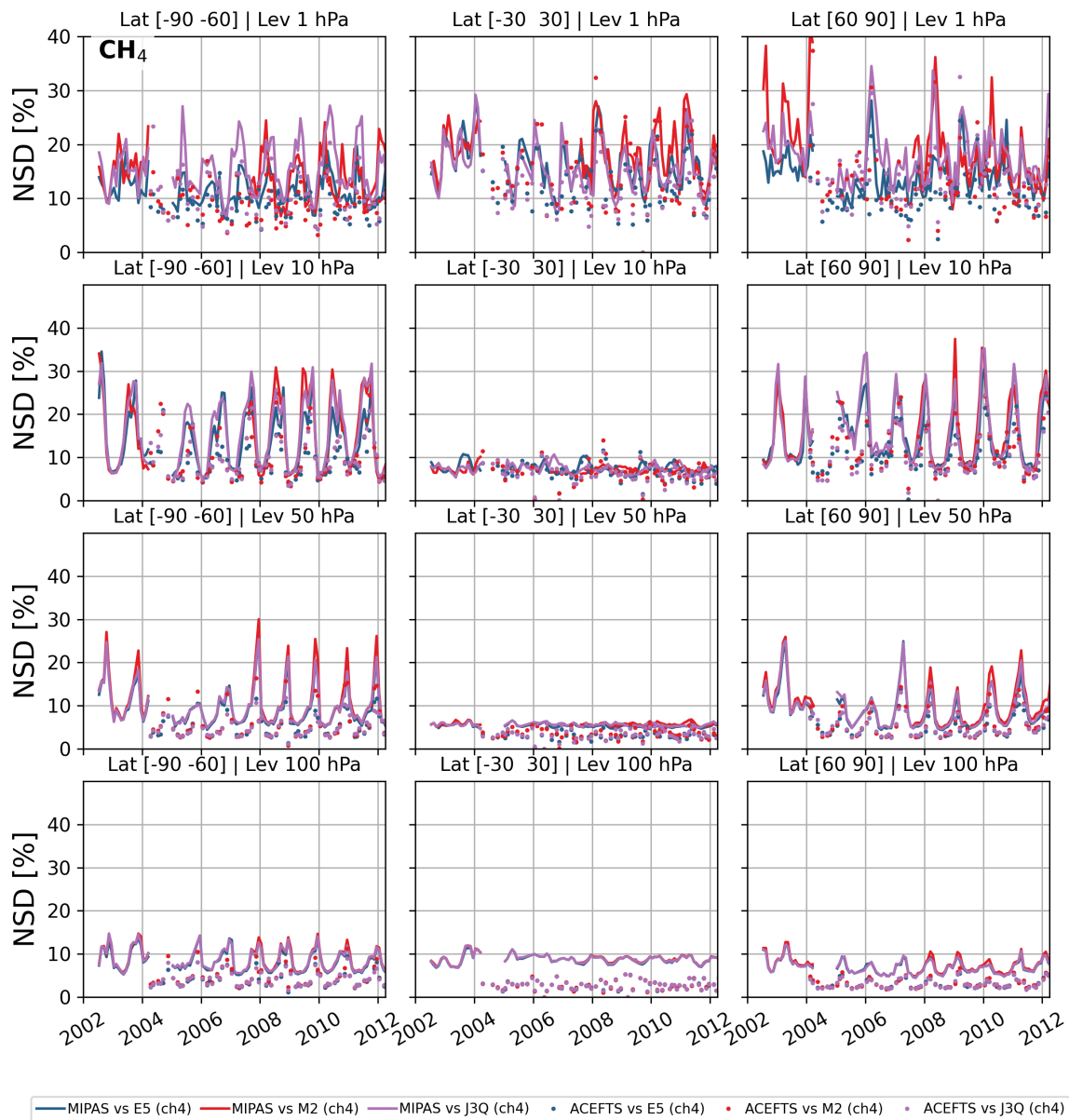


Figure S14. Normalised standard deviation of BASCOE CH₄ with respect to MIPAS and ACE-FTS.

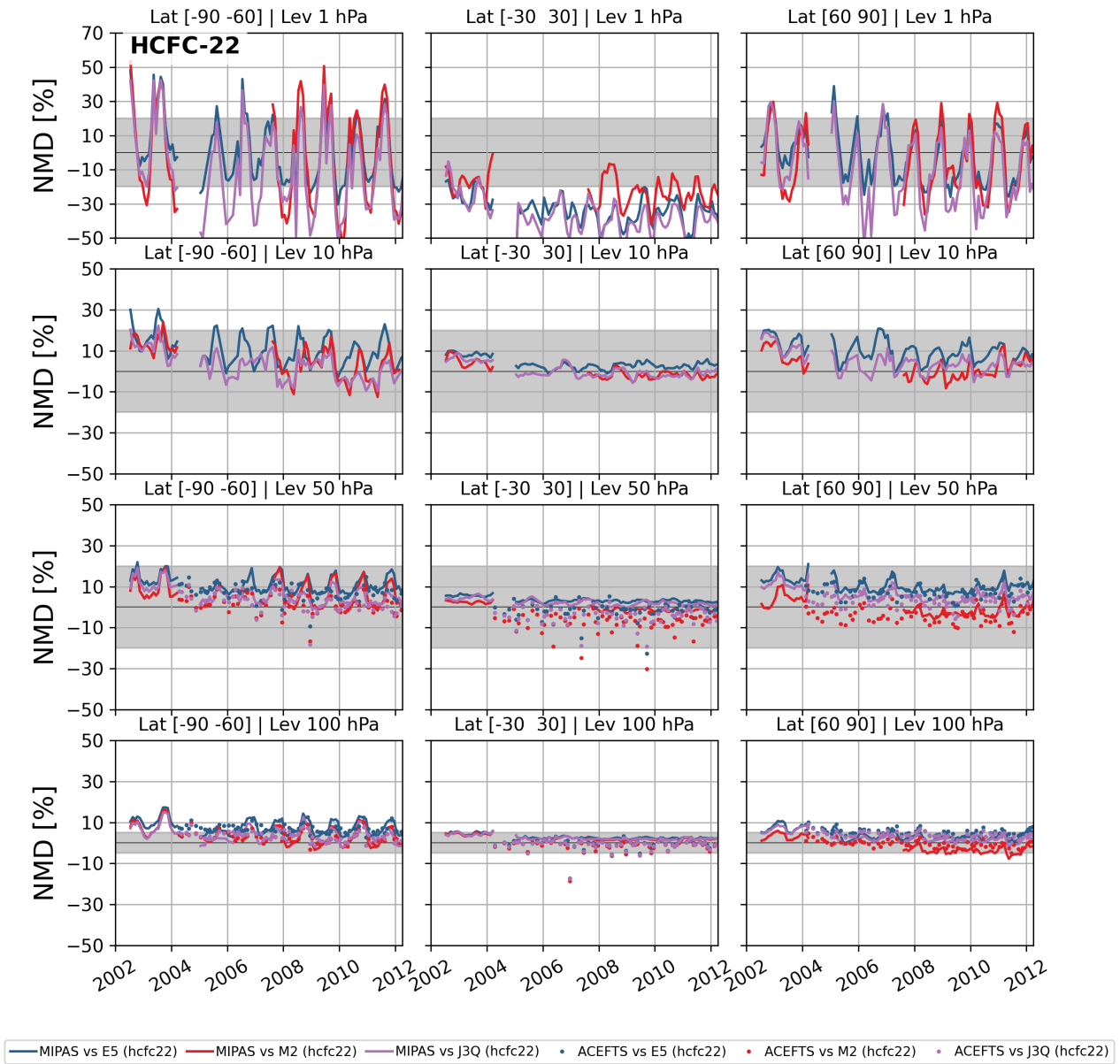


Figure S15. Normalised mean difference of BASCOE HCFC-22 with respect to MIPAS and ACE-FTS.

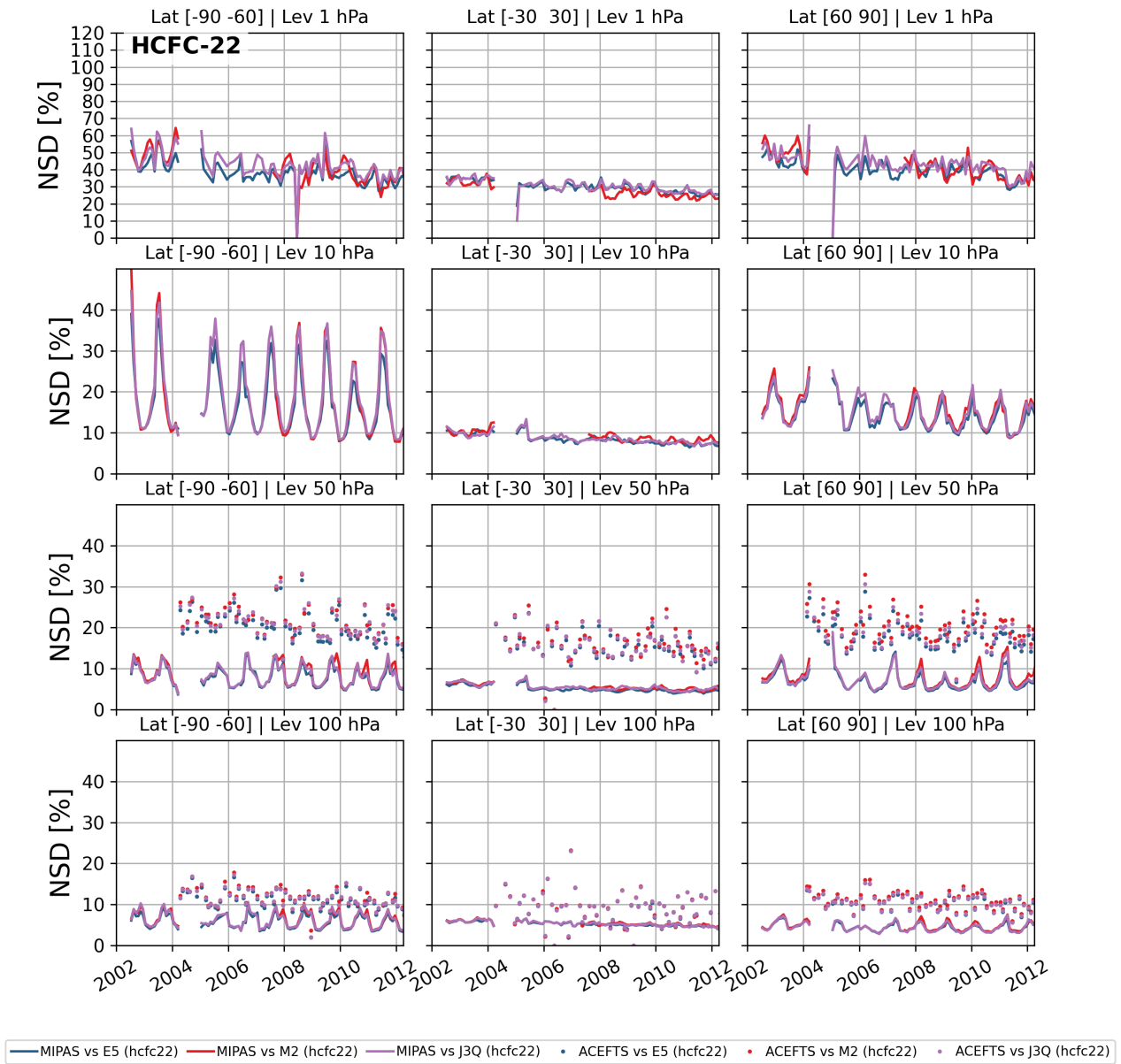


Figure S16. Normalised standard deviation of BASCOE HCFC-22 with respect to MIPAS and ACE-FTS.