

Back to the Dataverse

The ULIège Dataverse



The ULIège Dataverse is the ULIège institutional **open data repository**.

Any ULIège researcher can publish openly their Dataset

The screenshot displays the ULIège Dataverse website interface. At the top, the 'Dataverse' logo is on the left, and navigation links for 'Search', 'User Guide', 'Support', and 'Log In' are on the right. Below the navigation is the ULIège université logo and the text 'ULIège Open Data Repository' and 'ULIège Guide & Terms of Use'. A search bar is present with the placeholder text 'Search this dataverse...' and a search button. Below the search bar, there are filters for 'Dataverses (1)', 'Datasets (37)', and 'Files (12 759)'. The 'Dataverse Category' is 'Research Group (1)'. The 'Publication Year' filter shows '2025 (16)', '2024 (12)', and '2023 (10)'. The 'Author Name' filter lists 'Ghosez, Philippe (5)', 'Bastogne, Louis (4)', 'Fantoli, Margherita (3)', and 'Gómez-Ortiz, Fernando (3)'. The main content area shows '1 to 10 of 38 Results' and a 'Sort' dropdown. Two search results are visible: 'CaTiO3 Second-Principles Interatomic Potential' (5 nov. 2025) and 'Structural parameters for the article "Pathways to crystal chirality An algorithm to identify new displacive chiral phase transitions"' (3 oct. 2025).

How it works



You need an **ORCID**

On the ULIège Dataverse:

Username

u*****

Email

*****@uliege.be**

[How to create your account procedure](#)

How it works



You need an **ORCID**

On the ULiège Dataverse:

Username

u*****

Email

*****@uliege.be**

[How to create your account procedure](#)

Documentation

Clear file naming convention

Open file format

Ethics & legal issues

Data quality

...

[How to prepare your dataset checklist & info](#)

How it works



You need an **ORCID**

On the ULiège Dataverse:

Username

u*****

Email

***@uliege.be

[How to create your account procedure](#)

Documentation

Clear file naming convention

Open file format

Ethics & legal issues

Data quality

...

[How to prepare your dataset checklist & info](#)

Create a dataset

Add metadata

Upload files

Enrich metadata

Submit your dataset

[Submit your dataset procedure](#)

NB : If your Dataset > **2000 files** and/or 1 file > **100 GB** and/or Dataset > **500 GB**, contact dataverse.admin@uliege.be beforehand !

How it works



You need an **ORCID**

On the ULiège Dataverse:

Username

u*****

Email

***@uliege.be

[How to create your account procedure](#)



Documentation
Clear file naming convention
Open file format
Ethics & legal issues
Data quality
...

[How to prepare your dataset checklist & info](#)



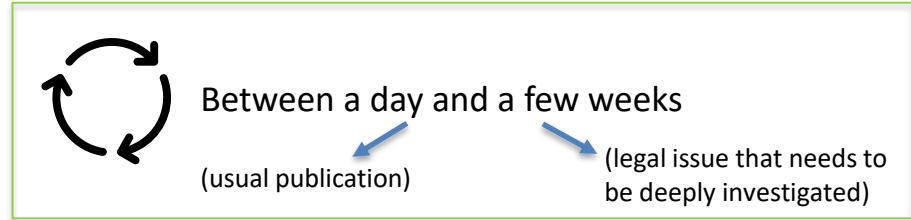
Create a dataset
Add metadata
Upload files
Enrich metadata
Submit your dataset

[Submit your dataset procedure](#)



NB : If your Dataset > **2000 files** and/or 1 file > **100 GB** and/or Dataset > **500 GB**, contact dataverse.admin@uliege.be beforehand !

How it works



You need an **ORCID**

On the ULiège Dataverse:

Username
u*****

Email
***@uliege.be

[How to create your account procedure](#)

Documentation
 Clear file naming convention
 Open file format
 Ethics & legal issues
 Data quality
 ...

[How to prepare your dataset checklist & info](#)

Create a dataset
 Add metadata
 Upload files
 Enrich metadata
 Submit your dataset

[Submit your dataset procedure](#)

NB : If your Dataset > **2000 files** and/or 1 file > **100 GB** and/or Dataset > **500 GB**, contact dataverse.admin@uliege.be beforehand !

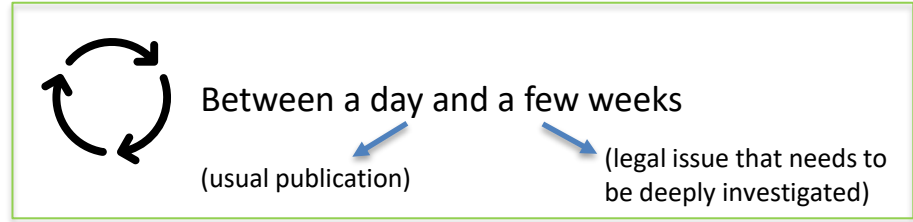
That's my job !

Review within 5 working days (generally)

Metadata enrichment suggestions
 Documentation issue spotting
 Legal & ethical check
 ...

→ **Major and/or minor comments**

How it works



You need an **ORCID**

On the ULiège Dataverse:

Username

u*****

Email

***@uliege.be

[How to create your account procedure](#)

- Documentation
- Clear file naming convention
- Open file format
- Ethics & legal issues
- Data quality
- ...

[How to prepare your dataset checklist & info](#)

- Create a dataset
- Add metadata
- Upload files
- Enrich metadata
- Submit your dataset

[Submit your dataset procedure](#)

NB : If your Dataset > **2000 files** and/or 1 file > **100 GB** and/or Dataset > **500 GB**, contact dataverse.admin@uliege.be beforehand !

That's my job !

Review within 5 working days (generally)

- Metadata enrichment suggestions
- Documentation issue spotting
- Legal & ethical check
- ...

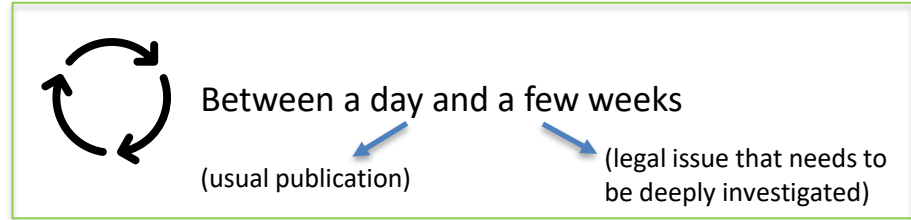
→ **Major and/or minor comments**

If dataset submitted by temporary staff, supervisor approval requested

Once **published**, your dataset is available on: <https://dataverse.uliege.be/>

But also visible on: data.gov.be, data.europa.eu, [OpenAIRE](https://openaire.eu), [EOSC|EUNode](https://eunode.eu)

How it works



You need an **ORCID**

On the ULiège Dataverse:

Username

u*****

Email

***@uliege.be

[How to create your account procedure](#)

- Documentation
- Clear file naming convention
- Open file format
- Ethics & legal issues
- Data quality
- ...

[How to prepare your dataset checklist & info](#)

- Create a dataset
- Add metadata
- Upload files
- Enrich metadata
- Submit your dataset

[Submit your dataset procedure](#)

NB : If your Dataset > **2000 files** and/or 1 file > **100 GB** and/or Dataset > **500 GB**, contact dataverse.admin@uliege.be beforehand !

That's my job !

Review within 5 working days (generally)

- Metadata enrichment suggestions
- Documentation issue spotting
- Legal & ethical check
- ...

→ **Major and/or minor comments**

If dataset submitted by temporary staff, supervisor approval requested

Once **published**, your dataset is available on: <https://dataverse.uliege.be/>

But also visible on: data.gov.be, data.europa.eu, [OpenAIRE](https://openaire.eu), [EOSC|EUNode](https://eosc-eunode.eu)



Can I publish data subject to GDPR ?

Yes but

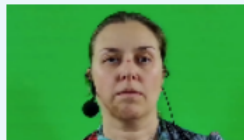
1. Consent forms analyzed by DPO (Data Protection Officer)
2. Publish in restricted access only
3. Procedure to follow when someone request access
4. Template license customized by DPO & jurist for each request



[ULiège Open Data Repository](#) >

EVE: Emotional Validated Expressions, an acted audiovisual corpus

Version 1.2



Etienne, Elodie; Remacle, Angélique; Leclercq, Anne-Lise; Schyns, Michaël, 2025, "EVE: Emotional Validated Expressions, an acted audiovisual corpus", <https://doi.org/10.58119/ULG/VREIOB>, ULiège Open Data Repository, V1

[Cite Dataset](#) ▾

[Learn about Data Citation Standards.](#)

[Access Dataset](#) ▾

[Contact Owner](#)

[Share](#)

[Dataset Metrics](#) ?

1 to 8 of 8 Files

[Download](#)

[Request Access](#)



[EVE_EN_mp4.7z](#)

Compressed Archive - 3.1 GB

Published 8 août 2025

0 Downloads



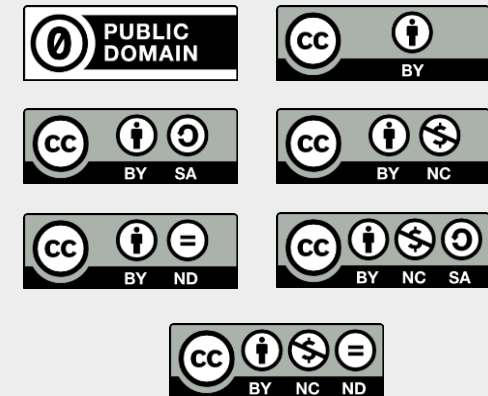
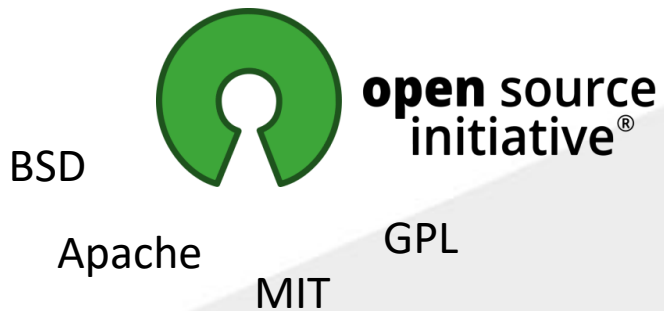
Audiovisual corpus (MP4 files) for English.



I have code with my data; can I publish it alongside on Dataverse ?

Yes but

1. Be mindful of the Open Source licenses for the code (≠ data licenses)



I have code with my data; can I publish it alongside on Dataverse ?

Yes but

1. Be mindful of the Open Source licenses for the code (≠ data licenses)
2. If your code is available on GitHub and archived (e.g. on Software Heritage) maybe you can just refer to it with a permanent identifier (PID, like the SWHID)
3. Follow the software best practices (Documentation, README.md, CITATION.cff, LICENSE, ...)
4. Tag data and code files differently to have a clear custom license on Dataverse



The ULIège Dataverse



The ULIège Dataverse is the ULIège institutional **open data repository**.

Any ULIège researcher can publish openly their Dataset

The screenshot displays the ULIège Dataverse website interface. At the top, the 'Dataverse' logo is on the left, and navigation links for 'Search', 'User Guide', 'Support', and 'Log In' are on the right. Below the navigation is the ULIège université logo and the text 'ULIège Open Data Repository' and 'ULIège Guide & Terms of Use'. A search bar is present with the placeholder text 'Search this dataverse...' and a search button. Below the search bar, there are filters for 'Dataverses (1)', 'Datasets (37)', and 'Files (12 759)'. The 'Dataverse Category' is 'Research Group (1)'. The 'Publication Year' filter shows '2025 (16)', '2024 (12)', and '2023 (10)'. The 'Author Name' filter lists 'Ghosez, Philippe (5)', 'Bastogne, Louis (4)', 'Fantoli, Margherita (3)', and 'Gómez-Ortiz, Fernando (3)'. The main content area shows '1 to 10 of 38 Results' and a 'Sort' dropdown. Two search results are visible: 'CaTiO3 Second-Principles Interatomic Potential' (5 nov. 2025) and 'Structural parameters for the article "Pathways to crystal chirality An algorithm to identify new displacive chiral phase transitions"' (3 oct. 2025).



LIÈGE université
RISE

Recherche Innovation
Support Entreprises

The

Dataverse[®]

Project

