



Living Environment Assessment Tools for Older People: a Systematic Literature Review

*Valériane Tannoia, Catherine Elsen, Gwendoline Schaff, Nikita Beliy,
Stéphane Adam, Christina Schmidt, Olivier Bruyère & Maëlle Scouvemont*

*ENHR Grand Paris 2025:
Affordable Housing in
Greening Cities*



« Nursing home »

« I call nursing home, the waiting room for the death ! »

(testimony of a senior)

« Nursing home »

« I call nursing home, the waiting room for the death ! »

(testimony of a senior)



« hospital environment »

« place to die »

« Loss of freedom, autonomy
and privacy »

Context

Older
people

Policies

Stay at
home

Older
people

Policies

Stay at
home

Older
people

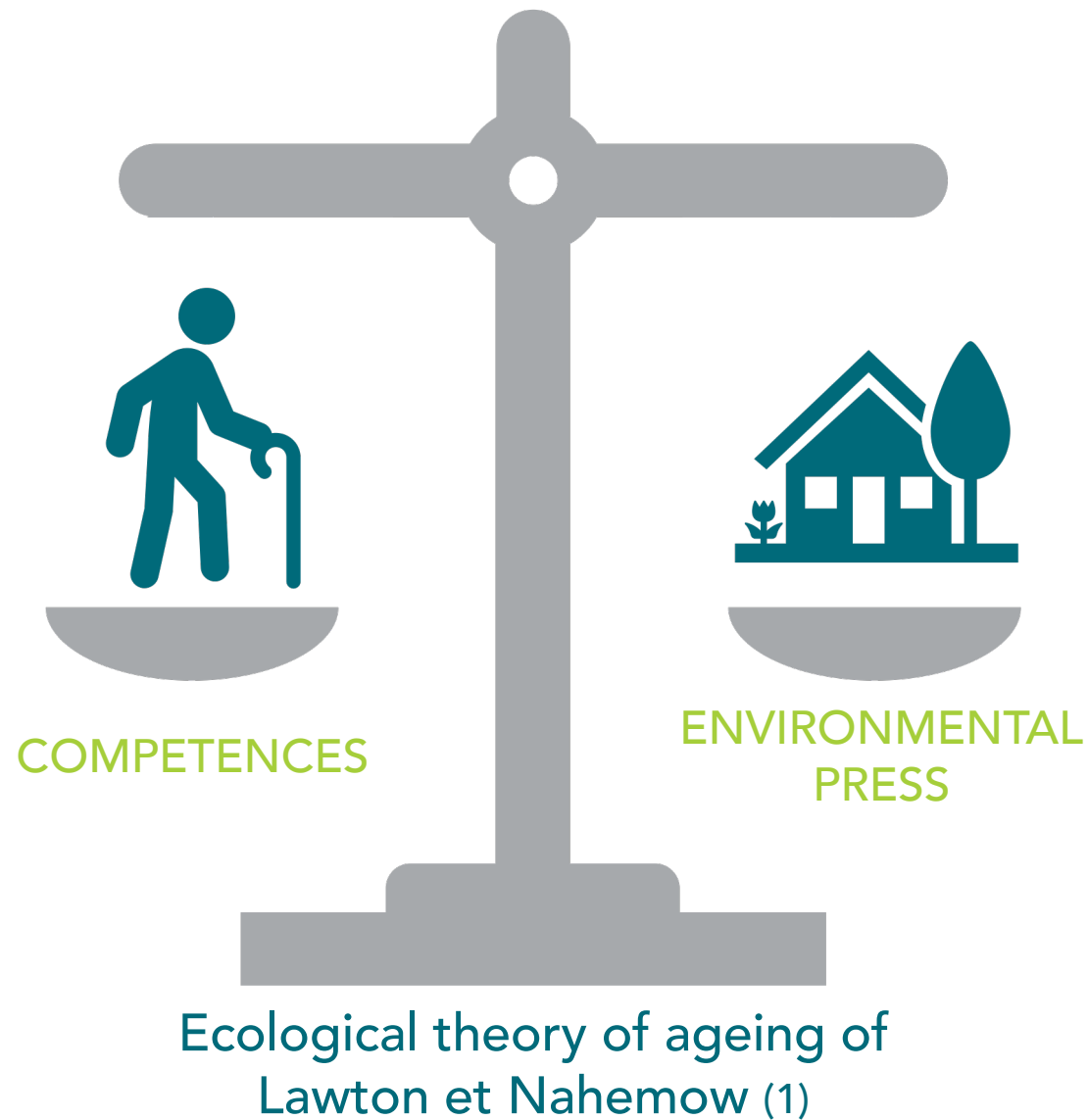
Policies



@istockphoto



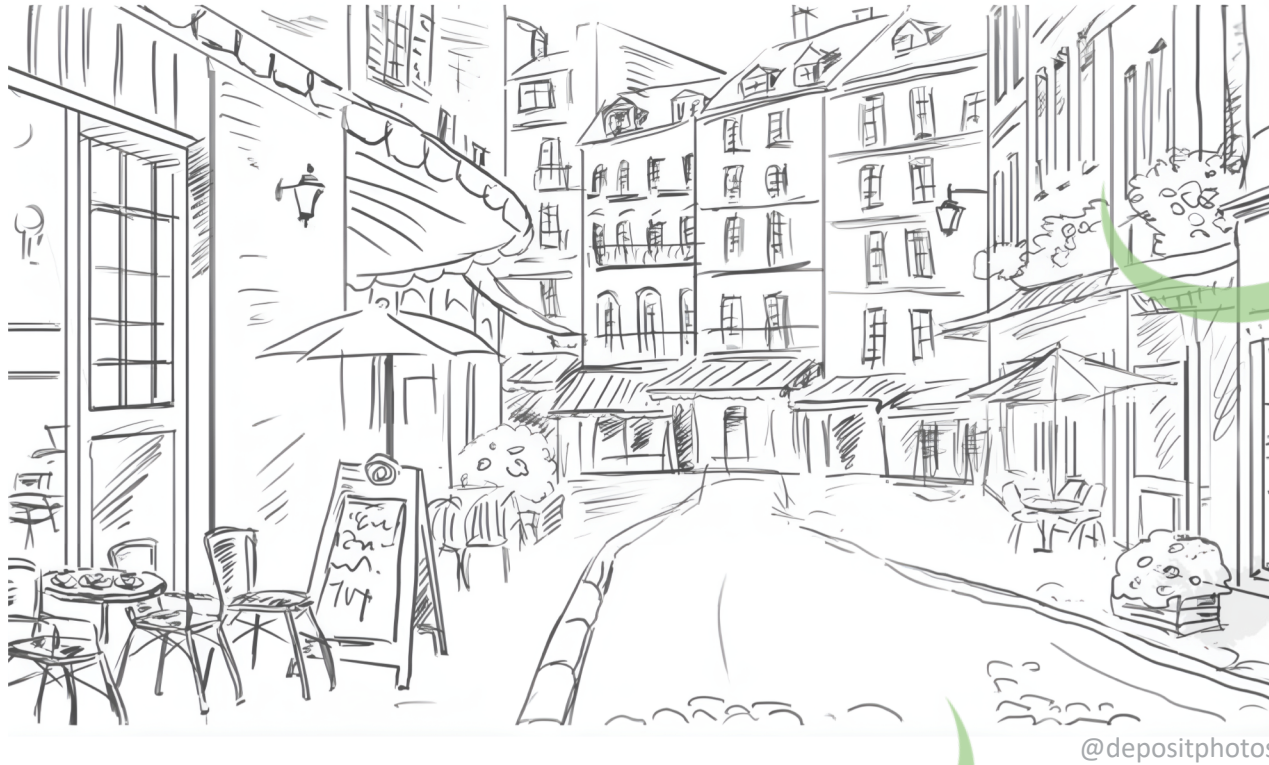
@istockphoto



Objective



Objective



Home
> Private built environment

Neighbourhood
> Public built environment



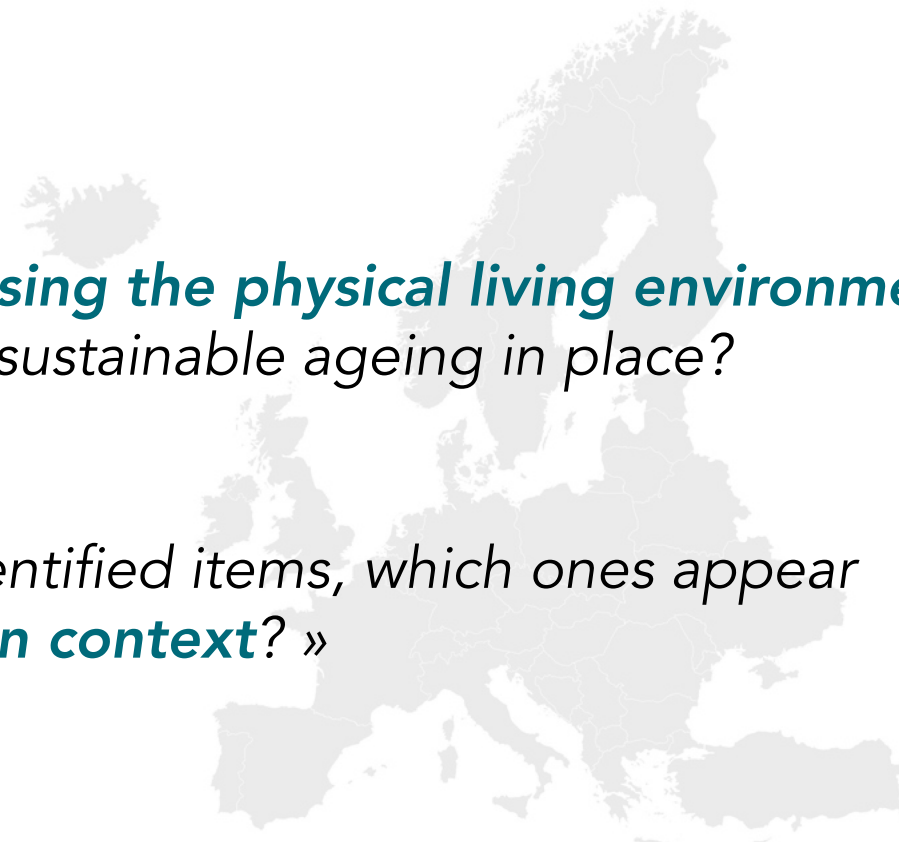
« What are the **key items** for **assessing the physical living environment** of older adults in order to support sustainable ageing in place?



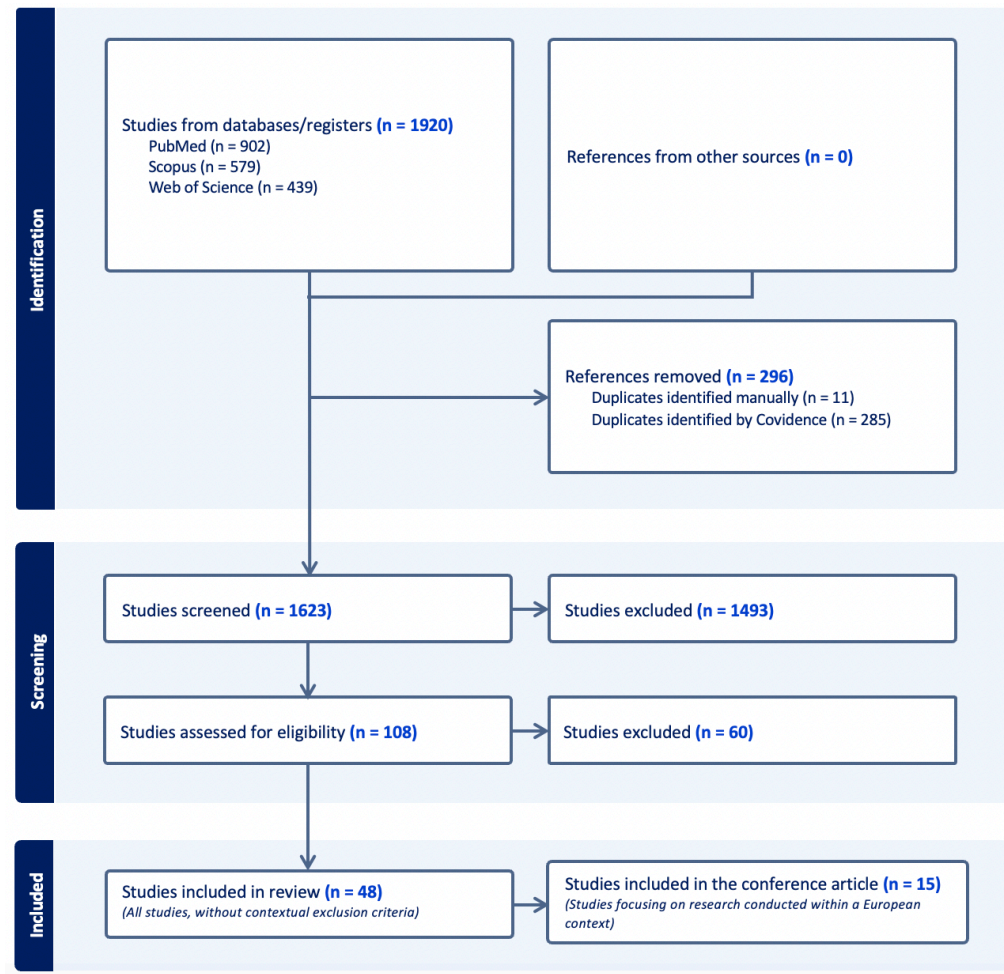
Research Questions

« What are the **key items** for **assessing the physical living environment** of older adults in order to support sustainable ageing in place?

Based on the cartography of all identified items, which ones appear **most relevant within the European context?** »



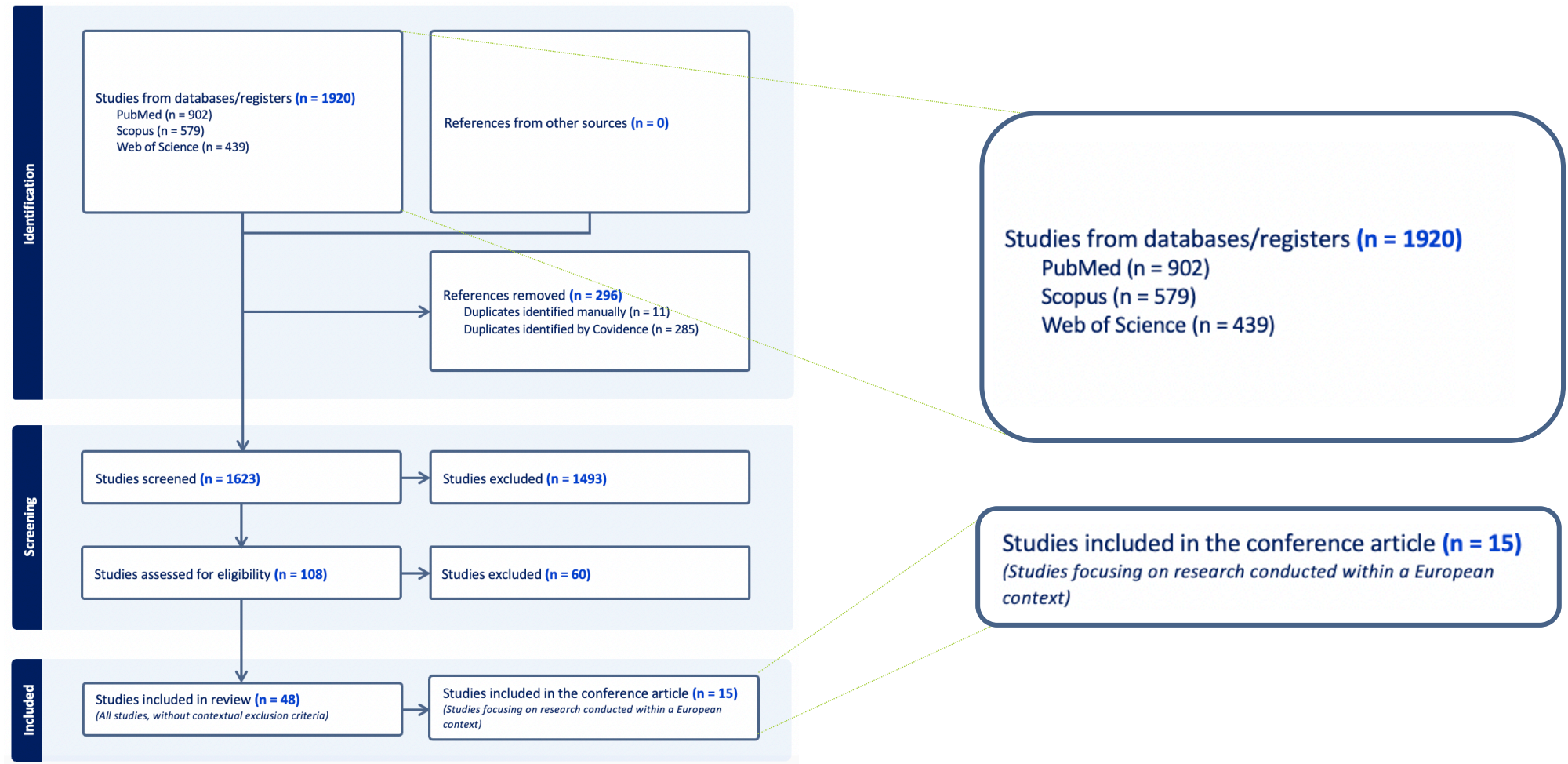
PRISMA framework (Preferred Reporting Items for Systematic Reviews and Meta-Analyses) (2)



(2) Page, M. J., McKenzie, J. E., Bossuyt, P. M., Boutron, I., Hoffmann, T. C., Mulrow, C. D., Shamseer, L., Tetzlaff, J. M., Akl, E. A., Brennan, S. E., Chou, R., Glanville, J., Grimshaw, J. M., Hróbjartsson, A., Lalu, M. M., Li, T., Loder, E. W., Mayo-Wilson, E., McDonald, S., ... Moher, D. (2021). The PRISMA 2020 statement : An updated guideline for reporting systematic reviews. *BMJ (Clinical Research Ed.)*, 372, n71. <https://doi.org/10.1136/bmj.n71>

Methodology

PRISMA framework (Preferred Reporting Items for Systematic Reviews and Meta-Analyses) (2)



(2) Page, M. J., McKenzie, J. E., Bossuyt, P. M., Boutron, I., Hoffmann, T. C., Mulrow, C. D., Shamseer, L., Tetzlaff, J. M., Akl, E. A., Brennan, S. E., Chou, R., Glanville, J., Grimshaw, J. M., Hróbjartsson, A., Lalu, M. M., Li, T., Loder, E. W., Mayo-Wilson, E., McDonald, S., ... Moher, D. (2021). The PRISMA 2020 statement : An updated guideline for reporting systematic reviews. *BMJ (Clinical Research Ed.)*, 372, n71. <https://doi.org/10.1136/bmj.n71>

Main results

Mapping of items

486 items



153 items

> Public environment

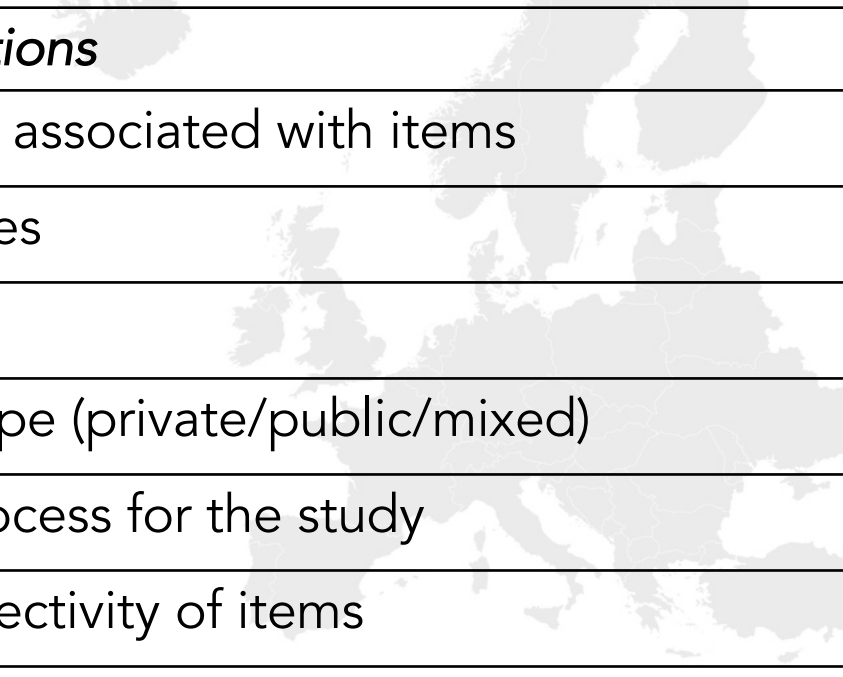


333 items

> Private environment

Main results

Supplementary informations



	<i>Extracted informations</i>
1	Assessment tool(s) associated with items
2	Main topics/Themes
3	Target population
4	Environmental scope (private/public/mixed)
5	Items selection process for the study
6	Objectivity vs subjectivity of items
7	Extracted items and their categorisation

Main results & discussion

Assessment tool(s) associated with items



OPERAT
Older People's External
Residential Assessment Tool

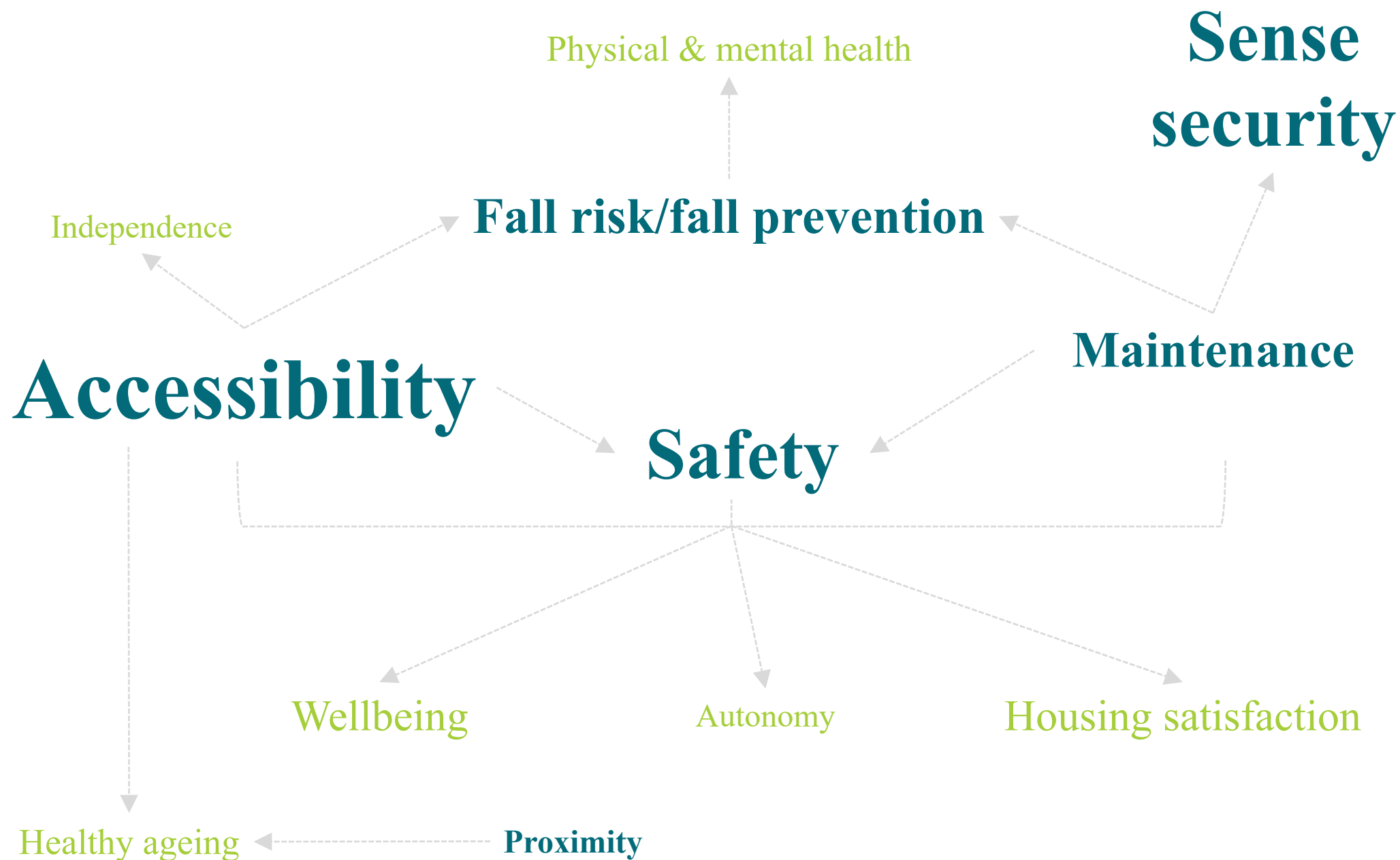
Main results & discussion

Main topics/Themes



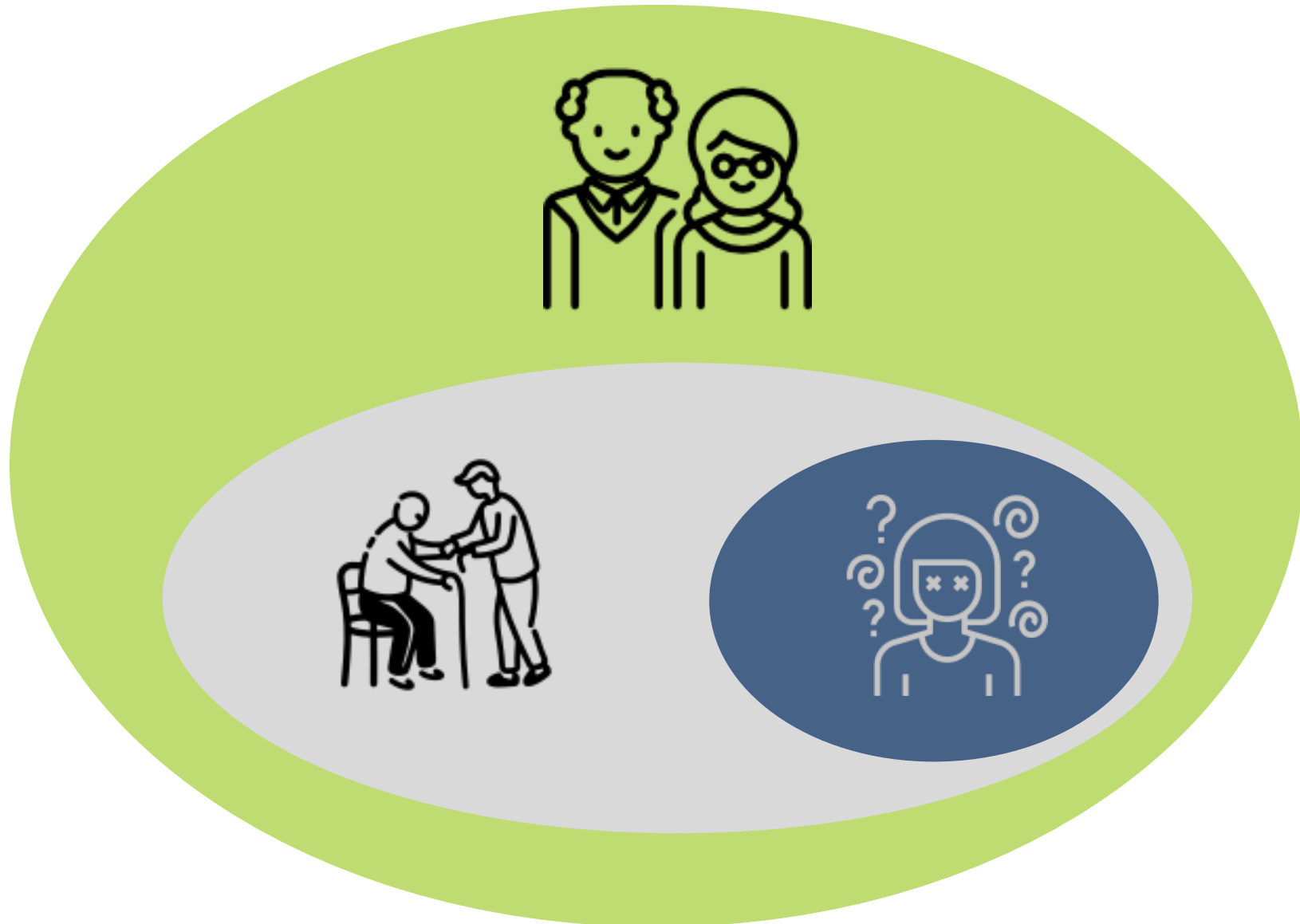
Main results & discussion

Main topics/Themes



Main results & discussion

Target population



Main results & discussion

Environmental scope



Main results & discussion

Environmental scope



Main results & discussion

Environmental scope



Main results & discussion

Items selection process



LITERATURE



EXPERTS



TOOLS



Main results & discussion

Objectivity vs subjectivity of items

Objective



Subjective



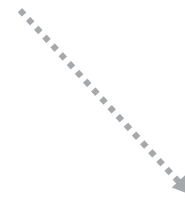
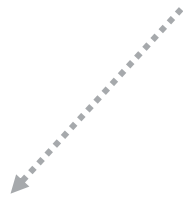
items

Main results & discussion

Extracted items and their categorisation



Conclusion



Objective
VS
Subjective



Valériane Tannoia – PhD student



Bât. B52/3 Composition architecturale
Quartier Polytech 1
allée de la Découverte 9
4000 Liège 1
Belgique



Valeriane.Tannoia@uliege.be

ORCID

0009-0004-3897-1264