

Supporting information

A giant's appetite: how body size drives the diet and trophic position of the Japanese giant salamander

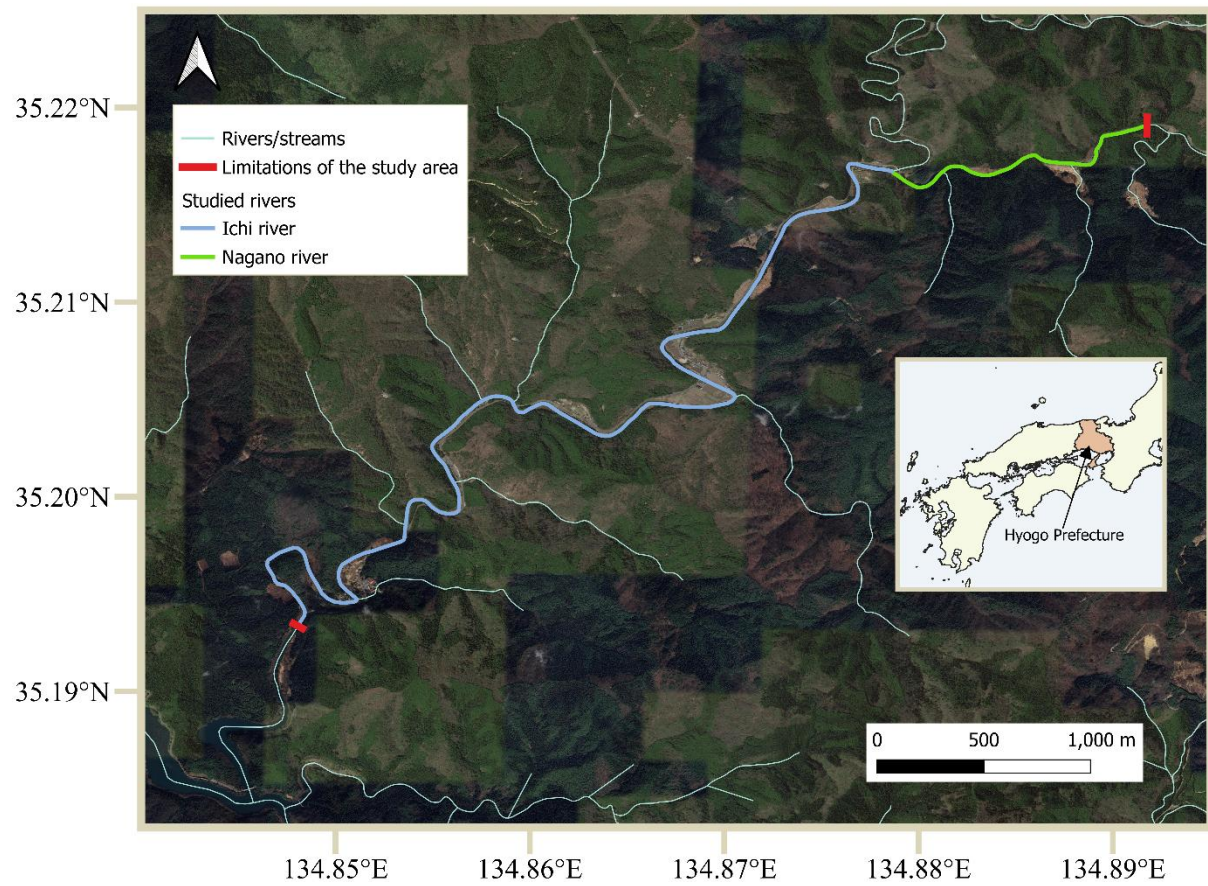


Figure S1. Map of the study area showing the two focal rivers: the Ichi River (bold blue line) and the Nagano River (bold green line).



Figure S2. Example of prey items obtained by stomach flushing of a Japanese giant salamander (SVL = 44.2 cm, TL = 66 cm). Photo by XXX.

Table S1. Description of the five local habitat characteristics recorded for each Japanese giant salamander captured.

Variable	Unit	Description
Water velocity	m/s	Flow speed at the capture location (Flowatch kit 2)
Water depth	cm	Depth of the river at the capture location
River width	m	Total width of the river at the capture site
Relative channel position	-	Ratio of distance to riverbank (m) to river width (m), ranging from 0 (riverbank) to 0.5 (mid-channel)
Agricultural land cover	%	Percentage of agricultural land within a 100 m radius around the capture site, estimated using GIS (QGIS 3.34.6, MLIT of Japan)

Table S2. Reference materials used for stable isotope analysis in both Belgium and Japan.

Location	Reference Material	$\delta^{15}\text{N}$ (‰)	$\delta^{13}\text{C}$ (‰)	Source
Belgium	Ammonium sulphate (IAEA-N2)	20.3 ± 0.2	-	IAEA, Vienna
	Sucrose (IAEA C-6)	-	-10.8 ± 0.5	IAEA, Vienna
	Glycine (internal standard)	2.3 ± 0.3	-47.5 ± 0.3	LETIS Lab, Liège
Japan	L-Alanine (CERKU-02)	22.71 ± 0.06	-19.04 ± 0.04	CER Kyoto Univ. / BioGeos, JAMSTEC
	L-Threonine (CERKU-5)	-2.88 ± 0.01	-9.45 ± 0.05	CER Kyoto Univ. / BioGeos, JAMSTEC
	Alanine (internal standard)	1.79 ± 0.2	-19.9 ± 0.2	Shoko Science Co., Ltd

Table S3. Mean \pm SD of $\delta^{13}\text{C}$ and $\delta^{15}\text{N}$ values of terrestrial and aquatic baselines in each section of the studied river sites, and gastropods. Sections I1 – I6 correspond to Ichi river and N1 to Nagano river. Bold values were calculated from primary consumers (*Semisulcospira spp.* snails). See details on the calculations in Materials and Methods.

Site	Terrestrial baseline		Aquatic baseline		Gastropods	
	$\delta^{13}\text{C}$ (‰)	$\delta^{15}\text{N}$ (‰)	$\delta^{13}\text{C}$ (‰)	$\delta^{15}\text{N}$ (‰)	$\delta^{13}\text{C}$ (‰)	$\delta^{15}\text{N}$ (‰)
I1	-30.2 \pm 0.6	-0.1 \pm 0.4	-15.3 \pm 1.5	2.4 \pm 0.5	-14.9 \pm 0.9	4.7 \pm 0.3
I2	-30.3 \pm 0.6	-0.4 \pm 0.2	-14.2 \pm 1.3	2.1 \pm 0.6	-13.8 \pm 0.2	4.7 \pm 0.3
I3	-30.1 \pm 0.9	0.9 \pm 0.4	-15.0 \pm 1.5	3.4 \pm 1.3	-14.5 \pm 0.4	5.0 \pm 0.3
I4	-29.6 \pm 0.9	-0.4 \pm 0.3	-14.6 \pm 1.9	2.9 \pm 1.5	-14.3 \pm 0.8	4.7 \pm 0.3
I5	-31.2 \pm 0.3	-0.3 \pm 0.6	-15.4 \pm 0.9	2.1 \pm 0.7	-15.0 \pm 0.9	4.0 \pm 0.7
N1	-30.1 \pm 0.2	-0.7 \pm 0.4	-14.7 \pm 0.6	1.0 \pm 0.8	-14.2 \pm 0.6	3.2 \pm 0.4

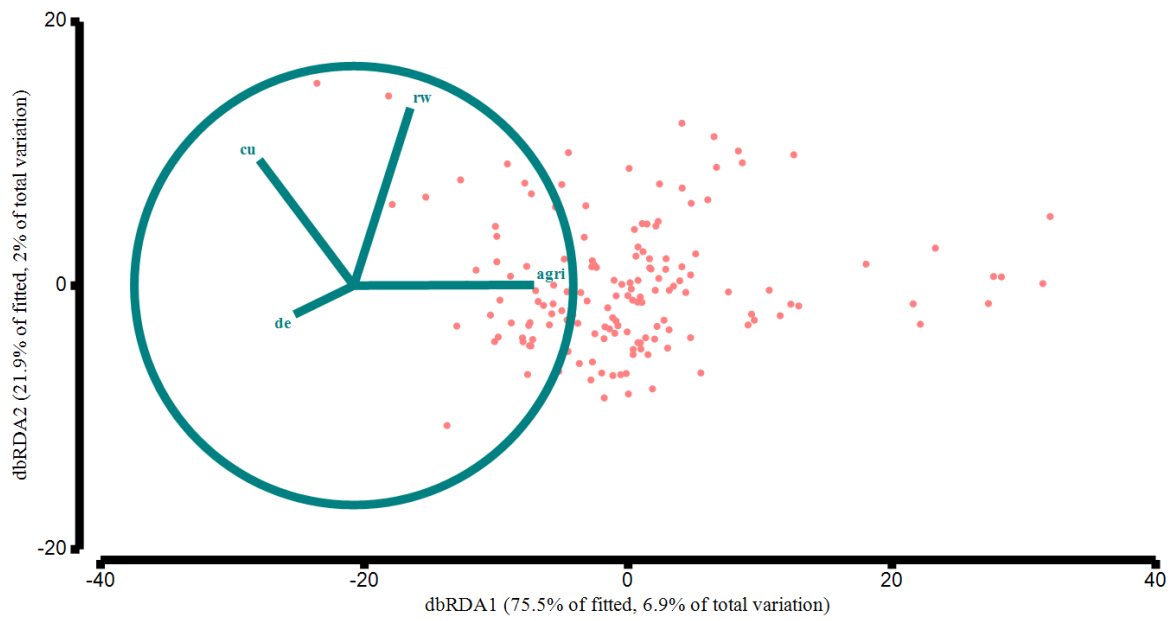


Figure S3. Results of the dbRDA conducted to assess the potential influence of habitat characteristics on prey composition in stomach contents. Cu: water velocity; de: water depth; pr: relative position in the river; rw: river width; agri: proportion of agricultural area.

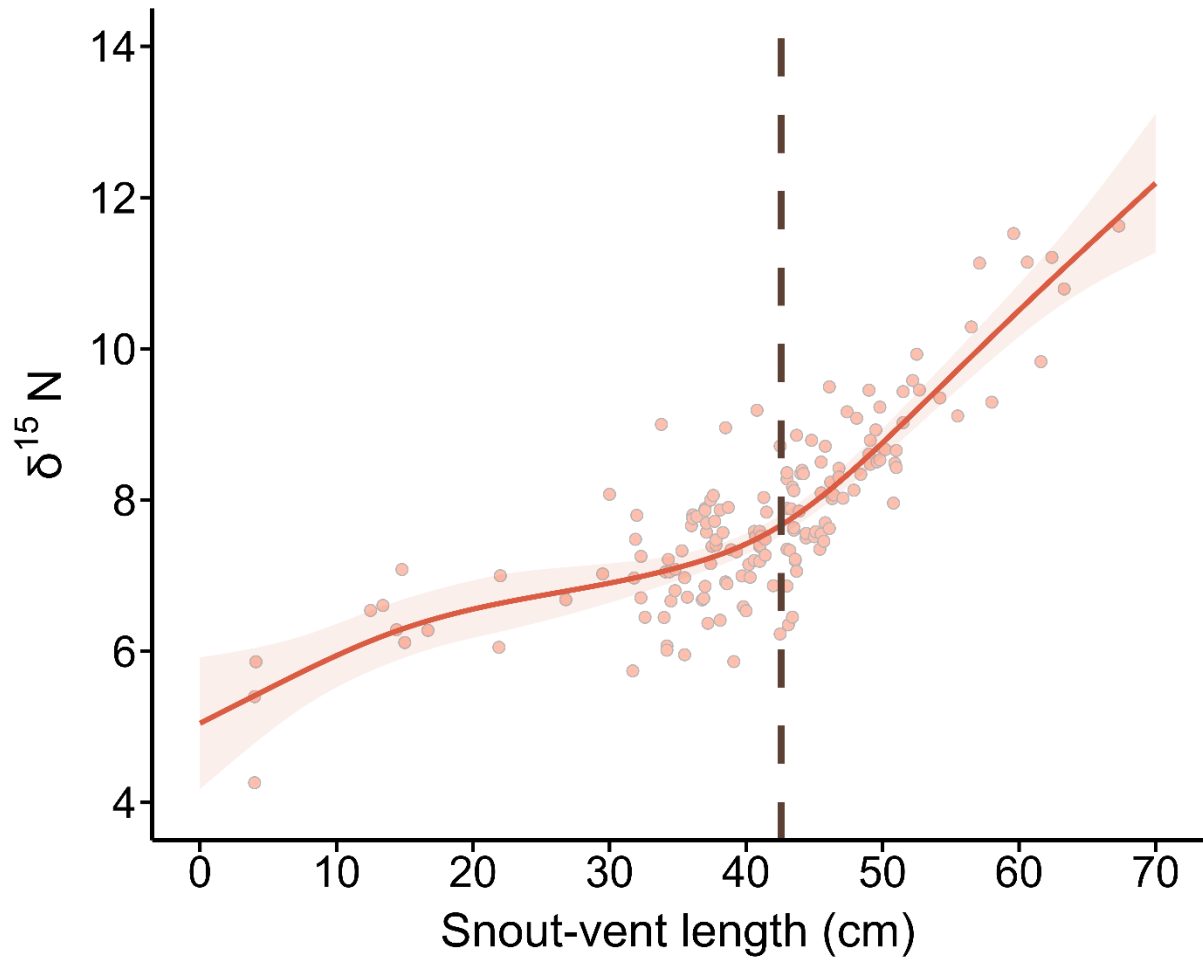


Figure S4. Increase in $\delta^{15}\text{N}$ isotope ratio as a function of SVL in Japanese giant salamanders. The trend line represent GAM with 95% confidence interval (shaded areas). The dashed vertical line represents the threshold at a SVL of 42.57 cm calculated from $\delta^{15}\text{N}$ values. Each dot corresponds to an individual value.

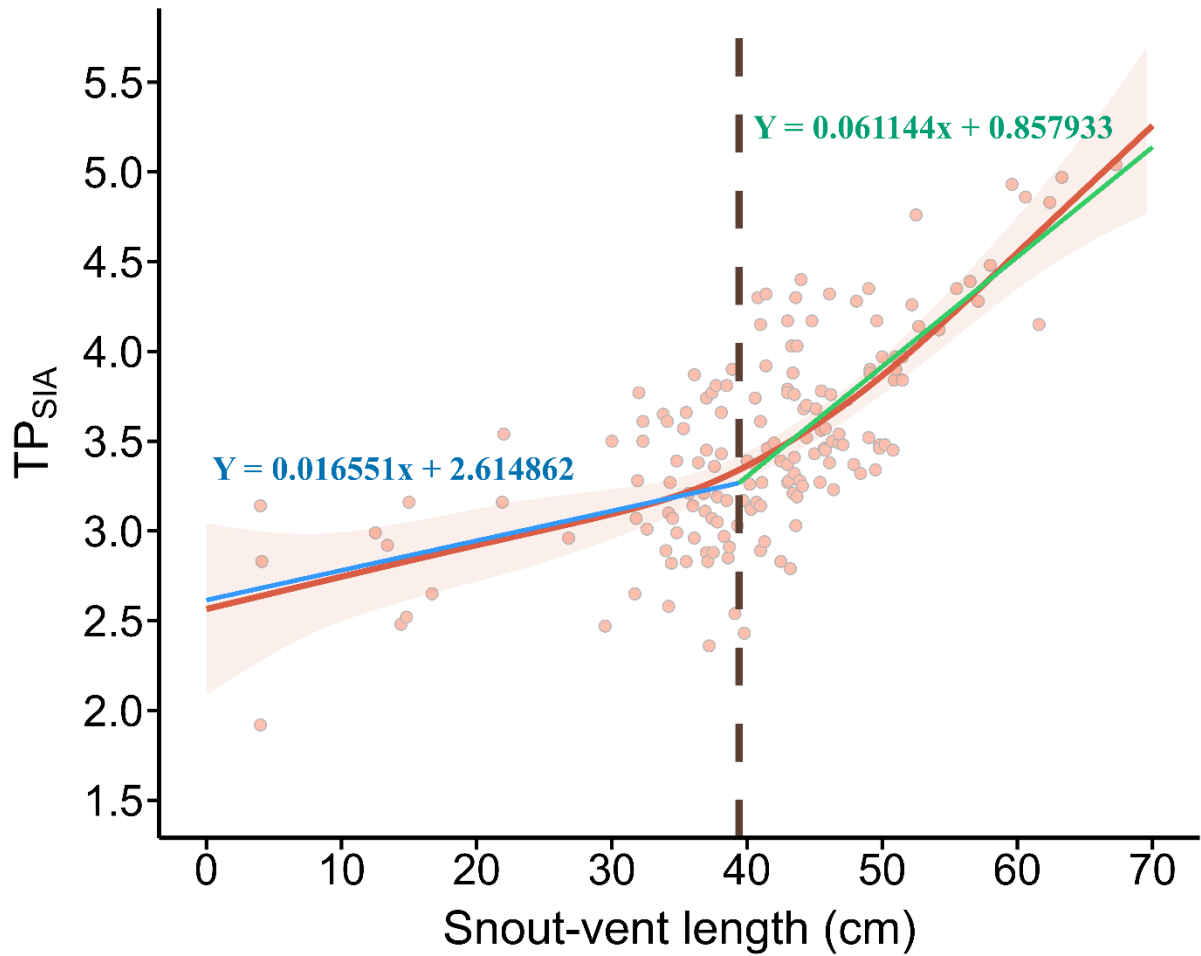


Figure S5. Results of the piecewise linear model with the breakpoint found at SVL = 39.40 cm (brown dashed vertical line) and the division of the initial GAM curve (red dashed) into two linear regressions (blue line for SVL < 39.40 cm; green line for SVL > 39.40 cm). For salamanders with a SVL between 0 and 39.40 cm, the equation of the regression is $Y = 0.016551x + 2.614862$ and for salamanders with an SVL above 39.40 cm, the equation is $Y = 0.061144x + 0.857933$, where Y represents the trophic position and x is the SVL.

Table S4. Results of the stable isotope mixing models run for each individuals. The relative contributions to the diet (mode (95% CI)) are presented for the four food sources. Data with an asterisk were not used in the development of the GAM models because the isotope values of these individuals fell outside the mixing polygon defined by the sources. SVL: snout-vent length.

SVL (cm)	Food sources			
	Freshwater crabs	Fish	Frog	Macroinvertebrates
4	0.07 (0.02-0.52)	0.08 (0.02-0.28)	0.09 (0.02-0.48)	0.49 (0.27-0.78)
4	0.05 (0.01-0.38)	0.04 (0.01-0.19)	0.04 (0.01-0.37)	0.63 (0.42-0.89)
4.1	0.12 (0.03-0.70)	0.08 (0.02-0.30)	0.11 (0.03-0.60)	0.33 (0.09-0.66)
12.5	0.08 (0.02-0.49)	0.11 (0.03-0.25)	0.09 (0.02-0.36)	0.54 (0.28-0.79)
13.4	0.11 (0.03-0.73)	0.11 (0.02-0.33)	0.08 (0.03-0.40)	0.41 (0.09-0.71)
14.4	0.06 (0.01-0.27)	0.09 (0.02-0.24)	0.05 (0.01-0.24)	0.69 (0.52-0.87)
14.8	0.07 (0.02-0.62)	0.37 (0.07-0.56)	0.05 (0.01-0.21)	0.4 (0.09-0.74)
15	0.06 (0.02-0.39)	0.06 (0.01-0.20)	0.06 (0.02-0.31)	0.66 (0.42-0.86)
16.7	0.14 (0.03-0.72)	0.12 (0.03-0.35)	0.1 (0.31-0.59)	0.27 (0.06-0.59)
21.9	0.1 (0.03-0.66)	0.06 (0.02-0.25)	0.17 (0.03-0.58)	0.3 (0.08-0.74)
22	0.06 (0.02-0.61)	0.38 (0.14-0.56)	0.06 (0.01-0.22)	0.39 (0.13-0.54)
26.8	0.08 (0.02-0.60)	0.08 (0.02-0.31)	0.07 (0.02-0.34)	0.52 (0.22-0.81)
26.9	0.11 (0.03-0.73)	0.08 (0.02-0.29)	0.31 (0.03-0.59)	0.25 (0.04-0.67)
29.5	0.08 (0.02-0.65)	0.34 (0.06-0.53)	0.06 (0.01-0.25)	0.38 (0.10-0.73)
30	0.05 (0.01-0.32)	0.65 (0.44-0.84)	0.04 (0.01-0.19)	0.15 (0.03-0.41)
31.7	0.11 (0.03-0.74)	0.06 (0.02-0.26)	0.09 (0.02-0.68)	0.28 (0.06-0.67)
31.8	0.08 (0.02-0.55)	0.17 (0.03-0.39)	0.07 (0.02-0.28)	0.5 (0.21-0.81)
31.9	0.08 (0.02-0.42)	0.34 (0.18-0.46)	0.07 (0.02-0.31)	0.39 (0.14-0.60)
32	0.07 (0.02-0.46)	0.53 (0.27-0.73)	0.06 (0.01-0.24)	0.21 (0.04-0.52)
32.3	0.09 (0.02-0.68)	0.41 (0.14-0.60)	0.06 (0.02-0.26)	0.3 (0.06-0.47)

32.3	0.14 (0.03-0.67)	0.24 (0.05-0.45)	0.11 (0.03-0.53)	0.24 (0.06-0.54)
32.6	0.12 (0.03-0.61)	0.22 (0.04-0.42)	0.12 (0.03-0.51)	0.31 (0.10-0.62)
33.8	0.06 (0.02-0.33)	0.7 (0.52-0.85)	0.06 (0.02-0.26)	0.04 (0.01-0.20)
34	0.12 (0.03-0.73)	0.21 (0.04-0.42)	0.07 (0.02-0.37)	0.33 (0.06-0.63)
34.1	0.08 (0.02-0.41)	0.24 (0.08-0.37)	0.08 (0.02-0.32)	0.48 (0.23-0.70)
34.2	0.08 (0.02-0.43)	0.05 (0.01-0.22)	0.07 (0.01-0.39)	0.59 (0.35-0.86)
34.2	0.11 (0.03-0.67)	0.12 (0.02-0.33)	0.12 (0.03-0.54)	0.33 (0.12-0.66)
34.3	0.11 (0.03-0.69)	0.36 (0.10-0.55)	0.08 (0.02-0.34)	0.26 (0.05-0.44)
34.4	0.12 (0.03-0.77)	0.15 (0.03-0.37)	0.15 (0.03-0.49)	0.23 (0.04-0.62)
34.5	0.07 (0.02-0.54)	0.11 (0.02-0.31)	0.07 (0.02-0.31)	0.54 (0.26-0.81)
34.8	0.07 (0.02-0.48)	0.15 (0.03-0.37)	0.06 (0.02-0.27)	0.56 (0.30-0.83)
34.8	0.1 (0.02-0.50)	0.37 (0.15-0.57)	0.07 (0.02-0.40)	0.26 (0.07-0.52)
35.3	0.16 (0.04-0.77)	0.16 (0.03-0.32)	0.19 (0.03-0.55)	0.17 (0.03-0.56)
35.5	0.1 (0.03-0.52)	0.2 (0.05-0.33)	0.08 (0.02-0.37)	0.47 (0.19-0.69)
35.5	0.1 (0.03-0.64)	0.12 (0.02-0.34)	0.12 (0.03-0.55)	0.35 (0.14-0.67)
35.7	0.1 (0.02-0.44)	0.34 (0.08-0.52)	0.08 (0.02-0.38)	0.34 (0.16-0.63)
36	0.08 (0.02-0.51)	0.34 (0.12-0.58)	0.06 (0.02-0.26)	0.37 (0.09-0.68)
36.1	0.09 (0.02-0.56)	0.4 (0.15-0.58)	0.06 (0.02-0.28)	0.3 (0.06-0.61)
36.1	0.1 (0.02-0.59)	0.36 (0.12-0.56)	0.07 (0.02-0.30)	0.32 (0.06-0.63)
36.4	0.07 (0.02-0.52)	0.4 (0.15-0.61)	0.06 (0.02-0.28)	0.33 (0.07-0.64)
36.8	0.13 (0.04-0.73)	0.19 (0.05-0.41)	0.12 (0.03-0.61)	0.16 (0.04-0.50)
36.9	0.09 (0.02-0.50)	0.34 (0.09-0.51)	0.08 (0.02-0.40)	0.32 (0.13-0.62)
37	0.13 (0.02-0.58)	0.49 (0.26-0.70)	0.09 (0.02-0.30)	0.14 (0.03-0.33)
37	0.09 (0.02-0.57)	0.39 (0.15-0.59)	0.08 (0.02-0.31)	0.29 (0.06-0.60)
37	0.09 (0.02-0.44)	0.34 (0.11-0.55)	0.11 (0.02-0.37)	0.32 (0.13-0.59)
37.1	0.1 (0.02-0.61)	0.39 (0.14-0.60)	0.09 (0.02-0.34)	0.22 (0.40-0.54)
37.1	0.12 (0.04-0.71)	0.3 (0.08-0.47)	0.13 (0.03-0.40)	0.25 (0.04-0.58)

37.2	0.12 (0.03-0.59)	0.2 (0.04-0.42)	0.09 (0.03-0.49)	0.33 (0.13-0.63)
37.4	0.11 (0.03-0.68)	0.18 (0.04-0.39)	0.08 (0.02-0.33)	0.41 (0.11-0.74)
37.4	0.1 (0.03-0.58)	0.4 (0.18-0.60)	0.08 (0.22-0.34)	0.21 (0.04-0.55)
37.5	0.1 (0.03-0.50)	0.4 (0.21-0.62)	0.1 (0.03-0.44)	0.17 (0.04-0.44)
37.6	0.08 (0.03-0.54)	0.39 (0.21-0.64)	0.08 (0.02-0.32)	0.23 (0.04-0.55)
37.7	0.15 (0.03-0.60)	0.31 (0.13-0.46)	0.11 (0.03-0.46)	0.21 (0.04-0.45)
37.8	0.05 (0.01-0.50)	0.46 (0.13-0.67)	0.04 (0.01-0.18)	0.29 (0.07-0.68)
37.8	0.1 (0.03-0.56)	0.28 (0.13-0.43)	0.08 (0.02-0.40)	0.34 (0.07-0.55)
38.1	0.13 (0.02-0.49)	0.38 (0.23-0.52)	0.1 (0.03-0.39)	0.05 (0.05-0.47)
38.1	0.12 (0.03-0.71)	0.18 (0.03-0.37)	0.12 (0.03-0.59)	0.25 (0.06-0.56)
38.3	0.07 (0.02-0.54)	0.49 (0.26-0.71)	0.05 (0.02-0.23)	0.25 (0.06-0.42)
38.5	0.07 (0.02-0.35)	0.64 (0.48-0.82)	0.011 (0.02-0.32)	0.04 (0.01-0.19)
38.5	0.1 (0.02-0.49)	0.32 (0.12-0.55)	0.1 (0.02-0.43)	0.25 (0.09-0.55)
38.6	0.1 (0.03-0.72)	0.3 (0.05-0.47)	0.07 (0.02-0.31)	0.39 (0.07-0.68)
38.7	0.1 (0.02-0.58)	0.4 (0.16-0.60)	0.06 (0.02-0.31)	0.24 (0.05-0.59)
38.9	0.12 (0.03-0.72)	0.22 (0.05-0.40)	0.11 (0.02-0.40)	0.32 (0.06-0.66)
39.1	0.1 (0.03-0.76)	0.06 (0.02-0.26)	0.11 (0.03-0.77)	0.25 (0.04-0.63)
39.3	0.09 (0.02-0.44)	0.42 (0.22-0.62)	0.09 (0.02-0.40)	0.21 (0.05-0.47)
39.7	0.1 (0.02-0.52)	0.23 (0.06-0.34)	0.1 (0.02-0.37)	0.46 (0.18-0.68)
39.8	0.11 (0.03-0.74)	0.15 (0.02-0.34)	0.1 (0.02-0.42)	0.37 (0.08-0.71)
40	0.1 (0.03-0.61)	0.24 (0.05-0.44)	0.12 (0.03-0.47)	0.31 (0.10-0.60)
40.2	0.08 (0.02-0.43)	0.23 (0.10-0.39)	0.06 (0.02-0.31)	0.48 (0.21-0.67)
40.3	0.1 (0.03-0.57)	0.34 (0.12-0.54)	0.11 (0.03-0.46)	0.25 (0.06-0.52)
40.6	0.11 (0.03-0.70)	0.27 (0.07-0.48)	0.09 (0.02-0.38)	0.28 (0.05-0.62)
40.6	0.11 (0.03-0.55)	0.24 (0.09-0.38)	0.08 (0.02-0.37)	0.41 (0.13-0.64)
40.7	0.11 (0.03-0.60)	0.42 (0.14-0.61)	0.09 (0.02-0.30)	0.22 (0.04-0.56)
40.8	0.05 (0.01-0.29)	0.71 (0.54-0.89)	0.06 (0.01-0.26)	0.04 (0.01-0.21)

41	0.09 (0.03-0.64)	0.26 (0.06-0.47)	0.07 (0.02-0.30)	0.39 (0.10-0.71)
41	0.1 (0.03-0.66)	0.26 (0.06-0.45)	0.08 (0.02-0.34)	0.36 (0.08-0.68)
41	0.07 (0.02-0.53)	0.34 (0.10-0.55)	0.07 (0.02-0.27)	0.37 (0.09-0.70)
41	0.09 (0.02-0.70)	0.27 (0.05-0.47)	0.08 (0.02-0.30)	0.39 (0.07-0.68)
41.1	0.15 (0.03-0.60)	0.3 (0.12-0.43)	0.1 (0.03-0.45)	0.28 (0.06-0.51)
41.3	0.12 (0.03-0.57)	0.37 (0.19-0.53)	0.1 (0.03-0.44)	0.17 (0.03-0.40)
41.4	0.09 (0.02-0.58)	0.29 (0.08-0.52)	0.06 (0.02-0.28)	0.41 (0.10-0.71)
41.4	0.17 (0.03-0.76)	0.22 (0.04-0.41)	0.17 (0.03-0.50)	0.17 (0.04-0.55)
41.5	0.12 (0.03-0.63)	0.35 (0.13-0.54)	0.11 (0.02-0.37)	0.23 (0.04-0.55)
42	0.14 (0.03-0.68)	0.23 (0.07-0.46)	0.1 (0.03-0.54)	0.24 (0.05-0.49)
42.5	0.1 (0.02-0.45)	0.53 (0.34-0.72)	0.07 (0.02-0.32)	0.09 (0.02-0.38)
42.5	0.12 (0.03-0.73)	0.11 (0.03-0.35)	0.1 (0.03-0.59)	0.26 (0.06-0.59)
43	0.1 (0.03-0.62)	0.41 (0.20-0.60)	0.12 (0.03-0.40)	0.09 (0.03-0.42)
43	0.1 (0.03-0.58)	0.37 (0.15-0.59)	0.08 (0.02-0.31)	0.26 (0.05-0.59)
43	0.12 (0.03-0.59)	0.42 (0.22-0.62)	0.1 (0.03-0.40)	0.09 (0.03-0.42)
43	0.12 (0.04-0.75)	0.29 (0.05-0.45)	0.13 (0.03-0.44)	0.23 (0.03-0.53)
43	0.11 (0.03-0.62)	0.28 (0.09-0.49)	0.11 (0.03-0.51)	0.25 (0.06-0.52)
43.1	0.1 (0.03-0.58)	0.22 (0.04-0.41)	0.12 (0.02-0.47)	0.35 (0.14-0.64)
43.2	0.11 (0.03-0.58)	0.35 (0.16-0.59)	0.11 (0.03-0.50)	0.15 (0.03-0.42)
43.3	0.13 (0.04-0.73)	0.28 (0.08-0.46)	0.19 (0.03-0.50)	0.1 (0.03-0.47)
43.4	0.05 (0.02-0.39)	0.62 (0.42-0.82)	0.04 (0.01-0.20)	0.17 (0.03-0.33)
43.4	0.12 (0.03-0.66)	0.18 (0.04-0.41)	0.11 (0.03-0.52)	0.3 (0.08-0.59)
43.5	0.08 (0.02-0.42)	0.33 (0.21-0.49)	0.07 (0.02-0.32)	0.4 (0.11-0.56)
43.5	0.12 (0.03-0.57)	0.48 (0.24-0.66)	0.09 (0.02-0.33)	0.18 (0.03-0.43)
43.5	0.13 (0.03-0.71)	0.36 (0.10-0.53)	0.08 (0.02-0.36)	0.18 (0.04-0.52)
43.6	0.1 (0.3-0.50)	0.38 (0.19-0.59)	0.09 (0.03-0.43)	0.24 (0.05-0.50)
43.6	0.13 (0.03-0.67)	0.29 (0.1-0.52)	0.1 (0.03-0.58)	0.14 (0.03-0.41)

43.7	0.11 (0.02-0.44)	0.56 (0.38-0.76)	0.08 (0.02-0.31)	0.08 (0.02-0.35)
43.7	0.1 (0.03-0.59)	0.34 (0.13-0.55)	0.1 (0.02-0.46)	0.23 (0.05-0.50)
43.9	0.12 (0.03-0.70)	0.31 (0.09-0.49)	0.14 (0.03-0.45)	0.16 (0.03-0.52)
44	0.09 (0.02-0.52)	0.47 (0.27-0.67)	0.1 (0.02-0.34)	0.09 (0.03-0.43)
44.1	0.1 (0.03-0.51)	0.47 (0.27-0.67)	0.09 (0.02-0.33)	0.14 (0.03-0.44)
44.2	0.11 (0.03-0.45)	0.5 (0.33-0.63)	0.08 (0.02-0.36)	0.17 (0.03-0.37)
44.4	0.06 (0.02-0.59)	0.5 (0.23-0.70)	0.04 (0.01-0.21)	0.29 (0.07-0.45)
44.4	0.08 (0.02-0.40)	0.49 (0.29-0.69)	0.07 (0.02-0.35)	0.22 (0.04-0.45)
44.8	0.09 (0.02-0.46)	0.51 (0.35-0.74)	0.07 (0.02-0.33)	0.09 (0.02-0.35)
45	0.12 (0.03-0.56)	0.3 (0.13-0.44)	0.1 (0.02-0.40)	0.33 (0.07-0.54)
45.1	0.15 (0.03-0.61)	0.34 (0.15-0.59)	0.13 (0.03-0.56)	0.1 (0.02-0.34)
45.4	0.12 (0.03-0.72)	0.22 (0.04-0.42)	0.1 (0.02-0.39)	0.33 (0.07-0.68)
45.5	0.1 (0.03-0.54)	0.47 (0.27-0.65)	0.08 (0.02-0.38)	0.1 (0.02-0.40)
45.5	0.08 (0.02-0.46)	0.52 (0.33-0.74)	0.1 (0.02-0.43)	0.08 (0.02-0.31)
45.5	0.12 (0.03-0.52)	0.4 (0.24-0.66)	0.11 (0.02-0.45)	0.14 (0.03-0.41)
45.7	0.12 (0.03-0.74)	0.3 (0.07-0.48)	0.13 (0.03-0.43)	0.2 (0.04-0.53)
45.8	0.06 (0.01-0.35)	0.67 (0.50-0.84)	0.07 (0.02-0.25)	0.07 (0.02-0.24)
45.8	0.08 (0.02-0.49)	0.47 (0.27-0.67)	0.08 (0.02-0.43)	0.12 (0.03-0.38)
46.1	0.07 (0.02-0.37)	0.6 (0.45-0.83)	0.09 (0.02-0.33)	0.04 (0.01-0.25)
46.1	0.11 (0.03-0.67)	0.35 (0.11-0.55)	0.09 (0.02-0.32)	0.27 (0.05-0.56)
46.2	0.07 (0.02-0.40)	0.56 (0.39-0.78)	0.07 (0.02-0.37)	0.07 (0.02-0.29)
46.3	0.18 (0.04-0.65)	0.37 (0.15-0.52)	0.15 (0.03-0.49)	0.11 (0.03-0.36)
46.4	0.11 (0.03-0.63)	0.39 (0.16-0.59)	0.15 (0.03-0.43)	0.11 (0.03-0.38)
46.8	0.11 (0.03-0.70)	0.34 (0.15-0.54)	0.03 (0.03-0.53)	0.02 (0.02-0.34)
46.8	0.1 (0.03-0.57)	0.46 (0.24-0.65)	0.1 (0.03-0.41)	0.11 (0.02-0.36)
47.1	0.13 (0.03-0.65)	0.34 (0.15-0.56)	0.12 (0.02-0.40)	0.15 (0.03-0.50)
47.4	0.07 (0.02-0.36)	0.62 (0.46-0.83)	0.08 (0.02-0.27)	0.06 (0.02-0.31)

47.9	0.09 (0.03-0.49)	0.45 (0.28-0.58)	0.08 (0.02-0.38)	0.21 (0.04-0.41)
48.1	0.11 (0.02-0.42)	0.58 (0.40-0.77)	0.1 (0.02-0.34)	0.06 (0.02-0.30)
48.4	0.11 (0.03-0.63)	0.41 (0.18-0.57)	0.12 (0.03-0.45)	0.1 (0.02-0.41)
49	0.06 (0.01-0.34)	0.71 (0.52-0.85)	0.06 (0.01-0.27)	0.04 (0.01-0.19)
49	0.07 (0.02-0.39)	0.55 (0.40-0.71)	0.08 (0.02-0.31)	0.15 (0.03-0.33)
49.1	0.06 (0.01-0.33)	0.67 (0.49-0.86)	0.04 (0.01-0.18)	0.12 (0.02-0.29)
49.1	0.09 (0.02-0.47)	0.51 (0.35-0.73)	0.08 (0.02-0.34)	0.1 (0.02-0.35)
49.5	0.06 (0.02-0.36)	0.61 (0.46-0.78)	0.06 (0.02-0.30)	0.1 (0.02-0.27)
49.6	0.12 (0.02-0.50)	0.53 (0.32-0.70)	0.1 (0.02-0.35)	0.1 (0.02-0.34)
49.8	0.08 (0.02-0.45)	0.54 (0.39-0.78)	0.11 (0.02-0.38)	0.05 (0.01-0.27)
49.8	0.06 (0.02-0.35)	0.61 (0.43-0.83)	0.06 (0.02-0.36)	0.06 (0.02-0.25)
50	0.11 (0.03-0.58)	0.45 (0.26-0.65)	0.13 (0.03-0.44)	0.06 (0.02-0.34)
50.2	0.08 (0.02-0.42)	0.54 (0.36-0.75)	0.07 (0.02-0.30)	0.09 (0.02-0.39)
50.8	0.12 (0.04-0.66)	0.39 (0.14-0.57)	0.12 (0.03-0.44)	0.1 (0.03-0.41)
50.9	0.07 (0.02-0.40)	0.57 (0.40-0.80)	0.09 (0.02-0.32)	0.08 (0.02-0.32)
51	0.07 (0.02-0.38)	0.61 (0.41-0.82)	0.06 (0.02-0.26)	0.11 (0.02-0.34)
51	0.09 (0.02-0.45)	0.54 (0.38-0.70)	0.1 (0.02-0.34)	0.11 (0.03-0.31)
51.5	0.06 (0.02-0.33)	0.67 (0.49-0.84)	0.08 (0.02-0.27)	0.05 (0.02-0.27)
51.5	0.09 (0.02-0.44)	0.56 (0.39-0.75)	0.1 (0.02-0.33)	0.07 (0.02-0.31)
52.2	0.07 (0.02-0.39)*	0.61 (0.44-0.82)*	0.09 (0.02-0.36)*	0.04 (0.01-0.22)*
52.5	0.06 (0.01-0.33)*	0.67 (0.51-0.87)*	0.06 (0.01-0.31)*	0.04 (0.01-0.20)*
52.7	0.05 (0.01-0.30)	0.7 (0.52-0.87)	0.04 (0.01-0.27)	0.05 (0.01-0.22)
54.2	0.04 (0.01-0.26)	0.75 (0.57-0.89)	0.05 (0.01-0.26)	0.04 (0.01-0.18)
55.5	0.08 (0.02-0.51)	0.52 (0.33-0.73)	0.11 (0.03-0.42)	0.05 (0.01-0.26)
56.5	0.05 (0.01-0.26)*	0.74 (0.59-0.91)*	0.04 (0.01-0.24)*	0.03 (0.01-0.18)*
57.1	0.03 (0.01-0.16)*	0.85 (0.71-0.95)*	0.03 (0.01-0.16)*	0.02 (0.01-0.12)*
58	0.08 (0.02-0.44)	0.57 (0.39-0.78)	0.12 (0.03-0.39)	0.05 (0.01-0.26)

59.6	0.02 (0.01-0.14)*	0.87 (0.75-0.96)*	0.02 (0.01-0.14)*	0.02 (0.01-0.11)*
60.6	0.03 (0.01-0.17)*	0.87 (0.71-0.95)*	0.03 (0.01-0.15)*	0.02 (0.01-0.13)*
61.6	0.04 (0.01-0.29)	0.77 (0.58-0.90)	0.05 (0.01-0.24)	0.04 (0.01-0.15)
62.4	0.03 (0.01-0.16)*	0.86 (0.71-0.95)*	0.02 (0.01-0.15)*	0.02 (0.01-0.13)*
63.3	0.02 (0.01-0.12)*	0.9 (0.78-0.96)*	0.02 (0.01-0.11)*	0.02 (0.01-0.09)*
67.3	0.03 (0.01-0.17)*	0.86 (0.71-0.95)*	0.03 (0.01-0.15)*	0.02 (0.01-0.12)*