

Supplementary material

This supplementary material provides extra figures mentioned in the main paper, in the order of appearance in the text. Their caption (and an understanding of the main text) should suffice to grasp their meaning.



Fig. 9: Default PixPlot applied on our corpus of religious paintings.

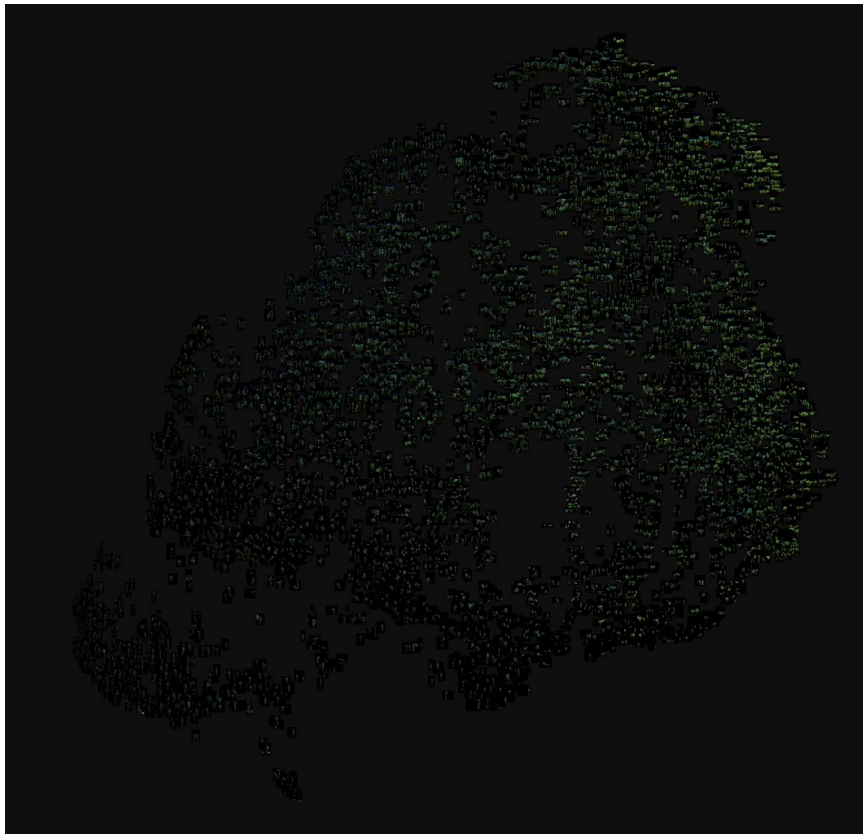


Fig. 10: Default **PixPlot** applied on our corpus of religious paintings transformed into skeletons.

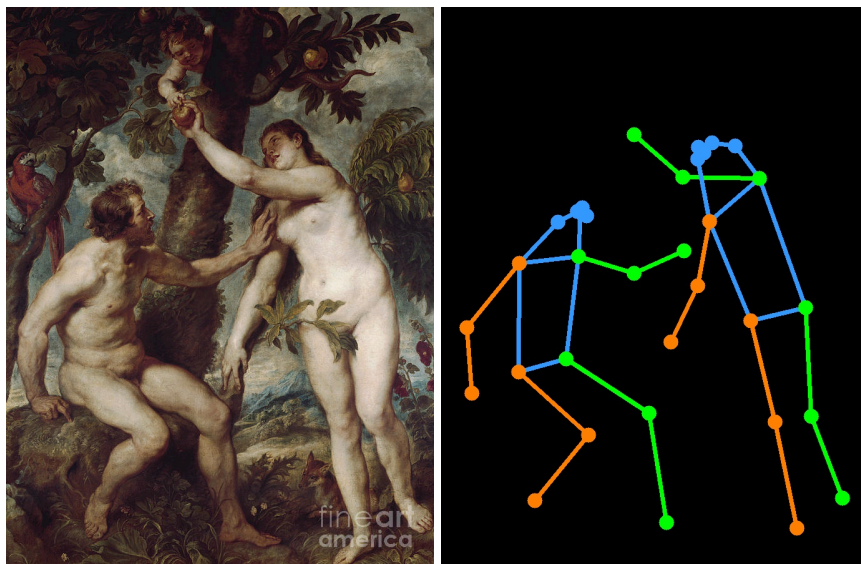


Fig. 11: Translation to skeleton images of the original image.

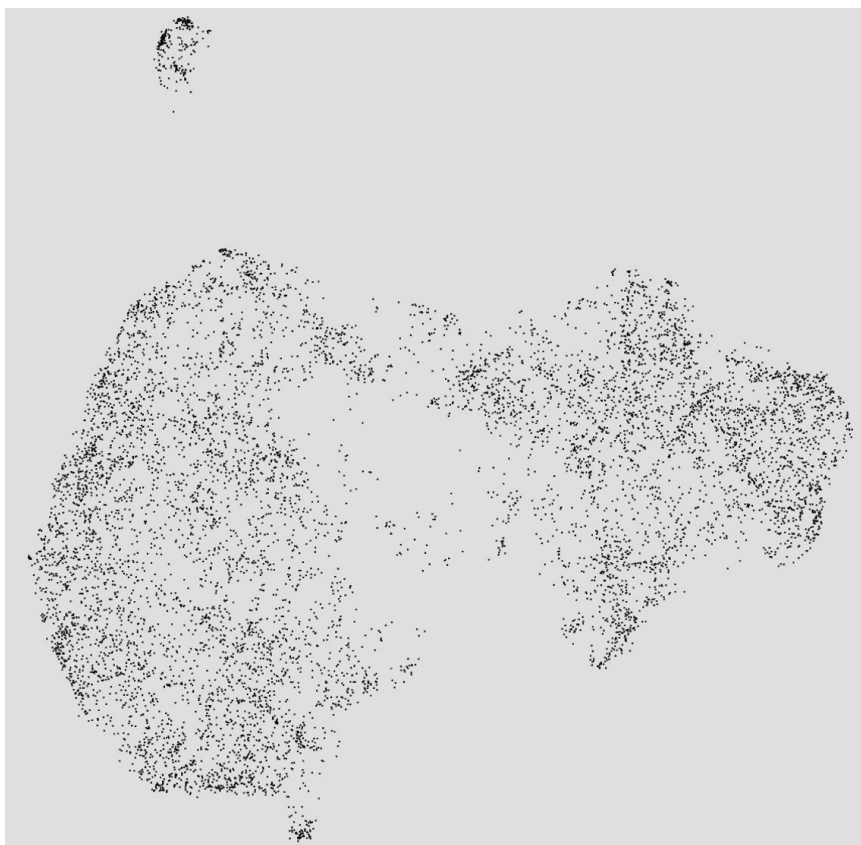


Fig. 12: Default **PixPlot** applied on our corpus of religious paintings transformed into skeletons each represented in an individual image.



Fig. 13: Default PixPlot applied on our corpus of religious paintings transformed into skeletons each represented in an individual image. Zoom in on a cluster.

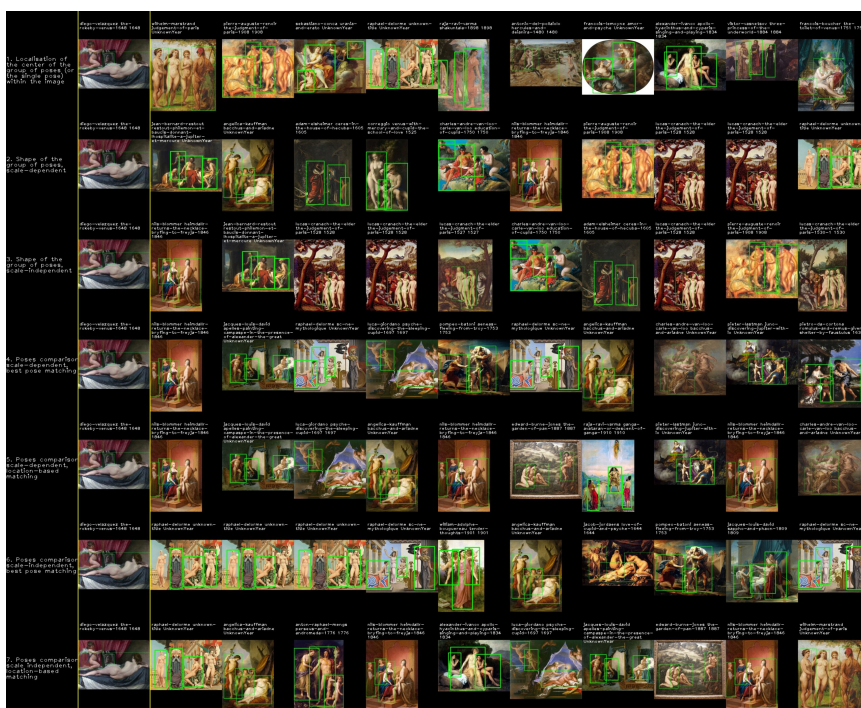


Fig. 14: Retrieval result for the 7 criteria for the group of 3 poses consisting of Venus, the Angel, and Venus' reflection in the mirror.



Fig. 15: Retrieval result for the combined criteria for the Venus alone.

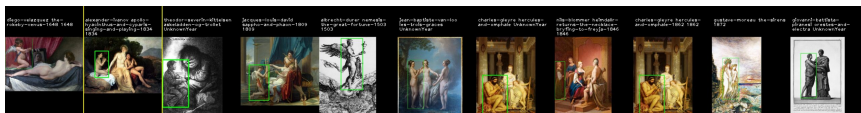


Fig. 16: Retrieval result for the combined criteria for the Angel alone.