

Understanding and modelling children's outdoor activities based on interdisciplinary research

Interdisciplinary Team



Boris Jidovtseff



Andora Vidal



Florence Pirard



Elodie Pools



Elodie Razy



Elodie Willemsen



Joelle Mottint



Anne-Françoise Dusart



Interdisciplinary Methods



Depth of the analysis

QUANTITATIVE ANALYSIS WITH ONLINE QUESTIONNAIRES
 Q1: Children practice and adults' perceptions on outdoor activities
 Q2 : Focus on Risky play and decision making process

2 to 18yo Children

TRANSVERSAL QUALITATIVE ANALYSIS
 1) Analysis of 9 settings + perception of professionals (monographies)
 2) Focus group with parents

Parents & Professionales

LONGITUDINAL ANTHROPOLOGICAL ANALYSIS
 1) 3 settings – 1 year longitudinal immersion
 2) 3 hollidays setting – 1 week longitudinal immersion

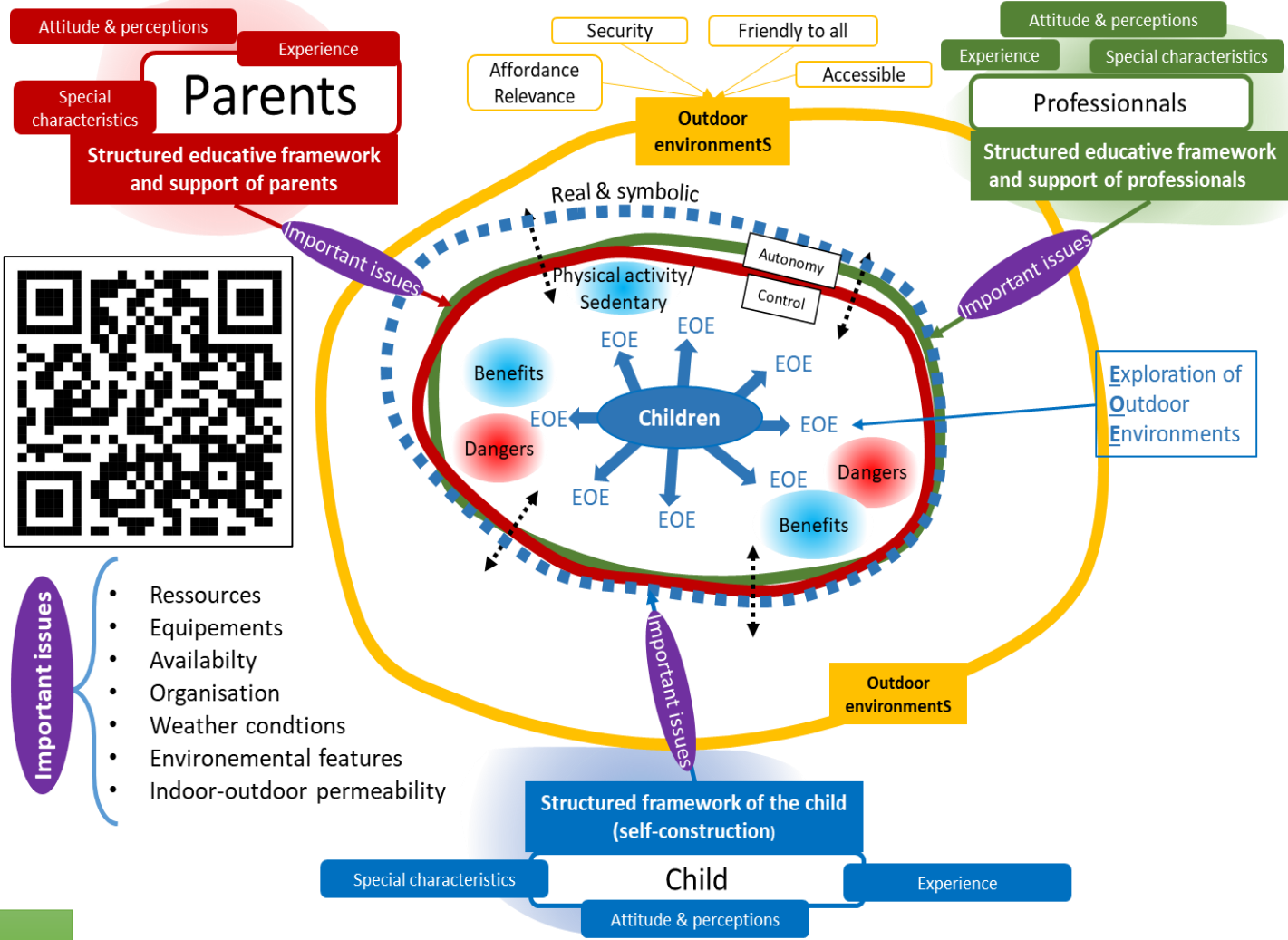
Representativity of the analysis

Pooling results for discussion, modelling and recommendations

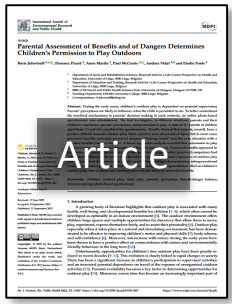
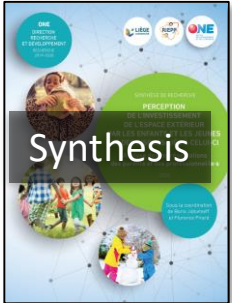
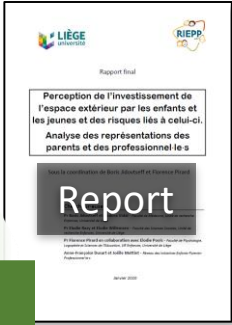


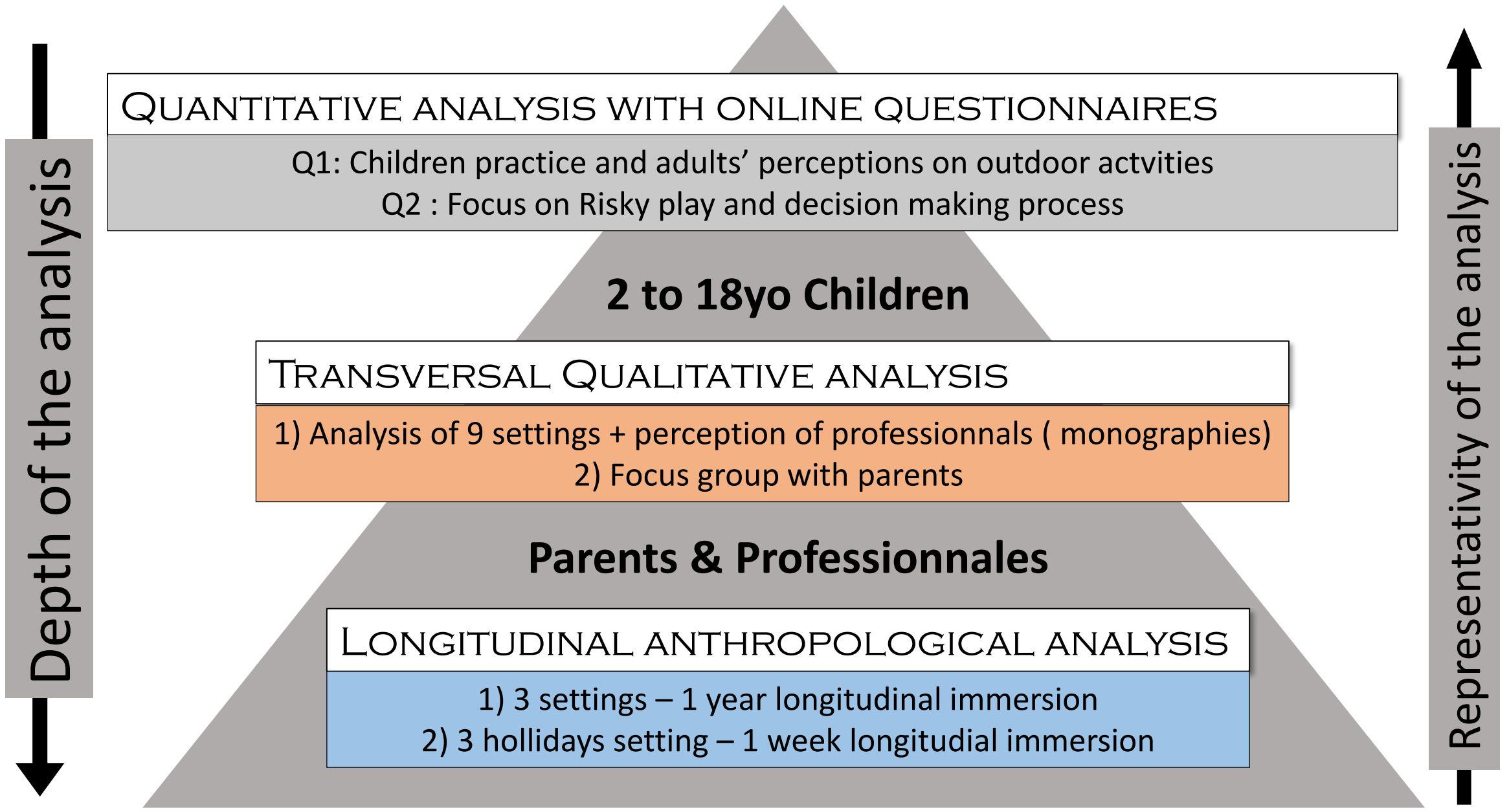
- Important issues**
- Ressources
 - Equipements
 - Availability
 - Organisation
 - Weather condions
 - Environemental features
 - Indoor-outdoor permeability

Results



Model of children outdoor activities and important issues





Depth of the analysis

Representativity of the analysis

QUANTITATIVE ANALYSIS WITH ONLINE QUESTIONNAIRES

- Q1: Children practice and adults' perceptions on outdoor activities
- Q2 : Focus on Risky play and decision making process

2 to 18yo Children

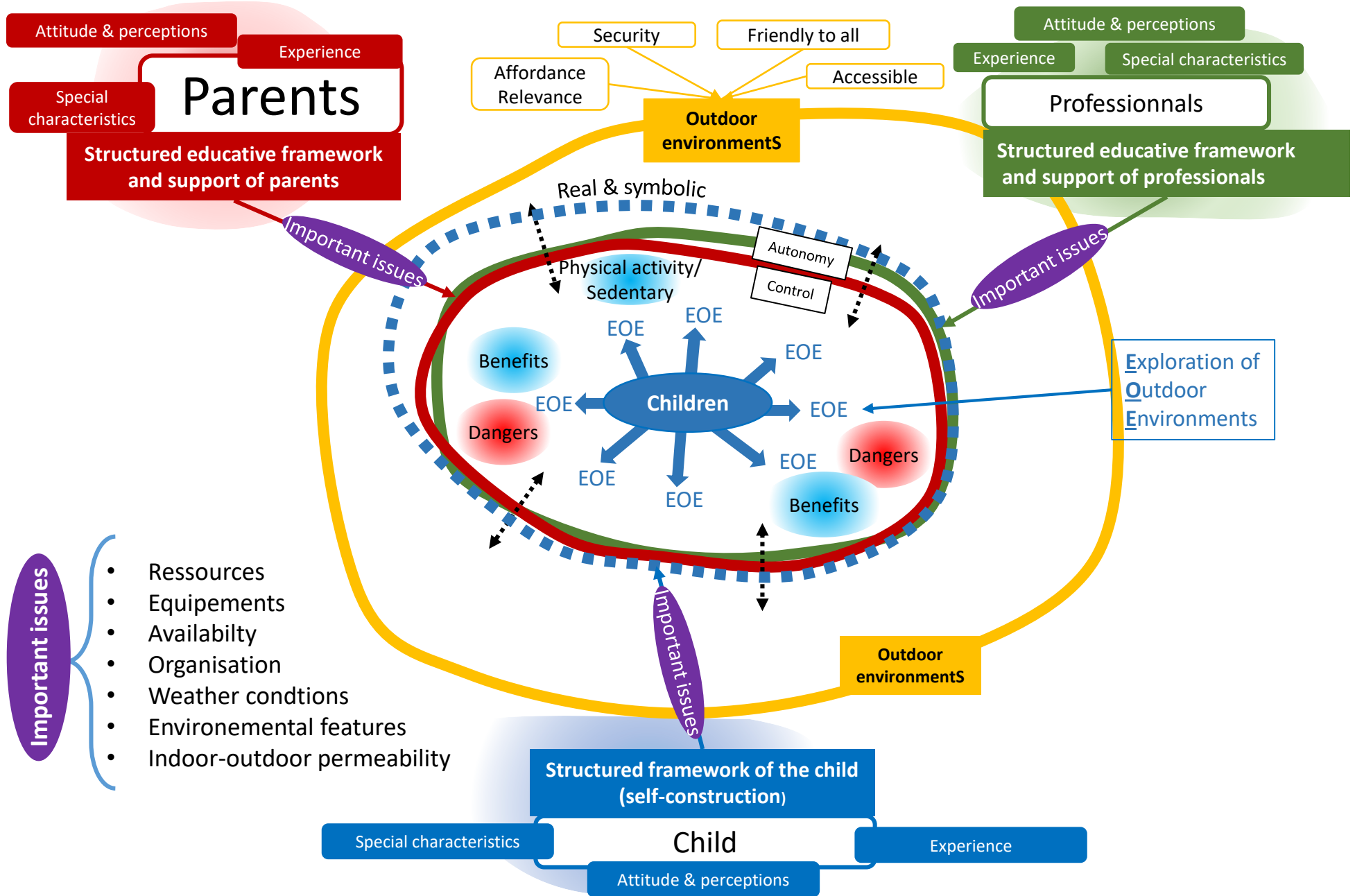
TRANSVERSAL QUALITATIVE ANALYSIS

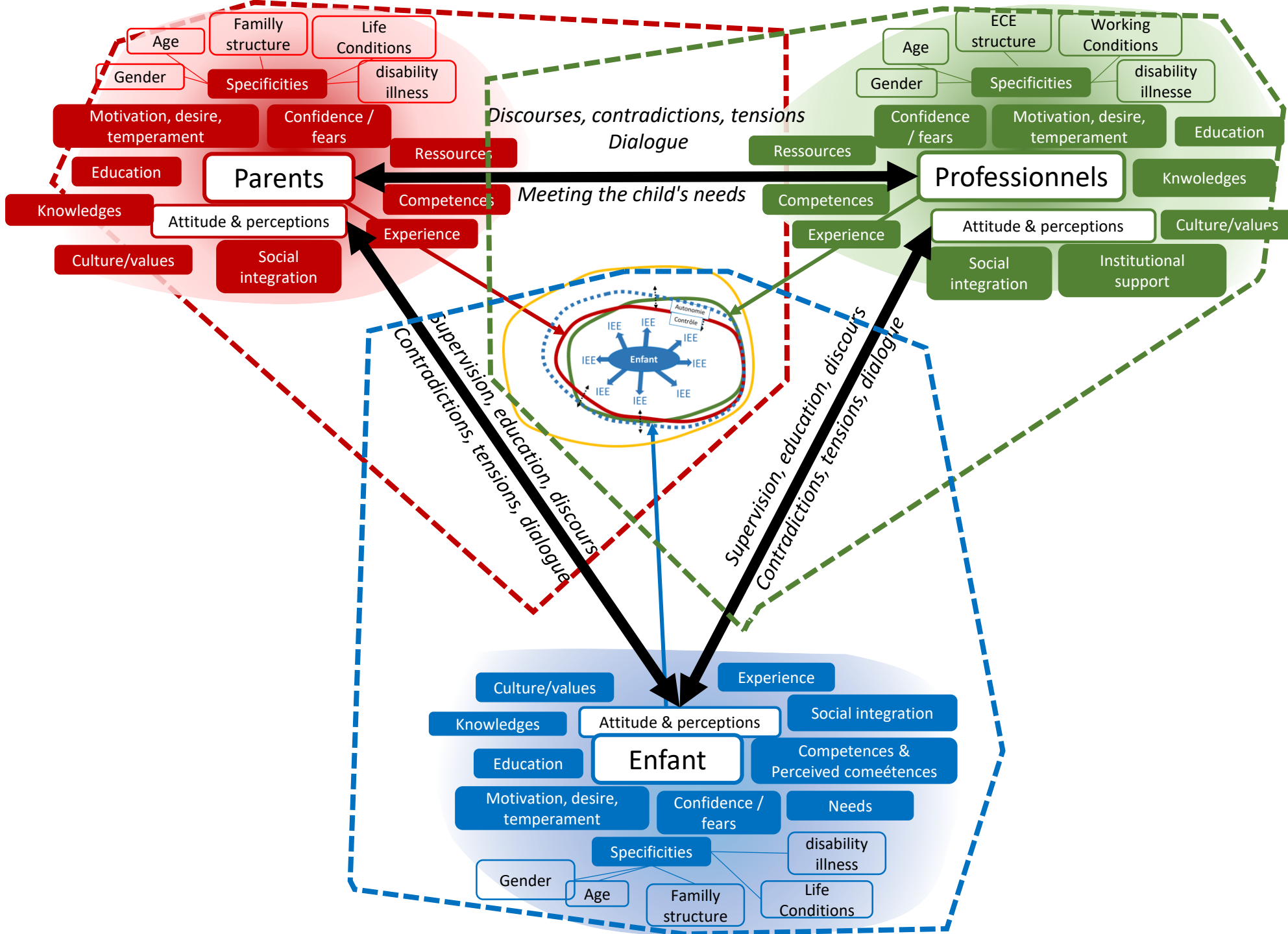
- 1) Analysis of 9 settings + perception of professionnels (monographies)
- 2) Focus group with parents

Parents & Professionnales

LONGITUDINAL ANTHROPOLOGICAL ANALYSIS

- 1) 3 settings – 1 year longitudinal immersion
- 2) 3 hollidays setting – 1 week longitudial immersion





Links to documents & publications

