

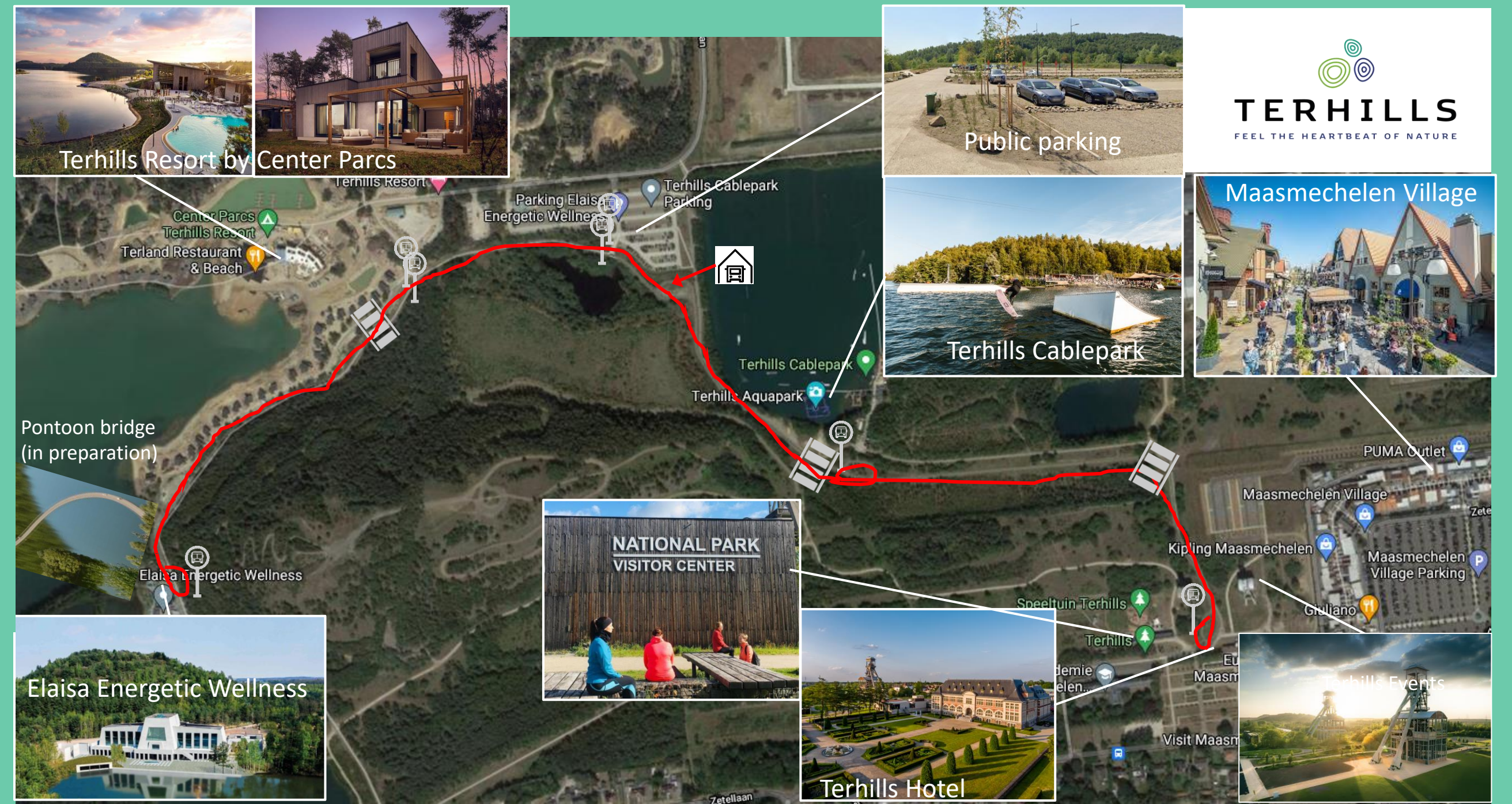
“Are you feeling safe on-board our autonomous shuttles?” Results from the user experience survey at Terhills, Belgium

Tim De Ceunynck - LRM *

Mario Cools - University of Liège, KULeuven, Hasselt University

The first fully autonomous (stewardless) transport system in Belgium

- Fleet of two EasyMile EZ10 shuttles during successfully completed pilot phase, to be expanded to a fleet of five shuttles by Q1 2024
- Connects various points of interest through five stops along a route of 4.5km
- Operations 365/365, 8h/day (pilot phase), 10 hours/day (Q1 2024)
- Frequency: every 10-15 min (pilot phase); every 5-10 min (Q1 2024)



Method

- User experience surveys
- Spontaneous responses and interviews at bus stops and in Terhills Resort
- Also non-users were interrogated on their reasons for non-usage
- Comparing responses of phase with on-board steward versus stewardless



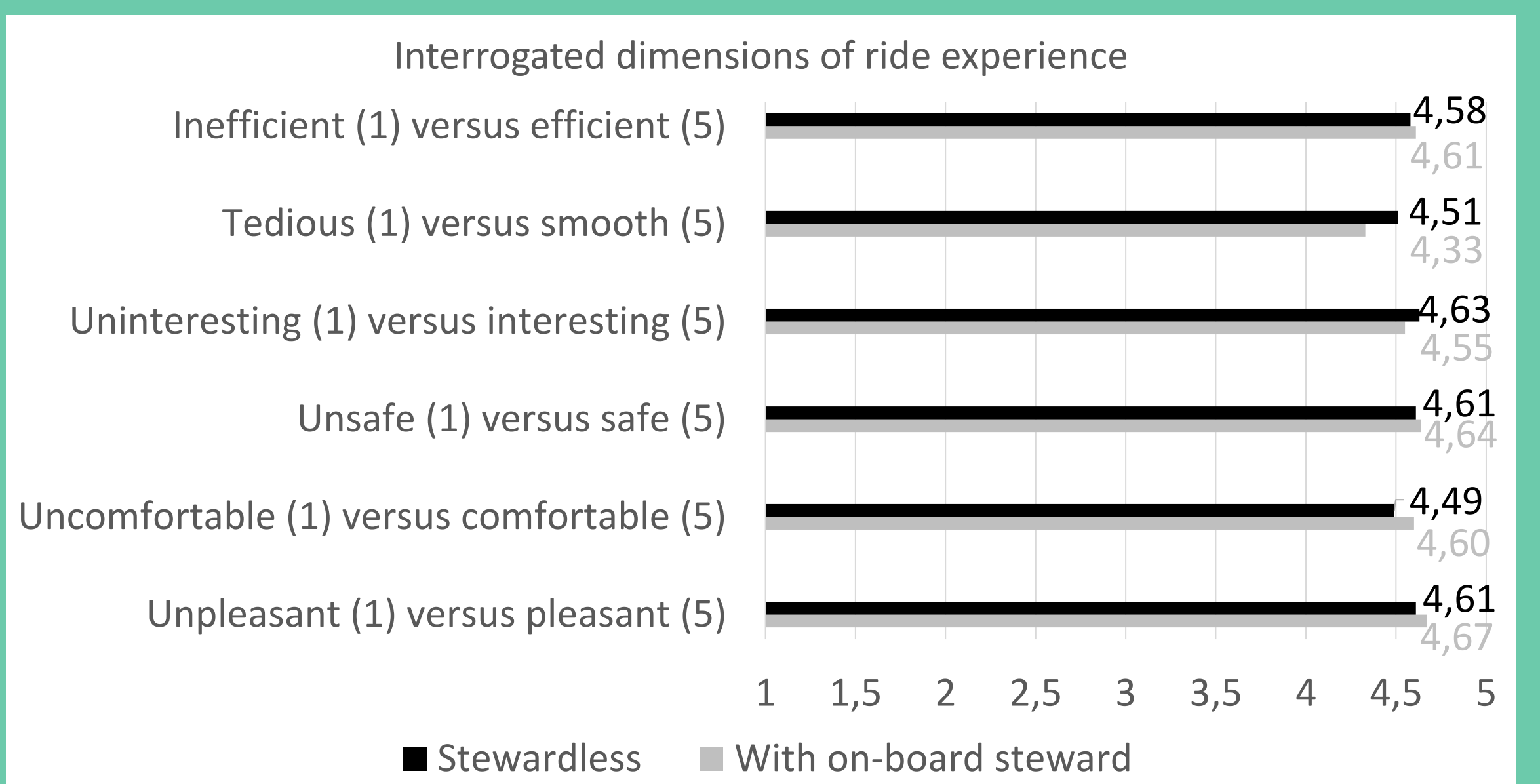
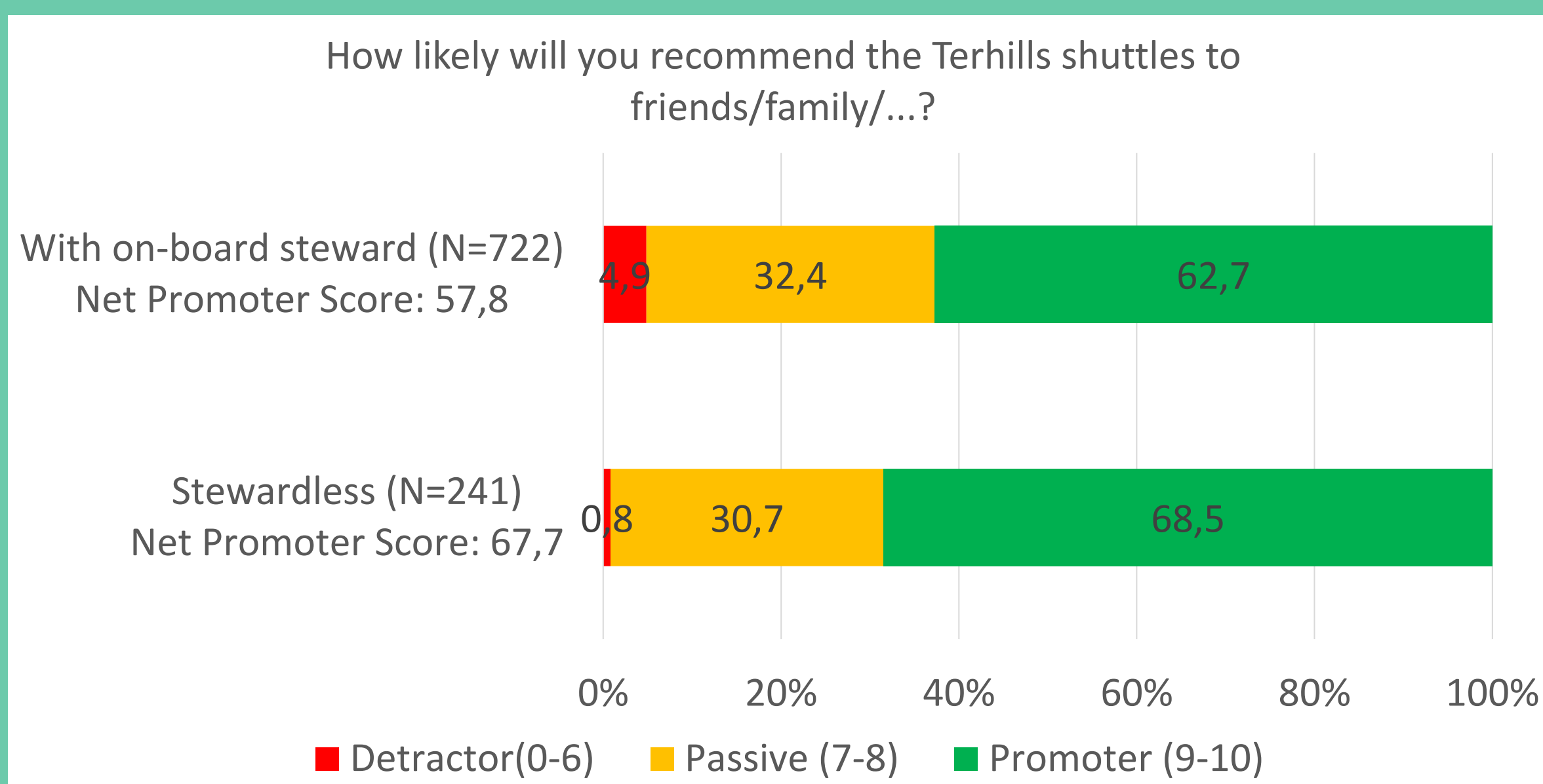
Let's work together!

- Terhills is a living lab for research about autonomous mobility
- Particularly human factor research and technology tests
- We are open to research cooperation

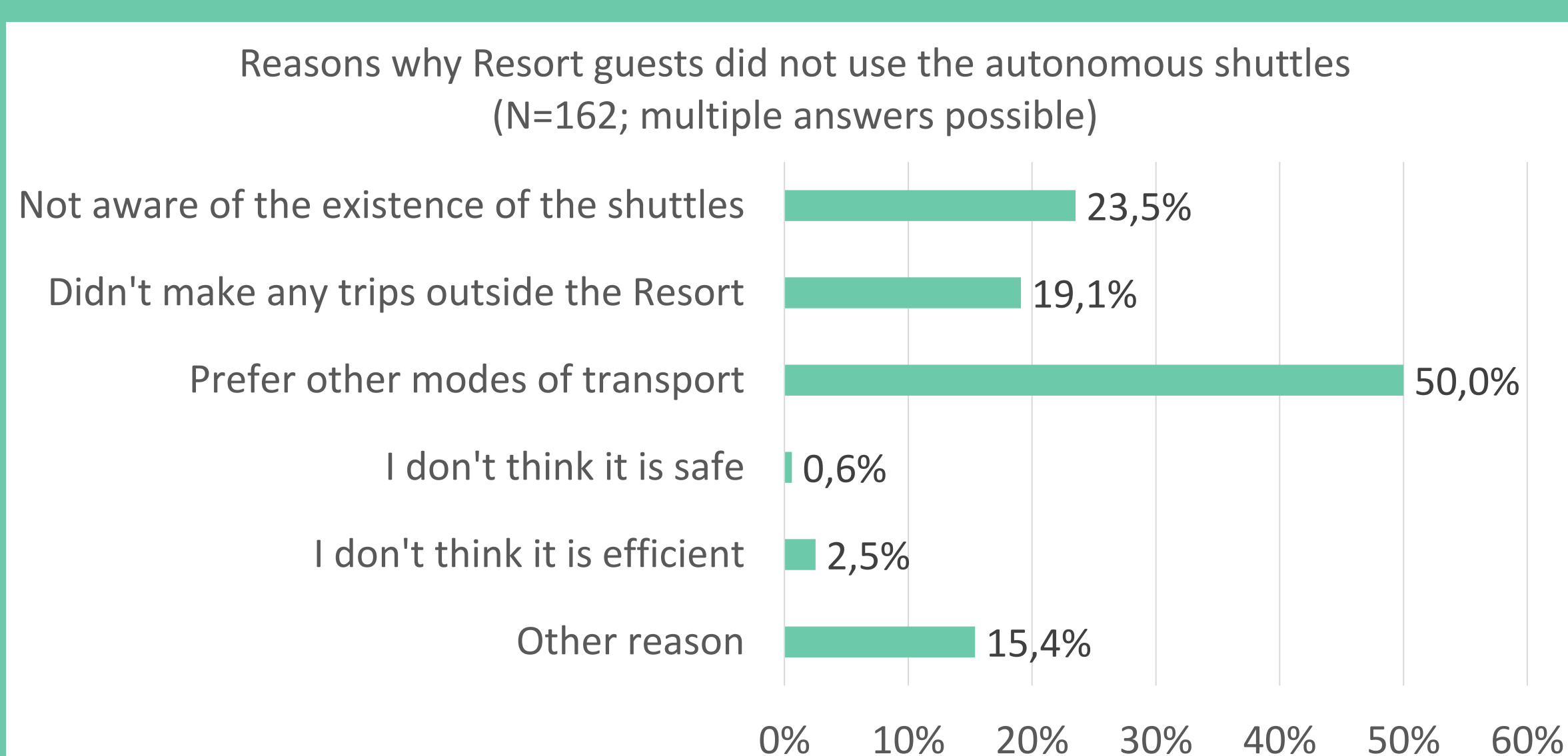


Results & conclusions

- User experience, expressed in Net Promoter Score (NPS) is very good
- NPS did not decrease after removing the on-board steward



- Safety is NOT an important reason for not using the shuttles



- Variables significantly affecting user experience (NPS):
 - Women more positive than men
 - Daily car users more positive than non-daily car users
 - Daily bicycle users more positive than non-daily bicycle users

Parameter	Estimate	S.E.	P-value
Intercept	8.109	0.09	<0.001
Gender	Female	0.189	0.077
	Male	0 (ref.)	
Car usage	Daily	0.652	0.091
	Less than daily	0 (ref.)	
Bicycle usage	Daily	0.262	0.093
	Less than daily	0 (ref.)	

