

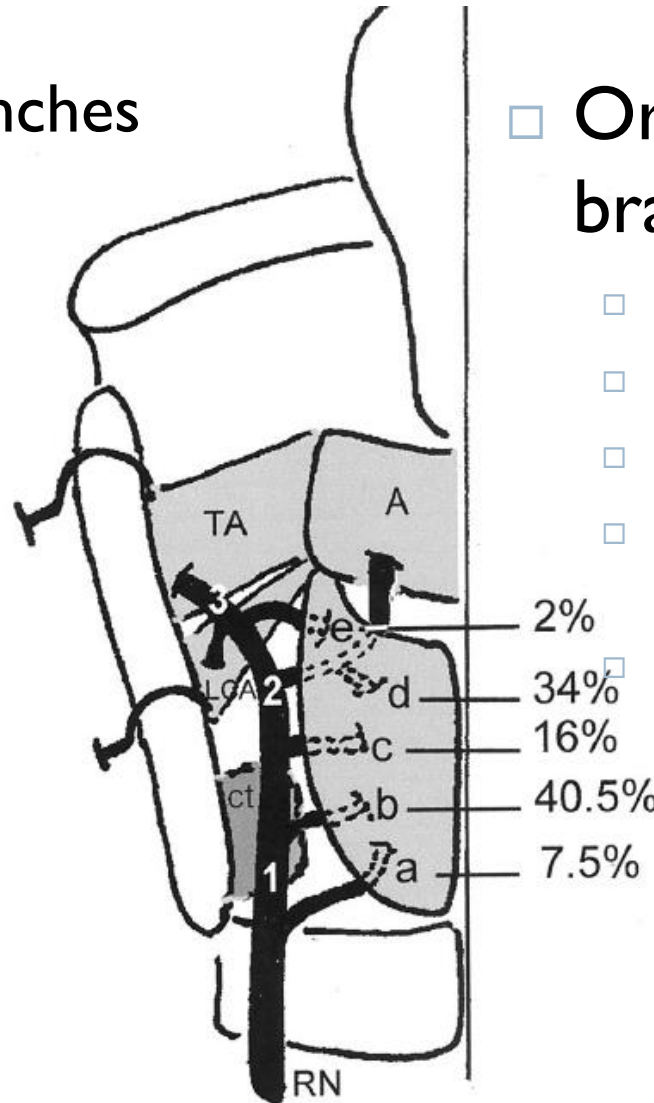


Micro-anatomy of the innervation of the PCA muscle

Inferior laryngeal Nerve : variability of the terminal branches

▶ Number of branches

- ▶ 1 branch=7.3%
- ▶ 2 branches=42.7%
- ▶ 3 branches=34%
- ▶ 4 branches=10.7%
- ▶ 5 branches=4.7%
- ▶ 6 branches: 0.6%

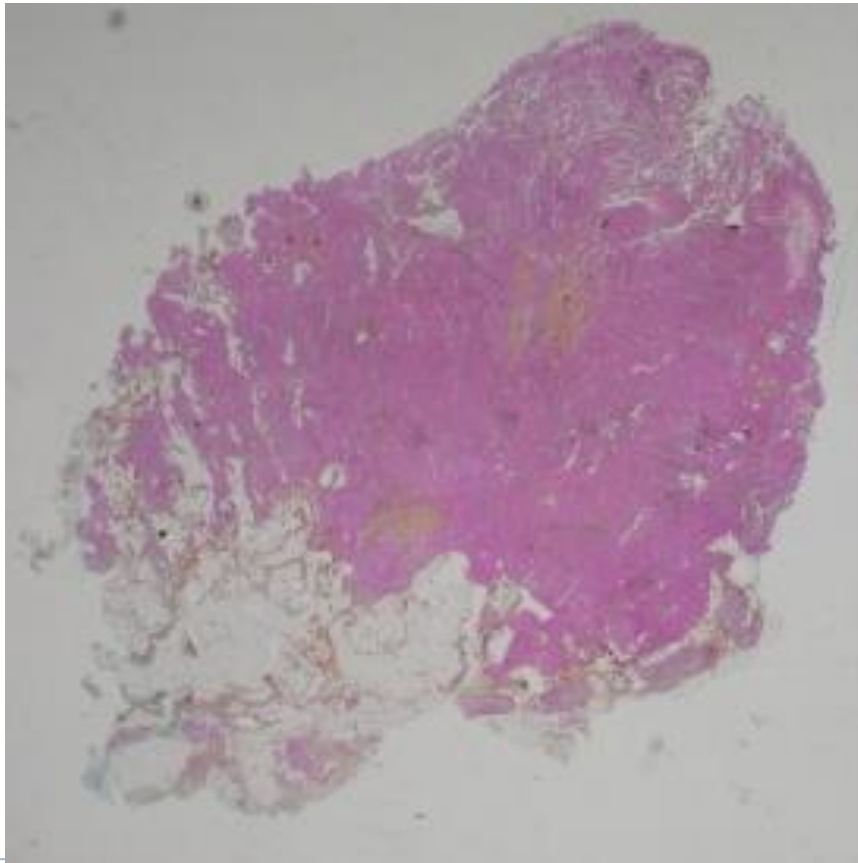


□ Origins of the PCA branches

- A: vertical segment under CT joint
- b: vertical segment behind CT joint
- c: vertical segment above CT joint
- d=genu, common origin with IA nerve branch
- e=oblique segment, between the IA and LCA branches

The line of the neuro-muscular joints

- ▶ HES staining



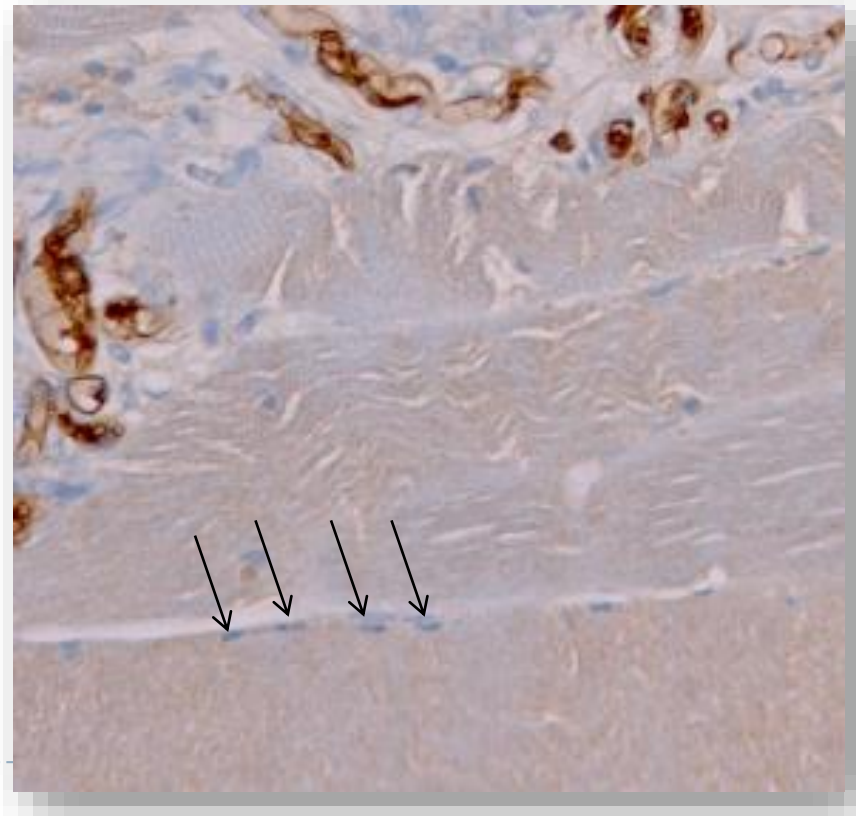
Multi-innervated fibers



Neurofilaments staining

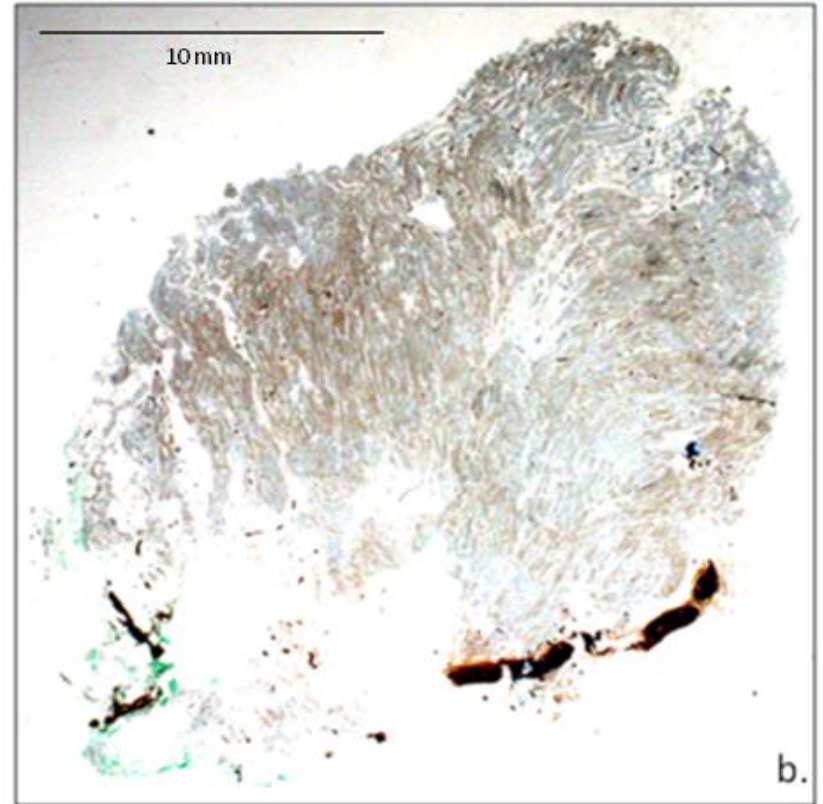
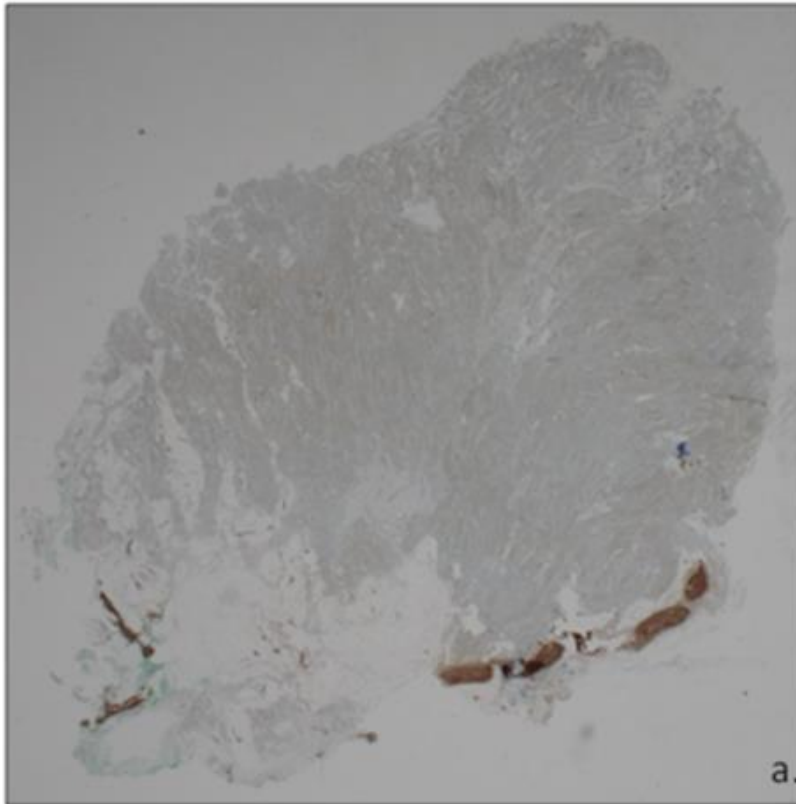


S100 β staining



The line of the neuro-muscular joints

- ▶ Anti-S100 β staining



Conclusions



- ▶ **Guide the technique for selective reinnervation**
 - ▶ Existence of an « end-plates line» in the PCA

- ▶ **Multi-innervation**
 - ▶ Physiological interest
 - ▶ Probably a factor of resistance to aging and neural degenerescence

