

# Gemmological study of the reliquary bust of Saint Lambert from the Liège Cathedral, Belgium

Yannick BRUNI<sup>1</sup>, Frédéric HATERT<sup>1</sup>, Philippe GEORGE<sup>2</sup>  
& David STRIVAY<sup>3</sup>

## Introduction

- This bust was produced by Hans von Reutlingen in the early XV<sup>th</sup> century.
- Represents Saint Lambert, a famous bishop of Tongres-Maastricht, murdered in Liège around the year 700.
- Relics, constituted by the St Lambert's skull, were inserted in the head of the reliquary.
- Late Gothic style with a wooden structure, covered with gold-coated silver.
- Bust also covered by gems, pearls and glass beads.

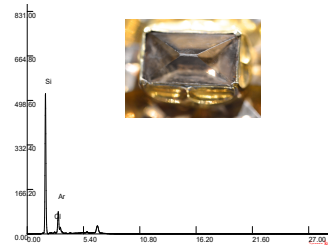
## Bust of Saint Lambert

159 cm

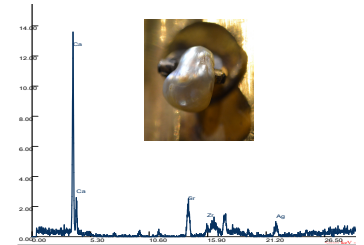


## XRF analyses

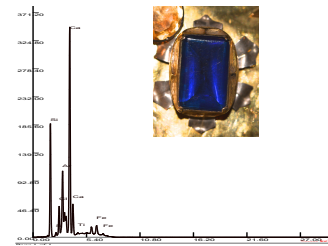
### Quartz



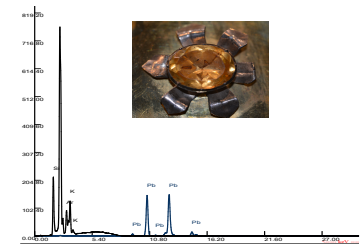
### Pearl



### Blue glass bead

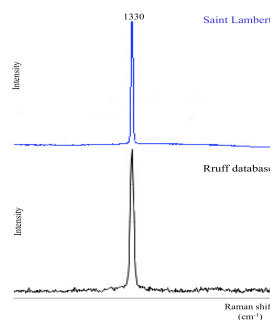


### Orange glass bead

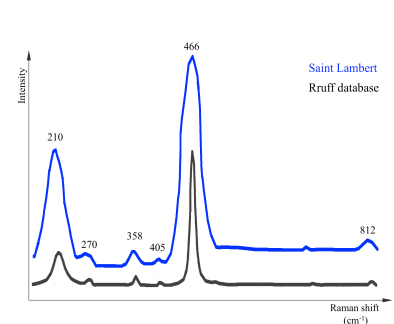


## Raman spectrometry

### Diamond

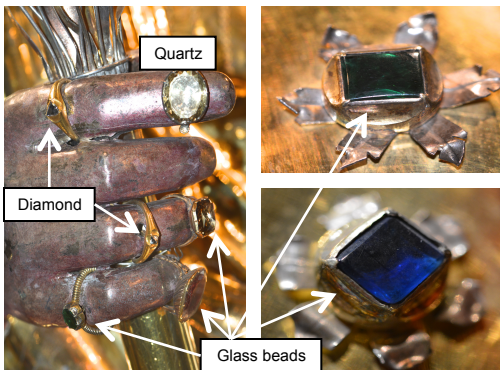


### Quartz



## Conclusions

- After Raman spectrometry and X-ray fluorescence spectrometry (XRF) analyses, the results confirm the identification of two diamonds, one hundred pearls, twenty turquoises, ten amethysts and twenty-six rock-crystals.
- Other samples are glass beads with green, orange, pink, red, brown, or blue colors.
- The filigrees contain Ag and Au, thus confirming that they are constituted by gold-coated silver.
- The cut of gemstones shows a simple rounded shapes for ancient glass beads, and numerous facets for the more recent.



1. Laboratory of Mineralogy, University of Liège, B-4000 Liège, Belgium.  
2. Liège Cathedral, Rue Bonne Fortune 6B, B-4000 Liège, Belgium.  
3. European center of archeometry, U.R. Art, Archeology and Heritage, Belgium