

# Biodiversity and ES initiatives in Wallonia



Laura Maebe ([laura.maebe@uliege.be](mailto:laura.maebe@uliege.be))  
Marc Dufrêne (Marc.Dufrene@uliege.be)

# Presentation outline

- The ongoing initiatives on biodiversity and ecosystem services (ES) in Wallonia
- Limitations of the current initiatives
- Areas of improvement
- Examples of successful initiatives

# Initiatives on biodiversity and ES

## Wal-ES

Walloon platform on ES

Aim: Development of decision support tools based on the ES approach



Les services écosystémiques en Wallonie

# Initiatives on biodiversity and ES

## Wal-ES

Walloon platform on ES

Aim: Development of decision support tools based on the ES approach

Developers: Public administration (DGO3 and SG) + Universities (Unamur and Uliège)



Les services écosystémiques en Wallonie

# Initiatives on biodiversity and ES

## Wal-ES

Walloon platform on ES

Aim: Development of decision support tools based on the ES approach

Developers: Public administration (DGO3 and SG) + Universities (Unamur and Uliège)

Funding: one year (2014-2015) (initially 3 years)



**Les services écosystémiques en Wallonie**



# Initiatives on biodiversity and ES

## Wal-ES

Walloon platform on ES

Aim: Development of decision support tools based on the ES approach

Developers: Public administration (DGO3 and SG) + Universities (Unamur and Uliège)

Funding: one year (2014-2015) (initially 3 years)

Achievement: common foundations for the development of sound decision support tools in Wallonia



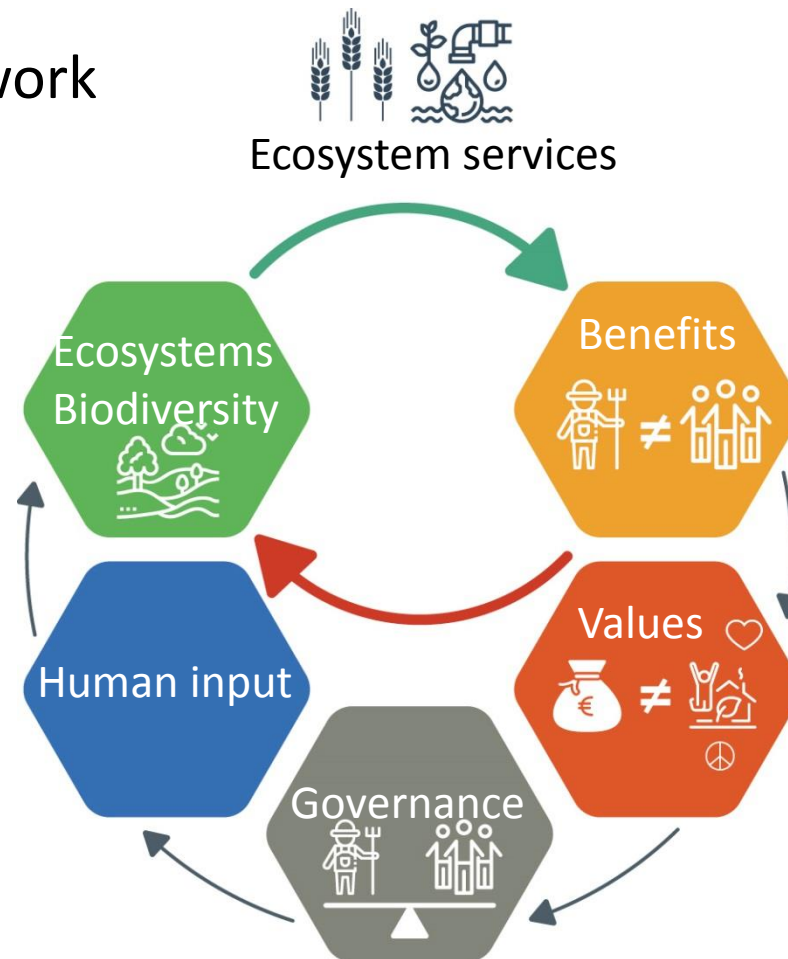
**Les services écosystémiques en Wallonie**

# Initiatives on biodiversity and ES

## Wal-ES

Achievement: common foundations for the development of sound decision support tools in Wallonia:

- Conceptual framework

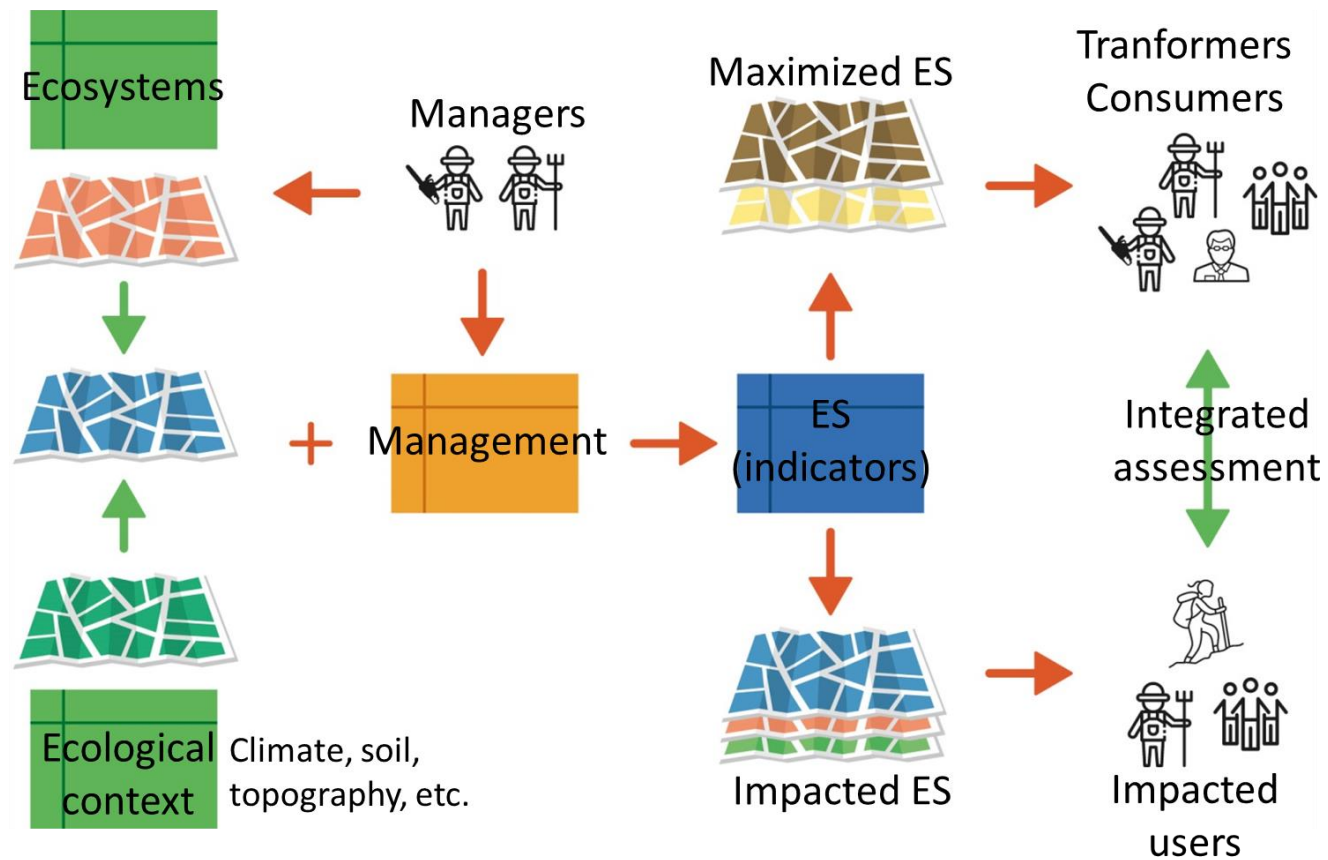


# Initiatives on biodiversity and ES

## Wal-ES

Achievement: common foundations for the development of sound decision support tools in Wallonia:

- Assessment framework





# Initiatives on biodiversity and ES

## Wal-ES

Achievement: common foundations for the development of sound decision support tools in Wallonia:

- Database (ES typology, indicators, data, etc.)
- Website (<http://wal-es.be>)

Accueil Le projet Wal-ES Ecosystèmes Services Evaluation Exemples Ressources

Vous êtes sur: Accueil

### Saviez-vous :

#### Que la plus grande entreprise européenne est la biodiversité !

"Il n'y en a pas d'autre qui produise tant de nourriture, assure tant de biens et services et nous offre autant de travail".  
Gerben-Jan Gerbrandy, 20 avril 2012, Rapporteur de la **Résolution " La biodiversité, notre assurance-vie et notre capital nature!"** , Parlement européen, Stratsbourg.



Qu'outre la production de nourriture, de fibres, de matériaux, d'énergie, de l'eau de consommation, ...



### Actualités



#### Offre de stage : Participation à l'évaluation sociale des services rendus par la forêt à la société humaine

Dans le cadre d'une thèse de doctorat, les services rendus par les forêts wallonnes sont évalués de manière intégrée. Cette évaluation comporte une composante sociale développée à l'aide d'approches participatives et d'outils de mesure de la fréquentation de la forêt.

L'étudiant(e) participera à l'élaboration de la méthodologie d'évaluation sociale ainsi qu'à sa mise en place sur un cas d'étude (la forêt communale de Sivry-Rance, province du Hainaut, Belgique) et à l'analyse des résultats.

06/09/2018

#### Offre de stage : Participation à l'évaluation économique des services rendus par la forêt à la société humaine

Dans le cadre d'une thèse de doctorat, les services écosystémiques et la résilience de forêts wallonnes sont évalués de manière intégrée. Cette évaluation comporte une

# Initiatives on biodiversity and ES

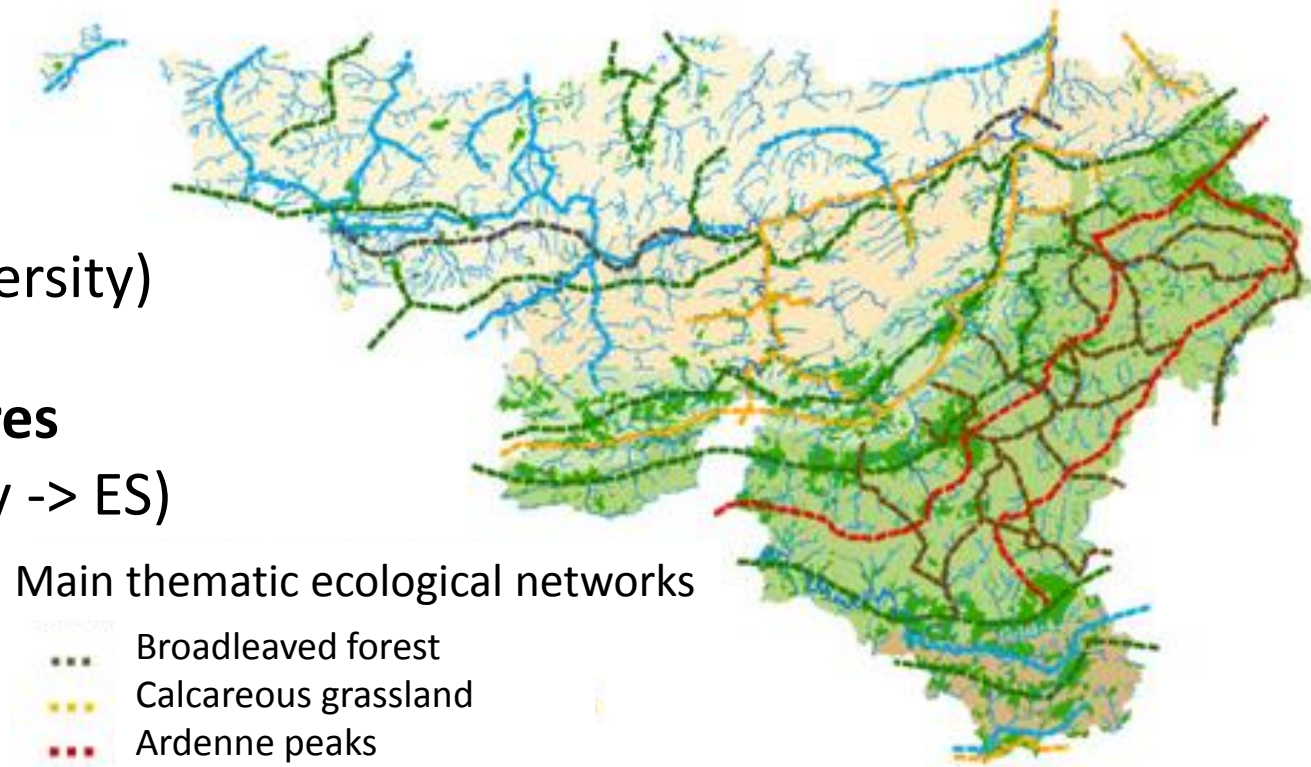
## Land use planning based on biodiversity and ES

SDT = Land Development Scheme

Long-term vision of land use planning in Wallonia

**Ecological network**  
(extraordinary biodiversity)

**+ Green infrastructures**  
(common biodiversity -> ES)



Main thematic ecological networks

- Broadleaved forest
- Calcareous grassland
- Ardenne peaks
- Ardenne high valley
- Flood plain
- Heap and brownfield

# Initiatives on biodiversity and ES

## Resolution on biodiversity and ES

To provide a rapid, transversal and ambitious response to the loss of biodiversity and ES in Wallonia based on several proposals:

1133 (2017-2018) — N° 1

1133 (2017-2018) — N° 1

PARLEMENT WALLON

SESSION 2017-2018

4 JUILLET 2018

### PROPOSITION DE RÉSOLUTION

visant à apporter une réponse urgente, transversale et d'envergure  
au déclin de la biodiversité et des richesses qu'elle procure à la Wallonie

déposée par

Mme Ryckmans, MM. Henry, Daele et Hazée

# Initiatives on biodiversity and ES

## Resolution on biodiversity and ES

To provide a rapid, transversal and ambitious response to the loss of biodiversity and ES in Wallonia based on several proposals:

- A better governance

1133 (2017-2018) — N° 1

1133 (2017-2018) — N° 1

PARLEMENT WALLON

SESSION 2017-2018

4 JUILLET 2018

### PROPOSITION DE RÉOLUTION

visant à apporter une réponse urgente, transversale et d'envergure  
au déclin de la biodiversité et des richesses qu'elle procure à la Wallonie

déposée par

Mme Ryckmans, MM. Henry, Daele et Hazée

# Initiatives on biodiversity and ES

## Resolution on biodiversity and ES

To provide a rapid, transversal and ambitious response to the loss of biodiversity and ES in Wallonia based on several proposals:

- A better governance
- Develop a Walloon strategy on Biodiversity

1133 (2017-2018) — N° 1

1133 (2017-2018) — N° 1

PARLEMENT WALLON

SESSION 2017-2018

4 JUILLET 2018

### PROPOSITION DE RÉSOLUTION

visant à apporter une réponse urgente, transversale et d'envergure  
au déclin de la biodiversité et des richesses qu'elle procure à la Wallonie

déposée par

Mme Ryckmans, MM. Henry, Daele et Hazée

# Initiatives on biodiversity and ES

## Resolution on biodiversity and ES

To provide a rapid, transversal and ambitious response to the loss of biodiversity and ES in Wallonia based on several proposals:

- A better governance
- Develop a Walloon strategy on Biodiversity
- Organise the transversality and the coordination at the political, administrative and institutional level

1133 (2017-2018) — N° 1

1133 (2017-2018) — N° 1

PARLEMENT WALLON

SESSION 2017-2018

4 JUILLET 2018

### PROPOSITION DE RÉOLUTION

visant à apporter une réponse urgente, transversale et d'envergure au déclin de la biodiversité et des richesses qu'elle procure à la Wallonie

déposée par

Mme Ryckmans, MM. Henry, Daele et Hazée



# Initiatives on biodiversity and ES

## Resolution on biodiversity and ES

To provide a rapid, transversal and ambitious response to the loss of biodiversity and ES in Wallonia based on several proposals:

- A better governance
- Develop a Walloon strategy on Biodiversity
- Organise the transversality and the coordination at the political, administrative and institutional level
- Make biodiversity a societal issue throughout Wallonia

1133 (2017-2018) — N° 1

1133 (2017-2018) — N° 1

PARLEMENT WALLON

SESSION 2017-2018

4 JUILLET 2018

### PROPOSITION DE RÉSOLUTION

visant à apporter une réponse urgente, transversale et d'envergure au déclin de la biodiversité et des richesses qu'elle procure à la Wallonie

déposée par

Mme Ryckmans, MM. Henry, Daele et Hazée

# Initiatives on biodiversity and ES

## Resolution on biodiversity and ES

To provide a rapid, transversal and ambitious response to the loss of biodiversity and ES in Wallonia based on several proposals:

- A better governance
- Develop a Walloon strategy on Biodiversity
- Organise the transversality and the coordination at the political, administrative and institutional level
- Make biodiversity a societal issue throughout Wallonia

1133 (2017-2018) — N° 1

1133 (2017-2018) — N° 1

PARLEMENT WALLON

Supported by various people/associations (ex.: Natagora, WWF, etc.) but the government?

visant à apporter une réponse urgente, transversale et d'envergure au déclin de la biodiversité et des richesses qu'elle procure à la Wallonie

déposée par

Mme Ryckmans, MM. Henry, Daele et Hazée

# Limitations and areas of improvement

## Limitations

- Lack of political/societal interest/involvement because of
  - Lack of knowledge
  - Lack of awareness
  - Lack of curiosity



# Limitations and areas of improvement

## Limitations

- Lack of political/societal interest/involvement because of
  - Lack of knowledge
  - Lack of awareness
  - Lack of curiosity
- Not clear governance on biodiversity and ES  
(several ministers have authority on these issues)



# Limitations and areas of improvement

## Limitations

- Lack of political/societal interest/involvement because of
  - Lack of knowledge
  - Lack of awareness
  - Lack of curiosity
- Not clear governance on biodiversity and ES (several ministers have authority on these issues)



=> lack of means (ex.: funding, human means) and lack of support

# Limitations and areas of improvement

## Limitations

- Lack of political/societal interest/involvement because of
  - Lack of knowledge
  - Lack of awareness
  - Lack of curiosity
- Not clear governance on biodiversity and ES (several ministers have authority on these issues)

=> lack of means (ex.: funding, person) and lack of support

## Areas of improvement

Raise awareness among politicians and society on biodiversity and ES

More means (money, people, etc.)





## Successful initiatives

### Integration of biodiversity and ES in land consolidation plan

Objective: develop tools to assess landscape multifunctionality in land consolidation plan

Two cases studies :

- Tool based on ES (Forville)

## Successful initiatives

### Integration of biodiversity and ES in land consolidation plan

- Tool based on ES

#### **Stakeholders :**

Local authorities, farmers, local initiatives & associations, volunteer citizens, etc.

1° Identifying 5 priority ES

# Successful initiatives

## Integration of biodiversity and ES in land consolidation plan

- Tool based on ES

### **Stakeholders :**

Local authorities, farmers, local initiatives & associations, volunteer citizens, etc.

1° Identifying 5 priority ES



Agricultural production

**Provisioning**

# Successful initiatives

## Integration of biodiversity and ES in land consolidation plan

- Tool based on ES

### Stakeholders :

Local authorities, farmers, local initiatives & associations, volunteer citizens, etc.

1° Identifying 5 priority ES



Agricultural production



Water protection



Erosion prevention



Preservation of habitats for biodiversity

**Provisioning**

**Regulating**

# Successful initiatives

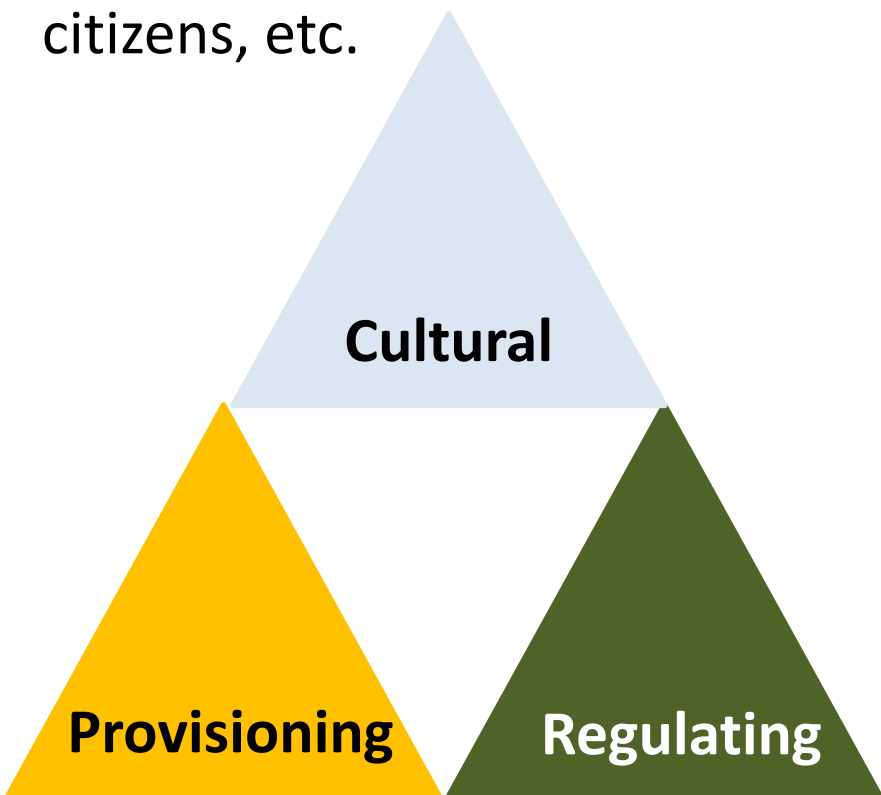
## Integration of biodiversity and ES in land consolidation plan

- Tool based on ES

### Stakeholders :

Local authorities, farmers, local initiatives & associations, volunteer citizens, etc.

1° Identifying 5 priority ES



Agricultural production



Water protection



Erosion prevention



Preservation of habitats for biodiversity

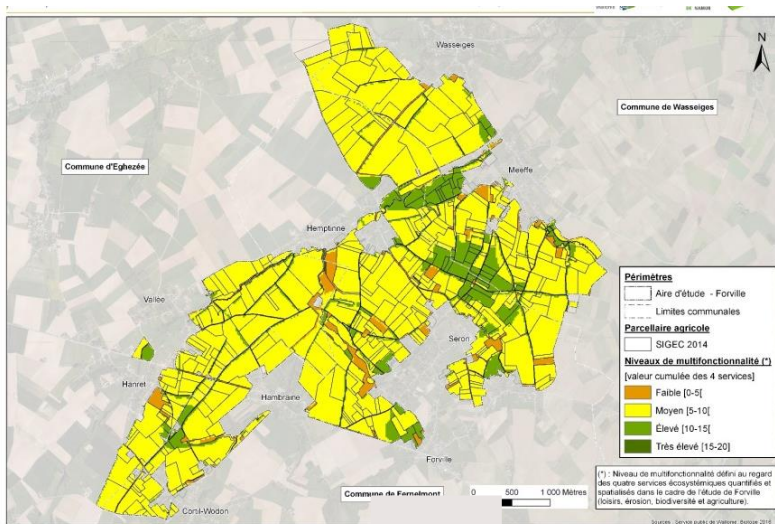


Leisure areas

# Successful initiatives

## Integration of biodiversity and ES in land consolidation plan

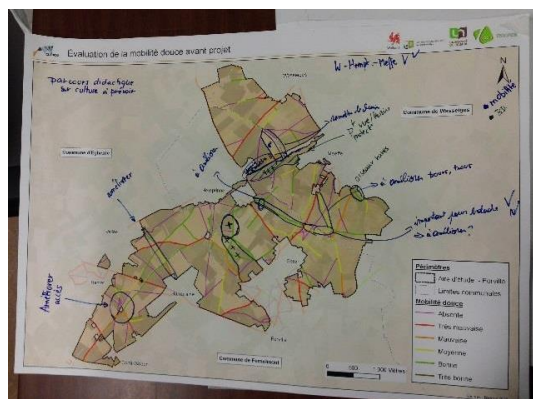
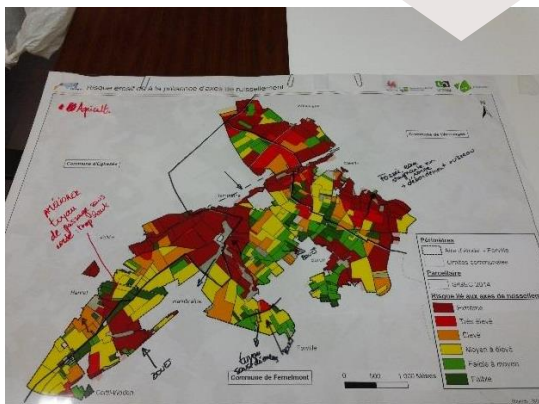
- Tool based on ES



1° Identifying 5 priority ES

2° Multifunctional diagnosis of land area

3° Co-construction of land-use plans

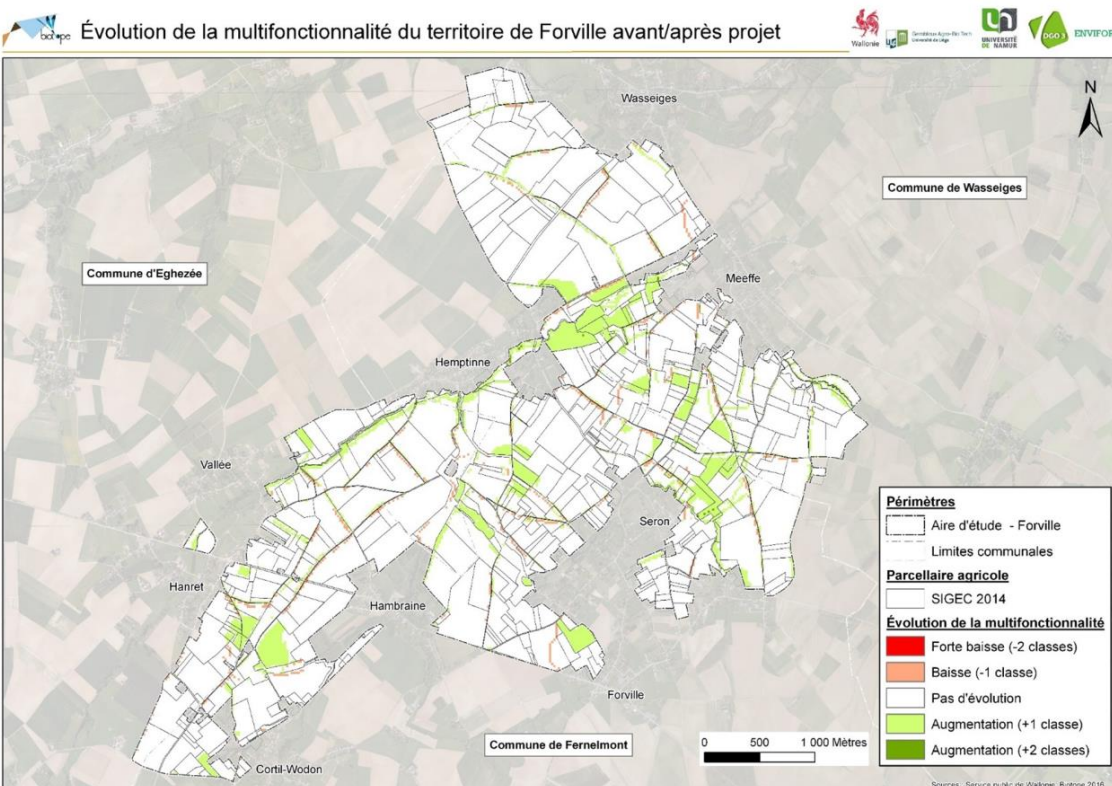




# Successful initiatives

## Integration of biodiversity and ES in land consolidation plan

- Tool based on ES



1° Identifying 5 priority ES

2° Multifunctional diagnosis of land area

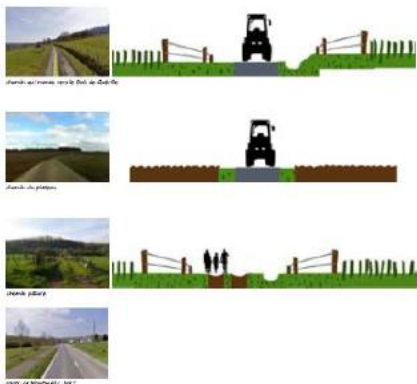
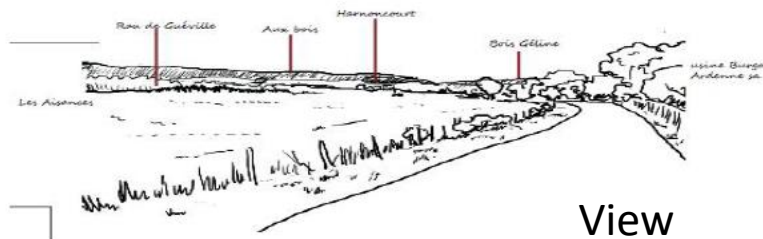
3° Co-construction of land-use plans

4° Impact evaluation over economic, socio-cultural and environmental components

# Successful initiatives

## Integration of biodiversity and ES in land consolidation plan

- Tool based on landscape (Rouvroy)



Source : M.SAUVILLERS

Perceived landscape

Felt landscape

Ideal landscape

Proposed landscape

Real landscape



# Successful initiatives

## Integration of biodiversity and ES in land consolidation plan

- Tool based on ES
- Tool based on landscape

### Strengths

- ✓ Communication throughout the project
- => Raising awareness**

## Successful initiatives

### Integration of biodiversity and ES in land consolidation plan

- Tool based on ES
- Tool based on landscape

#### Strengths

- ✓ Communication throughout the project

=> **Raising awareness**

- ✓ Large diversity of stakeholders  
+ citizen involvement

=> **Strengthening**

# Successful initiatives

## Integration of biodiversity and ES in land consolidation plan

- Tool based on ES
- Tool based on landscape

### Strengths

- ✓ Communication throughout the project

=> **Raising awareness**

- ✓ Large diversity of stakeholders  
+ citizen involvement

=> **Strengthening**

- ✓ Sharable tools

=> **Dissemination**



# Successful initiatives

## Integration of biodiversity and ES in land consolidation plan

- Tool based on ES
- Tool based on landscape

### Strengths

- ✓ Communication throughout the project

=> **Raising awareness**

- ✓ Large diversity of stakeholders  
+ citizen involvement

=> **Strengthening**

- ✓ Sharable tools

=> **Dissemination**

### Difficulties

X Required management

- Trained team to supervise  
all the project

- Involvement of local  
authorities

# Successful initiatives

## Integration of biodiversity and ES in land consolidation plan

- Tool based on ES
- Tool based on landscape

### Strengths

✓ Communication throughout the project

=> **Raising awareness**

✓ Large diversity of stakeholders  
+ citizen involvement

=> **Strengthening**

✓ Sharable tools

=> **Dissemination**

### Difficulties

X Required management

- Trained team to supervise all the project

- Involvement of local authorities

X Actors representation



Thanks for your attention



Any questions ?