

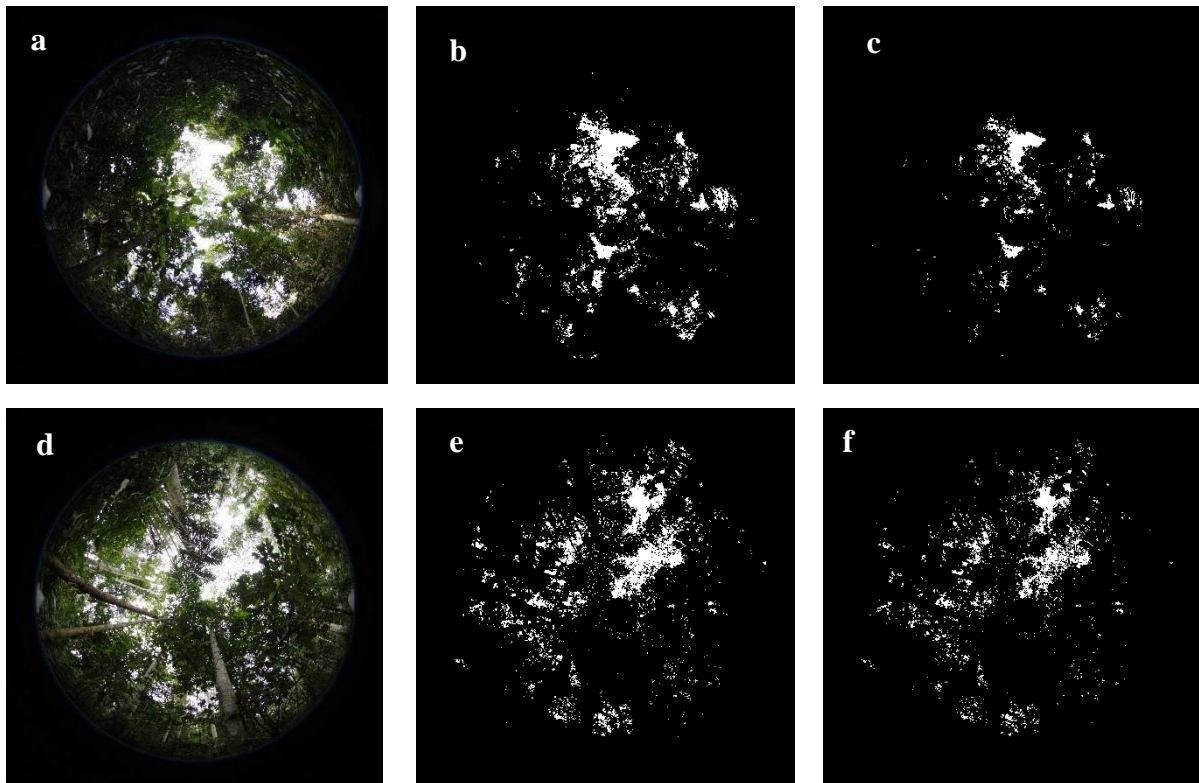
1 **Supplementary material A**

2 **Appendix 1: Assessment of canopy openness and leaf area index**

3 To assess canopy openness and leaf area index in the different plots, a camera with a *Fish Eye*
4 lens was used (Gond *et al.*, 2002). At five stations at least 20 metres apart and distributed in
5 the central part of each permanent one-hectare plot, five hemispherical photographs were taken
6 (Figure 1b). A total of 165 hemispheric photographs were taken. *Gap Light Analyzer* software
7 (version 2.0) was used to scan and analyse each image (Figure A1). Thresholding was used to
8 define the best contrast between the vegetation and sky parts of the image (Figure A1b, c, e
9 and f). In order to limit errors due to the experimenter's subjectivity in this operation, each
10 image had two different thresholds applied: (i) the first time with the minimum "acceptable"
11 threshold value, and (ii) the second time with the maximum "acceptable" threshold value (Figures
12 S1b and c). The processing consisted of the classification of the images, i.e. the separation of
13 the pixels into two classes: those representing vegetation ("sky-free" parts) and those representing
14 parts without vegetation ("sky-filled" parts).

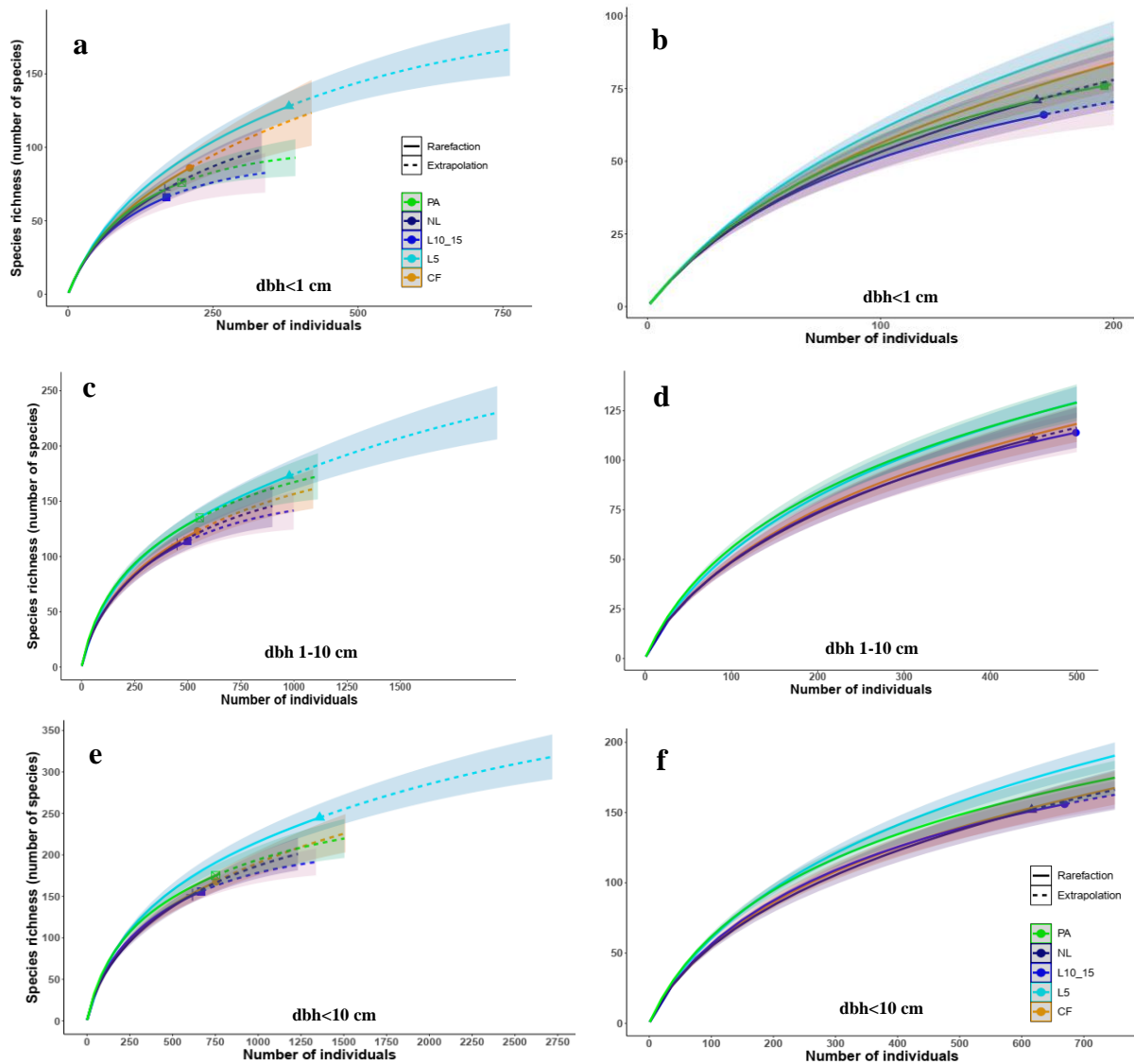
15 Since the one-hectare plot was taken as the sampling unit, the value for each parameter
16 of interest is an average of the 10 measurements made on the 10 different images (i.e. in each
17 plot, two levels of judgement \times five camera stations).

18
19

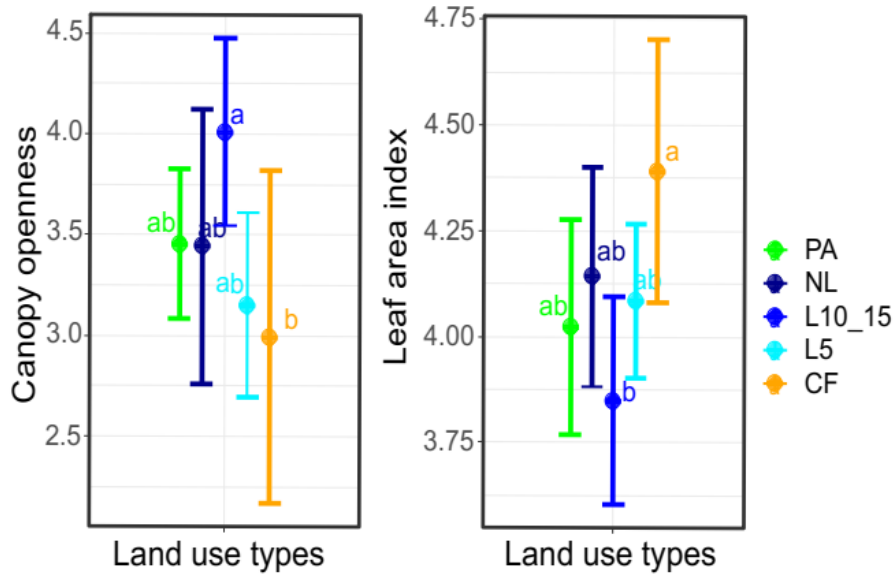


20 Figure A1: Hemispheric photographs taken at two separate stations ("a" and "d") with the threshold set
21 at different contrast levels (235 and 250 for images "b" and "e" and 240 and 255 for images
22 "c" and "f").

23

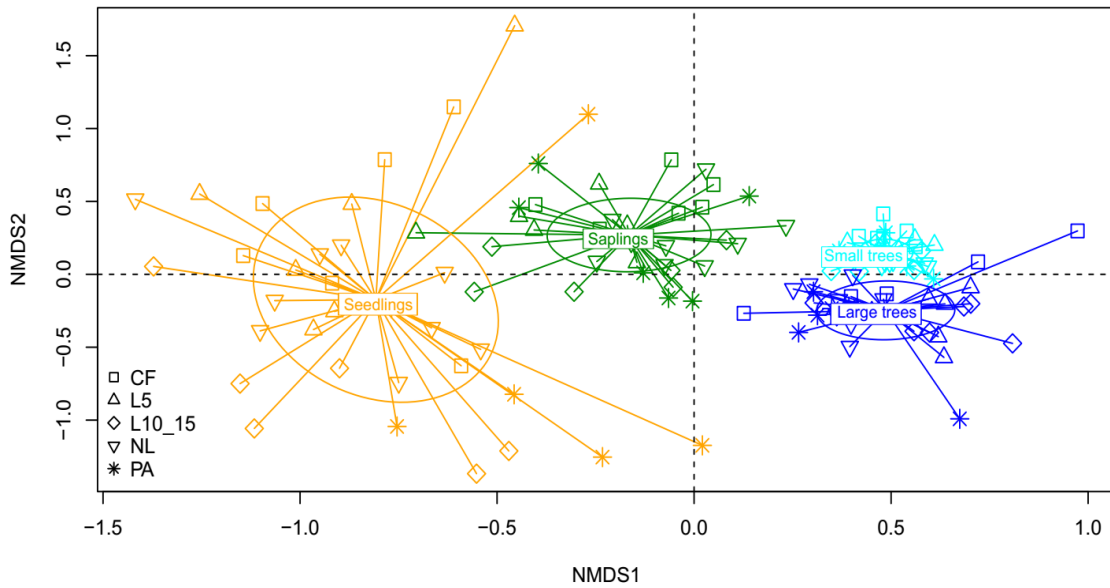


25 Figure S1: Rarefaction curves of observed species richness (solid lines) and extrapolation for the same
 26 number of unobserved individuals (dashed lines) showing the sampling effort within the different
 27 land use types, for all individuals surveyed within the different strata (a = dbh < 1 cm, c = dbh
 28 1-10 cm) and for both strata taken together (e = dbh < 10 cm), then for a reduced number of
 29 randomly selected individuals within the different strata (b = dbh < 1 cm, d = dbh 1-10 cm, f =
 30 dbh < 10 cm). PA: Protected area; NL: Never logged forest or logged more than 30 years before
 31 inventory; L10_15: Forest logged 10-15 years before inventory; L5: Forest logged less than 5
 32 years before inventory; CF: Community forest logged less than 7-10 years before inventory.



33
 34 Figure S2: Variation in canopy openness index and leaf area index with land use types. PA: Protected
 35 area; NL: never logged forest or logged more than 30 years before inventory; L10_15: forest
 36 logged 10-15 years before inventory; L5: forest logged less than 5 years before inventory; CF:
 37 community forest logged less than 7-10 years before inventory. The Tukey test (results represented
 38 by letters “a” and “b”) was used to assess significantly different mean values for each parameter
 39 among the different land use types.

40



41
 42 Figure S3: NMDS showing the species composition of the seedling strata, sapling strata, small tree strata
 43 and large tree strata at the plot level. PA: Protected area; NL: Never logged forest or logged
 44 more than 30 years before inventory; L10_15: Forest logged 10-15 years before inventory; L5:
 45 Forest logged less than 5 years before inventory; CF: Community forest logged less than 7-10
 46 years before inventory.

47

48

Table S1: Species found in the understory vegetation strata of different land use types. PA: Protected area; NL: Never logged forest or logged more than 30 years before inventory; L10_15: Forest logged 10-15 years before inventory; L5: Forest logged less than 5 years before inventory; CF: Community forest logged less than 7-10 years before inventory.

ID	Species	Families	Life forms	Regeneration guilds	Dispersal syndromes	dbh <1 cm											dbh 1-10 cm											
						Relative frequency					IndVal						Relative frequency					IndVal						
						PA	NL	L10-15	L5	CF	PA	NL	L10-15	L5	CF	<i>p</i>	PA	NL	L10-15	L5	CF	PA	NL	L10-15	L5	CF	<i>p</i>	
1	<i>Acanthus montanus</i> (Nees) T. Anderson	Acanthaceae	Herb	SB	Acanthocore	0	0	0	0.111	0	0	0	0	0.111	0	1	/	/	/	/	/	/	/	/	/	/	/	/
2	<i>Adenopodia scelerata</i> (A. Chev.) Brenan	Fabaceae	Liana	P	Ballochore	0.167	0.167	0	0.111	0	0.063	0.063	0	0.028	0	0.841	0	0	0	0.111	0	0	0	0.111	0	0	1	
3	<i>Aframomum daniellii</i> (Hook. f.) K. Schum.	Zingiberaceae	Herb	P	Sarcochore	0	0	0.167	0	0	0	0	0.167	0	0	0.747	/	/	/	/	/	/	/	/	/	/	/	
4	<i>Aframomum</i> sp.	Zingiberaceae	Herb	P	Sarcochore	0	0	0.167	0	0	0	0	0.167	0	0	0.701	/	/	/	/	/	/	/	/	/	/	/	
5	<i>Afrostryax lepidophyllus</i> Mildbr.	Huaceae	Tree	SB	Sarcochore	0	0	0	0.111	0.5	0	0	0	0.02	0.409	0.024	0	0.333	0.5	0.778	0.167	0	0.094	0.189	0.208	0.012	0.489	
6	<i>Azelia</i> sp.	Fabaceae	Tree	NPLD	Sarcochore	0.167	0	0	0.111	0	0.1	0	0	0.044	0	0.58	0	0	0	0.444	0	0	0	0	0.444	0	0.007	
7	<i>Agelaea pentagyna</i> (Lam.) Baill.	Connaraceae	Liana	SB	Sarcochore	0	0.167	0	0.111	0	0	0.1	0	0.044	0	0.591	0	0	0.167	0	0	0	0	0.167	0	0	0.697	
8	<i>Aidia micrantha</i> (K. Schum.) F. White	Rubiaceae	Tree	SB	Sarcochore	0	0	0	0	0.167	0	0	0	0	0.167	0.728	0.167	0.333	0.5	0.111	0.5	0.011	0.045	0.136	0.005	0.239	0.241	
9	<i>Aidia ochroleuca</i> (K. Schum.) E.M.A. Petit	Rubiaceae	Tree	SB	Sarcochore	/	/	/	/	/	/	/	/	/	/	/	0	0	0	0	0.167	0	0	0	0	0.167	0.745	
10	<i>Aidia</i> sp.	Rubiaceae	Tree	SB	Sarcochore	/	/	/	/	/	/	/	/	/	/	/	0	0	0	0.111	0	0	0	0	0.111	0	1	
11	<i>Airyantha schweinfurthii</i> (Taub.) Brummitt	Fabaceae	Shrub	P	Sarcochore	0	0	0	0.111	0	0	0	0	0.111	0	1	/	/	/	/	/	/	/	/	/	/	/	
12	<i>Albizia adianthifolia</i> (Schumach.) W. Wight	Fabaceae	Tree	P	Pterochore	0.167	0	0	0.111	0.167	0.031	0	0	0.028	0.094	0.609	0	0	0	0.111	0.333	0	0	0	0.028	0.25	0.134	
13	<i>Albizia glaberrima</i> (Schumach. & Thonn.) Benth.	Fabaceae	Tree	P	Pterochore	0	0	0	0	0.167	0	0	0	0	0.167	0.736	/	/	/	/	/	/	/	/	/	/	/	
14	<i>Albizia laurentii</i> De Wild.	Fabaceae	Tree	P	Pterochore	/	/	/	/	/	/	/	/	/	/	/	0	0	0	0	0.167	0	0	0	0	0.167	0.71	
15	<i>Albizia</i> sp.	Fabaceae	Tree	P	Pterochore	0	0	0	0.111	0.167	0	0	0	0.044	0.1	0.58	/	/	/	/	/	/	/	/	/	/	/	
16	<i>Albizia zygia</i> (DC.) J. F. Macbr.	Fabaceae	Tree	P	Pterochore	0	0	0	0	0.167	0	0	0	0	0.167	0.735	0	0	0	0.111	0	0	0	0	0.111	0	1	
17	<i>Allanblackia kisonghii</i> Vermeesen	Clusiaceae	Tree	SB	Sarcochore	/	/	/	/	/	/	/	/	/	/	/	0.167	0	0	0.111	0.333	0.025	0	0	0.044	0.15	0.396	
18	<i>Alstonia boonei</i> De Wild.	Apocynaceae	Tree	P	Pogonochore	/	/	/	/	/	/	/	/	/	/	/	0	0	0.333	0	0	0	0	0.333	0	0	0.12	
19	<i>Amphimas ferrugineus</i> Pierre ex Pellegr.	Fabaceae	Tree	NPLD	Pterochore	/	/	/	/	/	/	/	/	/	/	/	0	0	0	0	0.167	0	0	0	0	0.167	0.73	
20	<i>Angylocalyx pynaertii</i> De Wild.	Fabaceae	Tree	SB	Sarcochore	0	0	0	0.111	0.167	0	0	0	0.063	0.071	1	0.167	0	0.333	0	0	0.111	0	0.111	0	0	0.883	
21	<i>Angylocalyx</i> sp.	Fabaceae	Tree	SB	Sarcochore	/	/	/	/	/	/	/	/	/	/	/	0	0	0	0.222	0.333	0	0	0	0.105	0.177	0.389	
22	<i>Anisotes macrophyllus</i> (Lindau) Heine	Acanthaceae	Herb	SB	Acanthocore	0.167	0.333	0.333	0	0.167	0.014	0.167	0.111	0	0.014	0.494	0	0.167	0	0	0	0	0.167	0	0	0	0.742	
23	<i>Annickia affinis</i> (Exell) Versteegh & Sosef	Annonaceae	Tree	SB	Sarcochore	0	0	0	0.111	0.167	0	0	0	0.044	0.1	0.593	0.5	0.333	0.5	0.444	0.167	0.12	0.04	0.15	0.124	0.01	0.759	
24	<i>Anonidium mannii</i> (Oliv.) Engl. & Diels	Annonaceae	Tree	SB	Barochore	/	/	/	/	/	/	/	/	/	/	/	0.667	0.5	0.333	0.667	0.667	0.09	0.101	0.034	0.15	0.225	0.564	

25	<i>Anthonotha macrophylla</i> P. Beauv.	Fabaceae	Tree	SB	Ballochore	/	/	/	/	/	/	/	/	/	/	/	0.5	0.167	0.667	0.444	0.333	0.107	0.009	0.143	0.111	0.089	0.869	
26	<i>Antidesma</i> sp.	Phyllanthaceae	Shrub	SB	Sarcochore	0.167	0	0	0	0	0.167	0	0	0	0	0.741	/	/	/	/	/	/	/	/	/	/	/	
27	<i>Antidesma venosum</i> E. Mey. ex Tul.	Phyllanthaceae	Tree	SB	Sarcochore	/	/	/	/	/	/	/	/	/	/	/	0	0	0	0	0.167	0	0	0	0	0.167	0.725	
28	<i>Antrocaryon klaineianum</i> Pierre	Anacardiaceae	Tree	P	Sarcochore	/	/	/	/	/	/	/	/	/	/	/	0	0	0.167	0	0	0	0	0.167	0	0	0.743	
29	<i>Aptandra zenkeri</i> Engl.	Oleaceae	Shrub	SB	Sarcochore	0	0	0	0	0.167	0	0	0	0	0.167	0.691	/	/	/	/	/	/	/	/	/	/	/	
30	<i>Artabotrys</i> sp.	Annonaceae	Liana	SB	Sarcochore	0	0	0	0.111	0	0	0	0	0.111	0	1	0	0	0.167	0	0	0	0	0.167	0	0	0.729	
31	<i>Asplenium</i> sp.	Aspleniaceae	Herb	SB	Sclerochore	0.167	0	0	0	0	0.167	0	0	0	0	0.742	/	/	/	/	/	/	/	/	/	/	/	
32	<i>Asystasia gangetica</i> (L.) T. Anderson	Acanthaceae	Herb	SB	Acanthochore	0.167	0	0	0	0	0.167	0	0	0	0	0.729	/	/	/	/	/	/	/	/	/	/	/	
33	<i>Aulacocalyx jasmiflora</i> Hook. f.	Rubiaceae	Shrub	SB	Sarcochore	0	0	0	0.111	0	0	0	0	0.111	0	1	/	/	/	/	/	/	/	/	/	/	/	
34	<i>Baillonella toxisperma</i> Pierre	Sapotaceae	Tree	NPLD	Sarcochore	/	/	/	/	/	/	/	/	/	/	/	0	0.167	0	0	0	0	0	0.167	0	0	0.706	
35	<i>Baïsea</i> sp.	Apocynaceae	Liana	SB	Sarcochore	0	0	0	0.111	0	0	0	0	0.111	0	1	/	/	/	/	/	/	/	/	/	/	/	
36	<i>Barteria fistulosa</i> Mast.	Passifloraceae	Tree	P	Sarcochore	/	/	/	/	/	/	/	/	/	/	/	0	0	0	0.111	0.167	0	0	0	0	0.044	0.1	0.571
37	<i>Begonia</i> sp.	Begoniaceae	Herb	SB	Sarcochore	0	0	0.167	0	0	0	0	0.167	0	0	0.737	/	/	/	/	/	/	/	/	/	/	/	
38	<i>Beilschmiedia obscura</i> (Stapf) Engl. ex A. Chev.	Lauraceae	Tree	SB	Sarcochore	/	/	/	/	/	/	/	/	/	/	/	0.167	0	0	0.111	0	0.136	0	0	0.02	0	0.404	
39	<i>Beilschmiedia</i> sp.	Lauraceae	Tree	SB	Sarcochore	/	/	/	/	/	/	/	/	/	/	/	0	0.333	0.167	0	0.167	0	0.2	0.033	0	0.033	0.369	
40	<i>Beilschmiedia</i> sp2	Lauraceae	Tree	SB	Sarcochore	/	/	/	/	/	/	/	/	/	/	/	0	0	0.167	0	0	0	0	0.167	0	0	0.74	
41	<i>Belonophora coriacea</i> Hoyle	Rubiaceae	Tree	SB	Sarcochore	0	0	0	0	0.167	0	0	0	0	0.167	0.737	/	/	/	/	/	/	/	/	/	/	/	
42	<i>Bertiera bicarpellata</i> (K. Schum.) N. Hall?	Rubiaceae	Shrub	SB	Sarcochore	0	0.167	0.167	0.222	0	0	0.05	0.05	0.089	0	0.783	/	/	/	/	/	/	/	/	/	/	/	
43	<i>Bertiera iturensis</i> K. Krause	Rubiaceae	Shrub	SB	Sarcochore	/	/	/	/	/	/	/	/	/	/	/	0	0	0	0.111	0	0	0	0	0.111	0	1	
44	<i>Bertiera racemosa</i> (G. Don) K. Schum.	Rubiaceae	Shrub	SB	Sarcochore	0	0	0	0.111	0	0	0	0	0.111	0	1	/	/	/	/	/	/	/	/	/	/	/	
45	<i>Bertiera</i> sp.	Rubiaceae	Shrub	SB	Sarcochore	0.833	0.333	0.333	0.333	0	0.333	0.111	0.044	0.044	0	0.064	0	0.5	0.5	0.111	0.167	0	0.158	0.197	0.006	0.039	0.416	
46	<i>Bertiera</i> sp1	Rubiaceae	Shrub	SB	Sarcochore	/	/	/	/	/	/	/	/	/	/	/	0.333	0.167	0	0.222	0	0.133	0.033	0	0.089	0	0.577	
47	<i>Bertiera</i> sp2	Rubiaceae	Shrub	SB	Sarcochore	/	/	/	/	/	/	/	/	/	/	/	0	0.333	0	0	0	0	0.333	0	0	0	0.113	
48	<i>Blighia sapida</i> K. D. Koenig	Sapindaceae	Tree	SB	Sarcochore	/	/	/	/	/	/	/	/	/	/	/	0	0	0	0.111	0	0	0	0	0.111	0	1	
49	<i>Blighia welwitschii</i> (Hiern) Radlk.	Sapindaceae	Tree	SB	Sarcochore	/	/	/	/	/	/	/	/	/	/	/	0	0	0	0.222	0	0	0	0	0.222	0	0.181	
50	<i>Bombax buonopozense</i> P. Beauv.	Malvaceae	Tree	P	Pogonochore	/	/	/	/	/	/	/	/	/	/	/	0	0	0	0	0.167	0	0	0	0	0.167	0.737	
51	<i>Calamus</i> sp.	Arecaceae	Herb	NPLD	Sarcochore	0	0	0	0.111	0	0	0	0	0.111	0	1	0	0	0	0.111	0	0	0	0	0.111	0	1	
52	<i>Calamus</i> sp1	Arecaceae	Herb	NPLD	Sarcochore	0.333	0	0.167	0.333	0.167	0.1	0	0.025	0.133	0.025	0.667	/	/	/	/	/	/	/	/	/	/	/	
53	<i>Calamus</i> sp2	Arecaceae	Herb	NPLD	Sarcochore	0.333	0.167	0	0.111	0	0.154	0.038	0	0.034	0	0.462	/	/	/	/	/	/	/	/	/	/	/	
54	<i>Calpocalyx dinklagei</i> Harms	Fabaceae	Tree	SB	Ballochore	0	0	0	0.111	0	0	0	0	0.111	0	1	0	0.167	0.5	0.444	0.167	0	0.019	0.087	0.291	0.01	0.206	
55	<i>Calpocalyx</i> sp.	Fabaceae	Tree	SB	Ballochore	0	0	0.167	0	0	0	0	0.167	0	0	0.718	0.333	0.167	0.167	0	0	0.286	0.012	0.012	0	0	0.166	
56	<i>Calycobolus</i> sp.	Convolvulaceae	Liana	P	Pterochore	0	0.167	0	0.222	0	0	0.079	0	0.117	0	0.401	/	/	/	/	/	/	/	/	/	/	/	
57	<i>Campuloa</i> sp.		Herb	P		/	/	/	/	/	/	/	/	/	/	/	0	0	0	0	0	0.167	0	0	0	0	0.167	0.725
58	<i>Campylopermum mannii</i> (Oliv.) Tiegh.	Ochnaceae	Shrub	SB	Sarcochore	0.333	0.333	0	0	0.167	0.133	0.133	0	0	0.033	0.812	0.667	0.5	0.5	0.444	0.333	0.163	0.122	0.092	0.091	0.041	0.859	

59	Campylospermum sp1	Ochnaceae	Shrub	SB	Sarcochore	0.167	0.5	0.333	0.222	0.333	0.024	0.214	0.048	0.032	0.048	0.328	0.667	0.5	0.167	0.556	0.333	0.171	0.15	0.007	0.175	0.029	0.755
60	Campylospermum sp2	Ochnaceae	Shrub	SB	Sarcochore	0	0.333	0	0.222	0.167	0	0.154	0	0.068	0.038	0.398	0.5	0.167	0	0.111	0	0.316	0.026	0	0.023	0	0.065
61	Campylospermum sp3	Ochnaceae	Shrub	SB	Sarcochore	/	/	/	/	/	/	/	/	/	/	/	0	0	0	0.111	0	0	0	0	0.111	0	1
62	Campylospermum sp5	Ochnaceae	Shrub	SB	Sarcochore	/	/	/	/	/	/	/	/	/	/	/	0.167	0	0	0	0	0.167	0	0	0	0	0.74
63	Carapa procera DC.	Meliaceae	Tree	SB	Sarcochore	/	/	/	/	/	/	/	/	/	/	/	0.667	0.667	0.5	0.667	0.5	0.14	0.12	0.15	0.147	0.045	0.987
64	Carapa sp2	Meliaceae	Tree	SB	Sarcochore	/	/	/	/	/	/	/	/	/	/	/	0.167	0	0	0.111	0	0.1	0	0	0.044	0	0.588
65	Carpolobia alba G. Don	Polygalaceae	Shrub	SB	Sarcochore	/	/	/	/	/	/	/	/	/	/	/	0	0	0.167	0.111	0	0	0	0.1	0.044	0	0.578
66	Ceiba pentandra (L.) Gaertn.	Malvaceae	Tree	P	Pogonochore	/	/	/	/	/	/	/	/	/	/	/	0	0	0.167	0	0	0	0	0.167	0	0	0.716
67	Celtis adolfi-friderici Engl.	Cannabaceae	Tree	NPLD	Sarcochore	/	/	/	/	/	/	/	/	/	/	/	0.167	0.167	0.333	0	0	0.042	0.042	0.167	0	0	0.586
68	Celtis mildbraedii Engl.	Cannabaceae	Tree	NPLD	Sarcochore	0.333	0.333	0	0	0.167	0.167	0.111	0	0	0.028	0.467	0.333	0.5	0.667	0.111	0.5	0.058	0.11	0.147	0.003	0.176	0.635
69	Celtis sp.	Cannabaceae	Tree	NPLD	Sarcochore	0	0	0	0	0.167	0	0	0	0	0.167	0.714	0.167	0	0	0	0	0.167	0	0	0	0	0.743
70	Celtis tessmannii Rendle	Cannabaceae	Tree	NPLD	Sarcochore	0	0	0	0.111	0	0	0	0	0.111	0	1	0.167	0	0.167	0.333	0.333	0.024	0	0.048	0.095	0.095	0.889
71	Celtis zenkeri Engl.	Cannabaceae	Tree	NPLD	Sarcochore	0	0	0	0.222	0.167	0	0	0	0.127	0.071	0.486	0	0.167	0.167	0.111	0	0	0.045	0.091	0.02	0	0.698
72	Centropachus glaucinus Pierre	Centroplacaceae	Tree	SB	Sarcochore	0.167	0	0	0	0	0.167	0	0	0	0	0.732	0.833	0.5	0	0.333	0.333	0.508	0.07	0	0.052	0.031	0.013
73	Cercestis mirabilis (N.E. Br.) Bogner	Araceae	Herb	SB	Sarcochore	0	0	0	0.333	0	0	0	0	0.333	0	0.038	/	/	/	/	/	/	/	/	/	/	/
74	Chassalia sp.	Rubiaceae	Shrub	SB	Sarcochore	/	/	/	/	/	/	/	/	/	/	/	0	0	0	0.111	0	0	0	0	0.111	0	1
75	Christiana africana DC.	Malvaceae	Tree	SB	Sclerochore	/	/	/	/	/	/	/	/	/	/	/	0.167	0	0	0	0	0.167	0	0	0	0	0.738
76	Chrysophyllum lacourtianum De Wild.	Sapotaceae	Tree	NPLD	Sarcochore	/	/	/	/	/	/	/	/	/	/	/	0.5	0.167	0.5	0.444	0	0.118	0.026	0.197	0.093	0	0.393
77	Chytranthus sp.	Sapindaceae	Tree	SB	Sarcochore	/	/	/	/	/	/	/	/	/	/	/	0.667	0.167	0	0.111	0.5	0.377	0.009	0	0.004	0.17	0.063
78	Chytranthus sp1	Sapindaceae	Tree	SB	Sarcochore	/	/	/	/	/	/	/	/	/	/	/	0.167	0	0	0	0	0.167	0	0	0	0	0.705
79	Chytranthus sp2	Sapindaceae	Tree	SB	Sarcochore	/	/	/	/	/	/	/	/	/	/	/	0.167	0	0	0	0	0.167	0	0	0	0	0.726
80	Cissus sp.	Vitaceae	Liana	P	Sarcochore	/	/	/	/	/	/	/	/	/	/	/	0.167	0.333	0	0.222	0	0.079	0.105	0	0.047	0	0.676
81	Cissus sp2	Vitaceae	Liana	P	Sarcochore	/	/	/	/	/	/	/	/	/	/	/	0	0	0	0.222	0	0	0	0	0.222	0	0.184
82	Cissus sp3	Vitaceae	Liana	P	Sarcochore	/	/	/	/	/	/	/	/	/	/	/	0	0	0	0.111	0	0	0	0	0.111	0	1
83	Cleianthus sp.		Tree	SB		/	/	/	/	/	/	/	/	/	/	/	0	0.167	0	0	0	0	0.167	0	0	0	0.714
84	Clerodendron sp.		Liana	SB	Sclerochore	/	/	/	/	/	/	/	/	/	/	/	0.167	0	0	0	0	0.167	0	0	0	0	0.737
85	Clerodendrum sp.		Liana	SB	Sclerochore	0.333	0	0	0	0.167	0.222	0	0	0	0.056	0.299	/	/	/	/	/	/	/	/	/	/	/
86	Cnestis ferruginea DC.	Connaraceae	Liana	SB	Sarcochore	0	0	0	0.222	0	0	0	0	0.222	0	0.181	0	0	0.167	0	0.167	0	0	0.111	0	0.056	0.793
87	Cnestis sp.	Connaraceae	Liana	SB	Sarcochore	0.333	0.167	0.833	0.333	0.333	0.056	0.009	0.417	0.037	0.056	0.02	/	/	/	/	/	/	/	/	/	/	/
88	Coelocaryon preussii Warb.	Myristicaceae	Tree	NPLD	Sarcochore	/	/	/	/	/	/	/	/	/	/	/	0	0	0.167	0	0	0	0	0.167	0	0	0.721
89	Coffea sp1	Rubiaceae	Shrub	SB	Sarcochore	0	0	0	0.222	0	0	0	0	0.222	0	0.197	0	0	0	0.556	0	0	0	0	0.556	0	0.005
90	Coffea sp2	Rubiaceae	Shrub	SB	Sarcochore	/	/	/	/	/	/	/	/	/	/	/	0	0.167	0	0.111	0	0	0.1	0	0.044	0	0.583
91	Coffea sp3	Rubiaceae	Shrub	SB	Sarcochore	0.167	0.167	0.333	0.222	0.333	0.036	0.018	0.071	0.032	0.107	0.889	1	0.5	0.167	0.444	0.333	0.557	0.032	0.004	0.102	0.043	0.005
92	Coffea sp4	Rubiaceae	Shrub	SB	Sarcochore	0	0	0	0.111	0	0	0	0	0.111	0	1	/	/	/	/	/	/	/	/	/	/	/
93	Coffea stenophylla G. Don	Rubiaceae	Shrub	SB	Sarcochore	0	0.167	0	0	0	0	0.167	0	0	0	0.721	0	0.333	0.167	0.111	0	0	0.143	0.071	0.016	0	0.487

94	<i>Cola acuminata</i> (P. Beauv.) Schott & Endl.	Malvaceae	Tree	SB	Sarcochore	/	/	/	/	/	/	/	/	/	/	/	0	0	0	0	0.167	0	0	0	0	0.167	0.731	
95	<i>Cola digitata</i> Mast.	Malvaceae	Shrub	SB	Sarcochore	0.167	0	0	0	0	0.167	0	0	0	0	0.706	0.167	0.333	0.167	0.111	0	0.058	0.118	0.03	0.013	0	0.764	
96	<i>Cola lateritia</i> K. Schum.	Malvaceae	Tree	SB	Sarcochore	0	0.167	0.167	0	0	0	0.083	0.083	0	0	1	0.333	0.167	0.5	0.222	0.167	0.057	0.014	0.214	0.051	0.014	0.287	
97	<i>Cola</i> sp.	Malvaceae	Tree	SB	Sarcochore	0.167	0	0	0	0	0.167	0	0	0	0	0.729	0.667	0	0	0.111	0	0.615	0	0	0.009	0	0.005	
98	<i>Cola verticillata</i> (Thonn.) Stapf ex A. Chev.	Malvaceae	Tree	SB	Sarcochore	/	/	/	/	/	/	/	/	/	/	/	0	0.167	0	0	0	0	0.167	0	0	0	0.723	
99	<i>Commelina benghalensis</i> L.	Commelinaceae	Herb	NPLD	Sclerochore	0	0.167	0	0	0	0	0.167	0	0	0	0.735	/	/	/	/	/	/	/	/	/	/	/	
100	<i>Commelina</i> sp.	Commelinaceae	Herb	NPLD	Sclerochore	0	0.5	0	0.111	0.5	0	0.261	0	0.01	0.196	0.168	/	/	/	/	/	/	/	/	/	/	/	
101	<i>Commelina</i> sp1	Commelinaceae	Herb	NPLD	Sclerochore	0	0	0	0.222	0	0	0	0	0.222	0	0.171	/	/	/	/	/	/	/	/	/	/	/	
102	<i>Commelina</i> sp2	Commelinaceae	Herb	NPLD	Sclerochore	0.833	0.333	0.667	0	0	0.333	0.044	0.311	0	0	0.059	/	/	/	/	/	/	/	/	/	/	/	
103	<i>Commelina</i> sp3	Commelinaceae	Herb	NPLD	Sclerochore	0.167	0	0.333	0.111	0	0.045	0	0.182	0.02	0	0.39	/	/	/	/	/	/	/	/	/	/	/	
104	<i>Commelina</i> sp4	Commelinaceae	Herb	NPLD	Sclerochore	0	0.167	0.167	0	0	0	0.083	0.083	0	0	1	/	/	/	/	/	/	/	/	/	/	/	
105	<i>Commelina</i> sp5	Commelinaceae	Herb	NPLD	Sclerochore	0.167	0	0	0	0	0.167	0	0	0	0	0.724	/	/	/	/	/	/	/	/	/	/	/	
106	<i>Copaifera mildbraedii</i> Harms	Fabaceae	Tree	NPLD	Sarcochore	0	0	0	0.111	0	0	0	0	0.111	0	1	0	0	0	0.111	0	0	0	0	0.111	0	1	
107	<i>Corynanthe pachyceras</i> K. Schum.	Rubiaceae	Tree	SB	Pterochore	/	/	/	/	/	/	/	/	/	/	/	0	0.167	0	0	0.167	0	0.083	0	0	0.083	1	
108	<i>Costus afer</i> Ker Gawl.	Costaceae	Herb	SB	Sarcochore	0	0	0	0.111	0	0	0	0	0.111	0	1	/	/	/	/	/	/	/	/	/	/	/	
109	<i>Costus</i> sp.	Costaceae	Herb	SB	Sarcochore	0	0	0	0.111	0	0	0	0	0.111	0	1	/	/	/	/	/	/	/	/	/	/	/	
110	<i>Coula edulis</i> Baill.	Olcaceae	Tree	SB	Sarcochore	/	/	/	/	/	/	/	/	/	/	/	0	0	0.167	0	0	0	0	0	0.167	0	0.731	
111	<i>Crudia zenkeri</i> Harms ex De Wild.	Fabaceae	Tree	SB	Ballochore	/	/	/	/	/	/	/	/	/	/	/	0	0	0	0.111	0	0	0	0	0.111	0	1	
112	<i>Cylicodiscus gabunensis</i> Harms	Fabaceae	Tree	P	Pterochore	0	0	0	0.111	0	0	0	0	0.111	0	1	0.167	0.167	0.167	0.222	0	0.029	0.029	0.029	0.105	0	0.813	
113	<i>Cytisus</i> sp.					0	0.167	0	0.111	0.167	0	0.045	0	0.02	0.091	0.72	/	/	/	/	/	/	/	/	/	/	/	
114	<i>Dacryodes edulis</i> (G. Don) H. J. Lam	Burseraceae	Tree	SB	Sarcochore	/	/	/	/	/	/	/	/	/	/	/	0.167	0	0	0	0	0.167	0	0	0	0	0.726	
115	<i>Dacryodes igaganga</i> Aubr?v. & Pellegr.	Burseraceae	Tree	SB	Sarcochore	/	/	/	/	/	/	/	/	/	/	/	0	0.167	0	0.111	0	0	0.1	0	0.044	0	0.629	
116	<i>Desbordesia glaucescens</i> (Engl.) Tiegh.	Irvingiaceae	Tree	NPLD	Pterochore	0	0	0	0.111	0	0	0	0	0.111	0	1	/	/	/	/	/	/	/	/	/	/	/	
117	<i>Desplatsia dewevrei</i> (De Wild. & Durand) Burret	Malvaceae	Tree	SB	Sarcochore	/	/	/	/	/	/	/	/	/	/	/	0.667	0	0.167	0.444	0	0.438	0	0.016	0.111	0	0.015	
118	<i>Dewevrea bilabiata</i> Micheli	Fabaceae	Liana	SB		/	/	/	/	/	/	/	/	/	/	/	0	0.167	0	0	0	0	0.167	0	0	0	0.717	
119	<i>Dialium angolense</i> Welw. ex Oliv.	Fabaceae	Tree	SB	Sarcochore	/	/	/	/	/	/	/	/	/	/	/	0	0.167	0	0	0	0	0.167	0	0	0	0.725	
120	<i>Dialium bipindense</i> Harms	Fabaceae	Tree	SB	Sarcochore	0.167	0	0	0.222	0	0.056	0	0	0.148	0	0.439	0	0	0.167	0	0	0	0	0.167	0	0	0.708	
121	<i>Dialium pachyphyllum</i> Harms	Fabaceae	Tree	SB	Sarcochore	0.167	0	0	0	0	0.167	0	0	0	0	0.71	0.667	0	0	0.222	0.167	0.419	0	0	0.052	0.023	0.017	
122	<i>Dialium pobeguini</i> Pellegr.	Fabaceae	Tree	SB	Sarcochore	/	/	/	/	/	/	/	/	/	/	/	0	0	0.167	0	0	0	0	0.167	0	0	0.712	
123	<i>Dialium</i> sp.	Fabaceae	Tree	SB	Sarcochore	/	/	/	/	/	/	/	/	/	/	/	0.667	0.167	0	0.222	0.167	0.378	0.014	0	0.06	0.014	0.044	
124	<i>Dialium zenkeri</i> Harms	Fabaceae	Tree	SB	Sarcochore	/	/	/	/	/	/	/	/	/	/	/	0.167	0.167	0.333	0.111	0	0.029	0.059	0.118	0.013	0	0.782	
125	<i>Dicranolepis persei</i> H. A. Cummins	Thymelaeaceae	Shrub	SB	Sarcochore	0	0	0.167	0	0	0	0	0	0.167	0	0	0.736	0	0	0	0.111	0	0	0	0	0.111	0	1

126	Dicranolepis pulcherrima Gilg	Thymelaeaceae	Shrub	SB	Sarcochore	0	0.333	0.333	0.111	0	0	0.103	0.207	0.008	0	0.381	0	0.5	0	0	0	0	0.5	0	0	0	0.014
127	Dictyandra sp.	Rubiaceae	Tree	SB	Sarcochore	/	/	/	/	/	/	/	/	/	/	/	0	0	0	0.111	0	0	0	0	0.111	0	1
128	Dioscorea sp.	Dioscoreaceae	Liana	SB	Sarcochore	0	0	0.167	0	0.167	0	0	0.083	0	0.083	1	/	/	/	/	/	/	/	/	/	/	/
129	Diospyros hoyleana F. White	Ebenaceae	Tree	SB	Sarcochore	0.5	0.167	0.333	0.444	0	0.207	0.017	0.069	0.123	0	0.273	0.333	0.333	0.5	0.444	0.333	0.066	0.066	0.172	0.073	0.033	0.654
130	Diospyros mannii Hiern	Ebenaceae	Tree	SB	Sarcochore	0	0	0	0.222	0.167	0	0	0	0.105	0.088	0.478	0.167	0	0	0.111	0	0.125	0	0	0.028	0	0.396
131	Diospyros mcphersonii G. E. Schatz & Lowry	Ebenaceae	Tree	SB	Sarcochore	0	0	0.333	0.111	0	0	0	0.25	0.028	0	0.127	0.167	0	0.333	0.111	0	0.045	0	0.182	0.02	0	0.371
132	Diospyros sp.	Ebenaceae	Tree	SB	Sarcochore	/	/	/	/	/	/	/	/	/	/	/	0.167	0.5	0.333	0.111	0.5	0.013	0.118	0.105	0.006	0.158	0.695
133	Diospyros sp3	Ebenaceae	Shrub	SB	Sarcochore	0	0	0	0.111	0	0	0	0	0.111	0	1	/	/	/	/	/	/	/	/	/	/	/
134	Diospyros sp4	Ebenaceae	Shrub	SB	Sarcochore	/	/	/	/	/	/	/	/	/	/	/	0.167	0	0	0	0	0.167	0	0	0	0	0.712
135	Diospyros sp5	Ebenaceae	Shrub	SB	Sarcochore	/	/	/	/	/	/	/	/	/	/	/	0	0	0.167	0	0	0	0	0	0.167	0	0.74
136	Diplazium welwitschii (Hook.) Diels	Athyriaceae	Herb	SB	Sclerochore	0.333	0	0	0	0	0.333	0	0	0	0	0.118	/	/	/	/	/	/	/	/	/	/	/
137	Dipteropeltis sp.	Convolvulaceae	Liana	P	Sarcochore	0	0	0.167	0	0	0	0	0.167	0	0	0.724	/	/	/	/	/	/	/	/	/	/	/
138	Dracaena arborea (Willd.) Link	Asparagaceae	Tree	NPLD	Sarcochore	0	0	0	0	0.167	0	0	0	0	0.167	0.728	/	/	/	/	/	/	/	/	/	/	/
139	Dracaena camerooniana Baker	Asparagaceae	Herb	SB	Sarcochore	0	0.167	0.167	0	0	0	0.083	0.083	0	0	1	/	/	/	/	/	/	/	/	/	/	/
140	Dracaena sp1	Asparagaceae	Herb	SB	Sarcochore	0	0.167	0.167	0.111	0	0	0.05	0.05	0.044	0	1	/	/	/	/	/	/	/	/	/	/	/
141	Drypetes afzelii (Pax) Hutch.	Putranjivaceae	Tree	SB	Sarcochore	/	/	/	/	/	/	/	/	/	/	/	0	0.167	0	0	0	0	0.167	0	0	0	0.73
142	Drypetes gossweileri S. Moore	Putranjivaceae	Tree	SB	Sarcochore	0	0	0	0	0.167	0	0	0	0	0.167	0.734	0	0	0.167	0.444	0	0	0	0.05	0.311	0	0.082
143	Drypetes ituriensis Pax & K. Hoffm.	Putranjivaceae	Tree	SB	Sarcochore	/	/	/	/	/	/	/	/	/	/	/	0	0	0	0.111	0.167	0	0	0	0.011	0.15	0.38
144	Drypetes laciniata (Pax) Hutch.	Putranjivaceae	Tree	SB	Sarcochore	/	/	/	/	/	/	/	/	/	/	/	0	0	0	0.111	0	0	0	0	0.111	0	1
145	Drypetes paxii Hutch.	Putranjivaceae	Tree	SB	Sarcochore	/	/	/	/	/	/	/	/	/	/	/	0	0	0	0.111	0	0	0	0	0.111	0	1
146	Drypetes preussii (Pax) Hutch.	Putranjivaceae	Tree	SB	Sarcochore	/	/	/	/	/	/	/	/	/	/	/	0	0	0	0.111	0	0	0	0	0.111	0	1
147	Drypetes sp.	Putranjivaceae	Shrub	SB	Sarcochore	0.333	0.5	0.333	0.778	0.333	0.043	0.087	0.043	0.338	0.043	0.078	1	1	1	0.889	0.833	0.151	0.151	0.259	0.21	0.169	0.499
148	Drypetes sp1	Putranjivaceae	Tree	SB	Sarcochore	/	/	/	/	/	/	/	/	/	/	/	0.5	0.333	0	0.222	0	0.188	0.063	0	0.097	0	0.501
149	Drypetes sp2	Putranjivaceae	Tree	SB	Sarcochore	0	0	0	0.111	0	0	0	0	0.111	0	1	0.333	0	0.167	0	0	0.25	0	0.042	0	0.232	
150	Drypetes sp3	Putranjivaceae	Tree	SB	Sarcochore	/	/	/	/	/	/	/	/	/	/	/	0	0	0	0.111	0	0	0	0	0.111	0	1
151	Drypetes sp4	Putranjivaceae	Tree	SB	Sarcochore	/	/	/	/	/	/	/	/	/	/	/	0	0.167	0	0	0	0	0.167	0	0	0	0.696
152	Drypetes spinosdentata (Pax) Hutch.	Putranjivaceae	Tree	SB	Sarcochore	0.167	0.167	0	0	0	0.083	0.083	0	0	0	1	0.5	0.333	0.333	0.222	0.167	0.098	0.065	0.159	0.017	0.009	0.66
153	Duboscia macrocarpa Bocq.	Malvaceae	Tree	NPLD	Sarcochore	0.333	0.333	0	0	0.167	0.095	0.19	0	0	0.024	0.471	0.167	0.5	0.333	0	0.167	0.012	0.179	0.143	0	0.024	0.386
154	Duguetia sp.	Annonaceae	Tree	NPLD	Barochore	/	/	/	/	/	/	/	/	/	/	/	0.167	0.167	0.333	0	0	0.033	0.033	0.2	0	0	0.352
155	Duguetia staudtii (Engl. & Diels) Chatrou	Annonaceae	Tree	NPLD	Barochore	/	/	/	/	/	/	/	/	/	/	/	0.167	0	0	0.111	0.333	0.045	0	0	0.02	0.182	0.386
156	Elaeis guineensis Jacq.	Arecaceae	Tree	P	Sarcochore	0	0.167	0	0	0	0	0.167	0	0	0	0.725	0	0	0	0	0.167	0	0	0	0	0.167	0.714
157	Entandrophragma angolense (Welw.) C. DC.	Meliaceae	Tree	NPLD	Pterochore	0	0	0	0.111	0	0	0	0	0.111	0	1	0.167	0	0	0.222	0	0.071	0	0	0.127	0	0.515
158	Entandrophragma candollei Harms	Meliaceae	Tree	NPLD	Pterochore	0	0	0	0.111	0	0	0	0	0.111	0	1	0.167	0	0.333	0.111	0.167	0.036	0	0.143	0.016	0.036	0.695

159	Entandrophragma cylindricum (Sprague) Sprague	Meliaceae	Tree	NPLD	Pterochore	/	/	/	/	/	/	/	/	/	/	/	0	0.167	0.167	0.444	0	0	0.031	0.031	0.278	0	0.143
160	Entandrophragma sp.	Meliaceae	Tree	NPLD	Pterochore	/	/	/	/	/	/	/	/	/	/	/	0	0	0	0.111	0	0	0	0	0.111	0	1
161	Entandrophragma utile (Dawe & Sprague) Sprague	Meliaceae	Tree	NPLD	Pterochore	/	/	/	/	/	/	/	/	/	/	/	0.167	0	0.333	0	0	0.042	0	0.25	0	0	0.226
162	Eribroma oblongum (Mast.) Pierre ex A. Chev.	Malvaceae	Tree	SB	Sarcochore	/	/	/	/	/	/	/	/	/	/	/	0	0	0	0.111	0	0	0	0	0.111	0	1
163	Eriocoelum petiolare Radlk.	Sapindaceae	Tree	SB	Sarcochore	/	/	/	/	/	/	/	/	/	/	/	0	0.167	0.167	0	0	0	0.083	0.083	0	0	1
164	Eriocoelum sp.	Sapindaceae	Tree	SB	Sarcochore	/	/	/	/	/	/	/	/	/	/	/	0.167	0	0	0	0	0	0.167	0	0	0	0.728
165	Erisma delphus exsul Mildbr.	Vochysiaceae	Tree	P	Pterochore	/	/	/	/	/	/	/	/	/	/	/	0	0	0.167	0	0.167	0	0	0.083	0	0.083	1
166	Erythrophleum suaveolens (Guill. & Perr.) Brenan	Fabaceae	Tree	P	Ballochore	0	0.167	0	0	0	0	0.167	0	0	0	0.736	0	0	0.167	0.111	0	0	0	0.1	0.044	0	0.582
167	Eumachia sciadephora (Hiern) Razafim. & C. M. Taylor	Rubiaceae	Shrub	SB	Sarcochore	0	0	0	0.111	0	0	0	0	0.111	0	1	/	/	/	/	/	/	/	/	/	/	/
168	Euphorbia sp.	Euphorbiaceae			Sarcochore	/	/	/	/	/	/	/	/	/	/	/	0	0.167	0.167	0	0	0	0.056	0.111	0	0	0.794
169	Euphorbia sp1	Euphorbiaceae			Sarcochore	/	/	/	/	/	/	/	/	/	/	/	0	0.167	0	0	0	0	0.167	0	0	0	0.718
170	Euphorbia sp2	Euphorbiaceae			Sarcochore	0	0.167	0.167	0	0	0	0.083	0.083	0	0	1	0	0.167	0	0	0	0	0.167	0	0	0	0.727
171	Ficus sp.	Moraceae		NPLD	Sarcochore	0	0	0.333	0	0	0	0	0.333	0	0	0.098	/	/	/	/	/	/	/	/	/	/	/
172	Funtumia africana (Benth.) Stapf	Apocynaceae	Tree	SB	Pogonochore	/	/	/	/	/	/	/	/	/	/	/	0	0.333	0	0	0	0	0.333	0	0	0	0.117
173	Funtumia elastica (P. Preuss) Stapf	Apocynaceae	Tree	SB	Pogonochore	/	/	/	/	/	/	/	/	/	/	/	0	0	0.167	0	0.333	0	0	0.083	0	0.167	0.347
174	Garcinia mannii Oliv.	Clusiaceae	Tree	SB	Sarcochore	/	/	/	/	/	/	/	/	/	/	/	0	0	0	0.222	0	0	0	0	0.222	0	0.193
175	Garcinia ovalifolia Oliv.	Clusiaceae	Tree	SB	Sarcochore	/	/	/	/	/	/	/	/	/	/	/	0	0	0	0.111	0	0	0	0	0.111	0	1
176	Garcinia preussii Engl.	Clusiaceae	Tree	SB	Sarcochore	/	/	/	/	/	/	/	/	/	/	/	0	0	0	0.111	0	0	0	0	0.111	0	1
177	Garcinia sp.	Clusiaceae	Tree	SB	Sarcochore	0.167	0	0	0	0	0.167	0	0	0	0	0.729	0.5	0	0.167	0.222	0.5	0.203	0	0.014	0.024	0.203	0.378
178	Gardenia sp.	Rubiaceae	Shrub	SB	Sarcochore	/	/	/	/	/	/	/	/	/	/	/	0	0.167	0	0	0	0	0.167	0	0	0	0.703
179	Geophila afzelii Hiern	Rubiaceae	Herb	SB	Sarcochore	0	0	0	0.111	0	0	0	0	0.111	0	1	/	/	/	/	/	/	/	/	/	/	/
180	Geophila lancistipula Hiern	Rubiaceae	Herb	SB	Sarcochore	0.167	0	0	0	0	0.167	0	0	0	0	0.722	/	/	/	/	/	/	/	/	/	/	/
181	Geophila macropoda (Ruiz & Pav.) DC.	Rubiaceae	Herb	SB	Sarcochore	0.5	0	0	0	0	0.5	0	0	0	0.008	/	/	/	/	/	/	/	/	/	/	/	/
182	Geophila obvallata (Schumach.) Didr.	Rubiaceae	Herb	SB	Sarcochore	0.5	0	0.5	0.111	0	0.188	0	0.188	0.028	0	0.313	/	/	/	/	/	/	/	/	/	/	/
183	Geophila sp.	Rubiaceae	Herb	SB	Sarcochore	0.167	0	0.167	0	0	0.125	0	0.042	0	0	0.808	/	/	/	/	/	/	/	/	/	/	/
184	Geophila uniflora Hiern	Rubiaceae	Herb	SB	Sarcochore	0	0	0	0.222	0	0	0	0	0.222	0	0.172	/	/	/	/	/	/	/	/	/	/	/
185	Gnetum africanum Welw.	Gnetaceae	Liana	SB	Sclerochore	0	0	0	0	0.333	0	0	0	0	0.333	0.121	/	/	/	/	/	/	/	/	/	/	/
186	Greenwayodendron suaveolens (Engl. & Diels) Verdc.	Annonaceae	Tree	SB	Sarcochore	0.333	0.833	0.333	0.778	0.167	0.036	0.313	0.036	0.278	0.009	0.113	1	0.833	1	0.889	0.833	0.23	0.201	0.207	0.184	0.096	0.839
187	Grewia coriacea Mast.	Malvaceae	Tree	SB	Sarcochore	/	/	/	/	/	/	/	/	/	/	/	0.5	0	0	0.333	0	0.417	0	0	0.056	0	0.013
188	Halopogia azurea (K. Schum.) K. Schum.	Marantaceae	Herb	P	Ballochore	0	0	0	0.333	0	0	0	0	0.333	0	0.033	/	/	/	/	/	/	/	/	/	/	/
189	Haumania danckelmaniana (J.	Marantaceae	Herb	P	Ballochore	0.167	0.5	0	0	0.5	0.021	0.188	0	0	0.25	0.176	/	/	/	/	/	/	/	/	/	/	/

	Braun & K. Schum.) Milne-Redh.																											
190	Haumania sp.	Marantaceae	Herb	P	Ballochore	0.833	0.5	0.5	0.778	0.667	0.218	0.102	0.058	0.166	0.136	0.63	/	/	/	/	/	/	/	/	/	/		
191	Haumania sp2	Marantaceae	Herb	P	Ballochore	0.167	0	0	0.111	0	0.1	0	0	0.044	0	0.592	/	/	/	/	/	/	/	/	/	/		
192	Heinsia sp.	Rubiaceae	Shrub	NPLD	Sarcochore	/	/	/	/	/	/	/	/	/	/	/	0.167	0	0	0	0	0	0.167	0	0	0	0.739	
193	Heisteria parvifolia Sm.	Olacaceae	Tree	SB	Sarcochore	/	/	/	/	/	/	/	/	/	/	/	0	0	0	0	0	0.167	0	0	0	0	0.167	0.734
194	Hexalobus crispiflorus A. Rich.	Annonaceae	Tree	SB	Sarcochore	/	/	/	/	/	/	/	/	/	/	/	0.167	0	0.167	0	0	0	0.111	0	0.056	0	0	0.815
195	Homalium africanum (Hook. f.) Benth.	Salicaceae	Tree	SB	Sclerochore	/	/	/	/	/	/	/	/	/	/	/	0.167	0	0	0	0	0	0.167	0	0	0	0	0.754
196	Homalium letestui Pellegr.	Salicaceae	Tree	SB	Sclerochore	/	/	/	/	/	/	/	/	/	/	/	0.167	0	0	0	0	0	0.167	0	0	0	0	0.727
197	Homalium sp.	Salicaceae	Tree	SB	Sclerochore	0	0.167	0.167	0	0	0	0.083	0.083	0	0	1	/	/	/	/	/	/	/	/	/	/	/	/
198	Hyiodendron gabunense Taub.	Fabaceae	Tree	P	Pterochore	0.167	0.333	0.833	0.444	0.833	0.012	0.073	0.142	0.065	0.325	0.133	0.167	0	0.667	0.111	0.333	0.008	0	0.161	0.004	0.226	0.612	
199	Hymenocoleus hirsutus (Benth.) Robbr.	Rubiaceae	Herb	SB	Sclerochore	0	0	0	0	0.333	0	0	0	0	0.333	0.11	/	/	/	/	/	/	/	/	/	/	/	/
200	Hymenocoleus nervopilosus Robbr.	Rubiaceae	Herb	SB	Sclerochore	0	0	0	0.333	0	0	0	0	0.333	0	0.027	/	/	/	/	/	/	/	/	/	/	/	/
201	Hymenocoleus neurodictyon (K. Schum.) Robbr.	Rubiaceae	Herb	SB	Sclerochore	0.167	0	0	0	0.167	0.111	0	0	0	0.056	0.801	/	/	/	/	/	/	/	/	/	/	/	/
202	Hymenocoleus sp.	Rubiaceae	Herb	SB	Sclerochore	0	0	0	0.222	0	0	0	0	0.222	0	0.161	/	/	/	/	/	/	/	/	/	/	/	/
203	Indet Aristrolenthus curpensis			SB		0	0	0	0.111	0	0	0	0	0.111	0	1	/	/	/	/	/	/	/	/	/	/	/	/
204	Indet Carusia		Liana	P		/	/	/	/	/	/	/	/	/	/	/	0	0	0	0.111	0	0	0	0	0.111	0	1	
205	Indet Macroparium					0	0	0	0.111	0	0	0	0	0.111	0	1	/	/	/	/	/	/	/	/	/	/	/	/
206	Ipomoea sp.	Convolvulaceae	Liana	SB	Sarcochore	0	0	0	0.111	0.167	0	0	0	0.02	0.136	0.394	/	/	/	/	/	/	/	/	/	/	/	/
207	Irvingia gabonensis (Aubry-LeComte ex O'Rorke) Baill.	Irvingiaceae	Tree	SB	Sarcochore	0	0	0	0.222	0.167	0	0	0	0.127	0.071	0.5	0.167	0.167	0	0.667	0.167	0.017	0.033	0	0.4	0.017	0.018	
208	Irvingia grandifolia (Engl.) Engl.	Irvingiaceae	Tree	SB	Sarcochore	0.5	0.167	0	0	0.167	0.25	0.05	0	0	0.033	0.135	0.833	0.667	0.5	0.556	0.333	0.339	0.083	0.063	0.104	0.052	0.083	
209	Irvingia robur Mildbr.	Irvingiaceae	Tree	SB	Sarcochore	/	/	/	/	/	/	/	/	/	/	/	0	0.167	0	0	0	0	0.167	0	0	0	0.721	
210	Ixora sp.	Rubiaceae	Shrub	SB	Sarcochore	/	/	/	/	/	/	/	/	/	/	/	0.167	0	0	0	0	0	0.167	0	0	0	0	0.723
211	Keayodendron bridelioides Leandri	Phyllanthaceae	Tree	SB	Sarcochore	/	/	/	/	/	/	/	/	/	/	/	0.167	0	0	0.111	0	0.1	0	0	0.044	0	0.59	
212	Keetia sp.	Rubiaceae	Shrub	SB	Sarcochore	/	/	/	/	/	/	/	/	/	/	/	0	0	0	0.111	0	0	0	0	0.111	0	1	
213	Klaineanthus sp.	Euphorbiaceae	Tree	SB	Sarcochore	/	/	/	/	/	/	/	/	/	/	/	0.167	0.167	0	0	0	0.167	0.042	0.042	0	0	0.083	0.881
214	Klainedoxa gabonensis Pierre ex Engl.	Irvingiaceae	Tree	P	Sarcochore	/	/	/	/	/	/	/	/	/	/	/	0	0	0	0.333	0.167	0	0	0	0.222	0.056	0.095	
215	Klainedoxa macrophylla Pierre ex Tiegh.	Irvingiaceae	Tree	P	Sarcochore	0	0.167	0	0	0	0	0.167	0	0	0	0.724	/	/	/	/	/	/	/	/	/	/	/	
216	Landolphia sp.	Apocynaceae	Liana	SB	Sarcochore	0.667	0.167	0.5	0.111	0.5	0.192	0.014	0.164	0.006	0.123	0.545	0.167	0	0.167	0	0.167	0.056	0	0.056	0	0.056	1	
217	Lasianthus batangensis K. Schum.	Rubiaceae	Shrub	SB	Sarcochore	0	0	0	0.111	0	0	0	0	0.111	0	1	/	/	/	/	/	/	/	/	/	/	/	
218	Lasiodiscus mannii Hook. f.	Rhamnaceae	Tree	SB	Sclerochore	/	/	/	/	/	/	/	/	/	/	/	0.167	0.167	0.333	0.444	0.333	0.015	0.015	0.088	0.131	0.088	0.815	
219	Lasiodiscus sp.	Rhamnaceae		NPLD	Sclerochore	/	/	/	/	/	/	/	/	/	/	/	0.167	0	0	0	0	0	0.167	0	0	0	0.724	
220	Lecaniodiscus cupanioides Planch.	Sapindaceae	Tree	NPLD	Sarcochore	0	0.167	0	0	0.167	0	0.083	0	0	0.083	1	0	0	0.167	0	0.333	0	0	0.056	0	0.222	0.345	

221	Lepidobotrys staudtii Engl.	Lepidobotryaceae	Tree	SB	Sarcochore	/	/	/	/	/	/	/	/	/	/	/	0	0	0.167	0	0	0	0	0.167	0	0	0.713
222	Leplaea cedrata (A. Chev.) E. J. M. Koenen & J. J. de Wilde	Meliaceae	Tree	SB	Sarcochore	0	0	0	0.111	0	0	0	0	0.111	0	1	0.167	0	0.333	0.222	0.167	0.053	0	0.105	0.047	0.026	0.874
223	Leplaea thompsonii (Sprague & Hutch.) E. J. M. Koenen & J. J. de Wilde	Meliaceae	Tree	SB	Sarcochore	0	0.167	0	0	0.167	0	0.083	0	0	0.083	1	0.167	0.167	0.167	0.222	0.167	0.022	0.022	0.043	0.077	0.022	0.969
224	Leptactina mannii subsp. & arnoldiana (De Wild.) Neuba ex Figueiredo	Rubiaceae	Shrub	P	Sarcochore	0	0	0	0.111	0	0	0	0	0.111	0	1	0.333	0	0	0	0	0.333	0	0	0	0	0.127
225	Leptopus sp.	Phyllanthaceae	Liana	SB		0	0	0	0.111	0	0	0	0	0.111	0	1	0	0	0	0.444	0.5	0	0	0	0.291	0.172	0.127
226	Lovoa trichilioides Harms	Meliaceae	Tree	NPLD	Pterochore	/	/	/	/	/	/	/	/	/	/	/	0	0	0	0.222	0.167	0	0	0	0.148	0.056	0.421
227	Macaranga assas Amougou	Euphorbiaceae	Tree	P	Sarcochore	0	0	0	0.111	0.333	0	0	0	0.028	0.25	0.129	0	0	0	0	0.167	0	0	0	0	0.167	0.747
228	Macaranga sp1	Euphorbiaceae	Tree	P	Sarcochore	/	/	/	/	/	/	/	/	/	/	/	0	0	0	0.111	0	0	0	0	0.111	0	1
229	Macaranga staudtii Pax	Euphorbiaceae	Tree	P	Sarcochore	/	/	/	/	/	/	/	/	/	/	/	0	0	0	0.111	0.167	0	0	0	0.081	0.045	1
230	Maesobotrya klaineana (Pierre) J. L'onard	Phyllanthaceae	Shrub	SB	Sarcochore	0.167	0.167	0	0	0.167	0.083	0.042	0	0	0.042	0.861	0.5	0.5	0.5	0.444	0.5	0.086	0.069	0.121	0.123	0.086	0.986
231	Maesobotrya sp.	Phyllanthaceae	Shrub	SB	Sarcochore	0	0	0	0.222	0	0	0	0	0.222	0	0.184	0.333	0	0	0.333	0	0.238	0	0	0.095	0	0.124
232	Maesopsis eminii Engl.	Rhamnaceae	Tree	P	Sarcochore	0	0	0	0.111	0.167	0	0	0	0.044	0.1	0.594	0	0	0	0.111	0	0	0	0	0.111	0	1
233	Magnistiipula tessmannii (Engl.) Prance	Chrysobalanaceae	Tree	P	Sarcochore	/	/	/	/	/	/	/	/	/	/	/	0	0	0	0	0.167	0	0	0	0	0.167	0.728
234	Mammea usambarensis Verdc.	Calophyllaceae	Tree	SB	Sarcochore	/	/	/	/	/	/	/	/	/	/	/	0	0	0	0.111	0	0	0	0	0.111	0	1
235	Manniophyton sp.	Euphorbiaceae	Liana	P	Sarcochore	0.667	0.167	0.667	0.778	0.667	0.14	0.015	0.16	0.171	0.16	0.93	/	/	/	/	/	/	/	/	/	/	/
236	Mapania sp.	Cyperaceae	Herb	SB	Sarcochore	0	0	0	0.111	0	0	0	0	0.111	0	1	/	/	/	/	/	/	/	/	/	/	/
237	Maranthes sp.	Chrysobalanaceae	Tree	SB	Sarcochore	/	/	/	/	/	/	/	/	/	/	/	0	0	0	0.333	0.167	0	0	0	0.275	0.029	0.075
238	Marantochloa congensis (K. Schum.) J. L'onard & Mullend.	Marantaceae	Herb	P	Ballochore	0	0.167	0.167	0	0	0	0.083	0.083	0	0	1	/	/	/	/	/	/	/	/	/	/	/
239	Marantochloa monophylla (K. Schum.) D'Orey	Marantaceae	Herb	P	Ballochore	0	0.167	0	0	0	0	0.167	0	0	0	0.72	/	/	/	/	/	/	/	/	/	/	/
240	Marantochloa purpurea (Ridl.) Milne-Redh.	Marantaceae	Herb	P	Ballochore	0	0	0	0.222	0	0	0	0	0.222	0	0.186	/	/	/	/	/	/	/	/	/	/	/
241	Marantochloa sp.	Marantaceae	Herb	P	Ballochore	0.667	0.833	0.667	0.778	0.167	0.137	0.27	0.098	0.183	0.015	0.295	/	/	/	/	/	/	/	/	/	/	/
242	Mareyopsis longifolia (Pax & Hoffm.) K. Hoffm.	Euphorbiaceae	Tree	SB	Sarcochore	/	/	/	/	/	/	/	/	/	/	/	0.167	0	0	0.111	0	0.1	0	0	0.044	0	0.576
243	Markhamia tomentosa (Benth.) K. Schum. ex Engl.	Bignoniaceae	Tree	P	Pterochore	0	0	0.167	0	0	0	0	0.167	0	0	0.702	0	0	0.167	0	0	0	0	0.167	0	0	0.732
244	Massularia acuminata (G. Don) Bullock ex Hoyle	Rubiaceae	Tree	SB	Sarcochore	0	0	0.167	0.222	0	0	0	0.071	0.127	0	0.481	0.5	0.167	0.167	0.444	0.667	0.115	0.013	0.013	0.137	0.205	0.421
245	Medinilla mirabilis (Gilg) Jacq.-F?l.	Melastomataceae	Liana	NPLD	Sarcochore	0	0.167	0	0.111	0	0	0.1	0	0.044	0	0.575	/	/	/	/	/	/	/	/	/	/	/
246	Memecylon sp.	Melastomataceae	Shrub	SB	Sarcochore	0.167	0	0	0	0	0.167	0	0	0	0	0.732	0	0	0	0	0.167	0	0	0	0	0.167	0.733
247	Microdesmis sp.	Pandaceae	Tree	SB	Sarcochore	0.667	0.167	0	0.89	0.167	0.189	0.009	0	0.436	0.029	0.013	0.833	0.667	0	1	1	0.094	0.155	0	0.49	0.165	0.003

248	Mimosa sp.		Herb	P	Ballochore	0	0	0.167	0	0	0	0	0.167	0	0	0.713	/	/	/	/	/	/	/	/	/	/	/	/
249	Monanthotaxis enghiana (Diels) P. H. Hoekstra	Annonaceae	Shrub	SB	Sarcochore	/	/	/	/	/	/	/	/	/	/	/	0.167	0	0.167	0	0	0.083	0	0.083	0	0	1	
250	Monanthotaxis sp.	Annonaceae	Shrub	SB	Sarcochore	0.167	0	0	0	0	0.167	0	0	0	0	0.72	0.167	0	0	0	0	0.167	0	0	0	0	0.721	
251	Monodora myristica (Gaertn.) Dunal	Annonaceae	Tree	SB	Barochore	0	0	0.167	0	0	0	0	0.167	0	0	0.717	/	/	/	/	/	/	/	/	/	/	/	
252	Monodora sp.	Annonaceae	Tree	SB	Barochore	/	/	/	/	/	/	/	/	/	/	/	0	0	0.333	0.111	0	0	0	0.143	0.063	0	0.382	
253	Monsonia sp.	Geraniaceae	Herb			/	/	/	/	/	/	/	/	/	/	/	0.167	0	0	0	0	0.167	0	0	0	0	0.744	
254	Monstera sp.	Araceae	Herb	SB	Sarcochore	0	0.167	0	0.111	0.5	0	0.036	0	0.016	0.321	0.091	/	/	/	/	/	/	/	/	/	/	/	
255	Mussaenda sp.	Rubiaceae	Shrub	P	Sarcochore	/	/	/	/	/	/	/	/	/	/	/	0	0.167	0.167	0	0	0	0.083	0.083	0	0	1	
256	Myrianthus arboreus P. Beauv.	Urticaceae	Tree	NPLD	Sarcochore	0.333	0.833	0	0.333	0.167	0.061	0.455	0	0.061	0.015	0.013	0	0.167	0.333	0.667	0.5	0	0.012	0.049	0.325	0.146	0.117	
257	Nauclea diderrichii (De Wild. & Merr.) Durand	Rubiaceae	Tree	P	Sarcochore	/	/	/	/	/	/	/	/	/	/	/	0	0	0	0	0.167	0	0	0	0	0.167	0.705	
258	Nesogordonia papaverifera (A. Chev.) Capuron ex N. Hall?	Malvaceae	Tree	SB	Pterochore	0.167	0	0	0	0	0.167	0	0	0	0	0.729	0.167	0.167	0	0.111	0.167	0.036	0.036	0	0.016	0.071	0.916	
259	Neuropeltis incompta R.D. Good	Convolvulaceae	Liana	SB	Pterochore	0	0.167	0	0	0	0	0.167	0	0	0	0.725	/	/	/	/	/	/	/	/	/	/	/	
260	Newbouldia laevis (P. Bureau) Seem. ex Bureau	Bignoniaceae	Tree	P	Pterochore	/	/	/	/	/	/	/	/	/	/	/	0	0	0	0.111	0	0	0	0	0.111	0	1	
261	Ochna calodendron Gilg & Mildbr.	Ochnaceae	Shrub	SB	Sclerochore	0	0	0	0	0.167	0	0	0	0	0.167	0.727	/	/	/	/	/	/	/	/	/	/	/	
262	Ochna sp.	Ochnaceae	Shrub	SB	Sclerochore	/	/	/	/	/	/	/	/	/	/	/	0	0	0	0.222	0.167	0	0	0	0.162	0.045	0.385	
263	Octolobus sp.	Malvaceae	Shrub	SB	Sclerochore	0	0	0	0.222	0	0	0	0	0.222	0	0.178	0	0.167	0	0.444	0.167	0	0.006	0	0.362	0.025	0.065	
264	Olax latifolia Engl.	Olacaceae	Shrub	SB	Sarcochore	0	0	0	0.222	0	0	0	0	0.222	0	0.173	/	/	/	/	/	/	/	/	/	/	/	
265	Olax sp.	Olacaceae	Shrub	SB	Sarcochore	/	/	/	/	/	/	/	/	/	/	/	0.167	0	0	0.222	0	0.071	0	0	0.127	0	0.478	
266	Omphalocarpum elatum Miers	Sapotaceae	Tree	SB	Barochore	0	0	0	0.111	0	0	0	0	0.111	0	1	0.167	0	0	0	0	0.167	0	0	0	0	0.738	
267	Omphalocarpum sp.	Sapotaceae	Tree	SB	Barochore	0.167	0	0	0	0	0.167	0	0	0	0	0.74	/	/	/	/	/	/	/	/	/	/	/	
268	Oncoba glauca (P. Beauv.) Planch.	Salicaceae	Tree	P	Ballochore	0.167	0.167	0	0.333	0	0.028	0.028	0	0.222	0	0.183	0	0.167	0	0.556	0.167	0	0.063	0	0.278	0.021	0.112	
269	Ongokea gore (Hua) Pierre	Olacaceae	Tree	NPLD	Sarcochore	/	/	/	/	/	/	/	/	/	/	/	0.167	0	0	0.111	0.5	0.036	0	0	0.016	0.321	0.082	
270	Oxyanthus formosus Hook. f.	Rubiaceae	Shrub	SB	Sarcochore	/	/	/	/	/	/	/	/	/	/	/	0.167	0	0	0	0	0.167	0	0	0	0	0.726	
271	Oxyanthus pallidus Hiern	Rubiaceae	Shrub	SB	Sarcochore	/	/	/	/	/	/	/	/	/	/	/	0	0	0	0.111	0	0	0	0	0.111	0	1	
272	Oxyanthus sp.	Rubiaceae	Shrub	SB	Sarcochore	/	/	/	/	/	/	/	/	/	/	/	0	0	0	0.111	0	0	0	0	0.111	0	1	
273	Palisota ambigua (P. Beauv.) C.B. Clarke	Commelinaceae	Herb	SB	Sarcochore	0.667	0.333	0.667	0.667	0.833	0.146	0.052	0.104	0.125	0.234	0.511	/	/	/	/	/	/	/	/	/	/	/	
274	Palisota mannii C.B. Clarke	Commelinaceae	Herb	SB	Sarcochore	0	0	0	0.111	0	0	0	0	0.111	0	1	/	/	/	/	/	/	/	/	/	/	/	
275	Palisota sp2	Commelinaceae	Herb	SB	Sarcochore	0.667	0.167	0.5	0.556	0	0.276	0.009	0.129	0.153	0	0.193	/	/	/	/	/	/	/	/	/	/	/	
276	Palisota sp3	Commelinaceae	Herb	SB	Sarcochore	0.167	0	0	0	0	0.167	0	0	0	0	0.721	/	/	/	/	/	/	/	/	/	/	/	
277	Pancovia laurentii (De Wild.) Gilg ex De Wild.	Sapindaceae	Tree	SB	Sarcochore	/	/	/	/	/	/	/	/	/	/	/	0.667	0.333	0.333	0.444	0.333	0.219	0.047	0.031	0.111	0.063	0.413	
278	Pancovia sp.	Sapindaceae	Tree	SB	Sarcochore	/	/	/	/	/	/	/	/	/	/	/	0	0	0.167	0.111	0	0	0	0.125	0.028	0	0.373	
279	Panda oleosa Pierre	Pandaceae	Tree	SB	Sarcochore	/	/	/	/	/	/	/	/	/	/	/	0.167	0.167	0.333	0	0	0.037	0.019	0.222	0	0	0.35	

280	Paracostus englerianus (K. Schum.) C. Specht	Costaceae	Herb	SB	Sarcochore	0	0	0	0.222	0	0	0	0	0.222	0	0.181	/	/	/	/	/	/	/	/	/	/	/	/	/
281	Parastrephia sp.					/	/	/	/	/	/	/	/	/	/	/	0	0.167	0	0	0	0	0.167	0	0	0	0	0.737	
282	Parinari excelsa Sabine	Chrysobalanaceae	Tree	NPLD	Sarcochore	/	/	/	/	/	/	/	/	/	/	/	0	0	0	0.111	0.167	0	0	0	0	0.044	0.1	0.594	
283	Parkia bicolor A. Chev.	Fabaceae	Tree	NPLD	Sarcochore	/	/	/	/	/	/	/	/	/	/	/	0	0	0	0	0.167	0	0	0	0	0	0.167	0.73	
284	Pauridiantha talbotii (Wernham) Ntore & Dessein	Rubiaceae	Tree	P	Sarcochore	/	/	/	/	/	/	/	/	/	/	/	0	0.167	0.167	0.111	0	0	0.063	0.063	0.028	0	0.828		
285	Pausinystalia johimbe (K. Schum.) Pierre	Rubiaceae	Tree	SB	Pterochore	/	/	/	/	/	/	/	/	/	/	/	0	0	0	0.111	0.167	0	0	0	0	0.044	0.1	0.589	
286	Pausinystalia macroceras (K. Schum.) Pierre	Rubiaceae	Tree	SB	Pterochore	0.167	0.167	0.167	0.222	0	0.028	0.028	0.056	0.074	0	0.929	0	0.167	0.167	0.889	0.333	0	0.004	0.077	0.365	0.034	0.106		
287	Pavetta sp.	Rubiaceae	Shrub		Sarcochore	/	/	/	/	/	/	/	/	/	/	/	0.167	0	0	0	0	0.167	0	0	0	0	0	0.74	
288	Pentaclethra macrophylla Benth.	Fabaceae	Tree	NPLD	Ballochore	0	0	0.333	0	0.333	0	0	0.167	0	0.167	0.582	0	0.5	0.5	0.333	0.667	0	0.125	0.1	0.1	0.167	0.745		
289	Pentadesma sp.	Clusiaceae	Tree	SB	Sarcochore	/	/	/	/	/	/	/	/	/	/	/	0.167	0	0	0	0	0.167	0.111	0	0	0	0.056	0.786	
290	Petersianthus macrocarpus (P. Beauv.) Liben	Lecythidaceae	Tree	NPLD	Pterochore	0.333	0	0	0.333	0.5	0.105	0	0	0.07	0.237	0.253	0	0.333	0.333	0.778	0.833	0	0.045	0.03	0.255	0.373	0.053		
291	Phyllocosmus africanus (Hook. f.) Klotzsch	Ixonanthaceae	Tree	SB	Sarcochore	0	0	0	0	0.167	0	0	0	0	0.167	0.74	0.167	0	0	0	0	0.167	0	0	0	0	0	0.739	
292	Piper guineense Schumacher & Thonn.	Piperaceae	Liana	SB	Sclerochore	0	0	0	0.111	0.167	0	0	0	0.044	0.1	0.6	/	/	/	/	/	/	/	/	/	/	/	/	
293	Piper sp.	Piperaceae	Liana	SB	Sclerochore	0.333	0	0	0	0	0.333	0	0	0	0	0.111	/	/	/	/	/	/	/	/	/	/	/	/	
294	Piptadeniastrum africanum (Hook. f.) Brenan	Fabaceae	Tree	NPLD	Pterochore	0	0	0.167	0.111	0	0	0	0.1	0.044	0	0.577	0	0	0.167	0.444	0.5	0	0	0.019	0.239	0.173	0.189		
295	Plesiostropha paniculata (Pax) Breteler	Euphorbiaceae	Shrub	P	Sarcochore	/	/	/	/	/	/	/	/	/	/	/	0	0	0	0.222	0	0	0	0	0	0.222	0	0.175	
296	Protomegalaria stapfiana (Beille) Hutch.	Phyllanthaceae	Tree	SB	Sclerochore	/	/	/	/	/	/	/	/	/	/	/	0.167	0	0	0	0	0.167	0	0	0	0	0	0.721	
297	Pseuderanthemum sp.	Acanthaceae	Herb	SB	Acanthocore	0	0.167	0	0	0.5	0	0.042	0	0	0.375	0.046	0	0	0	0	0	0.167	0	0	0	0	0.167	0.706	
298	Pseuderanthemum tunicatum (Afzel.) Milne-Redh.	Acanthaceae	Herb	SB	Acanthocore	0	0	0	0	0.167	0	0	0	0	0.167	0.739	/	/	/	/	/	/	/	/	/	/	/	/	
299	Psychotria densinervia (K. Krause) Verdc.	Rubiaceae	Shrub	NPLD	Sarcochore	0.333	0	0	0	0	0.333	0	0	0	0	0.109	0.5	0.167	0	0	0	0	0.4	0.033	0	0	0	0.05	
300	Psychotria fimbriatifolia R.D. Good	Rubiaceae	Shrub	NPLD	Sarcochore	0	0	0	0.111	0.167	0	0	0	0.044	0.1	0.595	/	/	/	/	/	/	/	/	/	/	/	/	
301	Psychotria globiceps K. Schum.	Rubiaceae	Shrub	NPLD	Sarcochore	/	/	/	/	/	/	/	/	/	/	/	0.167	0	0	0	0	0.167	0	0	0	0	0	0.714	
302	Psychotria sp.	Rubiaceae	Shrub	NPLD	Sarcochore	0.333	0.333	0.333	0.111	0.5	0.064	0.043	0.085	0.005	0.191	0.443	0.333	0	0	0.111	0.5	0.077	0	0	0.009	0.346	0.04		
303	Psychotria sp1	Rubiaceae	Shrub	NPLD	Sarcochore	0	0	0	0	0.167	0	0	0	0	0.167	0.73	/	/	/	/	/	/	/	/	/	/	/	/	
304	Psychdrax welwitschii (Hiern) O.Lachenaud Ined.	Rubiaceae	Shrub	P	Sarcochore	/	/	/	/	/	/	/	/	/	/	/	0	0.167	0	0	0	0	0.167	0	0	0	0.699		
305	Pteleopsis hyalodendron Mildbr.	Combretaceae	Tree	P	Pterochore	/	/	/	/	/	/	/	/	/	/	/	0	0	0.167	0.111	0	0	0	0.1	0.044	0	0.584		
306	Pteris sp.	Pteridaceae	Herb	SB	Sclerochore	0.5	0	0	0	0.167	0.375	0	0	0	0.042	0.067	/	/	/	/	/	/	/	/	/	/	/	/	
307	Pteris sp2	Pteridaceae	Herb	SB	Sclerochore	0	0	0.167	0	0	0	0	0	0.167	0	0	0.719	/	/	/	/	/	/	/	/	/	/	/	
308	Pterocarpus soyauxii Taub.	Fabaceae	Tree	NPLD	Pterochore	0	0	0	0	0.333	0	0	0	0	0.333	0.117	0	0.167	0.167	0.222	0.5	0	0.044	0.029	0.026	0.22	0.289		

309	<i>Pterocarpus</i> sp.	Fabaceae	Tree	NPLD	Pterochore	0	0	0	0	0.167	0	0	0	0	0.167	0.73	/	/	/	/	/	/	/	/	/	/	/	/	/
310	<i>Pterodo</i> sp.				Sclerochore	0	0.167	0.167	0.667	0	0	0.016	0.032	0.473	0	0.009	/	/	/	/	/	/	/	/	/	/	/	/	
311	<i>Pterygota macrocarpa</i> K. Schum.	Malvaceae	Tree	NPLD	Pterochore	/	/	/	/	/	/	/	/	/	/	/	0	0	0	0	0.167	0	0	0	0	0.167	0.759		
312	<i>Pycnanthus angolensis</i> (Welw.) Warb.	Myristicaceae	Tree	NPLD	Sarcochore	/	/	/	/	/	/	/	/	/	/	/	0	0.333	0.333	0.222	0.5	0	0.059	0.088	0.026	0.22	0.33		
313	<i>Radlkofera calodendron</i> Gilg	Sapindaceae	Tree	SB	Sarcochore	/	/	/	/	/	/	/	/	/	/	/	0	0	0.167	0	0	0	0	0.167	0	0	0.715		
314	<i>Raphia regalis</i> Becc.	Arecaceae	Herb	SB	Sarcochore	0	0	0.333	0.444	0	0	0	0.118	0.288	0	0.099	0	0	0	0.444	0	0	0	0	0.444	0	0.02		
315	<i>Rauvolfia vomitoria</i> Afzel.	Apocynaceae	Tree	P	Sarcochore	0	0	0	0	0.167	0	0	0	0	0.167	0.736	0	0	0.167	0	0.167	0	0	0	0.056	0	0.111	0.785	
316	<i>Renealmia</i> sp.	Zingiberaceae	Herb	SB	Sarcochore	0	0	0	0.111	0	0	0	0	0.111	0	1	/	/	/	/	/	/	/	/	/	/	/		
317	<i>Ricinodendron heudelotii</i> (Baill.) Pierre ex Heckel	Euphorbiaceae	Tree	P	Sarcochore	0	0.167	0	0	0	0	0.167	0	0	0	0.751	/	/	/	/	/	/	/	/	/	/	/		
318	<i>Rinorea cuspa</i> Baill.	Violaceae	Tree	SB	Sclerochore	0.333	0.167	0.5	0.333	0.333	0.061	0.01	0.092	0.068	0.122	0.882	0.833	0.667	1	0.778	0.5	0.138	0.057	0.298	0.124	0.146	0.403		
319	<i>Rinorea grandifolia</i> Melch.	Violaceae	Tree	SB	Sclerochore	/	/	/	/	/	/	/	/	/	/	/	0.333	0	0	0.333	0.167	0.148	0	0	0.111	0.037	0.545		
320	<i>Rinorea oblongifolia</i> (C. H. Wright) Marquand ex Chipp	Violaceae	Tree	SB	Sclerochore	/	/	/	/	/	/	/	/	/	/	/	0	0	0	0.111	0	0	0	0	0.111	0	1		
321	<i>Rodriopsis</i> sp.					0	0	0	0	0.167	0	0	0	0	0.167	0.733	/	/	/	/	/	/	/	/	/	/	/		
322	<i>Rothmannia hispida</i> (K. Schum.) Fagerl.	Rubiaceae	Shrub	SB	Sarcochore	/	/	/	/	/	/	/	/	/	/	/	0.167	0	0	0	0	0.167	0	0	0	0	0.727		
323	<i>Rothmannia lujae</i> (De Wild.) Keay	Rubiaceae	Tree	SB	Sarcochore	/	/	/	/	/	/	/	/	/	/	/	0.333	0	0.333	0.667	0.167	0.086	0	0.086	0.267	0.014	0.14		
324	<i>Rothmannia octomera</i> (Hook.) Fagerl.	Rubiaceae	Shrub	SB	Sarcochore	/	/	/	/	/	/	/	/	/	/	/	0	0.167	0	0	0	0	0	0.167	0	0	0.745		
325	<i>Rothmannia</i> sp.	Rubiaceae	Shrub	SB	Sarcochore	0	0	0	0.222	0	0	0	0	0.222	0	0.21	0	0	0.333	0.111	0	0	0	0.273	0.02	0	0.098		
326	<i>Rothmannia</i> sp1	Rubiaceae	Shrub	SB	Sarcochore	/	/	/	/	/	/	/	/	/	/	/	0.333	0	0	0.111	0.333	0.143	0	0	0.016	0.143	0.674		
327	<i>Rothmannia</i> sp2	Rubiaceae	Shrub	SB	Sarcochore	/	/	/	/	/	/	/	/	/	/	/	0.333	0	0.167	0	0	0.222	0	0.056	0	0	0.342		
328	<i>Rothmannia</i> sp3	Rubiaceae	Shrub	SB	Sarcochore	/	/	/	/	/	/	/	/	/	/	/	0	0	0.333	0.111	0	0	0	0.25	0.028	0	0.144		
329	<i>Rothmannia</i> sp4	Rubiaceae	Shrub	SB	Sarcochore	/	/	/	/	/	/	/	/	/	/	/	0	0	0	0.111	0	0	0	0	0.111	0	1		
330	<i>Roureopsis</i> sp.	Connaraceae	Shrub	SB	Sarcochore	0	0	0	0	0.167	0	0	0	0	0.167	0.743	/	/	/	/	/	/	/	/	/	/	/		
331	<i>Rytigynia</i> sp.	Rubiaceae	Shrub		Sarcochore	0	0	0.167	0	0	0	0	0.167	0	0	0.714	/	/	/	/	/	/	/	/	/	/	/		
332	<i>Sabicea</i> sp.	Rubiaceae	Liana	P	Sarcochore	0	0	0.167	0.111	0	0	0	0.125	0.028	0	0.399	/	/	/	/	/	/	/	/	/	/	/		
333	<i>Salacia</i> sp.	Celastraceae	Liana	P	Sarcochore	/	/	/	/	/	/	/	/	/	/	/	0	0	0	0.111	0	0	0	0	0.111	0	1		
334	<i>Santiria trimera</i> (Oliv.) Aubr'v.	Burserraceae	Tree	SB	Sarcochore	0.167	0	0	0.111	0.333	0.038	0	0	0.034	0.154	0.419	0.333	0	0.333	0.667	0.667	0.027	0	0.041	0.18	0.351	0.077		
335	<i>Schumanniphyton magnificum</i> (K. Schum.) Harms	Rubiaceae	Shrub	SB	Sarcochore	0	0	0	0.111	0	0	0	0	0.111	0	1	0.333	0.167	0	0	0.333	0.148	0.019	0	0	0.148	0.679		
336	<i>Sclerosperma mannii</i> H. Wendl.	Arecaceae	Herb	NPLD	Sarcochore	0	0	0	0.111	0	0	0	0	0.111	0	1	/	/	/	/	/	/	/	/	/	/	/		
337	<i>Scorodophloeus zenkeri</i> Harms	Fabaceae	Tree	SB	Ballochore	0	0	0	0	0.167	0	0	0	0	0.167	0.743	0	0	0	0	0.167	0	0	0	0	0.167	0.725		
338	<i>Scyphanthus</i> sp.					0	0	0	0.111	0	0	0	0	0.111	0	1	/	/	/	/	/	/	/	/	/	/	/		
339	<i>Sida</i> sp.	Malvaceae	Herb	P	Sclerochore	/	/	/	/	/	/	/	/	/	/	/	0	0.167	0	0	0	0	0	0.167	0	0	0.721		
340	<i>Sorindeia grandifolia</i> Engl.	Anacardiaceae	Tree	SB	Sarcochore	0.167	0	0	0	0	0.167	0	0	0	0	0.741	0.333	0	0	0.333	0	0.185	0	0	0.148	0	0.293		
341	<i>Sorindeia</i> sp.	Anacardiaceae	Tree	SB	Sarcochore	/	/	/	/	/	/	/	/	/	/	/	0.167	0.167	0	0	0	0	0.111	0.056	0	0	0	0.805	

342	<i>Staudtia kamerunensis</i> var. gabonensis (Warb.) Fouillouy	Myristicaceae	Tree	SB	Sarcochore	/	/	/	/	/	/	/	/	/	/	/	0.5	0	0.333	0.222	0.167	0.205	0	0.091	0.04	0.023	0.358
343	<i>Stenandrium guineense</i> (Nees) Vollesen	Acanthaceae	Herb	SB	Acanthocore	0	0	0.167	0	0	0	0	0.167	0	0	0.726	/	/	/	/	/	/	/	/	/	/	/
344	<i>Sterculia</i> sp1	Malvaceae			Ballochore	0	0	0.333	0.444	0	0	0	0.143	0.254	0	0.19	0.167	0.333	0	0.222	0	0.038	0.154	0	0.068	0	0.376
345	<i>Sterculia</i> sp2	Malvaceae			Ballochore	/	/	/	/	/	/	/	/	/	/	/	0.167	0	0	0	0	0.167	0	0	0	0	0.741
346	<i>Sterculia tragacantha</i> Lindl.	Malvaceae	Tree	P	Pterochore	/	/	/	/	/	/	/	/	/	/	/	0.167	0.167	0.167	0	0	0.056	0.056	0.056	0	0	1
347	<i>Strebilus usambarensis</i> (Engl.) C. C. Berg	Moraceae	Tree	SB	Sarcochore	0	0	0	0.222	0.5	0	0	0	0.04	0.409	0.008	0	0.167	0	0.222	0.667	0	0.003	0	0.015	0.611	0.002
348	<i>Strombosia pustulata</i> Oliv.	Olacaceae	Tree	SB	Sarcochore	0.333	0	0.5	0.556	0.5	0.051	0	0.115	0.171	0.154	0.709	0.667	0.667	0.667	0.667	0.5	0.214	0.107	0.161	0.131	0.04	0.752
349	<i>Strombosia scheffleri</i> Engl.	Olacaceae	Tree	SB	Sarcochore	0	0	0	0.222	0.167	0	0	0	0.162	0.045	0.382	0.5	0.167	0	0.556	0.167	0.225	0.013	0	0.222	0.013	0.325
350	<i>Strombosia</i> sp.	Olacaceae	Tree	SB	Sarcochore	0.667	0.167	0	0	0	0.533	0.033	0	0	0	0.01	0.167	0	0.167	0	0	0.083	0	0.083	0	0	1
351	<i>Strombosiopsis tetrandra</i> Engl.	Olacaceae	Tree	SB	Sarcochore	0.5	0.167	0.167	0.333	0.167	0.188	0.021	0.021	0.083	0.021	0.332	0.833	0.667	0.667	0.667	0.333	0.268	0.161	0.143	0.095	0.027	0.294
352	<i>Strophanthus</i> sp.	Apocynaceae	Liana	P	Pogonochore	0	0	0	0.222	0	0	0	0	0.222	0	0.18	0	0	0	0.111	0	0	0	0	0.111	0	1
353	<i>Strychnos arborea</i> A.W.Hill.	Loganiaceae	Tree	SB	Barochore	/	/	/	/	/	/	/	/	/	/	/	0	0	0	0	0.167	0	0	0	0	0.167	0.728
354	<i>Strychnos</i> sp.	Loganiaceae	Tree	SB	Barochore	0	0	0.167	0.333	0.167	0	0	0.05	0.133	0.05	0.669	0	0.167	0.333	0.444	0.167	0	0.041	0.081	0.192	0.014	0.402
355	<i>Symphonia globulifera</i> L. f.	Clusiaceae	Tree	SB	Sarcochore	/	/	/	/	/	/	/	/	/	/	/	0	0	0	0.222	0	0	0	0	0.222	0	0.175
356	<i>Synsepalum dulcificum</i> (Schumach. & Thonn.) Daniell	Sapotaceae	Tree	SB	Sarcochore	/	/	/	/	/	/	/	/	/	/	/	0	0.167	0	0	0.167	0	0.083	0	0	0.083	1
357	<i>Syzygium rowlandii</i> Sprague	Myrtaceae	Tree	SB	Sarcochore	/	/	/	/	/	/	/	/	/	/	/	0	0	0	0	0.167	0	0	0	0	0.167	0.719
358	<i>Tabernaemontana crassa</i> Benth.	Apocynaceae	Tree	SB	Sarcochore	0.333	0.5	0	0.222	0.333	0.065	0.228	0	0.019	0.087	0.206	0.667	0.833	1	0.889	1	0.123	0.132	0.21	0.197	0.225	0.822
359	<i>Terminalia superba</i> Engl. & Diels	Combretaceae	Tree	P	Pterochore	0	0.167	0	0	0	0	0.167	0	0	0	0.73	/	/	/	/	/	/	/	/	/	/	/
360	<i>Tessmannia africana</i> Harms	Fabaceae	Tree	NPLD	Ballochore	/	/	/	/	/	/	/	/	/	/	/	0.167	0	0	0	0.167	0.083	0	0	0	0.083	1
361	<i>Tessmannia anomala</i> (Micheli) Harms	Fabaceae	Tree	NPLD	Ballochore	0.167	0	0	0	0	0.167	0	0	0	0	0.705	0.167	0	0	0	0	0.167	0	0	0	0	0.697
362	<i>Tetracera alnifolia</i> subsp. dinklagei (Gilg) Kubitzki	Dilleniaceae	Liana	NPLD	Sarcochore	0	0.167	0.167	0.556	0.167	0	0.022	0.022	0.338	0.022	0.063	0.167	0.167	0.333	0.222	0	0.045	0.045	0.091	0.04	0	0.94
363	<i>Tetracera scandens</i> (L.) Merr.	Dilleniaceae	Liana	NPLD	Sarcochore	/	/	/	/	/	/	/	/	/	/	/	0.333	0	0	0	0	0.333	0	0	0	0	0.118
364	<i>Tetracera</i> sp.	Dilleniaceae	Liana	NPLD	Sarcochore	/	/	/	/	/	/	/	/	/	/	/	0	0.167	0.167	0.222	0	0	0.042	0.042	0.111	0	0.704
365	<i>Tetrapleura tetraptera</i> (Schumach. & Thonn.) Taub.	Fabaceae	Tree	P	Sarcochore	/	/	/	/	/	/	/	/	/	/	/	0	0	0.167	0.222	0.167	0	0	0.05	0.089	0.05	0.794
366	<i>Tetrorchidium didymostemon</i> (Baill.) Pax & K. Hoffm.	Euphorbiaceae	Tree	P	Sarcochore	/	/	/	/	/	/	/	/	/	/	/	0	0	0	0	0.167	0	0	0	0	0.167	0.732
367	<i>Tetrorchidium</i> sp.	Euphorbiaceae	Tree	P	Sarcochore	0	0	0	0	0.167	0	0	0	0	0.167	0.729	/	/	/	/	/	/	/	/	/	/	/
368	<i>Thalia geniculata</i> L.	Marantaceae	Herb	P	Sclerochore	0.333	0	0	0	0.167	0.222	0	0	0	0.056	0.324	/	/	/	/	/	/	/	/	/	/	/
369	<i>Theobroma cacao</i> L.	Malvaceae	Tree	SB	Sarcochore	/	/	/	/	/	/	/	/	/	/	/	0	0	0	0	0.167	0	0	0	0	0.167	0.717
370	<i>Treculia obovoidea</i> N.E. Br.	Moraceae	Tree	SB	Sarcochore	/	/	/	/	/	/	/	/	/	/	/	0	0.167	0	0	0.167	0	0.163	0	0	0.004	0.79
371	<i>Treculia</i> sp.	Moraceae	Tree	SB	Sarcochore	0	0	0.167	0	0	0	0	0.167	0	0	0.732	/	/	/	/	/	/	/	/	/	/	/
372	<i>Trema orientalis</i> (L.) Blume	Cannabaceae	Tree	P	Sarcochore	0	0	0	0	0.167	0	0	0	0	0.167	0.717	/	/	/	/	/	/	/	/	/	/	/

373	<i>Tricalysia</i> sp.	Rubiaceae	Shrub	SB	Sarcochore	0	0	0	0.111	0	0	0	0	0.111	0	1	/	/	/	/	/	/	/	/	/	/	/	/
374	<i>Trichilia dregeana</i> Sond.	Meliaceae	Tree	SB	Sarcochore	0	0	0	0	0.167	0	0	0	0	0.167	0.733	0	0	0	0.333	0.5	0	0	0	0	0.083	0.375	0.024
375	<i>Trichilia gilgiana</i> Harms	Meliaceae	Tree	SB	Sarcochore	/	/	/	/	/	/	/	/	/	/	/	0	0	0.167	0	0	0	0	0	0.167	0	0	0.722
376	<i>Trichilia obovata</i> W. Palacios.	Meliaceae	Tree	SB	Sarcochore	/	/	/	/	/	/	/	/	/	/	/	0	0.167	0	0	0	0	0	0.167	0	0	0	0.727
377	<i>Trichilia prieuriana</i> A. Juss.	Meliaceae	Tree	SB	Sarcochore	0	0.167	0.5	0	0	0	0.042	0.375	0	0	0.052	0.333	0.333	0.5	0.333	0.167	0.093	0.056	0.139	0.037	0.028	0.86	
378	<i>Trichilia rubescens</i> Oliv.	Meliaceae	Tree	SB	Sarcochore	/	/	/	/	/	/	/	/	/	/	/	0	0	0	0.111	0	0	0	0	0.111	0	1	
379	<i>Trichilia</i> sp.	Meliaceae	Tree	SB	Sarcochore	0.167	0.5	0	0.111	0.167	0.025	0.225	0	0.011	0.05	0.24	0	0.833	0.167	0.556	0.167	0	0.522	0.007	0.083	0.03	0.005	
380	<i>Trichilia tessmannii</i> Harms	Meliaceae	Tree	SB	Sarcochore	/	/	/	/	/	/	/	/	/	/	/	0	0.167	0.167	0.333	0	0	0.028	0.083	0.111	0	0.646	
381	<i>Trichilia welwitschii</i> C. DC.	Meliaceae	Tree	SB	Sarcochore	0	0.333	0	0.222	0	0	0.167	0	0.111	0	0.401	0.333	0.667	0.833	0.556	0	0.053	0.255	0.186	0.13	0	0.313	
382	<i>Trichoscypha acuminata</i> Engl.	Anacardiaceae	Tree	NPLD	Sarcochore	/	/	/	/	/	/	/	/	/	/	/	0.167	0	0	0.222	0.167	0.094	0	0	0.056	0.031	0.785	
383	<i>Trichoscypha arborea</i> (A. Chev.) A. Chev.	Anacardiaceae	Tree	NPLD	Sarcochore	/	/	/	/	/	/	/	/	/	/	/	0	0	0	0	0.167	0	0	0	0	0.167	0.717	
384	<i>Trichoscypha oddonii</i> De Wild.	Anacardiaceae	Tree	NPLD	Sarcochore	/	/	/	/	/	/	/	/	/	/	/	0	0	0	0.111	0	0	0	0	0.111	0	1	
385	<i>Trichoscypha</i> sp.	Anacardiaceae	Tree	NPLD	Sarcochore	/	/	/	/	/	/	/	/	/	/	/	0.167	0.167	0	0	0	0.083	0.083	0	0	0	1	
386	<i>Trichostachys aurea</i> Hiern	Rubiaceae	Shrub	SB	Sarcochore	0	0	0	0.222	0	0	0	0	0.222	0	0.181	/	/	/	/	/	/	/	/	/	/	/	
387	<i>Triclisia</i> sp.	Menispermaceae	Shrub	SB	Sarcochore	0	0	0	0.111	0	0	0	0	0.111	0	1	/	/	/	/	/	/	/	/	/	/	/	
388	<i>Trilepistium madagascariense</i> DC.	Moraceae	Tree	NPLD	Sarcochore	/	/	/	/	/	/	/	/	/	/	/	0	0	0	0	0.167	0	0	0	0	0.167	0.725	
389	<i>Turraeanthus africanus</i> (Welw. ex C. DC.) Pellegr.	Meliaceae	Tree	SB	Sarcochore	/	/	/	/	/	/	/	/	/	/	/	0	0	0	0	0.5	0	0	0	0	0.5	0.013	
390	<i>Uapaca lissopyrena</i> Radcl.-Sm.	Phyllanthaceae	Tree	P	Sarcochore	0.333	0	0	0.111	0.167	0.087	0	0	0.01	0.109	0.8	0.333	0.167	0.167	0.444	0.333	0.114	0.029	0.014	0.102	0.057	0.91	
391	<i>Uapaca mole</i> Pax	Phyllanthaceae	Tree	P	Sarcochore	0	0	0	0.222	0.167	0	0	0	0.183	0.029	0.307	0.5	0.667	0.5	0.444	0.167	0.114	0.273	0.068	0.081	0.008	0.244	
392	<i>Uapaca</i> sp.	Phyllanthaceae	Tree	P	Sarcochore	0	0	0	0.333	0	0	0	0	0.333	0	0.027	/	/	/	/	/	/	/	/	/	/	/	
393	<i>Uapaca staudtii</i> Pax	Phyllanthaceae	Tree	P	Sarcochore	0.167	0	0	0	0	0.167	0	0	0	0	0.738	0.333	0	0	0	0	0.333	0	0	0	0	0.103	
394	<i>Urena</i> sp.	Malvaceae	Herb	P	Sclerochore	0	0	0	0	0.167	0	0	0	0	0.167	0.748	/	/	/	/	/	/	/	/	/	/	/	
395	<i>Urera repens</i> (Wedd.) Rendle	Urticaceae	Herb	P	Sclerochore	0	0	0.167	0	0	0	0	0.167	0	0	0.736	/	/	/	/	/	/	/	/	/	/	/	
396	<i>Uvaria</i> sp.	Annonaceae	Shrub	SB	Sarcochore	0.167	0	0	0	0	0.167	0	0	0	0	0.737	/	/	/	/	/	/	/	/	/	/	/	
397	<i>Uvaria</i> sp1	Annonaceae	Shrub	SB	Sarcochore	/	/	/	/	/	/	/	/	/	/	/	0.333	0	0	0	0	0.333	0	0	0	0	0.11	
398	<i>Uvaria</i> sp2	Annonaceae	Shrub	SB	Sarcochore	/	/	/	/	/	/	/	/	/	/	/	0.167	0	0	0	0	0.167	0	0	0	0	0.717	
399	<i>Uvariastrum pierreanum</i> Engl.	Annonaceae	Tree	SB	Sarcochore	/	/	/	/	/	/	/	/	/	/	/	0.167	0.167	0	0	0	0.111	0.056	0	0	0	0.786	
400	<i>Uvariastrum</i> sp1	Annonaceae	Tree	SB	Sarcochore	/	/	/	/	/	/	/	/	/	/	/	0	0.167	0	0.111	0	0	0.1	0	0.044	0	0.627	
401	<i>Uvariadendron</i> sp.	Annonaceae	Shrub	SB	Sarcochore	/	/	/	/	/	/	/	/	/	/	/	0	0.167	0	0	0	0	0.167	0	0	0	0.734	
402	<i>Ventilago</i> sp.	Rhamnaceae	Shrub	NPLD	Pterochore	0	0	0	0.111	0	0	0	0	0.111	0	1	/	/	/	/	/	/	/	/	/	/	/	
403	<i>Vepres louisii</i> G.C.C. Gilbert	Rutaceae	Shrub	SB	Sarcochore	0	0	0.167	0.111	0	0	0	0.136	0.02	0	0.373	0.5	0.333	0.667	0.444	0.167	0.123	0.027	0.274	0.097	0.007	0.22	
404	<i>Vitex</i> sp.	Lamiaceae	Tree	P	Sarcochore	/	/	/	/	/	/	/	/	/	/	/	0	0	0	0.111	0	0	0	0	0.111	0	1	
405	<i>Voacanga africana</i> Stapf	Apocynaceae	Shrub	P	Sarcochore	/	/	/	/	/	/	/	/	/	/	/	0.333	0	0	0	0.667	0.067	0	0	0	0.533	0.007	

406	Voacanga sp1	Apocynaceae	Shrub	P	Sarcochore	/	/	/	/	/	/	/	/	/	/	/	0.167	0	0	0	0	0.167	0	0	0	0	0.748	
407	Voacanga sp2	Apocynaceae	Shrub	P	Sarcochore	/	/	/	/	/	/	/	/	/	/	/	0.167	0	0	0	0	0.167	0	0	0	0	0.745	
408	Warneckea sp.	Melastomataceae	Shrub	SB	Sarcochore	0.167	0.167	0.333	0	0.167	0.033	0.033	0.133	0	0.033	0.819	0.167	0	0.5	0.111	0.333	0.013	0	0.237	0.006	0.132	0.218	
409	Whitfieldia elongata (P. Beauv.) De Wild. & T. Durand	Acanthaceae	Shrub	SB	Acanthocore	0.333	0.5	0.5	0.111	0	0.043	0.128	0.223	0.019	0	0.314	0.167	0	0	0	0	0.167	0	0	0	0	0.713	
410	Xylopia aethiopica (Dunal) A. Rich.	Annonaceae	Tree	P	Sarcochore	0.167	0	0.167	0.111	0	0.063	0	0.063	0.028	0	0.839	0.333	0.167	0	0.333	0.167	0.111	0.028	0	0.111	0.028	0.608	
411	Xylopia aurantioidora De Wild. & T. Durand	Annonaceae	Tree	NPLD	Sarcochore	/	/	/	/	/	/	/	/	/	/	/	0	0	0	0.111	0	0	0	0	0.111	0	1	
412	Xylopia hypolampra Mildbr.	Annonaceae	Tree	P	Sarcochore	/	/	/	/	/	/	/	/	/	/	/	0	0	0.333	0.222	0	0	0	0	0.167	0.111	0	0.393
413	Xylopia letestui Pellegr.	Annonaceae	Tree	NPLD	Sarcochore	/	/	/	/	/	/	/	/	/	/	/	0	0	0	0.111	0	0	0	0	0.111	0	1	
414	Xylopia sp.	Annonaceae	Tree	NPLD	Sarcochore	0	0.167	0.167	0	0	0	0.083	0.083	0	0	1	/	/	/	/	/	/	/	/	/	/	/	
415	Zanthoxylum heitzii (Aubr?v. & Pellegr.) P. G. Waterman	Rutaceae	Tree	P	Sarcochore	/	/	/	/	/	/	/	/	/	/	/	0	0	0.167	0	0	0	0	0	0.167	0	0	0.74
416	Zanthoxylum sp.	Rutaceae	Tree	NPLD	Sarcochore	/	/	/	/	/	/	/	/	/	/	/	0.167	0	0	0.111	0	0.1	0	0	0.044	0	0.6	
417	Zanthoxylum sp1	Rutaceae	Tree	NPLD	Sarcochore	/	/	/	/	/	/	/	/	/	/	/	0	0	0.167	0.222	0	0	0	0.071	0.127	0	0.497	
418	Zingiber sp.	Zingiberaceae	Herb	SB	Sarcochore	0	0.167	0	0	0	0	0.167	0	0	0	0.721	/	/	/	/	/	/	/	/	/	/	/	

Table S2: Similarity (Sorensen's index) of species composition between different land use types within the stratum of individuals with dbh<1 cm and dbh between 1 and 10 cm

	Stratum dbh<1				Stratum dbh1-10			
	Protected area	Unlogged forest	Forest logged 10 to 15 years ago	Forest logged less than 5 years ago	Protected area	Unlogged forest	Logged forest 10 to 15 years	Forest logged less than 5 years ago
Unlogged forest	0.52				0.50			
Forest logged 10 to 15 years ago	0.39	0.51			0.51	0.57		
Forest logged less than 5 years ago	0.40	0.40	0.39		0.55	0.52	0.54	
Community forest	0.47	0.44	0.29	0.42	0.48	0.49	0.51	0.58

Table S3: Relative frequency, IndVal and significance value for the seedling, sapling, small tree and large tree strata													
ID	Species	Regeneration guilds	Dispersal syndromes	Families	Relative frequency				IndVal				p
					Seedling	Sapling	Small trees	Large trees	Seedling	Sapling	Small trees	Large trees	
1	<i>Albizia</i> sp.	P	Pterochore	Fabaceae	0.061	0	0	0	0.061	0	0	0	ns
2	<i>Belonophora coriacea</i> Hoyle	SB	Sarcochore	Rubiaceae	0.03	0	0	0	0.03	0	0	0	ns
3	<i>Desbordesia glaucescens</i> (Engl.) Tiegh.	NPLD	Pterochore	Irvingiaceae	0.03	0	0	0	0.03	0	0	0	ns
4	<i>Omphalocarpum</i> sp.	SB	Barochore	Sapotaceae	0.03	0	0	0	0.03	0	0	0	ns
5	<i>Tetrorchidium</i> sp.	P	Sarcochore	Euphorbiaceae	0.03	0	0	0	0.03	0	0	0	ns
6	<i>Treculia</i> sp.	SB	Sarcochore	Moraceae	0.03	0	0	0	0.03	0	0	0	ns
7	<i>Trema orientalis</i> (L.) Blume	P	Sarcochore	Cannabaceae	0.03	0	0	0	0.03	0	0	0	ns
8	<i>Azelia</i> sp.	NPLD	Sarcochore	Fabaceae	0	0.03	0	0	0	0.03	0	0	ns
9	<i>Albizia laurentii</i> De Wild.	P	Pterochore	Fabaceae	0	0.03	0	0	0	0.03	0	0	ns
10	<i>Angylocalyx</i> sp1	SB	Sarcochore	Fabaceae	0	0.121	0	0	0	0.121	0	0	0.015
11	<i>Carapa</i> sp2	SB	Sarcochore	Meliaceae	0	0.061	0	0	0	0.061	0	0	ns
12	<i>Chytranthus</i> sp2	SB	Sarcochore	Sapindaceae	0	0.03	0	0	0	0.03	0	0	ns
13	<i>Cleianthus</i> sp.	SB			0	0.03	0	0	0	0.03	0	0	ns
14	<i>Corynanthe johimbe</i> (K. Schum.) Pierre	SB	Pterochore	Rubiaceae	0	0.061	0	0	0	0.061	0	0	ns
15	<i>Coula edulis</i> Baill.	SB	Sarcochore	Olacaceae	0	0.03	0	0	0	0.03	0	0	ns
16	<i>Dictyandra</i> sp.	SB	Sarcochore	Rubiaceae	0	0.03	0	0	0	0.03	0	0	ns
17	<i>Drypetes afzelii</i> (Pax) Hutch.	SB	Sarcochore	Putranjivaceae	0	0.03	0	0	0	0.03	0	0	ns
18	<i>Drypetes ituriensis</i> Pax & K. Hoffm.	SB	Sarcochore	Putranjivaceae	0	0.061	0	0	0	0.061	0	0	ns
19	<i>Drypetes</i> sp1	SB	Sarcochore	Putranjivaceae	0	0.212	0	0	0	0.212	0	0	0.002
20	<i>Duguetia</i> sp.	NPLD	Barochore	Annonaceae	0	0.121	0	0	0	0.121	0	0	0.009
21	<i>Entandrophragma</i> sp.	NPLD	Pterochore	Meliaceae	0	0.03	0	0	0	0.03	0	0	ns
22	<i>Eriocoelum petiolare</i> Radlk.	SB	Sarcochore	Sapindaceae	0	0.061	0	0	0	0.061	0	0	ns
23	<i>Eriocoelum</i> sp.	SB	Sarcochore	Sapindaceae	0	0.03	0	0	0	0.03	0	0	ns
24	<i>Garcinia ovalifolia</i> Oliv.	SB	Sarcochore	Clusiaceae	0	0.03	0	0	0	0.03	0	0	ns
25	<i>Garcinia preussii</i> Engl.	SB	Sarcochore	Clusiaceae	0	0.03	0	0	0	0.03	0	0	ns
26	<i>Homalium africanum</i> (Hook. f.) Benth.	SB	Sclerochore	Salicaceae	0	0.03	0	0	0	0.03	0	0	ns
27	<i>Macaranga</i> sp1	P	Sarcochore	Euphorbiaceae	0	0.03	0	0	0	0.03	0	0	ns
28	<i>Monodora</i> sp.	SB	Barochore	Annonaceae	0	0.091	0	0	0	0.091	0	0	ns
29	<i>Newbouldia laevis</i> (P. Beauv.) Seem. ex Bureau	P	Pterochore	Bignoniaceae	0	0.03	0	0	0	0.03	0	0	ns
30	<i>Pancovia</i> sp.	SB	Sarcochore	Sapindaceae	0	0.061	0	0	0	0.061	0	0	ns

31	<i>Pauridiantha talbotii</i> (Wernham) Ntore & Dessein	P	Sarcochore	Rubiaceae	0	0.091	0	0	0	0.091	0	0	ns
32	<i>Protomegalaria stapfiana</i> (Beille) Hutch.	SB	Sclerochore	Phyllanthaceae	0	0.03	0	0	0	0.03	0	0	ns
33	<i>Radikofera calodendron</i> Gilg	SB	Sarcochore	Sapindaceae	0	0.03	0	0	0	0.03	0	0	ns
34	<i>Theobroma cacao</i> L.	SB	Sarcochore	Malvaceae	0	0.03	0	0	0	0.03	0	0	ns
35	<i>Xylopietlestui</i> Pellegr.	NPLD	Sarcochore	Annonaceae	0	0.03	0	0	0	0.03	0	0	ns
36	<i>Trichilia gilgiana</i> Harms	SB	Sarcochore	Meliaceae	0	0.03	0	0	0	0.03	0	0	ns
37	<i>Trichilia</i> sp3	SB	Sarcochore	Meliaceae	0	0.03	0	0	0	0.03	0	0	ns
38	<i>Uvariastrum</i> sp1	SB	Sarcochore	Annonaceae	0	0.061	0	0	0	0.061	0	0	ns
39	<i>Allophylus africanus</i> P. Beauv.	SB	Sarcochore	Sapindaceae	0	0	0.061	0	0	0	0.061	0	ns
40	<i>Angylocalyx</i> sp2	SB	Sarcochore	Fabaceae	0	0	0.03	0	0	0	0.03	0	ns
41	<i>Anthonotha fragrans</i> (Baker f.) Exell & Hillc.	SB	Ballochore	Fabaceae	0	0	0.061	0	0	0	0.061	0	ns
42	<i>Anthonotha</i> sp2	SB	Ballochore	Fabaceae	0	0	0.03	0	0	0	0.03	0	ns
43	<i>Antiaris toxicaria</i> Lesch.	P	Sarcochore	Moraceae	0	0	0.061	0	0	0	0.061	0	ns
44	<i>Antrocaryon micraster</i> A. Chev. & Guillaumin	P	Sarcochore	Anacardiaceae	0	0	0.121	0	0	0	0.121	0	0.013
45	<i>Balanites wilsoniana</i> Dawe & Sprague	NPLD	Sarcochore	Zygophyllaceae	0	0	0.03	0	0	0	0.03	0	ns
46	<i>Baphia pubescens</i> Hook. f.	SB	Ballochore	Fabaceae	0	0	0.091	0	0	0	0.091	0	0.05
47	<i>Beilschmiedia anacardioides</i> (Engl. & K. Krause) Robyns & Wilczek	SB	Sarcochore	Lauraceae	0	0	0.03	0	0	0	0.03	0	ns
48	<i>Berlinia bracteosa</i> Benth.	NPLD	Ballochore	Fabaceae	0	0	0.03	0	0	0	0.03	0	ns
49	<i>Brenania brieyi</i> (De Wild.) E.M.A. Petit	SB	Sarcochore	Rubiaceae	0	0	0.121	0	0	0	0.121	0	0.014
50	<i>Brevia sericea</i> Aubr?v. & Pellegr.	SB	Sarcochore	Sapotaceae	0	0	0.03	0	0	0	0.03	0	ns
51	<i>Caloncoba crepiniana</i> (De Wild. & T.Durand) Gilg	P	Ballochore	Achariaceae	0	0	0.03	0	0	0	0.03	0	ns
52	<i>Casearia</i> sp.		Sarcochore	Salicaceae	0	0	0.121	0	0	0	0.121	0	0.014
53	<i>Cassia</i> sp.	P	Barochore	Fabaceae	0	0	0.03	0	0	0	0.03	0	ns
54	<i>Chlamydocola chlamydantha</i> (K. Schum.) M. Bodard	SB	Sarcochore	Malvaceae	0	0	0.061	0	0	0	0.061	0	ns
55	<i>Chytranthus gilletii</i> De Wild.	SB	Sarcochore	Sapindaceae	0	0	0.061	0	0	0	0.061	0	ns
56	<i>Cola heterophylla</i> (P. Beauv.) Schott & Endl.	SB	Sarcochore	Malvaceae	0	0	0.061	0	0	0	0.061	0	ns
57	<i>Cola nitida</i> (Vent.) Schott & Endl.	SB	Sarcochore	Malvaceae	0	0	0.03	0	0	0	0.03	0	ns
58	<i>Crudia</i> sp.	SB	Ballochore	Fabaceae	0	0	0.03	0	0	0	0.03	0	ns
59	<i>Daniellia ogea</i> (Harms) Rolfe	NPLD	Pterochore	Fabaceae	0	0	0.03	0	0	0	0.03	0	ns
60	<i>Dialium dinklagei</i> Harms	SB	Sarcochore	Fabaceae	0	0	0.121	0	0	0	0.121	0	0.021
61	<i>Dichostemma glaucescens</i> Pierre	SB	Sarcochore	Euphorbiaceae	0	0	0.121	0	0	0	0.121	0	0.017
62	<i>Drypetes grandifolia</i> (C.B.Rob.) Pax & K. Hoffm.	SB	Sarcochore	Putranjivaceae	0	0	0.03	0	0	0	0.03	0	ns
63	<i>Eriocoelum macrocarpum</i> Gilg ex Radlk.	SB	Sarcochore	Sapindaceae	0	0	0.121	0	0	0	0.121	0	0.016
64	<i>Eriocoelum oblongum</i> Keay	SB	Sarcochore	Sapindaceae	0	0	0.061	0	0	0	0.061	0	ns

65	<i>Eugenia</i> sp.	P	Sarcochore	Myrtaceae	0	0	0.03	0	0	0	0.03	0	ns
66	<i>Ficus vogeliana</i> (Miq.) Miq.	P	Sarcochore	Moraceae	0	0	0.03	0	0	0	0.03	0	ns
67	<i>Garcinia kola</i> Heckel	SB	Sarcochore	Clusiaceae	0	0	0.03	0	0	0	0.03	0	ns
68	<i>Garcinia staudtii</i> Engl.	SB	Sarcochore	Clusiaceae	0	0	0.03	0	0	0	0.03	0	ns
69	<i>Glyphaea brevis</i> (Spreng.) Monach.	SB	Ballochore	Malvaceae	0	0	0.091	0	0	0	0.091	0	ns
70	<i>Heinsia crinita</i> (Afzel.) G. Taylor	SB	Sarcochore	Rubiaceae	0	0	0.03	0	0	0	0.03	0	ns
71	<i>Holoptelea grandis</i> (Hutch.) Mildbr.	P	Pterochore	Ulmaceae	0	0	0.03	0	0	0	0.03	0	ns
72	<i>Homalium longistylum</i> Mast.	SB	Sclerochore	Salicaceae	0	0	0.061	0	0	0	0.061	0	ns
73	Indet sp11				0	0	0.03	0	0	0	0.03	0	ns
74	Indet sp16				0	0	0.03	0	0	0	0.03	0	ns
75	Indet sp17				0	0	0.121	0	0	0	0.121	0	0.014
76	Indet sp8				0	0	0.03	0	0	0	0.03	0	ns
77	Indet sp9				0	0	0.03	0	0	0	0.03	0	ns
78	<i>Klaineanthus gaboniae</i> Pierre ex Prain	SB	Sarcochore	Euphorbiaceae	0	0	0.182	0	0	0	0.182	0	0.003
79	<i>Leptactina arborescens</i> (Welw. ex Benth. & Hook. f.) De Block	P	Sarcochore	Rubiaceae	0	0	0.061	0	0	0	0.061	0	ns
80	<i>Macaranga</i> sp2	P	Sarcochore	Euphorbiaceae	0	0	0.121	0	0	0	0.121	0	0.013
81	<i>Manilkara obovata</i> (Sabine & G. Don) J. H. Hemsl.	SB	Sarcochore	Sapotaceae	0	0	0.03	0	0	0	0.03	0	ns
82	<i>Maranthes chrysophylla</i> (Oliv.) Prance	SB	Sarcochore	Chrysobalanaceae	0	0	0.061	0	0	0	0.061	0	ns
83	<i>Markhamia</i> sp.	P	Pterochore	Bignoniaceae	0	0	0.061	0	0	0	0.061	0	ns
84	<i>Millettia barteri</i> (Benth.) Dunn	P	Ballochore	Fabaceae	0	0	0.121	0	0	0	0.121	0	0.016
85	<i>Millettia laurentii</i> De Wild.	P	Ballochore	Fabaceae	0	0	0.061	0	0	0	0.061	0	ns
86	<i>Millettia sanagana</i> Harms	NPLD	Ballochore	Fabaceae	0	0	0.03	0	0	0	0.03	0	ns
87	<i>Monodora tenuifolia</i> Benth.	SB	Barochore	Annonaceae	0	0	0.03	0	0	0	0.03	0	ns
88	<i>Oncoba dentata</i> Oliv.	P	Ballochore	Salicaceae	0	0	0.091	0	0	0	0.091	0	ns
89	<i>Oncoba gilgiana</i> Sprague	P	Ballochore	Salicaceae	0	0	0.03	0	0	0	0.03	0	ns
90	<i>Oncoba mannii</i> Oliv.	P	Ballochore	Salicaceae	0	0	0.061	0	0	0	0.061	0	ns
91	<i>Oncoba</i> sp.	P	Ballochore	Salicaceae	0	0	0.03	0	0	0	0.03	0	ns
92	<i>Oncoba welwitschii</i> Oliv.	P	Ballochore	Salicaceae	0	0	0.182	0	0	0	0.182	0	0.002
93	<i>Pauridiantha callicarpoides</i> (Hiern) Bremek.	P	Sarcochore	Rubiaceae	0	0	0.03	0	0	0	0.03	0	ns
94	<i>Pentaclethra eetveldeana</i> De Wild. & T. Durand	NPLD	Ballochore	Fabaceae	0	0	0.03	0	0	0	0.03	0	ns
95	<i>Picralima nitida</i> (Stapf) T. Durand & H. Durand	SB	Barochore	Apocynaceae	0	0	0.394	0	0	0	0.394	0	0.001
96	<i>Pierreodendron africanum</i> (Hook. f.) Little	SB	Sclerochore	Simaroubaceae	0	0	0.03	0	0	0	0.03	0	ns
97	<i>Pouteria altissima</i> (A. Chev.) Baehni	NPLD	Sarcochore	Sapotaceae	0	0	0.152	0	0	0	0.152	0	0.006
98	<i>Psydrax subcordata</i> (DC.) Bridson	P	Sarcochore	Rubiaceae	0	0	0.091	0	0	0	0.091	0	ns
99	<i>Pterocarpus mildbraedii</i> Harms	NPLD	Pterochore	Fabaceae	0	0	0.091	0	0	0	0.091	0	ns

100	<i>Sapium</i> sp.	P	Sarcochore	Euphorbiaceae	0	0	0.03	0	0	0	0.03	0	ns
101	<i>Sorindeia africana</i> (Engl.) Van der Veken	SB	Sarcochore	Anacardiaceae	0	0	0.03	0	0	0	0.03	0	ns
102	<i>Sorindeia juglandifolia</i> (A. Rich.) Planch. ex Oliv.	SB	Sarcochore	Anacardiaceae	0	0	0.03	0	0	0	0.03	0	ns
103	<i>Spathandra</i> sp.	SB	Sarcochore	Melastomataceae	0	0	0.03	0	0	0	0.03	0	ns
104	<i>Synsepalum stipulatum</i> (Radlk.) Engl.	SB	Sarcochore	Sapotaceae	0	0	0.03	0	0	0	0.03	0	ns
105	<i>Thomandersia hensii</i> De Wild. & T. Durand	SB	Sclerochore	Thomandersiaceae	0	0	0.091	0	0	0	0.091	0	ns
106	<i>Treculia africana</i> Decne.	SB	Sarcochore	Moraceae	0	0	0.303	0	0	0	0.303	0	0.001
107	<i>Trichilia</i> sp2	SB	Sarcochore	Meliaceae	0	0	0.061	0	0	0	0.061	0	ns
108	<i>Uapaca vanhouttei</i> De Wild.	P	Sarcochore	Phyllanthaceae	0	0	0.061	0	0	0	0.061	0	ns
109	<i>Uvariadendron molundense</i> (Engl. & Diels) R. E. Fr.	SB	Sarcochore	Annonaceae	0	0	0.03	0	0	0	0.03	0	ns
110	<i>Vernonia</i> sp.	P	Pogonochore	Compositae	0	0	0.03	0	0	0	0.03	0	ns
111	<i>Vismia rubescens</i> Oliv.	P	Sarcochore	Hypericaceae	0	0	0.03	0	0	0	0.03	0	ns
112	<i>Vitex doniana</i> Sweet	P	Sarcochore	Lamiaceae	0	0	0.03	0	0	0	0.03	0	ns
113	<i>Xylopia rubescens</i> Oliv.	SB	Sarcochore	Annonaceae	0	0	0.061	0	0	0	0.061	0	ns
114	<i>Zanthoxylum</i> sp1	NPLD	Sarcochore	Rutaceae	0	0	0.03	0	0	0	0.03	0	ns
115	<i>Distemonanthus benthamianus</i> Baill.	P	Pterochore	Fabaceae	0	0	0	0.152	0	0	0	0.152	0.005
116	<i>Letestua durissima</i> (A. Chev.) Lecomte	NPLD	Sarcochore	Sapotaceae	0	0	0	0.03	0	0	0	0.03	ns
117	<i>Pauridiantha</i> sp.	P	Sarcochore	Rubiaceae	0	0	0	0.03	0	0	0	0.03	ns
118	<i>Prioria joveri</i> (Normand ex Aubr?v.) Breteler	NPLD	Pterochore	Fabaceae	0	0	0	0.03	0	0	0	0.03	ns
119	<i>Rauvolfia caffra</i> Sond.	P	Sarcochore	Apocynaceae	0	0	0	0.03	0	0	0	0.03	ns
120	<i>Strombosia zenkeri</i> Engl.	SB	Sarcochore	Olacaceae	0	0	0	0.03	0	0	0	0.03	ns
121	<i>Talbotiella</i> sp.	SB	Ballochore	Fabaceae	0	0	0	0.03	0	0	0	0.03	ns
122	<i>Celtis</i> sp.	NPLD	Sarcochore	Cannabaceae	0.03	0.03	0	0	0.015	0.015	0	0	ns
123	<i>Elaeis guineensis</i> Jacq.	P	Sarcochore	Arecaceae	0.03	0.03	0	0	0.015	0.015	0	0	ns
124	<i>Scorodophloeus zenkeri</i> Harms	SB	Ballochore	Fabaceae	0.03	0.03	0	0	0.01	0.02	0	0	ns
125	<i>Strombosia</i> sp.	SB	Sarcochore	Olacaceae	0.152	0.061	0	0	0.108	0.017	0	0	0.039
126	<i>Aidia</i> sp.	SB	Sarcochore	Rubiaceae	0	0.061	0.03	0	0	0.03	0.015	0	ns
127	<i>Antidesma venosum</i> E. Mey. ex Tul.	SB	Sarcochore	Phyllanthaceae	0	0.03	0.03	0	0	0.015	0.015	0	ns
128	<i>Barteria fistulosa</i> Mast.	P	Sarcochore	Passifloraceae	0	0.061	0.697	0	0	0.002	0.677	0	0.001
129	<i>Bombax buonopozense</i> P. Beauv.	P	Pogonochore	Malvaceae	0	0.03	0.03	0	0	0.006	0.024	0	ns
130	<i>Ceiba pentandra</i> (L.) Gaertn.	P	Pogonochore	Malvaceae	0	0.03	0.03	0	0	0.02	0.01	0	ns
131	<i>Cola verticillata</i> (Thonn.) Stapf ex A. Chev.	SB	Sarcochore	Malvaceae	0	0.03	0.091	0	0	0.006	0.073	0	ns
132	<i>Dialium zenkeri</i> Harms	SB	Sarcochore	Fabaceae	0	0.152	0.03	0	0	0.13	0.004	0	0.018
133	<i>Drypetes laciniata</i> (Pax) Hutch.	SB	Sarcochore	Putranjivaceae	0	0.03	0.091	0	0	0.005	0.076	0	ns
134	<i>Drypetes paxii</i> Hutch.	SB	Sarcochore	Putranjivaceae	0	0.03	0.03	0	0	0.015	0.015	0	ns
135	<i>Entandrophragma utile</i> (Dawe & Sprague) Sprague	NPLD	Pterochore	Meliaceae	0	0.091	0.03	0	0	0.073	0.006	0	ns

136	<i>Garcinia mannii</i> Oliv.	SB	Sarcochore	Clusiaceae	0	0.061	0.212	0	0	0.009	0.179	0	0.003
137	<i>Klaineanthus</i> sp.	SB	Sarcochore	Euphorbiaceae	0	0.091	0.061	0	0	0.033	0.039	0	ns
138	<i>Mareyopsis longifolia</i> (Pax & K. Hoffm.)	SB	Sarcochore	Euphorbiaceae	0	0.061	0.303	0	0	0.006	0.271	0	0.001
139	<i>Pentadesma butyracea</i> Sabine	SB	Sarcochore	Clusiaceae	0	0.061	0.121	0	0	0.018	0.085	0	ns
140	<i>Tetrorchidium didymostemon</i> (Baill.) Pax & K. Hoffm.	P	Sarcochore	Euphorbiaceae	0	0.03	0.061	0	0	0.01	0.04	0	ns
141	<i>Treculia obovoidea</i> N.E. Br.	SB	Sarcochore	Moraceae	0	0.061	0.03	0	0	0.052	0.004	0	ns
142	<i>Trichoscypha</i> sp.	NPLD	Sarcochore	Anacardiaceae	0	0.061	0.03	0	0	0.048	0.006	0	ns
143	<i>Uvariastrum pierreanum</i> Engl.	SB	Sarcochore	Annonaceae	0	0.061	0.242	0	0	0.01	0.202	0	0.001
144	<i>Vitex</i> sp.	P	Sarcochore	Lamiaceae	0	0.03	0.03	0	0	0.008	0.023	0	ns
145	<i>Afzelia bipindensis</i> Harms	NPLD	Sarcochore	Fabaceae	0	0	0.03	0.061	0	0	0.018	0.024	ns
146	<i>Albizia ferruginea</i> (Guill. & Perr.) Benth.	P	Pterochore	Fabaceae	0	0	0.061	0.03	0	0	0.04	0.01	ns
147	<i>Amphimas pterocarpoides</i> Harms	NPLD	Pterochore	Fabaceae	0	0	0.303	0.121	0	0	0.202	0.04	0.002
148	<i>Anopyxis klaineana</i> (Pierre) Engl.	NPLD	Pterochore	Rhizophoraceae	0	0	0.212	0.121	0	0	0.135	0.044	0.02
149	<i>Anthocleista</i> sp.	P	Sarcochore	Gentianaceae	0	0	0.061	0.061	0	0	0.04	0.02	ns
150	<i>Anthonotha cladantha</i> (Harms) J. L. Leonard	SB	Ballochore	Fabaceae	0	0	0.152	0.03	0	0	0.101	0.01	0.041
151	<i>Anthonotha</i> sp1	SB	Ballochore	Fabaceae	0	0	0.061	0.061	0	0	0.051	0.01	ns
152	<i>Aورانthe cladantha</i> (K. Schum.) Somers	P	Sarcochore	Rubiaceae	0	0	0.182	0.03	0	0	0.162	0.003	0.003
153	<i>Baphia nitida</i> Lodd.	SB	Ballochore	Fabaceae	0	0	0.152	0.061	0	0	0.137	0.006	0.011
154	<i>Bobgunnia fistuloides</i> (Harms) J. H. Kirkbr. & Wiersema	NPLD	Sarcochore	Fabaceae	0	0	0.182	0.03	0	0	0.159	0.004	0.006
155	<i>Bombax brevicuspae</i> Sprague	NPLD	Pogonochore	Malvaceae	0	0	0.333	0.121	0	0	0.292	0.015	0.001
156	<i>Bridelia micrantha</i> (Hochst.) Baill.	P	Sarcochore	Phyllanthaceae	0	0	0.273	0.061	0	0	0.245	0.006	0.001
157	<i>Canarium schweinfurthii</i> Engl.	P	Sarcochore	Burseraceae	0	0	0.152	0.182	0	0	0.082	0.084	ns
158	<i>Canthium</i> sp.	SB	Sarcochore	Rubiaceae	0	0	0.152	0.03	0	0	0.128	0.005	0.012
159	<i>Carapa macrantha</i> Harms	SB	Sarcochore	Meliaceae	0	0	0.03	0.03	0	0	0.024	0.006	ns
160	<i>Carapa</i> sp1	SB	Sarcochore	Meliaceae	0	0	0.061	0.03	0	0	0.045	0.008	ns
161	<i>Celtis philippensis</i> Blanco	NPLD	Sarcochore	Cannabaceae	0	0	0.091	0.121	0	0	0.019	0.095	ns
162	<i>Chrysophyllum africanum</i> A. DC.	NPLD	Sarcochore	Sapotaceae	0	0	0.242	0.061	0	0	0.19	0.013	0.001
163	<i>Chrysophyllum beguei</i> Aubrev. & Pellegr.	NPLD	Sarcochore	Sapotaceae	0	0	0.03	0.03	0	0	0.015	0.015	ns
164	<i>Chrysophyllum pruniforme</i> Pierre ex Engl.	NPLD	Sarcochore	Sapotaceae	0	0	0.061	0.091	0	0	0.026	0.052	ns
165	<i>Cleistanthus</i> sp.	P	Sclerochore	Phyllanthaceae	0	0	0.333	0.061	0	0	0.307	0.005	0.001
166	<i>Cleistopholis glauca</i> Pierre ex Engl. & Diels	P	Sarcochore	Annonaceae	0	0	0.303	0.121	0	0	0.253	0.02	0.002
167	<i>Cleistopholis patens</i> (Benth.) Engl. & Diels	P	Sarcochore	Annonaceae	0	0	0.273	0.212	0	0	0.185	0.068	0.003
168	<i>Dacryodes klaineana</i> (Pierre) H. J. Lam	SB	Sarcochore	Burseraceae	0	0	0.091	0.091	0	0	0.066	0.025	ns
169	<i>Detarium macrocarpum</i> Harms	P	Sarcochore	Fabaceae	0	0	0.273	0.091	0	0	0.218	0.018	0.002
170	<i>Diospyros dendo</i> Hiern	SB	Sarcochore	Ebenaceae	0	0	0.061	0.03	0	0	0.051	0.005	ns

171	<i>Discoglyprena caloneura</i> (Pax) Prain	P	Sarcochore	Euphorbiaceae	0	0	0.455	0.242	0	0	0.344	0.059	0.001
172	<i>Donella</i> sp.	SB	Sarcochore	Sapotaceae	0	0	0.061	0.03	0	0	0.045	0.008	ns
173	<i>Drypetes klainei</i> Pierre ex Pax	SB	Sarcochore	Putranjivaceae	0	0	0.242	0.061	0	0	0.231	0.003	0.001
174	<i>Drypetes leonensis</i> Pax	SB	Sarcochore	Putranjivaceae	0	0	0.303	0.121	0	0	0.279	0.01	0.001
175	<i>Elaeophorbia drupifera</i> (Thonn.) Stapf	P	Sarcochore	Euphorbiaceae	0	0	0.03	0.03	0	0	0.015	0.015	ns
176	<i>Endodesmia calophylloides</i> Benth.	NPLD	Sarcochore	Calophyllaceae	0	0	0.061	0.03	0	0	0.045	0.008	ns
177	<i>Erythrina excelsa</i> Baker	P	Ballochore	Fabaceae	0	0	0.091	0.061	0	0	0.039	0.035	ns
178	<i>Fernandoa adolfi-friderici</i> (Gilg & Mildbr.) Heine	P	Pterochore	Bignoniaceae	0	0	0.303	0.182	0	0	0.202	0.061	0.001
179	<i>Fernandoa ferdinandi</i> (Welw.) K. Schum.	P	Pterochore	Bignoniaceae	0	0	0.091	0.061	0	0	0.055	0.024	ns
180	<i>Ficus exasperata</i> Vahl	P	Sarcochore	Moraceae	0	0	0.061	0.03	0	0	0.056	0.002	ns
181	<i>Ficus mucoso</i> Welw. ex Ficalho	P	Sarcochore	Moraceae	0	0	0.03	0.03	0	0	0.024	0.006	ns
182	<i>Gilbertiodendron</i> sp.	SB	Ballochore	Fabaceae	0	0	0.03	0.03	0	0	0.021	0.009	ns
183	<i>Grossera macrantha</i> Pax	SB	Sarcochore	Euphorbiaceae	0	0	0.061	0.03	0	0	0.059	0.001	ns
184	<i>Hymenocardia lyrata</i> Tul.	P	Pterochore	Phyllanthaceae	0	0	0.212	0.091	0	0	0.179	0.014	0.003
185	Indet sp1	SB	Sarcochore		0	0	0.061	0.03	0	0	0.024	0.018	ns
186	Indet sp21				0	0	0.03	0.03	0	0	0.015	0.015	ns
187	<i>Irvingia</i> sp.	SB	Sarcochore	Irvingiaceae	0	0	0.061	0.091	0	0	0.024	0.055	ns
188	<i>Isolona hexaloba</i> (Pierre) Engl. & Diels	SB	Sarcochore	Annonaceae	0	0	0.121	0.061	0	0	0.091	0.015	ns
189	<i>Khaya anotheca</i> (Welw.) C. DC.	NPLD	Pterochore	Meliaceae	0	0	0.03	0.061	0	0	0.01	0.04	ns
190	<i>Lansea welwitschii</i> (Hiern) Engl.	NPLD	Sarcochore	Anacardiaceae	0	0	0.182	0.121	0	0	0.124	0.038	0.034
191	<i>Leptaulus daphnoides</i> Benth.	SB	Sarcochore	Cardiopteridaceae	0	0	0.212	0.03	0	0	0.205	0.001	0.001
192	<i>Maprounea membranacea</i> Pax & K. Hoffm.	P	Sarcochore	Euphorbiaceae	0	0	0.091	0.03	0	0	0.068	0.008	ns
193	<i>Maranthes glabra</i> (Oliv.) Prance	SB	Sarcochore	Chrysobalanaceae	0	0	0.182	0.091	0	0	0.141	0.02	0.007
194	<i>Margaritaria discoidea</i> (Baill.) G.L. Webster	P	Sarcochore	Phyllanthaceae	0	0	0.152	0.242	0	0	0.082	0.111	ns
195	<i>Milicia excelsa</i> (Welw.) C. C. Berg	P	Sarcochore	Moraceae	0	0	0.061	0.091	0	0	0.03	0.045	ns
196	<i>Morinda lucida</i> Benth.	P	Sarcochore	Rubiaceae	0	0	0.03	0.061	0	0	0.01	0.04	ns
197	<i>Musanga cecropioides</i> R. Br.	P	Sarcochore	Urticaceae	0	0	0.364	0.364	0	0	0.206	0.158	0.029
198	<i>Nauclea pobeguinii</i> (Pobeg.) Merr.	P	Sarcochore	Rubiaceae	0	0	0.03	0.03	0	0	0.015	0.015	ns
199	<i>Newtonia leucocarpa</i> (Harms) G.C.C. Gilbert & Boutique	NPLD	Pterochore	Fabaceae	0	0	0.03	0.03	0	0	0.02	0.01	ns
200	<i>Ochna afzelii</i> R. Br. ex Oliv.	SB	Sclerochore	Ochnaceae	0	0	0.03	0.03	0	0	0.015	0.015	ns
201	<i>Omphalocarpum procerum</i> P. Beauv.	SB	Barochore	Sapotaceae	0	0	0.03	0.061	0	0	0.006	0.048	ns
202	<i>Pachyelasma tessmannii</i> (Harms) Harms	NPLD	Barochore	Fabaceae	0	0	0.121	0.03	0	0	0.097	0.006	0.047
203	<i>Parkia filicoidea</i> Welw. ex Oliv.	NPLD	Sarcochore	Fabaceae	0	0	0.091	0.03	0	0	0.068	0.008	ns
204	<i>Prioria oxyphylla</i> (Harms) Bretelet	NPLD	Pterochore	Fabaceae	0	0	0.061	0.061	0	0	0.03	0.03	ns

205	<i>Pseudospondias microcarpa</i> (A. Rich.) Engl.	NPLD	Sarcochore	Anacardiaceae	0	0	0.455	0.152	0	0	0.343	0.037	0.001
206	<i>Quassia gabonensis</i> Pierre	NPLD	Sarcochore	Simaroubaceae	0	0	0.152	0.091	0	0	0.114	0.023	0.028
207	<i>Scottellia klaineana</i> Pierre	SB	Sarcochore	Achariaceae	0	0	0.333	0.061	0	0	0.303	0.006	0.001
208	<i>Shirakiopsis elliptica</i> (Hochst.) Esser	P	Sarcochore	Euphorbiaceae	0	0	0.061	0.091	0	0	0.038	0.034	ns
209	<i>Strephonema</i> sp.	SB	Sarcochore	Combretaceae	0	0	0.121	0.091	0	0	0.076	0.034	ns
210	<i>Trichilia monadelpha</i> (Thonn.) J.J. de Wilde	SB	Sarcochore	Meliaceae	0	0	0.121	0.061	0	0	0.081	0.02	ns
211	<i>Tridesmostemon omphalocarpoides</i> Engl.	NPLD	Sarcochore	Sapotaceae	0	0	0.061	0.03	0	0	0.036	0.012	ns
212	<i>Uvariastrum zenkeri</i> Engl. & Diels	SB	Sarcochore	Annonaceae	0	0	0.212	0.03	0	0	0.196	0.002	0.001
213	<i>Vernonia doniana</i> DC.	P	Pogonochore	Compositae	0	0	0.061	0.03	0	0	0.04	0.01	ns
214	<i>Xylopia quintasii</i> Engl. & Diels	SB	Sarcochore	Annonaceae	0	0	0.545	0.091	0	0	0.517	0.005	0.001
215	<i>Xylopia staudtii</i> Engl. & Diels	SB	Sarcochore	Annonaceae	0	0	0.303	0.121	0	0	0.227	0.03	0.001
216	<i>Zanthoxylum gillettii</i> (De Wild.) P. G. Waterman	P	Sarcochore	Rutaceae	0	0	0.515	0.242	0	0	0.439	0.036	0.001
217	<i>Dracaena arborea</i> (Willd.) Link	NPLD	Sarcochore	Asparagaceae	0.03	0	0	0.121	0.006	0	0	0.097	ns
218	<i>Monodora myristica</i> (Gaertn.) Dunal	SB	Barochore	Annonaceae	0.03	0	0.061	0	0.004	0	0.053	0	ns
219	<i>Christiana africana</i> DC.	SB	Sclerochore	Malvaceae	0	0.03	0	0.03	0	0.015	0	0.015	ns
220	<i>Strychnos</i> sp.	SB	Barochore	Loganiaceae	0.152	0.273	0	0.03	0.048	0.175	0	0.001	0.009
221	<i>Allanblackia</i> sp1	SB	Sarcochore	Clusiaceae	0	0.121	0.394	0.121	0	0.02	0.287	0.013	0.001
222	<i>Alstonia boonei</i> De Wild.	P	Pogonochore	Apocynaceae	0	0.061	0.273	0.667	0	0.002	0.06	0.497	0.001
223	<i>Amphimas</i> sp.	NPLD	Pterochore	Fabaceae	0	0.03	0.091	0.03	0	0.006	0.055	0.006	ns
224	<i>Anonidium mannii</i> (Oliv.) Engl. & Diels	SB	Barochore	Annonaceae	0	0.576	0.97	0.364	0	0.035	0.846	0.024	0.001
225	<i>Anthonotha macrophylla</i> P. Beauv.	SB	Ballochore	Fabaceae	0	0.424	0.727	0.091	0	0.046	0.637	0.001	0.001
226	<i>Antrocaryon klaineum</i> Pierre	P	Sarcochore	Anacardiaceae	0	0.03	0.152	0.182	0	0.002	0.057	0.102	ns
227	<i>Baillonella toxisperma</i> Pierre	NPLD	Sarcochore	Sapotaceae	0	0.03	0.303	0.121	0	0.002	0.214	0.029	0.003
228	<i>Beilschmiedia obscura</i> (Stapf) Engl. ex A. Chev.	SB	Sarcochore	Lauraceae	0	0.061	0.606	0.212	0	0.003	0.467	0.038	0.001
229	<i>Beilschmiedia</i> sp.	SB	Sarcochore	Lauraceae	0	0.152	0.485	0.091	0	0.02	0.379	0.008	0.001
230	<i>Blighia sapida</i> K. D. Koenig	SB	Sarcochore	Sapindaceae	0	0.03	0.091	0.061	0	0.004	0.052	0.017	ns
231	<i>Blighia welwitschii</i> (Hiern) Radlk.	SB	Sarcochore	Sapindaceae	0	0.061	0.697	0.333	0	0.003	0.556	0.052	0.001
232	<i>Carapa procera</i> DC.	SB	Sarcochore	Meliaceae	0	0.606	0.818	0.424	0	0.133	0.555	0.043	0.001
233	<i>Celtis adolfi-friderici</i> Engl.	NPLD	Sarcochore	Cannabaceae	0	0.121	0.212	0.121	0	0.019	0.093	0.048	ns
234	<i>Chrysophyllum lacourtianum</i> De Wild.	NPLD	Sarcochore	Sapotaceae	0	0.333	0.545	0.303	0	0.063	0.332	0.061	0.001
235	<i>Chytranthus</i> sp1	SB	Sarcochore	Sapindaceae	0	0.273	0.364	0.061	0	0.069	0.261	0.002	0.001
236	<i>Coelocaryon preussii</i> Warb.	NPLD	Sarcochore	Myristicaceae	0	0.03	0.667	0.455	0	0	0.578	0.058	0.001
237	<i>Cola acuminata</i> (P. Beauv.) Schott & Endl.	SB	Sarcochore	Malvaceae	0	0.03	0.394	0.091	0	0.001	0.34	0.01	0.001
238	<i>Corynanthe pachyceras</i> K. Schum.	SB	Pterochore	Rubiaceae	0	0.061	0.667	0.212	0	0.001	0.584	0.023	0.001
239	<i>Crudia zenkeri</i> Harms ex De Wild.	SB	Ballochore	Fabaceae	0	0.03	0.182	0.091	0	0.001	0.153	0.012	0.016

240	<i>Dacryodes edulis</i> (G. Don) H. J. Lam	SB	Sarcochore	Burseraceae	0	0.03	0.182	0.091	0	0.002	0.152	0.009	0.007
241	<i>Dacryodes</i> sp.	SB	Sarcochore	Burseraceae	0	0.061	0.455	0.091	0	0.003	0.406	0.006	0.001
242	<i>Desplatsia dewevrei</i> (De Wild. & T. Durand) Burret	SB	Sarcochore	Malvaceae	0	0.273	0.636	0.121	0	0.035	0.528	0.005	0.001
243	<i>Dialium</i> sp1	SB	Sarcochore	Fabaceae	0	0.242	0.061	0.061	0	0.148	0.016	0.008	0.01
244	<i>Dialium</i> sp2	SB	Sarcochore	Fabaceae	0	0.03	0.121	0.03	0	0.005	0.095	0.001	ns
245	<i>Diospyros</i> sp1	SB	Sarcochore	Ebenaceae	0	0.303	0.424	0.121	0	0.07	0.295	0.009	0.001
246	<i>Drypetes preussii</i> (Pax) Hutch.	SB	Sarcochore	Putranjivaceae	0	0.03	0.364	0.061	0	0.001	0.337	0.002	0.001
247	<i>Duguetia staudtii</i> (Engl. & Diels) Chatrou	NPLD	Barochore	Annonaceae	0	0.121	0.364	0.364	0	0.01	0.224	0.108	0.005
248	<i>Entandrophragma cylindricum</i> (Sprague) Sprague	NPLD	Pterochore	Meliaceae	0	0.182	0.273	0.273	0	0.036	0.117	0.101	ns
249	<i>Eribroma oblongum</i> (Mast.) Pierre ex A. Chev.	SB	Sarcochore	Malvaceae	0	0.03	0.212	0.03	0	0.001	0.177	0.004	0.005
250	<i>Erisma delphus exsul</i> Mildbr.	P	Pterochore	Vochysiaceae	0	0.061	0.242	0.121	0	0.006	0.173	0.023	0.001
251	<i>Funtumia africana</i> (Benth.) Stapf	SB	Pogonochore	Apocynaceae	0	0.061	0.576	0.333	0	0.001	0.429	0.078	0.001
252	<i>Funtumia elastica</i> (P. Preuss) Stapf	SB	Pogonochore	Apocynaceae	0	0.091	0.273	0.061	0	0.018	0.191	0.006	0.004
253	<i>Grewia coriacea</i> Mast.	SB	Sarcochore	Malvaceae	0	0.182	0.212	0.03	0	0.091	0.098	0.001	ns
254	<i>Heisteria parvifolia</i> Sm.	SB	Sarcochore	Olcaceae	0	0.03	0.424	0.394	0	0	0.311	0.102	0.002
255	<i>Hexalobus crispiflorus</i> A. Rich.	SB	Sarcochore	Annonaceae	0	0.061	0.485	0.394	0	0.003	0.295	0.137	0.001
256	<i>Homalium letestui</i> Pellegr.	SB	Sclerochore	Salicaceae	0	0.03	0.303	0.242	0	0.001	0.218	0.062	0.003
257	<i>Irvingia robur</i> Mildbr.	SB	Sarcochore	Irvingiaceae	0	0.03	0.364	0.212	0	0.002	0.257	0.05	0.001
258	<i>Keayodendron bridelioides</i> Leandri	SB	Sarcochore	Phyllanthaceae	0	0.061	0.515	0.424	0	0.002	0.295	0.168	0.001
259	<i>Lasiodiscus mannii</i> Hook. f.	SB	Sclerochore	Rhamnaceae	0	0.303	0.424	0.03	0	0.043	0.36	0	0.001
260	<i>Lepidobotrys staudtii</i> Engl.	SB	Sarcochore	Lepidobotryaceae	0	0.03	0.667	0.273	0	0	0.55	0.044	0.001
261	<i>Lovoa trichilioides</i> Harms	NPLD	Pterochore	Meliaceae	0	0.091	0.333	0.061	0	0.014	0.244	0.007	0.001
262	<i>Macaranga staudtii</i> Pax	P	Sarcochore	Euphorbiaceae	0	0.061	0.182	0.152	0	0.016	0.067	0.056	ns
263	<i>Magnistipula tessmannii</i> (Engl.) Prance	P	Sarcochore	Chrysobalanaceae	0	0.03	0.152	0.061	0	0.003	0.114	0.01	0.015
264	<i>Mammea africana</i> Sabine	SB	Sarcochore	Calophyllaceae	0	0.03	0.394	0.091	0	0.001	0.3	0.017	0.001
265	<i>Maranthes</i> sp.	SB	Sarcochore	Chrysobalanaceae	0	0.121	0.182	0.061	0	0.021	0.142	0.003	0.021
266	<i>Nauclea diderrichii</i> (De Wild. & T. Durand) Merr.	P	Sarcochore	Rubiaceae	0	0.03	0.364	0.212	0	0.001	0.194	0.092	0.005
267	<i>Ongokea gore</i> (Hua) Pierre	NPLD	Sarcochore	Olcaceae	0	0.152	0.364	0.273	0	0.02	0.187	0.096	0.013
268	<i>Pancovia laurentii</i> (De Wild.) Gilg ex De Wild.	SB	Sarcochore	Sapindaceae	0	0.424	0.485	0.061	0	0.102	0.359	0.001	0.001
269	<i>Panda oleosa</i> Pierre	SB	Sarcochore	Pandaceae	0	0.121	0.758	0.636	0	0.008	0.451	0.215	0.001
270	<i>Parinari excelsa</i> Sabine	NPLD	Sarcochore	Chrysobalanaceae	0	0.061	0.061	0.091	0	0.012	0.03	0.027	ns
271	<i>Parkia bicolor</i> A. Chev.	NPLD	Sarcochore	Fabaceae	0	0.03	0.212	0.091	0	0.002	0.15	0.021	0.021
272	<i>Pteleopsis hylodendron</i> Mildbr.	P	Pterochore	Combretaceae	0	0.061	0.364	0.273	0	0.003	0.177	0.125	0.009
273	<i>Pterygota macrocarpa</i> K. Schum.	NPLD	Pterochore	Malvaceae	0	0.03	0.03	0.03	0	0.01	0.01	0.01	ns
274	<i>Pycnanthus angolensis</i> (Welw.) Warb.	NPLD	Sarcochore	Myristicaceae	0	0.273	0.606	0.424	0	0.027	0.431	0.081	0.001

275	Rinorea sp1	SB	Sclerochore	Violaceae	0	0.182	0.424	0.061	0	0.025	0.352	0.002	0.001
276	Rinorea sp2	SB	Sclerochore	Violaceae	0	0.03	0.152	0.03	0	0.001	0.141	0.001	0.015
277	Rothmannia lujae (De Wild.) Keay	SB	Sarcochore	Rubiaceae	0	0.333	0.758	0.03	0	0.048	0.642	0	0.001
278	Staudtia kamerunensis var. gabonensis (Warb.) Fouilloy	SB	Sarcochore	Myristicaceae	0	0.242	0.788	0.212	0	0.016	0.677	0.016	0.001
279	Sterculia tragacantha Lindl.	P	Pterochore	Malvaceae	0	0.091	0.485	0.515	0	0.004	0.337	0.136	0.001
280	Symphonia globulifera L. f.	SB	Sarcochore	Clusiaceae	0	0.061	0.394	0.03	0	0.008	0.328	0.001	0.001
281	Synsepalum dulcificum (Schumach. & Thonn.) Daniell	SB	Sarcochore	Sapotaceae	0	0.061	0.424	0.182	0	0.003	0.349	0.024	0.001
282	Syzygium sp.	SB	Sarcochore	Myrtaceae	0	0.03	0.394	0.152	0	0.001	0.295	0.034	0.001
283	Tessmannia africana Harms	NPLD	Ballochore	Fabaceae	0	0.061	0.515	0.303	0	0.003	0.298	0.112	0.001
284	Tetrapleura tetraptera (Schumach. & Thonn.) Taub.	P	Sarcochore	Fabaceae	0	0.121	0.364	0.303	0	0.013	0.192	0.109	0.011
285	Trichilia rubescens Oliv.	SB	Sarcochore	Meliaceae	0	0.03	0.515	0.121	0	0.001	0.445	0.014	0.001
286	Trichilia tessmannii Harms	SB	Sarcochore	Meliaceae	0	0.152	0.333	0.152	0	0.024	0.242	0.017	0.003
287	Trichoscypha acuminata Engl.	NPLD	Sarcochore	Anacardiaceae	0	0.121	0.758	0.03	0	0.008	0.699	0	0.001
288	Trichoscypha arborea (A. Chev.) A. Chev.	NPLD	Sarcochore	Anacardiaceae	0	0.03	0.121	0.03	0	0.004	0.087	0.004	ns
289	Trichoscypha oddonii De Wild.	NPLD	Sarcochore	Anacardiaceae	0	0.03	0.576	0.121	0	0.001	0.519	0.01	0.001
290	Trilepisium madagascariense DC.	NPLD	Sarcochore	Moraceae	0	0.03	0.182	0.121	0	0.001	0.138	0.025	0.026
291	Turraeanthus africanus (Welw. ex C. DC.) Pellegr.	SB	Sarcochore	Meliaceae	0	0.091	0.364	0.212	0	0.007	0.25	0.051	0.002
292	Xylopia aurantioidora De Wild. & T. Durand	NPLD	Sarcochore	Annonaceae	0	0.03	0.242	0.03	0	0.002	0.205	0.002	0.001
293	Xylopia hypolampra Mildbr.	P	Sarcochore	Annonaceae	0	0.121	0.182	0.242	0	0.023	0.07	0.103	ns
294	Zanthoxylum heitzii (Aubr?v. & Pellegr.) P. G. Waterman	P	Sarcochore	Rutaceae	0	0.03	0.242	0.152	0	0.002	0.133	0.061	0.021
295	Calpocalyx sp.	SB	Ballochore	Fabaceae	0.03	0.121	0.03	0	0.002	0.106	0.002	0	ns
296	Centroplocus glaucinus Pierre	SB	Sarcochore	Centroplocaceae	0.03	0.394	0.758	0	0	0.056	0.645	0	0.001
297	Cola sp.	SB	Sarcochore	Malvaceae	0.03	0.152	0.364	0	0.001	0.044	0.246	0	0.003
298	Copaifera mildbraedii Harms	NPLD	Sarcochore	Fabaceae	0.03	0.03	0.212	0	0.002	0.002	0.184	0	0.004
299	Diospyros hoyleana F. White	SB	Sarcochore	Ebenaceae	0.303	0.394	0.485	0	0.054	0.14	0.227	0	0.004
300	Diospyros mannii Hiern	SB	Sarcochore	Ebenaceae	0.091	0.061	0.091	0	0.049	0.014	0.021	0	ns
301	Drypetes sp2	SB	Sarcochore	Putranjivaceae	0.03	0.152	0.061	0	0.002	0.071	0.028	0	ns
302	Massularia acuminata (G. Don) Bullock ex Hoyle	SB	Sarcochore	Rubiaceae	0.091	0.394	0.273	0	0.009	0.197	0.109	0	0.007
303	Microdesmis sp.	SB	Sarcochore	Pandaceae	0.424	0.727	0.061	0	0.049	0.635	0.001	0	0.001
304	Rauvolfia vomitoria Afzel.	P	Sarcochore	Apocynaceae	0.03	0.061	0.121	0	0.003	0.015	0.081	0	ns
305	Rinorea dentata (P. Beauv.) Kuntze	SB	Sclerochore	Violaceae	0.333	0.758	0.091	0	0.031	0.643	0.005	0	0.001
306	Trichilia sp1	SB	Sarcochore	Meliaceae	0.182	0.364	0.03	0	0.04	0.273	0.001	0	0.001
307	Albizia glaberrima (Schumach. & Thonn.) Benth.	P	Pterochore	Fabaceae	0.03	0	0.182	0.212	0.002	0	0.082	0.106	ns

308	Homalium sp.	SB	Scerochore	Salicaceae	0.061	0	0.091	0.091	0.015	0	0.034	0.034	ns
309	Pterocarpus sp.	NPLD	Pterochore	Fabaceae	0.03	0	0.03	0.091	0.004	0	0.009	0.052	ns
310	Ricinodendron heudelotii (Baill.) Pierre ex Heckel	P	Sarcochore	Euphorbiaceae	0.03	0	0.121	0.121	0.003	0	0.042	0.067	ns
311	Terminalia superba Engl. & Diels	P	Pterochore	Combretaceae	0.03	0	0.091	0.394	0.001	0	0.015	0.32	0.001
312	Xylopia sp.	NPLD	Sarcochore	Annonaceae	0.061	0	0.212	0.121	0.003	0	0.17	0.018	0.013
313	Afrostyrax lepidophyllus Mildbr.	SB	Sarcochore	Huaceae	0.121	0.394	0.636	0.242	0.003	0.119	0.38	0.018	0.001
314	Aidia micrantha (K. Schum.) F. White	SB	Sarcochore	Rubiaceae	0.03	0.303	0.333	0.061	0	0.034	0.283	0.002	0.003
315	Albizia adianthifolia (Schumach.) W. Wight	P	Pterochore	Fabaceae	0.091	0.091	0.485	0.273	0.011	0.006	0.257	0.078	0.002
316	Albizia zygia (DC.) J. F. Macbr.	P	Pterochore	Fabaceae	0.03	0.03	0.121	0.091	0.002	0.002	0.075	0.021	ns
317	Angylocalyx pynaertii De Wild.	SB	Sarcochore	Fabaceae	0.061	0.091	0.758	0.455	0.002	0.005	0.571	0.077	0.001
318	Annickia affinis (Exell) Versteegh & Sosef	SB	Sarcochore	Annonaceae	0.061	0.394	0.939	0.818	0.001	0.036	0.565	0.242	0.001
319	Calpocalyx dinklagei Harms	SB	Ballochore	Fabaceae	0.03	0.273	0.515	0.061	0	0.067	0.371	0.001	0.001
320	Celtis mildbraedii Engl.	NPLD	Sarcochore	Cannabaceae	0.152	0.394	0.485	0.424	0.007	0.071	0.242	0.116	0.021
321	Celtis tessmannii Rendle	NPLD	Sarcochore	Cannabaceae	0.03	0.212	0.485	0.515	0	0.021	0.266	0.176	0.003
322	Celtis zenkeri Engl.	NPLD	Sarcochore	Cannabaceae	0.091	0.091	0.273	0.303	0.005	0.006	0.105	0.149	ns
323	Cola lateritia K. Schum.	SB	Sarcochore	Malvaceae	0.061	0.273	0.788	0.424	0.001	0.032	0.53	0.081	0.001
324	Corynanthe macroceras (K. Schum.) Pierre	SB	Pterochore	Rubiaceae	0.152	0.364	0.939	0.545	0.003	0.056	0.641	0.077	0.001
325	Cylicodiscus gabunensis Harms	P	Pterochore	Fabaceae	0.091	0.152	0.394	0.303	0.006	0.024	0.201	0.081	0.005
326	Dialium bipindense Harms	SB	Sarcochore	Fabaceae	0.091	0.03	0.273	0.091	0.009	0.001	0.203	0.012	0.001
327	Dialium pachyphyllum Harms	SB	Sarcochore	Fabaceae	0.03	0.242	0.364	0.212	0.001	0.025	0.271	0.027	0.008
328	Diospyros sp2	SB	Sarcochore	Ebenaceae	0.091	0.121	0.212	0.061	0.015	0.027	0.106	0.007	ns
329	Drypetes gossweileri S. Moore	SB	Sarcochore	Putranjivaceae	0.03	0.152	0.212	0.212	0.001	0.049	0.083	0.053	ns
330	Drypetes spinosodentata (Pax) Hutch.	SB	Sarcochore	Putranjivaceae	0.061	0.303	0.212	0.091	0.002	0.156	0.085	0.005	0.039
331	Duboscia macrocarpa Bocq.	NPLD	Sarcochore	Malvaceae	0.152	0.212	0.758	0.606	0.005	0.015	0.43	0.198	0.001
332	Entandrophragma angolense (Welw.) C. DC.	NPLD	Pterochore	Meliaceae	0.03	0.091	0.424	0.061	0.001	0.009	0.345	0.004	0.001
333	Entandrophragma candollei Harms	NPLD	Pterochore	Meliaceae	0.03	0.152	0.364	0.121	0.001	0.028	0.229	0.018	0.002
334	Erythrophleum suaveolens (Guill. & Perr.) Brenan	P	Ballochore	Fabaceae	0.03	0.061	0.455	0.515	0.001	0.002	0.231	0.226	0.008
335	Garcinia sp.	SB	Sarcochore	Clusiaceae	0.03	0.273	0.152	0.03	0.001	0.136	0.064	0.001	0.032
336	Greenwayodendron suaveolens (Engl. & Diels) Verdc.	SB	Sarcochore	Annonaceae	0.515	0.909	1	0.848	0.013	0.103	0.658	0.172	0.001
337	Hylodendron gabunense Taub.	P	Pterochore	Fabaceae	0.515	0.242	0.697	0.515	0.078	0.018	0.415	0.093	0.001
338	Irvingia gabonensis (Aubry-LeComte ex O'Rorke) Baill.	SB	Sarcochore	Irvingiaceae	0.091	0.273	0.758	0.576	0.002	0.022	0.482	0.153	0.001
339	Irvingia grandifolia (Engl.) Engl.	SB	Sarcochore	Irvingiaceae	0.152	0.576	1	0.879	0.002	0.029	0.715	0.193	0.001
340	Klainedoxa gabonensis Pierre ex Engl.	P	Sarcochore	Irvingiaceae	0.03	0.121	0.788	0.545	0.001	0.004	0.498	0.172	0.001
341	Lecaniodiscus cupanioides Planch.	NPLD	Sarcochore	Sapindaceae	0.061	0.091	0.515	0.091	0.002	0.005	0.443	0.005	0.001

342	<i>Leplaea cedrata</i> (A. Chev.) E. J. M. Koenen & J. J. de Wilde	SB	Sarcochore	Meliaceae	0.03	0.182	0.485	0.212	0.001	0.03	0.266	0.056	0.001
343	<i>Leplaea thompsonii</i> (Sprague & Hutch.) E. J. M. Koenen & J. J. de Wilde	SB	Sarcochore	Meliaceae	0.061	0.182	0.697	0.364	0.001	0.015	0.492	0.07	0.001
344	<i>Macaranga assas</i> Amougou	P	Sarcochore	Euphorbiaceae	0.091	0.03	0.152	0.091	0.014	0.002	0.091	0.018	ns
345	<i>Maesopsis eminii</i> Engl.	P	Sarcochore	Rhamnaceae	0.061	0.03	0.091	0.091	0.009	0.002	0.042	0.028	ns
346	<i>Markhamia tomentosa</i> (Benth.) K. Schum. ex Engl.	P	Pterochore	Bignoniaceae	0.03	0.03	0.394	0.152	0.001	0.001	0.303	0.027	0.001
347	<i>Myrianthus arboreus</i> P. Beauv.	NPLD	Sarcochore	Urticaceae	0.333	0.364	0.576	0.273	0.027	0.042	0.381	0.039	0.001
348	<i>Nesogordonia papaverifera</i> (A. Chev.) Capuron ex N. Hall?	SB	Pterochore	Malvaceae	0.03	0.121	0.273	0.273	0.001	0.017	0.148	0.078	0.042
349	<i>Omphalocarpum elatum</i> Miers	SB	Barochore	Sapotaceae	0.03	0.03	0.364	0.061	0.001	0.001	0.3	0.005	0.001
350	<i>Oncoba glauca</i> (P. Beauv.) Planch.	P	Ballochore	Salicaceae	0.152	0.212	0.636	0.03	0.018	0.031	0.459	0	0.001
351	<i>Pentaclethra macrophylla</i> Benth.	NPLD	Ballochore	Fabaceae	0.121	0.394	0.848	0.879	0.002	0.037	0.449	0.317	0.001
352	<i>Petersianthus macrocarpus</i> (P. Beauv.) Liben	NPLD	Pterochore	Lecythidaceae	0.242	0.485	0.848	0.939	0.011	0.039	0.365	0.418	0.001
353	<i>Phyllocosmus africanus</i> (Hook. f.) Klotzsch	SB	Sarcochore	Ixonanthaceae	0.03	0.03	0.576	0.152	0.002	0.001	0.48	0.013	0.001
354	<i>Piptadeniastrum africanum</i> (Hook. f.) Brenan	NPLD	Pterochore	Fabaceae	0.061	0.242	0.394	0.424	0.002	0.044	0.181	0.139	0.052
355	<i>Pterocarpus soyauxii</i> Taub.	NPLD	Pterochore	Fabaceae	0.061	0.212	0.909	0.545	0.004	0.021	0.553	0.123	0.001
356	<i>Santiria trimera</i> (Oliv.) Aubr?v.	SB	Sarcochore	Burseraceae	0.121	0.424	1	0.485	0.002	0.035	0.804	0.048	0.001
357	<i>Sorindeia</i> sp.	SB	Sarcochore	Anacardiaceae	0.03	0.182	0.97	0.182	0	0.016	0.843	0.007	0.001
358	<i>Streblus usambarensis</i> (Engl.) C. C. Berg	SB	Sarcochore	Moraceae	0.152	0.212	0.212	0.03	0.007	0.08	0.12	0	ns
359	<i>Strombosia pustulata</i> Oliv.	SB	Sarcochore	Olacaceae	0.394	0.636	0.455	0.333	0.022	0.098	0.293	0.048	0.018
360	<i>Strombosia scheffleri</i> Engl.	SB	Sarcochore	Olacaceae	0.091	0.303	0.818	0.515	0.001	0.012	0.671	0.065	0.001
361	<i>Strombosiopsis tetrandra</i> Engl.	SB	Sarcochore	Olacaceae	0.273	0.636	0.97	0.909	0.008	0.085	0.564	0.233	0.001
362	<i>Tabernaemontana crassa</i> Benth.	SB	Sarcochore	Apocynaceae	0.273	0.879	0.97	0.121	0.005	0.224	0.7	0.001	0.001
363	<i>Tessmannia anomala</i> (Micheli) Harms	NPLD	Ballochore	Fabaceae	0.03	0.03	0.182	0.091	0.002	0.003	0.115	0.019	ns
364	<i>Trichilia dregeana</i> Sond.	SB	Sarcochore	Meliaceae	0.03	0.182	0.636	0.364	0	0.011	0.504	0.051	0.001
365	<i>Trichilia priuriana</i> A. Juss.	SB	Sarcochore	Meliaceae	0.121	0.333	0.333	0.273	0.003	0.038	0.248	0.033	0.011
366	<i>Trichilia welwitschii</i> C. DC.	SB	Sarcochore	Meliaceae	0.121	0.485	0.727	0.03	0.003	0.092	0.566	0	0.001
367	<i>Uapaca mole</i> Pax	P	Sarcochore	Phyllanthaceae	0.091	0.455	0.515	0.455	0.005	0.07	0.284	0.111	0.005
368	<i>Uapaca</i> sp.	P	Sarcochore	Phyllanthaceae	0.182	0.303	0.727	0.576	0.02	0.023	0.381	0.166	0.001
369	<i>Uapaca staudtii</i> Pax	P	Sarcochore	Phyllanthaceae	0.03	0.061	0.242	0.121	0.001	0.002	0.196	0.017	0.006
370	<i>Xylopia aethiopica</i> (Dunal) A. Rich.	P	Sarcochore	Annonaceae	0.091	0.212	0.424	0.273	0.007	0.036	0.186	0.086	0.024

56

57

58

Table S4: Similarity (Sorensen's index) of species composition between different strata of juveniles (seedlings and saplings) and adjacent vegetation (small and large trees) at the species level.

	Seedlings	Sapling	Small trees
Sapling	0.50		
Small trees	0.36	0.59	
Large trees	0.41	0.61	0.77

59