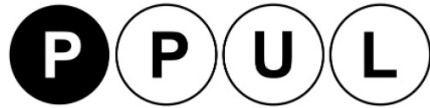


**[NeW-BLIV]**  
Post-Covid housing supply in  
the Brussels Capital Region



## Conceptualising the Covid-19 shock to understand how we live and work in cities



[ENHR 2023] 30.06.2023 / CONSTANCE UYTTEBROUCK

# COVID-19 AND WORK FROM HOME (WFH)

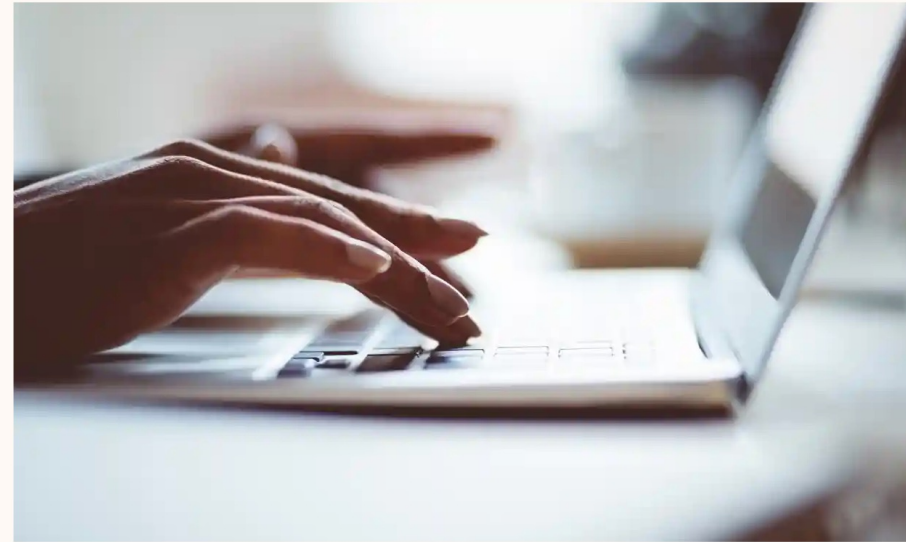
2

- WFH during Covid-19 > spatial, policy, institutional consequences?
- Outcome of work flexibilization  
> effects on housing and cities
- WFH as first generation of telework
- Pandemic v. live-work relationships in housing and urban studies

The work from home revolution is here to stay - if you're rich, white and live in London

*André Spicer*

Hybrid work benefits both our professional and personal lives, but data suggests it has entrenched existing inequalities



# RESEARCH GOALS AND QUESTION

3

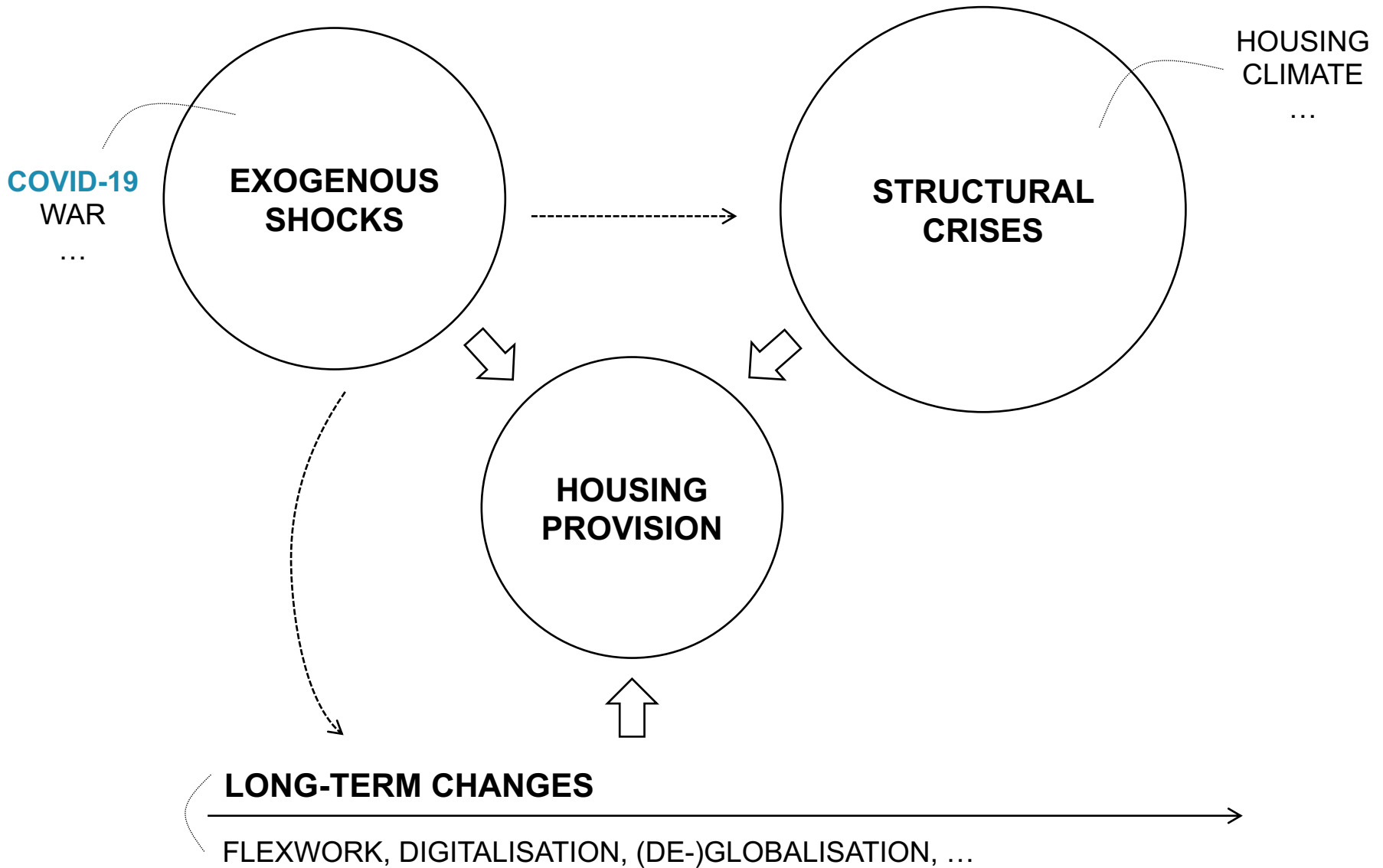
- Need for **conceptualizing Covid-19** as a study object
- Goal: delivering a **research agenda** for housing and urban studies
- What changes in **urban live-work relationships** made apparent under Covid-19 require **further research**?

## Cities after coronavirus: how Covid-19 could radically alter urban life



# ANALYTICAL FRAMEWORK

4



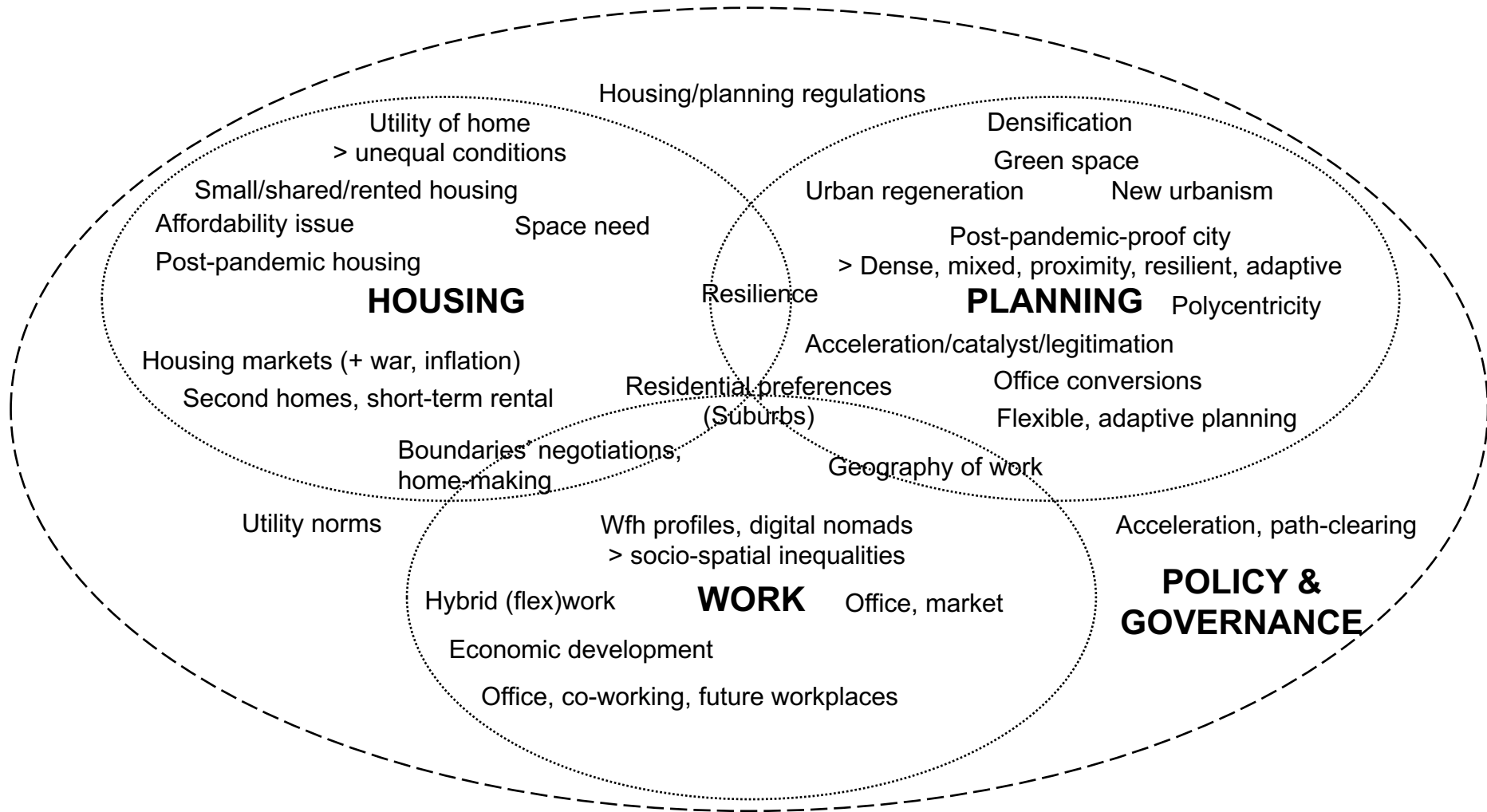
# BACKGROUND

5

- Epidemic diseases, [sanitary movements](#) > urban renewal, slum clearance, new housing regulations [Sanitary city]
- Industrialisation > [segregation of living and working](#) [Fordist city], modernist housing
- 1970s: ICT, knowledge economy > flexible work arrangements
- [Flexible housing](#) markets, shrinking domestic space, housing financialization
- Planning discourse drawing on [proximity, density, mixed-use](#) > ‘live-work’ environment
- Geography of work and residential locations: knowledge economy in global cities and polycentric regions v. [relaxed home-work constraints](#)

# LITERATURE MAPPING

6



# SHIFT TO HYBRID WORK

- WFH normalised in advanced services and knowledge/tech sectors
- Trend more moderate than expected
- Highly-educated workers with office-based employment in densely-populated areas with technology infrastructure
- > Socio-economic-spatial inequalities
- Shift to hybrid work > new office roles and workplaces, spatial redistribution

## New York skyscrapers sit empty as Manhattan reels from rise of home working

Staff in their twenties and thirties are driving an exodus of white-co-

By Riya Makwana

20 May 2023 • 12:00pm



# POST-PANDEMIC HOUSING

8

- Accelerated changes in the **utility of home** > domestic boundaries' negotiations
- **Small housing** and shared housing arrangements in the PRS not suitable for WFH
- Space demand >< rising **property prices** in large cities and their suburbs despite accumulated **uncertainty**
- **Post-pandemic** (or pandemic-resilient) housing: **adaptive** space, improved **flexibility** and **resilience**
- **Affordability**, quality and tenure security more than ever on top of the policy agenda





# PLANNING DISCOURSES

9

- Hybrid work legitimates discourses based on urban **proximity, densification** and **mixed-use**
- Relocations in the continuity of **pre-pandemic trends** (increase: second homes; metropolitan suburbs)
- Densification/mixed-use > attractive environments for homeworkers worsening **socio-spatial inequalities** with lower-income neighbourhoods
- **Controversy** on proximity concepts (15')

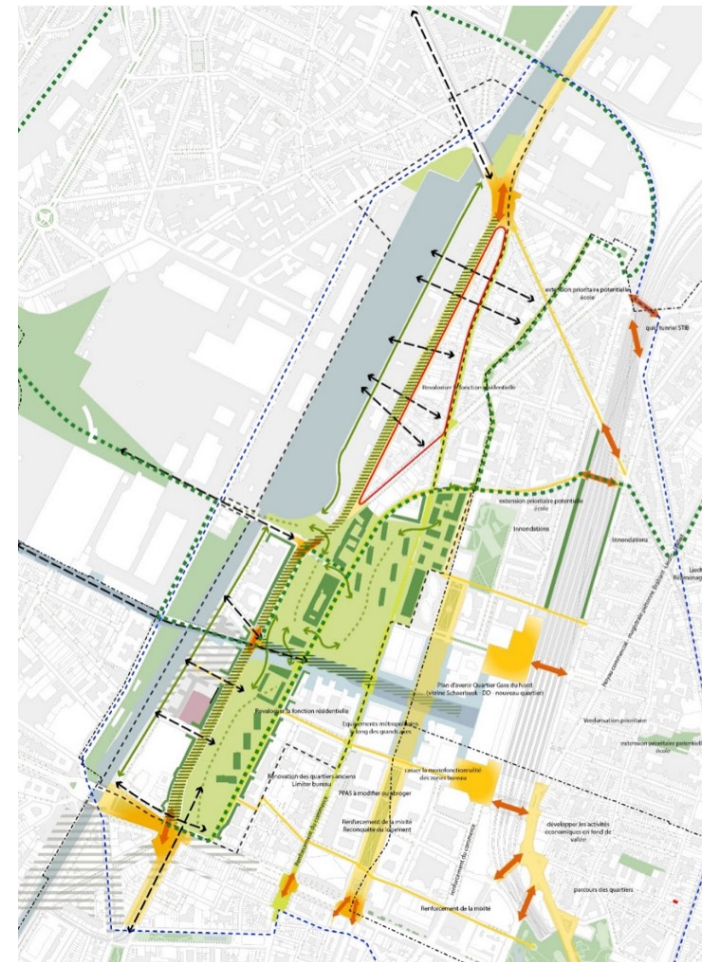


(Brussels' Northern district – ZIN exemplary project)

# PLANNING DISCOURSES

10

- Post-pandemic city **resilient** to shocks and **adaptive**
- Improve economic, social and physical conditions
- Need for **public health** and housing provision **policy**
- Advocacy for planning systems that embrace **complexity, uncertainty** and **adaptivity**



(Northern district – Perspective.brussels, 2021)

# RESEARCH AGENDA

11

- WFH and Covid-19 **conceptualisations**
- **Urban housing provision**: policy responses, instruments, typologies
- **WFH-oriented planning**: alternatives, challenge the back-to-the-status-quo

# WFH AND COVID-19 CONCEPTUALISATIONS

12

- WFH : *any kind of work* beyond digital work, including unpaid domestic work > reintegrate different kinds of work into different kinds of housing
- WFH during the pandemic = upscaling of first-generation telework using digital innovations > *Upscaling role* of Covid-19
- Covid-19 v. accumulated shocks and crises > *prospective tools* to discuss long-term structural effects on living and working in cities
- Live-work paradigms reinforced and Covid-19 as short-term catalyser > *long-term changes* and their *institutionalisation* across different contexts?

# URBAN HOUSING PROVISION

13

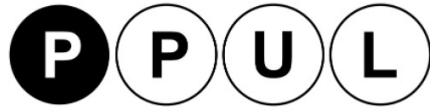
- Compare actors' **policy responses** to accumulated uncertainties in terms of housing provision in different housing systems
- Explore how the pandemic may enable **design** principles and **regulations** that foster housing **quality** and **resilience**
- **WFH effects** on housing provision in the context of **shrinking domesticities**
- New **urban housing** typologies that address health, space, flexibility,... issues

# CRITICAL ANALYSIS OF WFH-ORIENTED PLANNING

14

- Investigate the opportunities and risks of WFH-oriented planning and urban regeneration strategies centred on remote workers (inequalities, urban commodification).
- Explore alternative ways of planning post-pandemic or pandemic-resilient cities in different planning regimes.
- Challenge the ‘back to status quo’ assumption and improve knowledge of the ‘post-pandemic’ geography of urban (and metropolitan) living and working
- Identify possible reallocations of capital in second-tier cities and regions – as observed during the Spanish Flu – to discuss possible inequalities’ mitigation

**[NeW-BLIV]**  
Post-Covid housing supply in  
the Brussels Capital Region



**Thank you**



**ENHR 2023] XX.06.2023 / CONSTANCE UYTTEBROUCK**