

Chemotherapy is not needed when complete evacuation of gestational choriocarcinoma leads to hCG normalisation.

BOLZE PA¹, SCHOENEN S², MARGAILLAN M¹, BRAGA A³, SAUTHIER P⁴, ELIAS K⁵, SECKL M⁶, WINTER M⁷, COLTHER J⁸, MASSUGER LAG⁹, JONEBORG U¹⁰, UNDURRAGA MALINVERNO M¹¹, ISA NIEMANN¹², LURAIN J¹³, HAHN S¹⁴, HAJRI T¹, MASSARDIER J¹, YOU B¹, GOLFIER F¹, GOFFIN F².

¹Lyon - France, ²Liège - Belgium, ³Rio de Janeiro - Brazil, ⁴Montréal - Canada, ⁵Boston - US, ⁶London - US, ⁷Sheffield - US, ⁸Cork - Ireland, ⁹Amsterdam - Netherlands, ¹⁰Stockholm - Sweden, ¹¹Genève - Switzerland, ¹²Aarhus - Denmark, ¹³Chicago - USA, ¹⁴Leuven - Belgium.

BACKGROUND: The standard treatment for gestational choriocarcinoma is chemotherapy¹.

OBJECTIVE: To assess the recurrence rate of gestational choriocarcinoma that normalised hCG level after complete evacuation/excision without chemotherapy.

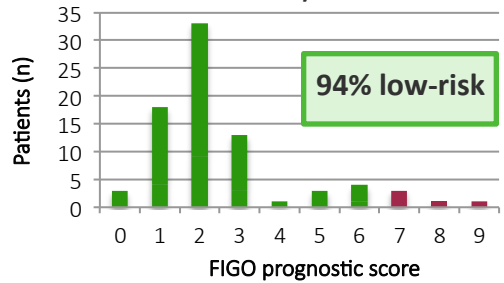
MATERIALS AND METHODS:

- **Retrospective multicenter international cohort study from 1981 to 2017**
- Follow-up extended to **2023**
- **11 gestational trophoblastic disease reference centers** included
- Clinical and biological data of included patients extracted from each center's database
- **Inclusion criteria:**
 - historical diagnosis of **gestational choriocarcinoma** in any kind of placental tissue
 - 1 normal serum hCG** level following by at least **6 months** of monitoring hCG levels
 - patient did **not receive any oncological treatment** for the choriocarcinoma

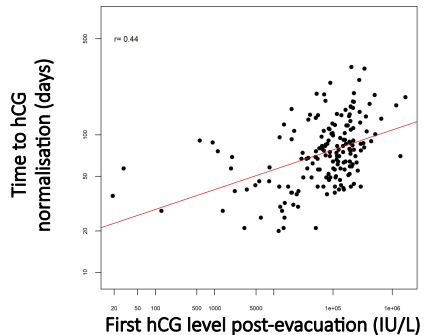
Data (n=80)

Age (median, year)	34
Tumour size (cm, %)	
- < 3cm	53 (81%)
- > 5cm	4 (6%)
Type of tumour excision (n)	
- Uterine curettage	30
- Hysterectomy	21
- Term placenta	15
- Fallopian tube	12
- Lung resection	2
Time to hCG normalisation (median, day)	48
Follow-up (median, month)	35
Recurrence (n)	0

Distribution of FIGO/WHO risk scores



Timing of hCG normalisation is correlated with initial hCG level



RESULTS

- **No recurrence of choriocarcinoma among 80 patients** with completely evacuated gestational choriocarcinoma and whose **hCG level normalised** without any other oncological therapy after a **median follow-up of 35 months**.
- For **80%** of the patients, serum **hCG normalised** within **3 months** post-evacuation. **High initial hCG level** initially (>10,000UI/L) is **associated** with a **longer interval** for hCG normalisation ($p < .0001$).
- **FIGO/WHO risk score ≤ 6** in **94%** of cases.

CONCLUSIONS

In a **selective population** of patients with **hCG normalisation** after complete evacuation of choriocarcinoma, the **expectative management without additional treatment** is a **safe option**.