

# Belgian breeds

## Belgian Blue Cattle



## Pietrain pig



## Belgian Texel Sheep



## Ardennaise Poultry breed



## Ardennes Horse



## Belgian Blue cattle



## Belgian Blue cattle

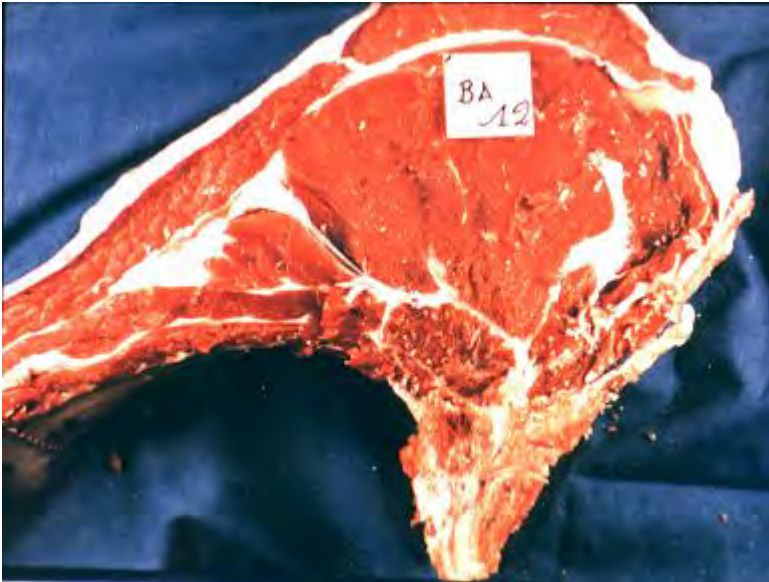


## Belgian Blue cattle

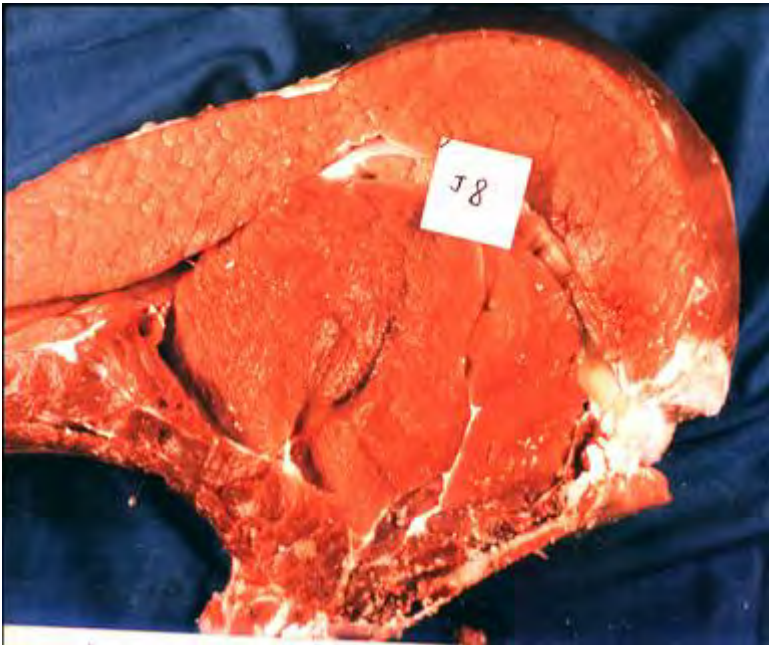


View of the 7<sup>th</sup> rib (right side of conventional and double muscling (BBB breed))

Conventional



Double muscling



## 7<sup>th</sup> rib

Copyright nutrition



## Filet



Results of Belgian Blue Bulls used in crossbreeding with Zebu Nelore cattle in Brazil

## Zebu Nelore (Brazil)



**Aladin, Belgian Blue x Nelore, 1240 Kg  
at 39 month**



## Results of Belgian Blue Bulls used in crossbreeding with local cattle in Indonesia

### Belgian Blue White x Zebu Brahman in Indonesia



Variable	Breed	Age (day)			
		0	60	120	180
<b>Body weight (kg)</b>					
	BBBxBX	32.17±5.17	78.19±10.67 <sup>a</sup>	115.81±15.61 <sup>b</sup>	164.71±20.77 <sup>c</sup>
	WagyuxBX	29.15±10.95	67.19±6.85 <sup>b</sup>	104.55±11.44 <sup>b</sup>	141.60±11.32 <sup>b</sup>
	BXxBX	28.20±6.52	56.23±10.45 <sup>c</sup>	76.99±16.31 <sup>a</sup>	98.42±19.94 <sup>a</sup>
<b>Body length (cm)</b>					
	BBBxBX	63.50±3.90	69.64±4.37 <sup>a</sup>	82.02±4.34 <sup>b</sup>	89.91±3.57 <sup>b</sup>
	WagyuxBX	59.31±9.61	71.53±4.92 <sup>b</sup>	79.28±7.80 <sup>ab</sup>	89.73±10.03 <sup>b</sup>
	BXxBX	58.93±6.43	64.31±5.31 <sup>a</sup>	74.21±7.39 <sup>a</sup>	79.20±6.87 <sup>a</sup>
<b>Withers height (cm)</b>					
	BBBxBX	69.38±3.77 <sup>a</sup>	81.05±3.65	91.24±3.59	99.87±4.02 <sup>b</sup>
	WagyuxBX	70.00±6.95 <sup>ab</sup>	82.17±2.75	90.97±6.64	94.99±7.70 <sup>ab</sup>
	BXxBX	73.87±4.73 <sup>b</sup>	81.39±3.61	88.25±4.29	92.30±4.20 <sup>a</sup>
<b>Heart girth (cm)</b>					
	BBBxBX	72.08±4.38	99.85±6.97 <sup>a</sup>	113.37±6.86 <sup>c</sup>	128.42±6.73 <sup>c</sup>
	WagyuxBX	71.54±8.66	91.83±3.29 <sup>a</sup>	104.88±6.66 <sup>b</sup>	114.85±6.79 <sup>b</sup>
	BXxBX	74.67±6.80	89.64±6.07 <sup>a</sup>	96.12±7.09 <sup>a</sup>	103.24±5.66 <sup>a</sup>

Variable	Breed	Age (60 days)			
		1 <sup>st</sup>	2 <sup>nd</sup>	3 <sup>rd</sup>	total
<b>Body weight (kg/day)</b>					
	BBBxBX	0.77±0.22 <sup>c</sup>	0.63±0.11 <sup>b</sup>	0.82±0.16 <sup>a</sup>	0.74±0.13 <sup>a</sup>
	WagyuxBX	0.63±0.17 <sup>b</sup>	0.62±0.22 <sup>b</sup>	0.62±0.15 <sup>b</sup>	0.62±0.06 <sup>b</sup>
	BXxBX	0.47±0.17 <sup>a</sup>	0.35±0.13 <sup>a</sup>	0.36±0.16 <sup>a</sup>	0.39±0.11 <sup>a</sup>
<b>Body length (cm/day)</b>					
	BBBxBX	0.10±0.12 <sup>a</sup>	0.21±0.06	0.13±0.04 <sup>bc</sup>	0.15±0.03 <sup>b</sup>
	WagyuxBX	0.20±0.13 <sup>b</sup>	0.13±0.12	0.17±0.10 <sup>b</sup>	0.17±0.03 <sup>b</sup>
	BXxBX	0.09±0.07 <sup>a</sup>	0.17±0.13	0.08±0.08 <sup>a</sup>	0.11±0.03 <sup>a</sup>
<b>Withers height (cm/day)</b>					
	BBBxBX	0.21±0.08 <sup>b</sup>	0.17±0.05 <sup>c</sup>	0.14±0.03 <sup>c</sup>	0.18±0.02 <sup>c</sup>
	WagyuxBX	0.20±0.08 <sup>bc</sup>	0.15±0.08 <sup>ab</sup>	0.07±0.07 <sup>a</sup>	0.14±0.02 <sup>b</sup>
	BXxBX	0.13±0.04 <sup>a</sup>	0.11±0.05 <sup>a</sup>	0.07±0.04 <sup>a</sup>	0.10±0.02 <sup>a</sup>
<b>Heart girth (cm/day)</b>					
	BBBxBX	0.47±0.15 <sup>c</sup>	0.23±0.05 <sup>c</sup>	0.25±0.04 <sup>c</sup>	0.32±0.05 <sup>c</sup>
	WagyuxBX	0.34±0.11 <sup>a</sup>	0.22±0.09 <sup>b</sup>	0.17±0.06 <sup>a</sup>	0.24±0.03 <sup>b</sup>
	BXxBX	0.25±0.08 <sup>a</sup>	0.11±0.06 <sup>a</sup>	0.12±0.08 <sup>a</sup>	0.16±0.03 <sup>a</sup>





**Results of Belgian Blue Bulls used in crossbreeding with local cattle in Burkina Faso**

***Belgian Blue White x Zebu Azawak in Burkina Faso***

The first F1 product BBB x Zebu Azawak is born on 04/12/2002. This animal was maintained and fed under normal local conditions. At 4 months old, his weight was already 135 kg. This is quite exceptional as this weight is the one for local animals at 18 months old!



**Results of Belgian Blue Bulls used in crossbreeding with local cattle in Senegal**

***Belgian Blue White x Zebu Gobra in Senegal***

Farms : Niacoulrab, Wayembam, and Abdou Ndiaye, SENEGAL



**8 month**



**15 month**

(Photos Dr Bagoré Bathily)

Some results

<b>Identity</b>	<b>Date of birth</b>	<b>Age (month)</b>	<b>Breed</b>	<b>Sex</b>	<b>Weight (Kg)</b>	<b>Thoracic perimeter (cm)</b>	<b>Height at withers (cm)</b>
Wayembam	01/12/98	8	BBB x Zebu	M	202	133	104
Wayembam	01/12/98	15	BBB x Zebu	M	509	Slaughtered at 15 months 350 Kg of carcass with a killing out of 68%	

## Piétrain Pig







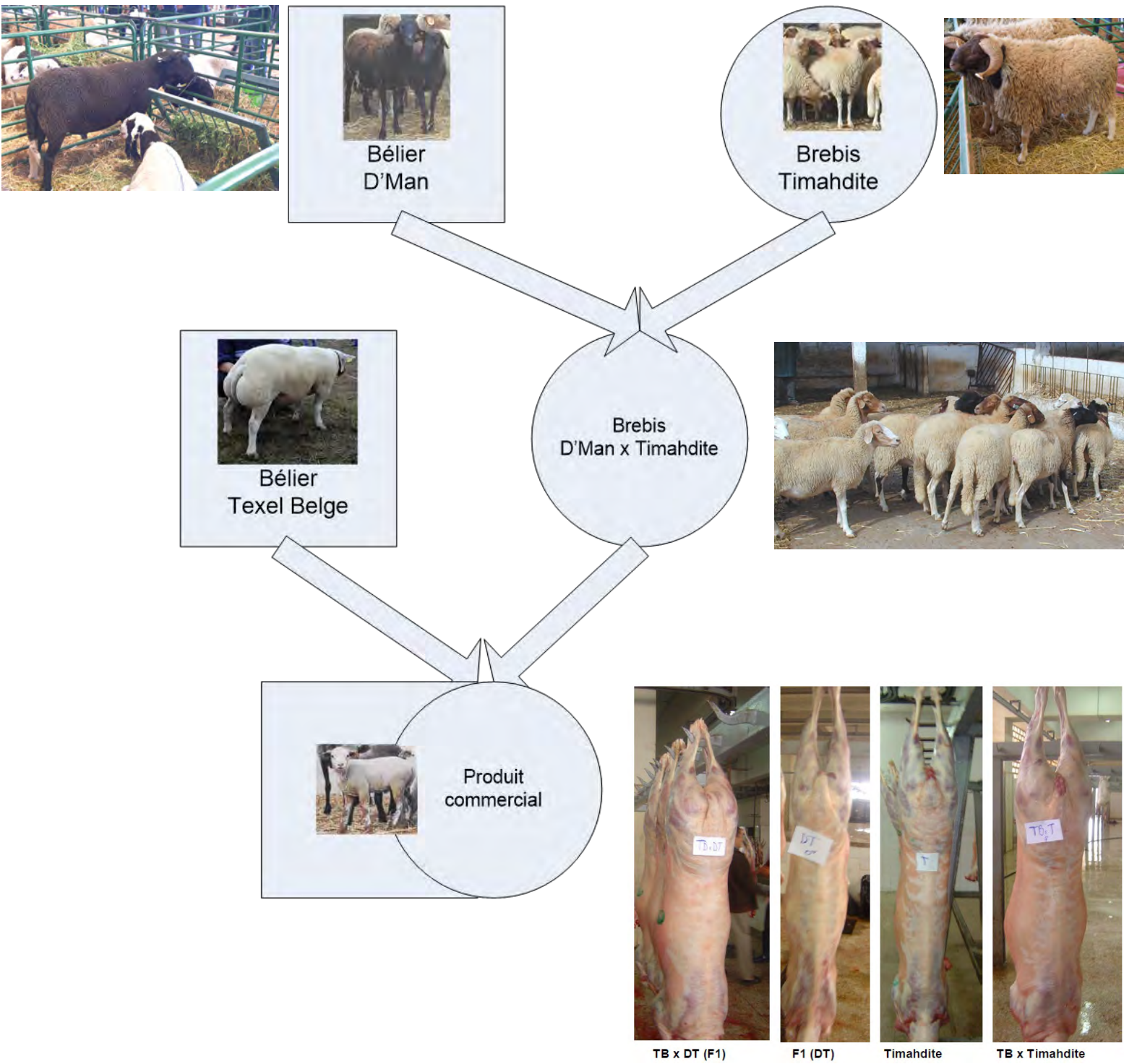
## Texel Double Muscled Belgian sheep

In the ovine species, the Walloon **Texel culards** are also well known. They present a killing out percentage higher than 52% in average, with a high percentage of meat and little fat. These sheep are rather unique and usable in terminal cross with ewes of prolific maternal lines. This type is largely used, in particular in England.

Some positive terminal cross tests of this type have already been done in 2002 in Morocco with local breed (D'Man and Timahdite). The results show more meat, less fat, less bone and a higher killing out percentage. Three Belgian rams were then transferred to Morocco in 2003 in order to confirm the results and expand the trial.



Belgian Double Muscled Texel in crossbreeding with D'Man x Timahdite sheep in Morocco (3-Way cross)



Source of variation	N	Fertility (%)	LSB (lambs)	LWB (kg)	LSW (lambs)	LWW (kg)
<b>Genotype</b>	388	*	***	***	***	***
<b>D'man (D)</b>	27	85±6	1.99±0.10	4.88±0.28	1.12±0.11	22.02±1.60
<b>Timahdite (T)</b>	75	94±3	1.15±0.05	4.14±0.15	1.06±0.06	23.21±0.78
<b>D x T</b>	138	99±3	1.20±0.04	4.42±0.11	1.14±0.04	24.68±0.59
<b>Texel x D</b>	22	88±6	1.88±0.11	5.46±0.30	1.46±0.12	28.66±1.61
<b>Texel x T</b>	67	81±4	1.18±0.06	5.00±0.17	1.14±0.07	28.19±0.91
<b>Texel x DT</b>	59	85±4	1.79±0.07	5.86±0.20	1.55±0.08	30.82±1.05

LSB – Litter size at birth  
LSW – Litter size at weaning

LWB – Litter weight at birth  
LWW – Litter weight at weaning (90 days)

**Ardennes Poultry**  
Slow growing black legs poultry



# Research team

## Academic staff



**Prof. Dr ANTOINE-MOUSSIAUX**

Nicolas DVM, PhD

Tel: +32 4 366 41 42

Email: nantoine@ulg.ac.be



**Prof. Dr DETILLEUX Johann**

DVM, PhD

Tel: +32 4 366 42 15

Email: jdetilleux@ulg.ac.be



**Prof. Dr Ir FARNIR Frédéric**

Ir, PhD

Tel: +32 4 366 41 28

Email: f.farnir@ulg.ac.be



**Prof. Dr LEROY Pascal**

DVM, PhD

Tel: +32 4 366 41 20

Email: pascal.leroy@ulg.ac.be

## Scientific staff



**Prof. Dr MICHAUX Charles**

DVM, PhD

Tel: +32 4 366 41 21

Email: charles.michaux@ulg.ac.be



**Dr MOULA Nassim**

DVM, PhD

Tel: +32 4 366 41 24

Email: nassim.moula@ulg.ac.be



**Dr BAISE Etienne**

Dr Sc, PhD

Tel: +32 4 366 41 23

Email: etienne.baise@ulg.ac.be

---

### Address

Faculty of Veterinary Medicine, University of Liege  
20 Boulevard de Colonster (B43), 4000 Liège, Belgium

### Contact

Tel: +32 4 366 41 21  
Fax: +32 4 366 41 22