

Aubinet C, Chatelle C, Gosseries O,  
Carrière M, Laureys S, Majerus S.



# *Residual implicit versus explicit language abilities in patients with disorders of consciousness*

Disorders of Consciousness: Insights From Neuroimaging,  
Clinical Neurophysiology, and Neurogenetics

IBIA Congress  
April 1st, 2023

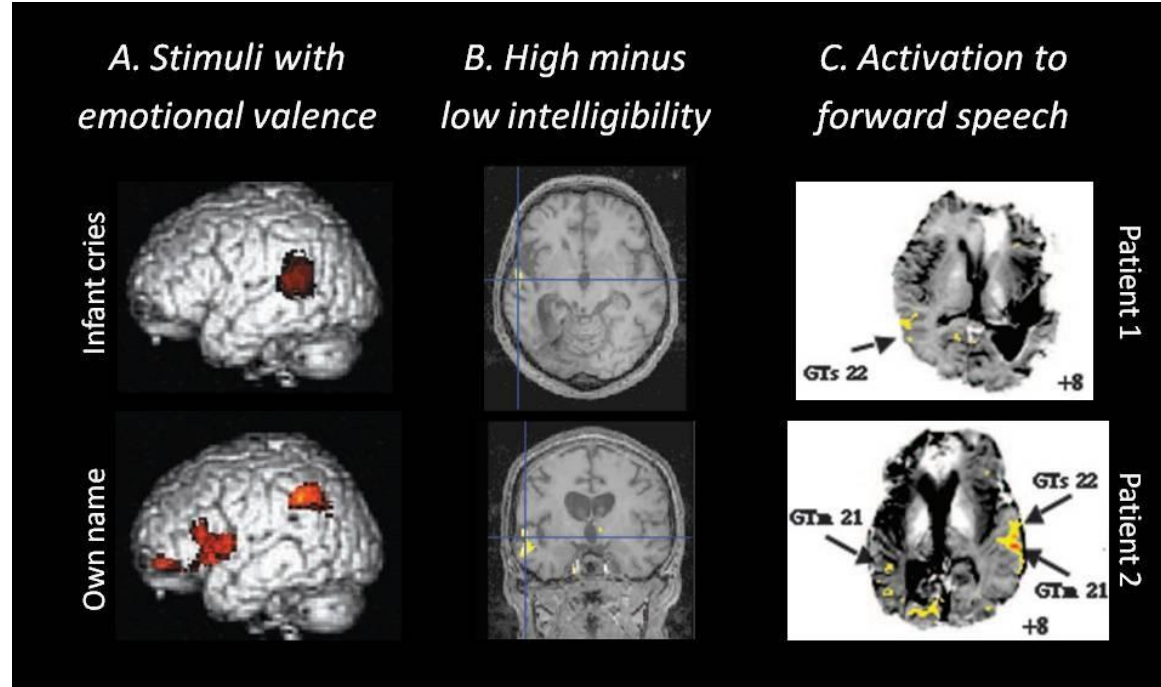


# Disclosure

No interest to disclose.



# Insights of residual language-related cortical processing in post-comatose patients

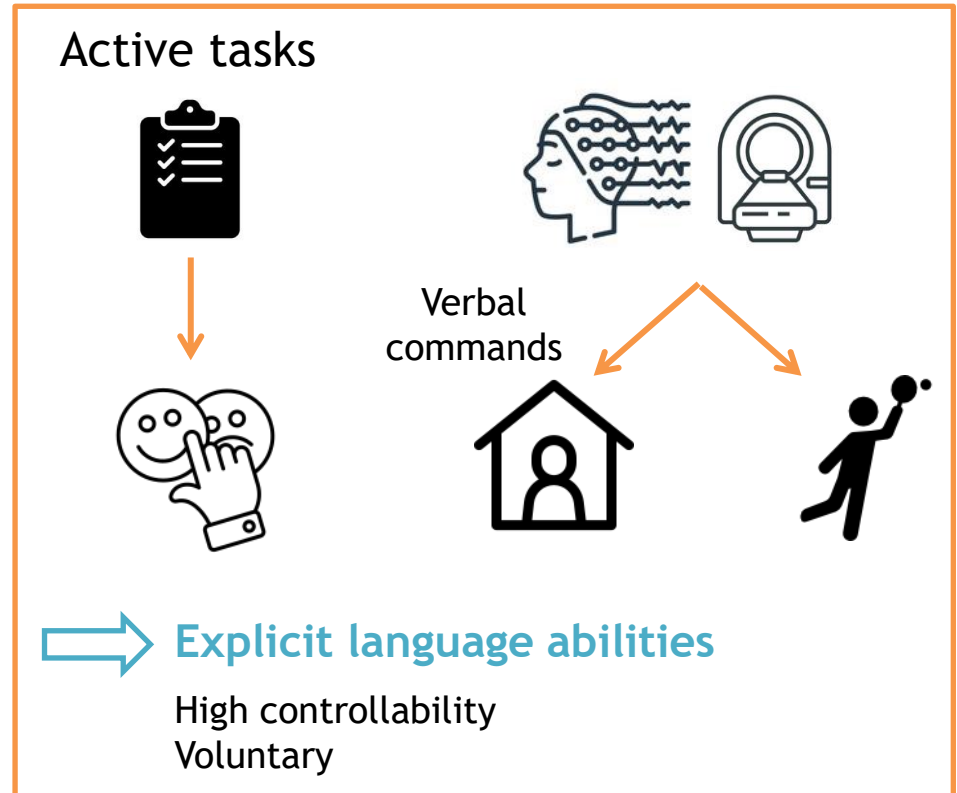
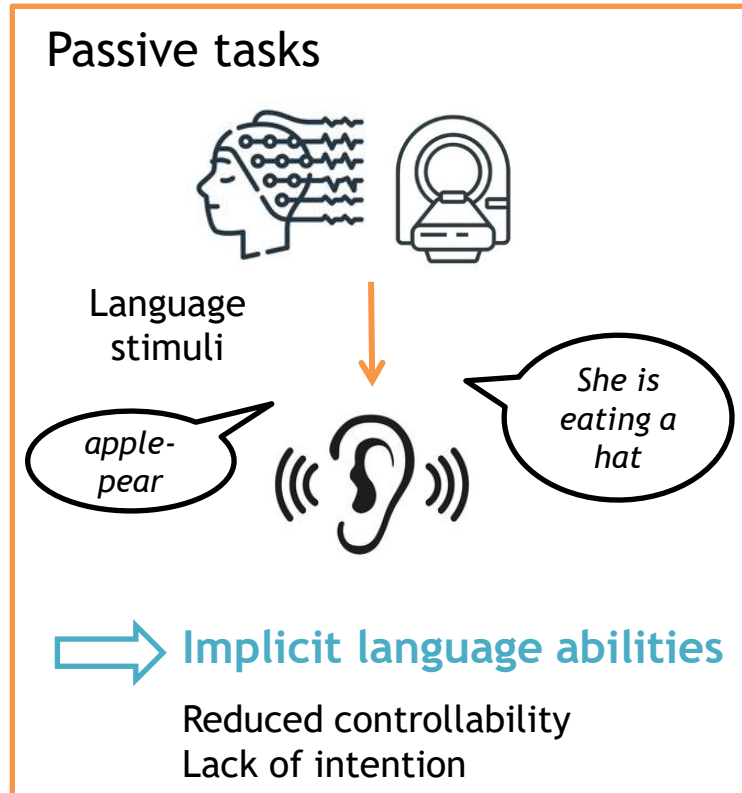


Laureys et al., 2004

Owen et al., 2005

Schiff et al., 2005

# Implicit vs. explicit language abilities in DoC patients



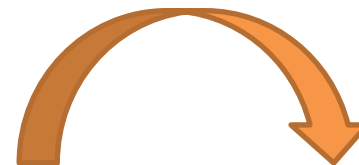
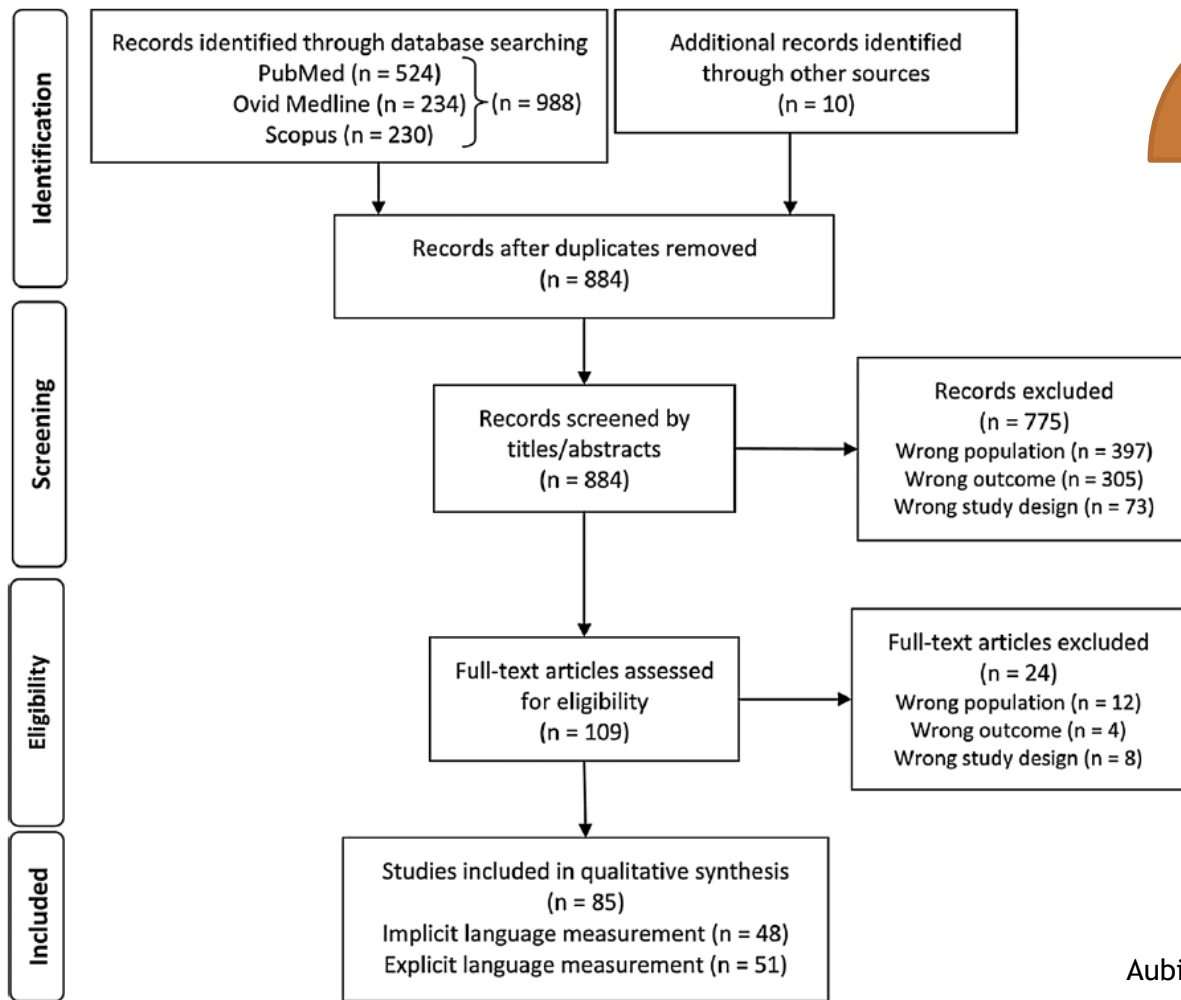
## Objectives

- 1) Identify the level and quality of **language residual abilities** as a function of DoC diagnosis
  - 2) Examine *how, when and where* **implicit and explicit language abilities reappear** after severe brain injury associated with impaired consciousness
- Review question:

*Which residual language abilities were observed in patients with DoC following severe acquired brain injury using neuroimaging, electrophysiological and behavioral bedside assessment methods?*

# Introduction - Methods - Results - Discussion

## Systematic review process



**Data extraction:**  
language assessment techniques,  
% of UWS/MCS/EMCS patients with implicit or explicit language abilities,...

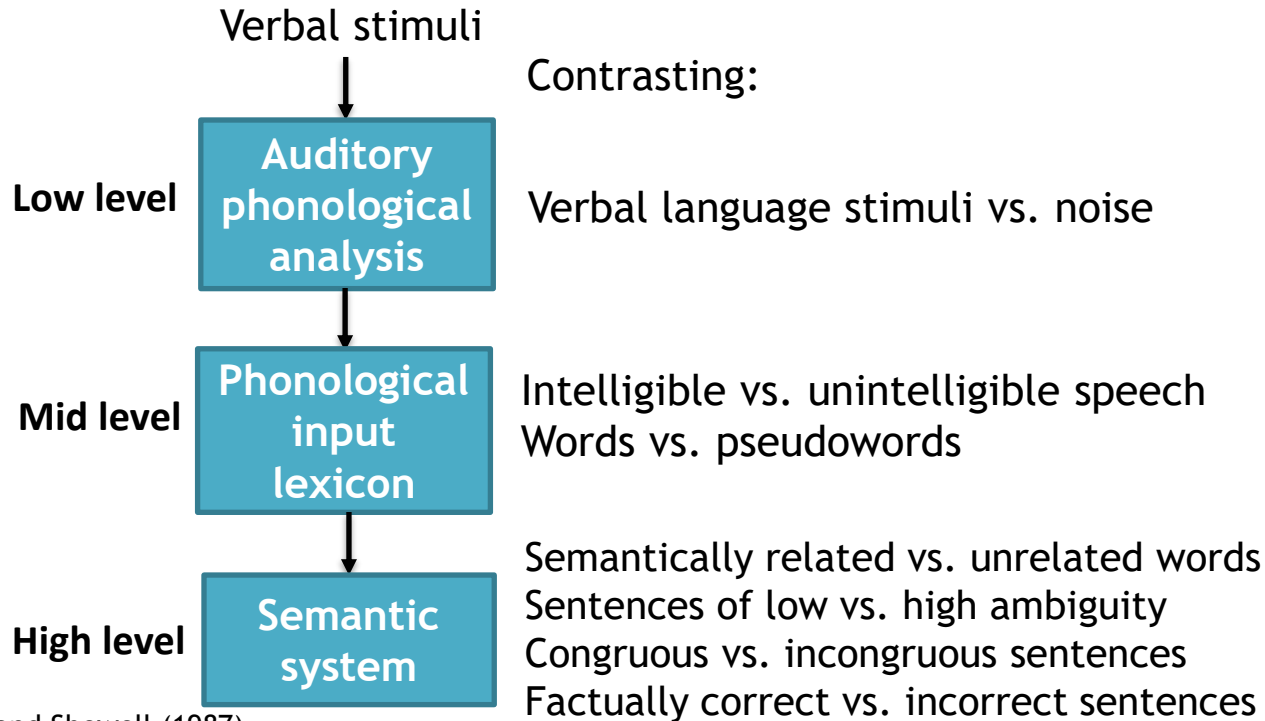
**Quality assessment:**  
QUADAS-2

→ Blinded investigators

**Data synthesis:**  
PRISMA guidelines

# 1) Which residual language abilities in the DoC entities?

## Implicit language processing



All language levels  
in all DoC  
→ High level also  
in UWS!

Brain response:  
UWS < MCS < EMCS

E.g.: Formisano et al., 2019;  
Kotchoubey et al., 2013;  
Balconi & Arangio, 2015;  
Kempny et al., 2018; Lechinger  
et al., 2016, Riseti et al.,  
2013, Rohaut et al., 2015;  
Tomaiuolo et al., 2016; ...

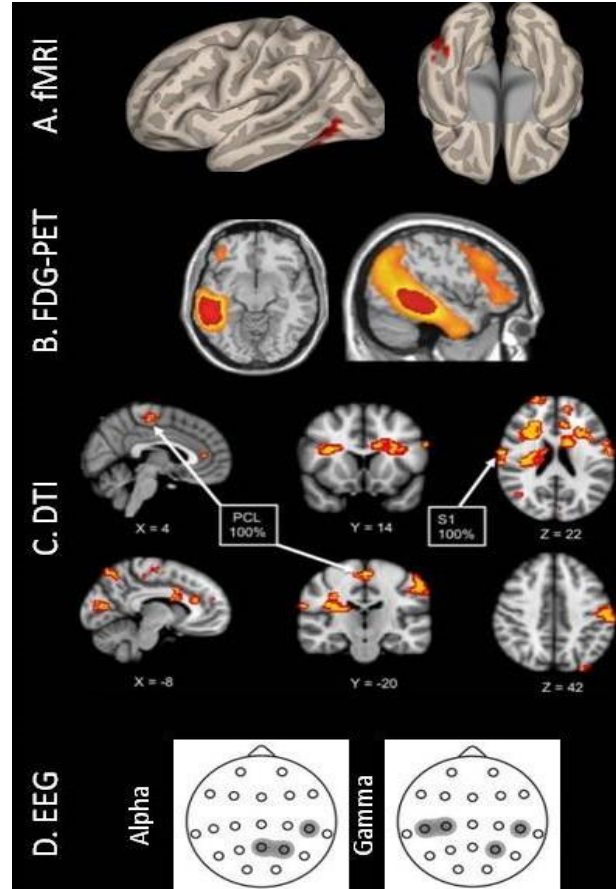
# 1) Which residual language abilities in the DoC entities?

## Explicit language processing

Command-following ability

- Overt

MCS- < MCS+



Aubinet et al., 2018

Aubinet et al., 2020

Zheng et al., 2017

Claassen et al., 2016



# 1) Which residual language abilities in the DoC entities?

## Explicit language processing

### Command-following ability

- Overt: language-specific assessments?



*Brief Evaluation of Receptive Aphasia (BERA)*



# 1) Which residual language abilities in the DoC entities?

## Explicit language processing

### Command-following ability

- Covert

Mental  
tasks

#### Motor imagery

- Tennis, navigation, swimming, hand moving,...

E.g.: Coleman et al., 2009; Braiman et al., 2018, Edlow et al., 2017; Bodien et al., 2017

#### Counting

- Subject's own name, targeted sound or word

E.g.: Hauger et al., 2015; Naci & Owen, 2013; Haug et al., 2018

#### Picture naming

Rodriguez-Moreno et al., 2010

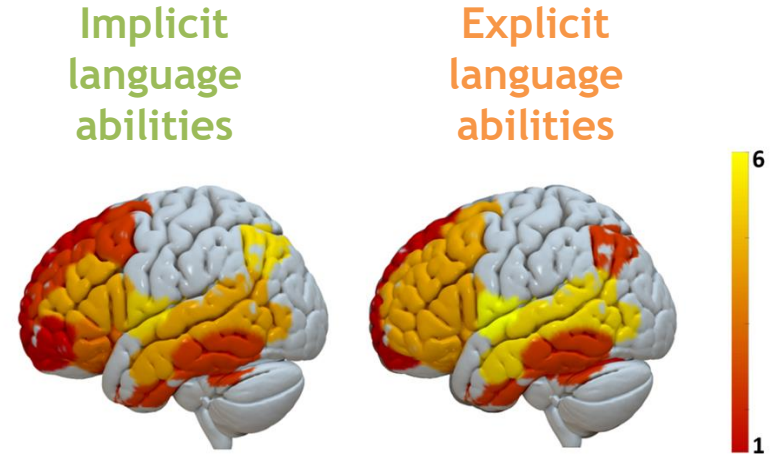
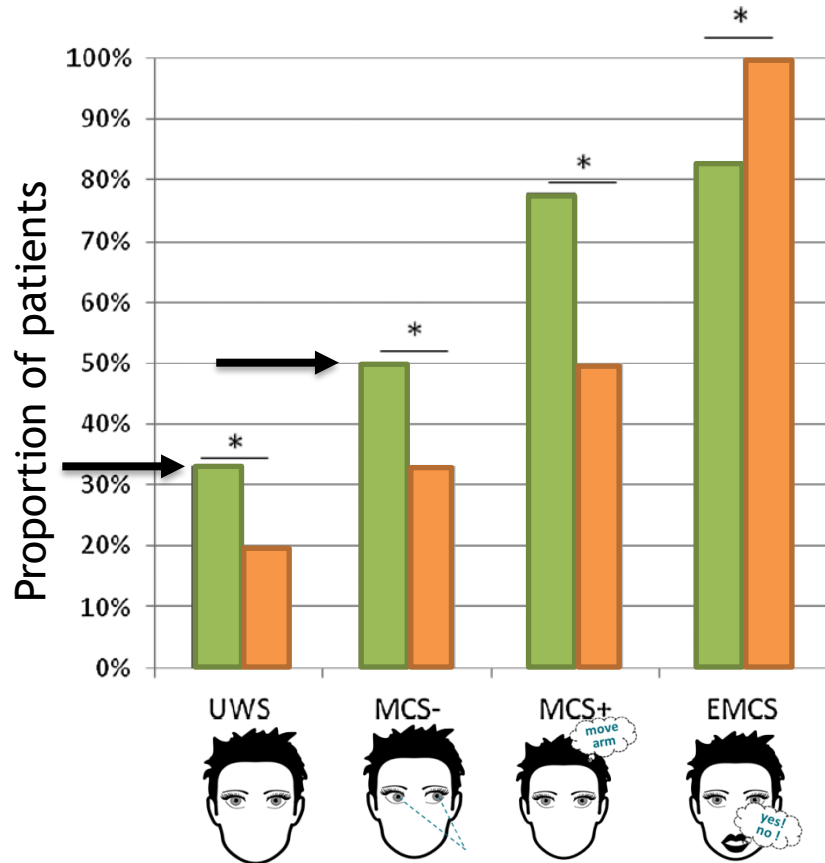
Potential residual brain response in all DoC categories

→ ~20% UWS and ~33% MCS-

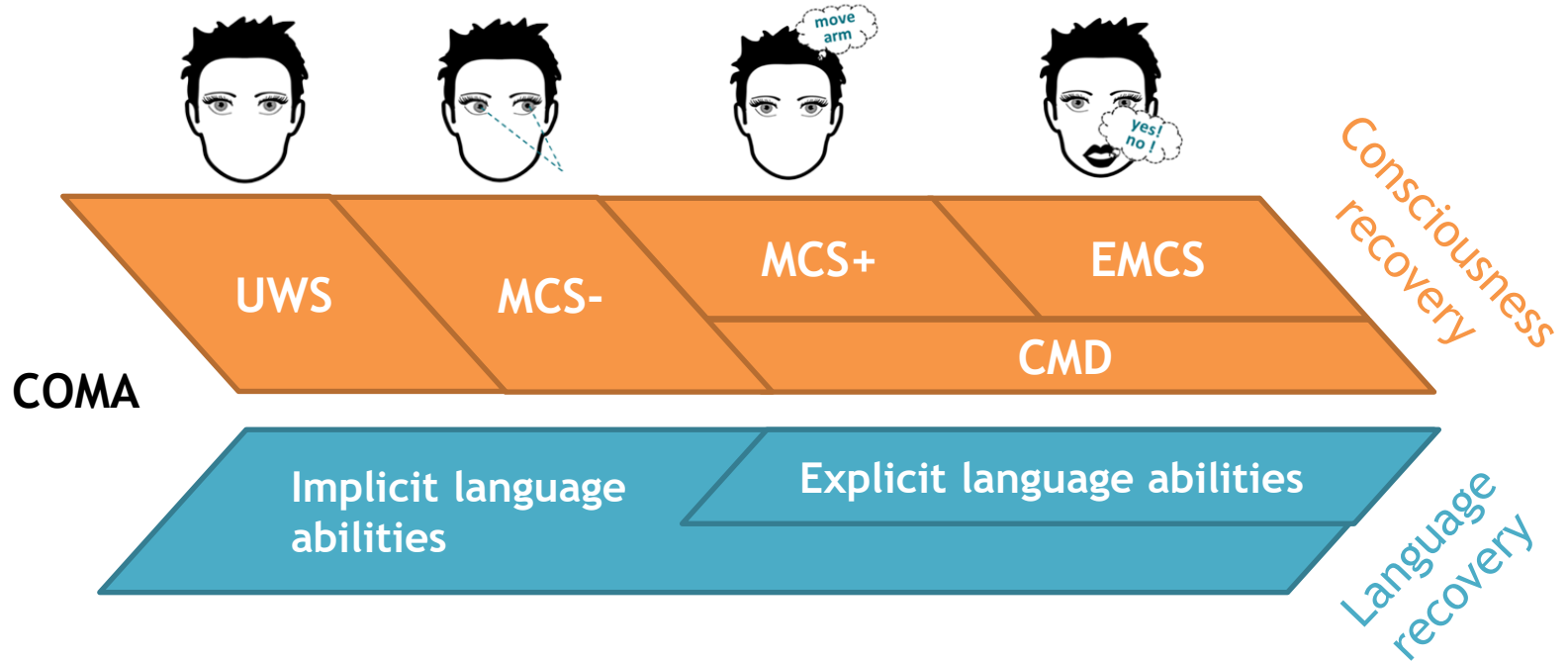
= CMD!



## 2) How, when and where do language abilities reappear?



# Recovery trajectory of both language functions and consciousness



# Implicit vs. explicit language assessment

## Implicit language assessment

- UWS patients with residual brain activity reflecting semantic processing
  - « Covert cortical processing »
  - *Is the presence of complex language processing in the absence of 'consciousness' possible?*
- DoC taxonomy

## Explicit language assessment

- CMD detection
  - Reduce DoC misdiagnosis

## Conclusion

- Residual language processing in all DoC categories
  - From low to high levels
- Language recovery // consciousness recovery
- But early implicit language recovery
  - Covert cortical processing: implicit language processing in absence of behavioral response
- Left-sided language network
  - Neural correlates of command-following
  - Passive & active paradigms
  - fMRI, EEG (ERPs), FDG-PET
- Standardized and sensitive multimodal language assessments



# Questions?

[caubinet@uliege.be](mailto:caubinet@uliege.be)  
[www.coma.uliege.be](http://www.coma.uliege.be)

Aubinet C, Chatelle C, Gosseries O, Carrière M, Laureys S, Majerus S. Residual implicit and explicit language abilities in patients with disorders of consciousness: A systematic review. *Neurosci Biobehav Rev.* 2022 Jan;132:391-409.