

Endovascular treatment for visceral arteries occlusive disease

Mawait N, Kerzmann A, Boesmans E, Holemans C, Szeceł D, Alexandrescu V, Defraigne JO

Department of Cardiovascular and Thoracic Surgery

University Hospital of Liege

Belgium



Disclosure

Speaker name:

Natacha Mawait

I have the following potential conflicts of interest to report:

- Consulting
- Employment in industry
- Stockholder of a healthcare company
- Owner of a healthcare company
- Other(s)

- I do not have any potential conflict of interest



Introduction

- Acute and chronic mesenteric ischemia (MI) are more commonly diagnosed due to the increased use of computed tomography.
- It is a rare condition ($\pm 2\%$ of the population) with high morbidity and mortality.
- We report our experience about endovascular approach for coeliac trunk and superior mesenteric artery occlusive disease.



Material & methods

- Between **August 2018** and **October 2021**, 43 patients had endovascular treatment for visceral arteries occlusive disease in our university hospital.
- They were reviewed retrospectively.



Results (1)

Men	15
Women	28
Mean age	71 years old
Smokers	36
Diabetes	9
AHT	24
Cardiac diseases	22
RI	12
Stroke	2
PAD	19



Results (2)

29 chronic MI (65 %)

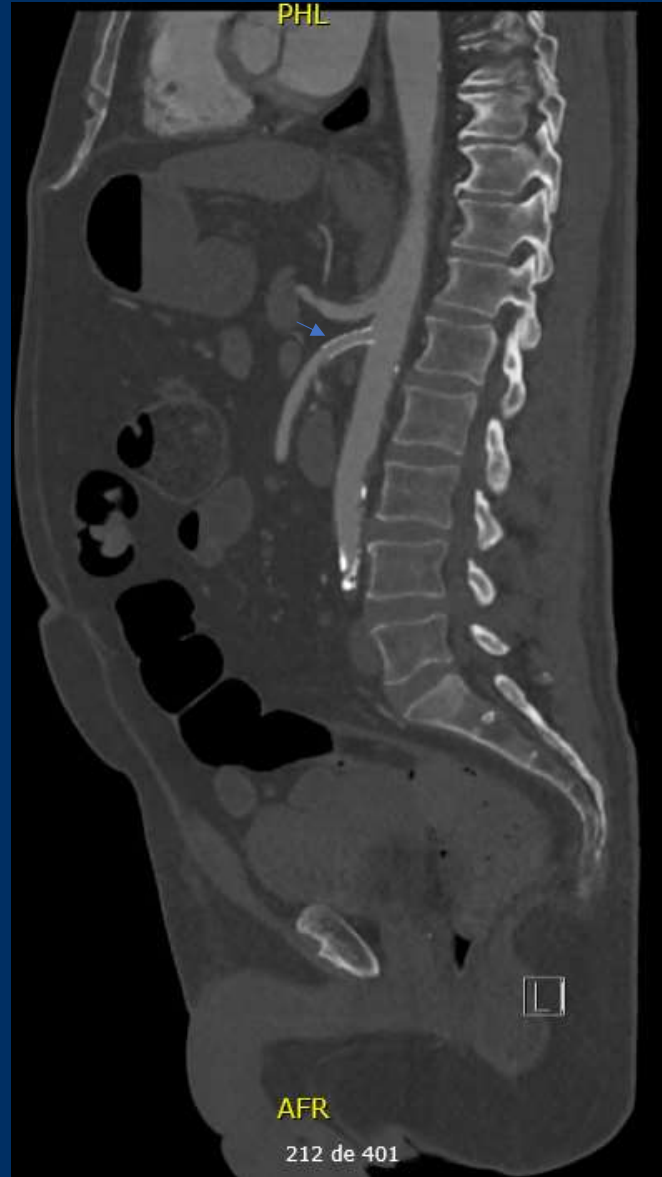
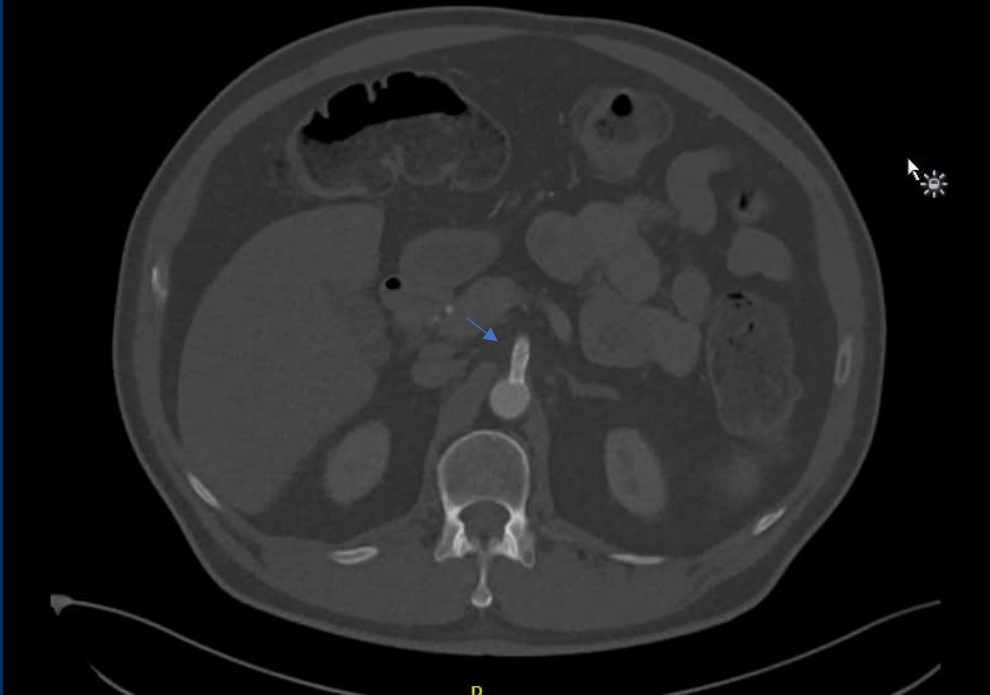
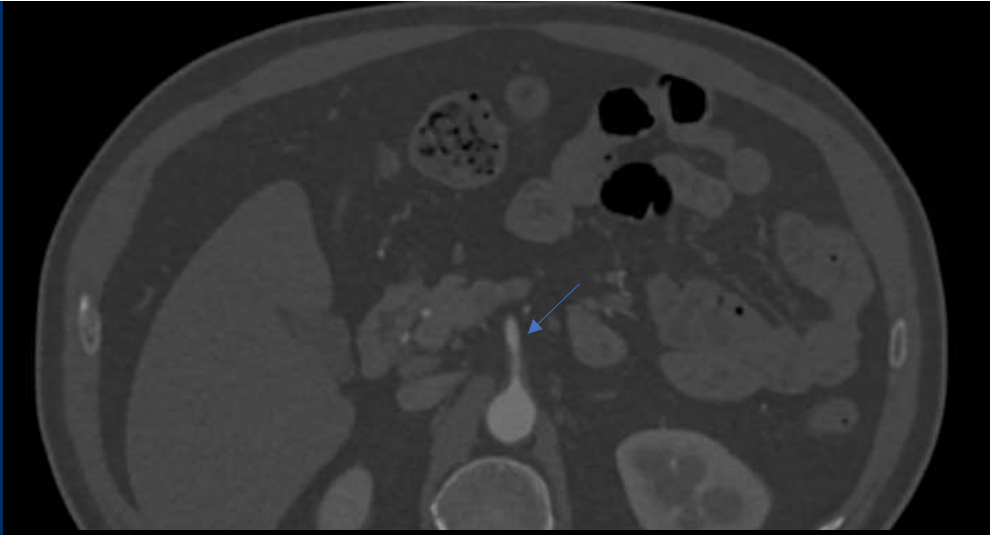
- All atherosclerosis
- All stenosis
- All treated by percutaneous ponction

14 acute MI

- All atherosclerosis
- 2 occlusions
- 1 dissection
- 1 embolization
- 4 ROMS (retrograde open mesenteric stenting)







Results (3)

Target vessel

- 33 SMA
- 8 CT
- 2 SMA + CT

Puncture

- 33 left humeral
- 1 radial
- 5 femoral
- 4 ROMS

Stent

- 40 bare metal stents
- 3 covered stents
- All balloon mounted stents



Results (4)

- Complications :
 - 7 hematoma
 - 2 false aneurysm
 - 1 humeral artery thrombosis
- All after left humeral puncture



Results (5)

- Mean follow up was 5 months
- 8 patients were lost of follow-up
- 13 deaths :
 - 2 early deaths (from AMI)
 - 11 deaths not related to MI
- 100% primary patency rate



Conclusions

- **Endovascular** therapy is the favorite approach for visceral arteries occlusive disease.
- **Primary patency** rate is high.
- **Humeral** artery puncture has to be avoided because it has more complications than others puncture sites.



www.escvs2022.com



70TH ESCVS CONGRESS & 7TH IMAD MEETING REGISTER NOW

20 | 23 JUNE 2022

Liège | Théâtre de Liège | Belgium

LOCAL ORGANIZING COMMITTEE

Natzi Sakalihan, CHU Liège, Belgium
Jean-Olivier Defraigne, CHU Liège, Belgium
ESCVS 2022 Congress Presidents



70th ESCVS
International Congress of the European Society
for Cardiovascular and Endovascular Surgery



7th IMAD meeting

