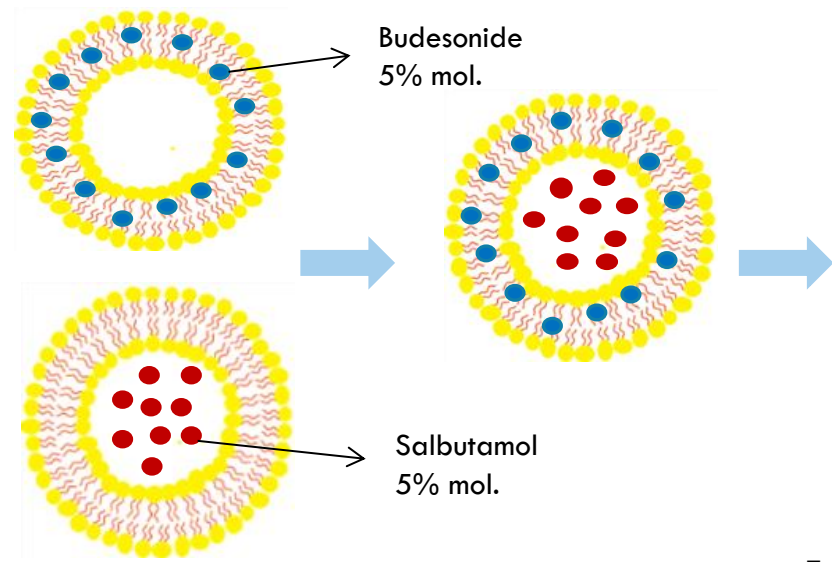


PGSS production conditions

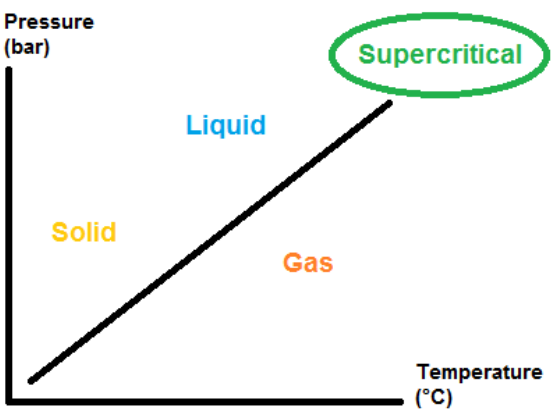
**Pressure : 240 bars**  
**Temperature : 80°C**  
**Stirring rate : 500 rpm**  
**Time : 30 minutes**  
**Lipid concentration : 45 mM**  
**Suspension volume: 14 mL**

Formulation  
Soy PC (65%) / CHOL (30%) / DSPE PEG 2000 (5%)



Physicochemical characteristics

	Double encapsulation by PGSS method	Thin film hydration control at 45 mM
EE of Budesonide (%)	<b>94 ± 4</b>	<b>85 ± 3</b>
EE of Salbutamol (%)	<b>40 ± 1</b>	<b>37 ± 7</b>
Liposomes size (nm)	<b>136,1 ± 0,80</b>	<b>172,28 ± 2,69</b>
Liposomes Pdl	<b>0,32 ± 0,02</b>	<b>0,12 ± 0,03</b>
Liposomes ZP (mV)	<b>-2,28 ± 0,13</b>	<b>-1,96 ± 1,46</b>



Liposomes size  
± 200 nm  
Pdl ≤ 0,3 5

Formulation perspectives

- Biocompatibility tests
- Dry form production
- Release determination
- Microscopy analysis