



# Multidimensional prognostic index and the risk of fractures: an 8-year longitudinal cohort study in the Osteoarthritis Initiative

Nicola Veronese<sup>1,2</sup> · Lee Smith<sup>3</sup> · Ekaterini Ziguora<sup>4</sup> · Mario Barbagallo<sup>1</sup> · Ligia J. Dominguez<sup>1</sup> · Antonella Barone<sup>4</sup> · Alberto Cella<sup>4</sup> · Cyrus Cooper<sup>5,6</sup> · Renè Rizzoli<sup>7</sup> · Jean-Yves Reginster<sup>8,9,10</sup> · Stefania Maggi<sup>11</sup> · Alberto Pilotto<sup>4,12</sup>

Received: 24 August 2021 / Accepted: 27 September 2021  
© The Author(s) 2021

## Abstract

**Summary** In this longitudinal study, with a follow-up of 8 years, multidimensional prognostic index (MPI), a product of the comprehensive geriatric assessment, significantly predicted the onset of fractures in older people affected by knee osteoarthritis.

**Purpose** Frailty may be associated with higher fracture risk, but limited research has been carried out using a multidimensional approach to frailty assessment and diagnosis. The present research aimed to investigate whether the MPI, based on comprehensive geriatric assessment (CGA), is associated with the risk of fractures in the Osteoarthritis Initiative (OAI) study.

**Methods** Community-dwellers affected by knee OA or at high risk for this condition were followed-up for 8 years. A standardized CGA including information on functional, nutritional, mood, comorbidity, medication, quality of life, and cohabitation status was used to calculate the MPI. Fractures were diagnosed using self-reported information. Cox's regression analysis was carried out and results are reported as hazard ratios (HRs), with their 95% confidence intervals (CIs), adjusted for potential confounders.

**Results** The sample consisted of 4024 individuals (mean age 61.0 years, females = 59.0%). People with incident fractures had a significant higher MPI baseline value than those without ( $0.42 \pm 0.18$  vs.  $0.40 \pm 0.17$ ). After adjusting for several potential confounders, people with an MPI over 0.66 (HR = 1.49; 95%CI: 1.11–2.00) experienced a higher risk of fractures. An increase in 0.10 point in MPI score corresponded to an increase in fracture risk of 4% (HR = 1.04; 95%CI: 1.008–1.07). Higher MPI values were also associated with a higher risk of non-vertebral clinical fractures.

**Conclusion** Higher MPI values at baseline were associated with an increased risk of fractures, reinforcing the importance of CGA in predicting fractures in older people affected by knee OA.

**Keywords** Multidimensional prognostic index · Comprehensive geriatric assessment · Fractures · Osteoarthritis Initiative

✉ Nicola Veronese  
nicola.veronese@unipa.it

<sup>1</sup> Geriatric Unit, Department of Internal Medicine and Geriatrics, University of Palermo, Via del Vespro, 141 90127 Palermo, Italy

<sup>2</sup> Biochemistry Department, College of Science, King Saud University, Riyadh, Saudi Arabia

<sup>3</sup> The Cambridge Centre for Sport and Exercise Sciences, Anglia Ruskin University, Cambridge, UK

<sup>4</sup> Department Geriatric Care, Orthogeriatrics and Rehabilitation, Frailty Area, E.O. Galliera Hospital, Genova, Italy

<sup>5</sup> MRC Lifecourse Epidemiology Unit, Southampton General Hospital, University of Southampton, Southampton, UK

<sup>6</sup> NIHR Musculoskeletal Biomedical Research Unit, University of Oxford, Oxford, UK

<sup>7</sup> Division of Bone Diseases, Faculty of Medicine, Geneva University Hospitals, Geneva, Switzerland

<sup>8</sup> WHO Collaborating Centre for Public Health Aspects of Musculoskeletal Health and Aging, Liège, Belgium

<sup>9</sup> Department of Public Health, Epidemiology and Health Economics, University of Liège, CHU Sart Tilman B23, 4000 Liège, Belgium

<sup>10</sup> Biochemistry Department, College of Science, King Saud University, Riyadh, Kingdom of Saudi Arabia

<sup>11</sup> Aging Branch, Neuroscience Institute, National Research Council, Padua, Italy

<sup>12</sup> Department of Interdisciplinary Medicine, University of Bari, Bari, Italy

## Introduction

Frailty is a common condition in older people, affecting approximately one in ten people after 60 years of age [1]. Frailty is associated with several negative outcomes including disability [2], higher risk of hospitalization [3], and mortality [4], including mortality for the recent COVID-19 epidemic [5]. Recent literature has also reported that frailty might be considered a potential risk factor for other medical conditions including cardiovascular disease [6], osteoarthritis [7], and osteoporotic fractures, [8] a leading cause for disability and mortality in older people [9]. In a systematic review and meta-analysis of six studies involving 96,564 older community-dwelling people, frailty was significantly associated with future risk of fractures [8]. Even if frailty is a well-recognized entity in geriatric medicine, several definitions are available, mainly based on physical performance criteria [10]. For example, using the definition proposed in the Study of Osteoporotic Fractures (i.e., significant weight loss, inability to rise from a chair 5 times without using arms, and reduced energy level), frailty predicted the onset of fractures [11], similarly to the criteria more widely used in geriatric medicine and proposed by Fried et al. in the Cardiovascular Health Study (CHS) [12].

However, no study to date has explored the importance of comprehensive geriatric assessment (CGA) and the multidimensional model in predicting fracture risk [13]. In this context, the multidimensional prognostic index (MPI) [14] is a well-calibrated tool with a relevant discrimination and accuracy for mortality in hospital [15] and in primary care settings [16]. Among all indexes used in geriatrics for clinical decision-making, the MPI is the only tool that allows for the exploration of multiple domains, relating to general health, functional, cognitive, and nutritional status, as well as social aspects, using standardized and extensively validated rating scales [17]. Furthermore, MPI is significantly correlated with several negative outcomes in older people, in particular mortality and (re)hospitalization [14, 15, 18, 19]. Recent literature has reported a significant association between MPI and other conditions, such as poor quality of life [20], cardiovascular disease [21], and depression [22].

However, to the best of our knowledge, no study has explored whether higher MPI values are associated with a higher risk of fractures. Given this background, the present study aimed to investigate the association between MPI scores and incident fractures in a large cohort of North American adults followed up over 8 years, participating to the Osteoarthritis Initiative (OAI).

## Materials and methods

### Data source and subjects

Data from the Osteoarthritis Initiative (OAI) database were used. The participants were included across four clinical sites in the USA (Baltimore, MD; Pittsburgh, PA; Pawtucket, RI; and Columbus, OH) between February 2004 and May 2006. Inclusion criteria were as follows: (1) had knee osteoarthritis (OA) with knee pain for a 30-day period in the past 12 months including all grades of severity or (2) were at high risk of developing knee OA (e.g., overweight/obese [body mass index, BMI  $\geq 25$  kg/m<sup>2</sup>], family history of knee OA) [23]. For the aims of this research, the data were collected at baseline and during the following evaluations over 8 years of follow-up. The presence of fractures in the OAI was recorded, other than the first evaluation, after 1, 2, 3, 4, 6, and 8 years from baseline. All participants provided written informed consent. The OAI study was given full ethics approval by the institutional review board of the OAI Coordinating Center, University of California in San Francisco.

### Calculation of the MPI

Originally, the MPI was built according to eight different scales, i.e., disability in basic and instrumental activities of daily living, using the Katz [24] and Lawton-Brady [25] indexes, respectively, nutritional domain, investigated with the mini-nutritional assessment [26], severity of comorbidities [27], number of drugs taken daily, risk of pressure sores [28], cognitive performance [29], and social aspects. In the OAI, since some of these scales were not available, the MPI was calculated as reported in other studies using the same database [21, 30]. Six domains were assessed by using standardized CGA scales: (1) physical functioning, through the Western Ontario and McMaster Universities Osteoarthritis (WOMAC) Index [31]; (2) physical activity, measured through the Physical Activity Scale for the Elderly scale (PASE) [32]; (3) nutritional aspects, evaluated using body mass index (BMI); (4) comorbidity, assessed by the Charlson Comorbidity Index score [24]; (5) the number of medications used; (6) co-habitation status was reported, categorized as living alone (yes vs. no); (7) the presence of depressive symptoms, using the Center for Epidemiologic Studies-Depression (CES-D) Scale [33]; and (8) quality of life assessed through a specific subscale of the Knee injury Osteoarthritis Outcome Score (KOOS) [34].

This modified MPI, obtained as weighted sum of each domain, ranged from 0.0 (low risk) to 1.0 (highest risk).

MPI was categorized into three statistically different risk groups of fracture risk (low risk 0–0.33, moderate risk 0.34–0.66, and severe risk > 0.66), similar to the original division of this score.

The changes of the MPI during follow-up were evaluated at V03, V06, V08, and V10 since information regarding comorbidity were available only at these evaluations.

### Outcome: fracture assessment

The presence of fractures at baseline and during follow-up was ascertained through self-reported history of fractures [35]. The primary outcome was considered the incidence of any fracture.

### Covariates

Other than age and sex, we identified several potential confounders in the possible relationship between MPI and incident fractures. These included (1) smoking habits, categorized as “previous/current” vs. never; (2) ethnicity, categorized as whites vs. others; (3) educational level, categorized as “degree” vs. others; (4) yearly income, divided as < vs. ≥ \$50,000 or missing data; (5) use of anti-osteoporotic medications at baseline (hormones [including raloxifene], bisphosphonates, teriparatide); (6) number of alcoholic drinks in a typical week; (7) the presence of any fracture at the baseline evaluation; (8) the use of some medications that seem to be associated with a higher risk of fractures, such as SSRI (selective serotonin reuptake inhibitors) [36] and pump inhibitors [37]; (9) vitamin D intake, calculating the sum between that introduced with the diet and with the supplementations; (10) the presence of knee pain evaluated using the highest value of the two WOMAC pain subscale indexes, assessed in both knees [31]; and (11) the job strain, classified as worker or unemployed/retired.

### Statistical analyses

Data on continuous variables were normally distributed according to the Kolmogorov–Smirnov test. Data were presented as means and standard deviation values (SD) for quantitative measures (if normally distributed) and absolute numbers (and percentages) for the discrete variables, by MPI categories ( $\leq 0.33$ ; 0.34–0.66; > 0.66). Levene’s test was used to test the homoscedasticity of variances and, if its assumption was violated, Welch’s ANOVA was used. *p* values for trends were calculated using the Jonckheere–Terpstra test for continuous variables and the Mantel–Haenszel chi-square test for categorical ones.

Cox’s regression analysis was run, taking the MPI at the baseline (in categories or as increase in 0.10 points) as the exposure variable and incident fractures as the outcome

variable. For missing data regarding the changes in MPI during the follow-up period, we used a multiple imputation approach. The data were reported as hazard ratios (HRs) with their 95% confidence intervals (CIs), adjusted for the confounders mentioned before. These confounders were chosen since they were associated, using a Cox regression analysis, with incident fractures, using a *p* value < 0.20 as criterion for entering in the model. Since a large number of covariates were included in our analyses and for avoiding the risk of collinearity, a backward logistic regression model was applied to better select the factors more predictive of incident fractures in our cohort.

Moreover, to test the robustness of our results, we ran several sensitivity analyses (i.e., median age, gender, use of anti-osteoporotic medications, presence of fractures already at the baseline), but the *p* for interaction for MPI by these factors in predicting incident fractures was > 0.05 for all these strata. Since self-reporting of vertebral fractures might not provide an accurate picture of the actual number of fractures, we conducted a further sensitivity analysis, looking only at non-vertebral fractures (i.e., forearm and hip).

All the analyses were performed using the SPSS 21.0 for Windows (SPSS Inc., Chicago, IL). All statistical tests were two-tailed and statistical significance was assumed for a *p* value < 0.05.

## Results

### Sample selection

The OAI dataset included, at baseline evaluation, a total of 4796 individuals. After removing 346 for which data regarding MPI at baseline were not available and 426 lost at follow-up (i.e., information regarding incident fractures were not recorded), 4024 participants were finally included.

### Baseline characteristics

The 4024 participants included were more women (59.0%), with a mean age of 61.0 years ( $\pm 9.1$  years; range: 45–79 years). The mean MPI at baseline was  $0.40 \pm 0.17$  (range: 0.0–1.0).

Table 1 illustrates the characteristics by baseline MPI values. Participants in the higher MPI category (MPI-3, MPI 0.67–1.00) ( $n = 255$ ) were significantly more likely to be female, older, non-white, a smoker, less educated, and less wealthy than those in the lowest category of MPI (< 0.33) ( $n = 1451$ ). People in the MPI-3 group used more frequently PPIs or SSRIs, and reported significant higher values of WOMAC pain than their counterparts with lower values.

**Table 1** Descriptive statistics of participants' characteristics according to their baseline MPI value

		MPI-1 (0.00–0.33) (n = 1451)	MPI-2 (0.34–0.66) (n = 2318)	MPI-3 (0.67–1.00) (n = 255)	p values for trend
Sex, n (%)	F	738 (50.9)	1448 (62.5)	189 (74.1)	<0.0001
	M	713 (49.1)	870 (37.5)	66 (25.9)	
Age, mean (SD)		60.0 (9.1)	61.1 (9.1)	61.5 (8.9)	<0.0001
Number of alcoholic drinks per week, mean (SD)		1.9 (1.5)	1.7 (1.5)	1.3 (1.4)	<0.0001
Yearly income > \$50,000/year, n (%)		1086 (74.8)	1289 (55.6)	69 (27.1)	<0.0001
Whites, n (%)		1284 (88.5)	1827 (78.8)	157 (61.6)	<0.0001
College or higher education, n (%)		550 (37.9)	662 (28.6)	38 (14.9)	<0.0001
Smoking status, n (%)		593 (40.9)	1123 (48.4)	140 (54.9)	<0.0001
Current employer, n (%)		1037 (71.5)	1381 (59.6)	107 (42.0)	<0.0001
Use of SSRI, n (%)		71 (4.9)	219 (9.5)	65 (25.2)	<0.0001
Use of PPI, n (%)		129 (8.9)	326 (14.1)	58 (22.8)	<0.0001
Intake of vitamin D (foods and supplementations)		415 (247)	409 (250)	384 (255)	0.17
WOMAC pain subscale		1.86 (2.64)	3.84 (2.58)	7.07 (4.27)	<0.0001
Use of anti-osteoporotic medications, n (%)		282 (19.4)	579 (25.0)	74 (29.0)	<0.0001
Presence of osteoporotic fractures, n (%)		236 (16.3)	417 (18.1)	61 (23.9)	<0.0001
Living alone, n (%)		1313 (90.5)	1723 (74.3)	99 (38.8)	<0.0001
CES-D, mean (SD)		2.5 (3.0)	1.7 (6.5)	17.5 (9.3)	<0.0001
PASE, mean (SD)		197 (86)	147 (74)	106 (53)	<0.0001
Comorbidity, mean (SD)		0.11 (0.37)	0.32 (0.72)	1.10 (1.33)	<0.0001
Number of drugs, mean (SD)		1.9 (1.9)	3.1 (2.6)	5.4 (3.7)	<0.0001
KOOS – QoL, mean (SD)		77 (19)	63 (21)	47 (21)	<0.0001
BMI, mean (SD)		26.9 (3.9)	29.2 (3.9)	31.8 (5.4)	<0.0001

p values for trends were calculated using the Jonckheere-Terpstra test for continuous variables and the Mantel–Haenszel chi-square test for categorical ones

*BMI*, body mass index; *CES-D*, Center for Epidemiologic Studies-Depression; *KOOS*, Knee Injury and Osteoarthritis Outcome Score; *MPI*, multidimensional prognostic index; *PASE*, Physical Activity Scale for Elderly; *QoL*, quality of life; *SD*, standard deviation; *WOMAC*, Western Ontario and McMaster University; *SSRI*, selective serotonin reuptake inhibitors; *PPI*, pump inhibitors

## Follow-up analyses

During the 8 years of follow-up, 723 participants (= 18.0%) experience a fracture. Among the fractures, for 479 the site was not specified, 164 were reported at the forearm or hip, and 70 were vertebral. Among the 723 people with incident fracture, 244 (16.8%) were in the MPI-1 group, 411 (17.7%) in the MPI-2 group, and 68 (26.7%) in the MPI-3 group. People with incident fractures had a significant higher MPI baseline value than those without this condition ( $0.42 \pm 0.18$  vs.  $0.40 \pm 0.17$ ,  $p = 0.005$ ). Overall, 210 participants (29.4%) with an incident fracture had a diagnosis of fracture already at the baseline. Of them, 57 (27.1%) were classified in the MPI-1, 130 (61.9%) in the MPI-2, and 23 (11.0%) in the MPI-3 group.

Table 2 shows the Cox regression analysis taking MPI as exposure and incident fractures during the 8 years of follow-up as outcome. People in the MPI-3 group had a doubled incidence of fractures than those in the MPI-1 group (25 in MPI-1 and 49 in MPI-3 events per 1000-year) (Fig. 1). After adjusting for several potential confounders at the baseline

evaluation, people in the MPI-3 group (HR = 1.49; 95%CI: 1.11–2.00;  $p = 0.008$ ) had a higher risk of incident fractures (Table 2).

In a sensitivity analysis, after removing 70 incident vertebral fractures and 479 for which the site was not specified, 164 forearm and hip fractures were recorded: 54 participants had a prevalent fracture at baseline, while 55, 93, and 16 were classified in MPI-1, 2, and 3, respectively. Compared to people in MPI-1, people in MPI-3 experienced a higher risk of fracture (HR = 1.69; 95%CI: 1.04–3.03;  $p = 0.03$ ).

## Discussion

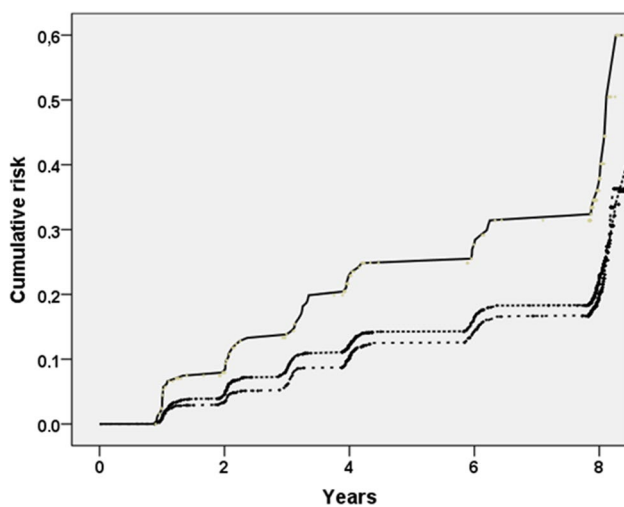
During the 8 years of follow-up, we found that MPI at baseline may predict the onset of fractures in community-dwelling participants affected by knee OA or at high risk for this condition. The incidence of fractures was nearly doubled in people in the MPI-3 group compared to that in the MPI-1 group and these findings remain significant after adjusting our analyses for several potential confounders. The subjects

**Table 2** Association between MPI and incident fractures during 8 years of follow-up

		Fractures (incidence rate, per 1000-year)	Unadjusted HR (95%CI)	HR <sup>1</sup> (95%CI)
MPI ( $\times 0.10$ increase)		-	1.08 (1.03–1.13) ( $p=0.001$ )	1.04 (1.008–1.07) ( $p=0.03$ )
MPI	MPI-1	25 (0.00–0.33) (22–29)	1 [reference]	1 [reference]
	MPI-2	28 (0.34–0.66) (25–31)	1.11 (0.94–1.30) ( $p=0.21$ )	1.01 (0.86–1.19) ( $p=0.88$ )
	MPI-3	49 (0.67–1.00) (38–62)	1.85 (1.41–2.43) ( $p<0.0001$ )	1.49 (1.11–2.00) ( $p=0.008$ )

<sup>1</sup>Hazard ratios are adjusted for age; sex; ethnicity; education; smoking status; monthly income; use of anti-osteoporotic medications (hormones, bisphosphonates, teriparatide); number of alcoholic drinks in a typical week; the presence of any fracture at the baseline evaluation; the use of SSRI (selective serotonin reuptake inhibitors) and/or pump inhibitors; vitamin D intake (diet and the supplementations); the presence of knee pain; and the job strain, classified as worker vs. unemployed/retired

MPI, multidimensional prognostic index; HR, hazard ratio; CI, confidence intervals



**Fig. 1** Cumulative incidence of fractures during the 8 years of follow-up, by MPI categories. The MPI-3 group is represented by the continuous line (upper line), MPI-2 and MPI-1 by dashed lines

with incident fractures had a significantly higher mean MPI value of 0.02 points. While this difference is small, a previous study in hospitalized older people reported that a similar difference in MPI between admission and discharge was able to predict mortality [38].

People having higher MPI values at baseline had a significantly higher presence of common risk factors for fractures than people with lower values of MPI, such as female gender, lower educational level, and higher presence of smoking and prevalent fractures. However, also after adjusting for these and other potential confounders, the association between MPI and incident fractures remains significant. There are several explanations that may justify the present findings. First, it has been reported that frail people might have several cellular (such as deoxyribonucleic acid damage and shorter telomere length) [39] and bio-humoral

alterations (e.g., higher oxidative stress and inflammatory levels) [40] that can increase fracture risk [41]. People with higher MPI values can have a higher risk of falls [30], an independent risk factor for fractures [42].

Other investigations have already reported the importance of frailty in predicting fractures. A seminal paper, published more than 20 years ago, found that SOF and CHS indexes have a similar accuracy in predicting fractures, indicating the importance of detecting frailty in older people [11]. However, CGA may add other important information in older people, such as social aspects and medication history, not considered in the two indexes mentioned before. For example, in one study of 2033 patients followed-up for 1 year and comparing tools commonly used in geriatric medicine for frailty identification, the MPI derived from the CGA had the highest accuracy in predicting mortality, in hospitalized older people [43]. We believe that our findings are of importance as they suggest that CGA is an essential step in osteoporosis management. From years, for example, CGA is integrated with orthopedics in hip fracture management [44]. However, our study further indicates that CGA can be useful in the prevention of future fractures' risk since it identifies people at higher risk of fractures. Our findings further strengthen the concept that frailty is significantly associated with fractures, as already shown in other works diagnosing frailty using physical performance criteria [8].

We can discuss the suitability of MPI in predicting fractures, compared to the most common tools used in this field for predicting these outcomes. For example, the FRAX score is a common tool used in the management of osteoporosis: this tool determines fracture probability in individuals by integrating important individual clinical risk factors, giving more information than BMD alone [45]. Even if it is not possible in the OAI study to compare the accuracy of the FRAX score vs. the MPI in predicting frailty, the first one is specific for the prediction of

fractures, while MPI can be used for predicting mortality and other medical conditions. For example, in the OAI study, we have already reported that the same MPI used for the aims of this work is able to predict the onset of cardiovascular disease and falls [21, 30]. Future research should assess if MPI is able to increase the accuracy in predicting fractures of the FRAX score.

The findings from this study should be interpreted in light of its limitations. First, the OAI study includes only people who already have or are at high risk of knee OA, being overweight or obese. Thus, whether our results can be applied to the general population should be verified in general population studies. Second, fractures were self-reported by the patients and not validated by specialists or medical records. This may lead to an under-representation of fractures [46] that are often asymptomatic. Some studies showed that for clinical fractures the accuracy of self-reported fractures is accurate and similar to radiological records, but probably there is an underestimation of some non-clinical fractures, especially vertebral ones [47, 48]. Furthermore, no data about bone mineral density (BMD) is available and this could introduce another confounding factor into our findings, even if it is difficult to say in which direction. It is widely known, in fact, that BMD is among the most important predictors of bone fractures and it is included in several prognostic scores for predicting fractures [49]. Fourth, since it is a retrospective study, the construction of the MPI was revised using the available data in the dataset and not using the standard definition of this tool. However, how this choice can impact the generalizability of the data is hard to determine.

In conclusion, our data suggest that higher MPI values at baseline might be associated with an increased risk of fractures over 8 years of follow-up, further suggesting the importance of CGA in predicting fractures in older people having knee osteoarthritis. Other longitudinal studies, in general population, are needed to confirm our findings.

**Author contribution** Study concept and design: Pilotto, Veronese, Smith; data analysis: Veronese, Maggi; interpretation of data: Ziguora, Barone, Cella; preparation of manuscript: Dominguez, Veronese, Barbagallo; critical revision: Reginster, Maggi, Rizzoli, Cooper. All the authors approved the final version.

**Funding** The OAI is a public–private partnership comprising five contracts (N01-AR-2–2258; N01-AR-2–2259; N01-AR-2–2260; N01-AR-2–2261; N01-AR-2–2262) funded by the National Institutes of Health, a branch of the Department of Health and Human Services, and conducted by the OAI Study Investigators. Private funding partners include Merck Research Laboratories; Novartis Pharmaceuticals Corporation, GlaxoSmithKline; and Pfizer, Inc. Private sector funding for the OAI is managed by the Foundation for the National Institutes of Health. This manuscript was prepared using an OAI public use data set and does not necessarily reflect the opinions or views of the OAI investigators, the NIH, or the private funding partners.

**Data availability** The data of the OAI are freely available at <https://www.niams.nih.gov/grants-funding/funded-research/osteoarthritis-initiative>.

**Code availability** All analyses were performed using the SPSS 20.0 for Windows (SPSS Inc., Chicago, IL).

## Declarations

**Conflicts of interest** Dr. Rizzoli reports personal fees and has received fees for advisory board or lectures from Abiogen, Amgen, CNIEL, Danone, Echolight, Effryx, EMF, Mithra, Mylan, Nestlé, ObsEva, Radius Health, Rejuvenate, Sandoz, and Theramex; Dr. Reginster reports grants and personal fees from IBSA-GENEVRIER, grants and personal fees from MYLAN, grants and personal fees from RADIUS HEALTH, personal fees from PIERRE FABRE, grants and personal fees from CNIEL, and personal fees from DAIRY RESEARCH COUNCIL (DRC); Professor Cooper has received lecture fees and honoraria from Amgen, Danone, Eli Lilly, GSK, Medtronic, Merck, Nestlé, Novartis, Pfizer, Roche, Servier, Shire, Takeda, and UCB; Dr. Veronese reports personal fees from Mylan, Fidia, and IBSA. These authors reported that these grants and personal fees are outside the submitted work. The other authors have nothing to disclose.

**Open Access** This article is licensed under a Creative Commons Attribution 4.0 International License, which permits use, sharing, adaptation, distribution and reproduction in any medium or format, as long as you give appropriate credit to the original author(s) and the source, provide a link to the Creative Commons licence, and indicate if changes were made. The images or other third party material in this article are included in the article's Creative Commons licence, unless indicated otherwise in a credit line to the material. If material is not included in the article's Creative Commons licence and your intended use is not permitted by statutory regulation or exceeds the permitted use, you will need to obtain permission directly from the copyright holder. To view a copy of this licence, visit <http://creativecommons.org/licenses/by/4.0/>.

## References

- Collard RM, Boter H, Schoevers RA, Oude Voshaar RC (2012) Prevalence of frailty in community-dwelling older persons: a systematic review. *J Am Geriatr Soc* 60:1487–1492
- Gilleard C, Higgs P (2011) Frailty, disability and old age: a reappraisal. *Health* 15:475–490
- Veronese N, Stangherlin V, Mantoan P, Chiavalin M, Tudor F, Pozzobon G (2021) Frailty and risk of mortality and hospitalization in nursing home residents affected by COVID-19. *Geriatric Care* 7:9635
- Kojima G, Iliffe S, Walters K (2018) Frailty index as a predictor of mortality: a systematic review and meta-analysis. *Age Ageing* 47:193–200
- Veronese N, Koyanagi A, Stangherlin V, Mantoan P, Chiavalin M, Tudor F, Pozzobon G, Tessarin M, Pilotto A. (2021) Mortality attributable to COVID-19 in nursing home residents: a retrospective study. *Aging Clin Exp Res*. 33(6):1745–1751. <https://doi.org/10.1007/s40520-021-01855-6>.
- Veronese N, Cereda E, Stubbs B, Solmi M, Luchini C, Manzato E, Sergi G, Manu P, Harris T, Fontana L (2017) Risk of cardiovascular disease morbidity and mortality in frail and pre-frail older adults: results from a meta-analysis and exploratory meta-regression analysis. *Ageing Res Rev* 35:63–73

7. Smith L, Yang L, Forwood S (2019) Associations between sexual activity and weight status: findings from the English Longitudinal Study of Ageing. *14:e0221979*
8. Kojima G (2016) Frailty as a predictor of fractures among community-dwelling older people: a systematic review and meta-analysis. *Bone* 90:116–122
9. Kado DM, Browner WS, Palermo L, Nevitt MC, Genant HK, Cummings SR (1999) Vertebral fractures and mortality in older women: a prospective study. *Arch Intern Med* 159:1215–1220
10. Satake S, Arai H (2020) Chapter 1 Frailty: definition, diagnosis, epidemiology. *Geriatrics & gerontology international* 20:7–13
11. Ensrud KE, Ewing SK, Taylor BC, Fink HA, Cawthon PM, Stone KL, Hillier TA, Cauley JA, Hochberg MC, Rodondi N (2008) Comparison of 2 frailty indexes for prediction of falls, disability, fractures, and death in older women. *Arch Intern Med* 168:382–389
12. Fried LP, Tangen CM, Walston J, Newman AB, Hirsch C, Gottdiener J, Seeman T, Tracy R, Kop WJ, Burke G (2001) Frailty in older adults: evidence for a phenotype. *J Gerontol A Biol Sci Med Sci* 56:M146–M157
13. Pilotto A, Custodero C, Maggi S, Polidori MC, Veronese N, Ferrucci L (2020) A multidimensional approach to frailty in older people. *Ageing Research Reviews* 60:101047
14. Pilotto A, Ferrucci L, Franceschi M et al (2008) Development and validation of a multidimensional prognostic index for one-year mortality from comprehensive geriatric assessment in hospitalized older patients. *Rejuvenation Res* 11:151–161
15. Sancarlo D, D’Onofrio G, Franceschi M, Scarcelli C, Niro V, Addante F, Copetti M, Ferrucci L, Fontana L, Pilotto A (2011) Validation of a modified-multidimensional prognostic index (m-MPI) including the Mini Nutritional Assessment Short-Form (MNA-SF) for the prediction of one-year mortality in hospitalized elderly patients. *J Nutr Health Aging* 15:169–173
16. Angleman SB, Santoni G, Pilotto A, Fratiglioni L, Welmer A-K (2015) Multidimensional prognostic index in association with future mortality and number of hospital days in a population-based sample of older adults: results of the EU funded MPI\_AGE Project. *PLoS ONE* 10:e0133789–e0133789
17. Cruz-Jentoft AJ, Daragjati J, Fratiglioni L, Maggi S, Mangoni AA, Mattace-Raso F, Paccalin M, Polidori MC, Topinkova E, Ferrucci L, Pilotto A (2020) Using the multidimensional prognostic index (MPI) to improve cost-effectiveness of interventions in multimorbid frail older persons: results and final recommendations from the MPI\_AGE European Project. *Aging Clin Exp Res* 32:861–868
18. Pilotto A, Addante F, Ferrucci L, Leandro G, D’Onofrio G, Corritore M, Niro V, Scarcelli C, Dallapiccola B, Franceschi M (2009) The multidimensional prognostic index predicts short- and long-term mortality in hospitalized geriatric patients with pneumonia. *J Gerontol A Biol Sci Med Sci* 64:880–887
19. Volpato S, Bazzano S, Fontana A, Ferrucci L, Pilotto A (2015) Multidimensional prognostic index predicts mortality and length of stay during hospitalization in the older patients: a multicenter prospective study. *J Gerontol A Biol Sci Med Sci* 70:325–331
20. Rarek MP, Meyer AM, Pickert L, Pilotto A, Benzing T, Burst V, Polidori MC (2020) The prognostic signature of health-related quality of life in older patients admitted to the emergency department: a 6-month follow-up study. *Aging Clinical and Experimental Research* 1–9
21. Veronese N, Koyanagi A, Smith L, Musacchio C, Cammalleri L, Barbagallo M, Pilotto A (2021) Multidimensional frailty increases cardiovascular risk in older people: an 8-year longitudinal cohort study in the Osteoarthritis Initiative. *Experimental Gerontology* 147:111265
22. Veronese N, Koyanagi A, Smith L, Solmi M, Senesi B, Cella A, Pilotto A (2020) Relationship between multidimensional prognostic index (MPI) and incident depressive symptoms in older people: findings from the Irish longitudinal study on ageing. *International Journal of Geriatric Psychiatry*
23. Eby GA, Eby KL (2006) Rapid recovery from major depression using magnesium treatment. *Med Hypotheses* 67:362–370
24. Katz JN, Chang LC, Sangha O, Fassel AH, Bates DW (1996) Can comorbidity be measured by questionnaire rather than medical record review? *Med Care* 34:73–84
25. Lawton MP, Brody EM (1969) Assessment of older people: self-maintaining and instrumental activities of daily living. *Gerontologist* 9:179–186
26. Cereda E (2012) Mini nutritional assessment. *Curr Opin Clin Nutr Metab Care* 15:29–41
27. Hudson C, Fortin M, Vanasse A (2005) Cumulative Illness Rating Scale was a reliable and valid index in a family practice context. *J Clin Epidemiol* 58:603–608
28. Bliss MR, McLaren R, Exton-Smith AN (1966) Mattresses for preventing pressure sores in geriatric patients. *Mon Bull Minist Health Public Health Lab Serv* 25:238
29. Pfeiffer E (1975) A short portable mental status questionnaire for the assessment of organic brain deficit in elderly patients. *J Am Geriatr Soc* 23:433–441
30. Veronese N, Siri G, Cella A, Maggi S, Ziguora E, Puntoni M, Smith L, Musacchio C, Barone A, Sabbà C, Vallone F, Pilotto A (2020) The multidimensional prognostic index predicts falls in older people: an 8-year longitudinal cohort study of the Osteoarthritis Initiative. *J Am Med Dir Assoc* 21:669–674
31. Bellamy N, Buchanan WW, Goldsmith CH, Campbell J, Stitt LW (1988) Validation study of WOMAC: a health status instrument for measuring clinically important patient relevant outcomes to antirheumatic drug therapy in patients with osteoarthritis of the hip or knee. *J Rheumatol* 15:1833–1840
32. Washburn RA, McAuley E, Katula J, Mihalko SL, Boileau RA (1999) The physical activity scale for the elderly (PASE): evidence for validity. *J Clin Epidemiol* 52:643–651
33. Lewinsohn PM, Seeley JR, Roberts RE, Allen NB (1997) Center for Epidemiologic Studies Depression Scale (CES-D) as a screening instrument for depression among community-residing older adults. *Psychol Aging* 12:277–287
34. Roos EM, Roos HP, Lohmander LS, Ek Dahl C, Beynon BD (1998) Knee Injury and Osteoarthritis Outcome Score (KOOS)—development of a self-administered outcome measure. *J Orthop Sports Phys Ther* 28:88–96
35. Veronese N, Stubbs B, Solmi M, Noale M, Vaona A, Demurtas J, Maggi S (2017) Dietary magnesium intake and fracture risk: data from a large prospective study. *Br J Nutr* 117:1570–1576
36. Koyanagi A, Veronese N, Soysal P et al (2019) The efficacy and safety of nutrient supplements in the treatment of mental disorders: a meta-review of meta-analyses of randomized controlled trials. *PLoS ONE* 18:308–324
37. Smith L, Grabovac I, Yang L, López-Sánchez GF, Firth J, Pizzol D, McDermott D, Veronese N, Jackson SE (2020) Sexual activity and cognitive decline in older age: a prospective cohort study. *Aging Clin Exp Res* 32:85–91
38. Veronese N, Smith T, Stubbs B, et al. (2019) Frailty as a predictor of adverse outcomes in hospitalized older adults: a systematic review and meta-analysis. *J Am Geriatr Soc* 56:100960
39. Ashar FN, Moes A, Moore AZ, Grove ML, Chaves PH, Coresh J, Newman AB, Matteini AM, Bandeen-Roche K, Boerwinkle E (2015) Association of mitochondrial DNA levels with frailty and all-cause mortality. *J Mol Med* 93:177–186
40. Soysal P, Stubbs B, Lucato P, Luchini C, Solmi M, Peluso R, Sergi G, Isik AT, Manzato E, Maggi S (2016) Inflammation and frailty in the elderly: a systematic review and meta-analysis. *Ageing Res Rev* 31:1–8

41. Jacqmin-Gadda H, Fourrier A, Commenges D, Dartigues J-F (1998) Risk factors for fractures in the elderly. *Epidemiology* 417–423
42. Morrison A, Fan T, Sen SS, Weisenfluh L (2013) Epidemiology of falls and osteoporotic fractures: a systematic review. *Clinico-Economics and outcomes research: CEOR* 5:9
43. Pilotto A, Rengo F, Marchionni N, Sancarlo D, Fontana A, Panza F, Ferrucci L, group F-Ss (2012) Comparing the prognostic accuracy for all-cause mortality of frailty instruments: a multicentre 1-year follow-up in hospitalized older patients. *PloS one* 7:e29090
44. De Rui M, Veronese N, Manzato E, Sergi G (2013) Role of comprehensive geriatric assessment in the management of osteoporotic hip fracture in the elderly: an overview. *Disabil Rehabil* 35:758–765
45. McCloskey EV, Harvey NC, Johansson H, Kanis JA (2016) FRAX updates 2016. *Curr Opin Rheumatol* 28:433–441
46. Wu S-C, Li C, Ke D (2000) The agreement between self-reporting and clinical diagnosis for selected medical conditions among the elderly in Taiwan. *Public Health* 114:137–142
47. Øyen J, Torstveit MK, Sundgot-Borgen J (2009) Self-reported versus diagnosed stress fractures in Norwegian female elite athletes. *J Sports Sci Med* 8:130
48. Ivers RQ, Cumming RG, Mitchell P, Peduto AJ (2002) The accuracy of self-reported fractures in older people. *J Clin Epidemiol* 55:452–457
49. Kanis J, Harvey N, McCloskey E, Bruyère O, Veronese N, Lorentzon M, Cooper C, Rizzoli R, Adib G, Al-Daghri N (2020) Algorithm for the management of patients at low, high and very high risk of osteoporotic fractures. *Osteoporos Int* 31:1–12

**Publisher's Note** Springer Nature remains neutral with regard to jurisdictional claims in published maps and institutional affiliations.