

Imaging the adult with congenital heart disease: a multimodality imaging approach—position paper from the EACVI

Giovanni Di Salvo^{1*}, Owen Miller^{2†}, Sonya Babu Narayan^{1†}, Wei Li¹, Werner Budts³, Emanuela R. Valsangiacomo Buechel⁴, Alessandra Frigiola⁵, Annemien E. van den Bosch⁶, Beatrice Bonello⁷, Luc Mertens⁸, Tarique Hussain^{9,10}, Victoria Parish¹¹, Gilbert Habib¹², Thor Edvardsen¹³, Tal Geva¹⁴, Helmut Baumgartner¹⁵, and Michael A. Gatzoulis¹

Reviewers: This document was reviewed by members of the 2016–2018 EACVI Scientific Documents Committee: Victoria Delgado, Kristina H. Haugaa, Patrizio Lancellotti, Frank Flachskampf, Nuno Cardim, Bernhard Gerber, Pier Giorgio Masci, Erwan Donal, Alessia Gimelli, Denisa Muraru, and Bernard Cosyns.

¹Department of Adult Congenital Heart Disease, National Heart and Lung Institute, Imperial College London, Royal Brompton Hospital, Sydney Street, London SW3 6NP, UK; ²Department of Congenital Heart Disease, Evelina London Children's Hospital, Guy's and St. Thomas' NHS Foundation Trust, Westminster Bridge Road, London SE1 7EH, UK; ³Department Cardiovascular Sciences (KU Leuven), Congenital and Structural Cardiology (CSC UZ Leuven), Leuven, Belgium; ⁴Pediatric Heart Center, University Children's Hospital Zurich, Steinwiesstrasse 75, 8032 Zurich, Switzerland; ⁵Adult Congenital Heart Disease, Guy's and St Thomas' Hospital, Westminster Bridge Road, London SE1 7EH, UK; ⁶Department of Cardiology, Erasmus Medical Center, Postbus 2040, 3000 CA Rotterdam, The Netherlands; ⁷Department of Paediatric Cardiology, Great Ormond Street Hospital, London, UK; ⁸Division of Cardiology, Labatt Family Heart Centre, Hospital for Sick Children and University of Toronto, SickKids, 555 University Avenue Toronto, Ontario, Canada; ⁹Division of Imaging Sciences and Biomedical Engineering, King's College London, London, UK; ¹⁰Departments of Paediatrics, University of Texas, Southwestern Medical Center, Dallas, TX, USA; ¹¹Cardiac Department, Eastern Road, Brighton, East Sussex, BN2 5BE, UK; ¹²APHM, La Timone Hospital, Cardiology Department, Boulevard Jean Moulin, 13005 Marseille, France; ¹³Department of Cardiology, Sognsvannsveien 20, 0372 Oslo, Norway; ¹⁴Department of Cardiology, 300 Longwood Avenue, Farley, Boston, 02115 Massachusetts, USA; and ¹⁵Albert-Schweitzer Str. 33, 48149 Münster, Germany

Received 24 June 2018; editorial decision 27 June 2018; accepted 28 June 2018; online publish-ahead-of-print 6 August 2018

Advances in the diagnosis and management of congenital heart disease have led to a marked improvement in the survival of adult with congenital heart disease (ACHD) patients. However, ACHD patients are a heterogeneous population, with a large spectrum of anatomic substrates even within specific lesions. In addition, the nature of previous surgery and other intervention is highly variable rendering each patient unique and residual anatomic and haemodynamic abnormalities are very common. As the ACHD population continues to age, acquired heart disease will also require cardiac imaging assessment. It is increasingly recognized in ACHD community that the diagnostic utility of a multimodality cardiovascular approach is greater than the sum of individual tests. In ACHD patients, diagnostic information can be obtained using a variety of diagnostic tools. The aims of this document are to describe the role of each diagnostic modality in the care of ACHD patients and to provide guidelines for a multimodality approach. The goal should be to provide the most appropriate and cost-effective diagnostic pathway for each individual ACHD patient.

Keywords ACHD • multimodality imaging • echocardiography • cardiovascular magnetic resonance imaging • cardiac computed tomography

Introduction

The concept of multimodality imaging in congenital heart disease (CHD) has recently gained traction within the congenital imaging

community. With the increasing realization that the diagnostic utility of a multimodality cardiovascular approach is greater than the sum of individual tests, it can be expected that the integration of this concept into clinical practice will accelerate in the next decade.^{1–4} The core

* Corresponding author. Tel: 004402073518731; Fax: 004402073518758. E-mail: g.disalvo@rbht.nhs.uk

† These authors contributed equally to this work.

Published on behalf of the European Society of Cardiology. All rights reserved. © The Author(s) 2018. For permissions, please email: journals.permissions@oup.com.

of the concept is synthesis and integration of image data from two or more modalities by imagers who are clinically expert in the involved modalities. However, this integration is expected to be further enhanced by technologic advances in individual modalities (e.g. higher spatial and temporal resolutions, improved signal-to-noise ratio), better integration of image data from different sources (e.g. fusion imaging), training of a new generation of imagers with expertise in several key modalities, and employing a patient-centred individualized approach towards optimal utilization of potentially expensive technology. Recommendations for imaging approaches to surveillance of adult congenital heart disease (ACHD) patients highlight the potential of a multimodality approach to strike an optimal balance between utilization of tests and diagnostic yield.¹⁻⁷

Imaging in ACHD must be preceded by a thorough clinical evaluation including the patient's history, review of previous surgical procedure(s) or other intervention(s) and physical examination. Knowledge and understanding of congenital cardiac anatomy, terminology, pathophysiology, and surgical and/or interventional procedures are fundamental to optimal ACHD imaging and interpretation. Access to medical records, including operative reports is of the utmost importance. Data obtained by the different imaging modalities must be integrated with functional assessment, particularly cardiopulmonary exercise demonstrated strong prognostic information in ACHD patients.⁸

The choice of imaging modalities should be made by determining the best combination of tests with the least risk to the patient given a specific clinical question. In some cases, it should be influenced by the age of the patient. The best tests for an individual patient will vary, and be influenced by the availability of both advanced imaging technology and skilled personnel available locally.

Echocardiography remains the first imaging modality to use and in many instances will provide all information required for patient management. If echocardiography is of poor quality and cannot therefore provide sufficient information, cardiac magnetic resonance (CMR) will in general be the next choice for further evaluation. CMR is also being increasingly used when echocardiography is of good quality but provides borderline or ambiguous measurements of parameters that are essential for the decision-making (catheter intervention, cardiac surgery) such as right ventricular (RV) volumes and ejection fraction (EF) or quantification of valvular regurgitation and shunt lesions.

There are specific questions where CMR and/or computed tomography (CT) are superior to echocardiography or are the only modalities to provide the answers. If both are suitable, CMR is preferred over CT to avoid iodinated contrast with potential kidney toxicity and radiation given the potential carcinogenic effect in ACHD patients attributable to the cumulative use of ionizing radiation.^{9,10} In case of significant metallic artefacts or if particularly high resolution is desirable, for example, for coronary anomalies and arteriovenous malformations, then gated cardiac CT may be preferred. Examples of when CMR/CT imaging may be helpful are given in *Table 1*. Cardiac catheterization is mainly reserved for assessment of precise haemodynamics (e.g. pulmonary vascular resistance), evaluation of coronary arteries and extracardiac vessels such as aortopulmonary collaterals particularly when an intervention is contemplated, or when non-invasive data remain inconclusive. Nuclear imaging is generally limited to selected patients only, for example, for myocardial stress perfusion

Table 1 CMR/CT may be useful to answer the following

- Quantification of RV size and function (CMR)
- Evaluation of the RV outflow tract and RV-PA conduits (CMR and CT)
- Quantification of pulmonary regurgitation (CMR)
- Evaluation of pulmonary arteries and the aorta (CMR and CT)
- Evaluation of systemic and pulmonary veins (CMR and CT)
- Collaterals and arteriovenous malformations (CT superior to CMR)
- Coronary anomalies and coronary artery disease (CT superior to CMR)
- Quantification of myocardial mass (CMR and CT)
- Intra- and extra-cardiac masses (CMR and CT)
- Myocardial fibrosis/scar (CMR)
- Tissue characterization (fibrosis, fat, iron etc.) (CMR)

imaging or differential pulmonary blood flow quantification when CMR is not available.²

Thus, the choice of imaging modality in clinical practice is based on the different strengths and limitations of the modalities, their availability, and on economic and safety (radiation and biological) aspects. Because of the lack of randomized and prospective data, contemporary recommendations are informed by expert consensus rather than evidence-based.¹⁻⁵

Echocardiography

Echocardiography, with its wide range of approaches (transthoracic, transoesophageal, 3D, contrast, and stress), is generally considered the first-line modality for cardiovascular imaging in ACHD.²⁻⁵ It provides comprehensive assessment of anatomy and physiology and contributes significantly to clinical management many years after surgical or catheter interventional procedures. It is recommended to develop lesion-specific imaging protocols for follow-up studies, to ensure the critical information for clinical decision-making is included in the imaging study, and for longitudinal data comparison. For example, transthoracic echocardiography (TTE) in repaired tetralogy of Fallot (rTOF) patients, may include a more detailed assessment of RV size and function while a patient after repair of coarctation of the aorta may require a more detailed assessment of left ventricular (LV) size and function.

When performing and interpreting echocardiographic studies in ACHD, it is important to systematically assess cardiac anatomy, morphology, function, and haemodynamic relevance of all malformations. Sequential segmental analysis should be used for all ACHD cases to ensure that important pathology is not missed. Intracardiac shunt lesions can be demonstrated by 2D or 3D echocardiography complemented with colour and spectral Doppler measurements for full pathophysiological evaluation (size, direction, and velocities across defect).

3D echocardiography provides en-face visualizations of cardiac valves that are easily interpreted by surgeons to plan valve repair surgery. In addition, 3D echocardiography planimetry are useful for

assessing severity of valve stenosis in presence of multiple haemodynamic abnormalities, sizing valve prosthesis, and live dynamic geometric guidance during the interventional procedures [3D transoesophageal echocardiography (TOE)].¹¹

Measurements of LV volumes and EF by 3D echocardiography are preferred over 2D calculations where echocardiographic windows allow.⁹ In patients with compressed LV due to severe RV dilatation [such as rTOF with severe pulmonary regurgitation, Ebstein's anomaly with severe tricuspid regurgitation (TR) or pulmonary hypertension], non-geometric indices of longitudinal LV velocity measured by Tissue Doppler or strain and strain rate measured using speckle tracking are associated with outcome, in particular global longitudinal strain (GLS).¹² It is important to note that criteria used in the general adult cardiac population for the assessment of diastolic function, such as E/e' ratio, may not be accurate in all congenital patients as reduced e' can be the result of localized surgical scarring at the septum or LV free wall rather than representing impaired global LV diastolic function.¹³

Echocardiographic assessment of RV size and function is more difficult, in part because of the shape of the RV. Indirect measures of RV function such as fractional area change (FAC) and tricuspid annular plane systolic excursion (TAPSE) from a four-chamber view are widely used and have shown prognostic value. Tissue Doppler imaging of myocardial velocities and speckle tracking echocardiography (STE) for myocardial deformation have both been applied in ACHD for regional and global ventricular myocardial deformation assessment,^{14–18} but their clinical application to the RV in ACHD remains limited to specialized centres. In the presence of good windows, 3D evaluation of RV volumes and RV EF is recommended in laboratories with experience in 3D.^{11,12,17}

Suboptimal penetration of ultrasound poses the chief limitation of TTE, especially in adults after cardiovascular surgery. Standard views might be inadequate and atypical views are often required. In patients with limited echocardiographic windows, additional imaging techniques will be required and selected according to the clinical question. Contrast echocardiography is of help for visualization of intracardiac shunt, volume quantification, cardiac masses, and for myocardial perfusion.¹⁹ For further assessment of intracardiac anatomy and valve function, TOE is the next logical diagnostic imaging technique. TOE plays a crucial role in the perioperative assessment of patients with CHD and post-bypass TOE has become routine in most surgical centres treating patients with CHD.²⁰ TOE is also used for monitoring and guiding interventional cardiac catheterization, including device closure of septal defects.²⁰ Intracardiac echocardiography (ICE) has been used in certain centres as an alternative for TOE for guidance of specific interventions in recent years.²¹

Newly developed real-time fusion of dynamic synchronized live echocardiography and fluoroscopy is an emerging technique to facilitate ACHD percutaneous intervention procedures and reduce dosage of radiation and contrast.²² Such new echocardiographic techniques will play an increasing role.

Key points

- Echocardiography is the first line imaging modality in the assessment and follow-up of ACHD patients.

- 2D speckle tracking-derived LV GLS appears to be feasible and reproducible for clinical use and can be included in the clinical follow-up.
- 2D speckle tracking-derived strain of the RV free wall, appears to be feasible and reproducible.
- Standard approaches to diastolic assessment are not always applicable in all ACHD patients.
- TAPSE and FAC for RV function are the suggested echocardiographic parameters for regular clinical follow-up of ACHD patients.
- 3D echocardiography, when feasible, is recommended to assess ventricular volumes, EF, valvular morphology, and better understanding of intracardiac anatomy.
- For the follow-up of RV size and function, when CMR is not feasible, not available or contraindicated, in centres with experience, 3D echo is recommended.
- Dedicated protocols for each specific lesion are strongly recommended.
- Echocardiography studies in ACHD should be supervised and reported by appropriately trained ACHD specialists.

CMR imaging

CMR imaging is already routine and well established in the diagnosis and serial follow-up of ACHD patients.^{1–5,23,24} CMR enables life-long accurate volumetric, functional and flow analysis, which is crucial for optimal management and timing of interventions during follow-up. CMR is accurate with low intra- and inter-observer variability,²⁵ and has become the gold standard for volume and flow assessments in ACHD. Unlike some other imaging modalities, CMR image quality is not affected by body habitus, there is no need for geometric assumptions and it is radiation free.

Ventricular volumes are obtained from manual segmentation of end-systolic and end-diastolic cine images, generally acquired from a short axis stack but a transverse stack can also be used. Volumes from axial and short axis stacks are not equal, and axial approach may allow more accurate volume measurements.²⁶ Flows are assessed using phase contrast velocity encoded imaging. The main advantage of CMR-based flow analysis results from the possibility to interrogate the area of interest in any plane, which is of particular value in patients with RV to pulmonary artery (PA) conduits, which are often too anterior to be assessed with echocardiography. Flow can be assessed perpendicular (through plane) or parallel (in plane) to the flow jet, the latter being particularly useful in the presence of multiple level stenoses where information on the area of maximum flow acceleration is needed. CMR allows accurate quantification of valve regurgitation and is considered gold standard for pulmonary regurgitation assessment. Volumes and flow analysis allows non-invasive measurements of intra- and extra-cardiac shunts [ventricular septal defect (VSD), atrial septal defect (ASD), patent ductus arteriosus, baffle leak after Mustard and Senning procedure, etc.], which is of significant value for patient management. In patients with complex single ventricle circulations such as after Fontan palliation, flow analysis provides accurate non-invasive haemodynamic data, including collateral flow and shunt through a fenestration if present. 3D information

obtained from MR angiography and 3D SSFP images allow accurate assessment of cardiac structures and their anatomic relations. This is particularly useful when planning interventions such as percutaneous pulmonary valve implantation, correction of partial anomalous pulmonary venous drainage, or stenting of aortic coarctation. The obtained images can be used to produce 3D-printed heart models, which are becoming an established technique to plan selected surgical and catheter procedures.

In addition, CMR with late gadolinium enhancement (LGE) is the reference standard for the assessment of focal myocardial fibrosis, while T1 mapping allows quantification of interstitial fibrosis.

Presence of metallic implants or a pacemaker may represent a contra-indication to CMR and careful safety check should be performed prior and after scanning. Guidelines already exist regarding the use of CMR in patients with conventional pacemakers and AICD devices^{27,28}; increasingly 'CMR-compatible' devices are being selected for ACHD patients. Occasionally, severe claustrophobia makes it impossible for an ACHD patient to undergo routine awake CMR, so sedation can be considered if CMR imaging would change the clinical management. Finally, CMR can safely be performed during pregnancy although it is general recommendation to avoid scanning during the first trimester and this should be included in informed consent process.^{28–30} Expert centres also advise against breast feeding for 24 h after receiving gadolinium contrast.

In summary, CMR is an important tool in the multimodality assessment of ACHD patients. It provides a detailed structural diagnosis, an accurate volumetric and flow analysis, and as radiation free is safely used for longitudinal follow-up.

Key points

- A baseline CMR is recommended for many patients at time of transition from Paediatric to ACHD programmes.
- CMR is the gold standard for ventricular volumes, EF, flow quantification, and the assessment of extracardiac anatomy.
- CMR frequency should be determined by the underlying defect and clinical status of the individual patient. Intervals between scans depend on the risk profile, findings at the first CMR study, and the expected rate of change. Intervals of 3 years or more are appropriate in most cases, but earlier re-study may be prompted by the onset or progression of symptoms, or the presence of a lesion liable to rapid progression.
- Additionally, CMR is recommended in the presence of clinical deterioration, non-diagnostic echo findings, and prior to surgical or transcatheter intervention.
- CMR studies in ACHD should be supervised and reported by appropriately trained ACHD specialists.

Cardiac CT

In recent years, the use of Multidetector CT (MDCT) in ACHD has increased exponentially. This is because modern MDCT can cover large anatomic volumes with excellent spatial resolution allowing detailed evaluation of small blood vessels such as coronary arteries,

pulmonary veins, collaterals, arteriovenous malformations and distal PA branches.^{31–33} Acquisition time is rapid (<2 min) allowing patients who are unable to lie still or supine for long periods to be imaged. Pulmonary parenchymal imaging is also provided which is highly relevant for patients with pulmonary hypertension. CT is a true 3D technique, allowing more accurate measurement in all planes of dimensions and integration with cathlab data for procedural planning. Furthermore, CT may complement assessment of mechanical heart valve dysfunction, aortic or pulmonary dissection and allows 3D visualization of abscess formation in endocarditis, and is even practical in the critically ill patient. However, CT exposes the patient to ionizing radiation and iodinated contrast agents and does not provide information on haemodynamics, flow rate, or velocity. CT can be used to acquire ventricular volumes and function but with lower temporal resolution than 2D/3D echocardiography or CMR and at the expense of additional radiation exposure.³⁴ CT volumes correlate with CMR and newer generation CT showed excellent accuracy for LV volumes.³⁵ However, CT is clearly unattractive for serial measurements because of the cumulative radiation dose. For preoperative screening in low risk patients, cardiac CT for coronary artery imaging has a useful role. Specific specialist knowledge of ACHD is required for appropriate planning and interpretation of cardiac CT.

Key points

- CT is superior to CMR in the setting of critically ill, or claustrophobic patients, when the length of a CMR acquisition may not be tolerable or practical.
- Cardiac CT allows concurrent evaluation of lung parenchyma or airways.
- CT is indicated when evaluation of calcification is needed (e.g. within vessels and surgical conduits prior to intervention) or if detailed evaluation for coronary stenosis is sought.
- CT can be considered in the presence of CMR non-compatible implants (e.g. pacing leads, non-MR compatible pacemaker/defibrillator) and in the setting of poor CMR image quality due to metallic artefact.

Chest X-ray

The chest X-ray should be used as part of the periodic follow-up of ACHD patients. Chest X-ray has a small radiation dose (dose from two views is limited to 0.1 mSv). Chest X-ray provides useful diagnostic information on heart and vessel size and shape, pulmonary vasculature, and lungs. Furthermore, cardio-thoracic ratio relates to functional class and predicts survival in ACHD.³⁶

Cardiac catheterization

The use of catheterization has evolved in the past few decades away from solely obtaining diagnostic information towards its main contemporary use for therapeutic interventions in ACHD patients. However, fluoroscopic and angiographic imaging may still have a place where more advanced imaging techniques do not provide sufficiently detailed anatomical information. Angiographic coronary

Table 2 Cardiac imaging goals in selected adult congenital heart diseases

Specific lesions	Echocardiography	CMR	CT	Cardiac cath and angiography
Repaired tetralogy of Fallot	RV size and function, RVOT, branch PAs, residual intracardiac shunts, RV pressure, Tricuspid regurgitation, pulmonary regurgitation, LV size and function, aortic root size, proximal ascending aorta	RV volumes and RV EF, regional RV wall motion, RVOT aneurysms, branch PA anatomy and flow, accurate QP: QS, pulmonary regurgitant fraction, LV size and function, aortic root and ascending aortic size, aortic-to-PA collaterals, origin and proximal course of coronary arteries	In selected cases when echocardiography does not answer the clinical question and CMR is contraindicated or limited by artefacts (stent, leads), Ventricular volumes and EF, detailed branch PA anatomy, aortic root and ascending aortic size, aortic-to-PA collaterals, detailed coronary artery visualization, RV to PA conduit calcification and relation to coronary arteries	When haemodynamic data are important for management, in selected cases when echocardiography is inconclusive and CMR is contraindicated or where cardiac CT is insufficient to exclude coronary artery disease
Transposition of the great arteries after atrial switch procedure	Systemic RV size and function, systemic and pulmonary venous pathways (baffle leaks or obstructions), residual intracardiac shunts, tricuspid regurgitation, LV size and function, LVOT obstruction (pulmonary stenosis)	Systemic RV volume and RV EF, systemic and pulmonary venous pathways (baffle leaks or obstructions), residual intracardiac shunts, tricuspid regurgitant fraction, LV size and function, LVOT obstruction (pulmonary stenosis), origins and proximal courses of the coronary arteries	In selected cases where echo does not answer the clinical question and CMR is contraindicated, Ventricular volumes and EF, systemic and pulmonary venous pathways (baffle leaks or obstructions), residual intracardiac shunts, LVOT obstruction (pulmonary stenosis), origins and proximal courses of the coronary arteries	When intra-cavity pressures, pressure gradients are required for further medical or surgical decision-making, combined interventional procedures are needed
Transposition of the great arteries after arterial switch procedure	LV size and function, residual intracardiac shunts, main PA and proximal branch PA stenosis, neo-aortic root dilation and regurgitation, myocardial stress perfusion	LV volumes and EF, residual intracardiac shunts, main PA and proximal branch PA stenosis, neo-aortic root dilation and regurgitation, origin and proximal course of coronary arteries, myocardial stress perfusion	In selected cases, LV volumes and EF, residual intracardiac shunts, Main PA and proximal branch PA stenosis, neo-aortic root dilation and regurgitation, detailed coronary arteries anatomy	In case of interventional procedure (PAs balloon angioplasty or stent) or when coronary artery stenosis is strongly suspected clinically and by non-invasive imaging
After Rastelli operation	Evaluation RV to PA conduit, main PA and branch PAs, RV size and function, tricuspid regurgitation, RV pressure, residual intracardiac shunt	Evaluation RV to PA conduit, main PA and branch PAS flow quantification, RV volumes and EF, tricuspid regurgitation, multilevel obstruction to identify the most relevant	In selected cases where echo does not answer the clinical question and CMR is contraindicated or limited, RV to PA conduit calcification and proximity to coronary arteries	Before redo surgery or percutaneous pulmonary valve implantation to provide intra-cavity pressures, end-diastolic ventricular pressures, pressure gradients and coronary and pulmonary angiography
Atrioventricular and ventriculo-arterial discordance (unoperated)	Systemic RV size and function, residual intracardiac shunts, tricuspid valve morphology and regurgitation, Aortic regurgitation, LV (subpulmonary) size and function, LVOT obstruction (pulmonary stenosis).	Systemic RV volumes and EF, residual intracardiac shunts, tricuspid valve morphology and regurgitation, aortic regurgitation, LV (subpulmonary) volumes and EF, LVOT obstruction (pulmonary stenosis)	In selected cases, Ventricular volumes and EF, Residual intracardiac shunts, tricuspid valve morphology and regurgitation, aortic regurgitation, LVOT obstruction (pulmonary stenosis)	Assessment of end-diastolic ventricular pressure and pulmonary vascular resistance in preoperative patients or in cases where full non-invasive evaluation is inconclusive
Aortic coarctation	Aortic valve morphology, function, pressure gradient,	Ascending, transverse and descending thoracic aortic	Particularly useful in the case of prior stents, Ascending, transverse, and	Interventional procedures

Continued

Table 2 Continued

Specific lesions	Echocardiography	CMR	CT	Cardiac cath and angiography
	subaortic anatomy (membrane) and pressure gradient, aortic root, ascending aortic and aortic arch anatomy, LV size, function, diastolic function, and wall thickness	pathology (dilation, multi-level stenosis and aneurysm), Aortic valve morphology, LV volumes, EF, and mass, Aortic collaterals	descending thoracic aortic pathology (dilation, aneurysm), aortic collaterals	
Single ventricle	Ventricular size and function, atrioventricular valve regurgitation, Fontan pathway patency, branch PA visualization, LVOT obstruction, aortic regurgitation	Ventricular volumes and EF, atrioventricular valve regurgitant fraction, Fontan pathway patency, Branch PA calibre and flow quantification, LVOT obstruction, aortic regurgitation fraction, pulmonary venous compression, aortic-to-pulmonary and systemic-to-pulmonary venous collaterals	In select cases, ventricular volumes and EF, Fontan pathway patency, branch PA calibre, LVOT obstruction, pulmonary venous compression	Haemodynamic data regarding severity of stenosis, PA pressure, pulmonary vascular resistance and to further delineate thoracic vascular anatomy, particularly of the pulmonary vascular bed and collateral vessels, interventional procedures

Modified from Babu-Narayan *et al.*²

LV, left ventricle; RV, right ventricle; EF, ejection fraction; LVOT, left ventricle outflow tract; PA: pulmonary artery.

evaluation and baffle leak detection are examples in which non-invasive imaging does not give always-sufficient information. Heart catheterization is still the gold standard for intra-cavity and intravascular pressure measurements. Moreover, right heart catheterization is the only way to confirm pulmonary arterial hypertension and pulmonary vascular disease.⁷ Direct peak-to-peak pressure differences can easily be obtained by catheterization and are less sensitive for measurement errors when compared with non-invasive methods. Cardiac output relies on thermo-dilution or Fick methodology.

In complex cases, optimal calculation of pulmonary vascular resistance is derived from a hybrid approach with CMR providing flow data and simultaneous catheterization providing pressure data. Such combined CMR-Catheter procedures are being used to provide enhanced diagnostic data in complex ACHD patients who may often require multiple cardiac catheterizations.^{37–39} This approach to diagnosis as well as treatment, although nowadays limited to few centres, offers the advantages of a radiation-free or minimal radiation examination, increased soft tissue contrast, theoretically unlimited imaging planes for catheter guidance. Hybrid measurements provide a more accurate and comprehensive haemodynamic assessment than other traditional techniques.^{37–39} While hybrid CMR-catheterization laboratories are well placed to do this simultaneously, ACHD patients can still benefit from separate but contemporaneous flow (CMR) and pressure (catheter) acquisitions from adjacent facilities.

Balloon dilatation and/or stenting of vessels, vessel occlusion, balloon dilatation and/or implantation of valves, and other structural interventions have become increasingly common practice in ACHD and peri-procedure imaging such as TOE, ICE, and CT may be

required to support the interventionalist. CMR-guided cardiac catheterization without fluoroscopy is not yet ready to be widely used in the clinical setting,³⁷ because of the increased overall cost, greater operational complexity, reduced temporal and spatial resolution, restricted access to the patient, limited patient monitoring, and ambient noise during the scan.^{37–39}

Key points

- Cardiac catheterization is recommended for cardiac chamber intra-cavity and vascular pressure measurements.
- Cardiac catheterization is the gold standard for the diagnosis of pulmonary vascular disease.
- Cardiac catheterization is mainly employed when a percutaneous therapeutic procedure is contemplated.

3D printing

Cardiac 3D printing produces a replica of the patient's heart anatomy and is a powerful application that offers several advantages to patient care particularly in the ACHD population. In ACHD patients with complex cardiac anatomy and multiple surgeries, 3D models allow precise understanding of the patient's anatomy and physiology enabling detailed pre-surgical planning, and are useful tools for patient counselling, trainee education, and simulation.^{40,41}

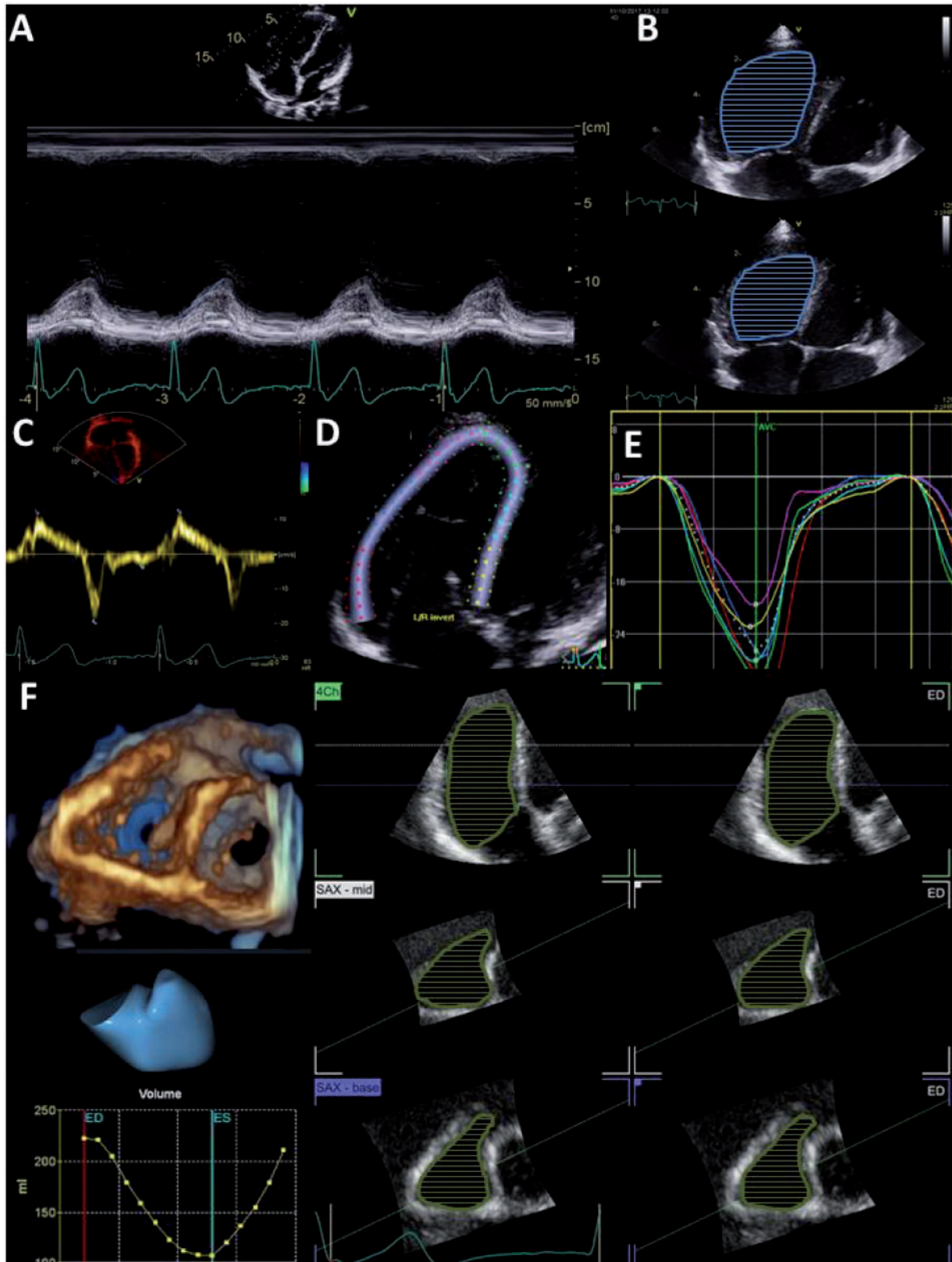


Figure 1 Echocardiographic protocol to study right ventricular function in a patient after tetralogy of Fallot repair. (A) TAPSE obtained by M-mode from a RV-modified view is shown. (B) Calculation of FAC from a right ventricular focused apical four chamber view. (C) Tissue Doppler obtained from the tricuspid valve annulus. (D) Right ventricle global longitudinal strain obtained combining right ventricle free wall and the interventricular septum. (E) Strain curves expressing regional myocardial deformation from each studied segment, while the dotted line express the average right ventricular strain curve. (F) 3D echocardiography for the assessment of right ventricular volumes, ejection fraction.

Selected specific lesions

Repaired tetralogy of Fallot

Surgical rTOF includes closure of a VSD, relief of RV outflow (RVOT) tract stenosis using either a pulmonary-valve sparing technique or a more extensive RVOT reconstruction incorporating a transannular patch (Table 2). In case of branch pulmonary stenosis, arterioplasty of the PA branches may also be required. The main goals of imaging in the follow-up of rTOF patients are to identify residual or postoperative lesions, quantify their haemodynamic importance, study the effect on RV and LV function and inform clinical decision-making regarding timing and method of reintervention. Typical residual lesions include pulmonary valve regurgitation (common in contemporary ACHD patients), residual RVOT obstruction (less common in the contemporary adult population unless a conduit was implanted as part of the repair), pulmonary branch stenosis, residual VSD, or ASD. Secondary lesions include progressive RV dilatation and dysfunction, TR, aortic root dilatation, and aortic insufficiency. Progressive RV dilatation and development of RV dysfunction secondary to pulmonary regurgitation is the most commonly observed problem in this patient group. Quantification of RV size and function is considered fundamental in decision-making for timing of pulmonary valve replacement.^{1–5} LV dysfunction must also be considered especially in older population (age >40 years).^{42,43}

Echocardiography

Echocardiography with a specific protocol focusing on the relevant post-operative and residual lesions and their haemodynamic implications is strongly recommended as for all ACHD lesions. Echocardiographic evaluation should include the assessment of residual RVOT obstruction and proximal PA branches. RVOT views from parasternal short- and long axis are the standard echocardiographic views for assessing the RVOT.^{5,44} Pulsed and continuous wave Doppler are used for the assessment of gradients. Peak RVOT gradient >64 mmHg is considered as severe but overestimation of the peak gradient is possible in the context of severe pulmonary valve regurgitation and long-segment stenosis (typically conduit stenosis).⁵ Assessment of PA branch stenosis may be more challenging in adults related to limited acoustic windows and a combination of parasternal and suprasternal windows may be required. The assessment of severity of pulmonary regurgitation is based on parasternal short- and long-axis views and includes assessment of jet width at valve level, diastolic flow reversal from the main and distal PA branches and pulsed Doppler (pressure half-time <100 ms). Generally, echocardiography is reliable in patients with haemodynamically significant pulmonary regurgitation.^{5,44,45}

While the echocardiographic assessment of LV size has been standardized, there is more controversy on the techniques used for the assessment of RV size and function (Figure 1). We recommend including quantitative measures of RV size and function for routine follow-up. For RV dimensions, we recommend using RV 2D measurements from different RV views (short-axis, long-axis, and apical four-chamber views) and measuring RV end-diastolic area from the apical four-chamber view.¹² For RV functional assessment, FAC from the RV-focused view, TAPSE or tissue Doppler traces in the tricuspid annulus should be combined. RV volumetry based on 3D

echocardiography and RV strain measurements could be included, as emerging techniques in the echo evaluation of RV function.^{12,46,47} 3D echocardiographically obtained RV volumes, although well correlated, are typically underestimated when compared with CMR volumes. In laboratories with experience in 3D echocardiography, 3D echo RV volumes should be used in the follow-up of the patients but should not be used interchangeably with CMR.^{47,48} Assessment of LV function is an essential part of the assessment as RV dysfunction is associated with LV dysfunction. LV measurements by 3D echocardiography are accurate and reproducible and should be used when available and feasible.¹² 2D STE-derived GLS appears to be reproducible and feasible for clinical use and myocardial deformation parameters offer incremental prognostic value in patients after TOF repair.^{44,49,50}

RV diastolic function can also be assessed by Doppler echocardiography. Anterograde flow in the main PA during atrial contraction throughout the respiratory cycle,^{51,52} is considered a sign of RV restrictive physiology. Restrictive RV filling pattern and dilated right atrium in the absence of significant TR and/or RVOT obstruction are also signs of RV diastolic dysfunction. Quantification of pulmonary regurgitation and clinical interpretation of RV dilatation consequent to pulmonary regurgitation need to account for the presence of restrictive RV physiology.⁵³

The severity of TR and RV systolic pressure assessment is based on generally accepted practices and is not specific for TOF patients. Especially in patients with residual RVOT, assessment of RV systolic pressure is essential as RVOT gradients may be overestimated in cases of long-segment stenosis or underestimated in cases of distal branch stenosis.

Echocardiographic protocols should specifically look for the presence, size and flow direction of residual atrial, and ventricular communications. Progressive aortic root dilatation and aortic regurgitation have been identified in patients after TOF repair and should be included in the routine follow-up. However, prospective data are reassuring suggesting that although aortic dilatation is very common it is not rapidly progressive.⁵⁴

In patients after arrhythmia ablation or after pacemaker implantation, detailed haemodynamic assessment with appropriate pacemaker optimization should be carried out with intention to achieve optimal cardiac output.

CMR imaging

Cardiovascular magnetic resonance imaging is the clinical reference technique for the serial quantification of pulmonary regurgitation, RV volumes and RV function during follow-up of adults after TOF repair (Figure 2). Contemporary publications show that reverse remodelling happens immediately after surgery with a smaller degree of ongoing biological reverse remodelling.^{55–58} Two recent studies show that the optimal preoperative threshold to achieve mid-to-late RV normalization was an indexed RV end-systolic volume (RVESVi) <80–82 mL/m², respectively.^{55,59} CMR also allows for assessment of more distal PA branches, coronary origins and proximal course, LV size and function, aortic root dimensions, and quantification of aortic regurgitation. Research centres are evaluating the role of CMR-defined myocardial scarring and degree of localized or diffuse fibrosis.^{60,61} Different centres use different CMR protocols, relating to local experience

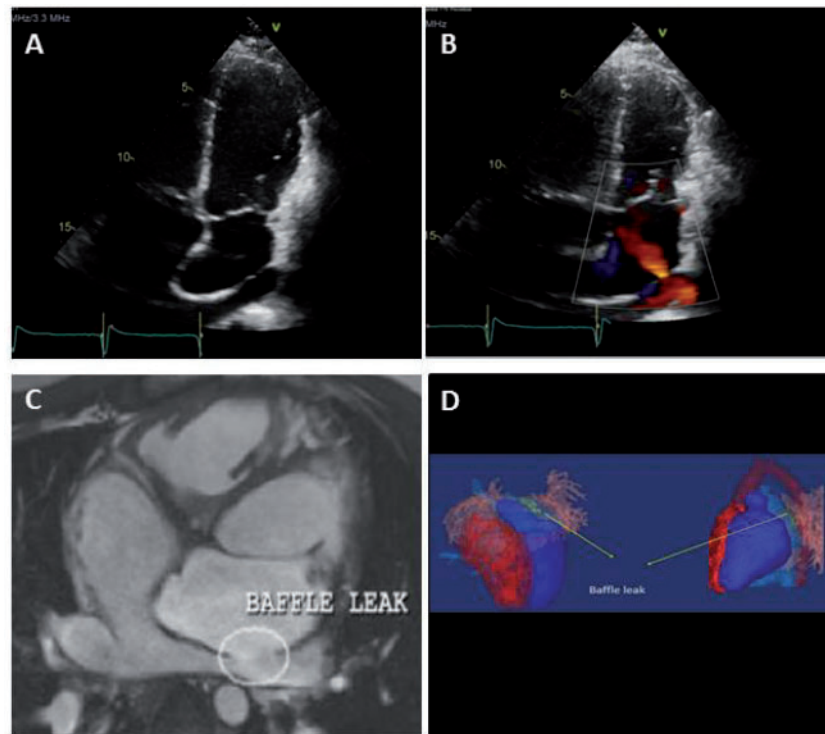


Figure 3 (A and B) Echocardiographic four-chamber view showing a large baffle leak in the pulmonary venous baffle causing a left to right shunt. (C) Cardiac magnetic resonance imaging confirming the baffle leak (circle) with left to right shunting from pulmonary venous return compartment to systemic venous return compartment. (D) 3D Reconstructions from previous cardiac magnetic resonance study (arrows indicating the baffle leaks).

coronary arteries, for example with respect to planning percutaneous pulmonary valve implantation.^{63–65}

Cardiac catheterization and angiography

Cardiac catheterization and angiography may be indicated if haemodynamic data are important for management, when echocardiography is inconclusive, and CMR is contraindicated or where cardiac CT is insufficient to exclude coronary artery disease.

Key points

- Echocardiography remains the primary imaging modality during follow-up. Typically, a patient with severe pulmonary regurgitation who is clinically stable will undergo echocardiography annually.
- 3D echo and LV GLS could be included in the echocardiography report.
- If the RV is dilated on echocardiography, and/or other lesions are detected or suspected requiring additional imaging, CMR should be employed.
- After baseline study in adulthood, CMR should then be repeated at intervals chosen according to the presence and degree of severity of aortopathy, or residual/postoperative lesions.

- For patients with significant RV dilation (e.g. RVEDVi >150 mL/m² or RVESVi >80 mL/m²), progressive dilatation or presence/decline of RV dysfunction (>6% decrease in follow-up EF), CMR follow-up is suggested after 12 months.
- CMR/CT may be useful for planning transcatheter intervention such as percutaneous pulmonary valve, or embolization of multiple aorta to PA collaterals.

Transposition of the great arteries

Transposition of the great arteries (TGA) describes the anatomic arrangement in which the aorta arises from the RV and the PA from the LV.⁶⁶

Atrial switch operation

The *atrial switch operation* (Mustard or Senning) was performed from the 1950's until the early 1980's. In this operation, channels are created within the atria to re-direct venous blood. As a result, the blood returning from the superior and inferior vena cava is channelled to the mitral valve and left ventricle to get pumped to the pulmonary circulation. Blood returning from the lungs through the pulmonary veins is channelled to the tricuspid valve and RV to get pumped to the systemic circulation. In atrial switch operations, a co-existing VSD may be left open.

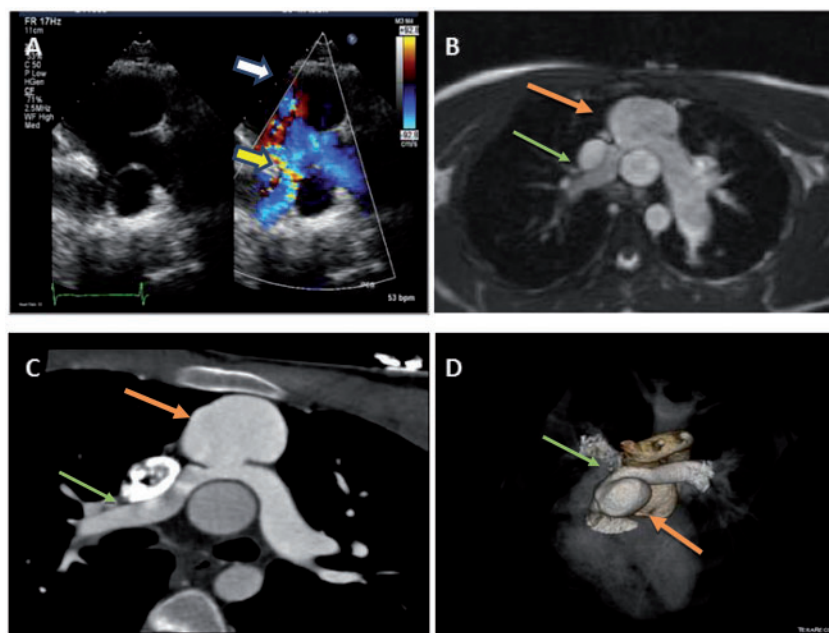


Figure 4 Multimodality imaging approach in patient after arterial switch operation with Lecompte Manoeuvre for transposition of the great arteries. (A) Echocardiographic suprasternal view showing the neo-aorta, positioned posteriorly to the main pulmonary artery bifurcation with the 'Lecompte manoeuvre'. Note colour flow acceleration at the level of the right pulmonary artery (yellow arrow) and the dilatation of the main pulmonary artery (white arrow). (B) Cardiac magnetic resonance imaging scan showing 'Lecompte manoeuvre', better details of the pulmonary arteries, a dilatation of proximal main pulmonary artery (orange arrow) and a right pulmonary artery origin stenosis (green arrow). (C and D) corresponding cardiac computed tomography scan view and 3D reconstruction.

Arterial switch operation

The majority of patients born after the early 1980's underwent the *arterial switch operation (ASO)*, where the aorta and pulmonary arteries are transected above the valves and 'switched' so that the aorta is connected to the LV and the PA to the RV. The coronary arteries are translocated using a surgical button technique. Most commonly, the pulmonary arteries then straddle the aorta (LeCompte manoeuvre), which predisposes to branch PA stenosis.

Rastelli operation

The *Rastelli operation* is performed in patients with TGA with VSD and pulmonary stenosis. A large intra-ventricular baffle is sutured to redirect the LV outflow through the VSD to the more anteriorly placed aortic valve, this also closing the interventricular communication. The proximal pulmonary trunk is oversewn and a valved conduit is employed to achieve RV-PA continuity.

After atrial switch procedures

Complications after atrial switch procedures (Mustard or Senning) include stenosis of the systemic and/or pulmonary venous pathway baffles, baffle leak, systemic tricuspid valve regurgitation, and systemic RV dysfunction. Pulmonary hypertension may develop during adulthood and its first detection may be during routine imaging.

Echocardiography

Echocardiography is important for the evaluation of systemic RV and tricuspid valve function.^{67,68} The baffled venous atrial pathways must be assessed for stenosis as well as leak using 2D, 3D, Doppler and colour Doppler imaging but small baffle leaks can be difficult to exclude without contrast⁶⁹ (Figure 3). *Contrast echocardiography* can be useful where there is high-clinical suspicion of intracardiac shunt. *TOE* provides additional information regarding presence and degree of baffled pathway stenosis, site and size of baffle leaks and detailed tricuspid valve anatomy.

Cardiovascular magnetic resonance imaging

Cardiovascular magnetic resonance imaging is the gold standard for systemic RVEF and where relevant provides important information on myocardial performance and viability (fibrosis imaging).⁷⁰ The presence of fibrosis at CMR is associated with adverse cardiac events during follow-up.⁷¹ CMR is ideal for accurate evaluation of the baffled atrial venous pathways (Figure 3).⁷² Pulmonary to systemic flow ratio ($Q_p:Q_s$) can be accurately estimated from flow velocity acquisition through the parallel aortic and pulmonary arteries and can be used to measure the haemodynamic significance of any residual VSD or of baffle leak(s).

Cardiac CT

Cardiac CT may be relevant in selected circumstances (see above).^{31–33}

Cardiac catheterization

Cardiac catheterization may be indicated if intra-cavity pressures, pressure gradients, or combined interventional procedures are required for further medical or surgical decision-making.

Key points

- Echocardiography is performed regularly for the evaluation of systemic RV and tricuspid valve function. CMR is the gold standard for surveillance of systemic RV function, and is ideal for diagnosis of baffle pathway stenosis or leak.
- Contrast echocardiography and TOE are indicated for evaluation of suspected baffle leak or stenosis of post atrial redirection baffled pathways.

After ASO

Typical problems that require follow-up in the long-term after the ASO are generally related to the great vessels and the coronary arteries. Late complications include dilatation of the neo-aortic root, neo-aortic valve regurgitation, supra-ventricular pulmonary or aortic stenosis, and reduced coronary blood flow with or without impaired myocardial function.

Echocardiography

Echocardiography is useful for monitoring of global and regional myocardial performance of both ventricles.^{73–78} When ventricular dysfunction is newly detected with echocardiography, further investigation is needed. Supra-ventricular stenosis can be picked up by Doppler flow measurements, but a supra-ventricular pulmonary stenosis may be hard to quantify accurately^{75,78,79} (Figure 4), as the region of interest is usually located immediately behind the sternum and an optimal insonation orientation is not always possible. TR velocity may be used to estimate the pressure load on the subpulmonary ventricle. Neo-aortic root and valve evaluation (size and function) is mostly feasible by TTE.

Cardiovascular magnetic resonance imaging

Cardiovascular magnetic resonance imaging is especially helpful for evaluating presence and severity of branch PA stenosis (Figure 4)⁷⁹ as well as aortic root dilatation and aortic dilatation⁸⁰ and in accurate assessment of both RV and LV function.⁸¹ Myocardial perfusion defects and scar are accurately detected by CMR, where relevant.

Pharmacological or exercise stress imaging

Pharmacological or exercise stress imaging (echocardiography ± contrast or CMR) may identify stress-induced global and regional wall motion abnormalities that may not be detected at rest. *Contrast echocardiography and CMR* can provide myocardial perfusion and scar information.

Consensus regarding the appropriate degree of proactive screening for coronary artery stenosis is lacking. Some recommend serial myocardial stress perfusion testing every 3 years, while others suggest that stress testing for evaluation of myocardial perfusion should be reserved for those with symptoms, congenitally abnormal coronary artery pattern or perioperative ischaemic issues.

Cardiovascular magnetic resonance imaging and cardiac CT

Cardiovascular magnetic resonance imaging and cardiac CT are both useful for visualization of the proximal coronary arteries in adults and were found to compare favourably with invasive angiography for coronary artery stenosis and kinking.^{81–83}

Cardiac CT

Cardiac CT is the gold standard for imaging coronary arteries and is useful when CMR is inadequate and or when there is ongoing high clinical suspicion of coronary artery abnormality and should be followed by functional ischaemia testing.

Cardiac catheterization

Cardiac catheterization is most commonly indicated when there is a potential to proceed to intervention for example to invasively study branch PA pressure gradients with a view to balloon angioplasty and stenting. Invasive selective coronary angiography may be considered in patients in whom coronary artery stenosis is strongly suspected based on symptoms or the results of non-invasive imaging.

Key points

- In ACHD patients after the ASO, echocardiography is regularly performed during follow-up, CMR is periodically performed for evaluation of postoperative complications (supra-ventricular branch PA stenosis, aortic root dilatation, and myocardial dysfunction).
- Echocardiography/CMR myocardial stress perfusion, depending on image quality, is utilized in selected cases for further evaluation for functional ischaemia.
- Cardiac CT or invasive coronary angiography may be considered at least once in adulthood in all patients with reimplanted coronary arteries to ensure vessel patency or when there is clinical or stress imaging suspicion of ischaemia.

After the Rastelli operation

During follow-up after the Rastelli operation, RV-PA conduit dysfunction is common and eventually all patients require conduit revision or replacement. Moreover, subpulmonary ventricular function might become impaired over time because of a longstanding pressure overload. The LV outflow to the aorta post Rastelli is at risk of subaortic obstruction and the aortic valve is in some cases dysfunctional as a consequence of an enlarged valvular annulus. Persistent VSD

secondary to patch/baffle dehiscence is not uncommon as prosthetic material might degenerate over time.

Echocardiographic

Echocardiographic evaluation of the conduit, pulmonary trunk, and (if possible) PA branches is essential in the follow-up of Rastelli patients. However, as the valved conduit is located immediately behind the sternum, it is relatively difficult to directly estimate the RVOT pressure gradient. As outflow tract gradients might be under- or overestimated, it is important to qualitatively evaluate subpulmonary RV function and estimate RV systolic pressure based on tricuspid valve regurgitation velocity. *TOE* can give complementary information when assessing for residual intracardiac shunt.

Cardiovascular magnetic resonance imaging

Cardiovascular magnetic resonance imaging enables quantification of subpulmonary RV function. CMR can be especially useful in multilevel RVOT to determine the site of the most haemodynamically significant obstruction e.g. at subvalvar, valvar, or supra-valvar anatomical level.⁴⁵

Cardiac CT

Cardiac CT is relevant in selected circumstances (see above).

Cardiac catheterization

Cardiac catheterization is often utilized before redo surgery to provide crucial information on intra-cavity pressures, end-diastolic ventricular pressures, pressure gradients and coronary and pulmonary angiography, before proceeding to percutaneous pulmonary valve implantation in suitable patients.

Key points

- Echocardiography and CMR are performed regularly in ACHD patients after Rastelli operation for evaluation of postoperative complications (RV-PA conduit dysfunction, LV outflow tract obstruction, aortic valve regurgitation, late VSD patch leak, RV and LV function).
- Cardiac CT and cardiac catheterization may be useful before reintervention, including determining suitability for transcatheter pulmonary valve replacement.

Atrioventricular and ventriculo-arterial discordance (unoperated)

Atrioventricular and ventriculo-arterial (AV-VA) discordance or congenitally corrected TGA (ccTGA) is a rare malformation often associated with dextrocardia/mesocardia or situs inversus, VSD, pulmonary stenosis. The condition and associated outcomes are highly variable. Unoperated, patients can be asymptomatic for decades but the morphologic RV and the tricuspid valve in systemic

position tend to fail over time. The tricuspid valve maybe dysplastic, 'Ebstein-like' and contributes to the TR. The TR leads to RV volume overload and exacerbates RV dysfunction. Severe RV failure or fatal tachyarrhythmia can occur unpredictably. Medical follow-up will aim to identify sub-clinical systemic RV dysfunction.⁸⁴⁻⁸⁸

Careful imaging evaluation of the mechanism and severity of TR and RV function allows contribution to clinical decision-making regarding tricuspid valve repair, tricuspid valve replacement, or PA banding to shift the interventricular septum towards the systemic RV.⁸⁷ Surgery for severe TR in ccTGA patients with preoperative RVEF >40% (from echocardiography, angiography, CMR, or CT) has better outcomes with respect to postoperative RV function.⁸⁸

Echocardiography

Echocardiography should be performed at least annually. The common presence of dextrocardia or mesocardia together with concerns regarding the accuracy of systemic RV function and TR quantification are particularly challenging for the echocardiographer. FAC and systemic RV-GLS are the echocardiographic measures which correlated best with CMR-derived RV EF,⁸⁷ exercise capacity and biomarkers.⁸⁸⁻⁹⁰ A cut-off value of RV-GLS <-16.3% identified a CMR-derived RVEF \geq 45% with a sensitivity of 77.3% and a specificity of 72.7%. Decreased RV-GLS is associated with elevated NT-proBNP.^{87,91} PA pressure can be estimated from mitral regurgitation velocity.

Cardiovascular magnetic resonance imaging

Cardiovascular magnetic resonance imaging is the gold standard to evaluate systemic RV EF, mass and volume,⁸³⁻⁸⁶ and can be used to quantify tricuspid regurgitant fraction and may complement echo to understand the mechanism of TR. CMR should be performed as a baseline evaluation, repeated when there change in clinical status or signs of deterioration on TTE and then regularly in patients with progressive TR. The contemporary gold standard for measurement of RVEF is CMR. Devices are not uncommon in ccTGA due to the high incidence of conduction disturbance and arrhythmia. In those with MR non-compatible pacemakers and defibrillators CMR may not be feasible (unpredictable artefacts or lack of local expertise).

Cardiac CT

Cardiac CT is not routinely recommended. However, when there is a contra-indication for CMR and RVEF is a crucial question then it is feasible to obtain RV volumes from retrospectively gated CT acquisitions at the cost of increased irradiation. The use of CT in this population is usually for preoperative screening for coronary artery disease in older patients (>40 years).

Cardiac catheterization

Cardiac catheterization is usually confined to assessment of end-diastolic ventricular pressure and pulmonary vascular resistance in preoperative patients including those being assessed for heart or heart and lung transplantation or in cases where there is uncertainty despite full non-invasive evaluation.

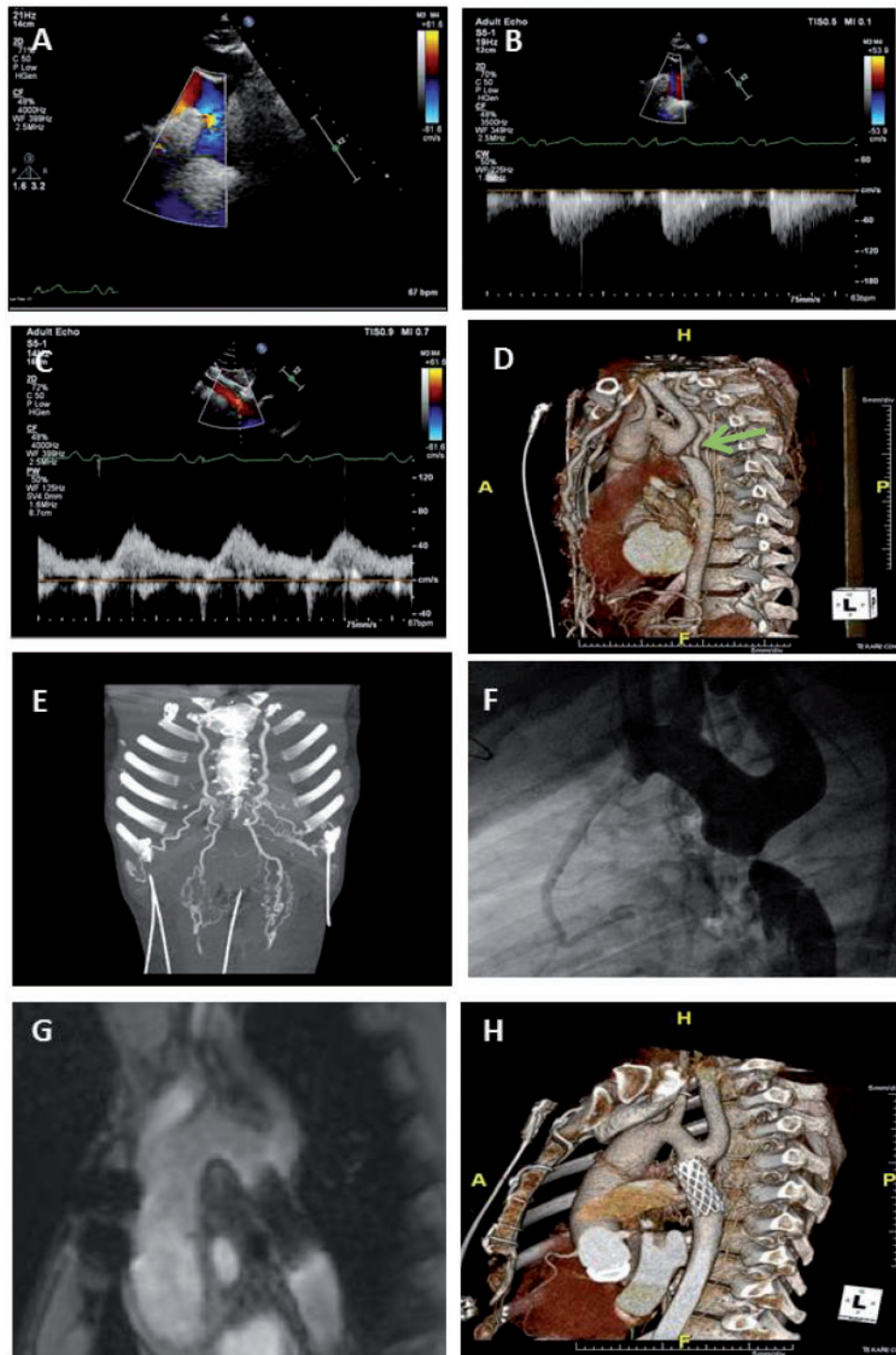


Figure 5 Multimodality imaging evaluation in an adult patient native severe aortic coarctation. (A and B) Echocardiographic suprasternal view with colour Doppler, showing a narrowing of the proximal descending aorta distal to subclavian artery. Corresponding continuous-wave Doppler showing an under-estimated peak gradient across the coarctation with the evidence of diastolic tail. (C) Abdominal aorta with dampened low-velocity signal with continuation flow through diastole. (D) 3D reconstruction at cardiac computed tomography scan showing just distal to the left subclavian artery origin a very severe discrete coarctation of the aorta (green arrow) with probable complete obstruction; the coarctation site is bypassed by numerous collateral arteries. (E) Cardiac computed tomography scan focused on the numerous and very well developed collateral arteries; in addition, there are enlarged intercostal, internal mammary and epigastric arteries, large collaterals around the scapulae, and numerous enlarged vessels throughout the mediastinum. (F) Angiography showing the very severe aortic coarctation with multiple collaterals. (G) Cardiac magnetic resonance imaging showing the stent at the site of previous coarctation. (H) The same stent showed by 3D reconstruction at cardiac computed tomography scan.

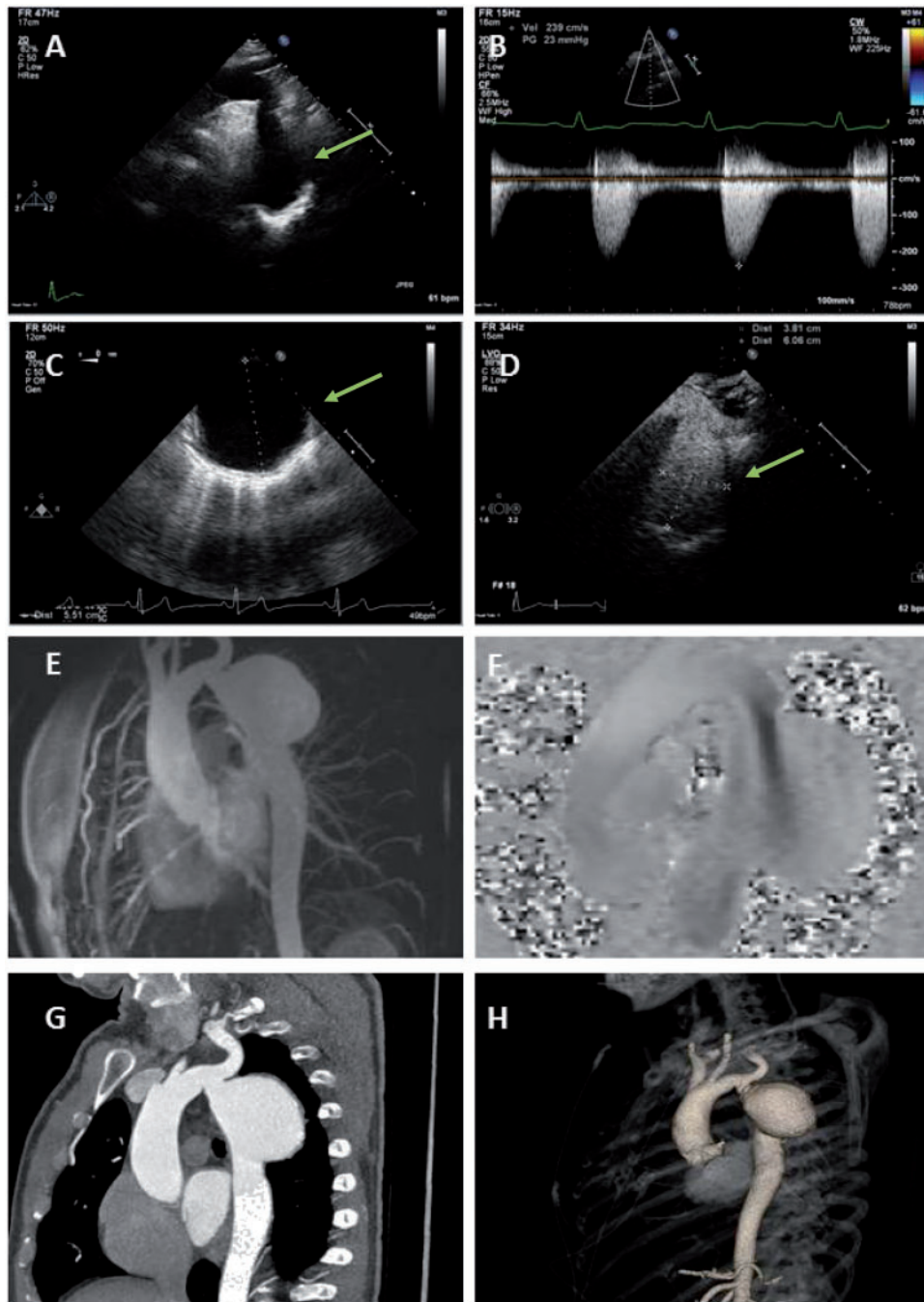


Figure 6 Multimodality imaging assessment in patient with a large aortic aneurysm post coarctation repair. (A) Echocardiographic suprasternal view showing an aortic aneurysm in the descending aorta just after the origin of the left subclavian artery (green arrow). (B) Corresponding continuous-wave Doppler showing no residual coarctation (peak gradient 23 mmHg; no significant diastolic tail). (C) Transoesophageal echocardiography showing a max diameter of 55.1 mm in descending aorta (green arrow). (D) Focus study for aortic aneurysm using echo-contrast; contrast filled the aortic aneurysm (61 × 38 mm) (green arrow). (E) Cardiac magnetic resonance imaging scan showing the large aortic aneurysm. (F) Cardiac magnetic resonance imaging scan showing aortic flow. (G) The same aortic aneurysm showed by cardiac computed tomography scan; the aneurysm is thin-walled, not calcified and does not contain thrombus. (H) 3D reconstruction of aorta by cardiac computed tomography.

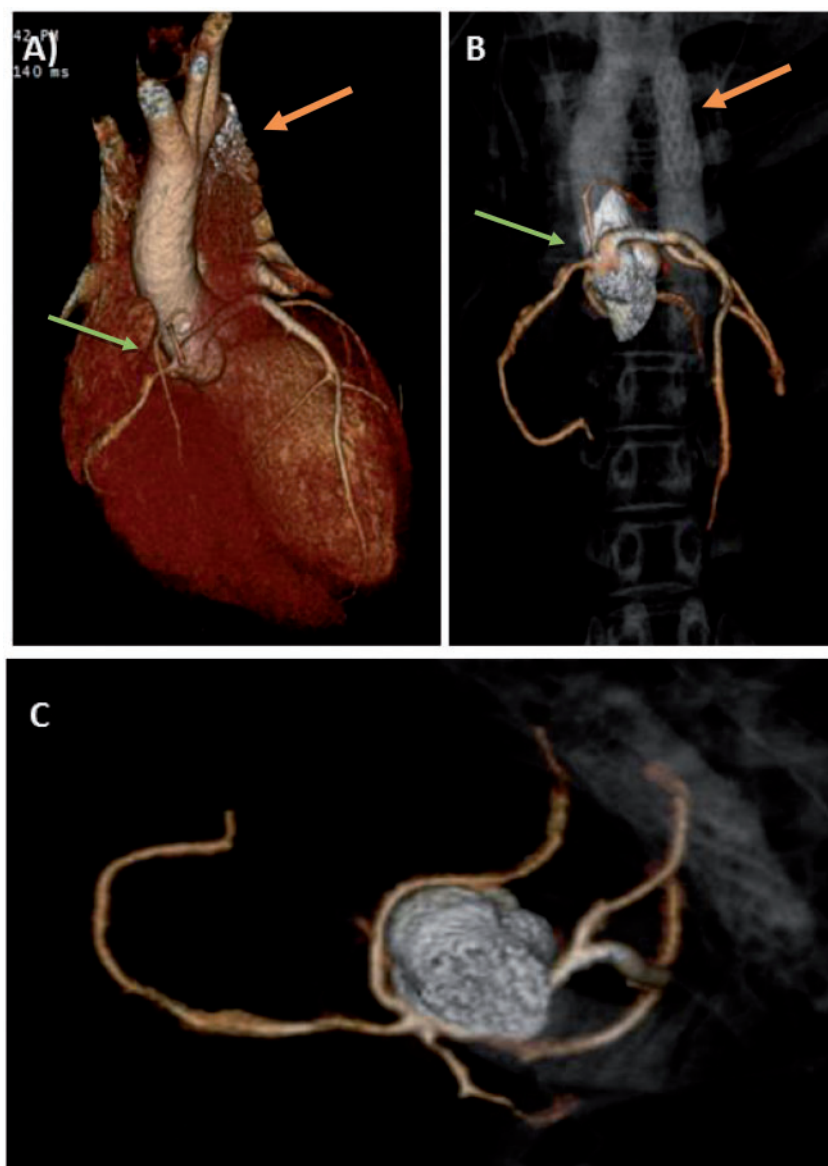


Figure 7 Cardiac computed tomography scan of patient with a rare variant of a single coronary ostium arising from the right sinus of Valsalva (A and B) 3D reconstruction showing a normal ascending aorta with stenting of the proximal part of descending thoracic aorta for a previous coarctation (green arrow); all three coronary arteries originated from a single ostium in the right aortic sinus (orange arrow). (C) Upper view of the single right coronary ostium with the course of coronary arteries. Courtesy of Dr Thomas Semple.

Key points

- Function of the systemic RV and degree of TR should be monitored regularly (annually) with echocardiography.
- CMR should be performed at baseline and be repeated regularly or when there is change in clinical status or echocardiographic findings.
- Cardiac CT is not routinely recommended.
- Cardiac Catheterization should be performed to assess ventricular end-diastolic pressure or pulmonary vascular resistance.

AV and VA discordance after surgical (anatomical) repair

Surgical correction of the AV-VA discordance may involve either the double switch operation (ASO combined with atrial redirection) or a Rastelli–Senning operation (VSD closure, intracardiac baffle, RV-PA conduit plus atrial redirection) and is usually performed in childhood. The potential advantage is that the LV becomes the systemic ventricle, however, there are numerous long-term complications as described under each of these procedures separately above.

Aortic coarctation

Coarctation of the aorta is a congenital malformation characterized by a narrowing of the aorta close to the isthmus generating a pressure gradient between the transverse aortic arch and the distal thoracic aorta.⁹² Coarctation is part of a generalized arteriopathy, as demonstrated by histology studies; unfavourable intima-media thickness and stiffness index of the carotid arteries has been found in individuals with a gothic aortic arch.⁹³ Vascular remodelling after aortic arch surgery depends on the aortic arch geometry. The majority of adult patients have undergone surgical repair in childhood. However, for other patients coarctation is only diagnosed in adulthood following investigations for systemic hypertension or as an incidental finding. Coarctation is not a simple disease.⁹⁴ Despite successful repair increased morbidity and premature mortality are well described during adult follow-up. Systemic arterial hypertension, premature atherosclerotic coronary artery disease, and cerebrovascular disease can occur without residual coarctation.^{95–97} Patients require follow-up for concomitant congenital aortic or mitral disease (bicuspid aortic valve is a common association), recoarctation, and for aneurysm or dissection at the site of repaired coarctation. Rupture of an aneurysm of the circle of Willis is a recognized associated complication.^{95–98}

Echocardiographic views

Echocardiographic views of the aortic arch are obtained from the suprasternal view. During follow-up, a residual or recurrent narrowing of the distal aortic arch and/or site of previous repair can be suspected by echocardiography. Generally, a peak pressure gradient ≥ 25 –30 mmHg with a diastolic tail⁹⁹ has been used to define a significant residual coarctation for which catheterization, or surgical interventions is indicated (Figure 5). The assessment of the isthmus gradient is dependent on cardiac function and on the presence of concomitant LV lesions (mitral stenosis, aortic stenosis may underestimate the coarctation gradient, while aortic regurgitation may overestimate the gradient).^{100–102} From the subcostal view, the pulsed-wave Doppler assessment of the abdominal aorta can show a reduced systolic flow with diastolic continuation and no early diastolic flow reversal as marker of significant coarctation. Echocardiography can diagnose the most common associated abnormalities such as bicuspid aortic valve, ascending aortopathy, sub aortic stenosis, mitral valve abnormalities and VSDs (Figure 6). Cardiac function, in the presence of a good acoustic window, can be accurately monitored by echo. Although LV systolic function is generally reported to be normal, after successful coarctation repair, myocardial deformation imaging demonstrated a persistent impairment of

the longitudinal function.¹⁰³ Echo-Doppler tends to overestimate the coarctation gradient as compared with catheterization data because of the lack of incorporation of proximal velocities and different haemodynamic conditions (anaesthesia/sedation during the invasive procedure). However, a specific cut-off value for the gradient is not recommended, but rather integration of the corrected Doppler gradient to the clinical status of an individual patient considering symptoms, the presence of systemic hypertension, non-invasively measured blood pressure difference between upper and lower extremities, reduced ventricular function, concomitant valvular heart disease and the morphological evaluation of the aortic arch. However, in adult patients with successful aortic coarctation repair, visualization of the aortic arch to rule out complications, such as aneurysm formation and recoarctation, may be suboptimal.

Cardiovascular magnetic resonance imaging

Cardiovascular magnetic resonance imaging is routinely used and cost-effective¹⁰⁴ to inform the late diagnosis of native coarctation, to assess the severity of coarctation, the anatomy of the aortic arch, the presence of collateral arteries, the suitability for stenting and to document pre-intervention LV mass, volumes and function. Quantification of the collateral circulation is made by measuring flow with phase-contrast cine sequence proximal to the stenosis but distally to all aortic branches and at the level of the diaphragm.¹⁰⁵ CMR is the preferred modality for serial imaging of the aortic arch, due to the ability to visualise the whole aortic arch and the accuracy and reproducibility of vascular diameter measurements^{106,107} (Figure 6). 3D reconstructions (from CMR or CT) aid procedural planning for intervention especially in native coarctation.^{106,108,109} CMR 4D flow may be useful to evaluate wall stress and predisposition to aneurysm.^{110,111} Cardiac CT may be preferable if there is concern regarding coarctation stent patency or for stent fracture (Figures 5 and 7).

Key points

- Doppler derived pressure gradients ≥ 25 –30 mmHg with a diastolic tail indicate significant coarctation; these gradients need to be interpreted in the context of associated lesions and ventricular function.
- Periodic imaging of the entire aortic arch, preferably with CMR, is recommended.
- CT may be the method of choice to assess stent patency or stent fracture.

Univentricular heart

The term univentricular heart describes a wide spectrum of heart disease, in which only one ventricular chamber supports the circulation. The palliative procedure of choice, the Fontan operation, incorporates the dominant ventricle as the exclusive pump to the systemic circulation, and the systemic venous return is connected surgically to the pulmonary arteries and does not contain an active pump but

lymphatic flow discordance and can guide percutaneous procedures.^{120–123}

Key points

- Echocardiography remains first line imaging for assessment of patency of Fontan pathways, valve function, and systolic and diastolic ventricular function.
- CMR is routine for Fontan surveillance in ACHD and can establish patency of pathways, is sensitive for excluding thrombus, accurately quantifies systolic function (EF), atrioventricular valve regurgitation and allows evaluation of central pulmonary arteries, aortic arch, and veno-venous collaterals.
- CT may be advisable before re-intervention as it may guide the catheterization or surgical approach.

Conclusions

Cardiovascular imaging has evolved from a single modality-based to an integrated multimodality based approach in order to achieve a comprehensive and detailed assessment of individual patient morphology, pathophysiology, and haemodynamics and for guidance of therapy. ACHD patients are a heterogeneous population, with a large spectrum of anatomic substrates even within specific lesions. In addition, the nature of previous surgery and other intervention is highly variable rendering each patient unique. As the ACHD population continues to age, acquired heart disease will also require cardiac imaging assessment. It is, therefore, logical that ACHD patients are amongst those with the most to benefit from the appropriate application of a multimodality imaging approach by appropriately expert imagers in centres with sufficient expertise. It remains important to appreciate the different advantages and disadvantages of different cardiovascular imaging modalities as they evolve. Increasingly, clinicians will benefit from fused multi-modality imaging datasets. The goal should be to provide the most appropriate and cost-effective diagnostic pathway for each individual ACHD patient. In other words, ACHD patients should have the right imaging, at the right place by the right operator at the right time.

Acknowledgement

We gratefully thank Dr Thomas Semple BSc, MBBS, FRCR Radiology department, The Royal Brompton Hospital and National Heart and Lung Institute, Imperial College London, in contributing images to better illustrate this paper.

Conflict of interest: None declared.

References

1. Baumgartner H, Bonhoeffer P, De Groot NM, de Haan F, Deanfield JE, Galie N; Task Force on the Management of Grown-up Congenital Heart Disease of the European Society of Cardiology (ESC); Association for European Paediatric Cardiology (AEPC); ESC Committee for Practice Guidelines (CPG). ESC guidelines for the management of grown-up congenital heart disease (new version 2010). *Eur Heart J* 2010;**31**:2915–57.

2. Babu-Narayan SV, Giannakoulas G, Valente AM, Li W, Gatzoulis MA. Imaging of congenital heart disease in adults. *Eur Heart J* 2016;**37**:1182–95.
3. Burchill LJ, Huang J, Tretter JT, Khan AM, Crean AM, Veldtman GR et al. Noninvasive imaging in adult congenital heart disease. *Circ Res* 2017;**120**:995–1014.
4. Orwat S, Diller GP, Baumgartner H. Imaging of congenital heart disease in adults: choice of modalities. *Eur Heart J Cardiovasc Imaging* 2014;**15**:6–17.
5. Valente AM, Cook S, Festa P, Ko HH, Krishnamurthy R, Taylor AM et al. Multimodality imaging guidelines for patients with repaired tetralogy of Fallot: a report from the American society of echocardiography. Developed in collaboration with the society for cardiovascular magnetic resonance and the society for pediatric radiology. *J Am Soc Echocardiogr* 2014;**27**:111–41.
6. Rudski LG, Lai WW, Afilalo J, Hua L, Handschumacher MD, Chandrasekaran K et al. Guidelines for the echocardiographic assessment of the right heart in adults: a report from the American Society of Echocardiography endorsed by the European Association of Echocardiography, a registered branch of the European Society of Cardiology, and the Canadian Society of Echocardiography. *J Am Soc Echocardiogr* 2010;**23**:685–713.
7. D'Alto M, Dimopoulos K, Budts W, Diller GP, Di Salvo G, Dellegrattaglia S et al. Multimodality imaging in congenital heart disease-related pulmonary arterial hypertension. *Heart* 2016;**102**:910–8.
8. Inuzuka R, Diller GP, Borgia F, Benson L, Tay EL, Alonso-Gonzalez R et al. Comprehensive use of cardiopulmonary exercise testing identifies adults with congenital heart disease at increased mortality risk in the medium term. *Circulation* 2012;**125**:250–9.
9. Hoffmann A, Engelfriet P, Mulder B. Radiation exposure during follow-up of adults with congenital heart disease. *Int J Cardiol* 2007;**118**:151–3.
10. Einstein AJ, Knuuti J. Cardiac imaging: does radiation matter? *Eur Heart J* 2012;**33**:573–8.
11. Simpson J, Lopez L, Acar P, Friedberg MK, Khoo NS, Ko HH et al. Three-dimensional echocardiography in congenital heart disease: an expert consensus document from the European Association of Cardiovascular Imaging and the American Society of Echocardiography. *J Am Soc Echocardiogr* 2017;**30**:1–27.
12. Lang RM, Badano LP, Mor-Avi V, Afilalo J, Armstrong A, Ernande L et al. Recommendations for cardiac chamber quantification by echocardiography in adults: an update from the American Society of Echocardiography and the European Association of Cardiovascular Imaging. *Eur Heart J Cardiovasc Imaging* 2015;**16**:233–70.
13. Orwat S, Diller GP, Kempny A, Radke R, Peters B, Kuhne T et al. Myocardial deformation parameters predict outcome in patients with repaired tetralogy of Fallot. *Heart* 2016;**102**:209–15.
14. Nagueh SF, Smiseth OA, Appleton CP, Byrd BF, Dokainish H, Edvardsen T et al. Recommendations for the evaluation of left ventricular diastolic function by echocardiography: an update from the American Society of Echocardiography and the European Association of Cardiovascular Imaging. *Eur Heart J Cardiovasc Imaging* 2016;**17**:1321–60.
15. D'Anna C, Caputi A, Natali B, Leonardi B, Secinaro A, Rinelli G et al. Improving the role of echocardiography in studying the right ventricle of repaired tetralogy of Fallot patients: comparison with cardiac magnetic resonance. *Int J Cardiovasc Imaging* 2017; doi:10.1007/s10554-017-1249-1.
16. Duppen N, Geerdink LM, Kuipers IM, Bossers SS, Koopman LP, van Dijk AP et al. Regional ventricular performance and exercise training in children and young adults after repair of tetralogy of Fallot: randomized controlled pilot study. *Circ Cardiovasc Imaging* 2015;**8**:pii: e002006. doi: 10.1161/CIRCIMAGING.114.002006.
17. Mercer-Rosa L, Yang W, Kutty S, Rychik J, Fogel M, Goldmuntz E. Quantifying pulmonary regurgitation and RV function in surgically repaired tetralogy of Fallot: a comparative analysis of echocardiography and magnetic resonance imaging. *Circ Cardiovasc Imaging* 2012;**5**:637–43.
18. Kalogeropoulos AP, Deka A, Border W, Pernetz MA, Georgiopolou VV, Kiani J et al. Right ventricular function with standard and speckle-tracking echocardiography and clinical events in adults with D-transposition of the great arteries post atrial switch. *J Am Soc Echocardiogr* 2012;**25**:304–12.
19. Porter TR, Mulvagh SL, Abdelmoneim SS, Becher H, Belcik JT, Bierig M et al. Clinical applications of ultrasonic enhancing agents in echocardiography: 2018 American Society of Echocardiography Guidelines Update. *J Am Soc Echocardiogr* 2018;**31**:241–74.
20. Flachskampf FA, Wouters PF, Edvardsen T, Evangelista A, Habib G, Hoffman P et al.; European Association of Cardiovascular Imaging. Recommendations for transoesophageal echocardiography: EACVI update 2014. *Eur Heart J Cardiovasc Imaging* 2014;**15**:353–65. Review.
21. Whiteside W, Pasquali SK, Yu S, Bocks ML, Zampi JD, Armstrong AK. The utility of intracardiac echocardiography following MelodyTM transcatheter pulmonary valve implantation. *Pediatr Cardiol* 2015;**36**:1754–60.
22. Jone PN, Ross MM, Bracken JA, Mulvahill MJ, Di Maria MV, Fagan TE. Feasibility and safety of using a fused echocardiography/fluoroscopy imaging system in patients with congenital heart disease. *J Am Soc Echocardiogr* 2016;**29**:513–21.

23. Zamorano JL, Bax J, Knuuti J, Lancellotti P, Badano L, Sechtem U. *The ESC Textbook of Cardiovascular Imaging (the European Society of Cardiology, 2nd ed.* Oxford: Oxford University Press; 2015.p588–600.
24. Kilner PJ, Geva T, Kaemmerer H, Trindade PD, Schwitter J, Webb GD. Recommendations for cardiovascular magnetic resonance in adults with congenital heart disease from the respective working groups of the European Society of Cardiology. *Eur Heart J* 2010;**31**:794–805.
25. Luijnenburg SE, Robbers-Visser D, Moelker A, Vliegen HW, Mulder BJ, Helbing WA. Intra-observer and interobserver variability of biventricular function, volumes and mass in patients with congenital heart disease measured by CMR imaging. *Int J Cardiovasc Imaging* 2010;**26**:57–64.
26. Fratz S, Schuhbaeck A, Buchner C, Busch R, Meierhofer C, Martinoff S et al. Comparison of accuracy of axial slices versus short-axis slices for measuring ventricular volumes by cardiac magnetic resonance in patients with corrected tetralogy of Fallot. *Am J Cardiol* 2009;**103**:1764–9.
27. Brignole M, Auricchio A, Baron-Esquivas G, Bordachar P, Boriani G, Breithardt OA et al. ESC guidelines on cardiac pacing and cardiac resynchronization therapy: the task force on cardiac pacing and resynchronization therapy of the European Society of Cardiology (ESC). Developed in collaboration with the European Heart Rhythm Association (EHRA). *Eur Heart J* 2013;**2013**:2281–329.
28. Kanal E, Barkovich AJ, Bell C, Borgstede JP, Bradley WG Jr, Froelich JW et al.; ACR Blue Ribbon Panel on MR Safety. ACR guidance document for safe MR practices: 2007. *AJR Am J Roentgenol* 2007;**188**:1447–74.
29. ACOG Committee on Obstetric Practice. ACOG Committee Opinion. Number 299, September 2004 (replaces No. 158, September 1995). Guidelines for diagnostic imaging during pregnancy. *Obstet Gynecol* 2004;**104**:647–51.
30. Patenaude Y, Pugash D, Lim K, Morin L, Lim K, Bly S et al. The use of magnetic resonance imaging in the obstetric patient. *J Obstet Gynaecol Can* 2014;**36**:349–63.
31. Bonnichsen C, Ammash N. Choosing between MRI and CT imaging in the adult with congenital heart disease. *Curr Cardiol Rep* 2016;**18**:45.
32. Wiand A, Nyberg E, Gilkeson RC. CT evaluation of congenital heart disease in adults. *AJR Am J Roentgenol* 2009;**193**:388–96.
33. Goo HW, Seo DM, Yun TJ, Park JJ, Park IS, Ko JK et al. Coronary artery anomalies and clinically important anatomy in patients with congenital heart disease: multislice CT findings. *Pediatr Radiol* 2009;**39**:265–73.
34. Contijoch FJ, Groves DW, Chen Z, Chen MY, McVeigh ER. A novel method for evaluating regional RV function in the adult congenital heart with low-dose CT and SQUEEZ processing. *Int J Cardiol* 2017; pii: S0167–5273(17)33446-0. doi: 10.1016/j.ijcard.2017.08.040.
35. Rigolli M, Anandabaskaran S, Christiansen JP, Whalley GA. Bias associated with left ventricular quantification by multimodality imaging: a systematic review and meta-analysis. *Open Heart* 2016;**3**:e000388.
36. Dimopoulos K, Giannakoulas G, Bendayan I, Liodakis E, Petraco R, Diller GP et al. Cardiothoracic ratio from postero-anterior chest radiographs: a simple, reproducible and independent marker of disease severity and outcome in adults with congenital heart disease. *Int J Cardiol* 2013;**166**:453–7.
37. Mazal JR, Rogers T, Schenke WH, Faranesh AZ, Hansen M, O'Brien K et al. Interventional-cardiovascular MR: role of the Interventional MR Technologist. *Radiol Technol* 2016;**87**:261–70.
38. Muthurangu V, Taylor A, Andriantsimiavona R, Hegde S, Miquel ME, Tulloh R et al. Novel method of quantifying pulmonary vascular resistance by use of simultaneous invasive pressure monitoring and phase-contrast magnetic resonance flow. *Circulation* 2004;**110**:826–34.
39. Razavi R, Hill DL, Keevil SF, Miquel ME, Muthurangu V, Hegde S et al. Cardiac catheterisation guided by MRI in children and adults with congenital heart disease. *Lancet* 2003;**362**:1877–82.
40. Biglino G, Capelli C, Wray J, Schievano S, Leaver LK, Khambadkone S et al. 3D-manufactured patient-specific models of congenital heart defects for communication in clinical practice: feasibility and acceptability. *BMJ Open* 2015;**5**:e007165.
41. Gosnell J, Pietila T, Samuel BP, Kurup HKN, Haw MP, Vettukattil JJ. Integration of computed tomography and three-dimensional echocardiography for hybrid three-dimensional printing in congenital heart disease. *J Digital Imaging* 2016;**29**:665–9.
42. Kempny A, Fernández-Jiménez R, Orwat S, Schuler P, Bunck AC, Maintz D et al. Quantification of biventricular myocardial function using cardiac magnetic resonance feature tracking, endocardial border delineation and echocardiographic speckle tracking in patients with repaired tetralogy of Fallot and healthy controls. *J Cardiovasc Magn Reson* 2012;**14**:32.
43. van der Hulst AE, Delgado V, Holman ER, Kroft LJ, de Roos A, Hazekamp MG et al. Relation of left ventricular twist and global strain with right ventricular dysfunction in patients after operative “correction” of tetralogy of Fallot. *Am J Cardiol* 2010;**106**:723–9.
44. Larios G, Friedberg MK. Imaging in repaired tetralogy of Fallot with a focus on recent advances in echocardiography. *Curr Opin Cardiol* 2017;**32**:490–502.
45. Beurskens NEG, Gorter TM, Pieper PG, Hoendermis ES, Bartelds B, Ebels T et al. Diagnostic value of Doppler echocardiography for identifying hemodynamic significant pulmonary valve regurgitation in tetralogy of Fallot: comparison with cardiac MRI. *Int J Cardiovasc Imaging* 2017; doi: 10.1007/s10554-017-1165-4.
46. Almeida-Morais L, Pereira-da-Silva T, Branco L, Timóteo AT, Agapito A, de Sousa L et al. The value of right ventricular longitudinal strain in the evaluation of adult patients with repaired tetralogy of Fallot: a new tool for a contemporary challenge. *Cardiol Young* 2017;**27**:498–506.
47. Dragulescu A, Grosse-Wortmann L, Fackoury C, Riffle S, Waiss M, Jaeggi E et al. Echocardiographic assessment of right ventricular volumes after surgical repair of tetralogy of Fallot: clinical validation of a new echocardiographic method. *J Am Soc Echocardiogr* 2011;**24**:1191–8.
48. Crean AM, Maredia N, Ballard G, Menezes R, Wharton G, Forster J et al. 3D Echo systematically underestimates right ventricular volumes compared to cardiovascular magnetic resonance in adult congenital heart disease patients with moderate or severe RV dilatation. *J Cardiovasc Magn Reson* 2011;**13**:78.
49. Menting ME, van den Bosch AE, McGhie JS, Eindhoven JA, Cuypers JA, Witsenburg M et al. Assessment of ventricular function in adults with repaired Tetralogy of Fallot using myocardial deformation imaging. *Eur Heart J Cardiovasc Imaging* 2015;**16**:1347–57.
50. Cheung EW, Liang XC, Lam WW, Cheung YF. Impact of right ventricular dilation on left ventricular myocardial deformation in patients after surgical repair of tetralogy of Fallot. *Am J Cardiol* 2009;**104**:1264–70.
51. Gatzoulis MA, Clark AL, Cullen S, Newman CG, Redington AN. Right ventricular diastolic function 15 to 35 years after repair of tetralogy of Fallot. Restrictive physiology predicts superior exercise performance. *Circulation* 1995;**91**:1775–81.
52. Norgård G, Gatzoulis MA, Moraes F, Lincoln C, Shore DF, Shinebourne EA et al. Relationship between type of outflow tract repair and postoperative right ventricular diastolic physiology in tetralogy of Fallot implications for long-term outcome. *Circulation* 1996;**94**:3276–80.
53. Frigiola A, Giardini A, Taylor A, Tsang V, Derrick G, Khambadkone S et al. Echocardiographic assessment of diastolic biventricular properties in patients operated for severe pulmonary regurgitation and association with exercise capacity. *Eur Heart J Cardiovasc Imaging* 2012;**13**:697–702.
54. Bonello B, Shore DF, Uebing A, Diller GP, Keegan J, Burman ED et al. Aortic dilation in repaired tetralogy of Fallot. *JACC Cardiovasc Imaging* 2017; pii: S1936-878X(17)30194-8. doi:10.1016/j.jcmg.2017.01.021.
55. Heng EL, Bolger AP, Kempny A, Davlouros PA, Davidson S, Swan L et al. Neurohormonal activation and its relation to outcomes late after repair of tetralogy of Fallot. *Heart* 2015;**101**:447–54.
56. Kim YY, Ruckdeschel E. Approach to residual pulmonary valve dysfunction in adults with repaired tetralogy of Fallot. *Heart* 2016;**102**:1520–6.
57. Lee C, Kim YM, Lee CH, Kwak JG, Park CS, Song JY et al. Outcomes of pulmonary valve replacement in 170 patients with chronic pulmonary regurgitation after relief of right ventricular outflow tract obstruction: implications for optimal timing of pulmonary valve replacement. *J Am Coll Cardiol* 2012;**60**:1005–14.
58. Ferraz Cavalcanti PE, Sá MP, Santos CA, Esmeraldo IM, de Escobar RR, de Menezes AM et al. Pulmonary valve replacement after operative repair of tetralogy of Fallot: meta-analysis and meta-regression of 3,118 patients from 48 studies. *J Am Coll Cardiol* 2013;**62**:2227–43.
59. Bokma JP, Winter MM, Oosterhof T, Vliegen HW, van Dijk AP, Hazekamp MG et al. Preoperative thresholds for mid-to-late haemodynamic and clinical outcomes after pulmonary valve replacement in tetralogy of Fallot. *Eur Heart J* 2016;**37**:829–35.
60. Tretter JT, Friedberg MK, Wald RM, McElhinney DB. Defining and refining indications for transcatheter pulmonary valve replacement in patients with repaired tetralogy of Fallot: contributions from anatomical and functional imaging. *Int J Cardiol* 2016;**221**:916–25.
61. Babu-Narayan SV, Kilner PJ, Li W, Moon JC, Goktekin O, Davlouros PA et al. Ventricular fibrosis suggested by cardiovascular magnetic resonance in adults with repaired tetralogy of Fallot and its relationship to adverse markers of clinical outcome. *Circulation* 2006;**113**:405–13.
62. Khairy P, Van Hare GF, Balaji S, Berul CI, Cecchin F, Cohen MI et al.; PACES/HRS Expert Consensus Statement on the Recognition and Management of Arrhythmias in Adult Congenital Heart Disease. Developed in partnership between the Pediatric and Congenital Electrophysiology Society (PACES) and the Heart Rhythm Society (HRS). Endorsed by the governing bodies of PACES, HRS, the American College of Cardiology (ACC), the American Heart Association (AHA), the European Heart Rhythm Association (EHRA), the Canadian Heart Rhythm Society (CHRS), and the International Society for Adult Congenital Heart Disease (ISACHD). *Can J Cardiol* 2014;**30**:e1–63.
63. Malone L, Fonseca B, Fagan T, Gralla J, Wilson N, DiMaria M et al. Preprocedural risk assessment prior to PPVI with CMR and cardiac CT. *Pediatr Cardiol* 2017;**38**:746–53.

64. Hrusca A, Rachisan AL, Gach P, Pico H, Sorensen C, Bonello B *et al*. Detection of pulmonary and coronary artery anomalies in tetralogy of Fallot using non-ECG-gated CT angiography. *Diagn Interv Imaging* 2016;**97**:543–8.
65. Lapiere C, Dubois J, Rypens F, Raboisson MJ, Déry J. Tetralogy of Fallot: pre-operative assessment with MR and CT imaging. *Diagn Interv Imaging* 2016;**97**: 531–41.
66. Cohen MS, Eidem BW, Cetta F, Fogel MA, Frommelt PC, Ganame J *et al*. Multimodality imaging guidelines of patients with transposition of the great arteries: a report from the American Society of Echocardiography developed in collaboration with the Society for Cardiovascular Magnetic Resonance and the Society of Cardiovascular Computed Tomography. *J Am Soc Echocardiogr* 2016; **29**:571–621.
67. Cromme-Dijkhuis AH, Leeuwen MS-V, Bink-Boekens MTE, Talsma M. The value of 2-D Doppler echocardiography in the evaluation of asymptomatic patients with Mustard operation for transposition of the great arteries. *Eur Heart J* 1991;**12**:1308–10.
68. Iriart X, Horovitz A, van Geldorp IE, Barnetche T, Lederlin M, De Guillebon M *et al*. The role of echocardiography in the assessment of right ventricular systolic function in patients with transposition of the great arteries and atrial redirection. *Arch Cardiovasc Dis* 2012;**105**:432–41.
69. De Pasquale G, Bonassin Tempesta F, Lopes BS, Babic D, Oxenius A, Seeliger T *et al*. High prevalence of baffle leaks in adults after atrial switch operations for transposition of the great arteries. *Eur Heart J Cardiovasc Imaging* 2017;**18**: 531–5.
70. Plymen CM, Sado DM, Taylor AM, Bolger AP, Lambiase PD, Hughes M *et al*. Diffuse myocardial fibrosis in the systemic right ventricle of patients late after Mustard or Senning surgery: an equilibrium contrast cardiovascular magnetic resonance study. *Eur Heart J Cardiovasc Imaging* 2013;**14**:963–8.
71. Rydman R, Gatzoulis MA, Ho SY, Ernst S, Swan L, Li W *et al*. Systemic right ventricular fibrosis detected by cardiovascular magnetic resonance is associated with clinical outcome, mainly new-onset atrial arrhythmia, in patients after atrial redirection surgery for transposition of the great arteries. *Circ Cardiovasc Imaging* 2015;**8**:pii: e002628.
72. Giardini A, Lovato L, Donti A, Formigari R, Oppido G, Gargiulo G *et al*. Relation between right ventricular structural alterations and markers of adverse clinical outcome in adults with systemic right ventricle and either congenital complete (after Senning operation) or congenitally corrected transposition of the great arteries. *Am J Cardiol* 2006;**98**:1277–82.
73. Colan SD, Boutin C, Castañeda AR, Wernovsky G. Status of the left ventricle after arterial switch operation for transposition of the great arteries. Hemodynamic and echocardiographic evaluation. *J Thorac Cardiovasc Surg* 1995;**109**:311–21.
74. Di Salvo G, Bulbul Z, Pergola V, Issa Z, Siblini G, Muhanna N *et al*. Gothic aortic arch and cardiac mechanics in young patients after arterial switch operation for d-transposition of the great arteries. *Int J Cardiol* 2017;**241**:163–7.
75. Amoozgar H, Salamina S, Amirghofran AA, Cheriki S, Borzoev M, Ajami G *et al*. Evaluation of cardiac and valvular function after arterial switch operation: a midterm follow-up. *Int Cardiovasc Res J* 2013;**7**:83–9.
76. Losay J, Touchot A, Serraf A, Litvinova A, Lambert V, Piot JD *et al*. Late outcome after arterial switch operation for transposition of the great arteries. *Circulation* 2001;**104**:1121–6.
77. Weindling SN, Wernovsky G, Colan SD, Parker JA, Boutin C, Mone SM *et al*. Myocardial perfusion, function and exercise tolerance after the arterial switch operation. *J Am Coll Cardiol* 1994;**23**:424–33.
78. Marino BS, Wernovsky G, McElhinney DB, Jawad A, Krieb DL, Mantel SF *et al*. Neo-aortic valvar function after the arterial switch. *Cardiol Young* 2006;**16**: 481–9.
79. Morgan CT, Mertens L, Grotenhuis H, Yoo SJ, Seed M, Grosse-Wortmann L. Understanding the mechanism for branch pulmonary artery stenosis after the arterial switch operation for transposition of the great arteries. *Eur Heart J Cardiovasc Imaging* 2017;**18**:180–5.
80. Voges I, Jerosch-Herold M, Hedderich J, Hart C, Petko C, Scheewe J *et al*. Implications of early aortic stiffening in patients with transposition of the great arteries after arterial switch operation. *Circ Cardiovasc Imaging* 2013;**6**:245–53.
81. Shepard CW, Germanakis I, White MT, Powell AJ, Co-Vu J, Geva T. Cardiovascular magnetic resonance findings late after the arterial switch operation. *Circ Cardiovasc Imaging* 2016;**9**:pii: e004618.
82. Ou P, Celermajer DS, Marini D, Agnoletti G, Vouhé P, Brunelle F *et al*. Safety and accuracy of 64-slice computed tomography coronary angiography in children after the arterial switch operation for transposition of the great arteries. *JACC Cardiovasc Imaging* 2008;**1**:331–9.
83. Filippov AA, del Nido PJ, Vasilyev NV. Management of systemic right ventricular failure in patients with congenitally corrected transposition of the great arteries. *Circulation* 2016;**134**:1293–302.
84. Kral Kollars CA, Gelehrter S, Bove EL, Ensing G. Effects of morphologic left ventricular pressure on right ventricular geometry and tricuspid valve regurgitation in patients with congenitally corrected transposition of the great arteries. *Am J Cardiol* 2010;**105**:735–9.
85. Dobson R, Danton M, Nicola W, Hamish W. The natural and unnatural history of the systemic right ventricle in adult survivors. *J Thorac Cardiovasc Surg* 2013; **145**:1493–501.
86. Warnes CA, Williams RG, Bashore TM, Child JS, Connolly HM, Dearani JA *et al*. American College of Cardiology; American Heart Association Task Force on Practice Guidelines (Writing Committee to Develop Guidelines on the Management of Adults With Congenital Heart Disease); American Society of Echocardiography; Heart Rhythm Society; International Society for Adult Congenital Heart Disease; Society for Cardiovascular Angiography and Interventions; Society of Thoracic Surgeons. ACC/AHA 2008 guidelines for the management of adults with congenital heart disease: a report of the American College of Cardiology/American Heart Association Task Force on Practice Guidelines (Writing Committee to Develop Guidelines on the Management of Adults With Congenital Heart Disease). Developed in Collaboration With the American Society of Echocardiography, Heart Rhythm Society, International Society for Adult Congenital Heart Disease, Society for Cardiovascular Angiography and Interventions, and Society of Thoracic Surgeons. *J Am Coll Cardiol* 2008;**2**:e143–263.
87. Kowalik E, Mazurkiewicz Ł, Kowalski M, Klisiewicz A, Marczak M, Hoffman P. Echocardiography vs magnetic resonance imaging in assessing ventricular function and systemic atrioventricular valve status in adults with congenitally corrected transposition of the great arteries. *Echocardiography* 2016;**33**:1697–702.
88. van Son JAM, Danielson GK, Huhta JC, Warnes CA, Edwards WD, Schaff HV *et al*. Late results of systemic atrioventricular valve replacement in corrected transposition. *J Thorac Cardiovasc Surg* 1995;**109**:642–52.
89. Di Salvo G, Pacileo G, Rea A, Limongelli G, Baldini L, D'Andrea A *et al*. Transverse strain predicts exercise capacity in systemic right ventricle patients. *Int J Cardiol* 2010;**145**:193–6.
90. Kowalik E, Klisiewicz A, Rybicka J, Biernacka EK, Hoffman P. High sensitivity cardiac troponin T and systemic right ventricular function in adults with congenitally corrected transposition of the great arteries. *Int J Cardiol* 2017;**241**: 168–72.
91. Eindhoven JA, Menting ME, van den Bosch AE, McGhie JS, Witsenburg M, Cuypers JA *et al*. Quantitative assessment of systolic right ventricular function using myocardial deformation in patients with a systemic right ventricle. *Eur Heart J Cardiovasc Imaging* 2015;**16**:380–8.
92. Goudar SP, Shah SS, Shirali GS. Echocardiography of coarctation of the aorta, aortic arch hypoplasia, and arch interruption: strategies for evaluation of the aortic arch. *Cardiol Young* 2016;**26**:1553–62.
93. Ou P, Celermajer DS, Mousseaux E, Giron A, Aggoun Y, Szezepanski I *et al*. Vascular remodeling after “successful” repair of coarctation: impact of aortic arch geometry. *J Am Coll Cardiol* 2007;**49**:883–90.
94. Marx GR. Repaired aortic coarctation in adults: not a “simple” congenital heart defect. *J Am Coll Cardiol* 2000;**35**:1003–6.
95. Toro-Salazar OH, Steinberger J, Thomas WV, Rocchini AP, Carpenter B, Moller JH. Long-term follow-up of patients after coarctation of the aorta repair. *Am J Cardiol* 2002;**89**:541–7.
96. Cohen M, Fuster V, Steele PM, Driscoll D, McGoon DC. Coarctation of the aorta. Long-term follow-up and prediction of outcome after surgical correction. *Circulation* 1989;**80**:840–5.
97. Vriend JW, Mulder BJ. Late complications in patients after repair of aortic coarctation: implications for management. *Int J Cardiol* 2005;**101**:399–406.
98. Swan L, Wilson N, Houston AB, Doig W, Pollock JC, Hillis WS. The long-term management of the patient with an aortic coarctation repair. *Eur Heart J* 1998; **19**:382–6.
99. Tan JL, Babu-Narayan SV, Henein MY, Mullen M, Li W. Doppler echocardiographic profile and indexes in the evaluation of aortic coarctation in patients before and after stenting. *J Am Coll Cardiol* 2005;**46**:1045–53.
100. Houston AB, Simpson IA, Pollock JC, Jamieson MP, Doig WB, Coleman EN. Doppler ultrasound in the assessment of severity of coarctation of the aorta and interruption of the aortic arch. *Br Heart J* 1987;**57**:38–43.
101. Chan KC, Dickinson DF, Wharton GA, Gibbs JL. Continuous wave Doppler echocardiography after surgical repair of coarctation of the aorta. *Br Heart J* 1992;**68**:192–4.
102. Carvalho JS, Redington AN, Shinebourne EA, Rigby MI, Gibson D. Continuous wave Doppler echocardiography and coarctation of the aorta: gradients and flow patterns in the assessment of severity. *Br Heart J* 1990;**64**:133–7.
103. Di Salvo G, Pacileo G, Limongelli G, Verrengia M, Rea A, Santoro G *et al*. Abnormal regional myocardial deformation properties and increased aortic stiffness in normotensive patients with aortic coarctation despite successful correction: an ABPM, standard echocardiography and strain rate imaging study. *Clin Sci* 2007;**113**:259–66.

104. Therrien J, Thorne SA, Wright A, Kilner PJ, Somerville J. Repaired coarctation: a "cost-effective" approach to identify complications in adults. *J Am Coll Cardiol* 2000;**35**:997–1002.
105. Babu-Narayan SV, Mohiaddin RH, Cannell TM, Muhll IV, Dimopoulos K, Mullen MJ. Cardiovascular changes after transcatheter endovascular stenting of adult aortic coarctation. *Int J Cardiol* 2011;**149**:157–63.
106. Konen E, Merchant N, Provost Y, McLaughlin PR, Crossin J, Paul NS. Coarctation of the aorta before and after correction: the role of cardiovascular MRI. *AJR Am J Roentgenol* 2004;**182**:1333–9.
107. Valsangiacomo Büchel ER, DiBernardo S, Bauersfeld U, Berger F. Contrast-enhanced magnetic resonance angiography of the great arteries in patients with congenital heart disease: an accurate tool for planning catheter-guided interventions. *Int J Cardiovasc Imaging* 2005;**21**:313–22.
108. Valsangiacomo Buechel ER, Grosse-Wortmann L, Fratz S, Eichhorn J, Sarikouch S, Greil GF et al. Indications for cardiovascular magnetic resonance in children with congenital and acquired heart disease: an expert consensus paper of the Imaging Working Group of the AEPC and the Cardiovascular Magnetic Resonance Section of the EACVI. *Eur Heart J Cardiovasc Imaging* 2015;**16**:281–97.
109. Valverde I, Gomez G, Coserria JF, Suarez-Mejias C, Uribe S, Sotelo J et al. 3D printed models for planning endovascular stenting in transverse aortic arch hypoplasia. *Catheter Cardiovasc Intervent* 2015;**85**:1006–12.
110. Hope MD, Hope TA, Crook SE, Ordovas KG, Urbana TH, Alley MT et al. 4D flow CMR in assessment of valve-related ascending aortic disease. *JACC Cardiovasc Imaging* 2011;**4**:781–7.
111. Frydrychowicz A, Arnold R, Hirtler D, Schlensak C, Stalder AF, Hennig J et al. Multidirectional flow analysis by cardiovascular magnetic resonance in aneurysm development following repair of aortic coarctation. *J Cardiovasc Magn Reson* 2008;**10**:30.
112. Hauser JA, Taylor AM, Pandya B. How to image the adult patient with Fontan circulation. *Circ Cardiovasc Imaging* 2017;**10**:pii: e004273.
113. Schlangen J, Petko C, Hansen JH, Michel M, Hart C, Uebing A et al. Two dimensional global longitudinal strain rate is a preload independent index of systemic right ventricular contractility in hypoplastic left heart syndrome patients after Fontan operation. *Circ Cardiovasc Imaging* 2014;**7**:880–6.
114. Tham EB, Smallhorn JF, Kaneko S, Valiani S, Myers KA, Colen TM et al. Insights into the evolution of myocardial dysfunction in the functionally single right ventricle between staged palliations using speckle-tracking echocardiography. *J Am Soc Echocardiogr* 2014;**27**:314–22.
115. Cordina R, von Klemperer K, Kempny A, West C, Senior R, Celermajer DS et al. Echocardiographic predictors of mortality in adults with a Fontan circulation. *JACC Cardiovasc Imaging* 2016;**12**:pii: S1936-878X(16)30126-7.
116. Soriano BD, Hoch M, Ithuralde A, Geva T, Powell AJ, Kussman BD et al. Matrix-array 3-dimensional echocardiographic assessment of volumes, mass, and ejection fraction in young pediatric patients with a functional single ventricle: a comparison study with cardiac magnetic resonance. *Circulation* 2008;**117**:1842–8.
117. Olivier M, O'leary PW, Pankratz VS, Lohse CM, Walsh BE, Tajik AJ et al. Serial Doppler assessment of diastolic function before and after Fontan operation. *J Am Soc Echocardiogr* 2003;**16**:1136–43.
118. Edwards RM, Reddy GP, Kicska G. The functional single ventricle: how imaging guides treatment. *Clin Imaging* 2016;**40**:1146–55.
119. Rathod RH, Prakash A, Powell AJ, Geva T. Myocardial fibrosis identified by cardiac magnetic resonance late gadolinium enhancement is associated with adverse ventricular mechanics and ventricular tachycardia late after Fontan operation. *J Am Coll Cardiol* 2010;**55**:1721–8.
120. Poterucha JT, Johnson JN, Qureshi MY, O'Leary PW, Kamath PS, Lennon RJ et al. Magnetic resonance elastography: a novel technique for the detection of hepatic fibrosis and hepatocellular carcinoma after the Fontan operation. *Mayo Clin Proc* 2015;**90**:882–94.
121. Wu FM, Opatowsky AR, Raza R, Harney S, Ukomadu C, Landzberg MJ et al. Transient elastography may identify Fontan patients with unfavorable hemodynamics and advanced hepatic fibrosis. *Congenit Heart Dis* 2014;**9**: 438–47.
122. Dori Y, Keller MS, Rychik J, Itkin M. Successful treatment of plastic bronchitis by selective lymphatic embolization in a Fontan patient. *Pediatrics* 2014;**134**: e590–5.
123. Rychik J. Protein-losing enteropathy after Fontan operation. *Congenit Heart Dis* 2007;**2**:288–300.