

Shaken baby syndrome: review of a series of 24 cases



S. Pannizzotto(1), Z. Depuis (1), N. Abiuso (2), F. Del Rio (2)
(1) Departement of Pediatrics, CHU Liege, Belgium
(2) Hôpital de la Citadelle



Introduction

Review of 24 cases of children with a diagnosis of shaken baby syndrome admitted over a period of 12 years.

Inclusion criteria : diagnostic criteria used in the literature.

Multifocal subdural hematomas (SDH) associated or not with retinal hemorrhages
or

Unifocal subdural hematoma associated with retinal hemorrhages.

All clinical situations were taken care of in a multidisciplinary medical and psychosocial way.

Case presentation

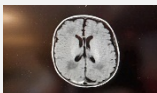
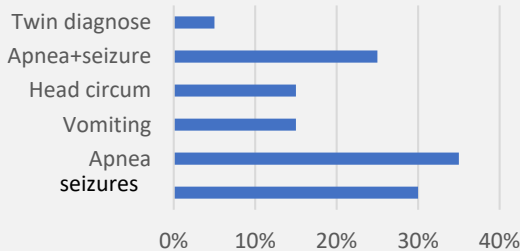
N = 24

Sex Ratio 1 - Average age 3.5 months

Neonatal factors:

25% (n=6) had a twin
37% stay in neonatology
16% premature < 36 weeks gestational age

Symptoms



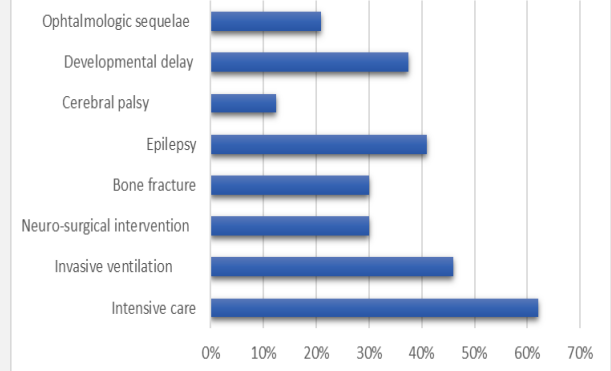
Clinical lesions:



SDH : Plurifocal → + Retinal hemorrhages 60%
Retinal hemorrhages 34%
Unifocal + retinal hemorrhages 6%

Evolution

Evolution and sequelae



Psychosocial factors

Families from all socio-cultural backgrounds

Known author during hospitalization 29%



■ Mother ■ Father

Report to the youth assistance services with medico-psycho-social assessment 100%

Placement outside the family environment 37,5%

Conclusion

Shaken baby syndrome is a complex pathology that is related to child abuse. The clinical and psychological consequences in the short and long term are considerable. It is necessary to offer somatic but also psycho-social care.