



Fossiles en Ville


Une balade à Sprimont


Prof. Valentin Fischer
Réjouissances




FOSSILES EN VILLE



Amsterdam 

Remouchamps 

Trieste 

Annecy 

Fossiles en Ville

Balade à Sprimont

Pourquoi des fossiles ici?

Comment les trouver?

Fossiles en Ville

Balade à Sprimont

- Pourquoi des fossiles ici?

Comment les trouver?

A close-up photograph of dark grey granite tiles. The tiles are rectangular and arranged in a grid pattern, separated by dark grey grout. The granite surface has a natural, slightly textured appearance with some lighter grey veins and small pits. The lighting is even, highlighting the texture of the stone.

**Le “petit granit” s’est formé il y a
350 millions d’années!**

pierrebleuebelge.be



Sprimont

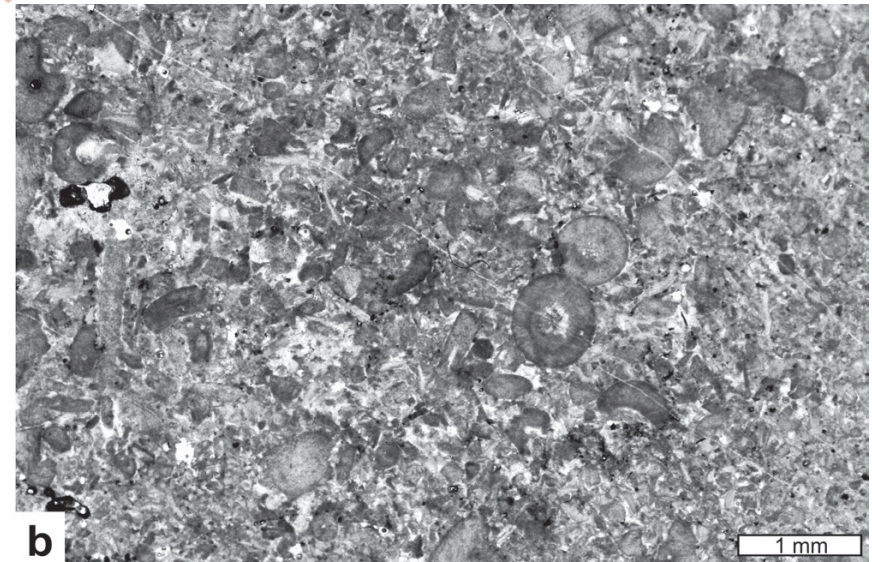
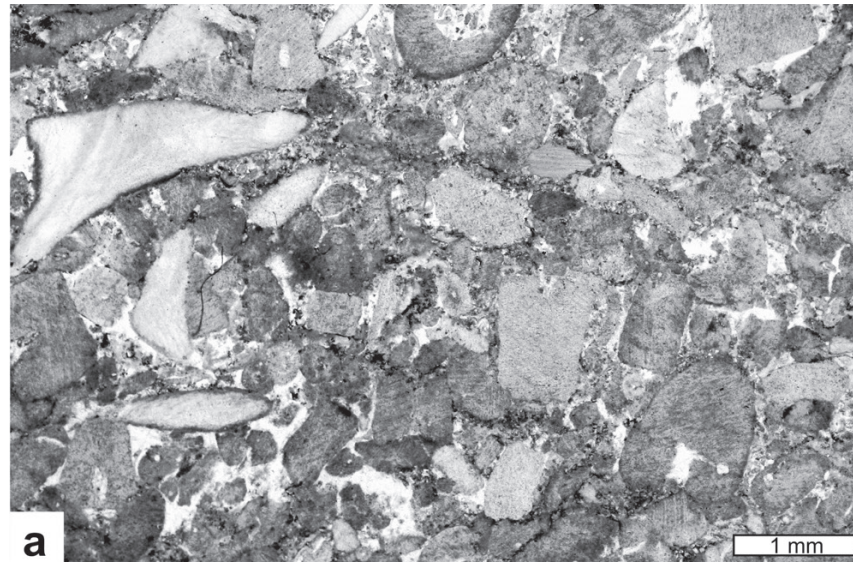
Laurussia

GONDWANA



340 Ma Mississippien
© CP Geosystems 2014

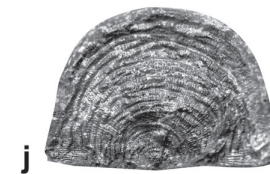
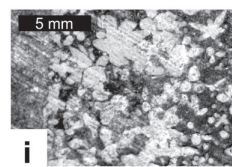
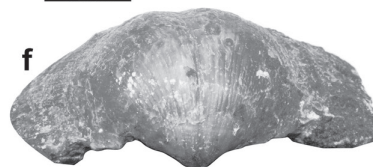
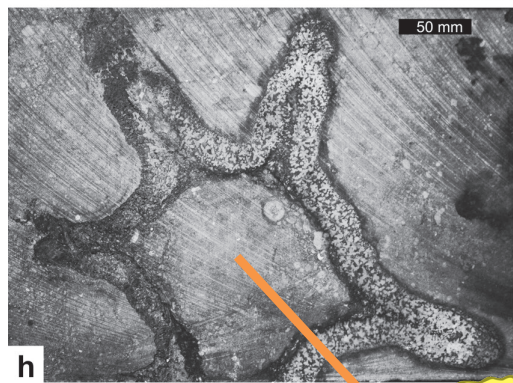
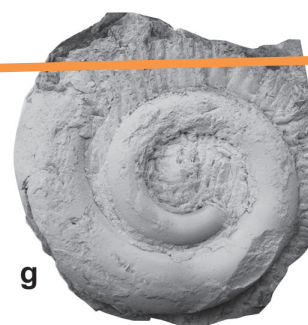
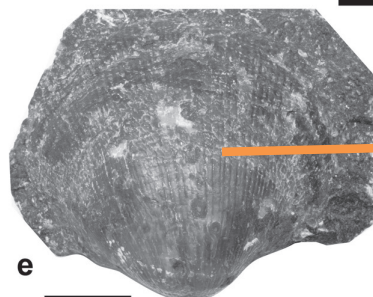
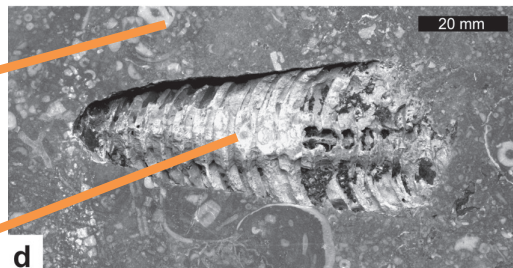
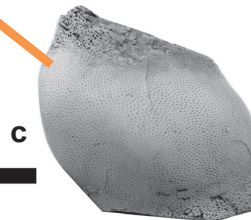
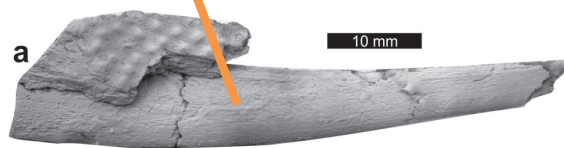
Des accumulations
de débris par des
tempêtes 🌊
parfois violentes



Debout & Denayer 2018
Geologica Belgica

**Un écosystème entier est préservé
sous vos pieds!**





Fossiles en Ville

Balade à Sprimont

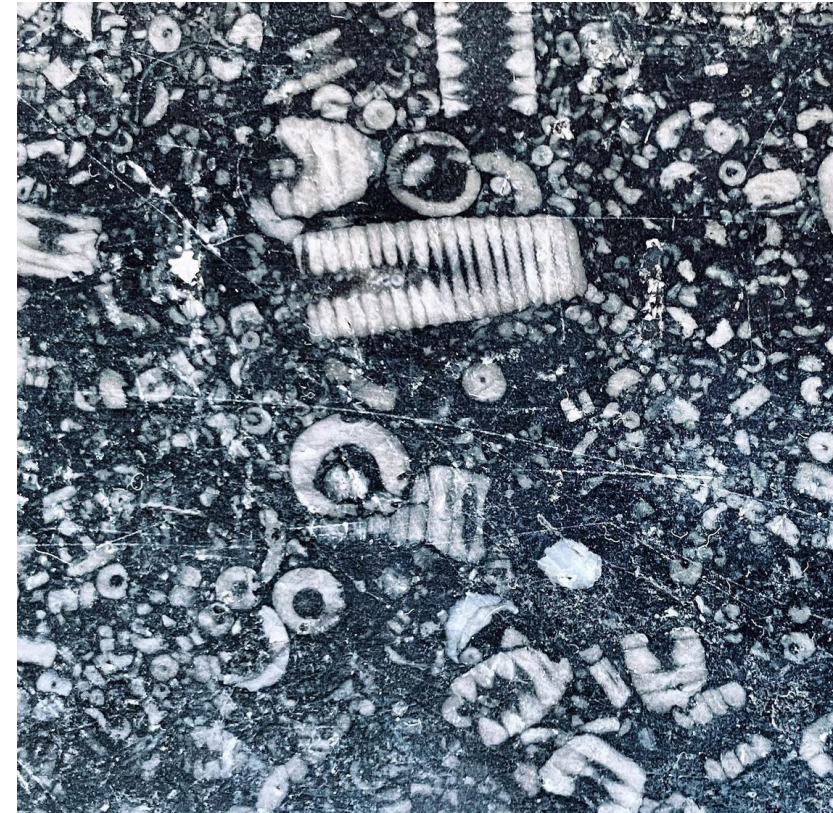
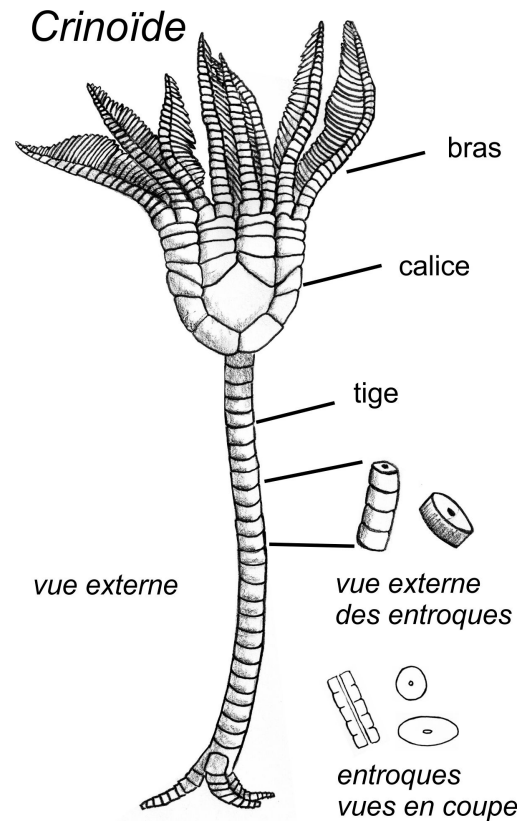
Pourquoi des fossiles ici?

- Comment les trouver?

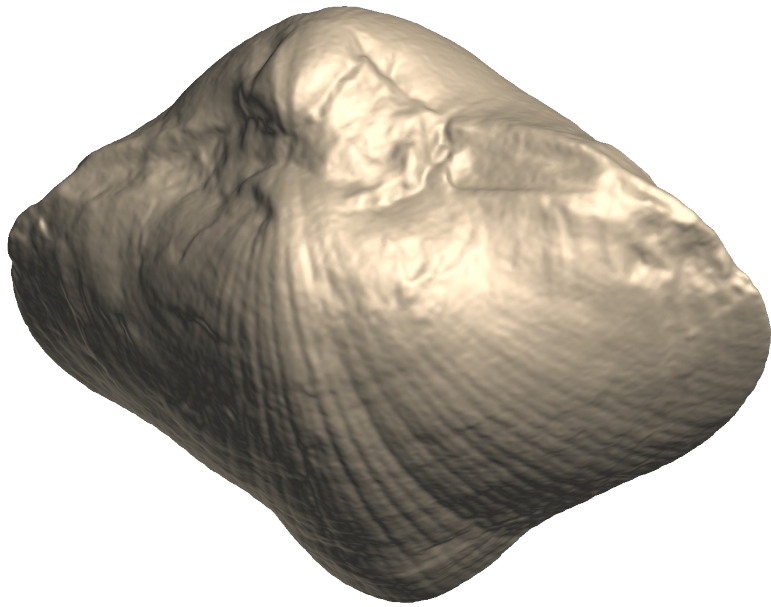
Les crinoïdes, des échinodermes avec tige et bras



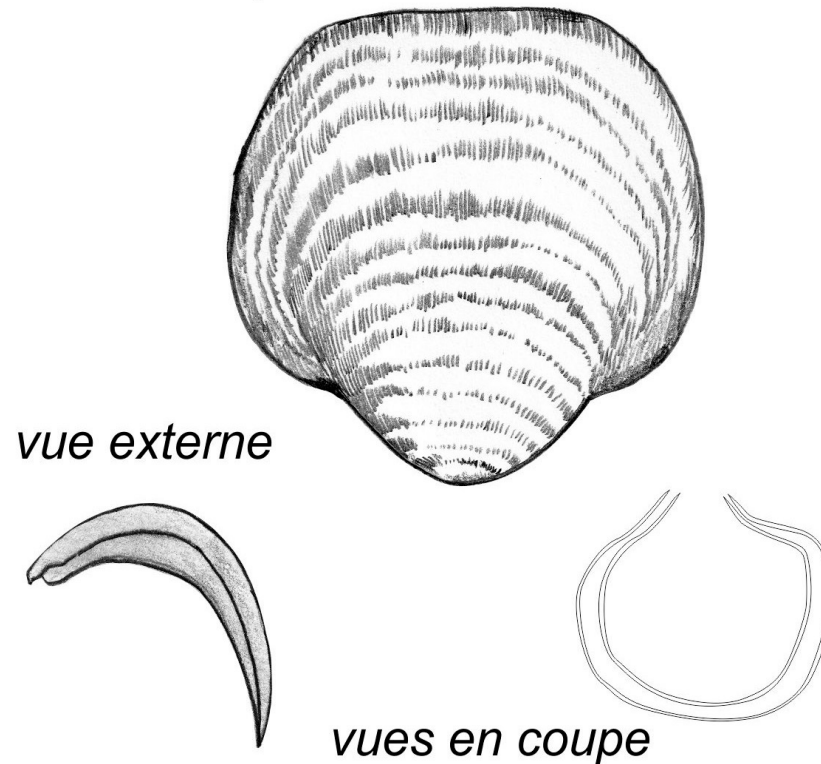
Un crinoïde actuel



Les brachiopodes, des coquillages filtreurs



Palaeochoeristites



vue externe

vues en coupe

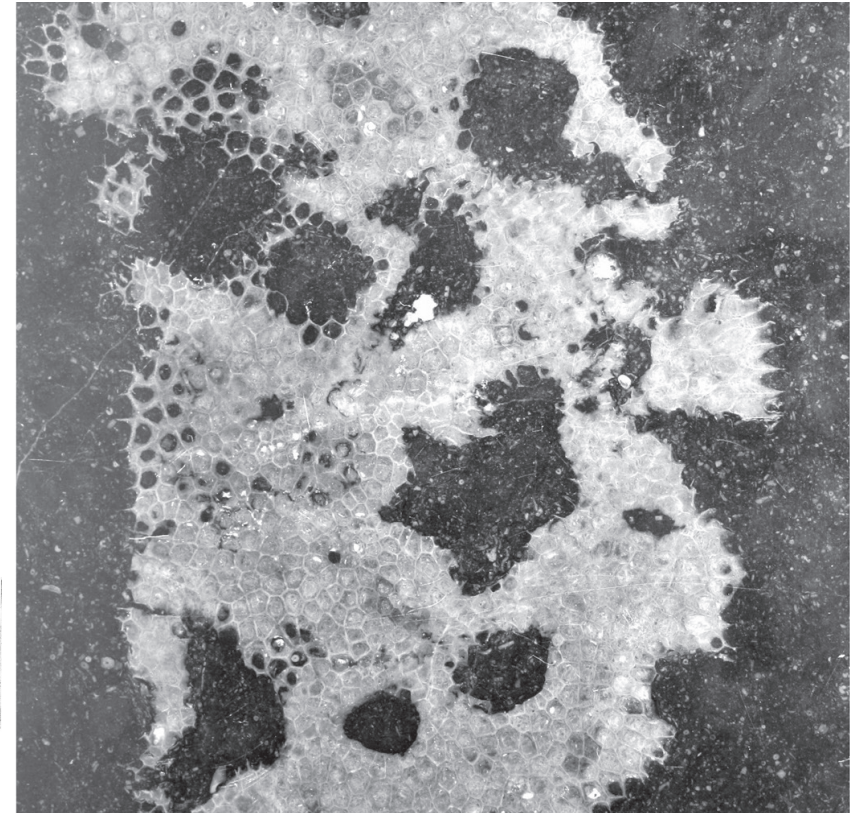
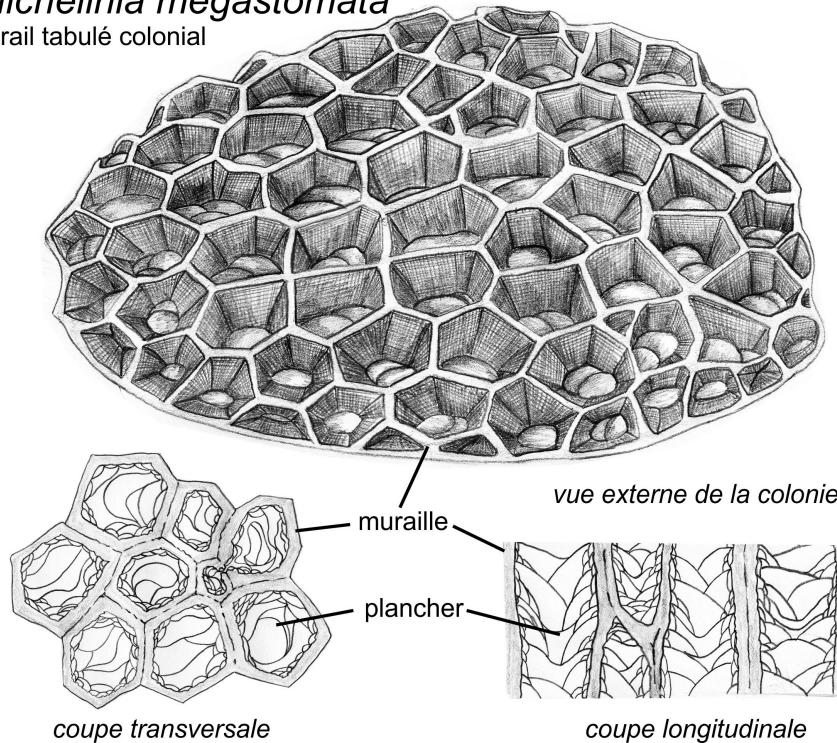


D'anciens coraux, coloniaux ou solitaires



Michelinia

Michelinia megastomata
corail tabulé colonial

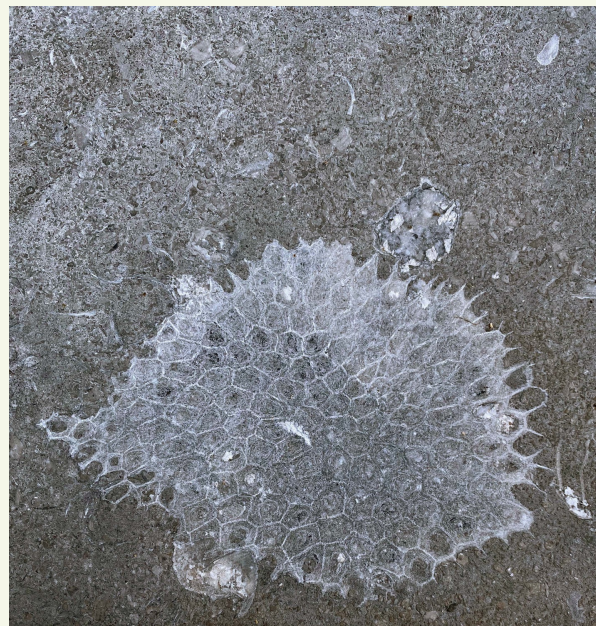




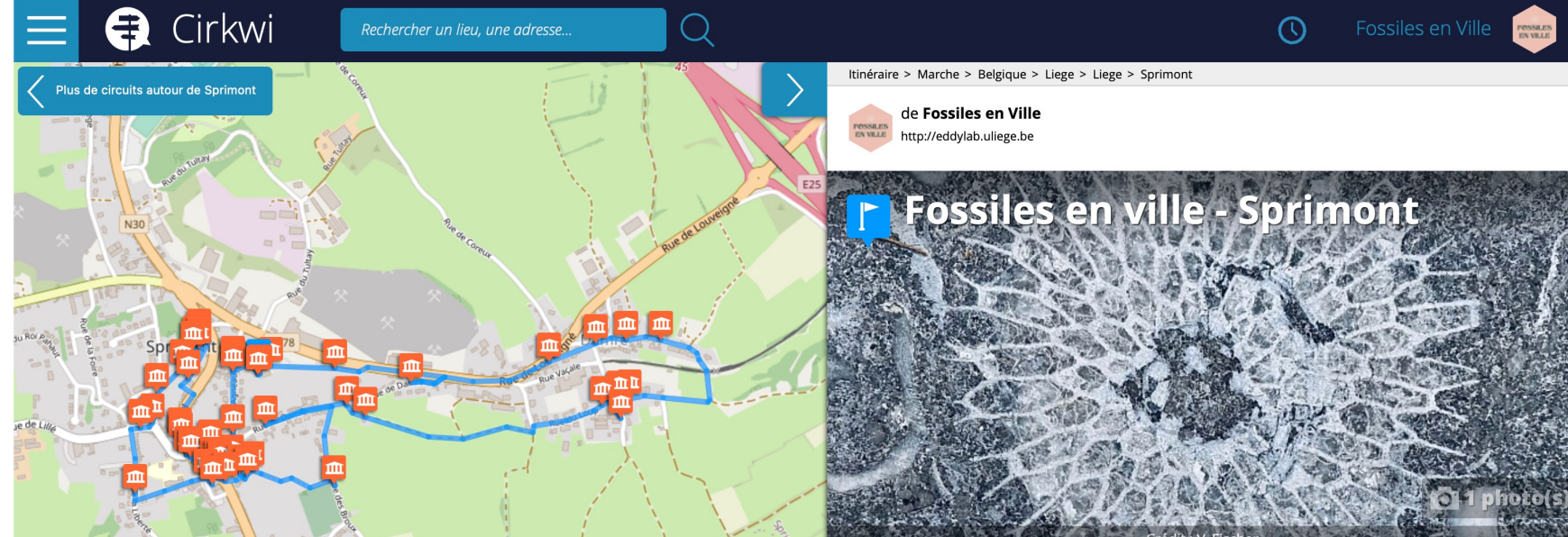
FOSSILES EN VILLE

BALADE N°16

Balade autour de Sprimont



Le circuit Sprimont (via l'app. Cirkwi)



Prof. Valentin Fischer,
Dr. Julien Denayer,
Réjouissances

 v.fischer@uliege.be

 @FossilesV

 eddylab.uliege.be

