



Potential Diagnostic Value of the Peripheral Blood Mononuclear Cell Transcriptome From Cattle With Bovine Tuberculosis

OPEN ACCESS

Edited by:

Jesus Hernandez,
Centro de Investigación en
Alimentación y Desarrollo
(CIAD), Mexico

Reviewed by:

Kieran G. Meade,
Teagasc Food Research
Centre, Ireland
Fabiana Bigi,
National Agricultural Technology
Institute, Argentina

*Correspondence:

Jiabo Ding
dingjiabo@126.com
Lin Jiang
jianglin@caas.cn
Ting Xin
xinting_xt@163.com

†These authors have contributed
equally to this work and share first
authorship

Specialty section:

This article was submitted to
Veterinary Infectious Diseases,
a section of the journal
Frontiers in Veterinary Science

Received: 17 February 2020

Accepted: 29 April 2020

Published: 27 May 2020

Citation:

Fang L, Lin W, Jia H, Gao X, Sui X,
Guo X, Hou S, Jiang Y, Zhu L, Zhu H,
Ding J, Jiang L and Xin T (2020)
Potential Diagnostic Value of the
Peripheral Blood Mononuclear Cell
Transcriptome From Cattle With
Bovine Tuberculosis.
Front. Vet. Sci. 7:295.
doi: 10.3389/fvets.2020.00295

Lichun Fang^{1†}, Weidong Lin^{1,2†}, Hong Jia^{1†}, Xintao Gao¹, Xiukun Sui¹, Xiaoyu Guo¹, Shaohua Hou¹, Yitong Jiang¹, Liangquan Zhu³, Hongfei Zhu¹, Jiabo Ding^{3*}, Lin Jiang^{1*} and Ting Xin^{1*}

¹ Institute of Animal Sciences (IAS), Chinese Academy of Agricultural Sciences (CAAS), Beijing, China, ² Molecular and Cellular Biology, Gembloux Agro-Bio Tech University of Liège (ULg), Gembloux, Belgium, ³ Department of Inspection Technology Research, China Institute of Veterinary Drugs Control, Beijing, China

Bovine tuberculosis (bTB) is a chronic disease of cattle caused by *Mycobacterium bovis*. During early-stage infection, *M. bovis*-infected cattle shed mycobacteria through nasal secretions, which can be detected via nested-polymerase chain reaction (PCR) experiments. Little research has focused on immune responses in nested PCR-positive (bTB PCR-P) or nested PCR-negative (bTB PCR-N) *M. bovis*-infected cattle. Here, we investigated the transcriptomes of peripheral blood mononuclear cells (PBMCs), with or without stimulation by purified protein derivative of bovine tuberculin (PPD-B), among bTB PCR-P, bTB PCR-N, and healthy cattle using RNA-Seq. We also explored the potential value of PBMC transcripts as novel biomarkers for diagnosing bTB. Numerous differentially expressed genes were identified following pair-wise comparison of different groups, with or without PPD-B stimulation (adjusted $p < 0.05$). Compared with healthy cattle, bTB PCR-P, and bTB PCR-N cattle shared 5 significantly dysregulated biological pathways, including Cytokine-cytokine receptor interaction, NF-kappa B signaling pathway, Hematopoietic cell lineage, Osteoclast differentiation and HTLV-I infection. Notably, dysregulated biological pathways of bTB PCR-P and bTB PCR-N cattle were associated with cell death and phagocytosis, respectively. Lymphotoxin alpha and interleukin-8 could potentially differentiate *M. bovis*-infected and healthy cattle upon stimulation with PPD-B, with area-under-the-curve (AUC) values of 0.9991 and 0.9343, respectively. B cell lymphoma 2 and chitinase 3-like 1 might enable differentiation between bTB PCR-P and bTB PCR-N upon stimulation with PPD-B, with AUC values of 0.9100 and 0.8893, respectively. Thus, the PBMC transcriptome revealed the immune responses in *M. bovis*-infected cattle (bTB PCR-P and bTB PCR-N) and may provide a novel sight in bTB diagnosis.

Keywords: bovie tuberculosis, PBMC, transcriptome, immune response, biomarker, diagnosis

INTRODUCTION

Bovine tuberculosis (bTB) is a serious disease in cattle populations that is primarily caused by *Mycobacterium bovis* infection (1, 2). *M. bovis* infects a wide range of hosts including wild animals and humans (3, 4) and is a slow-growing pathogen that causes progressive disease (5). Despite intensive worldwide efforts, bTB remains a huge burden and threat to livestock, with more than 50 million cattle infected worldwide resulting in ~3 billion dollars in economic loss annually (6).

Currently, bTB control and eradication is mainly based on the test-and-slaughter strategy, which involves screening cattle using the tuberculin skin test (TST) alone or in combination with interferon gamma (IFN- γ)-release assay (IGRA). Cattle with positive TST and/or IGRA test results are slaughtered. However, due to the limitations of these tests and the significant economic burden produced by this eradication strategy, *M. bovis* has escaped eradication (7). In humans, based on symptoms, pathology, and microbiological evidence of infection in sputum and/or a nucleic-acid-amplification test (8), tuberculosis (TB) was divided into two states (active and latent infection). However, traditional bTB-diagnosis methods (TST and IGRA) cannot distinguish the stages of bTB progression. Costello reported that at least 15% *M. bovis*-infected cattle shed *Mycobacterium* (9), mainly at an early stage in infection (10). Previously, a nested PCR assay based on *mpb70* was established to detect mycobacteria in nasal exudates and milk (9). Prior research confirmed that about 23.18–87.5% of *M. bovis*-infected cattle were nested PCR-positive (PCR-P) (11, 12). However, few studies have focused on differing immune responses between *M. bovis*-infected cattle determined PCR positive and negative.

Blood transcriptomic profiling has been widely used to examine host-immune responses to infection based on an unbiased analysis and comprehensive overview (13). Recently, in human TB, several blood transcriptomic signatures have been identified to differentiate active TB patients from healthy people (14, 15). A better understanding of the immune response between the proposed states (bTB PCR-P and bTB PCR-N) and earlier screening for disease-specific biomarkers associated with bTB progression would greatly advance bTB diagnostics.

Here, we investigated peripheral blood mononuclear cell (PBMC) transcriptomes in naturally *M. bovis*-infected cattle and evaluated the diagnostic value of PBMC transcripts. PBMCs isolated from cattle with different infection statuses (i.e., bTB PCR-P, bTB PCR-N, and healthy cattle) were treated with bovine purified protein derivative of bovine tuberculin (PPD-B) or phosphate-buffered saline (PBS) for 6 h. By RNA-Seq, we compared the transcriptomes of PPD-B-stimulated and -unstimulated (PBS-treated) PBMCs between the three

groups. Finally, several potential biomarkers were validated for differentiating bTB PCR-P and bTB PCR-N or infected cattle and healthy cattle, as outlined in **Figure 1**.

MATERIALS AND METHODS

Animals

Holstein cattle (368 total) were chosen from herds with a recent history of *M. bovis* infection ($n = 243$) and that were negative for *M. bovis* ($n = 125$). bTB was detected by TST and IGRA testing, as we described previously (16). Nasal swab samples were analyzed by nested PCR to amplify a specific *M. bovis* fragment to further characterize the infection status. Briefly, a single PCR was run to amplify a segment (372 bp) of the *mpb70* gene with the primers M70F, 5'-GAACAATCCGGAGTTGACAA-3', and M70R, 5'-AGCACGCTGTCAATCATGTA-3'. Then, a nested PCR was run using 1 μ l of the previous reaction mixture to amplify a 208-bp fragment within the 372-bp region of the *mpb70* gene with the primers M22F, 5'-GCTGACGGCTGCACTGTGCGGC-3', and M22R, 5'-CGTTGGCCGGGCTGGTTTGGCC-3' (12). Sera from the selected cattle were tested for *M. avium* subsp. *paratuberculosis*, brucellosis, and bovine viral diarrhea virus antibody production.

PBMC Preparation, Stimulation, and RNA Extraction

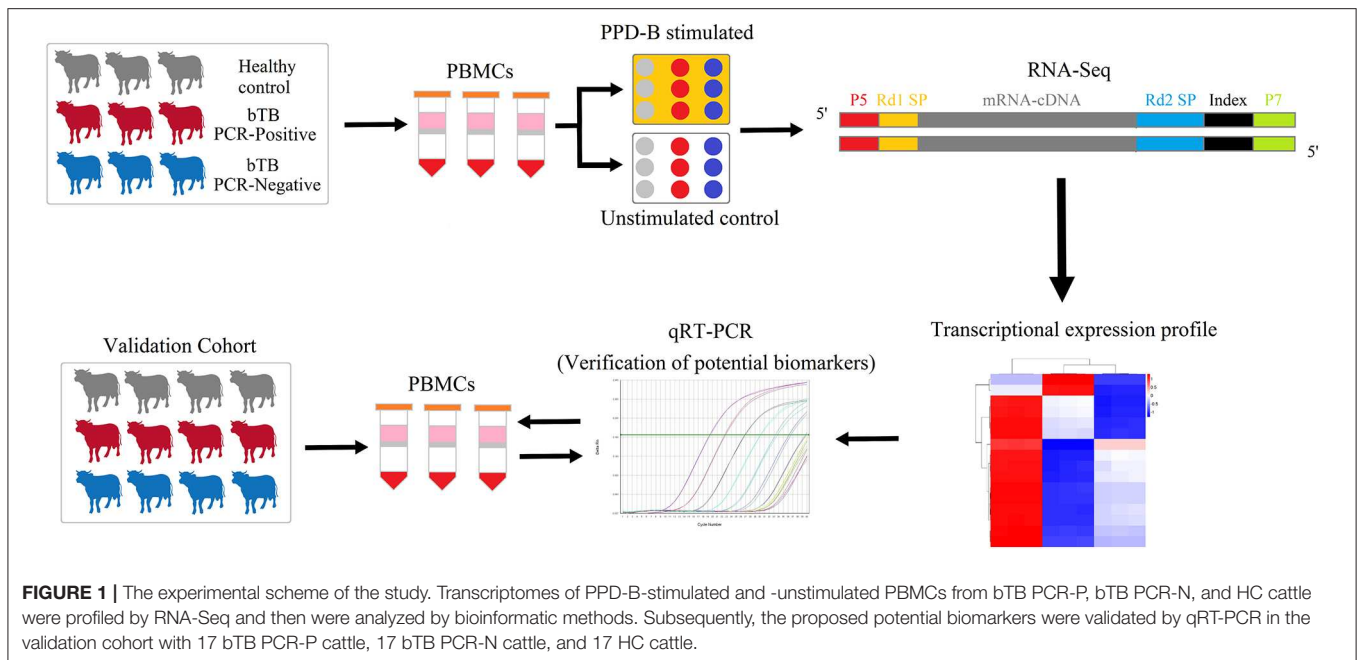
About 50 ml of whole blood with anticoagulant (heparin) was collected aseptically from each animal. PBMCs were isolated using bovine lymphocyte-separation medium (Solarbio, China) by density-gradient centrifugation, per the manufacturer's instructions. Red blood cells (RBC) were removed by RBC lysis, the cells were washed by PBS for three times. And then cells from each animal were counted and seeded into 12-well tissue culture plates at 5×10^6 cells/ml OpTmizer™ T-Cell Expansion SFM (Gibco) containing 1% L-Glutamine (Gibco) and 1% penicillin-streptomycin (Sigma-Aldrich, Ltd.). Subsequently, the PBMCs were stimulated with 300 IU PPD-B (3,000 IU/mL, Prionics AG, Schlieren, Switzerland); unstimulated PBMCs (PBS-treated) from the same cattle were run as a negative control. Subsequently, PBMCs were incubated at 37°C with 5% CO₂, harvested for treatment 6 h post-stimulation. Harvested cells were washed by ice-cold PBS for three times and then stored at -80°C in TRIzol reagent (Invitrogen, CA, USA) until further use.

Total RNA was extracted using the TRIzol reagent (Invitrogen), following the manufacturer's instructions. The time frame from blood collection to RNA extraction was within 24 h. The quantity and quality of RNA samples were checked using a NanoDrop 2000 spectrophotometer (Thermo Fisher Scientific, Waltham, MA, USA) and an Agilent 2100 Bioanalyzer with the RNA 6000 Nano LabChip Kit (Agilent, Santa Clara, CA, USA). All total RNA samples had an RNA integrity number >7.0, an A260/280 ratio >1.8, and an RNA quantity > 3.0 μ g.

RNA-Seq Library Preparation and Sequencing

A total 18 RNA-Seq libraries were prepared which comprised PPD-B stimulated and unstimulated across 9 cattle in different

Abbreviations: AUC, area under the curve; BCL-2, B cell lymphoma 2; bTB, bovine tuberculosis; CHI3L1, chitinase 3-like 1; DEG, differentially expressed gene; GO, gene ontology; IFN- γ , interferon gamma; IGRA, interferon gamma-release assay; IL-8, interleukin-8; KEGG, Kyoto Encyclopedia of Genes and Genomes; LTA, lymphotoxin alpha; PBMC, peripheral blood mononuclear cell; PBS, phosphate-buffered saline; PCR, polymerase chain reaction; PCR-N, PCR-negative; PCR-P, PCR-positive; PPD-B, purified protein derivative of bovine tuberculin; TST, tuberculin skin test.



infection statuses of bTB (three biological replicates: exact 3 *M. bovis*-infected cattle that were nested PCR positive, 3 *M. bovis*-infected cattle that were nested PCR negative and 3 healthy cattle). According to the manufacturer's protocol, the libraries for Illumina sequencing were made with the TruSeq Stranded mRNA sample prep kit (Illumina, San Diego, USA) and sequenced using an Illumina HiSeq 2000 system.

Bioinformatics Analysis of RNA-Seq Data

For the sake of obtaining high-quality clean reads, the adapter sequence and low-quality sequences were trimmed. All clean reads were mapped to the *Bos taurus* reference genome (UMD3.1.73) using TopHat2 software (17, 18). The data of three biologically repeated samples were assembled by Cuffmerge (19), and the expression levels of genes in different groups were finally obtained. Next, differentially expressed genes (DEGs) were identified using the edgeR algorithms (20). For the RNA-Seq data, genes with expression fold change of >1.5 or <0.67 and with q-values of <0.05 after correction by false discovery rate (FDR) were considered significant. GO analysis and pathway analysis were performed using the Gene Ontology database (<http://geneontology.org/>) and Kyoto Encyclopedia of Genes and Genomes database (KEGG) (<http://www.genome.jp/kegg/>).

Validation of RNA-Seq Data by Reverse-Transcription-Quantitative PCR (qRT-PCR)

To validate PBMC mRNA-expression levels observed by RNA-Seq, seven genes in PPD-B-stimulated PBMCs and seven genes in unstimulated PBMCs were randomly selected and simultaneously validated by qRT-PCR. According to the manufacturer's directions, gDNA was wiped out and the total RNA was reverse transcribed into cDNA with Oligo (dT) primers

(Qiagen, Venlo, The Netherlands). Those total RNA samples were the same samples used in RNA-Seq library preparation in section RNA-Seq Library Preparation and Sequencing. For qPCR, triplicate 20 μ L reactions containing 10 μ L 2 \times QuantiNova SYBR Green PCR Master Mix (Qiagen), different pairs of 0.7 μ M primers (Supplementary Table 1), and 1 μ L of cDNA were analyzed using a CFX96 real-time PCR instrument (Bio-Rad Laboratories, California, USA). An initial 2-min denaturation step at 95°C was followed by 40 PCR cycles (95°C for 5 s and 60°C for 10 s). β -actin mRNA was detected as an endogenous control, and relative gene-expression levels were calculated using the comparative $2^{-\Delta\Delta C_t}$ method (21). All primers used in this study were designed with Primer Premier 6.0 software and listed in Supplementary Table 1.

Validation of the Performance of PBMCs Transcripts as Biomarker for bTB Diagnosis

To evaluate the performance of potential biomarkers for bTB, PPD-B-stimulated and unstimulated PBMCs were harvested from 34 naturally *M. bovis*-infection cattle (including 17 bTB PCR-P and 17 bTB PCR-N cattle) and 17 healthy cattle. The RNAs were extracted to measure gene-expression levels using the $2^{-\Delta\Delta C_t}$ method by qRT-PCR, with unstimulated PBMCs serving as a calibrator, and β -actin serving as the reference gene (the primers were shown in Supplementary Table 1). Receiver operating characteristic (ROC) analysis was used to evaluate the diagnostic value of potential biomarkers of interest.

Statistical Analysis

Data analysis were conducted and visualized by ANOVA followed by Tukey's multiple comparison test using Prism

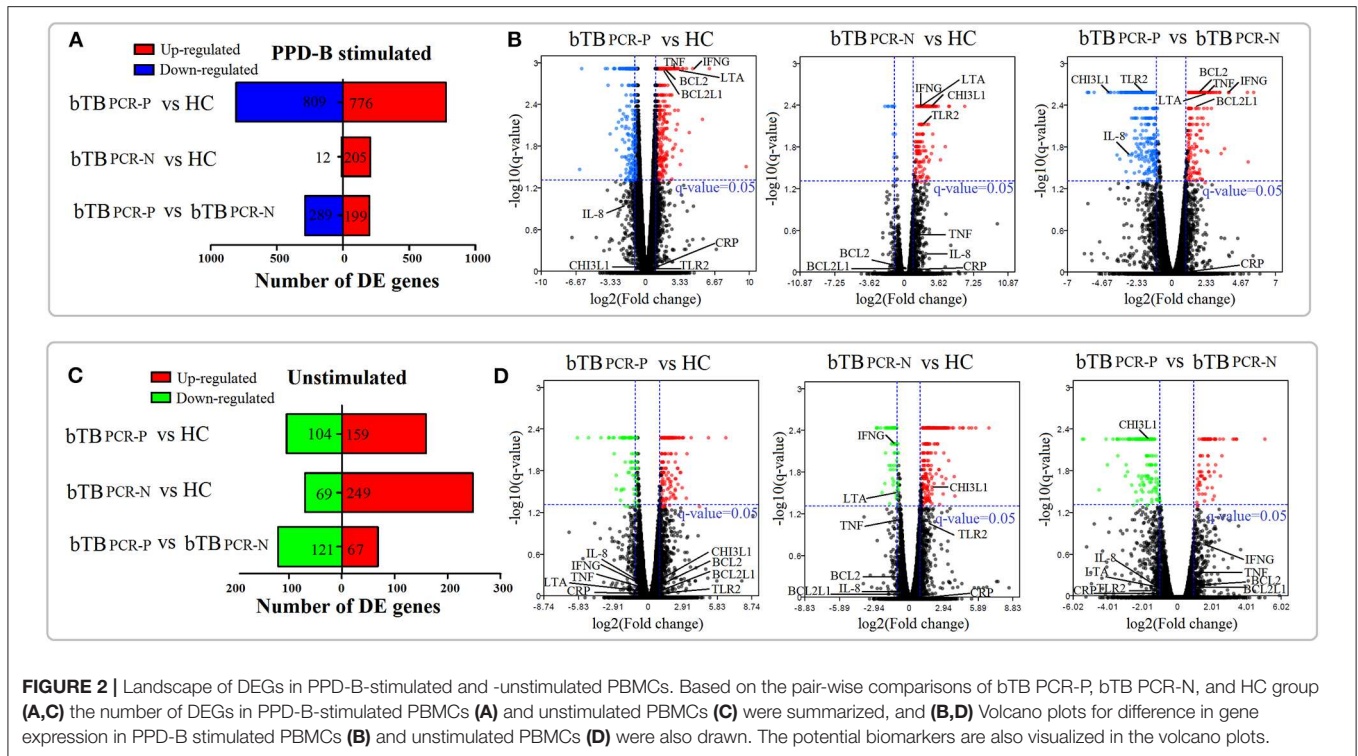


FIGURE 2 | Landscape of DEGs in PPD-B-stimulated and -unstimulated PBMCs. Based on the pair-wise comparisons of bTB PCR-P, bTB PCR-N, and HC group (A,C) the number of DEGs in PPD-B-stimulated PBMCs (A) and unstimulated PBMCs (C) were summarized, and (B,D) Volcano plots for difference in gene expression in PPD-B stimulated PBMCs (B) and unstimulated PBMCs (D) were also drawn. The potential biomarkers are also visualized in the volcano plots.

v5.0 (GraphPad Software, La Jolla, CA, USA). $P < 0.05$ were considered significant.

RESULTS

Sample Screening and Utilization

Screening results indicated that, of the 368 cattle, 138 cattle were positive for TST, 106 cattle were positive for IGRA, and 32 cattle were positive for nested PCR. Based on the TST, IGRA, nested-PCR and the serological diagnosis results (negative for BVD, Brucella, etc.), we selected 20 naturally *M. bovis*-infected bTB PCR-P and 20 bTB PCR-N cattle (a total of 40 naturally *M. bovis*-infected cattle), as well as 20 age- and sex-matched healthy cattle (HC) for this study. Three cattle in each group were used for RNA-Seq, and the remaining 17 cattle were studied in biomarker-verification experiments.

Landscape of Differential Gene Expression in Bovine PBMCs

PBMC mRNA-expression levels in cattle in the bTB PCR-P, bTB PCR-N, and HC groups were investigated by high-throughput sequencing. Each sample was divided into two treatment groups, where one was stimulated with PPD-B and the other served as an unstimulated control. Six groups of differentially expressed genes (DEGs) were identified based on our screening criteria (fold-change >1.5 or <0.67 ; $q < 0.05$) (all of the DEGs are listed in **Supplementary Tables 2, 3**).

In the unstimulated treatment groups, compared to the HC cattle, we identified 263 DEGs (159 upregulated and 104 downregulated) and 318 DEGs (249 upregulated and 69 downregulated) in bTB PCR-P and bTB PCR-N cattle,

respectively. A total of 188 DEGs (67 upregulated and 121 downregulated) were identified between bTB PCR-P and bTB PCR-N cattle (**Figure 2C**). Even though the cattle selected for this study were confirmed to be free of usual epidemic diseases (i.e., paratuberculosis, brucellosis, and bovine viral diarrhea), we could not exclude the possibility of infection with other pathogens. Therefore, we used an *M. bovis*-specific antigen (PPD-B) as a stimulus to analyze the adaptive immune responses of *M. bovis*-infected cattle with different infection statuses. Interestingly, in the PPD-B-stimulated groups, a relatively large number of DEGs was observed. Compared to the HC cattle, we identified 1585 DEGs (776 upregulated and 809 downregulated) and 217 DEGs (205 upregulated and 12 downregulated) in bTB PCR-P and bTB PCR-N cattle, respectively. We also identified 488 DEGs (199 upregulated and 289 downregulated) between bTB PCR-P and bTB PCR-N cattle (**Figure 2A**).

Overall, our current results revealed numerous DEGs in the pair-wise comparisons of different groups with and without stimulated. Volcano plots were also drawn (**Figures 2B,D**). With this approach, we visualized the expression levels and statistical significances of all genes between the bTB PCR-P, bTB PCR-N, and HC groups.

Validation of RNA-Seq Data by qRT-PCR

To validate the RNA-Seq data, 14 genes were randomly selected for qRT-PCR analysis. Expression of the interferon-induced protein with tetratricopeptide repeats 1 (*IFIT1*) gene was not detected in unstimulated PBMCs from bTB PCR-N cattle by qRT-PCR because of the low expression level. Our results showed that the expression of most (13/14) of the selected genes was

TABLE 1 | Transcriptional level of 14 randomly selected genes by RNA-seq and qRT-PCR.

Gene	PPD-B stimulated PBMCs (Log ₂ FC)				Gene	Unstimulated PBMCs (Log ₂ FC)			
	RNA-Seq		qPCR			RNA-Seq		qRT-PCR	
	bTB PCR-P/NC	bTB PCR-N/NC	bTB PCR-P/NC	bTB PCR-N/NC		bTB PCR-P/NC	bTB PCR-N/NC	bTB PCR-P/NC	bTB PCR-N/NC
<i>TIMP1</i>	-0.872	1.596	-0.982	1.129	<i>CD69</i>	-2.196	-1.836	-1.948	-1.776
<i>TNFAIP2</i>	0.861	1.845	1.374	1.828	<i>IFIT1</i>	-1.062	-1.457	-0.732	-
<i>THEMIS2</i>	1.046	2.333	0.988	1.757	<i>IL17F</i>	-1.041	-2.527	-0.938	-3.011
<i>LRP1</i>	1.049	2.656	1.278	2.225	<i>IL17</i>	-2.079	-2.884	-2.413	-2.353
<i>CYP27B1</i>	1.067	2.846	2.053	1.810	<i>THBS1</i>	2.498	4.515	2.472	3.947
<i>PSTPIP2</i>	-0.757	1.249	2.081	2.586	<i>AMT</i>	0.967	1.251	1.081	1.725
<i>SAA1</i>	-3.743	1.905	-2.372	1.004	<i>CLCN7</i>	0.894	1.054	1.028	1.246

-, not detected by qRT-PCR.

consistent with the log₂ (fold-change) values determined by RNA-Seq and qRT-PCR (Table 1).

PBMC Transcriptomics Elucidated Different Host responses Associated With bTB Progression

To gain specific biological insights into different bTB infection statuses, we analyzed the DEGs using the GO and KEGG databases. To increase the rigor of our analysis, we focused solely on *M. bovis*-specific antigen (PPD-B)-stimulated PBMCs.

The significantly enriched GO categories (biological process, cellular components, and molecular functions) are summarized in Figure 3C and Supplementary Table 4. GO analysis of bTB PCR-P and HC cattle indicated that the DEGs encode proteins that were mainly located in extracellular exosome and nucleoplasm; possess TNF-activated receptor activity and metal ion binding; and were involved in response to lipopolysaccharide, defense response to protozoan, positive regulation of transcription from RNA polymerase II promoter, inflammatory response and apoptotic signaling pathway (Figure 3C-1). The DEGs between bTB PCR-N and HC cattle encode proteins that were mainly localized in extracellular space and on cell surface; possessed transcription factor activity sequence-specific binding and lipopolysaccharide binding; and were involved in inflammatory response, positive regulation of angiogenesis, immune response, phagocytosis, engulfment, and positive regulation of IL-6 secretion (Figure 3C-2). The DEGs between PCR-positive and -negative bTB cattle encode proteins that were mainly located in extracellular space and external side of plasma membrane; possessed growth factor activity and calcium ion binding; and were involved in inflammatory response, immune response, neutrophil chemotaxis, chemotaxis, and cell chemotaxis (Figure 3C-3).

Given the broad and variable differences in PBMC mRNA-expression levels between healthy and bTB cattle for the PCR-positive and -negative pairs, KEGG analysis was performed to identify dysregulated biological pathways by pooling DEGs into host-gene pathways. The 20 most significantly affected pathways of the three pair-wise comparisons revealed changes in the different biological states (PCR-positive and -negative)

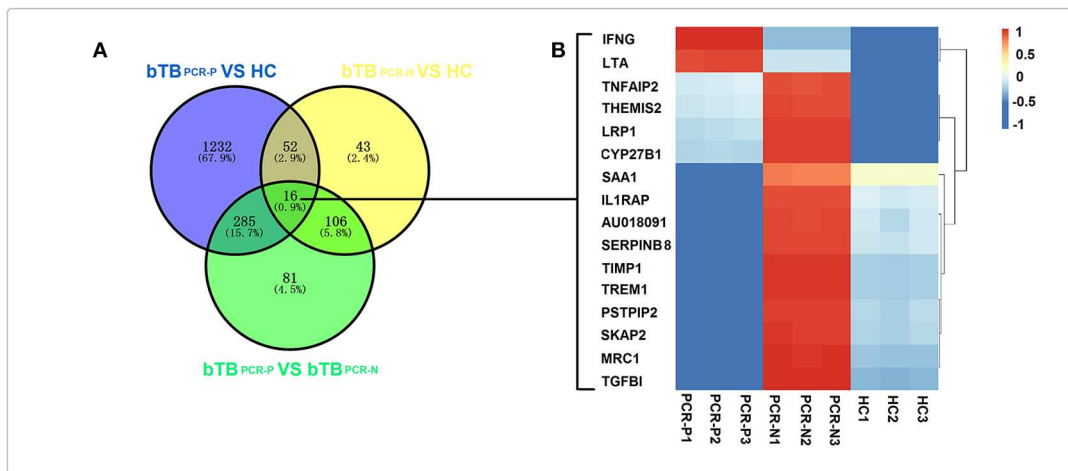
of bTB (Figure 3D and Supplementary Table 4). For the most part, the significantly affected pathways were associated with immunobiology. Specifically, five pathways were overlapped in the three comparisons, including Cytokine-cytokine receptor interaction, NF-kappa B signaling pathway, Hematopoietic cell lineage, Osteoclast differentiation and HTLV-I infection (Figures 3D1–3). This result not only indicated that these pathways were dysregulated in bTB cattle but also emphasized the different degrees of dysregulation in bTB PCR-P and bTB PCR-N cattle. In addition, dysregulated pathways associated with cell death were widely identified in bTB PCR-P cattle when compared to HC cattle, including regulation of autophagy, Jak-STAT signaling pathway, apoptosis, and FoxO signaling pathway (Figure 3D-1). The pathways associated with phagocytosis were differentially activated between bTB PCR-N and HC cattle, including phagosomes and lysosomes (Figure 3D-2).

Furthermore, Venn diagram analysis revealed 16 DEGs shared between the bTB PCR-P, bTB PCR-N, and HC groups (Figure 3A). Heatmap analysis showed the relative expression levels of these 16 DEGs in the different groups (Figure 3B).

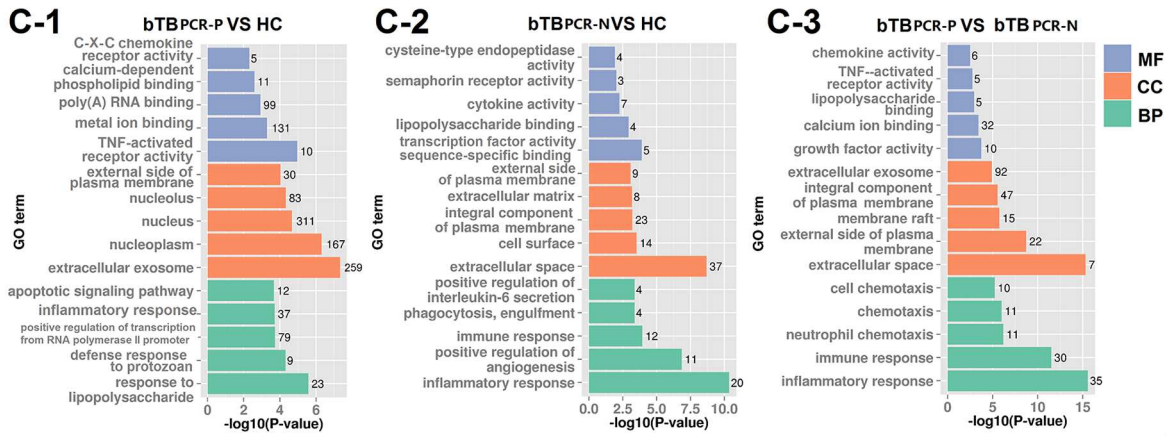
Diagnostic Value of PBMC Transcriptional Gene Signatures in bTB Progression

The PBMC transcriptomic profiles observed in this study provided an unbiased, comprehensive overview of host factors that are dysregulated in the progression of bTB infection. Given this phenomenon, we explored the diagnostic value of host PBMC genes in detecting *M. bovis* infection and distinguishing the stage of *M. bovis* infection. Based on the fold-changes, the bioinformatics and Venn diagram analyses of the DEGs, and combined with our previous proteomic results (22), 9 PBMC transcriptional gene signatures were selected as potential biomarkers for further verification (Supplementary Table 5). The expression levels and statistical significances of 9 genes (*IFNG*, *TNF*, *IL8*, *CRP*, *BCL2L1*, *BCL2*, *TLR2*, *CHI3L1*, and *LTA*) obtained by RNA-Seq were plotted in Figures 2B,D.

qRT-PCR and ROC analysis suggested that the *LTA*, *IL-8*, *BCL2*, and *CHI3L1* genes serve as valuable, novel biomarkers for bTB diagnosis. The mRNA-expression levels of *LTA* and *IL-8* induced by PPD-B were significantly higher in bTB



The most enriched GO terms



Statistics of Pathway Enrichment

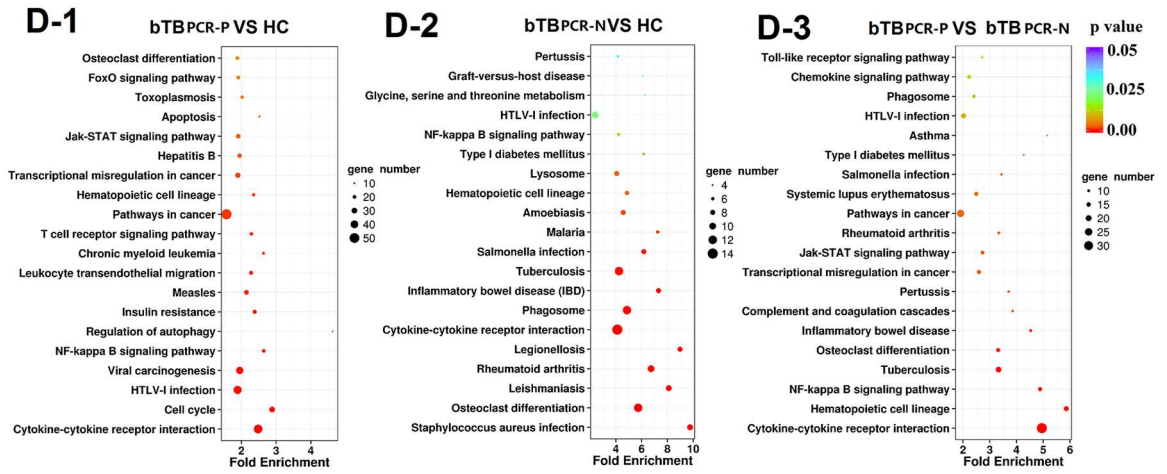
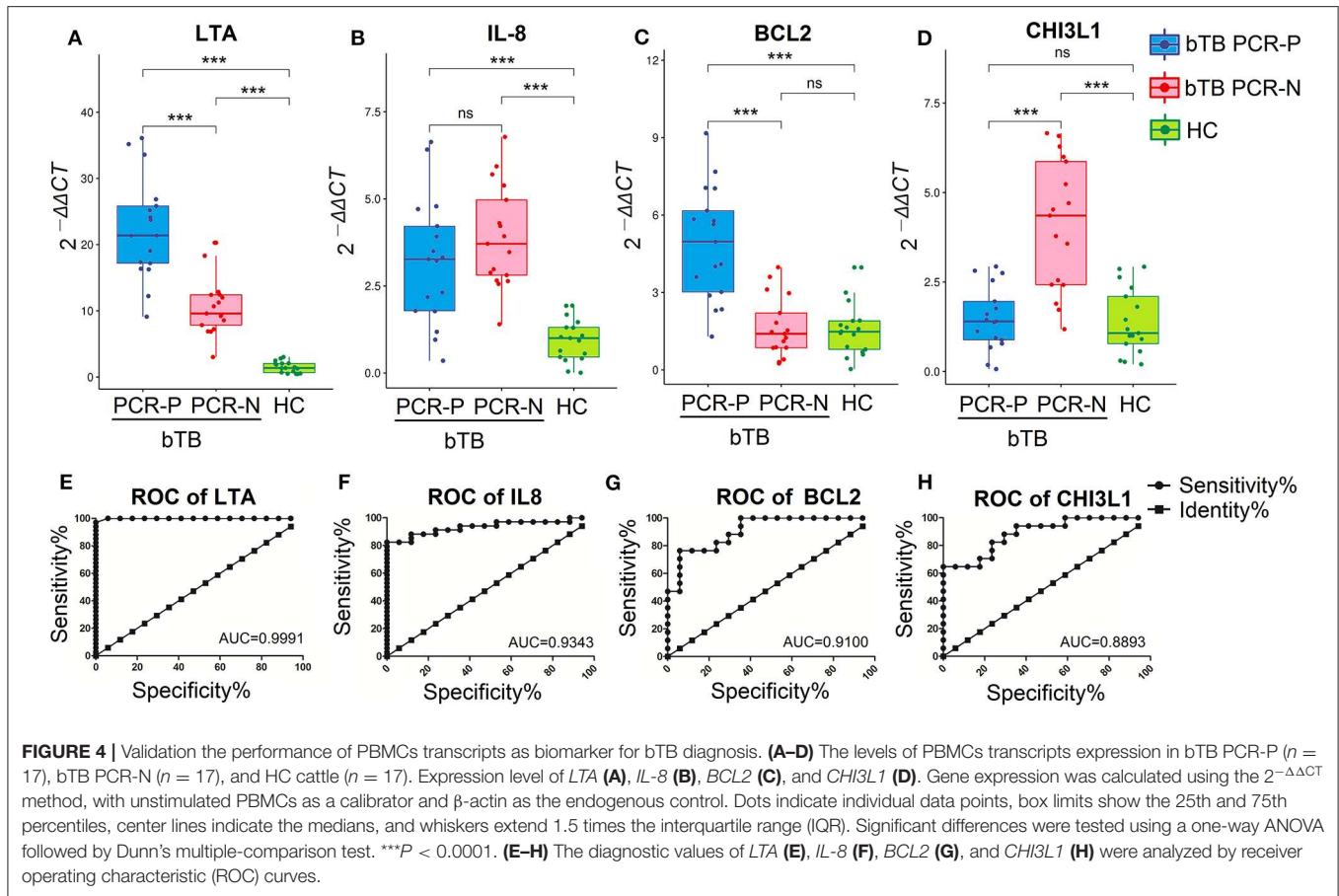


FIGURE 3 | Transcriptome analyses of PPD-B stimulated PBMCs. **(A)** Venn diagrams of DEGs among the three comparing groups. **(B)** Heat map showing the expression of 16 DEGs overlapped in the three comparing groups. The bar indicates relative expression level from high (red) to low (blue). **(C1–3)** The most significantly enriched GO terms of the DEGs in the three comparing groups. GO categories are grouped by biological process (BP), cellular component (CC), and molecular function (MF). **(D1–3)** KEGG pathway analysis of the DEGs among the three comparing groups.



cattle (including bTB PCR-P and bTB PCR-N) than in HC cattle ($P < 0.0001$; **Figures 4A,B**), and the AUC values were 0.9991 and 0.9343, respectively (**Figures 4E,F**). The mRNA-expression level of *BCL2* induced by PPD-B was significantly higher in bTB PCR-P cattle than in bTB PCR-N and HC cattle (**Figure 4C**), with an AUC value of 0.9100 (**Figure 4G**). The mRNA-expression level of *CHI3L1* induced by PPD-B was significantly higher in bTB PCR-N cattle than in bTB PCR-P and HC cattle (**Figure 4D**) with the AUC value of 0.8893 (**Figure 4H**).

Protein IFN- γ has been used commercially as a valuable biomarker for diagnosing bovine tuberculosis. In this study, the mRNA-expression level of *IFNG* (which encodes IFN- γ) induced by PPD-B was significantly higher in bTB cattle than in HC cattle (**Supplementary Figure 1A1**), and the AUC value of *IFNG* was 1.0000 (**Supplementary Figure 1B1**). This result is consistent with those of previous reports. Unfortunately, ROC analysis for *BCL2L1* (AUC = 0.7024) and *TNF- α* (AUC = 0.6851) showed poor diagnostic performance (**Supplementary Figures 1B2,B3**), although their mRNA-expression levels were higher in bTB cattle than that in HC cattle (**Supplementary Figures 1A2,A3**). The *TLR2* mRNA-expression level, with or without PPD-B stimulation, was significantly higher in bTB PCR-N cattle than that in bTB PCR-P and HC cattle (data not shown), indicating that it may not be bTB-specific. *CRP* mRNA expression was not

high enough to be detected which means it is unable to meet the essential requirements as biomarker.

Collectively, after excluding a known biomarker (*IFNG*) and inappropriate transcripts (*BCL2L1*, *TNF*, *TLR2*, and *CRP*), we validated 4 novel potentially reliable biomarkers for bTB diagnosis. PPD-B-stimulated *LTA* and *IL-8* could potentially differentiate *M. bovis*-infected cattle from HC, and PPD-B-stimulated *BCL2* and *CHI3L1* have the potential power in differentiating bTB PCR-P cattle from bTB PCR-N cattle.

DISCUSSION

World Health Organization pointed out that human TB can only be controlled by eradicating bTB (22). An efficient way to eradicate bTB is to slaughter *M. bovis*-infected cattle, and prioritizing the slaughter of bTB cattle that actively shed mycobacteria was recommended (23). An even more urgent need is to reveal the immune heterogeneity of bTB in different stages, and to develop and apply improved diagnostic techniques for active bTB to prevent them from transmitting bTB.

Using comprehensive PBMC transcriptomics, we showed substantial variability in the immune responses of *M. bovis*-infected cattle (diagnosed by TST and IGRA) determined to be nested-PCR-positive or -negative. We identified 188 and

488 DEGs in unstimulated and PPD-B-stimulated PBMCs between bTB PCR-P and bTB PCR-N cattle, respectively (Figures 2A,C). GO analysis showed different physiological functions between bTB PCR-P and bTB PCR-N cattle. Cellular component ontology displays the classification of DEGs based on the cell structures. Compared to healthy cattle, the DEGs encode proteins in bTB PCR-P cattle mainly located in nucleus (311 genes) and extracellular exosome (259 genes) (Supplementary Table 4 and Figure 3C–1). It is noteworthy that the genes classified in the nucleus which associated with apoptosis were significantly downregulated (Supplementary Table 3). For example, *TP53INP1* (tumor protein p53 inducible nuclear protein 1) and *TPRKB* (TP53RK binding protein) were significantly downregulated which downregulated p53-mediated apoptosis that suppressed cell death (24). The DEGs encode proteins in bTB PCR-N cattle mainly located in the extracellular space (37 genes) (Supplementary Table 4 and Figure 3C–2). These DEGs mainly associated with inflammatory response (e.g., *IL17A*, *CD14*, and *LTA*). KEGG analysis identified dysregulated biological pathways in bTB PCR-P and bTB PCR-N cattle associated with cell death and phagocytosis, respectively. Previous findings indicated that *M. tuberculosis* inhibits host cell apoptosis as one of its pathogenic mechanisms (25, 26). Taking into account that the level of expression of antiapoptotic factors (e.g., *BCL2* and *BCL2L1*) increased significantly and the level of expression of apoptotic factors (e.g., *TP53INP1* and *TPRKB*) decreased significantly, we hypothesized that, like *M. tuberculosis*, *M. bovis* inhibits apoptosis. Phagocytosis plays an important role in the immune response against tuberculosis. Interestingly, we found the DEGs associated with phagocytosis were significantly enriched in bTB PCR-N cattle and were associated with biological processes (phagocytosis and engulfment) and pathways (phagosomes and lysosomes). Although phagocytosis efficiently kills mycobacteria, mycobacteria also inhibit phagosome–lysosomes fusion for intracellular survival (27). However, our results indicated that dysregulated phagocytosis was only characteristic of bTB PCR-N cattle, and the thorough studies are needed to reveal the exact underlying mechanisms. Moreover, several dysregulated biological pathways associated with the occurrence and development of tuberculosis were observed in bTB PCR-P and bTB PCR-N cattle. For example, cytokine–cytokine receptor interaction are critical for balancing innate and adaptive immune cells and NF-kappa B signaling pathway is key for regulating immune functions that play important roles in TB progression (28, 29).

Collectively, our current transcriptomic results suggest that bTB PCR-P and bTB PCR-N cattle exhibit various immune responses to *M. bovis*-specific antigen and provided a backbone to leverage our grouping method based on the stages of bTB progression.

Although several biomarkers have been developed for bTB diagnosis (6), disease-specific transcriptional biomarkers are still helpful for bTB control and may provide a supplement or alternative to traditional diagnostic methods, such as TST and IGRAs. Previous studies suggested that *LTA* serves a protective

role during *M. tuberculosis* infection and the IL-8–pathogen binding contributes to the increased mycobactericidal properties of macrophages and neutrophils (30, 31). Here, high *LTA* and *IL-8* concentrations in bTB cattle were observed and the results strongly suggested that *LTA* and *IL-8* can potentially enable differentiation of bTB cattle from healthy cattle (Figures 4A,B). *Mycobacterium tuberculosis* can inhibit host cell apoptosis by inducing *BCL2* over-expression to evade host immune responses (32). We detected high *BCL2* mRNA expression only in bTB PCR-P cattle (Figure 4C). We suspected that apoptosis inhibition acts an important strategy for intracellular *M. bovis* survival during early infection. Given the good performance of *BCL2* in differentiating bTB PCR-P from bTB PCR-N cattle, exactly how *M. bovis* utilizes *BCL2* in host cells needs further study. *CHI3L1* plays a significant role in tissue inflammation and remodeling and has been implicated in the pathogenesis of granulomatous and fibrotic interstitial lung diseases (33). To our knowledge, while high levels of *CHI3L1* have been observed in many lung diseases (34), only this study assessed this factor as a diagnostic tool for bTB. Granulomas act as protective structures by sealing off and limiting mycobacteria. *CHI3L1* mRNA expression significantly increased in bTB PCR-N cattle (Figure 4D), which may indicate the formation of granuloma. This may explain why the bTB PCR-N cattle did not shed mycobacteria.

In conclusion, our transcriptome data with PBMCs revealed the immune heterogeneity in mycobacteria shedding and non-shedding bTB infected cattle which can improve the understanding of the molecular mechanisms in bTB progression. Importantly, we introduced several promising biomarkers for bTB diagnosis. Given that some mRNAs were highly expressed in mycobacteria shedding or non-shedding bTB infected cattle, their detection may be robustly useful for early diagnosis and eradication of bTB. However, there were some limitations in this study: It was not possible to confirm the infection of *M. bovis* and the stages of bTB progression by slaughtering all cattle used in this study. Further, large-scale clinical test is required to validate these putative biomarkers for bTB diagnosis.

DATA AVAILABILITY STATEMENT

The datasets generated for this study can be found in NCBI GEO, NCBI Accession No. GSE149505.

ETHICS STATEMENT

The animal study was reviewed and approved by Animal Care and Use Committee of the China Institute of Veterinary Drug Control (SYXK 2005-0021).

AUTHOR CONTRIBUTIONS

TX, LJ, and JD designed the experiments. LF, WL, HJ, XGa, XS, YJ, SH, LZ, and XGu performed the experiments. TX, LJ, LF, HZ,

and WL analyzed the data. LF, TX, and LJ wrote and revised the paper.

FUNDING

This work was supported by the National Key Research and Development Program (grant no. 2016YFD0500900 and 2017YFD0500900), the National Natural Sciences Foundation

of China (grant no. 31602086), and the Beijing Natural Science Foundation (grant no. 6164039).

SUPPLEMENTARY MATERIAL

The Supplementary Material for this article can be found online at: <https://www.frontiersin.org/articles/10.3389/fvets.2020.00295/full#supplementary-material>

REFERENCES

- Ayele WY, Neill SD, Zinsstag J, Weiss MG, Pavlik I. Bovine tuberculosis: an old disease but a new threat to Africa. *Int J Tuberc Lung Dis.* (2004) 8:924–37.
- Godfray HC, Donnelly CA, Kao RR, Macdonald DW, McDonald RA, Petrokofsky G, et al. A restatement of the natural science evidence base relevant to the control of bovine tuberculosis in Great Britain? *Proc Biol Sci.* (2013) 280:20131634. doi: 10.1098/rspb.2013.1634
- Michel AL, Müller B, Van Helden PD. *Mycobacterium bovis* at the animal-human interface: a problem, or not? *Vet Microbiol.* (2010) 140:371–81. doi: 10.1016/j.vetmic.2009.08.029
- Gumi B, Schelling E, Berg S, Firdessa R, Erenso G, Mekonnen W, et al. Zoonotic transmission of tuberculosis between pastoralists and their livestock in SouthEast Ethiopia. *Ecohealth.* (2012) 9:139–49. doi: 10.1007/s10393-012-0754-x
- Surujballi O, Lutze-Wallace C, Turcotte C, Savic M, Stevenson D, Romanowska A, et al. Sensitive diagnosis of bovine tuberculosis in a farmed cervid herd with use of an MPB70 protein fluorescence polarization assay. *Can J Vet Res.* (2009) 73:161–6.
- Schiller I, Oesch B, Vordermeier H, Palmer M, Harris B, Orloski K, et al. Bovine tuberculosis: a review of current and emerging diagnostic techniques in view of their relevance for disease control and eradication. *Transbound Emerg Dis.* (2010) 57:205–20. doi: 10.1111/j.1865-1682.2010.01148.x
- Serrano-Moreno BA, Romero TA, Arriaga C, Torres RA, Pereira-Suarez AL, Garcia-Salazar JA, et al. High frequency of *Mycobacterium bovis* DNA in colostrum from tuberculous cattle detected by nested PCR. *Zoonoses Public Health.* (2008) 55:258–66. doi: 10.1111/j.1863-2378.2008.01125.x
- Singhania A, Wilkinson RJ, Rodrigue M, Haldar P, O'Garra A. The value of transcriptomics in advancing knowledge of the immune response and diagnosis in tuberculosis. *Nat Immunol.* (2018) 19:1159–68. doi: 10.1038/s41590-018-0225-9
- Costello E, Doherty ML, Monaghan ML, Quigley FC, O'Reilly PF. A study of cattle-to-cattle transmission of *Mycobacterium bovis* infection. *Vet J.* (1998) 155:245–50. doi: 10.1016/S1090-0233(05)80019-X
- Cassidy JP, Bryson DG, Pollock JM, Evans RT, Forster F, Neill SD. Early lesion formation in cattle experimentally infected with *Mycobacterium bovis*. *J Comp Pathol.* (1998) 119:27–44. doi: 10.1016/S0021-9975(98)80069-8
- Xin T, Gao X, Yang H, Li P, Liang Q, Hou S, et al. Limitations of using IL-17A and IFN-gamma-induced protein 10 to detect bovine tuberculosis. *Front Vet Sci.* (2018) 5:28. doi: 10.3389/fvets.2018.00028
- Flores-Villalva S, Suárez-Güemes F, Espitia C, Whelan A, Vordermeier M, Gutiérrez-Pabello J. Specificity of the tuberculin skin test is modified by use of a protein cocktail containing ESAT-6 and CFP-10 in cattle naturally infected with *Mycobacterium bovis*. *Clin Vaccine Immunol.* (2012) 19:797–803. doi: 10.1128/CVI.05668-11
- McGettigan PA. Transcriptomics in the RNA-Seq era. *Curr Opin Chem Biol.* (2013) 17:4–11. doi: 10.1016/j.cbpa.2012.12.008
- Qian Z, Lv J, Kelly GT, Wang H, Zhang X, Gu W, et al. Expression of nuclear factor, erythroid 2-like 2-mediated genes differentiates tuberculosis. *Tuberculosis.* (2016) 99:56–62. doi: 10.1016/j.tube.2016.04.008
- Roe JK, Thomas N, Gil E, Best K, Tsaliki E, Morris-Jones S, et al. Blood transcriptomic diagnosis of pulmonary and extrapulmonary tuberculosis. *JCI Insight.* (2016) 1:e87238. doi: 10.1172/jci.insight.87238
- Xin T, Jia H, Ding J, Li P, Yang H, Hou S, et al. Assessment of a protein cocktail-based skin test for bovine tuberculosis in a double-blind field test in cattle. *Clin Vaccine Immunol.* (2013) 20:482–90. doi: 10.1128/CVI.00592-12
- Zimin AV, Delcher AL, Florea L, Kelley DR, Schatz MC, Puiu D, et al. A whole genome assembly of the domestic cow, *Bos taurus*. *Genome Biol.* (2009) 10:R42. doi: 10.1186/gb-2009-10-4-r42
- Kim D, Pertea G, Trapnell C, Pimentel H, Kelley R, Salzberg SL. TopHat2: accurate alignment of transcriptomes in the presence of insertions, deletions and gene fusions. *Genome Biol.* (2013) 14:R36. doi: 10.1186/gb-2013-14-4-r36
- Trapnell C, Williams BA, Pertea G, Mortazavi A, Kwan G, Van Baren MJ, et al. Transcript assembly and quantification by RNA-Seq reveals unannotated transcripts and isoform switching during cell differentiation. *Nat Biotechnol.* (2010) 28:511–15. doi: 10.1038/nbt.1621
- Robinson MD, McCarthy DJ, Smyth GK. EdgeR: a bioconductor package for differential expression analysis of digital gene expression data. *Bioinformatics.* (2010) 26:139–40. doi: 10.1093/bioinformatics/btp616
- Livak KJ, Schmittgen TD. Analysis of relative gene expression data using real-time quantitative PCR and the 2^{-ΔΔCt} method. *Methods.* (2001) 25:402–8. doi: 10.1006/meth.2001.1262
- International C. Expert Committee on Tuberculosis. Seventh Report. Geneva, 28 September–3 October 1959. *Tech Rep.* (1960) 343:213–14.
- Gao X, Guo X, Li M, Jia H, Lin W, Fang L, et al. Interleukin 8 (IL-8) and Pentaxin (CRP) as potential new biomarkers of bovine tuberculosis. *J Clin Microbiol.* (2019) 57:e00274-19. doi: 10.1128/JCM.00274-19
- Peugot S, Bonacci T, Soubeyran P, Iovanna J, Dusetti, NJ. Oxidative stress-induced p53 activity is enhanced by a redox-sensitive TP53INP1 SUMOylation. *Cell Death Differ.* (2014) 21:1107–18. doi: 10.1038/cdd.2014.28
- Keane J, Remold HG, Kornfeld H. Virulent *Mycobacterium tuberculosis* strains evade apoptosis of infected alveolar macrophages. *J Immunol.* (2000) 164:2016–20. doi: 10.4049/jimmunol.164.4.2016
- Forrellad MA, Klepp LI, Giofré A, Sabio y García J, Morbidoni HR, et al. Virulence factors of the *Mycobacterium tuberculosis* complex. *Virulence.* (2013) 4:3–66. doi: 10.4161/viru.22329
- Rohde KH, Veiga DF, Caldwell S, Balázi G, Russell DG. Linking the transcriptional profiles and the physiological states of *Mycobacterium tuberculosis* during an extended intracellular infection. *PLoS Pathog.* (2012) 8:e1002769. doi: 10.1371/journal.ppat.1002769
- Monin L, Khader SA. Chemokines in tuberculosis: the good, the bad and the ugly. *Semin Immunol.* (2014) 26:552–8. doi: 10.1016/j.smim.2014.09.004
- Brown MC, Taffet SM. Lipoarabinomannans derived from different strains of *Mycobacterium tuberculosis* differentially stimulate the activation of NF-kappa B and KBF1 in murine macrophages. *Infect Immun.* (1995) 63:1960–68. doi: 10.1128/IAI.63.5.1960-1968.1995
- Allie N, Keeton R, Court N, Abel B, Fick L, Vasseur V, et al. Limited role for lymphotoxin α in the host immune response to *Mycobacterium tuberculosis*. *J Immunol.* (2010) 185:4292–301. doi: 10.4049/jimmunol.1000650
- Krupa A, Fol M, Dziadek BR, Kepka E, Wojciechowska D, Brzostek A, et al. Binding of CXCL8/IL-8 to *Mycobacterium tuberculosis* modulates the innate immune response. *Med Inflamm.* (2015) 11:1–11. doi: 10.1155/2015/124762

32. Mogga SJ, Mustafa T, Sviland L, Nilsen R. Increased Bcl-2 and reduced Bax expression in infected macrophages in slowly progressive primary murine *Mycobacterium tuberculosis* infection. *Scand J Immunol.* (2002) 56:383–91. doi: 10.1046/j.1365-3083.2002.01140.x
33. Bargagli E, Maggiorelli C, Rottoli P. Human chitotriosidase: a potential new marker of sarcoidosis severity. *Respiration.* (2008) 76:234–8. doi: 10.1159/000134009
34. Chupp GL, Lee CG, Jarjour N, Shim YM, Holm CT, He S, et al. A chitinase-like protein in the lung and circulation of patients with severe asthma. *N Engl J Med.* (2007) 357:2016–27. doi: 10.1056/NEJMoa073600

Conflict of Interest: The authors declare that the research was conducted in the absence of any commercial or financial relationships that could be construed as a potential conflict of interest.

Copyright © 2020 Fang, Lin, Jia, Gao, Sui, Guo, Hou, Jiang, Zhu, Zhu, Ding, Jiang and Xin. This is an open-access article distributed under the terms of the Creative Commons Attribution License (CC BY). The use, distribution or reproduction in other forums is permitted, provided the original author(s) and the copyright owner(s) are credited and that the original publication in this journal is cited, in accordance with accepted academic practice. No use, distribution or reproduction is permitted which does not comply with these terms.