



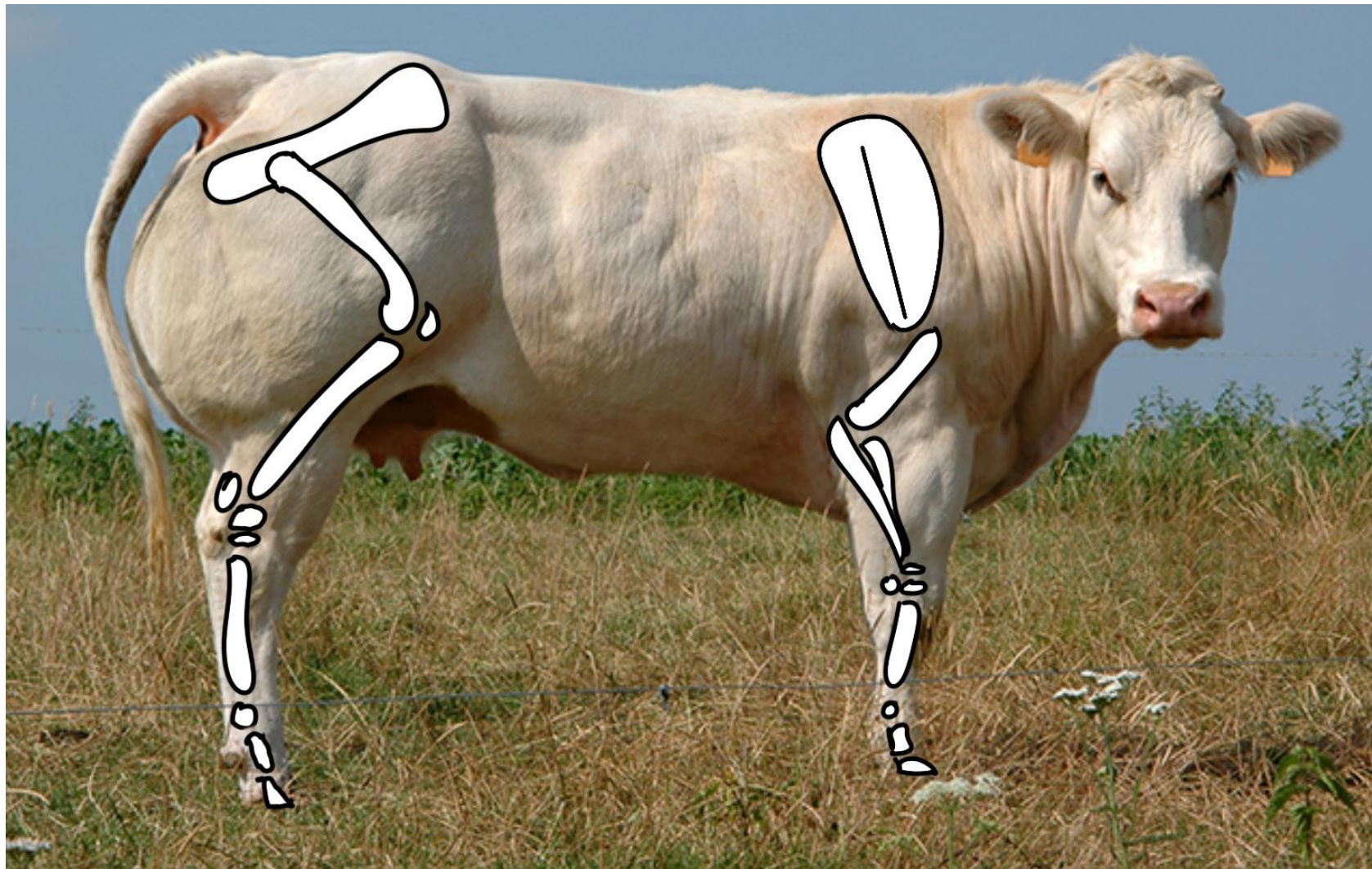
Modified Thomas splint-cast use in cattle limb fractures: 165 cases (2013-2020)

Linde Gille, Salem Djebala, Calixte Bayrou, Hélène Casalta, Justine Eppe, Arnaud Sartelet

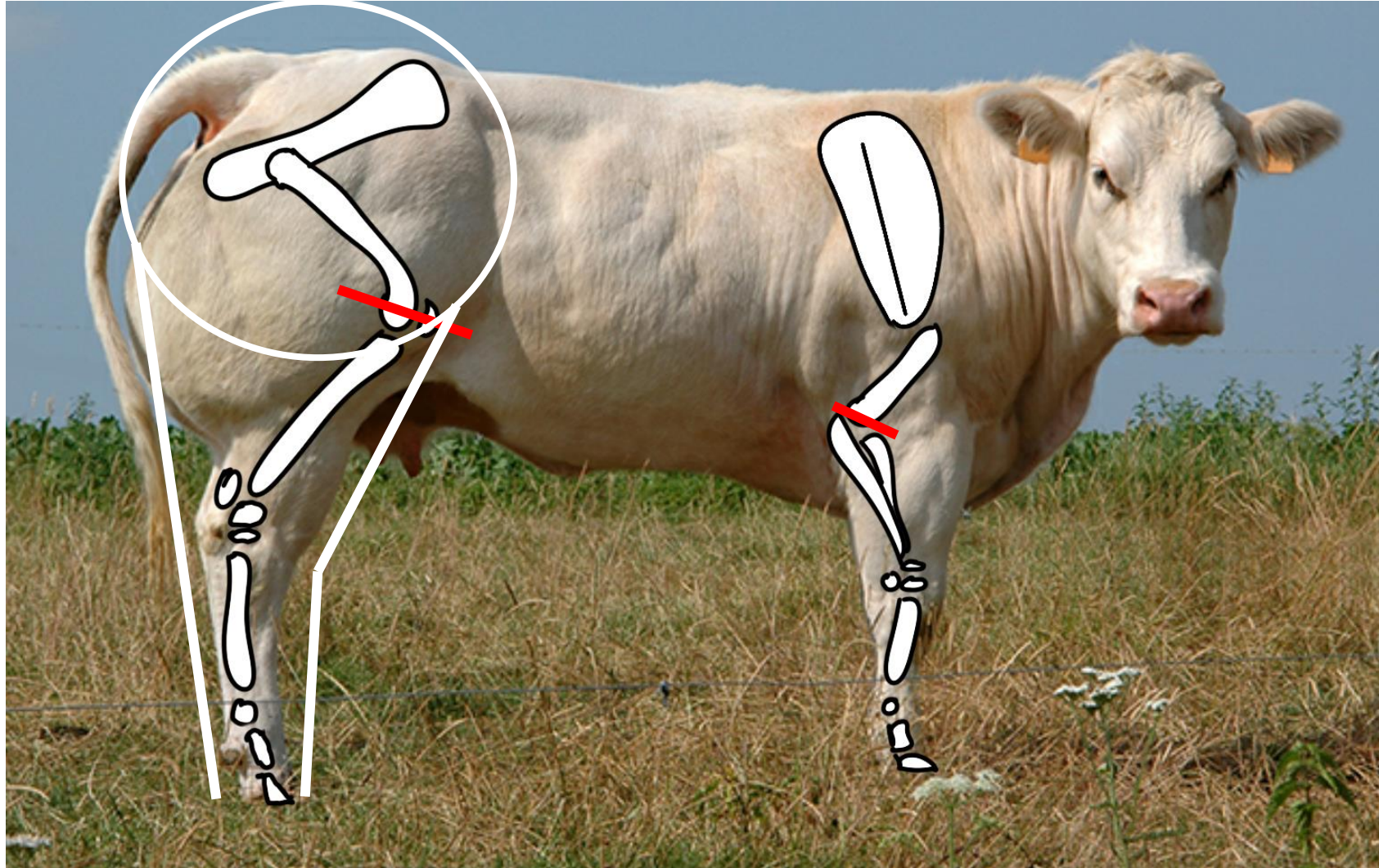




Introduction



Introduction



Aims

- Long term survival rate of Modified Thomas Splint
- Treatment success (= Slaughter)
- Characteristics
- Predisposing factors



Material & Methods

- SAP: Hospital database
- September 2013 - September 2020
- Modified Thomas Splint Cast (MTSC)





Material & Methods

- SAP: Hospital database
- September 2013 - September 2020
- Modified Thomas Splint Cast (MTSC)



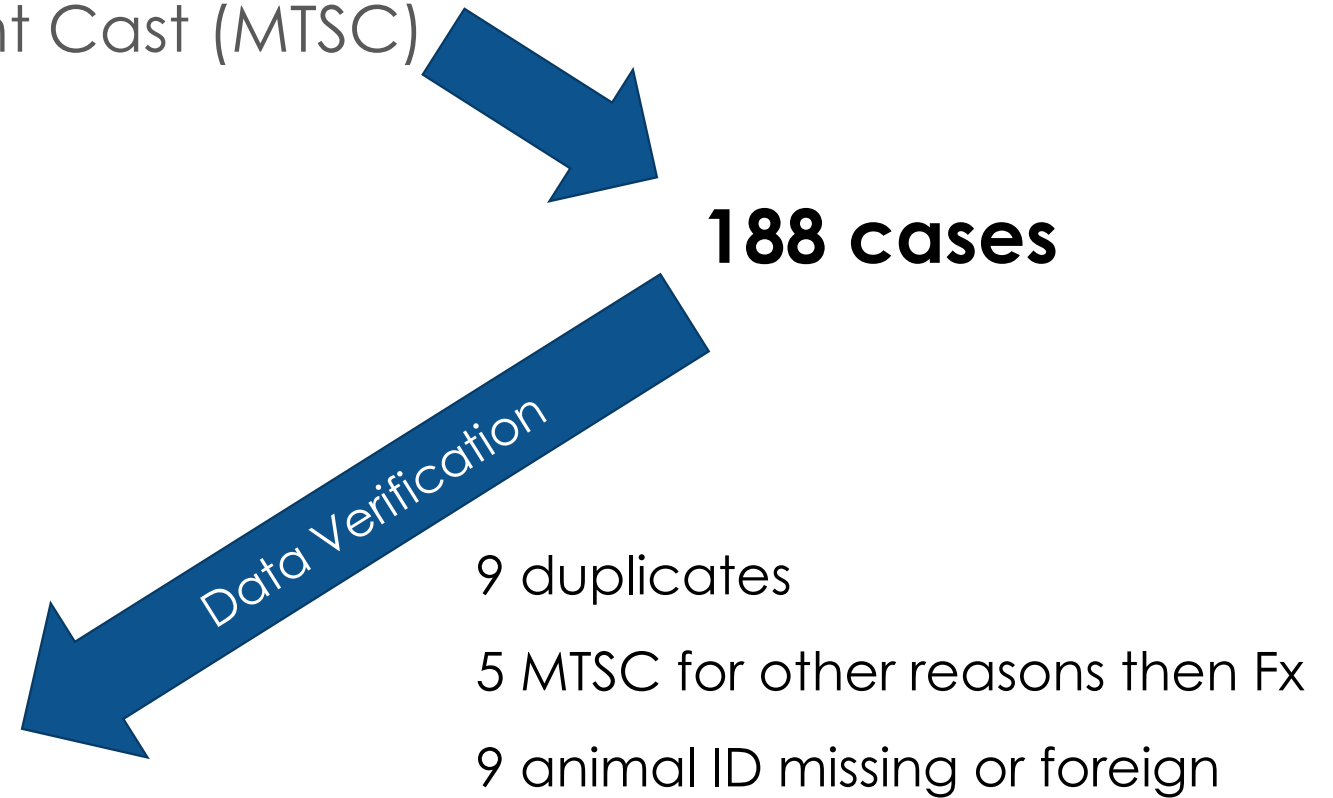
188 cases





Material & Methods

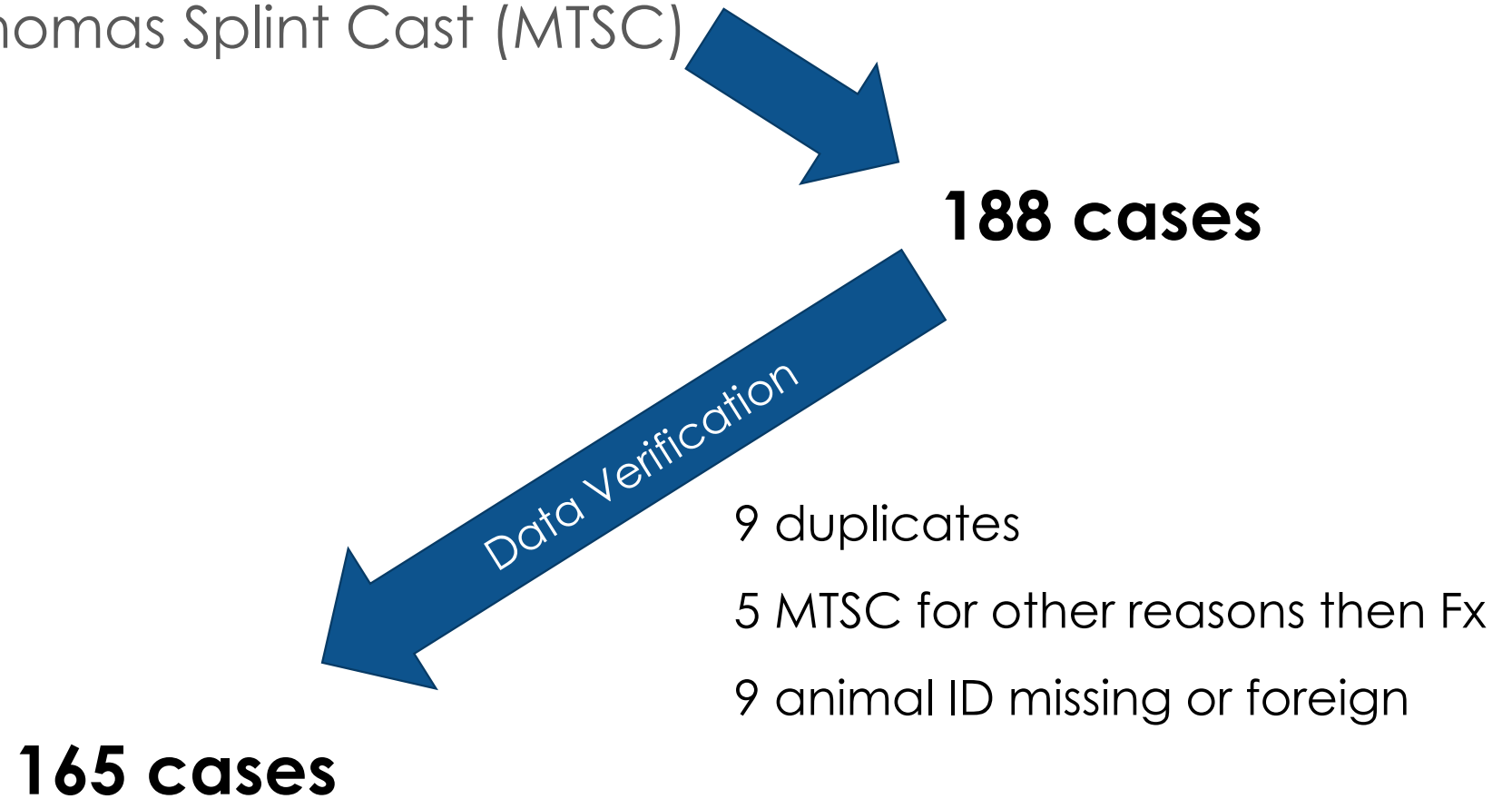
- SAP: Hospital database
- September 2013 - September 2020
- Modified Thomas Splint Cast (MTSC)





Material & Methods

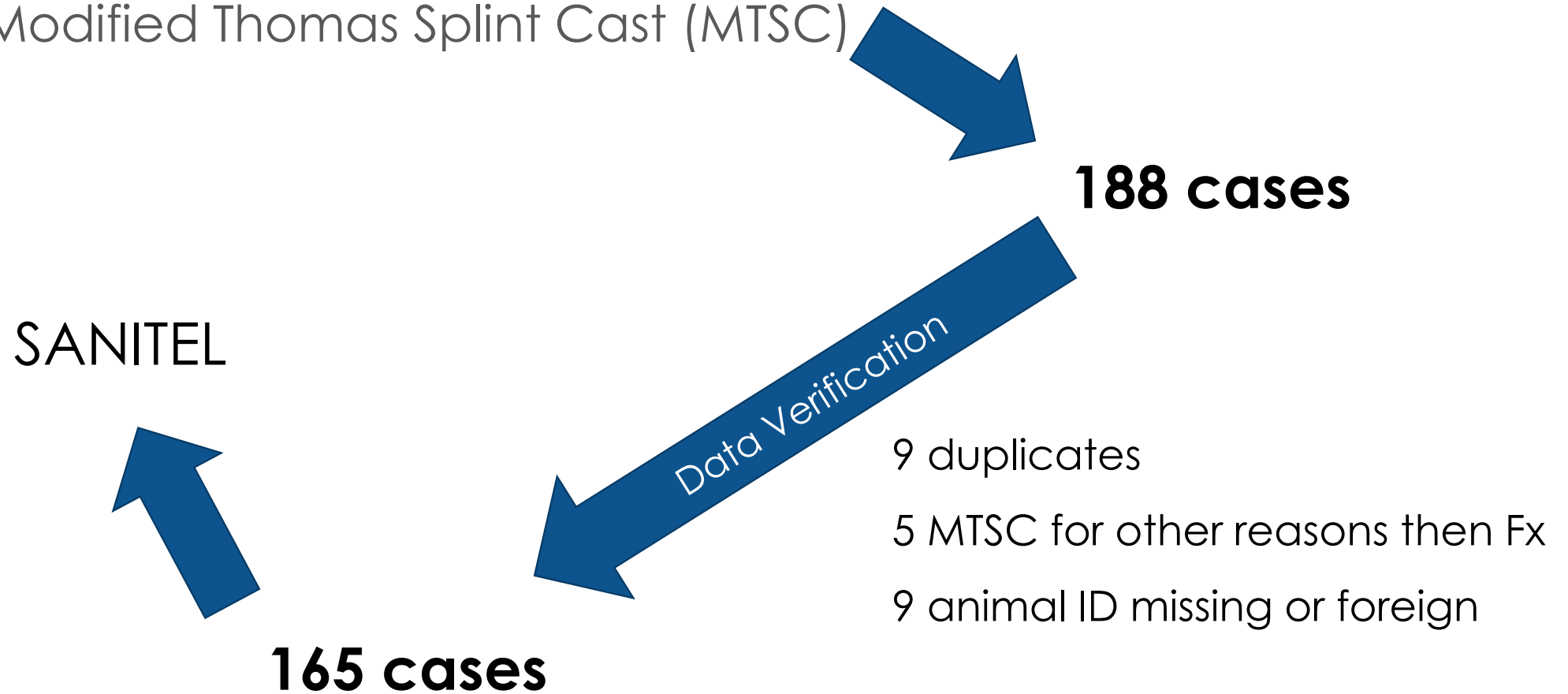
- SAP: Hospital database
- September 2013 - September 2020
- Modified Thomas Splint Cast (MTSC)





Material & Methods

- SAP: Hospital database
- September 2013 - September 2020
- Modified Thomas Splint Cast (MTSC)





Data retrieved

- SAP:
 - gender,
 - breed,
 - birth date, date of entry
 - site of fracture,
 - time since fracture,
 - cause of fracture



Data retrieved

- SAP:

- gender,
- breed,
- birth date, date of entry
- site of fracture,
- time since fracture,
- cause of fracture

- SANITEL:

- date and type of death
- follow-up until 6 months after placement of the MTSC for all animals
- follow-up until death or slaughter for animals deceased



Data retrieved

- SAP:

- gender,
- breed,
- birth date, date of entry
- site of fracture,
- time since fracture,
- cause of fracture

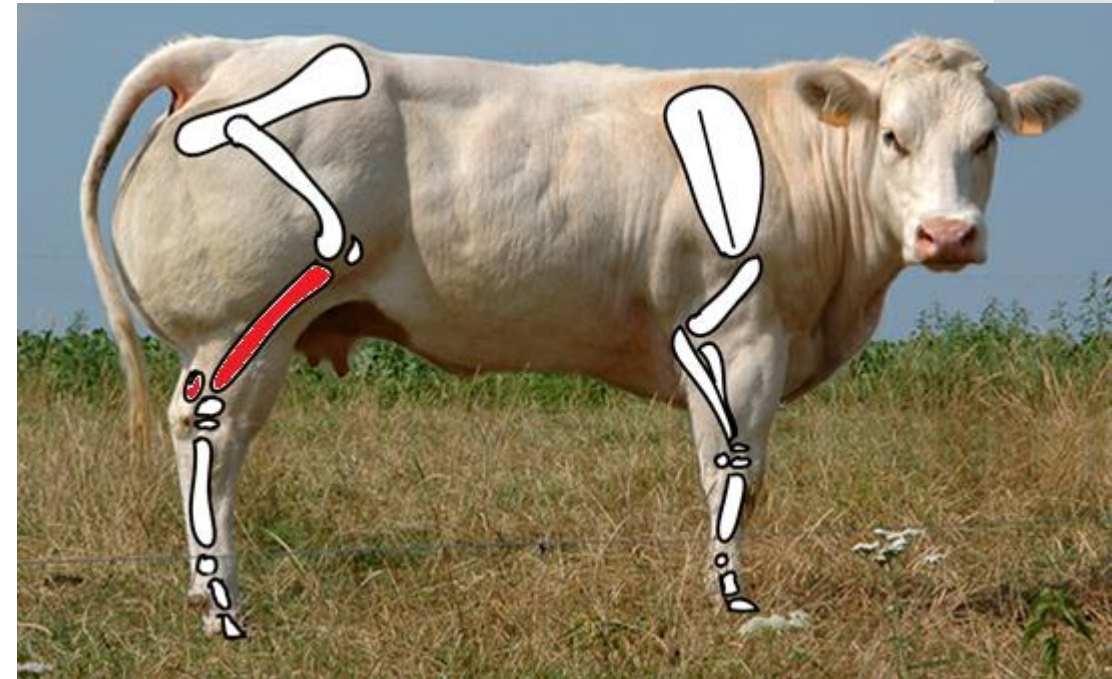
- SANITEL:

- date and type of death
- follow-up until 6 months after placement of the MTSC for all animals
- follow-up until death or slaughter for animals deceased

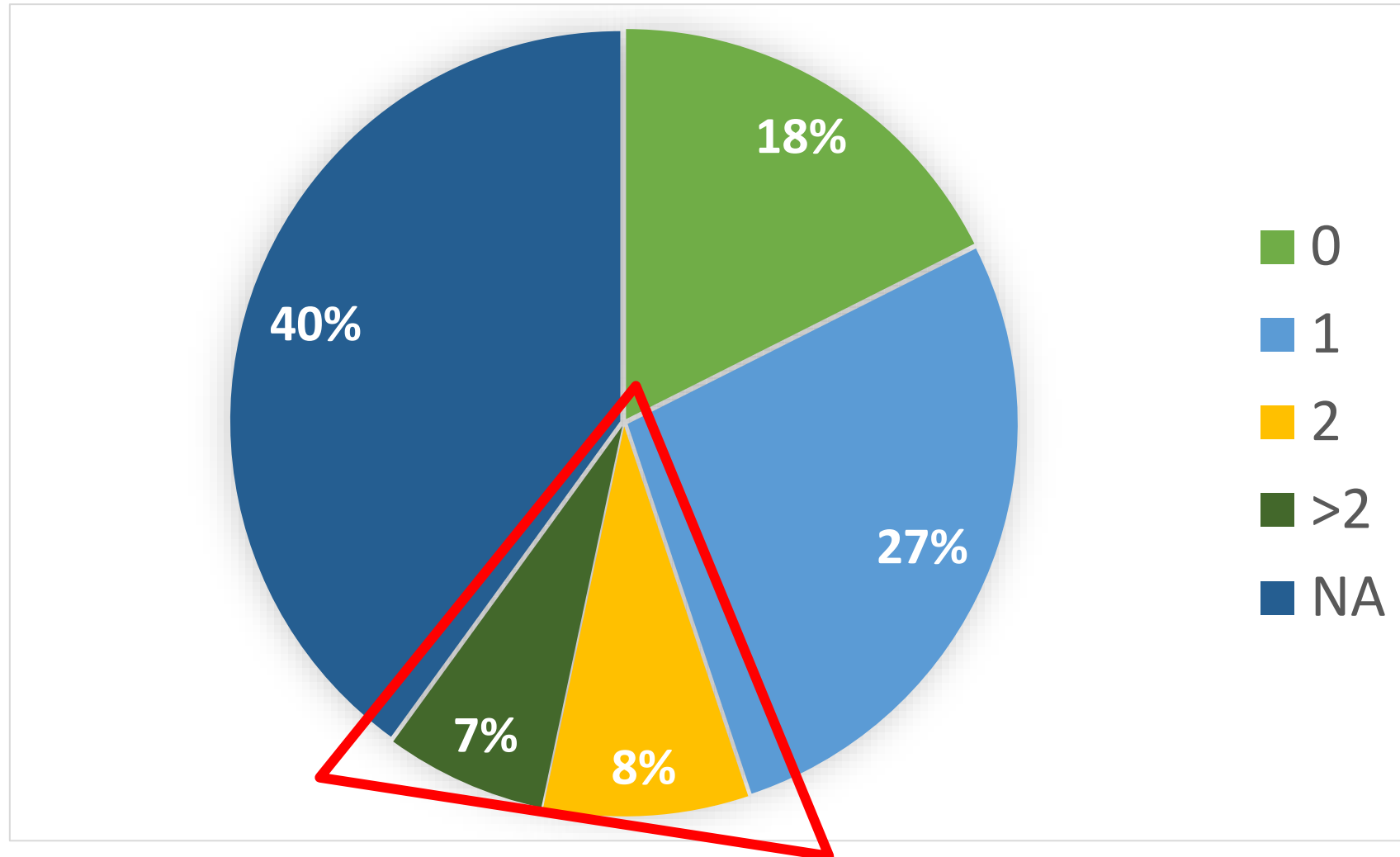
Excel & R

Results

- 80 % Tibia , 10% Calcaneus
 - 95% rear leg
 - No significant difference in survival
- Main causes (when known)
 - Manipulation (28)
 - Putting on pasture (21)
 - Animal in heat (6)
 - Stepped on after birth (5)
 - Trauma (5)
- >90% Belgian blue
- No gender difference

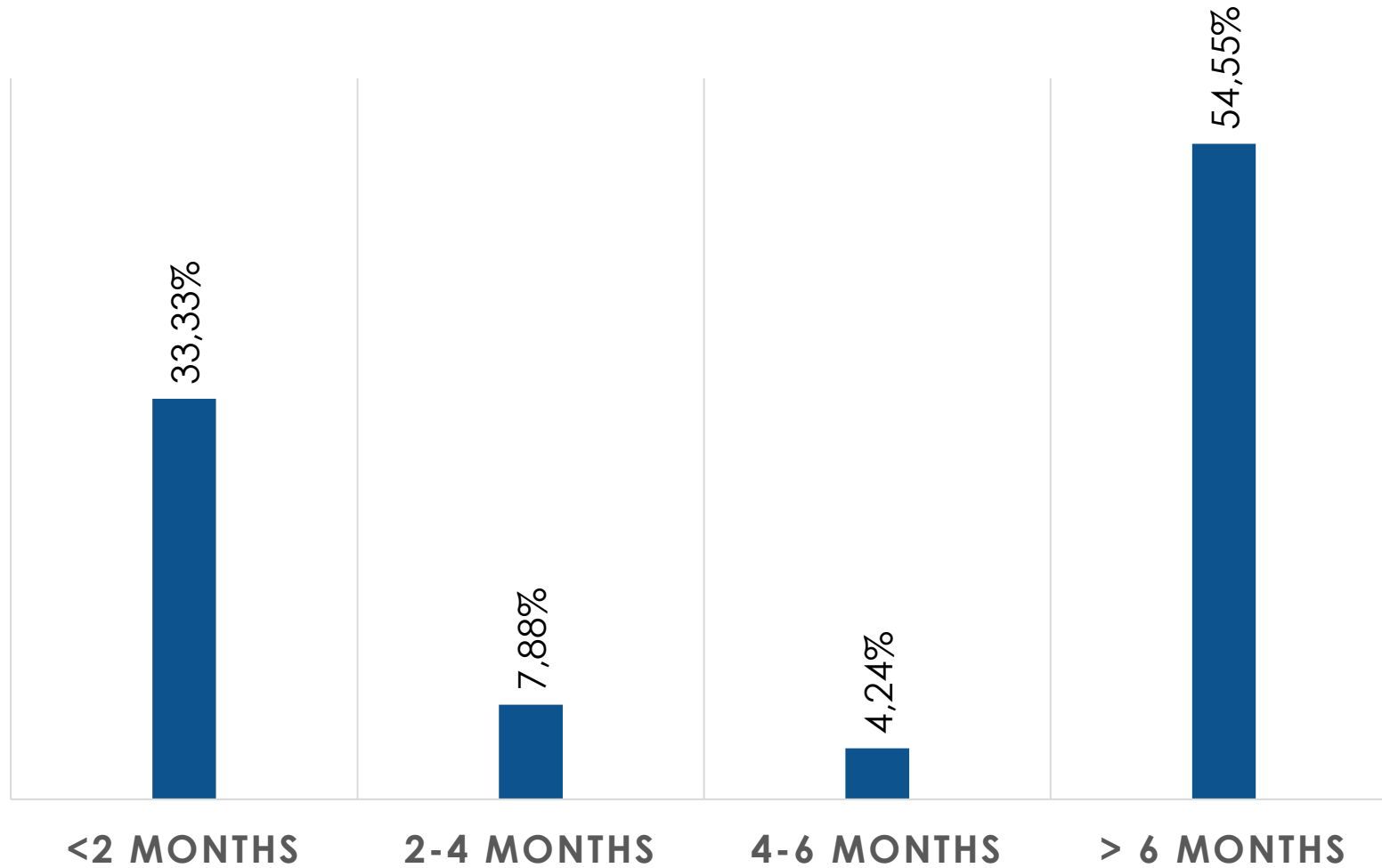


Days until intervention



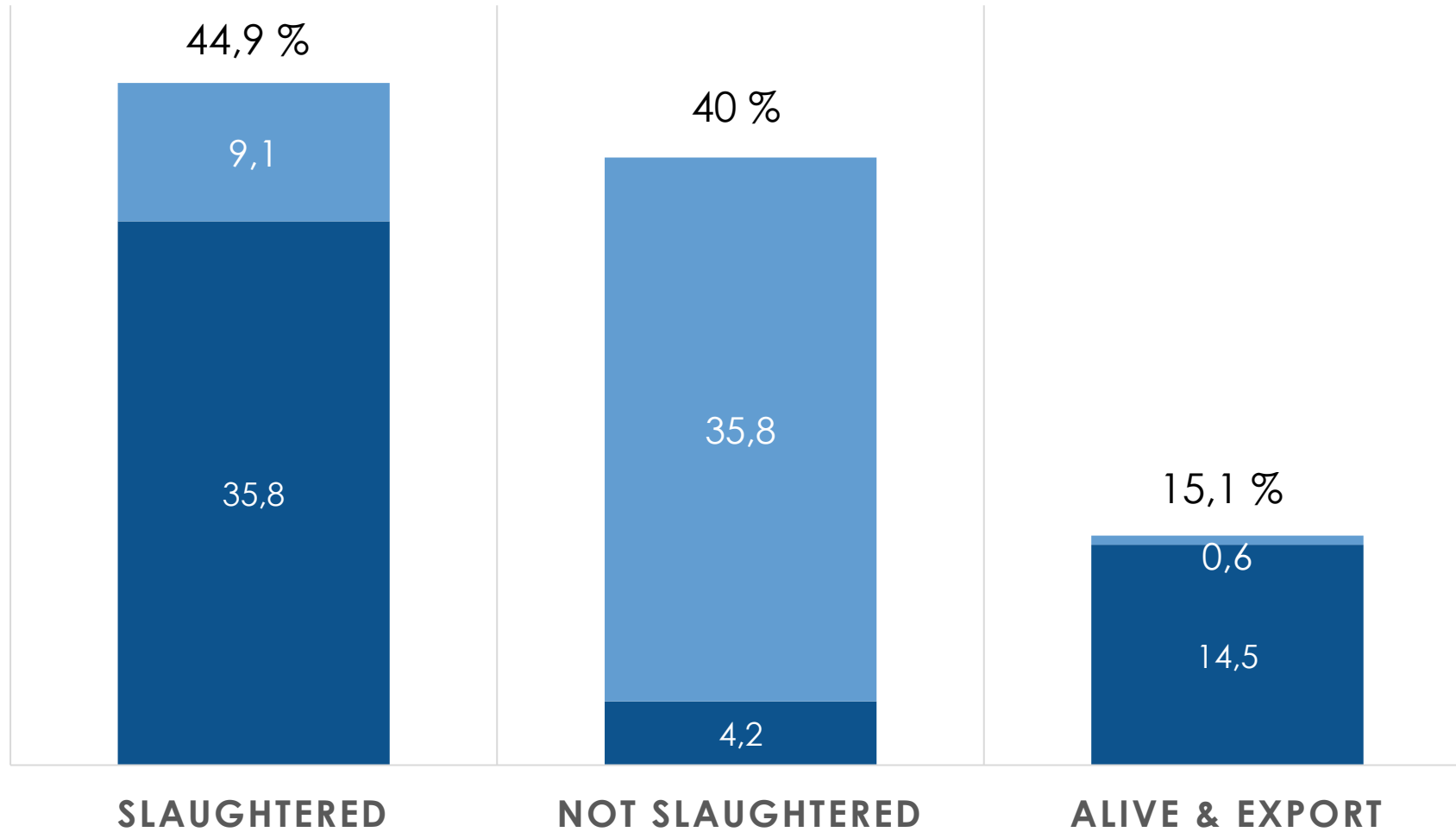


TIME SURVIVED AFTER CAST PLACEMENT

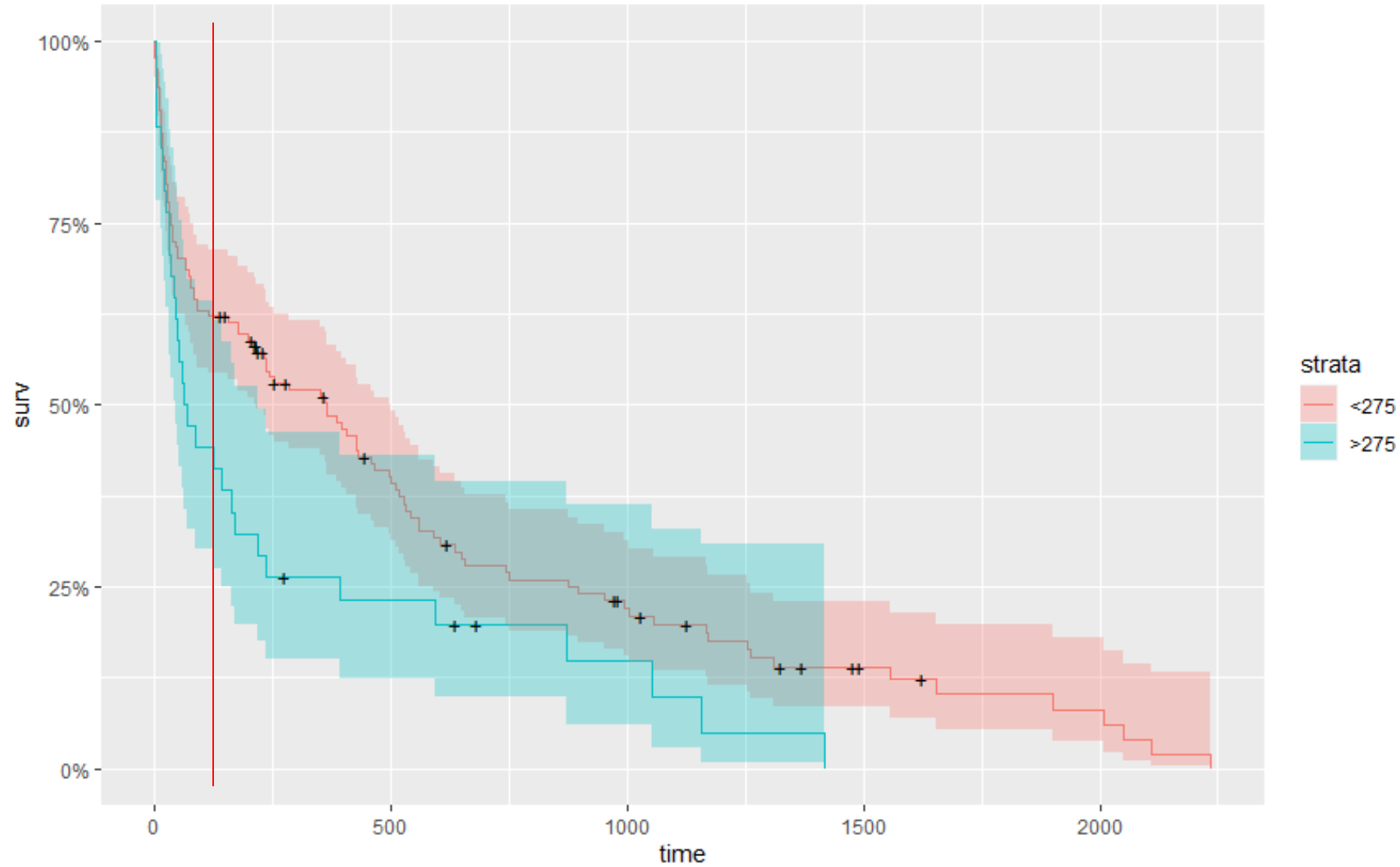


SLAUGHTER

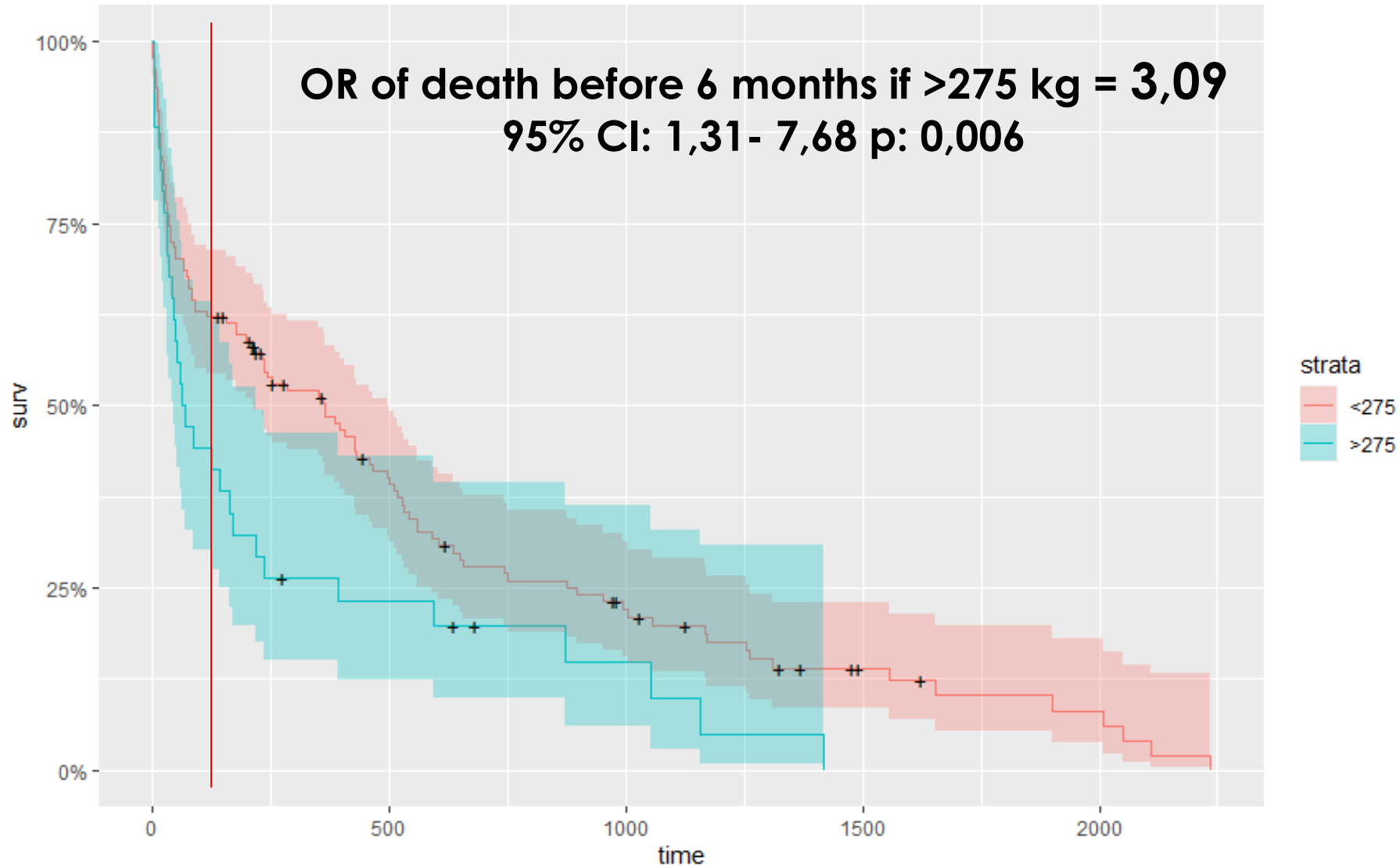
■ > 6 months ■ < 6 months



Weight



Weight





Conclusions

**Modified Thomas splints are a (relative) low cost option
when emergency slaughter is not an option**

- Prognosis = fair
 - > 50% Survival for over 6 months
 - 60 % Slaughtered, alive or export
- Weight > 275 kg = risk
- Waiting = welfare issue
- Tibia more fragile in BBB?

Questions



