

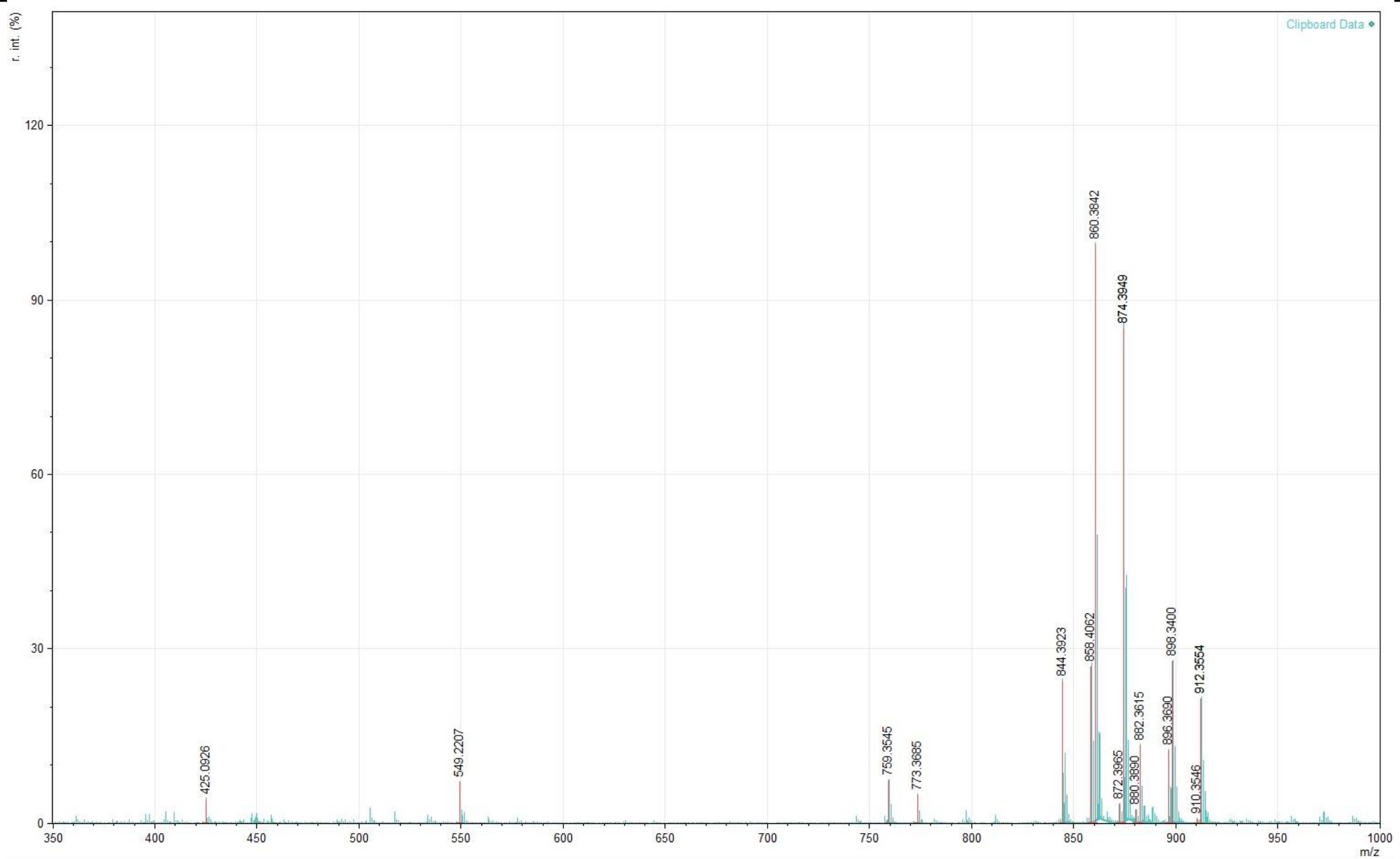
Fig. S1

Figure S1: Full-scan MS spectrum of the 5.52 min elution fraction. Rotihibin C: m/z 860.38 [M+H]⁺, m/z 882.36 [M+Na]⁺, m/z 898.34 [M+K]⁺; Unsaturated rotihibin C: m/z 858.41 [M+H]⁺, m/z 880.39 [M+Na]⁺, m/z 896.37 [M+K]⁺; Rotihibin D: m/z 874.39 [M+H]⁺, m/z 896.37 [M+Na]⁺, m/z 912.36 [M+K]⁺; Unsaturated rotihibin D: m/z 872.40 [M+H]⁺, m/z 910.35 [M+K]⁺; Rotihibin variant with shorter acyl chain: m/z 844.39 [M+H]⁺, m/z 882.36 [M+K]⁺.

Fig. S2

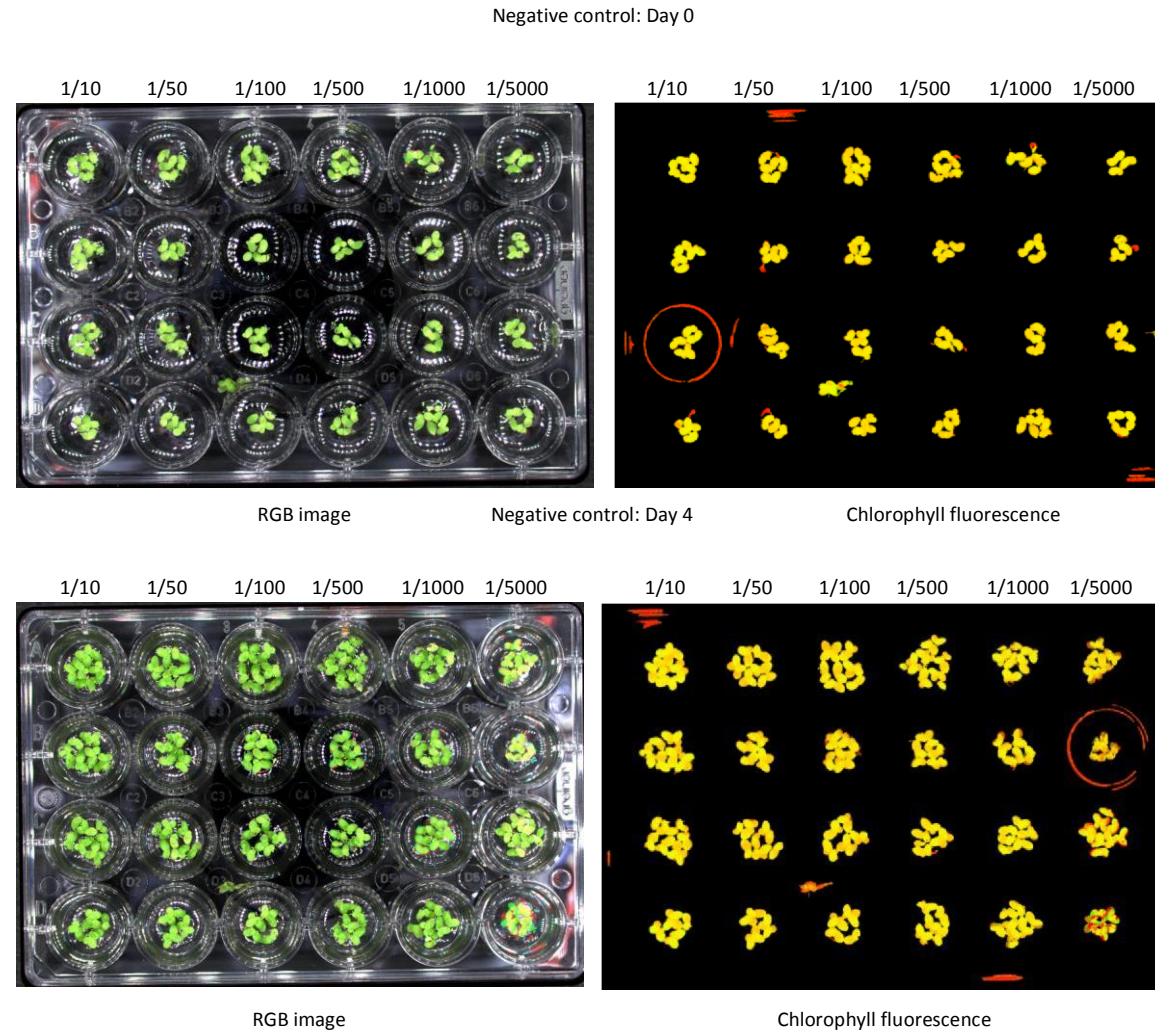


Figure S2: *Lemna minor* bioassay results, negative control (neighbouring HPLC peak)

Fig. S3

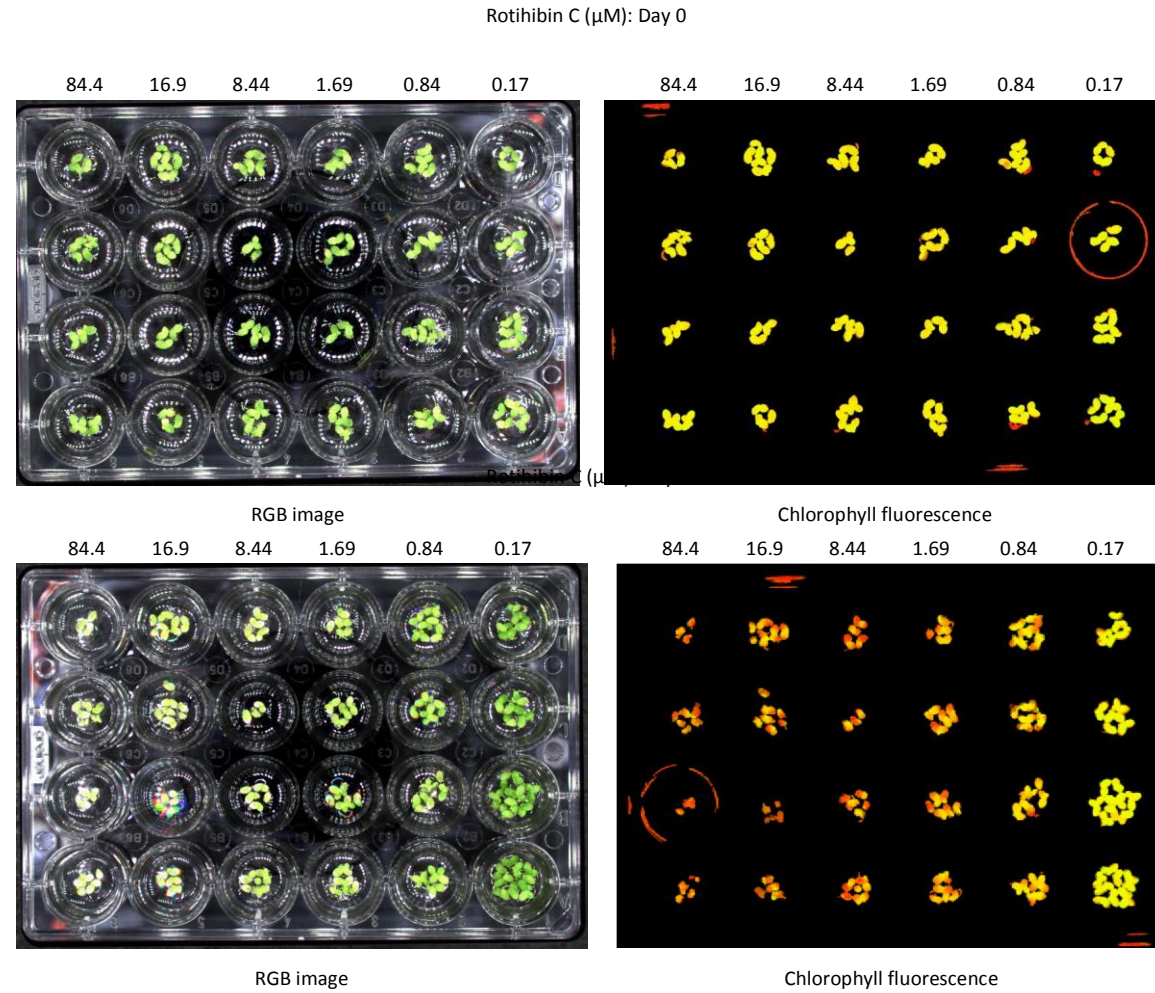


Figure S3: *Lemna minor* bioassay results, rotihibin C

Rotihibin D (μM): Day 0

Fig. S4

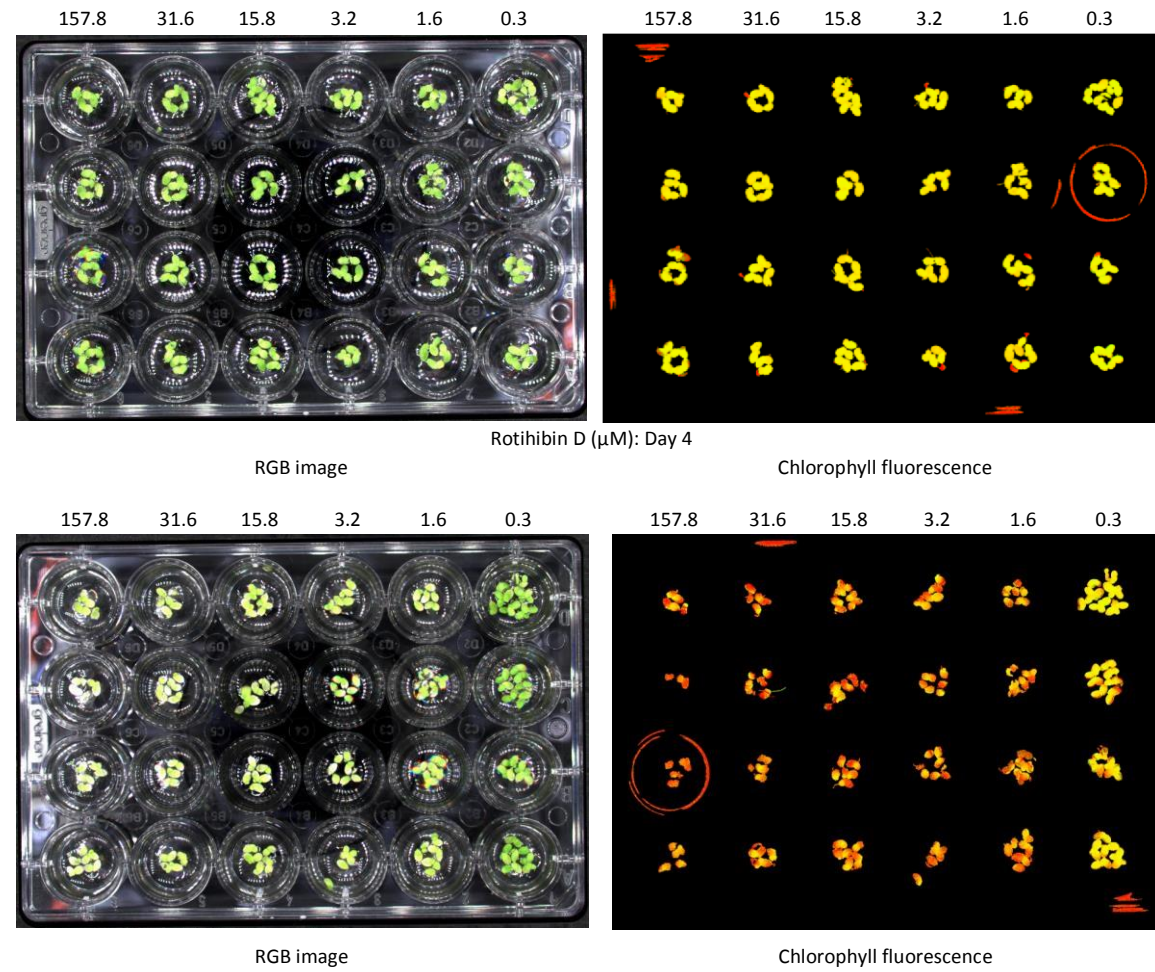


Figure S4: *Lemna minor* bioassay results, rotihibin D

Fig. S5

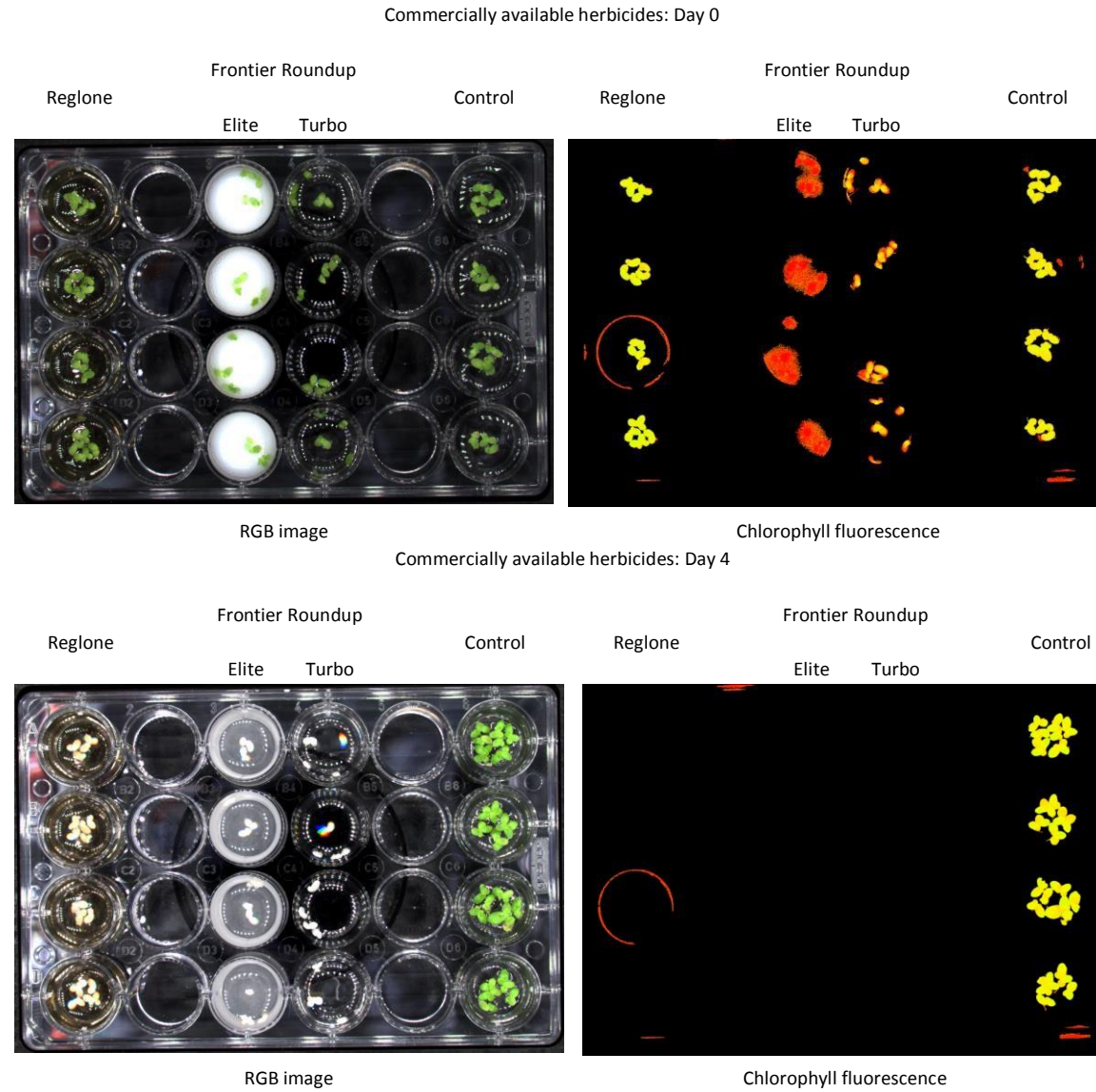


Figure S5: *Lemna minor* bioassay results, commercially available herbicides