



International symposium

*Urban wastelands: a form of urban nature?*



LIÈGE université  
Gembloux  
Agro-Bio Tech



GRAND HÔPITAL  
de CHARLEROI

# Grand Hôpital de Charleroi, inclusion of biodiversity in urban project

Kathleen Mercken, Sylvain Boisson, Julie Lebeau, Maxime Séleck,  
David Van Drooghenbroeck, Grégory Mahy



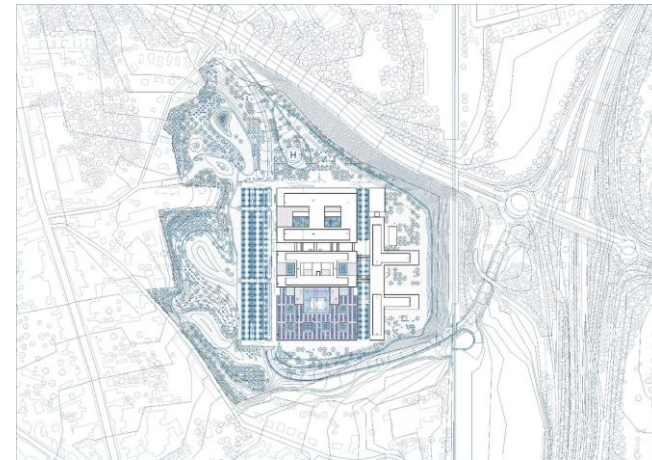


# International symposium *Urban wastelands: a form of urban nature?*



GRAND HÔPITAL  
de CHARLEROI

## Context







# Inventories 2014

- 130 plant species, 2 protected, 1 threatened but not protected
- 30 birds species, all protected
- 3 amphibian species, all protected
- 21 butterfly species
- 12 dragonfly, 1 vulnerable but not protected





International symposium  
*Urban wastelands: a form of urban nature?*



GRAND HÔPITAL  
 de CHARLEROI

# How to combine....



&



???







International symposium  
*Urban wastelands: a form of urban nature?*

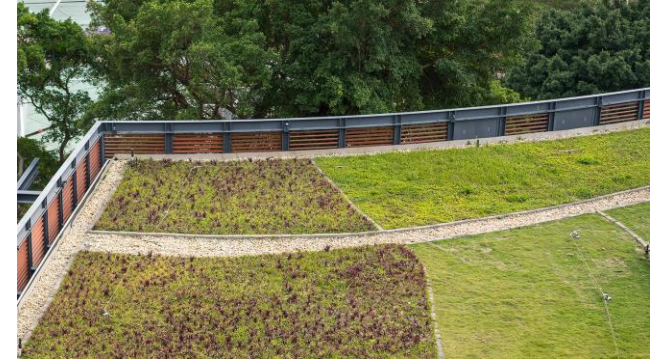


GRAND HÔPITAL  
de CHARLEROI

# Adapt

On the buildings

- Green roof
- Collect of plant species seeds



In the parc

- Big ponds, surrounded by reeds
- Reeds transfer
- Species transfer

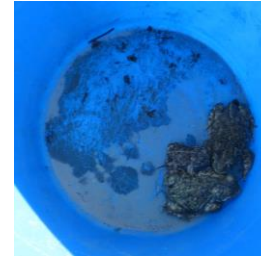




# Adapt

In the parc

- Small pioneer ponds and pioneer grasslands, for the netterjack toad.







# International symposium *Urban wastelands: a form of urban nature?*



GRAND HÔPITAL  
de CHARLEROI

## Participation







# Participation

## Biophilia...

...is the innately emot

isms.







# Difficulties





# Management







International symposium  
*Urban wastelands: a form of urban nature?*



LIÈGE université  
**Gembloux**  
 Agro-Bio Tech



GRAND HÔPITAL  
 de CHARLEROI

# Colloque BiodiverSanté



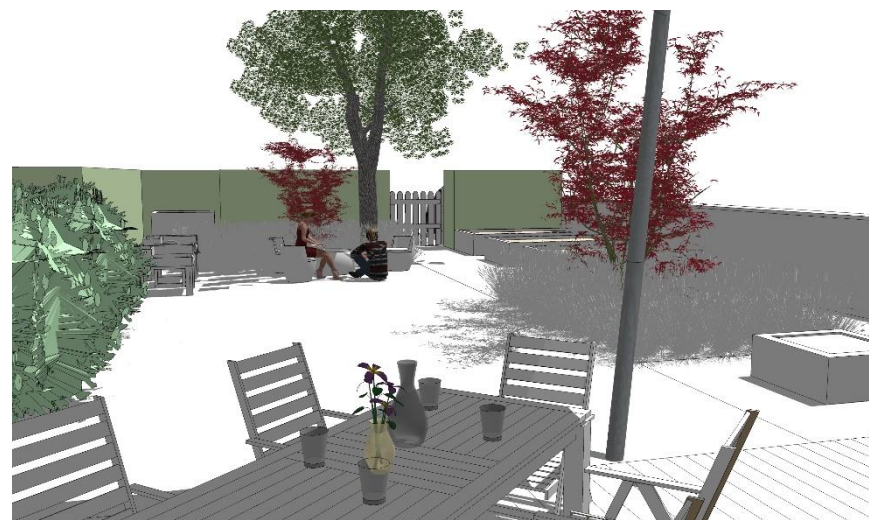
BiodiverSanté





# Therapeutic garden

Pilot experiment in the wellness home of GHdC







# Therapeutic garden



Participative process to define characteristics of a therapeutic garden linked to cancer pathologies

**Rest**

**Relaxation**

**Social contact**





# Therapeutic garden



Demand for a colored garden, that reminds the cycle of life

Medical and reintegration aspects, but reconciliables with hygiene measures and the patient condition



**Patient are looking for a securing environment,  
 incompatible with the biodiversity of urban wastelands**







International symposium  
*Urban wastelands: a form of urban nature?*



GRAND HÔPITAL  
de CHARLEROI

Thank you for your  
attention!

kathleen.mercken@uliege.be

g.mahy@uliege.be

