

H0LiCOW – XI. A weak lensing measurement of the external convergence in the field of the lensed quasar B1608+656 using *HST* and Subaru deep imaging

O. Tihhonova,¹ F. Courbin¹,^{1*} D. Harvey^{1,2}, S. Hilbert,^{3,4} A. Peel,^{1,5}
C. E. Rusu^{6,7}†, C. D. Fassnacht,⁷ V. Bonvin,¹ P. J. Marshall⁸, G. Meylan,¹ D. Sluse,⁹ S. H. Suyu,^{10,11,12}
T. Treu¹³‡ and K. C. Wong¹⁴

¹*Institut de Physique, Laboratoire d'Astrophysique, Ecole Polytechnique Fédérale de Lausanne (EPFL), Observatoire de Sauverny, CH-1290 Versoix, Switzerland*

²*Instituut-Lorentz for Theoretical Physics, Universiteit Leiden, Niels Bohrweg 2, NL-2333 CA Leiden, the Netherlands*

³*Exzellenzcluster Universe, Boltzmannstr 2, D-85748 Garching, Germany*

⁴*Ludwig-Maximilians-Universität, Universitäts-Sternwarte, Scheinerstr 1, D-81679 München, Germany*

⁵*AIM, CEA, CNRS, Université Paris-Saclay, Université Paris Diderot, Sorbonne Paris Cité, F-91191 Gif-sur-Yvette, France*

⁶*Subaru Telescope, 650 N Aohoku Pl, Hilo, HI 96720, USA*

⁷*Department of Physics, University of California, Davis, CA 95616, USA*

⁸*Kavli Institute for Particle Astrophysics and Cosmology, Stanford University, 452 Lomita Mall, Stanford, CA 94035, USA*

⁹*STAR Institute, Quartier Agora - Allée du six Août, 19c, B-4000 Liège, Belgium*

¹⁰*Max-Planck-Institut für Astrophysik, Karl-Schwarzschild-Str 1, D-85748 Garching, Germany*

¹¹*Institute of Astronomy and Astrophysics, Academia Sinica, 11F of ASMA, No 1, Section 4, Roosevelt Road, Taipei 10617, Taiwan*

¹²*Physik-Department, Technische Universität München, James-Frank-Straße 1, D-85748 Garching, Germany*

¹³*Department of Physics and Astronomy, University of California, Los Angeles, CA 90095, USA*

¹⁴*Kavli IPMU (WPI), UTIAS, The University of Tokyo, Kashiwa, Chiba 277-8583, Japan*

Accepted 2020 May 19. Received 2020 April 14; in original form 2019 March 29

ABSTRACT

We investigate the environment and line of sight (LoS) of the H0LiCOW (H_0 Lenses in COSMOGRAIL's Wellspring) lens B1608+656 using Subaru Suprime-Cam and the *Hubble Space Telescope* (*HST*) to perform a weak lensing analysis. We compare three different methods to reconstruct the mass map of the field, i.e. the standard Kaiser–Squires inversion coupled with inpainting and Gaussian or wavelet filtering, and GLIMPSE, a method based on sparse regularization of the shear field. We find no substantial difference between the 2D mass reconstructions, but we find that the ground-based data are less sensitive to small-scale structures than the space-based observations. Marginalizing over the results obtained with all the reconstruction techniques applied to the two available *HST* filters *F606W* and *F814W*, we estimate the external convergence, κ_{ext} , at the position of B1608+656 is $\kappa_{\text{ext}} = 0.11^{+0.06}_{-0.04}$, where the error bars correspond, respectively, to the 16th and 84th quartiles. This result is compatible with previous estimates using the number counts technique, suggesting that B1608+656 resides in an overdense LoS, but with a completely different technique. Using our mass reconstructions, we also compare the convergence at the position of several groups of galaxies in the field of B1608+656 with the mass measurements using various analytical mass profiles, and find that the weak lensing results favour truncated halo models.

Key words: gravitational lensing: weak – quasars: individual: B1608+656 – cosmology: cosmological parameters – distance scale.

1 INTRODUCTION

Time delays (TDs) in strongly lensed quasars allow one to determine the Hubble constant H_0 (e.g. Bonvin et al. 2017; Suyu et al. 2017; Birrer et al. 2019) independently of and complementary to other cosmological probes, including the cosmic microwave background

(CMB; Planck Collaboration XIII 2016), baryon acoustic oscillations (BAO) + CMB (Alam et al. 2017), weak lensing + BAO + big bang nucleosynthesis (BBN; Abbott et al. 2018), Cepheids and Type Ia supernovae (Freedman et al. 2012; Riess et al. 2016), megamasers (Reid et al. 2013), the giant ionized H_2 regions (Fernández Arenas et al. 2018), and standard sirens such as gravitational waves (Abbott et al. 2017).

The original idea by Refsdal (1964) proposes to measure the TDs in gravitationally lensed and photometrical variable sources. When this source is a quasar, the light curves of its lensed images display

* E-mail: frederic.courbin@epfl.ch

† Subaru Fellow.

‡ Packard Fellow.

similar variations, but shifted in time by the TD. This TD is due to (1) the difference in length between the light paths to its lensed images and (2) the potential well of the lensing galaxy(ies). It is proportional to the combination of the three angular diameter distances to the source, to the lens, and between the lens and the source. This distance is called the TD distance (e.g. Schneider, Kochanek & Wambsganss 2006; Suyu et al. 2010), which is the quantity that TD measures. The TD distance is then inversely proportional to the Hubble constant, H_0 , and has a weaker dependence on other cosmological parameters, notably the curvature and the dark energy (e.g. Coe & Moustakas 2009).

In practice, however, the integrated mass from galaxies and large-scale structures all the way to the redshift of the lensed quasar also contribute to the lensing potential and can bias the Hubble if not taken into account (Keeton & Zabludoff 2004; Jaroszyński & Skowron 2016; McCully et al. 2017). In gravitational lensing, this mass, which can be seen as an external contribution to the potential of the lens, is expressed as a dimensionless surface mass density called external convergence, κ_{ext} . If H_0^{model} is the value predicted by a lens model that does not incorporate explicitly the line-of-sight (LoS) contribution, then the actual value of H_0 is

$$H_0 = (1 - \kappa_{\text{ext}}) \times H_0^{\text{model}}. \quad (1)$$

A positive value of κ_{ext} corresponds to an LoS that is denser than the average mass density of the rest of the Universe and the true value of H_0 is overestimated by the model. Conversely, a negative value of κ_{ext} corresponds to an underdense LoS, and the models underestimate the Hubble constant.

The COSMOGRAIL (the COSmological MONitoring of GRAvitational Lenses) collaboration (Courbin et al. 2005) measures TDs in lensed quasars using decade-long optical light curves of the quasar images (e.g. Eulaers et al. 2013; Tewes et al. 2013; Bonvin et al. 2017), and has recently adopted a new high-cadence strategy to measure TDs in only one observing season (Bonvin et al. 2018; Courbin et al. 2018). These TDs are used by the H0LiCOW (H_0 Lenses in COSMOGRAIL’s Wellspring) collaboration (Suyu et al. 2017) to measure the Hubble constant.

Using deep sharp *Hubble Space Telescope* (*HST*) and adaptive optics images in combination with dynamics of the main lensing galaxy and spectroscopy of field galaxies (e.g. Ding et al. 2017; Sluse et al. 2017; Wong et al. 2017), H0LiCOW has measured H_0 to 4 per cent precision (Bonvin et al. 2017) using three strongly lensed systems: B1608+656, RXJ1131–1231, and HE 0435–1223. This was improved to 3 per cent by adding the fourth system SDSS 1206+4332 (Birrer et al. 2019). For each of these lenses, the effect of the LoS was taken into account using the galaxy number counts technique (Suyu et al. 2010, 2013; Rusu et al. 2017; Birrer et al. 2019) in combination with ray tracing in the Millennium Simulation (MS; Springel et al. 2005; Hilbert et al. 2009). This statistical approach measures the galaxy number density in the vicinity of the lens and compares it to reference fields, hence determining whether the LoS is over- or underdense compared to average. Similar LoS are then searched for in the MS. The external convergence calculated for these LoS in the MS is then used to obtain a probability distribution for κ_{ext} .

In this work, we use a different approach to constrain κ_{ext} . We employ weak gravitational lensing, which is sensitive to both luminous and dark matter, to characterize the LoS to the lensed quasar. In general, the external convergence κ_{ext} to the quasar and the convergence κ_{wl} inferred from weak lensing mass reconstruction differ, but are statistically dependent. When knowing this dependence, one can thus constrain κ_{ext} by measuring κ_{wl} and computing

the conditional probability $P(\kappa_{\text{ext}}|\kappa_{\text{wl}})$. We therefore select LoS in the MS with a weak lensing signal similar to the measured one. For these LoS, we then compute the external convergence to the quasar redshift and use these values to estimate $P(\kappa_{\text{ext}}|\kappa_{\text{wl}})$. This approach was previously applied to the HE 0435–1223 system in Tihhonova et al. (2018), showing no significant LoS contribution for this specific object and agreeing with the galaxy number counts technique. We now apply the method to B1608+656, which is the first lens analysed in the H0LiCOW sample. For this purpose, we use deep *HST* data in addition to ground-based Subaru data.

While HE 0435–1223 was found to reside in a slightly underdense environment (Rusu et al. 2017; Tihhonova et al. 2018), somewhat atypical for strong gravitational lenses (Collett & Cunnington 2016) as they are massive galaxies, B1608+656, on the contrary, was found to lie in a crowded field (Fassnacht, Koopmans & Wong 2011), making this system interesting for our method. While the contribution of the external convergence on the determination of the Hubble constant is marginal in the case of HE 0435–1223 (Rusu et al. 2017; Tihhonova et al. 2018), it gets as high as 10 per cent for B1608+656 if neglected (Suyu et al. 2010). This makes a complementary and independent analysis even more important.

The paper is organized as follows. Section 2 reminds the main suite of techniques adopted to reconstruct our convergence maps. Section 3 presents the ground-based Subaru data and the *HST* data. In Section 4, we describe the selection of galaxies used to measure the weak lensing signal and the resulting convergence maps are shown in Section 5. Section 6 assesses the impact of the redshift distribution of the galaxy selection. Our results and their comparison with previous works are detailed in Section 7. Finally, we conclude in Section 10.

We adopt a flat Λ CDM cosmology with $\Omega_{\text{m}} = 0.3$, $\Omega_{\Lambda} = 0.7$, and $H_0 = 70 \text{ km s}^{-1} \text{ Mpc}^{-1}$ when producing mocks of observations. Note that the details of the cosmology chosen here have no significant impact on the measured κ_{ext} .

2 MASS-MAPPING METHODOLOGY

The goal of this work is to use weak gravitational lensing to constrain the dimensionless surface mass density, i.e. the convergence κ_{ext} , at the position on the sky of the quadruply imaged quasar B1608+656. A detailed account of the weak lensing formalism can be found in Bartelmann & Schneider (2001) and is also explained in Tihhonova et al. (2018). It can be summarized as follows.

When expressed in units of the critical surface mass density Σ_{crit} , the convergence seen by a source at redshift z_s is given by

$$\kappa(\boldsymbol{\theta}, z_s) = \int_0^{z_s} \frac{\Sigma(\boldsymbol{\theta}, z)}{\Sigma_{\text{crit}}} dz, \quad (2)$$

where $\boldsymbol{\theta}$ is the 2D angular position on the sky, $\Sigma(\boldsymbol{\theta}, z)$ is the surface mass density in the redshift interval dz , and the critical surface mass density Σ_{crit} is

$$\Sigma_{\text{crit}} = \frac{c^2}{4\pi G} \frac{D_{\text{os}}}{D_{\text{od}} D_{\text{ds}}}. \quad (3)$$

D_{od} , D_{ds} , and D_{os} are the angular diameter distances between the observer and the deflector, the deflector and the source, and the observer and the source, respectively.

The background sources used in weak lensing span a redshift interval with a given distribution $p(z_s)$. The cumulative convergence of such a distribution reads

$$\kappa(\boldsymbol{\theta}) = \int_0^{z_{\text{max}}} \kappa(\boldsymbol{\theta}, z_s) p(z_s) dz_s, \quad (4)$$

where the integration is carried along the LoS up to a maximum redshift z_{\max} .

2.1 Kaiser–Squires mass reconstruction and inpainting

In the weak lensing regime, foreground lenses only slightly distort the apparent shape of galaxies located further away, i.e. the sources. This small distortion can be measured in practice as a change in ellipticity of the source galaxies. This is known as the complex shear, $\gamma(\boldsymbol{\theta})$, at any angular position $\boldsymbol{\theta}$ on the plane of the sky. This shear field can be used to reconstruct the underlying convergence field $\kappa(\boldsymbol{\theta})$ as first proposed by Kaiser & Squires (1993, hereafter **KS**), who solve for the equation

$$\kappa(\boldsymbol{\theta}) = \frac{1}{\pi} \int d^2\boldsymbol{\theta}' \Re[D^*(\boldsymbol{\theta} - \boldsymbol{\theta}')\gamma(\boldsymbol{\theta}')], \quad (5)$$

where $D(\boldsymbol{\theta}) = -(\theta_1 - i\theta_2)^{-2}$ is a complex convolution kernel.

In practice, the shear at any given position on the sky is estimated by measuring the mean complex ellipticity of galaxies in spatial bins, which size will affect the spatial resolution of the mass maps as well as their signal to noise. In addition, some source galaxies are masked by bright stars or blended with other galaxies, so that the data used for the reconstruction are incomplete.

For this reason we use the inpainting technique, implemented in the FASTLENS¹ package (Pires et al. 2009). The core of the technique is to extrapolate the existing data using a sparsity prior. It assumes that there exists a transformation, where the full data (i.e. as if no source galaxy was lost) are sparser than the actual data available for the reconstruction. This permits to increase the binning of the shear map, and therefore the final resolution, so that there is approximately one galaxy per space element. Note, however, that we are not using the inpainted data in the final results, as it is just a statistical extrapolation used to reduce noise. In addition, there are no missing source galaxies at the position of B1608+656 in our Subaru and *HST* images.

The inpainting technique does not fully remove the noise and the convergence field produced from equation (5) still needs filtering. Originally, **KS** applied a Gaussian kernel preserving the noise Gaussianity, but washing out the small spatial scales in the reconstructed maps. In this work, we use a Gaussian filter alongside the multiscale entropy filtering (MSE; Starck & Murtagh 2006), which is a non-linear Bayesian filtering technique based on wavelets. We use the MSE algorithm implemented in the MRLENS² software (Starck, Pires & Réfrégier 2006). The noise level is controlled by the proportion of false discoveries (PFD) parameter α (Miller et al. 2001), which determines the fraction of the peaks detected as real, but which are in reality due to noise. Setting $\alpha = 0.01$ means that 1 per cent of the detected peaks are in fact noise (see page 6 of Miller et al. 2001).

2.2 Mass reconstruction using GLIMPSE

The **KS** methods require to work that the shear field is measured on a regular grid, resulting in loss of spatial resolution and in possible aliasing of signals changing artificially the frequency due to the arbitrary binning applied to the data. This can be avoided by using a method that considers the shear field measured at the position of

each individual source galaxy and that involves sparse regularization techniques.

Such an approach is implemented in the GLIMPSE³ algorithm (Lanusse et al. 2016). GLIMPSE uses a multiscale wavelet-based sparsity prior to solve the regularization problem, while performing a denoising at the same time. The trade-off between a fidelity term and regularization term is determined with a thresholding parameter λ , i.e. a Lagrange parameter. Small λ values preserve small amplitude coefficients in the wavelet domain, with the risk that they could potentially be due to noise. Larger values of λ leave only the most significant peaks while potentially removing small amplitude signals.

GLIMPSE can incorporate higher order distortions such as flexion together with the shear to recover the high-resolution convergence maps. However, in this work we only use shear data. GLIMPSE is well suited for recovering cluster information (Peel, Lanusse & Starck 2017), and was shown to outperform the standard Kaiser–Squires method with Gaussian filtering in both the convergence field reconstruction and the peak statistics when applied to the Dark Energy Survey Science Verification data (Jeffrey et al. 2018).

3 OBSERVATIONS AND DATA REDUCTION

The quadruply imaged quasar B1608+656 was discovered in the Cosmic Lens All-Sky Survey (CLASS; Myers et al. 1995, 2003; Browne et al. 2003). The redshift of the source is $z_s = 1.394$ (Fassnacht et al. 1996), and the redshift of the two merging lens galaxies is $z_1 = 0.6304$ (Myers et al. 1995), both being part of a small group with ≈ 10 confirmed members (Fassnacht et al. 2006). We use ground-based observations with the Subaru telescope as well as imaging with the *HST* to estimate the convergence field around the gravitational lens system B1608+656 and evaluated the impact on the measured Hubble constant from the TDs in this system.

3.1 Subaru Suprime-Cam imaging

We use multiband, wide-field imaging observations around B1608+656 at ultraviolet and optical wavelengths. The ground-based data are obtained with the Subaru Telescope (PI. C. Fassnacht) and the Canada–France–Hawaii Telescope (CFHT; PI. S. Suyu, run ID 14AT01), as detailed in Table 1. The CFHT MegaCam data are taken from the CFHT archive pre-reduced and photometrically calibrated with standard techniques. The Subaru Suprime-Cam data are first reduced with SDFRED1 (Yagi et al. 2002; Ouchi et al. 2004), and then processed with SCAMP (Bertin 2006) to achieve a consistent astrometric and photometric calibration, matching the CFHT data. Finally, both data sets are resampled with SWARP (Bertin et al. 2002) to a 0.2 arcsec pixel scale, corresponding to the (larger) Suprime-Cam native pixel scale. We calibrate the Suprime-Cam data using observations of a Sloan Digital Sky Survey star field, taken during the same night. Finally, we correct for galactic and atmospheric extinction following Schlafly & Finkbeiner (2011) and Buton et al. (2012), respectively.

To measure the shape of source galaxies, we use the deep and sharp Subaru Suprime-Cam *r*-band image. The field of view is 34 arcmin \times 27 arcmin, as shown in Fig. 1, and pixel scale of 0.2 arcsec. Before doing any shape measurement, we subtract the sky background using the *mr_background* algorithm, which is part of the multiresolution analysis software.⁴ The choice of the parameters

¹<http://www.cosmostat.org/software/fastlens/>

²<http://www.cosmostat.org/software/mrlens/>

³<http://www.cosmostat.org/software/glimpse>

⁴<http://www.multiresolutions.com/mr/>

Table 1. Summary of the ground-based observations with Subaru/Suprime-Cam and CFHT/MegaCam.

Telescope/instrument	Pixel scale (arcsec)	Filter	Exposure (s)	Airmass	Seeing (arcsec)	Observation date
CFHT/MegaCam	0.187	<i>u</i>	50 × 494	1.4–2.0	~0.8	2014 Apr 26–June 30
Subaru/Suprime-Cam	0.200	<i>g</i>	5 × 120	~1.6	~0.75	2014 Mar 1
Subaru/Suprime-Cam	0.200	<i>r</i>	16 × 300	~1.5	~0.75	2014 Mar 1
Subaru/Suprime-Cam	0.200	<i>i</i>	5 × 120	~1.4	~0.95	2014 Mar 1

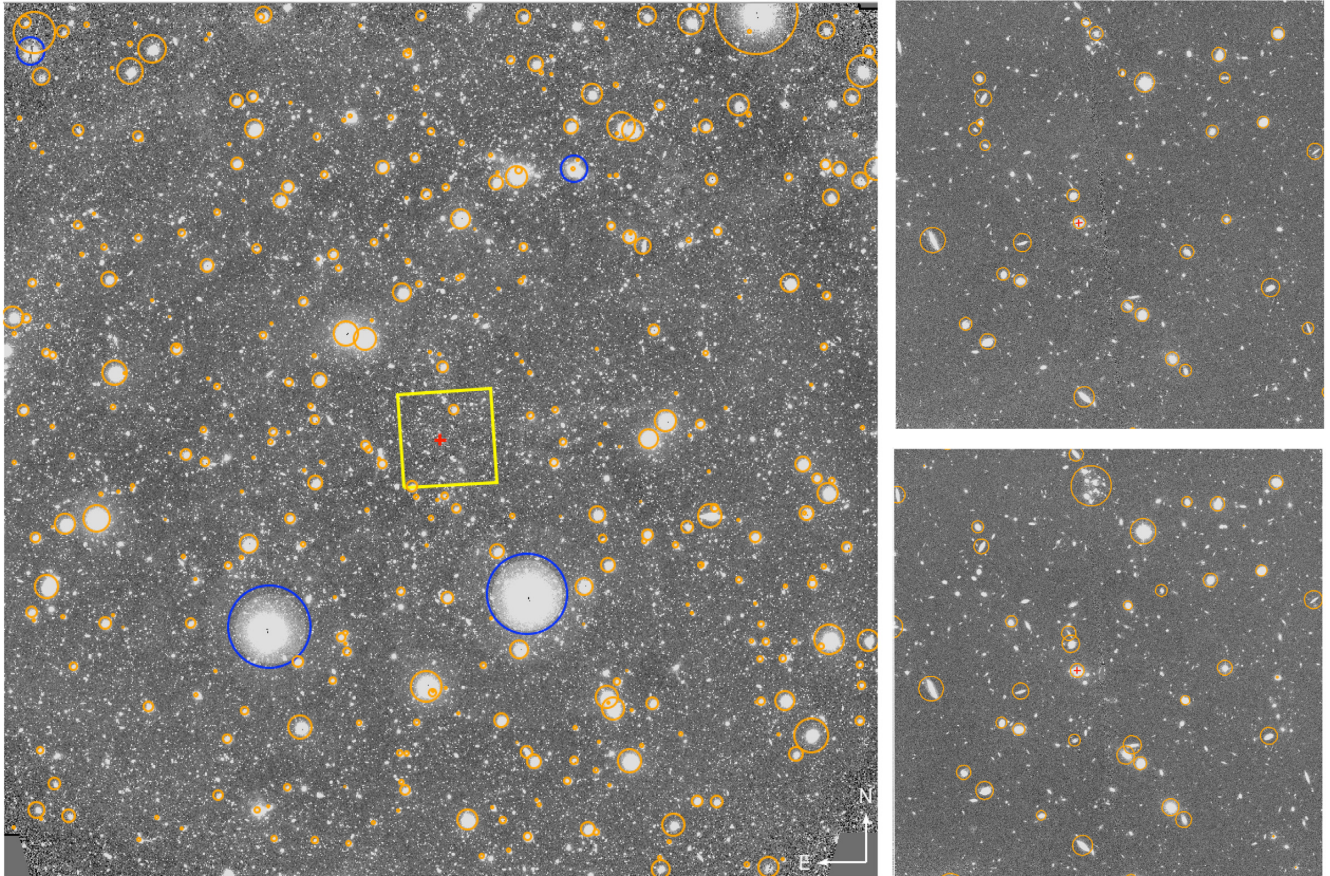


Figure 1. The left-hand panel shows the Subaru Suprime-Cam *r*-band $0.5^\circ \times 0.5^\circ$ field with B1608+656 located in the middle. North is up and East is left. The yellow square in the centre delimits the $3.21 \text{ arcmin} \times 3.21 \text{ arcmin}$ extent of the *HST* data, shown in the right-hand panel with the *F606W* filter on the top and the *F814W* filter in the bottom. The red cross shows the position of B1608+656. The orange and blue circles indicate the automatic and manual masks for the saturated objects. The final galaxy density of the sources adopted for the weak lensing analysis is 14 and 220 gals arcmin $^{-2}$ for the ground and the space data, respectively.

is done in the same way as in Tihhonova et al. (2018). We also mask all saturated objects detected with the SEXTRACTOR software⁵ (Bertin & Arnouts 1996). In doing this, we set the radius of the circular masks to be $r = 2 \times \text{FWHM_IMAGE}$, where FWHM_IMAGE is the measured full width at half-maximum. We also manually mask four bright stars not detected by SEXTRACTOR (see Fig. 1). The resulting background-subtracted and masked image is shown in Fig. 1.

3.2 *HST* imaging

We use deep *HST* data of B1608+656 observed with the ACS/WFC camera in the *F606W* and *F814W* filters in 2004 August (Program ID 10158; PI: C. D. Fassnacht). The data are described in more detail

in Suyu et al. (2009), with the summary of the exposures given in their table 2.

We remove the effect of charge transfer efficiency introduced during the readout following Massey (2010), Massey et al. (2014), and Anderson & Bedin (2010), before calibrating each individual exposure using the publicly available CALACS package. We then combine them using the ASTRODRIZZLE package with the standard square kernel (Koekemoer et al. 2003; Ubeda et al. 2012).

The final drizzled images have a pixel scale of 0.03 arcsec and a pixfrac of 0.8, considered as the optimal values for accurate weak lensing measurements (Rhodes et al. 2007). We also produce distortion-free maps of each individual exposure in order to carry out measurements of the point spread function (PSF). As our mass-mapping algorithms require squared images, we make $3.21 \text{ arcmin} \times 3.21 \text{ arcmin}$ cutouts with B1608+656 located about 15 arcsec away from the centre as shown in Fig. 1.

⁵<http://www.astromatic.net/software/sextractor>

4 SELECTION OF THE SOURCE GALAXIES

To measure a weak lensing convergence κ_{wl} close to the external convergence κ_{ext} at the position of the lensed quasar, we would ideally need a screen of source galaxies at the redshift of the quasar, i.e. $z_q = 1.394$, to measure the shear on. Then all intervening matter would have exactly the same lensing efficiency for both κ_{ext} and κ_{wl} . In practice, however, selecting only galaxies with the same redshift as the quasar drastically reduces the surface number density of useful sources in terms of ellipticity measurements. We thus instead select a redshift range for which the cumulative lensing efficiency kernel (see fig. 2 of Tihhonova et al. 2018) is as close as possible to the ‘ideal’ one where all source galaxies would be at $z_s = z_q$ while leaving enough galaxies for the weak lensing analysis. The mismatch between the ‘ideal’ lensing efficiency kernel and the actual one will be accounted for when estimating $P(\kappa_{\text{ext}}|\kappa_{\text{wl}})$ using ray tracing through the MS, as described in Section 6.

As explained in Tihhonova et al. (2018), the lensing efficiency kernel for any source with redshift z_s and lens (deflector) at redshift z_d is given by

$$g(z_d, z_s) = \frac{4\pi G}{c^2} \frac{D_{\text{od}} D_{\text{ds}}}{D_{\text{os}}} H(z_d - z_s) = \frac{H(z_d - z_s)}{\Sigma_{\text{crit}}}, \quad (6)$$

where $H(z - z_s)$ is the Heaviside step function. The cumulative lensing efficiency kernel is defined as follows:

$$\mathcal{G}(z_d) = \frac{\sum_i g(z_d, z_s^i) n(z_s^i)}{\sum_i n(z_s^i)}, \quad (7)$$

where $n(z_s^i)$ is the number of source galaxies per redshift bin i , and z_s^i is the redshift at the centre of the bin and where the summation is over all redshift bins of the source galaxies. The lower panel of Fig. 2 illustrates and compares the ‘ideal’ kernel, i.e. as if all sources were at the redshift of the quasar, with kernels where the redshift distribution of sources is different.

4.1 The Subaru data

For the ground-based Subaru data we perform PSF measurement, source detection, galaxy–star classification, and photometric redshift estimation using the technique described in Rusu et al. (2017). In order to calibrate the photometric redshifts, we use a spectroscopic catalogue composed of 134 objects within a radius of $\theta \lesssim 4$ arcmin around the lens, of which we use only the 113 galaxies with the most reliable spectroscopic redshifts. The spectroscopic redshifts were obtained with the Magellan 6.5 m telescope (Momcheva et al. 2006, 2015), and the Keck 10 m Telescope (PI: Fassnacht). We discard all the galaxies with photometric redshift uncertainties larger than $\sigma_z = 0.3 \times (1 + z)$, where σ_z corresponds to the 68 per cent level error.

We adopt a redshift range of $0.5 < z_s < 4.0$, which gives as a result a total of 12 219 source galaxies, i.e. a surface number density of 14 gals arcmin⁻². The corresponding cumulative lensing efficiency kernel is shown in Fig. 2. This kernel is optimal in the sense that it allows to keep a high number density of source galaxies and it is close to the ‘ideal’ kernel shown in Fig. 2.

4.2 The HST data

With two HST filters, F606W and F814W, we cannot infer photometric redshifts for the source galaxies. Though several of the HST galaxies are identified in the Subaru field and thus have the

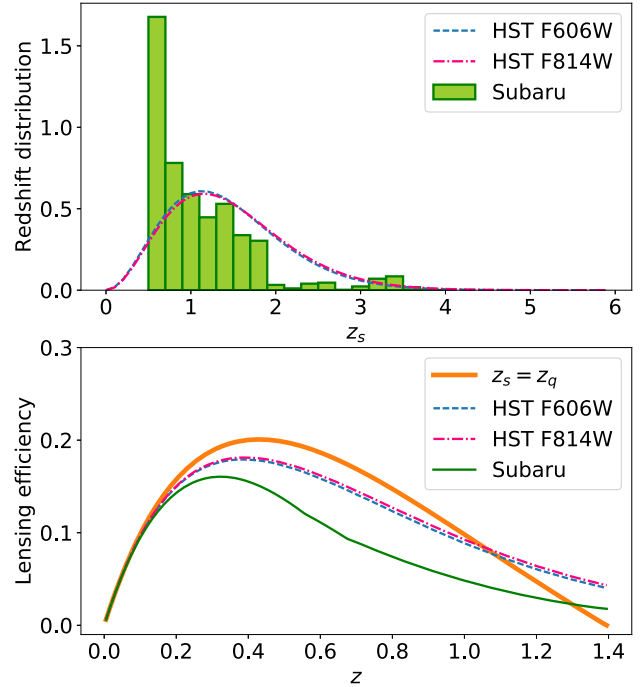


Figure 2. The upper panel shows the final redshift distributions of the selected source galaxies. The green histogram represents the Subaru r -band data, while the blue dashed and pink dash–dotted lines show the parametrized distributions for the HST F606W and the HST F814W filters, respectively. The lower panel depicts the cumulative lensing efficiency kernels for these galaxies, as compared to the ‘ideal’ kernel for the galaxies as if they are all at the redshift of the quasar (thick orange line).

photometric redshift information, they represent only $\approx 1/3$ of the population, and their redshift distribution is not representative, as the Subaru data are shallower than that of the HST. We therefore adopt the empirical parametrization of redshift as a function of apparent magnitude m by Baugh & Efstathiou (1993):

$$\begin{cases} \frac{dN(z,m)}{dz} \propto n_0(m) \frac{z^2}{z_c^2} \exp\left[-\left(\frac{z}{z_c(m)}\right)^{3/2}\right] \\ z_c(m) = z_m/1.412, \end{cases} \quad (8)$$

where n_0 is the galaxy density and z_m is the median redshift as a function of magnitude. Note that we randomly sample redshifts from the distribution in the lensing simulations, hence taking the sampling variance into account by construction. To derive $z_m(m)$ we use the GOODS-South field (GOODS-S; Giavalisco et al. 2004), which has a very similar depth in the F606W and F814W filters compared to our observations (Grogin et al. 2011; Koekemoer et al. 2011). The photometric redshifts in GOODS-S are estimated by Skelton et al. (2014) using 26 broad-bands and 14 medium bands with the EAZY code (Brammer, van Dokkum & Coppi 2008).

We split our data in magnitude bins of $\Delta m = 0.25$ and estimate z_m for both F606W and F814W. We find perfect agreement with Leauthaud et al. (2007), who carried out the same analysis in the COSMOS HST ACS field for the F814W filter (Koekemoer et al. 2007; Scoville et al. 2007).

For the same magnitude bins, we estimate n_0 using the data for B1608+656. We then calculate the redshift distribution following equation (8) for each magnitude bin, and sum them to get the final distribution, presented on the upper panel of Fig. 2. We then apply magnitude cuts of $24 < m < 29$ for both the F606W and F814W

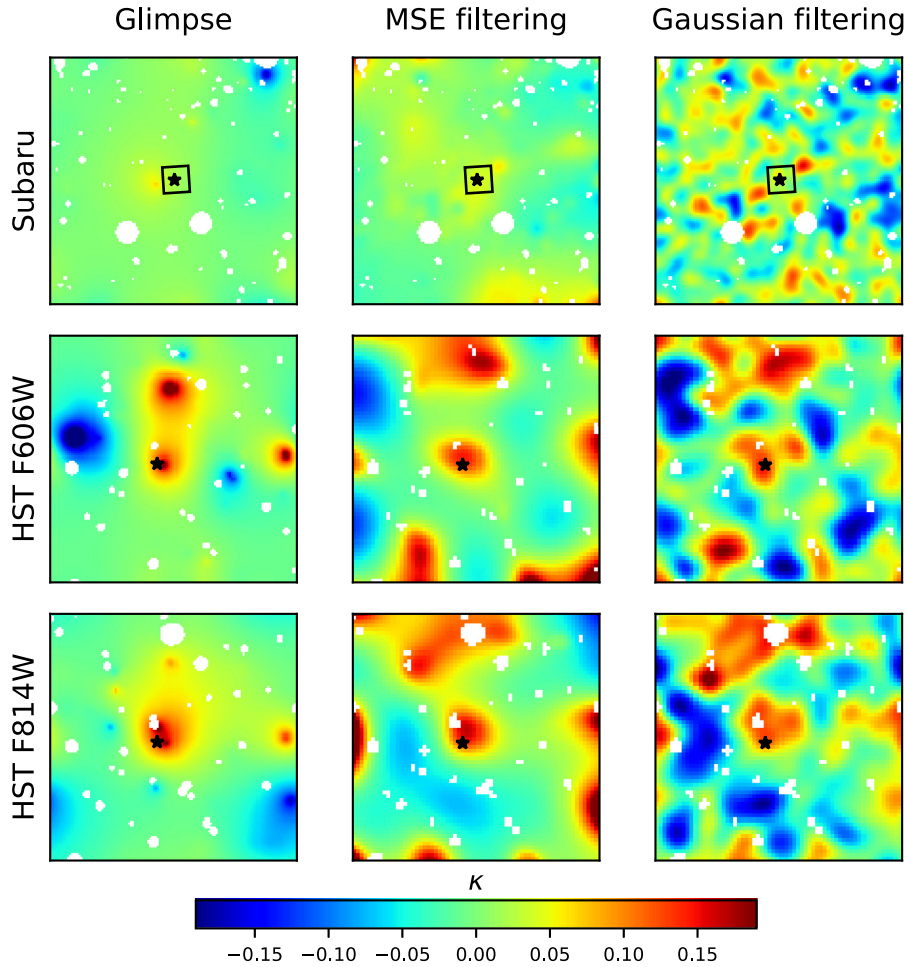


Figure 3. Weak lensing convergence maps for the B1608+656 field, with the lensed system indicated by a star. The upper row shows the convergence from the Subaru r -band data with $0.5^\circ \times 0.5^\circ$ field of view, the middle and the bottom rows show the convergence from the *HST* F606W and the *HST* F814W filter data, respectively. The spatial extent of the *HST* field is $3.21 \text{ arcmin} \times 3.21 \text{ arcmin}$, and is shown by a black square inside the Subaru field. The left column corresponds to the GLIMPSE reconstruction, the middle column to the MSE filtering. The right column shows the Gaussian filtering with $\theta_G = 0.75 \text{ arcmin}$ and $\theta_G = 0.15 \text{ arcmin}$ for the Subaru and *HST* data, respectively. The white regions correspond to masked stars and bright foreground objects. The colour scale represents the values of the weak lensing convergence κ_{wl} .

filters. This leaves 2734 galaxies or $223 \text{ gals arcmin}^{-2}$, and 2694 galaxies or $220 \text{ gals arcmin}^{-2}$ for the F606W and F814W filters, respectively. The resulting kernels are shown on the lower panel of Fig. 2. We also check the colour–magnitude diagram to make sure we do not include any members of the group where the lens galaxies reside.

5 RECONSTRUCTION OF THE WEAK LENSING CONVERGENCE FIELD

For the Subaru data, we use the *KSB+* software (Heymans et al. 2006) to measure the shapes of the selected source galaxies and obtain the shear estimator γ . For the *HST* images, we use an adapted version of RRG (Rhodes, Refregier & Groth 2000), where we first measure the quadrupole and the fourth-order moments of the stars and compare them to TINYTIM PSF models (Krist, Hook & Stoehr 2011) to obtain a PSF estimate on the individual exposures. We then rotate these to a common frame and combine them to derive the final PSF. This method naturally accounts for rotations, chip boundaries, and for the varying effective exposure time across the image (Harvey et al. 2015).

We adopt two different methods to reconstruct the convergence map from the shear field: the *KS* inversion, applied to the inpainted shear field implemented in FASTLENs and MRLENs, and the sparsity-based reconstruction with GLIMPSE. While GLIMPSE already incorporates noise filtering, we adopt a Gaussian and wavelet filtering for the *KS* reconstruction.

We spatially bin the original data in different ways, so that the final spaxel scales in the convergence fields are 14 arcsec on-a-side for the Subaru data. The *HST* data processed with MRLENs have a spaxel size of 3 arcsec and of 1.5 arcsec for the GLIMPSE processing. The spaxel scales are chosen to obtain the finest resolution possible without being entirely dominated by the shot noise. Both mass-reconstruction approaches are iterative, with the number of iterations fixed to 300. MRLENs and GLIMPSE use a wavelet decomposition, and the original images are decomposed into 5 and 4 wavelet scales for the Subaru and the *HST* data, respectively.

To filter the noise in MRLENs, we choose a Gaussian kernels with angular sizes of $\theta_G = 0.75 \text{ arcmin}$ and $\theta_G = 0.15 \text{ arcmin}$ for the Subaru and the *HST* data, respectively. As shown in van Waerbeke (2000), mass maps reconstruction follow a Gaussian statistics. As a consequence, the signal to noise goes roughly as $\sqrt{(N)}$, where N is

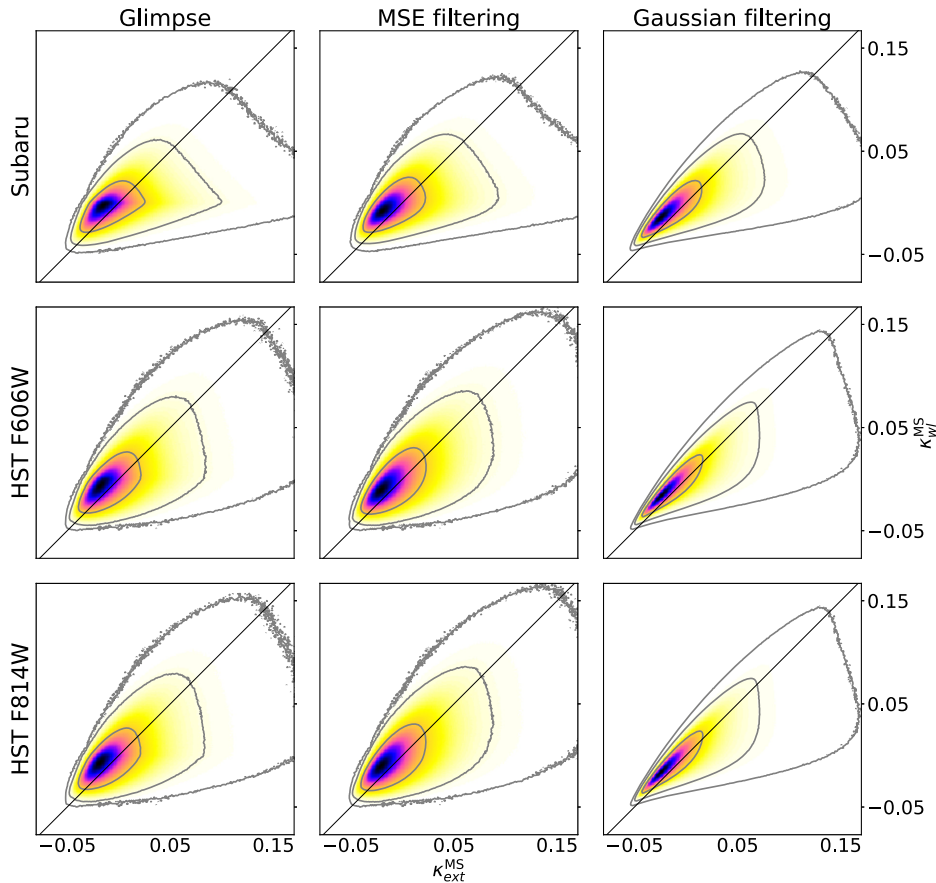


Figure 4. The joint distribution of the external convergence κ_{ext} and the weak lensing convergence κ_{wl} , as estimated from the MS. Darker colours correspond to higher joint probability density $P(\kappa_{\text{ext}}, \kappa_{\text{wl}})$. The grey contours enclose the 1σ , 2σ , and 3σ regions. The black diagonal line indicates perfect correlation. The rows from top to bottom depict the Subaru r -band, the *HST* F606W, and the *HST* F814W data. The columns show the reconstructions using the GLIMPSE, the MSE, and the Gaussian algorithms. The Gaussian kernel sizes are $\theta_G = 0.75$ arcmin and $\theta_G = 0.15$ arcmin for the Subaru and the *HST* data, respectively.

the number of galaxies encompassed by the Kernel. For the Subaru data, the kernel encompasses on average 25 galaxies, and for the *HST* data the (smaller) kernel encompasses 15 galaxies, corresponding to a signal to noise per spatial resolution element of respectively $\text{SNR}(\text{Subaru}) \sim 5$ and $\text{SNR}(\text{HST}) \sim 4$. For wavelet filtering in MRLens we fix $\alpha = 0.01$, i.e. a false detection rate of 1 per cent, as in Tihhonova et al. (2018)

For GLIMPSE, we choose $\lambda = 4$ (see Section 2.2). There is no direct theoretical relation between this Lagrange parameter and the signal to noise of the detections in the GLIMPSE weak lensing map. However, it has been shown empirically on real data that $\lambda = 3$ corresponds roughly to a signal to noise of 3 and that $\lambda = 4$ ensures that all noise peaks are removed while not washing out any real signal. Previous applications exploring this include the GLIMPSE mass map of the lensing cluster Abell 520 (Peel et al. 2017) and the wide-field mass reconstruction of the Dark Energy Survey Science Verification data (Jeffrey et al. 2018).

In order to assess the statistical errors empirically both for the MRLens and GLIMPSE methods, we use the Jackknife approach. In doing so, we divide the field of view into n_{JK} equal regions using the *kmeans* clustering package,⁶ where we adopt $n_{\text{JK}} = 300$ for the Subaru data and $n_{\text{JK}} = 250$ for the *HST* data. The final convergence

maps for the Subaru data, the *HST* F606W and F814W data with the Gaussian filtering, the wavelet filtering, and the GLIMPSE reconstructions are shown in Fig. 3. All maps are visually consistent, with a clear indication of an overdensity at the position of B1608+656. The Subaru data show less small-scale structures than the *HST* data due to the lower spatial resolution and the larger scale smoothing.

6 ESTIMATING THE JOINT CONVERGENCE DISTRIBUTION

The convergence κ_{wl} obtained from the weak lensing reconstruction and the external convergence κ_{ext} the quasar light experiences due to LoS structures differ both statistically and systematically due to several reasons. The source galaxies selected for the weak lensing reconstruction span a redshift distribution, resulting in a lensing efficiency kernel that is different from the ideal one at the redshift of the quasar, as shown in Fig. 2. Furthermore, the convergence from the reconstruction is smoothed on scales larger than the extent of the strong lens image system, which is the relevant spatial scale for κ_{ext} . Moreover, the convergence from the reconstruction is subject to noise due to the redshift uncertainties and the intrinsic ellipticities of the source galaxies.

For these reasons, the weak lensing convergence κ_{wl} cannot be used directly as an estimate of the external convergence κ_{ext} . How-

⁶https://github.com/esheldon/kmeans_radec

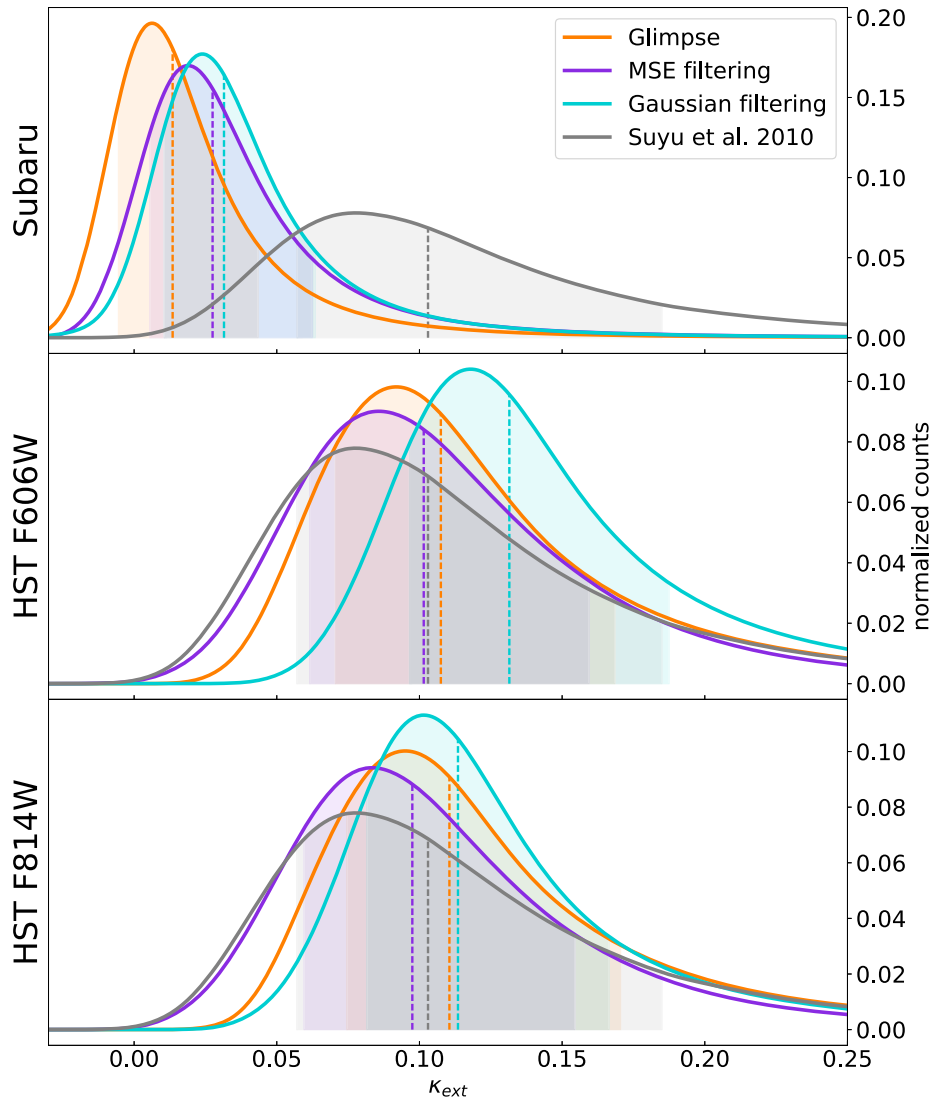


Figure 5. The PDFs of the external convergence at the position of B1608+656 inferred from the data from Subaru r -band, and the *HST* filters *F606W* and *F814W*. The orange distribution corresponds to the GLIMPSE reconstruction and filtering of the data, the purple to the MSE filtering, and the blue to the Gaussian filtering with $\theta_G = 0.75$ arcmin and $\theta_G = 0.15$ arcmin for the Subaru and *HST* data, respectively. The grey distribution shows the result from Suyu et al. (2010) from the number counts technique. Dashed lines show the values at the 50 per cent percentile. Shaded regions indicate the 16th and 84th percentile.

ever, since they share most of the LoS structures as a common cause, they are correlated. Measuring the weak lensing convergence thus still provides very valuable information on the external convergence. The appropriate way to express this information in the framework of Bayesian model parameter estimation employed in HOLICOW is via $P(\kappa_{\text{ext}}|\kappa_{\text{wl}})$, i.e. the posterior probability distribution of κ_{ext} given a measurement of κ_{wl} .

The conditional probability distribution $P(\kappa_{\text{ext}}|\kappa_{\text{wl}})$ can be directly computed from the joint distribution $P(\kappa_{\text{ext}}, \kappa_{\text{wl}})$. Following the approach in Tihhonova et al. (2018), we use ray tracing through the MS (Springel et al. 2005) populated with galaxies by De Lucia & Blaizot (2007) to estimate the joint probability distribution $P(\kappa_{\text{ext}}, \kappa_{\text{wl}})$. Employing multiple-lens-plane ray tracing (Hilbert et al. 2008, 2009), we create 1024 simulated fields of shear and convergence as function of angular position and redshift sampled on grids of 1024^2 LoS. To reach good sampling of the joint distribution, we do not

restrict the analysis to the centre of the simulated fields, but instead consider all LoS sufficiently far from the field boundary, such that the weak lensing reconstruction is not affected by boundary effects. For each such LoS, we then record (i) the convergence κ_{ext} to the quasar redshift, and (ii) the convergence κ_{wl} obtained from a weak lensing reconstruction performed on the imaging data.

The external convergence κ_{ext} is directly taken from the convergence to the quasar redshift output by the lensing simulation. The simulation has a spatial resolution of ~ 10 kpc comoving, which corresponds to an angular resolution of a few arcsec for the convergence. This resolution is sufficient to capture the angular scales on which LoS structures can act as a mass sheet for the strong lens system. Variations of the convergence on smaller scales not captured because of the limited resolution of the simulation do not act as a mass sheet but instead induce image distortions and require explicit modelling as matter structures.

Table 2. Estimates of κ_{ext} at the position of B1608+656 using data from the Subaru *r*-band, and the *HST* filters *F606W* and *F814W*. We apply different mass reconstruction and noise filtering methods: GLIMPSE, MSE filtering, Gaussian filtering with $\theta_G = 0.75$ arcmin and $\theta_G = 0.15$ arcmin for the Subaru and *HST* data, respectively. The values are given at the position of the quasar. For comparison, we also give the values from Suyu et al. (2010). κ_{ext} shows the median value, σ_{κ}^- and σ_{κ}^+ correspond to the deviation from the 16th and the 84th quantiles, respectively. For each method we indicate the Bayes factor calculated with respect to the result from Suyu et al. (2010).

Data	Method	κ_{ext}	σ_{κ}^-	σ_{κ}^+	<i>F</i>
Subaru	GLIMPSE	0.01	0.02	0.03	2.9
	MSE	0.03	0.02	0.04	4.6
	G0.75 arcmin	0.03	0.02	0.03	5.1
<i>F606W</i>	GLIMPSE	0.11	0.04	0.06	8.7
	MSE	0.10	0.04	0.06	8.6
	G0.15 arcmin	0.13	0.03	0.06	7.3
<i>F814W</i>	GLIMPSE	0.11	0.04	0.06	8.6
	MSE	0.10	0.04	0.06	8.8
	G0.15 arcmin	0.11	0.03	0.05	8.6
Suyu et al. 2010		0.10	0.05	0.08	–

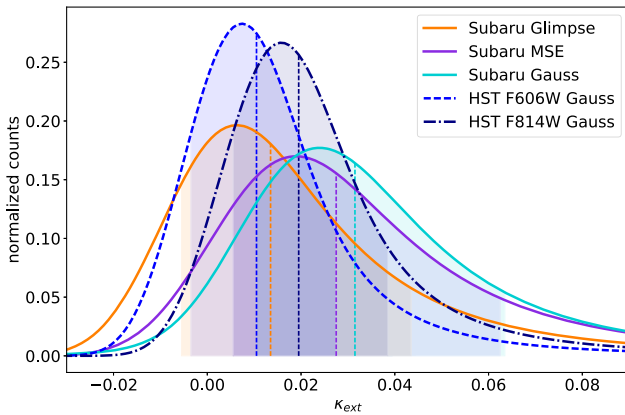


Figure 6. Illustration of the effect of spatial resolution of the weak lensing convergence κ_{wl} on the PDF for the external convergence κ_{ext} at the position of B1608+656. The PDFs are shown with the smoothing matching that of the Subaru data. The dashed blue, the dash-dotted black, and the solid cyan lines show the Gaussian filtering with $\theta_G = 0.75$ arcmin of the *HST F606W*, the *HST F814W*, and the Subaru data, respectively. The orange and the purple lines show the GLIMPSE and the MSE filtering, respectively, of the Subaru data. The increased Gaussian smoothing kernel applied to the *HST* data ensures that the Subaru and *HST* mass maps have the same spatial resolution (see text).

The weak lensing convergence κ_{wl} is computed in the following way. We place source galaxies in the simulated fields at the same angular positions as the galaxies in the real Subaru and *HST* catalogues. For the simulated Subaru catalogues, we set the source galaxy redshifts $z = z_{\text{phot}}$, as we have the photometric redshifts z_{phot} for all the galaxies in the field. In the *HST* catalogues, however, only $\approx 1/3$ of the galaxies have z_{phot} . For the simulated *HST* data, we therefore divide the rest of the population in magnitude bins of $\Delta m = 0.25$ and randomly assign the redshifts z_{distr} from the distribution in equation (8) per magnitude bin. For statistical purposes, we create 250 different redshift realizations. Thus, depending on the galaxy, we set either $z = z_{\text{phot}}$ or $z = z_{\text{distr}}^i$, where $i = 1, \dots, 250$.

For each of the 1024 MS fields we generate 100 noisy realizations of the source galaxy shear catalogue by adding shape noise to the shear obtained from the simulation at the angular positions and redshifts of the simulated source galaxies. The shape noise is drawn from a normal distribution with $\sigma_{\gamma} = 0.28$ and $\sigma_{\gamma} = 0.25$ for the Subaru and the *HST*, respectively, as estimated from the data. We then apply our mass reconstruction and filtering algorithms to obtain simulated weak lensing convergence maps κ_{wl} .

The joint analysis of the simulated convergence maps for κ_{ext} and κ_{wl} yields $P(\kappa_{\text{ext}}, \kappa_{\text{wl}})$ for all filtering techniques, as shown in Fig. 4. After computing $P(\kappa_{\text{ext}}|\kappa_{\text{wl}})$ from that, we infer the posterior probability distribution of the convergence $P(\kappa_{\text{ext}}|\mathbf{d})$ along the LoS to B1608+656 given the actual shear data \mathbf{d} :

$$P(\kappa_{\text{ext}}|\mathbf{d}) = \int d\kappa_{\text{wl}} P(\kappa_{\text{ext}}|\kappa_{\text{wl}}) \times P(\kappa_{\text{wl}}|\mathbf{d}). \quad (9)$$

As previously discussed, statistical sources of noise, such as shape noise, the redshift uncertainty, or the random source galaxy positions are fully accounted for by construction of the method, i.e. by comparing real observations to simulations.

7 THE LINE-OF-SIGHT CONVERGENCE

In order to obtain the LoS convergence in the field of B1608+656, we combine the results from Sections 5 and 6. We construct $P(\kappa_{\text{wl}}|\mathbf{d})$ by measuring κ_{wl} at the position of B1608+656 in 300 and 250 Jackknife realizations of the convergence maps for the Subaru and the *HST* data, respectively, for all noise filtering techniques.

We use the joint distributions $P(\kappa_{\text{ext}}|\kappa_{\text{wl}})$ from the MS to translate $P(\kappa_{\text{wl}}|\mathbf{d})$ to $P(\kappa_{\text{ext}}|\mathbf{d})$, thereby accounting for shape noise, source redshift mismatch, and for the smaller scales possibly washed out during the spatial filtering of the weak lensing maps.

The final $P(\kappa_{\text{ext}}|\mathbf{d})$ distributions are displayed in Fig. 5, together with the results from Suyu et al. (2010) based on the weighted galaxy number counts. The values of κ_{ext} at the position of B1608+656 and the associated error bars are given in Table 2.

The Subaru data indicate lower convergence at the position of B1608+656 than the *HST* data. This is due to a lower resolution and sensitivity of the ground-based data owing to the smaller galaxy density and the larger smoothing necessary to filter the noise. The large convergence comes from a localized area around the projected position of the quasar (see the middle and bottom panels in Fig. 3), and is quickly decreasing with angular distance to it. Smoothing with a large kernel will thus result in a decrease of the signal.

To illustrate this, we apply filtering with a Gaussian kernel with $\theta_G = 0.75$ arcmin to the *HST* data, i.e. the same Gaussian filtering that we use for the ground Subaru data, and carry out the Jackknife procedure. We then infer the $P(\kappa_{\text{ext}}|\mathbf{d})$ distributions at the position of the quasar. Fig. 6 shows the ensuing *HST F606W* and *F814W* distributions alongside the original Subaru ones. All the distributions are compatible with each other. Moreover, all reconstruction techniques produce compatible results, as discussed in Section 8. This also clearly illustrates that the ground-based data simply lack the spatial resolution necessary to see the convergence peak, i.e. κ_{wl} , near the location of the quasar.

Note that the quantity relevant for cosmography and H_0 inference is the value of κ_{ext} on scales comparable to the angular size of the whole B1608+656 system, i.e. about 5 arcsec. This happens to match the spaxel size used for the *HST* data and shows that deep *HST* data are really needed for this work. The spaxel size used for the Subaru data, imposed to us by the limited number density of background

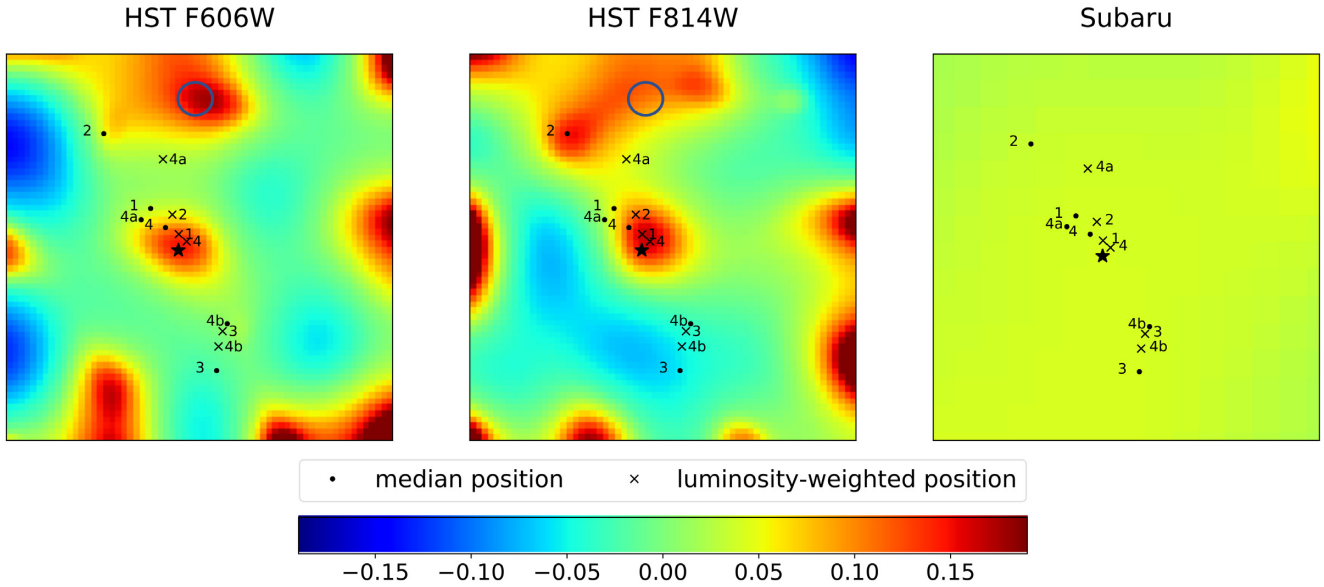


Figure 7. The galaxy groups identified in Fassnacht et al. (2006) are shown in overlay of the MSE filtering mass maps for the *HST* and Subaru data. The field of view is the same for the 3 data sets, i.e. $3.21 \text{ arcmin} \times 3.21 \text{ arcmin}$. B1608+656 is indicated with a star symbol. The crosses and circles show the median and luminosity-weighted centroids of the groups shown in table 1 of Fassnacht et al. (2006). The blue circle indicates a compact group seen in Fig. 1, but not reported in Fassnacht et al. (2006) (see text).

galaxies, is much larger (14 arcsec) and results in a bias in the κ_{ext} values, as is illustrated in Fig. 5.

Further structures, smaller than 3–5 arcsec may be revealed by using higher resolution and deeper data than *HST* in combination with cosmological simulations also of higher spatial resolution. However, such variations, like mass gradients across the quasar images are already included explicitly in the lens model. In the event they are not, these variations would result in a broadening of our κ_{ext} distributions rather than a systematic shift, because any small-scale and unknown κ_{ext} contribution due to LoS can either be positive or negative, simply following cosmic variance.

Since the spatial resolution of the mass maps obtained with the *HST* data greatly surpasses that of the Subaru data, we consider only the *HST* data for our final analysis. We marginalize over 6 κ_{ext} distributions (not maps) since there is no reason to trust one filter more than the other and since we use three different methods for each filter. Our final value for κ_{ext} evaluated in this way is $\kappa = 0.11_{-0.04}^{+0.06}$, where the lower bound corresponds to the 16th percentile and the upper bound to the 84th percentile.

8 COMPARISON WITH PREVIOUS WORK

The environment of B1608+656 was previously studied with different methods that we compare with our results. Using the number counts technique, Fassnacht et al. (2011) found that B1608+656 resides in an overdense environment, being roughly twice as dense as control fields. Suyu et al. (2010) used the result of Fassnacht et al. (2011) to select LoS in the MS containing the same relative overdensity, and extract the distribution of κ_{ext} . The resulting distribution is shown in Fig. 5 and compared with our new weak lensing distributions. Although all distributions look well compatible, we use the Bayesian formalism proposed in Marshall, Rajguru & Slosar (2006) to quantify this and test two hypotheses, H_1 and H_2 :

(i) H_1 : the two distributions for κ_{ext} , from weak lensing and from number counts, can be consistently explained within one

single underlying cosmology under the assumption that no unknown systematic bias affects one or the other κ_{ext} measurement.

(ii) H_2 : the two distributions or one of them suffer from its/their own systematic error or are not drawn from the same cosmology or underlying physical model.

The question is then to know whether the data favour the H_1 or the H_2 hypothesis, i.e. whether the data point towards the presence of unknown systematics that need to be explicitly accounted for, or not. For this purpose, we calculate the Bayes factor F , given by

$$F = \frac{P(\kappa_{\text{ext} \leftarrow \text{wl}}, \kappa_{\text{ext} \leftarrow \text{nc}} | H_1)}{P(\kappa_{\text{ext} \leftarrow \text{wl}}, \kappa_{\text{ext} \leftarrow \text{nc}} | H_2)}, \quad (10)$$

where $\kappa_{\text{ext} \leftarrow \text{wl}}$ is the external convergence inferred from weak lensing and $\kappa_{\text{ext} \leftarrow \text{nc}}$ is the external convergence inferred from the number count technique. Following the appendix of Suyu et al. (2013), this boils down to

$$F = \frac{\langle L_{\text{ext} \leftarrow \text{wl}} L_{\text{ext} \leftarrow \text{nc}} \rangle}{\langle L_{\text{ext} \leftarrow \text{wl}} \rangle \langle L_{\text{ext} \leftarrow \text{nc}} \rangle}, \quad (11)$$

where $L_{\text{ext} \leftarrow \text{wl}}$ and $L_{\text{ext} \leftarrow \text{nc}}$ are the likelihoods of, respectively, $\kappa_{\text{ext} \leftarrow \text{wl}}$ and $\kappa_{\text{ext} \leftarrow \text{nc}}$. If $F > 1$, the data are in favour of H_1 hypothesis. For reference, two one-dimensional Gaussian likelihoods have a Bayes factor of $F = 1$ if they overlap within 2σ , and $F \approx 3.6$ if the two distributions overlap within 1σ .

The computed Bayes factors with respect to the result from Suyu et al. (2010) for all convergence reconstruction techniques for both ground-based and space-based data are shown in Table 2. The *HST* data yield very good agreement with the number counts technique, while the Subaru data are slightly discrepant. This results from the fact that the ground-based data cannot probe spatial scales as small as space-based data. All three reconstruction and filtering techniques are inter-compatible, with comparable errors and corresponding Bayes factors being $F > 10$. We therefore conclude that there is no hidden systematic that makes any pair of data set incompatible with each other.

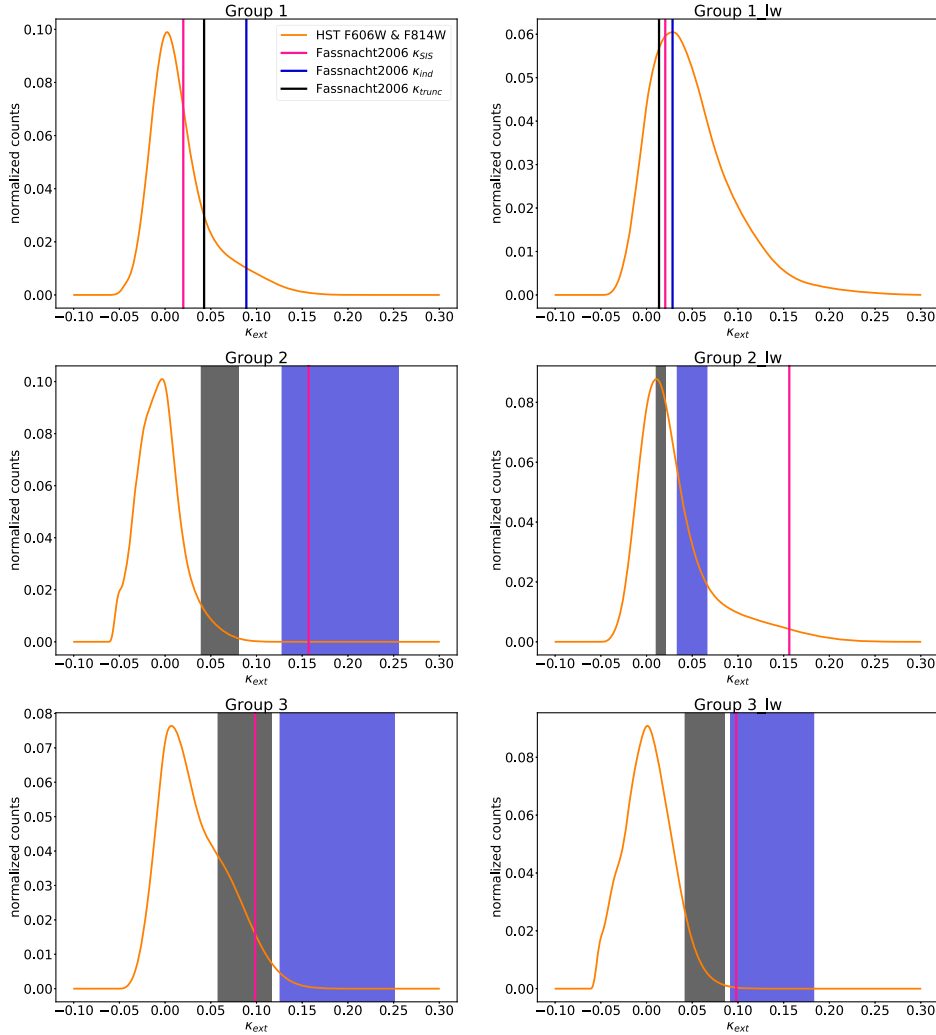


Figure 8. The PDF's for the convergence at the position of the groups found in Fasnacht et al. (2006). The orange distributions show the weak lensing results, considering only the *HST* data (see end of Section 7). The vertical lines and the shaded regions depict the convergence values from Fasnacht et al. (2006), according to their table 2. The pink line corresponds to their estimates of the convergence when modelling their group with a single SIS halo. The black and blue lines give the result when modelling the groups as a collection of haloes with and without a truncation radius, respectively. The shaded regions indicate the uncertainty from the estimates of the velocity dispersion for the individual galaxies, while the vertical lines denote the estimates without the quoted uncertainty. The left column corresponds to the group centroids determined as the median of the member positions, while the right column shows the estimate as the luminosity-weighted mean.

9 CONVERGENCE OF GROUPS IN THE VICINITY OF B1608+656

Fasnacht et al. (2006) examine the neighbourhood of B1608+656. They find four groups of galaxies within a projected radius of 1 arcmin from the lensed system. The fourth of these groups may be a merger event or a filamentary structure, so that the authors divide it into two subgroups, based on the redshifts of the members. For each of these groups and subgroups, Fasnacht et al. (2006) provide a convergence value based on analytical modelling or their halo, which we compare here to our non-parametric reconstructions.

In Fasnacht et al. (2006), the centroids of the groups are estimated in two ways. First using the median of the member positions and, second, by using their luminosity-weighted mean. The locations of the groups from the two methods are shown in Fig. 7 in overlay of our *HST* weak lensing maps and show a clear correlation between the higher convergence and the presence of the groups.

Fasnacht et al. (2006) determine the convergence of the groups with two different approaches. The first assumes that all members of a given group share the same halo, modelled as a singular isothermal sphere (SIS) located at the mean position of the group or at the luminosity-weighted position. The second approach considers each group as a collection of individual haloes, with the final convergence being the sum of contributions from all members. Each separate halo is modelled as an SIS, with or without truncation radius (see table 2 of Fasnacht et al. 2006). These are compared to our *HST* weak lensing convergence values in Fig. 8. In all cases, the halo with a truncation radius are preferred by the weak lensing data, especially in dense environments (e.g. Limousin et al. 2007; Eichner et al. 2013).

Fasnacht et al. (2006) discuss the presence of a potential cluster at redshift $z = 0.52$, labelled here as Group 4. In order to test the hypothesis of a merger event rather than a single cluster, they divide it into two subgroups, Group 4a and Group 4b. Our weak lensing results are consistent with zero convergence at the position of these

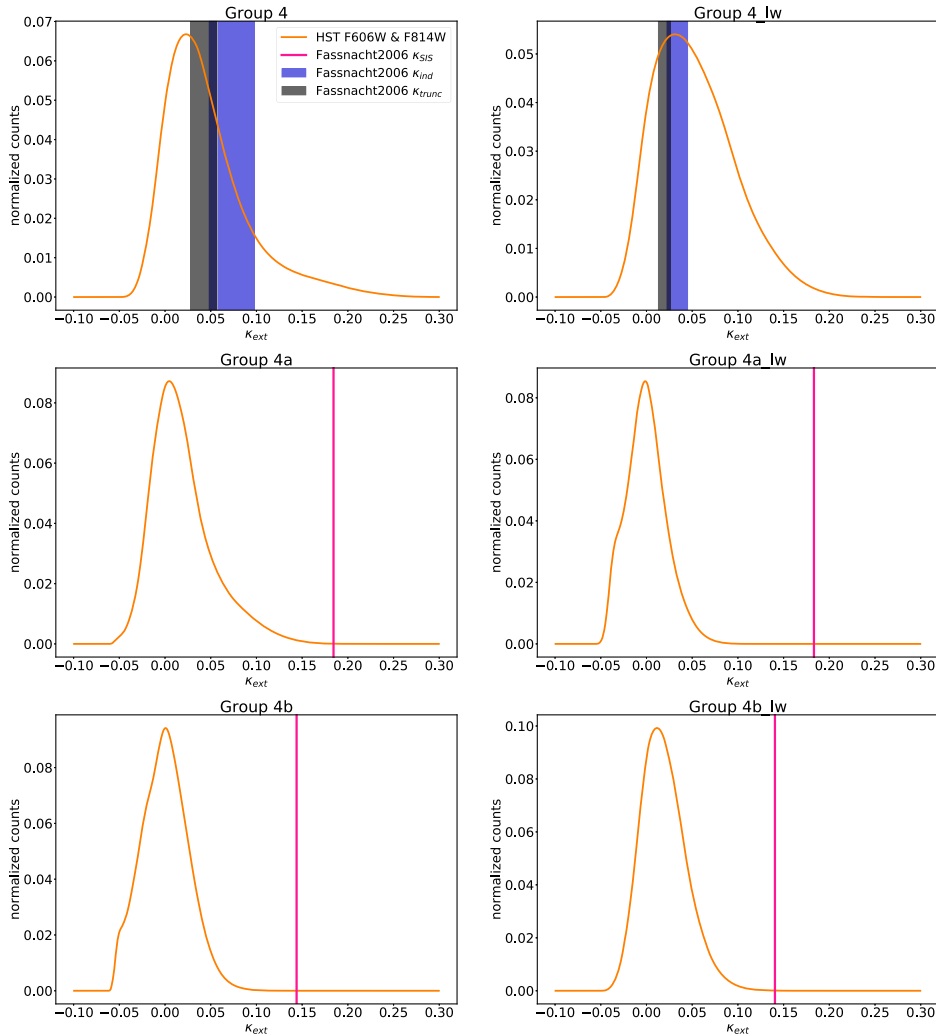


Figure 8 – continued

subgroups, disfavoring the two-group hypothesis. However, our convergence distributions at the position of Group 4 hint towards one single halo and our convergence estimates are consistent with that of Fasnacht et al. (2006) in the single-halo hypothesis.

Finally, we also note a rich and compact group of galaxies at the very top of the *HST* field in Fig. 1, that is well detected in our weak lensing maps but not at all in Fasnacht et al. (2006). This may be due to the compactness of the cluster or group, preventing these authors to place spectroscopic slits in a sufficiently compact configuration to measure redshifts. This compact group is indicated with a blue circle in Fig. 7.

10 SUMMARY

We analysed the environment and the LoS of the quadruply lensed quasar B1608+656, which is one of the lenses in the H0LiCOW sample. From galaxy number counts, B1608+656 is already known to reside in a highly overdense environment, substantially impacting the cosmological analysis from TD cosmography. We provided a complementary and independent measurement of the external convergence at the position of the system using weak gravitational lensing.

For this purpose, we used deep Subaru Suprime-Cam observations and *HST* data in the *F606W* and *F814W* filters. The source galaxy density is 14 and 220 gal arcmin⁻² for the Subaru and *HST* data, respectively. We adopted three different methods to reconstruct the convergence maps: Kaiser–Squires inversion of the inpainted shear field with either Gaussian or multiscale entropy noise filtering, and the sparsity based GLIPMSE technique. The inpainting was used to remove the noise coming from the unevenly sampled shear data and the gaps in the field, propagating to the convergence field. However, the inpainted data themselves were not used in the final analysis. We adopted two different Gaussian smoothings for the Subaru and the *HST*, i.e. $\theta_G = 0.75$ arcmin and $\theta_G = 0.15$ arcmin kernels, respectively.

We find that the mass maps based on Kaiser–Squires inversion and GLIPMSE algorithm are qualitatively very similar. Without surprise, reconstructions with the ground-based data present less small-scale features as with the space-based data. This is due to the need of applying larger smoothing kernels for the ground-based data than for space-based data in order to ensure similar signal to noise for the shears maps.

The convergence obtained from a weak lensing reconstruction is expected to differ from the external convergence due to, e.g. shape noise in the weak lensing shear, different source redshift distributions,

and different spatial smoothing scales. We thus employed lensing simulations based on the MS to estimate the joint distribution of the external convergence and the weak lensing convergence for the different source galaxy catalogues and convergence reconstruction methods. From that we computed the posterior probability distribution of the external convergence given the weak lensing data.

Due to their lower resolution and sensitivity, we do not use the Subaru data for our final results. Based solely on the *HST* data, we find that the environment and the LoS of B1608+656 is effectively overdense. Our measurements are compatible with the previous analysis using number counts technique by Fassnacht et al. (2011) and Suyu et al. (2010). However, our methodology is independent and complementary, as it probes directly the distributions of dark and luminous matter in a non-parametric and is not model dependent. Owing to the agreement between the weak lensing and number counts results by Suyu et al. (2010), there is no need for any additional correction to the κ_{ext} value adopted in previous work based on B1608+656.

Finally, we investigate the presence of groups found in B1608+656 field by Fassnacht et al. (2006). Our *HST* mass maps show correlation between the positions of the groups and the peaks in the convergence map. We also find that the convergence value found from the weak lensing analysis agree better with truncated halo models for the groups than with non-truncated haloes.

ACKNOWLEDGEMENTS

This work is supported by the Swiss National Science Foundation (SNSF). This project has received funding from the European Research Council (ERC) under the European Union's Horizon 2020 research and innovation program (COSMICLENS: grant agreement No 787886). OT acknowledges support from the Swiss Society for Astronomy and Astrophysics (SSAA), and thanks Sandrine Pires and Yves Revaz for fruitful discussions and suggestions. This work was supported by World Premier International Research Center Initiative (WPI Initiative), MEXT, Japan. KCW is supported in part by an EACOA Fellowship awarded by the East Asia Core Observatories Association, which consists of the Academia Sinica Institute of Astronomy and Astrophysics, the National Astronomical Observatory of Japan, the National Astronomical Observatories of the Chinese Academy of Sciences, and the Korea Astronomy and Space Science Institute. SHS thanks the Max Planck Society for support through the Max Planck Research Group. SHS acknowledges support by the DFG cluster of excellence 'Origin and Structure of the Universe' (www.universe-cluster.de). CER and CDF acknowledge support for this work from the National Science Foundation under Grant No. AST-1312329, and CDF further acknowledges support from the NSF under Grant No. AST-1715611.

REFERENCES

- Abbott B. P. et al., 2017, *Nature*, 551, 85
 Abbott T. M. C. et al., 2018, *MNRAS*, 480, 3879
 Alam S. et al., 2017, *MNRAS*, 470, 2617
 Anderson J., Bedin L. R., 2010, *PASP*, 122, 1035
 Bartelmann M., Schneider P., 2001, *Phys. Rep.*, 340, 291
 Baugh C. M., Efstathiou G., 1993, *MNRAS*, 265, 145
 Bertin E., 2006, in Gabriel C., Arviset C., Ponz D., Enrique S., eds, ASP Conf. Ser. Vol. 351, *Astronomical Data Analysis Software and Systems XV*. Astron. Soc. Pac., San Francisco, p. 112
 Bertin E., Arnouts S., 1996, *A&AS*, 117, 393
 Bertin E., Mellier Y., Radovich M., Missonnier G., Didelon P., Morin B., 2002, in Bohlender D. A., Durand D., Handley T. H., eds, ASP Conf. Ser. Vol. 281, *Astronomical Data Analysis Software and Systems XI*. Astron. Soc. Pac., San Francisco, p. 228
 Birrer S. et al., 2019, *MNRAS*, 484, 4726
 Bonvin V. et al., 2017, *MNRAS*, 465, 4914
 Bonvin V. et al., 2018, *A&A*, 616, A183
 Brammer G. B., van Dokkum P. G., Coppi P., 2008, *ApJ*, 686, 1503
 Browne I. W. A. et al., 2003, *MNRAS*, 341, 13
 Buton C. et al., 2013, *A&A*, 549, A8
 Coe D., Moustakas L. A., 2009, *ApJ*, 706, 45
 Collett T. E., Cunnington S. D., 2016, *MNRAS*, 462, 3255
 Courbin F., Eigenbrod A., Vuissoz C., Meylan G., Magain P., 2005, in Mellier Y., Meylan G., eds, Proc. IAU Symp. 225, *Gravitational Lensing Impact on Cosmology*. Kluwer, Dordrecht, p. 297
 Courbin F. et al., 2018, *A&A*, 609, A71
 De Lucia G., Blaizot J., 2007, *MNRAS*, 375, 2
 Ding X. et al., 2017, *MNRAS*, 465, 4634
 Eichner T. et al., 2013, *ApJ*, 774, 124
 Eulaers E. et al., 2013, *A&A*, 553, A121
 Fassnacht C. D., Womble D. S., Neugebauer G., Browne I. W. A., Readhead A. C. S., Matthews K., Pearson T. J., 1996, *ApJ*, 460, L103
 Fassnacht C. D., Gal R. R., Lubin L. M., McKean J. P., Squires G. K., Readhead A. C. S., 2006, *ApJ*, 642, 30
 Fassnacht C. D., Koopmans L. V. E., Wong K. C., 2011, *MNRAS*, 410, 2167
 Fernández Arenas D. et al., 2018, *MNRAS*, 474, 1250
 Freedman W. L., Madore B. F., Scowcroft V., Burns C., Monson A., Persson S. E., Seibert M., Rigby J., 2012, *ApJ*, 758, 24
 Gialalisco M. et al., 2004, *ApJ*, 600, L93
 Grogin N. A. et al., 2011, *ApJS*, 197, 35
 Harvey D., Massey R., Kitching T., Taylor A., Tittley E., 2015, *Science*, 347, 1462
 Heymans C. et al., 2006, *MNRAS*, 368, 1323
 Hilbert S., White S. D. M., Hartlap J., Schneider P., 2008, *MNRAS*, 386, 1845
 Hilbert S., Hartlap J., White S. D. M., Schneider P., 2009, *A&A*, 499, 31
 Jaroszyński M., Skowron J., 2016, *MNRAS*, 462, 1405
 Jeffrey N. et al., 2018, *MNRAS*, 479, 2871
 Kaiser N., Squires G., 1993, *ApJ*, 404, 441 (KS)
 Keeton C. R., Zabludoff A. I., 2004, *ApJ*, 612, 660
 Koekemoer A. M., Fruchter A. S., Hook R. N., Hack W., 2003, in Arribas S., Koekemoer A., Whitmore B., eds, *HST Calibration Workshop : Hubble after the Installation of the ACS and the NICMOS Cooling System*. Space Telescope Science Institute, Baltimore, p. 337
 Koekemoer A. M. et al., 2007, *ApJS*, 172, 196
 Koekemoer A. M. et al., 2011, *ApJS*, 197, 36
 Krist J. E., Hook R. N., Stoehr F., 2011, Proc. SPIE Conf. Ser.
 Lanusse F., Starck J.-L., Leonard A., Pires S., 2016, *A&A*, 591, A2
 Leauthaud A. et al., 2007, *ApJS*, 172, 219
 Limousin M., Kneib J. P., Bardeau S., Natarajan P., Czoske O., Smail I., Ebeling H., Smith G. P., 2007, *A&A*, 461, 881
 Marshall P., Rajguru N., Slosar A., 2006, *Phys. Rev. D*, 73, 067302
 Massey R., 2010, *MNRAS*, 409, L109
 Massey R. et al., 2014, *MNRAS*, 439, 887
 McCully C., Keeton C. R., Wong K. C., Zabludoff A. I., 2017, *ApJ*, 836, 141
 Miller C. J. et al., 2001, *AJ*, 122, 3492
 Momcheva I., Williams K., Keeton C., Zabludoff A., 2006, *ApJ*, 641, 169
 Momcheva I. G., Williams K. A., Cool R. J., Keeton C. R., Zabludoff A. I., 2015, *ApJS*, 219, 29
 Myers S. T. et al., 1995, *ApJ*, 447, L5
 Myers S. T. et al., 2003, *MNRAS*, 341, 1
 Ouchi M. et al., 2004, *ApJ*, 611, 660
 Peel A., Lanusse F., Starck J.-L., 2017, *ApJ*, 847, 23
 Pires S., Starck J.-L., Amara A., Teyssier R., Réfrégier A., Fadili J., 2009, *MNRAS*, 395, 1265
 Planck Collaboration XIII, 2016, *A&A*, 594, A13
 Refsdal S., 1964, *MNRAS*, 128, 307
 Reid M. J., Braatz J. A., Condon J. J., Lo K. Y., Kuo C. Y., Impellizzeri C. M. V., Henkel C., 2013, *ApJ*, 767, 154
 Rhodes J., Refregier A., Groth E. J., 2000, *ApJ*, 536, 79

- Rhodes J. D. et al., 2007, *ApJS*, 172, 203
 Riess A. G. et al., 2016, *ApJ*, 826, 56
 Rusu C. E. et al., 2017, *MNRAS*, 467, 4220
 Schlafly E. F., Finkbeiner D. P., 2011, *ApJ*, 737, 103
 Schneider P., Kochanek C., Wambsgans J., 2006, *Gravitational Lensing: Strong, Weak and Micro*. Springer-Verlag, Berlin
 Scoville N. et al., 2007, *ApJS*, 172, 38
 Skelton R. E. et al., 2014, *ApJS*, 214, 24
 Sluse D. et al., 2017, *MNRAS*, 470, 4838
 Springel V. et al., 2005, *Nature*, 435, 629
 Starck J.-L., Murtagh F., 2006, *Astronomical Image and Data Analysis*. Springer, Heidelberg
 Starck J.-L., Pires S., Réfrégier A., 2006, *A&A*, 451, 1139
 Suyu S. H., Marshall P. J., Blandford R. D., Fassnacht C. D., Koopmans L. V. E., McKean J. P., Treu T., 2009, *ApJ*, 691, 277
 Suyu S. H., Marshall P. J., Auger M. W., Hilbert S., Blandford R. D., Koopmans L. V. E., Fassnacht C. D., Treu T., 2010, *ApJ*, 711, 201
 Suyu S. H. et al., 2013, *ApJ*, 766, 70
 Suyu S. H. et al., 2017, *MNRAS*, 468, 2590
 Tewes M. et al., 2013, *A&A*, 556, A22
 Tihhonova O. et al., 2018, *MNRAS*, 477, 5657
 Ubeda L. et al., 2012, *Advanced Camera for Surveys Instrument Handbook for Cycle 21 v. 12.0*. Space Telescope Science Institute, Baltimore
 van Waerbeke L., 2000, *MNRAS*, 313, 524
 Wong K. C. et al., 2017, *MNRAS*, 465, 4895
 Yagi M., Kashikawa N., Sekiguchi M., Doi M., Yasuda N., Shimasaku K., Okamura S., 2002, *AJ*, 123, 66

This paper has been typeset from a $\text{\TeX}/\text{\LaTeX}$ file prepared by the author.