

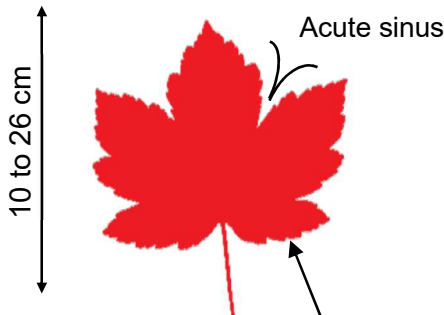
**IDENTIFICATION
OF THE MAPLE TREE
RESPONSIBLE FOR ATYPICAL MYOPATHY**

SYCAMORE MAPLE (*Acer pseudoplatanus*)

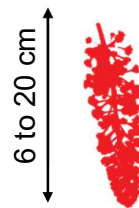
Toxic



- Recognition of the tree by its leaves, flowers and fruits

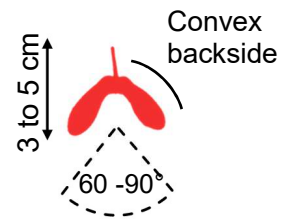


5 lobes with dentate margins



Hanging raceme

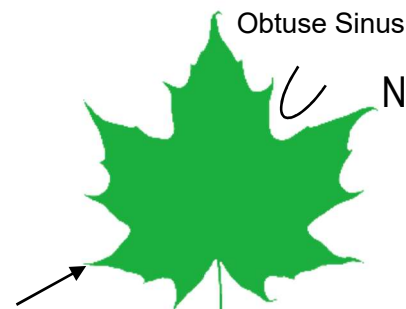
Flowers after the leaves



Samaras forming an acute angle

TWO OTHER COMMON MAPLE TREES

Non toxic



5 acuminate lobes

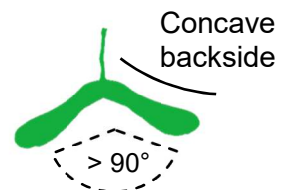
Petiole with white latex

NORWAY MAPLE (*Acer platanoides*)

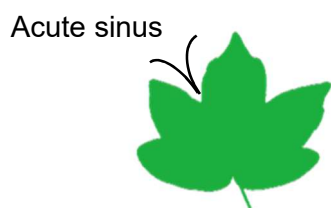


Erect, branched flowers

Flowers appear before the leaves



Samaras forming an obtuse angle



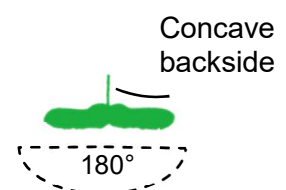
5 lobes with entire margins

FIELD MAPLE (*Acer campestre*)



Erect, branched flowers

Flowers appear simultaneously with the leaves



Disamara forming a straight angle