

Association of Left Ventricular Global Longitudinal Strain With Asymptomatic Severe Aortic Stenosis

Natural Course and Prognostic Value

E. Mara Vollema, MD; Tadafumi Sugimoto, MD; Mylène Shen, MSc; Lionel Tastet, MSc, MS; Arnold C. T. Ng, MD, PhD; Rachid Abou, MD; Nina Ajmone Marsan, MD, PhD; Bart Mertens, PhD; Raluca Dulgheru, MD; Patrizio Lancellotti, MD, PhD; Marie-Annick Clavel, DVM, PhD; Philippe Pibarot, DVM, PhD; Philippe Genereux, MD; Martin B. Leon, MD; Victoria Delgado, MD, PhD; Jeroen J. Bax, MD, PhD

IMPORTANCE The optimal timing to operate in patients with asymptomatic severe aortic stenosis (AS) remains controversial. Left ventricular global longitudinal strain (LV GLS) may help to identify patients who might benefit from undergoing earlier aortic valve replacement.

OBJECTIVE To investigate the prevalence of impaired LV GLS, the natural course of LV GLS, and its prognostic implications in patients with asymptomatic severe AS with preserved left ventricular ejection fraction (LVEF).

DESIGN, SETTING, AND PARTICIPANTS This registry-based study included the institutional registries of 3 large tertiary referral centers and 220 patients with asymptomatic severe AS and preserved LVEF (>50%) who were matched for age and sex with 220 controls without structural heart disease. The echocardiograms of patients and controls were performed between 1998 and 2017.

EXPOSURES Both clinical and echocardiographic data were assessed retrospectively. Severe AS was defined by an indexed aortic valve area less than 0.6 cm²/m². Left ventricular global longitudinal strain was evaluated on transthoracic echocardiography using speckle tracking imaging.

MAIN OUTCOMES AND MEASURES The prevalence of impaired LV GLS, the natural course of LV GLS, and the association of impaired LV GLS with symptom onset and the need for aortic valve intervention.

RESULTS Two hundred twenty patients (mean [SD] age, 68 [13] years; 126 men [57%]) were included. Despite comparable LVEF, LV GLS was significantly impaired in patients with asymptomatic severe AS compared with age- and sex-matched controls without AS (mean [SD] LV GLS, -17.9% [2.5%] vs -19.6% [2.1%]; $P < .001$). After a median follow-up of 12 (interquartile range, 7-23) months, mean (SD) LV GLS significantly deteriorated (-18.0% [2.6%] to -16.3% [2.8%]; $P < .001$) while LVEF remained unchanged. Patients with impaired LV GLS at baseline (>-18.2%) showed a higher risk for developing symptoms ($P = .02$) and needing aortic valve intervention ($P = .03$) at follow-up compared with patients with more preserved LV GLS ($\leq -18.2\%$).

CONCLUSIONS AND RELEVANCE Subclinical myocardial dysfunction that is characterized by impaired LV GLS is often present in patients with asymptomatic severe AS with preserved LVEF. Left ventricular global longitudinal strain further deteriorates over time and impaired LV GLS at baseline is associated with an increased risk for progression to the symptomatic stage and the need for aortic valve intervention.

JAMA Cardiol. doi:10.1001/jamacardio.2018.2288
Published online August 15, 2018.

- [+ Invited Commentary](#)
- [+ Author Audio Interview](#)
- [+ Supplemental content](#)

Author Affiliations: Author affiliations are listed at the end of this article.

Corresponding Author: Jeroen J. Bax, MD, PhD, Department of Cardiology, Leiden University Medical Center, Albinusdreef 2, 2300RC Leiden, the Netherlands (j.j.bax@lumc.nl).

In patients with asymptomatic severe aortic stenosis (AS), the current guidelines recommend a watchful waiting strategy until symptoms or left ventricular (LV) systolic dysfunction (ie, LV ejection fraction [LVEF] < 50%) develop.^{1,2} The optimal timing for intervention in these patients remains controversial.³⁻⁶ To determine whether the patients are truly asymptomatic, exercise testing is an important diagnostic tool.⁷ However, in patients who are unable to perform this test, additional measurements are needed to better define the timing of the intervention. The assessment of LV systolic function by means of global longitudinal strain (GLS) by speckle tracking echocardiography has demonstrated that a significant proportion of patients with severe AS have impaired LV GLS despite having normal LVEF.⁸⁻¹³ Impaired LV GLS has been associated with worse outcomes in patients with symptomatic severe AS.¹⁴ However, to our knowledge, the prevalence of impaired LV GLS among patients with asymptomatic severe AS and normal LVEF and the natural course and prognostic value of LV GLS in this subgroup of patients has not been extensively elucidated. Accordingly, this study aimed to investigate the prevalence of impaired LV GLS, as well as describing the natural course of serial changes in LV GLS and its prognostic implications, in asymptomatic patients with severe AS and preserved LVEF.

Methods

Study Population and Data Collection

From a multicenter international registry of patients with AS (Leiden University Medical Center, Heart Valve Clinic, and Institut Universitaire de Cardiologie et de Pneumologie de Québec), 220 patients with asymptomatic severe AS and preserved LV ejection fraction (LVEF > 50%) were selected and included in this retrospective study. Patients were selected based on available echocardiographic data at baseline (defined as the date of the first diagnosis of severe AS) with a feasible speckle tracking analysis. The definition of severe AS was based on an indexed aortic valve area (AVA) of less than 0.6 cm²/m² and/or a mean aortic valve gradient of 40 mm Hg or more and/or a peak aortic jet velocity of 4 m per second or more.^{2,15,16} When available, the last transthoracic echocardiogram performed at the outpatient clinic or before aortic intervention was analyzed to evaluate the changes in valve hemodynamics, LV structure, and systolic function (including LV GLS). Measurements of the echocardiographic data were performed at each institution by experienced observers. Aortic valve intervention was defined as a surgical or transcatheter aortic valve replacement (AVR) or balloon valvuloplasty. The exclusion criteria were AS-related symptoms at baseline (eg, angina, syncope, or dyspnea), nonsevere AS, LVEF of less than 50%, having undergone prior aortic or mitral valve intervention, acute endocarditis at baseline, or the inability to measure LV GLS.

In addition, an age- and sex-matched control group of 220 individuals without structural heart disease was included and used as a reference for measuring LV GLS. The transthoracic echocardiograms of this group of individuals were per-

Key Points

Question What is the natural course of left ventricular global longitudinal strain (LV GLS) and prevalence and prognostic value of impaired LV GLS in patients with asymptomatic severe aortic stenosis (AS) and preserved left ventricular ejection fraction?

Findings In this registry-based study of 220 patients, asymptomatic patients with severe AS showed significantly impaired LV GLS compared with 220 controls with further deterioration over time. Patients with impaired LV GLS at baseline showed a higher risk for developing symptoms and requiring aortic intervention.

Meaning Subclinical myocardial dysfunction that is characterized by impaired LV GLS is often present in patients with asymptomatic severe AS and is associated with symptom development and the need for intervention.

formed at the Leiden University Medical Center. The referral reasons to perform echocardiography in this group were atypical chest pain, palpitations, or syncope without the presence of a murmur.

Baseline patient demographics and clinical follow-up data were gathered and analyzed retrospectively using the departmental patient information systems and hospital records. This retrospective analysis of clinically acquired data was approved by the respective institutional review boards of each participating center, and consent was waived due to the retrospective nature of the study.

Transthoracic Echocardiography

Transthoracic echocardiography was performed in all patients at rest in the left decubitus position using commercially available ultrasonography systems. Conventional LV dimensions and function as well as AVA were measured following current recommendations.¹⁷ Additionally, LV GLS was measured with a 2-dimensional speckle tracking analysis on apical 2-, 3-, and 4-chamber views using commercially available software (Leiden University Medical Center: EchoPac, version 113; General Electric; Vingmed Ultrasound; Heart Valve Clinic Liège and Institut Universitaire de Cardiologie et de Pneumologie de Québec: 2D Cardiac Performance Analysis; TomTec Imaging Systems).¹⁷ The frame rate of the 2-dimensional echocardiographic data was 40 frames per second or higher. Left ventricular GLS measures the shortening of the myocardial fibers in the longitudinal direction and is conventionally presented as a negative value. Therefore, a less negative LV GLS (ie, closer to 0) represents worse LV systolic function.

Clinical and Echocardiographic Follow-up and End Points

Patients were routinely followed up at the outpatient clinic according to guideline recommendations.¹⁶ The onset of AS-related symptoms was recorded. The medical treatment and timing for AVR was left at the discretion of the treating physician of each institution. The time to symptom development and AVR, as well as the date of all-cause mortality, were recorded as clinical end points for assessing the prognosis.

Table 1. Baseline Clinical and Echocardiographic Characteristics of Patients With Asymptomatic Severe Aortic Stenosis and an Age- and Sex-Matched Cohort of Individuals Without Structural Heart Disease

Variables	Mean (SD)		P Value
	Patients With Asymptomatic Severe AS (n = 220)	Age- and Sex-Matched Cohort (n = 220)	
Age, y	67.9 (13.0)	65.7 (13.3)	.08
Male, No. (%)	126 (57)	126 (57)	>.99
Body surface area, m ²	1.87 (0.2)	1.93 (0.2)	.002
Hypertension, No. (%)	128 (59)	103 (48)	.02
Hypercholesterolemia, No. (%)	103 (47)	54 (25)	<.001
Diabetes, No. (%)	34 (16)	24 (11)	.16
History of smoking, No. (%)	73 (38)	17 (11)	<.001
Coronary artery disease, No. (%)	47 (22)	0	<.001
Prior myocardial infarction, No. (%)	15 (7)	0	<.001
Medication use, No. (%)			
β-Blocker	78 (36)	49 (23)	.002
ACE inhibitor/ARB II	88 (40)	65 (30)	.02
Calcium antagonist	48 (22)	23 (11)	.001
Diuretics	52 (24)	44 (20)	.34
Statins	112 (51)	56 (26)	<.001
Aspirin and/or clopidogrel	93 (43)	48 (22)	<.001
Vitamin K antagonist or NOAC	31 (14)	3 (1)	<.001
Creatinine level, IQR, mg/dL	0.91 (0.79-1.09)	0.90 (0.78-1.05)	.56
Estimated GFR, IQR, mL/min/1.73 m ²	76 (61-89)	80 (65-89)	.48
Baseline Echocardiography			
Valve anatomy, No. (%)			
Tricuspid	170 (77)	220 (100)	<.001
Bicuspid	50 (23)	0	
Aortic valve^a			
Mean gradient, mm Hg	39.4 (12.6)	NA	NA
Peak velocity, m/s	4.0 (0.6)	NA	NA
Area, cm ²	0.86 (0.1)	NA	NA
Area index, cm ² /m ²	0.46 (0.1)	NA	NA
Stroke volume, mL ^a	81.4 (17.1)	NA	NA
Stroke volume index, mL/m ² ^a	43.8 (9.1)	NA	NA
Left ventricular end-diastolic diameter, mm	45.4 (5.8)	48.5 (6.4)	<.001
Left ventricular end-systolic diameter, mm	28.2 (5.0)	30.5 (6.5)	<.001
Intraventricular septal thickness, mm	12.9 (2.3)	10.3 (1.7)	<.001
Posterior wall thickness, mm	11.6 (1.9)	10.0 (2.0)	<.001
Left ventricular mass index, g/m ²	112.0 (27.7)	92.5 (21.4)	<.001
Left ventricular ejection fraction, %	61.5 (5.9)	62.1 (6.3)	.27
Left ventricular global longitudinal strain, %	-17.9 (2.5)	-19.6 (2.1)	<.001

Abbreviations: ACE, angiotensin-converting enzyme; ARB II, angiotensin II receptor blocker; AS, aortic stenosis; GFR, glomerular filtration rate estimated using the Chronic Kidney Disease Epidemiology Collaboration formula; IQR, interquartile range; NA, not applicable; NOAC, novel oral anticoagulants.

SI conversion factor: To convert creatinine to micromoles per liter, multiply by 88.4.

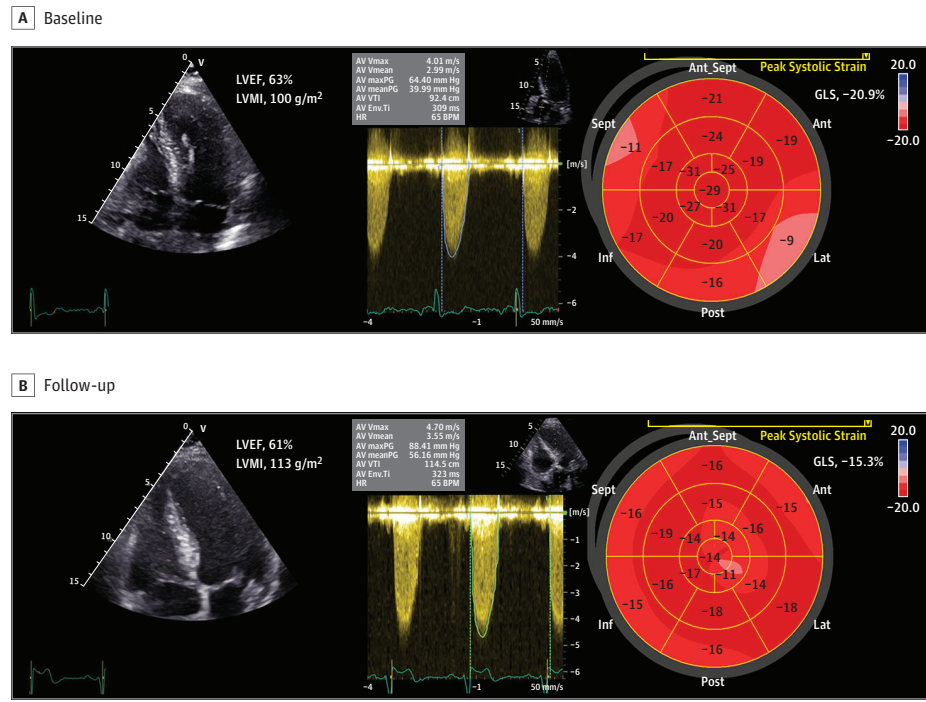
^a Aortic valve gradients, aortic valve area, and stroke volume were only measured for patients with AS.

Statistical Analysis

Categorical variables were presented as numbers (percentage) and continuous variables as means (SD) if normally distributed or medians (interquartile range [IQR]) if otherwise. Histograms were used to evaluate if a Gaussian distribution was present. Comparisons between the total asymptomatic severe AS group and the control group were performed using the *t* test or Mann-Whitney *U* test for continuous variables and the χ^2 test or Fisher exact test for categorical variables as appropriate. The group of patients with asymptomatic severe AS was divided according to the symptom status at the last echo-

cardiogram performed: symptomatic vs asymptomatic. Changes within and between these 2 groups were assessed using linear mixed models, with correction for age, sex, and time to follow-up. To further examine the prognostic value of LV GLS, the study population was divided according to the median baseline LV GLS value. Cumulative event rates were calculated with the Kaplan-Meier method. Two end points were defined: new onset of symptoms and AVR. Comparisons between the 2 groups were performed using log-rank tests. To assess the association between baseline LV GLS and the end points, Cox proportional hazards modeling was used. Spline

Figure 1. Patient With Asymptomatic Severe Aortic Stenosis With Preserved Ejection Fraction at Baseline and Follow-up



Example of a patient with asymptomatic severe aortic stenosis and preserved left ventricular (LV) ejection fraction (LVEF) at baseline (A) and at follow-up (B). Over time, the aortic stenosis severity and LV hypertrophy progressed and LV systolic function as assessed with LV global longitudinal strain (GLS) deteriorated, whereas LVEF remained unchanged. LVMI indicates left ventricular mass index.

models were fitted with overlaying confidence intervals for each end point vs LV GLS on the log-hazards scale, adjusting for age, sex, coronary artery disease, atrial fibrillation, and LV mass index. SPSS, version 23.0 (IBM) was used for the statistical analyses. A *P* value of <.05 was considered statistically significant.

Results

Characteristics of Patients With Asymptomatic Severe AS vs Controls

In total, 220 patients with asymptomatic severe AS and preserved LVEF (mean [SD] age, 68 [13] years; 126 men [57%]) were evaluated in this study (Table 1). Despite comparable LVEF, LV GLS was significantly impaired in the patients with asymptomatic severe AS compared with controls, suggesting that asymptomatic patients with severe AS can harbor subtle myocardial dysfunction. When using the mean LV GLS value of the control group as a reference to define normal ($\leq -19.6\%$) or impaired LV longitudinal systolic function ($> -19.6\%$), 153 patients (70%) with asymptomatic severe AS had impaired LV GLS. The mean (SD) value of LV GLS was not significantly different across the centers (Leiden, -18.2% [2.3%]; Québec, -18.0% [1.8%]; Liège, -17.4% [3.1%]; analysis of variance *P* = .15). In addition, there were no differences across the centers in the proportion of patients with impaired LV GLS (Leiden, 65%; Québec, 81%; Liège, 73%; *P* = .20).

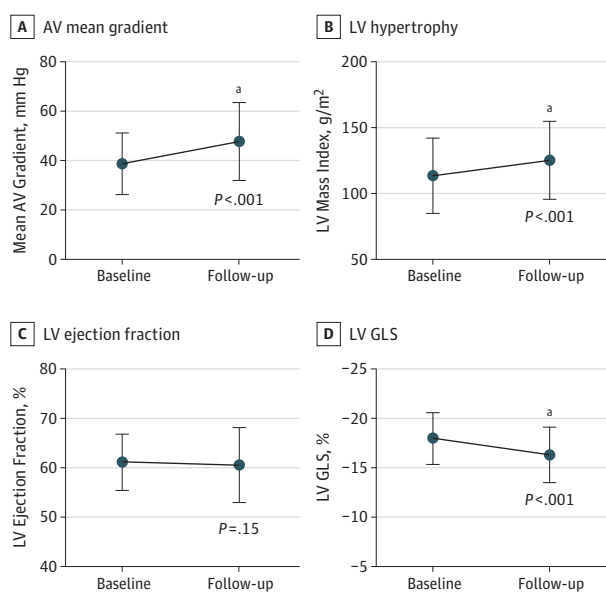
Changes in LV GLS Over Time in Patients With AS

To evaluate the changes in LV GLS in patients with asymptomatic severe AS, a subgroup of 150 patients (68.2%) with severe AS with an available second transthoracic echocardiogram result (at the last clinical follow-up or before AVR) and a feasible speckle tracking analysis result was evaluated. The median time interval between the 2 echocardiograms was 12 months (IQR, 7-23). The changes in valve hemodynamics and LV systolic function are displayed in eTable 1 in the Supplement. Over time, there were significant increases in mean transvalvular gradients and LV mass index, whereas the AVA decreased. While the mean (SD) LVEF remained unchanged (61.2% [5.7%] to 60.6% [7.6%]; *P* = .15), mean (SD) LV GLS showed significant impairment over time (-18.0% [2.6%] to -16.3% [2.8%]; *P* < .001) (Figures 1 and 2), demonstrating increasing subclinical LV dysfunction over time.

Of the 150 patients with echocardiographic follow-up and feasible speckle tracking analysis, 78 (52%) were asymptomatic at follow-up echocardiography and 72 patients (48%) remained asymptomatic. The median (IQR) time from baseline to follow-up echocardiography was similar between these 2 groups (symptomatic, 13 [8-28] months vs asymptomatic, 12 [6-20] months; *P* = .09). Compared with asymptomatic patients, patients who developed symptoms at follow-up showed a higher prevalence of atrial fibrillation (22% vs 10%, respectively; *P* = .05) and had more frequent coronary artery disease (27% vs 16%, respectively; *P* = .09). Table 2 outlines the changes in valve hemodynamics and LV systolic function over time in these patients divided by symptom status at follow-

up. Within both groups, the progression of AS was observed over time with a concomitant increase in LV mass index and impairment in LV GLS without changes in LVEF. Between both groups, no significant differences were observed in valve hemodynamics and LV systolic function, although LV mass index at follow-up was higher in patients with AS who developed symptoms.

Figure 2. Time Course of Valve Hemodynamics and Left Ventricular Systolic Function in 150 Patients With Asymptomatic Severe Aortic Stenosis



Time course of valve hemodynamics in a subgroup of 150 patients with asymptomatic severe aortic stenosis at baseline vs follow-up echocardiography by aortic valve (AV) mean gradient (A), left ventricular (LV) hypertrophy (B) and LV systolic function by LV ejection fraction (C), and LV global longitudinal strain (GLS) (D).

^a $P < .001$.

Prognostic Value of LV GLS in Symptom Development and AVR

Of the 220 patients with asymptomatic severe AS, 118 (54%) developed symptoms during a median follow-up of 12 months (IQR, 5-24). After a median follow-up period of 13 months (IQR, 6-25), 162 patients (74%) received an aortic valve intervention (28 [17%] received transcatheter aortic valve implantation, 130 [80%] underwent surgical AVR, and 4 [3%] underwent balloon valvuloplasty). Most of these patients underwent aortic valve intervention because of symptom development (104 [64%]) or progression of AS severity (40 [25%]); only 18 patients (11%) received an AVR because of other reasons, such as an indication for coronary artery bypass grafting. During follow-up, 28 patients (13%) died; 8 patients (4%) died while scheduled for AVR or when receiving conservative treatment.

To evaluate the prognostic value of baseline LV GLS, the study population was divided into 2 groups according to the median value of baseline LV GLS (more preserved, $\leq -18.2\%$ vs more impaired, $> -18.2\%$) (eTable 2 in the Supplement). Compared with patients with more preserved LV GLS, patients with more impaired LV GLS had a higher prevalence of coronary artery disease (30% vs 15%, $P = .01$) and atrial fibrillation (26% vs 12%, $P = .01$). On transthoracic echocardiography, patients with more impaired LV GLS had a larger LV mass index and lower LVEF than patients with more preserved LV GLS, although mean LVEF was more than 60% in both groups (eTable 2 in the Supplement).

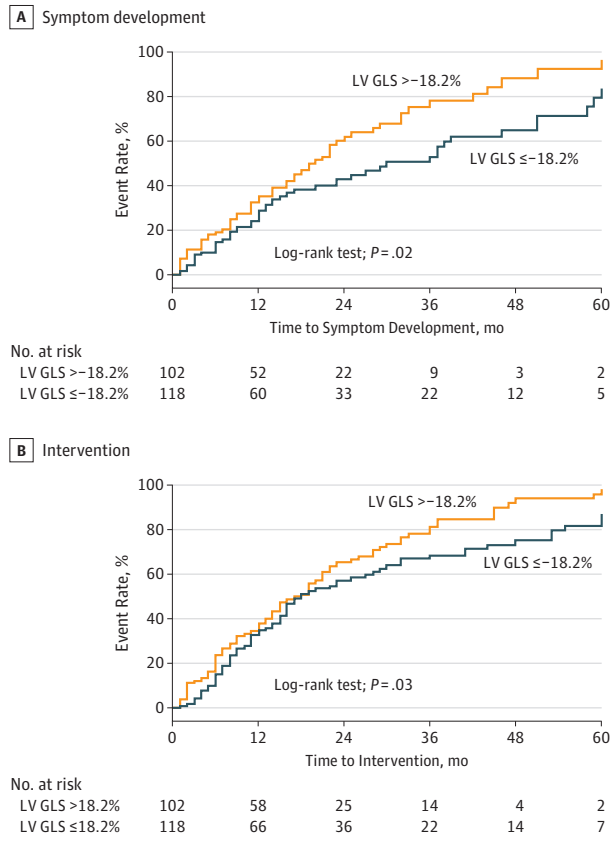
The cumulative event rates for developing symptoms were significantly higher in patients with a baseline LV GLS more than -18.2% compared with patients with an LV GLS -18.2% or less (59% vs 45% at 2-year follow-up, respectively, and 91% vs 79% at 5-year follow-up, respectively; log-rank $P = .02$) (Figure 3A). Similarly, for AVR, the cumulative event rates were significantly higher in patients with impaired baseline LV GLS ($> -18.2\%$) compared with patients with more preserved baseline LV GLS ($\leq -18.2\%$) after 2 years (66% vs 57%, respec-

Table 2. Echocardiographic Parameters in 150 Patients With Asymptomatic Severe Aortic Stenosis at Baseline vs Follow-up Divided by Symptom Status at Follow-up Echocardiography

Variable	Symptomatic at Follow-up (n = 78)			Asymptomatic at Follow-up (n = 72)			P Value Intergroup	
	Mean (SD)		P Value	Mean (SD)		P Value	Baseline	Follow-up
	Baseline	Follow-up		Baseline	Follow-up			
Aortic valve								
Mean gradient, mm Hg	38.4 (11.6)	49.0 (15.8)	<.001	39.4 (13.5)	46.6 (15.8)	<.001	.71	.31
Peak velocity, m/s	3.9 (0.6)	4.4 (0.6)	<.001	4.0 (0.6)	4.3 (0.6)	<.001	.36	.25
Area, cm ²	0.88 (0.1)	0.76 (0.1)	<.001	0.85 (0.1)	0.79 (0.1)	.05	.12	.30
Area index, cm ² /m ²	0.48 (0.1)	0.41 (0.1)	<.001	0.46 (0.1)	0.42 (0.1)	.02	.08	.41
Stroke volume, mL	81.1 (14.6)	80.6 (14.8)	.17	81.7 (19.5)	82.1 (19.2)	.71	.97	.91
Stroke volume index, mL/m ²	44.6 (9.0)	43.7 (8.5)	.34	43.6 (10.1)	43.5 (8.3)	.94	.55	.84
LV								
Mass index, g/m ²	114.0 (27.1)	129.6 (29.2)	<.001	113.7 (30.6)	121.0 (29.6)	.01	.76	.06
Ejection fraction, %	61.4 (6.3)	61.6 (6.9)	.25	61.0 (5.0)	59.5 (8.2)	.28	.65	.06
Global longitudinal strain, %	-17.7 (2.6)	-16.3 (2.9)	<.001	-18.2 (2.6)	-16.4 (2.6)	<.001	.21	.83

Abbreviations: AVR, aortic valve replacement; LV, left ventricular.

Figure 3. Kaplan-Meier Estimates for Event Rates for Symptom Development and Intervention in Patients With Asymptomatic Aortic Stenosis



Kaplan-Meier estimates for event rates for symptom development (A) and intervention (B) in patients with asymptomatic aortic stenosis. Cumulative event rates were compared with the study population that was divided according to left ventricular global longitudinal strain (LV GLS) at baseline more than -18.2% (orange line indicates more impaired) vs -18.2% or less (blue line indicates more preserved).

tively) and 5 years of follow-up (96% vs 82%, respectively; log-rank $P = .03$) (Figure 3B). The spline curves to assess the association between symptom development and aortic valve intervention across a range of LV GLS are shown in the eFigure in the Supplement. For both symptom development and aortic valve intervention, the linearity assumption was not violated (χ^2 , 0.83; $P = .67$, and χ^2 , 1.86; $P = .41$, respectively). For symptom development, a plateau can be seen (eFigure in the Supplement). For aortic valve intervention, a clear increase in hazard ratios can be observed for more impaired LV GLS (eFigure in the Supplement).

Discussion

This study demonstrated that in patients with asymptomatic severe AS and preserved LVEF, LV GLS assessed by speckle tracking imaging is impaired as compared with age- and sex-matched controls without structural heart disease. Over time, patients with asymptomatic severe AS showed a progression

of AS severity accompanied by increasing LV hypertrophy and further impairment of LV GLS, while LVEF remained relatively unchanged. Patients with impaired LV GLS at baseline showed a higher risk for developing symptoms and for needing aortic valve intervention at follow-up as compared with patients with more preserved LV GLS. These findings suggest that LV GLS is a more sensitive marker for early myocardial damage than LVEF in this patient group and may help identify the patients who may benefit from earlier AVR.

LV GLS as a Marker for Subtle LV Dysfunction in Asymptomatic Severe AS

Symptom development and LV systolic dysfunction are the main factors that determine the timing of AVR in patients with severe AS.^{1,2} However, decreased physical activity in the aging AS population may result in the underrecognition or late reporting of symptoms.¹⁸ Zilberszac et al¹⁹ demonstrated that 43% of elderly patients with asymptomatic severe AS who developed symptoms presented with severe heart failure symptoms (New York Heart Association class ≥III). The deterioration of LV systolic function defined by an LVEF of less than 50% can be regarded as a more objective parameter that indicates the need for AVR. However, this will only occur when the concentric remodeled left ventricle fails to maintain normal wall stress because of significant afterload mismatch.²⁰ At this stage, LV remodeling is characterized by progressive myocardial fibrosis, which is not reversible after an intervention.^{21,22} Therefore, more sensitive markers of LV systolic dysfunction are needed at an earlier stage to identify patients with severe AS who are at risk for irreversible myocardial damage. Recently, Stokke et al¹² showed that by inducing concentric LV remodeling with an increase in wall thickness and a reduction in diameter of the LV cavity, the LVEF can remain preserved, whereas LV GLS will be impaired. While the presence of impaired LV GLS with preserved LVEF has been described in symptomatic severe AS,^{8,9,23} the prevalence of impaired LV GLS in asymptomatic severe AS has been less studied. Lafitte et al²⁴ reported significantly impaired LV GLS in 65 patients with asymptomatic severe AS compared with 60 healthy participants (-17.8% [3.5%] vs -21.1% [1.8%], respectively; $P < .05$), while no differences were observed in LVEF (64% [7%] vs 66% [5%], respectively).²⁴ This study extends these findings in a larger population. However, the mean value of LV GLS in this study was more preserved than that reported in previous studies (-18.0% vs -15% to -16.6%).²⁵⁻²⁹ This discrepancy could be explained by the inclusion of older patients in those studies. Furthermore, to our knowledge, this study is the first to report sequential measurements of LV GLS in the period between the initial AS diagnosis and intervention and to demonstrate a clear deterioration of LV GLS without a decline in LVEF.

Prognostic Value of LV GLS in Patients With Asymptomatic Severe AS

Multiple echocardiographic predictors of mortality and other adverse cardiac events have been identified in asymptomatic severe AS with preserved LVEF (ie, peak aortic jet velocity >5.0 m/s,^{4,19,30,31} aortic valve calcification,^{27,32} small AVA,³³ inap-

appropriate LV hypertrophy,³⁴ and increased valvuloarterial impedance³⁵). Data demonstrating the prognostic effect of LV GLS in severe AS and its incremental value over these determinants are accumulating. In a cohort of 395 patients with AS, including 302 patients with severe AS, Kusunose et al¹⁰ demonstrated that LV GLS was an independent predictor of all-cause mortality and had incremental prognostic value on top of known echocardiographic predictors and symptom status. However, only 21% of these patients with severe AS were asymptomatic, and mortality rates were high (25%). Lancellotti et al²⁵ showed in 163 exclusively asymptomatic patients with severe AS that LV GLS was independently associated with the occurrence of cardiac events (ie, symptom development, eventual AVR, and death). Other studies have investigated the prognostic effect of LV GLS in asymptomatic AS, but these often had small patient samples, included moderate AS, or did not report symptom development as an end point.^{6,26-29} In contrast, this study included a larger study population of 220 patients with asymptomatic severe AS with low mortality rates at follow-up (28 patients [13%]) and a more preserved LV GLS at baseline, thus representing a lower-risk study population in an earlier disease stage of severe AS. In addition, this study demonstrated that the natural course of LV GLS is characterized by further deterioration over time. These results provide further insights into the currently available literature by confirming that LV GLS is a sensitive marker for subclinical myocardial dysfunction and might aid in identifying patients who are at risk for symptom development and the need for intervention. Therefore, the present evaluation corroborates that LV GLS holds promise in the preoperative assessment of patients with asymptomatic severe AS without overt signs of LV dysfunction, although further prospective research is needed to determine the exact role of LV GLS in predicting AS progression and severity.

Clinical Implications

In patients with symptomatic severe AS, it has been demonstrated that myocardial fibrosis can be present and persist after AVR.²¹ Diffuse myocardial fibrosis that was noninvasively assessed by native T1 mapping on cardiac magnetic resonance imaging was present in asymptomatic patients with severe AS and was associated with LV GLS that was measured by speckle tracking echocardiography.³⁶ This study shows that LV GLS is often impaired in asymptomatic severe AS and will further deteriorate if left untreated, while LVEF remains unchanged. This suggests that patients with impaired LV GLS at baseline have subclinical myocardial dysfunction that is prob-

ably secondary to diffuse fibrosis, which is not detected by the conventional echocardiographic parameters of LV systolic function. Therefore, the evaluation of LV GLS and consideration of objective signs of AS-related cardiac damage in patients with asymptomatic severe AS with preserved LVEF (as recently suggested in a new AS staging classification³⁷) may help to define the optimal timing for AVR (before symptom development and irreversible myocardial damage occur).

Limitations

This study was limited by its retrospective design, which could have introduced a selection bias. Left ventricular GLS was measured using different platforms, which can lead to slight variations in the quantification of LV systolic dysfunction when considering the current variability in LV GLS measurements across vendors. Although intervendor differences in LV GLS measurements have been reported to be statistically significant, this bias was only moderate and the interobserver and intraobserver reproducibility of LV GLS were comparable with or superior to conventional echocardiographic parameters, such as LVEF.^{38,39} Furthermore, the precision of LV GLS has been shown to be high even in observers with low experience levels.³⁹ The differences in mean LV GLS values or in the prevalence of LV systolic dysfunction based on an LV GLS value of more impaired than -19.6% were not observed across the participating centers. Finally, as the participating centers are tertiary referral hospitals for AVR, referral bias could be present, with subsequent increased rates of AVR. The decision of referral for AVR was left to the discretion of the treating cardiologist.

Conclusions

In asymptomatic severe AS, most patients have impaired LV GLS at the initial diagnosis despite preserved LVEF. Furthermore, during follow-up and before intervention, a further deterioration of LV GLS occurred without a change in LVEF, whereas AS severity progressed and LV hypertrophy increased. Impaired LV GLS at baseline was associated with a higher risk of symptom development and need for aortic valve intervention. Therefore, assessing LV GLS holds promise in the risk assessment of asymptomatic severe AS, although further prospective studies in larger patient populations are warranted to establish the exact role of LV GLS, integrated with other markers of AS severity and progression, in identifying patients who might benefit from earlier aortic valve intervention.

ARTICLE INFORMATION

Accepted for Publication: June 15, 2018.

Published Online: August 15, 2018.
doi:10.1001/jamacardio.2018.2288

Author Affiliations: Heart Lung Center, Leiden University Medical Center, Leiden, the Netherlands (Vollema, Abou, Marsan, Delgado, Bax); GIGA Cardiovascular Sciences, Department of Cardiology, Heart Valve Clinic, University of Liège Hospital, Centre Hospitalier Universitaire Sart Tilman, Liège, Belgium (Sugimoto, Dulgheru, Lancellotti); Institut

Universitaire de Cardiologie et de Pneumologie de Québec, Québec Heart & Lung Institute, Laval University, Québec City, Québec, Canada (Shen, Tastet, Clavel, Pibarot); Department of Cardiology, Princess Alexandra Hospital, University of Queensland, Brisbane, Australia (Ng); Department of Medical Statistics, Leiden University Medical Center, Leiden, the Netherlands (Mertens); Gruppo Villa Maria Care and Research, Anthea Hospital, Bari, Italy (Lancellotti); Cardiovascular Research Foundation, New York, New York (Genereux, Leon); New York-Presbyterian Hospital, Columbia

University, Medical Center, New York (Genereux, Leon); Gagnon Cardiovascular Institute, Morristown Medical Center, Morristown, New Jersey (Genereux); Hôpital du Sacré-Coeur de Montréal, Université de Montréal, Montréal, Québec, Canada (Genereux).

Author Contributions: Drs Vollema and Delgado had full access to all of the data in the study and take responsibility for the integrity of the data and the accuracy of the data analysis.

Concept and design: Vollema, Ajmone, Delgado, Bax.

Acquisition, analysis, or interpretation of data: Vollema, Sugimoto, Shen, Tastet, Ng, Abou, Delgado, Bax.

Drafting of the manuscript: Vollema, Delgado, Bax.

Critical revision of the manuscript for important intellectual content: Vollema, Sugimoto, Shen, Tastet, Ng, Abou, Ajmone, Marsan, Dulgheru, Lancellotti, Clavel, Pibarot, Genereux, Leon, Delgado, Bax.

Statistical analysis: Vollema, Ng, Mertens, Delgado.

Supervision: Delgado, Bax.

Conflict of Interest Disclosures: All authors have completed and submitted the ICMJE Form for Disclosure of Potential Conflicts of Interest. The Department of Cardiology, Leiden University Medical Center received grants from Biotronik, Medtronic, Boston Scientific Corporation, and Edwards Lifesciences. Dr Delgado received speaker fees from Abbott Vascular. Dr Clavel received a research scholarship from Fonds de Recherche en Santé du Québec. Dr Pibarot holds the Canada research chair in Valvular Heart Diseases, his research program is funded by a foundation grant from Canadian Institutes of Health Research, he has core laboratory contracts with Edwards Lifesciences for which he receives no direct compensation, and he is a consultant for St Jude Medical. Dr Genereux received consultant fees and speaker fees from Edwards Lifesciences. Dr Leon is a member of the Placement of Aortic Transcatheter Valve Trial executive committee, for which he receives no direct compensation. No other disclosures are reported.

REFERENCES

- Baumgartner H, Falk V, Bax JJ, et al; ESC Scientific Document Group. 2017 ESC/EACTS guidelines for the management of valvular heart disease. *Eur Heart J*. 2017;38(36):2739-2791. doi:10.1093/eurheartj/ehx391
- Nishimura RA, Otto CM, Bonow RO, et al; American College of Cardiology/American Heart Association Task Force on Practice Guidelines. 2014 AHA/ACC guideline for the management of patients with valvular heart disease: a report of the American College of Cardiology/American Heart Association Task Force on Practice Guidelines. *J Am Coll Cardiol*. 2014;63(22):e57-e185. doi:10.1016/j.jacc.2014.02.536
- Pellikka PA, Sarano ME, Nishimura RA, et al. Outcome of 622 adults with asymptomatic, hemodynamically significant aortic stenosis during prolonged follow-up. *Circulation*. 2005;111(24):3290-3295. doi:10.1161/CIRCULATIONAHA.104.495903
- Rosenhek R, Zilberszac R, Schemper M, et al. Natural history of very severe aortic stenosis. *Circulation*. 2010;121(1):151-156. doi:10.1161/CIRCULATIONAHA.109.894170
- Taniguchi T, Morimoto T, Shiomi H, et al; CURRENT AS Registry Investigators. Initial surgical versus conservative strategies in patients with asymptomatic severe aortic stenosis. *J Am Coll Cardiol*. 2015;66(25):2827-2838. doi:10.1016/j.jacc.2015.10.001
- Généreux P, Stone GW, O'Gara PT, et al. Natural history, diagnostic approaches, and therapeutic strategies for patients with asymptomatic severe aortic stenosis. *J Am Coll Cardiol*. 2016;67(19):2263-2288. doi:10.1016/j.jacc.2016.02.057
- Redfors B, Pibarot P, Gillam LD, et al. Stress testing in asymptomatic aortic stenosis. *Circulation*. 2017;135(20):1956-1976. doi:10.1161/CIRCULATIONAHA.116.025457
- Ng AC, Delgado V, Bertini M, et al. Alterations in multidirectional myocardial functions in patients with aortic stenosis and preserved ejection fraction: a two-dimensional speckle tracking analysis. *Eur Heart J*. 2011;32(12):1542-1550. doi:10.1093/eurheartj/ehx084
- Kearney LG, Lu K, Ord M, et al. Global longitudinal strain is a strong independent predictor of all-cause mortality in patients with aortic stenosis. *Eur Heart J Cardiovasc Imaging*. 2012;13(10):827-833. doi:10.1093/ehjci/jes115
- Kusunose K, Goodman A, Parikh R, et al. Incremental prognostic value of left ventricular global longitudinal strain in patients with aortic stenosis and preserved ejection fraction. *Circ Cardiovasc Imaging*. 2014;7(6):938-945. doi:10.1161/CIRCIMAGING.114.002041
- Klaeboe LG, Haland TF, Leren IS, et al. Prognostic value of left ventricular deformation parameters in patients with severe aortic stenosis: a pilot study of the usefulness of strain echocardiography. *J Am Soc Echocardiogr*. 2017;30(8):727-735.e1. doi:10.1016/j.echo.2017.04.009
- Stokke TM, Hasselberg NE, Smedsrud MK, et al. Geometry as a confounder when assessing ventricular systolic function: comparison between ejection fraction and strain. *J Am Coll Cardiol*. 2017;70(8):942-954. doi:10.1016/j.jacc.2017.06.046
- Ng ACT, Pihadi EA, Antoni ML, et al. Left ventricular global longitudinal strain is predictive of all-cause mortality independent of aortic stenosis severity and ejection fraction [published online July 28, 2017]. *Eur Heart J Cardiovasc Imaging*.
- Dahl JS, Videbæk L, Poulsen MK, Rudbæk TR, Pellikka PA, Møller JE. Global strain in severe aortic valve stenosis: relation to clinical outcome after aortic valve replacement. *Circ Cardiovasc Imaging*. 2012;5(5):613-620. doi:10.1161/CIRCIMAGING.112.973834
- Baumgartner H, Hung J, Bermejo J, et al. Recommendations on the echocardiographic assessment of aortic valve stenosis: a focused update from the European Association of Cardiovascular Imaging and the American Society of Echocardiography. *Eur Heart J Cardiovasc Imaging*. 2017;18(3):254-275. doi:10.1093/ehjci/jew335
- Vahanian A, Alfiery O, Andreotti F, et al; Joint Task Force on the Management of Valvular Heart Disease of the European Society of Cardiology (ESC); European Association for Cardio-Thoracic Surgery (EACTS). Guidelines on the management of valvular heart disease (version 2012). *Eur Heart J*. 2012;33(19):2451-2496. doi:10.1093/eurheartj/ehs109
- Lang RM, Badano LP, Mor-Avi V, et al. Recommendations for cardiac chamber quantification by echocardiography in adults: an update from the American Society of Echocardiography and the European Association of Cardiovascular Imaging. *Eur Heart J Cardiovasc Imaging*. 2015;16(3):233-270. doi:10.1093/ehjci/jev014
- Osnabrugge RL, Mylotte D, Head SJ, et al. Aortic stenosis in the elderly: disease prevalence and number of candidates for transcatheter aortic valve replacement: a meta-analysis and modeling study. *J Am Coll Cardiol*. 2013;62(11):1002-1012. doi:10.1016/j.jacc.2013.05.015
- Zilberszac R, Gabriel H, Schemper M, Laufer G, Maurer G, Rosenhek R. Asymptomatic severe aortic stenosis in the elderly. *JACC Cardiovasc Imaging*. 2017;10(1):43-50. doi:10.1016/j.jcmg.2016.05.015
- Carabello BA. Aortic regurgitation. A lesion with similarities to both aortic stenosis and mitral regurgitation. *Circulation*. 1990;82(3):1051-1053. doi:10.1161/01.CIR.82.3.1051
- Weidemann F, Herrmann S, Störk S, et al. Impact of myocardial fibrosis in patients with symptomatic severe aortic stenosis. *Circulation*. 2009;120(7):577-584. doi:10.1161/CIRCULATIONAHA.108.847772
- Treibel TA, López B, González A, et al. Reappraising myocardial fibrosis in severe aortic stenosis: an invasive and non-invasive study in 133 patients. *Eur Heart J*. 2018;39(8):699-709. doi:10.1093/eurheartj/ehx353
- Delgado V, Tops LF, van Bommel RJ, et al. Strain analysis in patients with severe aortic stenosis and preserved left ventricular ejection fraction undergoing surgical valve replacement. *Eur Heart J*. 2009;30(24):3037-3047. doi:10.1093/eurheartj/ehp351
- Lafitte S, Perlant M, Reant P, et al. Impact of impaired myocardial deformations on exercise tolerance and prognosis in patients with asymptomatic aortic stenosis. *Eur J Echocardiogr*. 2009;10(3):414-419. doi:10.1093/ejehocardi/jen299
- Lancellotti P, Donal E, Magne J, et al. Risk stratification in asymptomatic moderate to severe aortic stenosis: the importance of the valvular, arterial and ventricular interplay. *Heart*. 2010;96(17):1364-1371. doi:10.1136/hrt.2009.190942
- Zito C, Salvia J, Cusmà-Piccione M, et al. Prognostic significance of valvuloarterial impedance and left ventricular longitudinal function in asymptomatic severe aortic stenosis involving three-cuspid valves. *Am J Cardiol*. 2011;108(10):1463-1469. doi:10.1016/j.amjcard.2011.06.070
- Yingchoncharoen T, Gibby C, Rodriguez LL, Grimm RA, Marwick TH. Association of myocardial deformation with outcome in asymptomatic aortic stenosis with normal ejection fraction. *Circ Cardiovasc Imaging*. 2012;5(6):719-725. doi:10.1161/CIRCIMAGING.112.977348
- Nagata Y, Takeuchi M, Wu VC, et al. Prognostic value of LV deformation parameters using 2D and 3D speckle-tracking echocardiography in asymptomatic patients with severe aortic stenosis and preserved LV ejection fraction. *JACC Cardiovasc Imaging*. 2015;8(3):235-245. doi:10.1016/j.jcmg.2014.12.009
- Carstensen HG, Larsen LH, Hassager C, Kofoed KF, Jensen JS, Mogelvang R. Basal longitudinal strain predicts future aortic valve replacement in asymptomatic patients with aortic stenosis. *Eur Heart J Cardiovasc Imaging*. 2016;17(3):283-292. doi:10.1093/ehjci/jev143
- Kang DH, Park SJ, Rim JH, et al. Early surgery versus conventional treatment in asymptomatic

very severe aortic stenosis. *Circulation*. 2010;121(13):1502-1509. doi:10.1161/CIRCULATIONAHA.109.909903

31. Bohbot Y, Rusinaru D, Delpierre Q, Marechaux S, Tribouilloy C. Risk stratification of severe aortic stenosis with preserved left ventricular ejection fraction using peak aortic jet velocity: an outcome study. *Circ Cardiovasc Imaging*. 2017;10(10):e006760. doi:10.1161/CIRCIMAGING.117.006760

32. Rosenhek R, Binder T, Porenta G, et al. Predictors of outcome in severe, asymptomatic aortic stenosis. *N Engl J Med*. 2000;343(9):611-617. doi:10.1056/NEJM200008313430903

33. Maréchaux S, Ringle A, Rusinaru D, Debry N, Bohbot Y, Tribouilloy C. Prognostic value of aortic valve area by doppler echocardiography in patients

with severe asymptomatic aortic stenosis. *J Am Heart Assoc*. 2016;5(5):e003146. doi:10.1161/JAHA.115.003146

34. Cioffi G, Faggiano P, Vizzardi E, et al. Prognostic effect of inappropriately high left ventricular mass in asymptomatic severe aortic stenosis. *Heart*. 2011;97(4):301-307. doi:10.1136/hrt.2010.192997

35. Hachicha Z, Dumesnil JG, Pibarot P. Usefulness of the valvuloarterial impedance to predict adverse outcome in asymptomatic aortic stenosis. *J Am Coll Cardiol*. 2009;54(11):1003-1011. doi:10.1016/j.jacc.2009.04.079

36. Lee SP, Lee W, Lee JM, et al. Assessment of diffuse myocardial fibrosis by using MR imaging in asymptomatic patients with aortic stenosis. *Radiology*. 2015;274(2):359-369. doi:10.1148/radiol.14141120

37. Généreux P, Pibarot P, Redfors B, et al. Staging classification of aortic stenosis based on the extent of cardiac damage. *Eur Heart J*. 2017;38(45):3351-3358. doi:10.1093/eurheartj/ehx381

38. Farsalinos KE, Daraban AM, Ünü S, Thomas JD, Badano LP, Voigt JU. Head-to-head comparison of global longitudinal strain measurements among nine different vendors: the EACVI/ASE inter-vendor comparison study. *J Am Soc Echocardiogr*. 2015;28(10):1171-1181, e2. doi:10.1016/j.echo.2015.06.011

39. Negishi T, Negishi K, Thavendiranathan P, et al; SUCCOUR Investigators. Effect of experience and training on the concordance and precision of strain measurements. *JACC Cardiovasc Imaging*. 2017;10(5):518-522. doi:10.1016/j.jcmg.2016.06.012