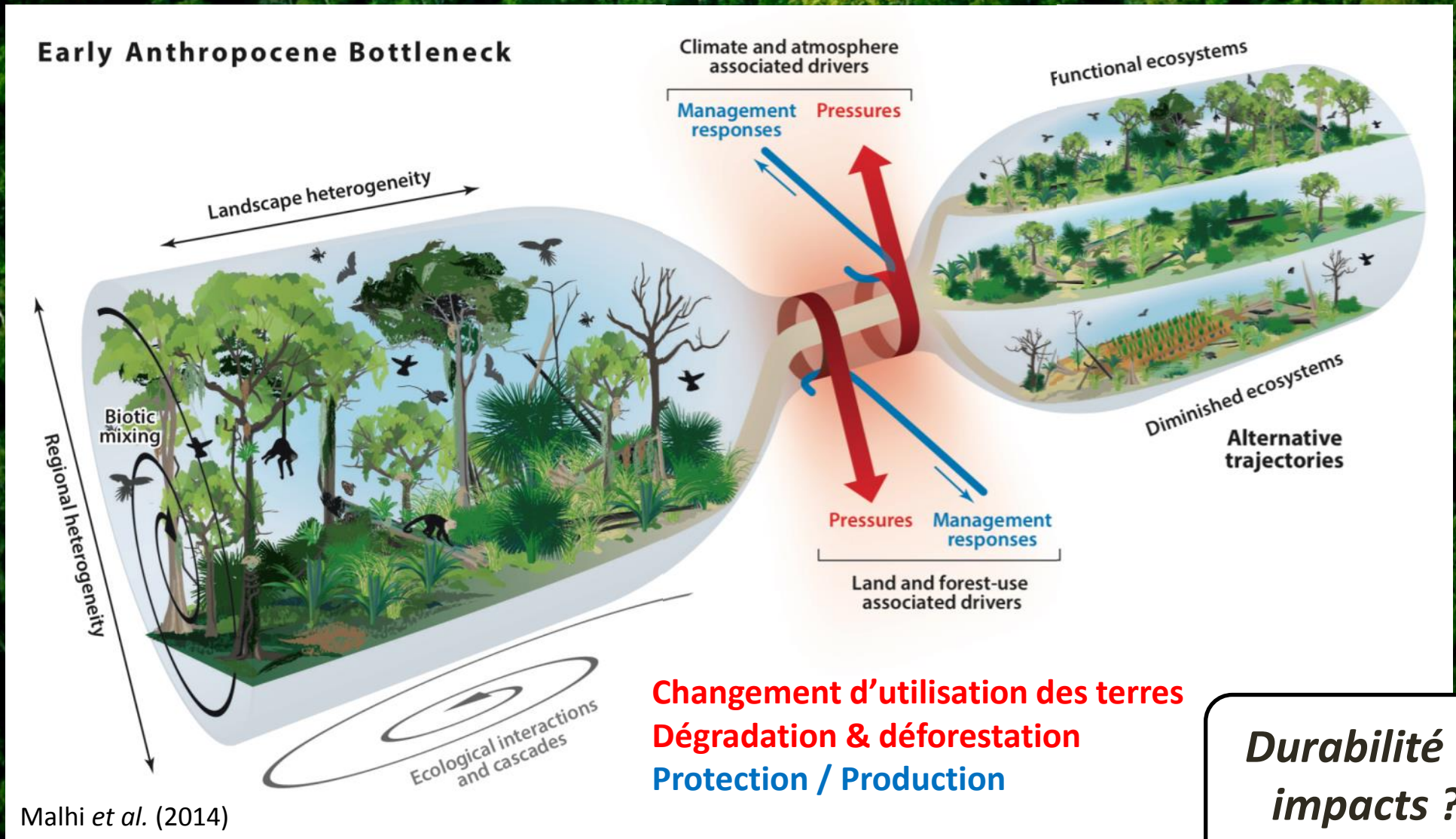


Évaluation de la biodiversité et des services écosystémiques dans les forêts tropicales du sud-est Cameroun

16 octobre 2018

Simon LHOEST

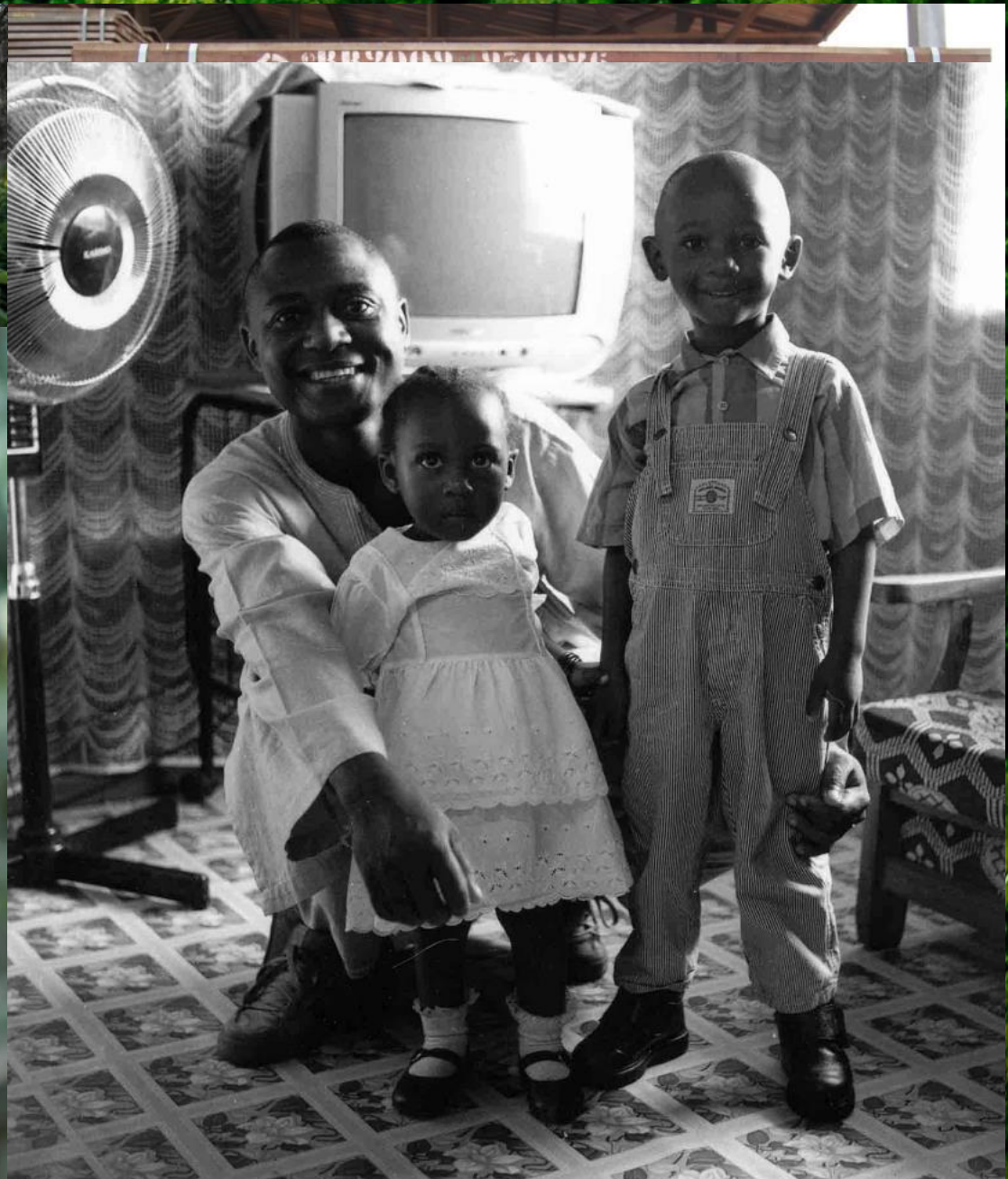


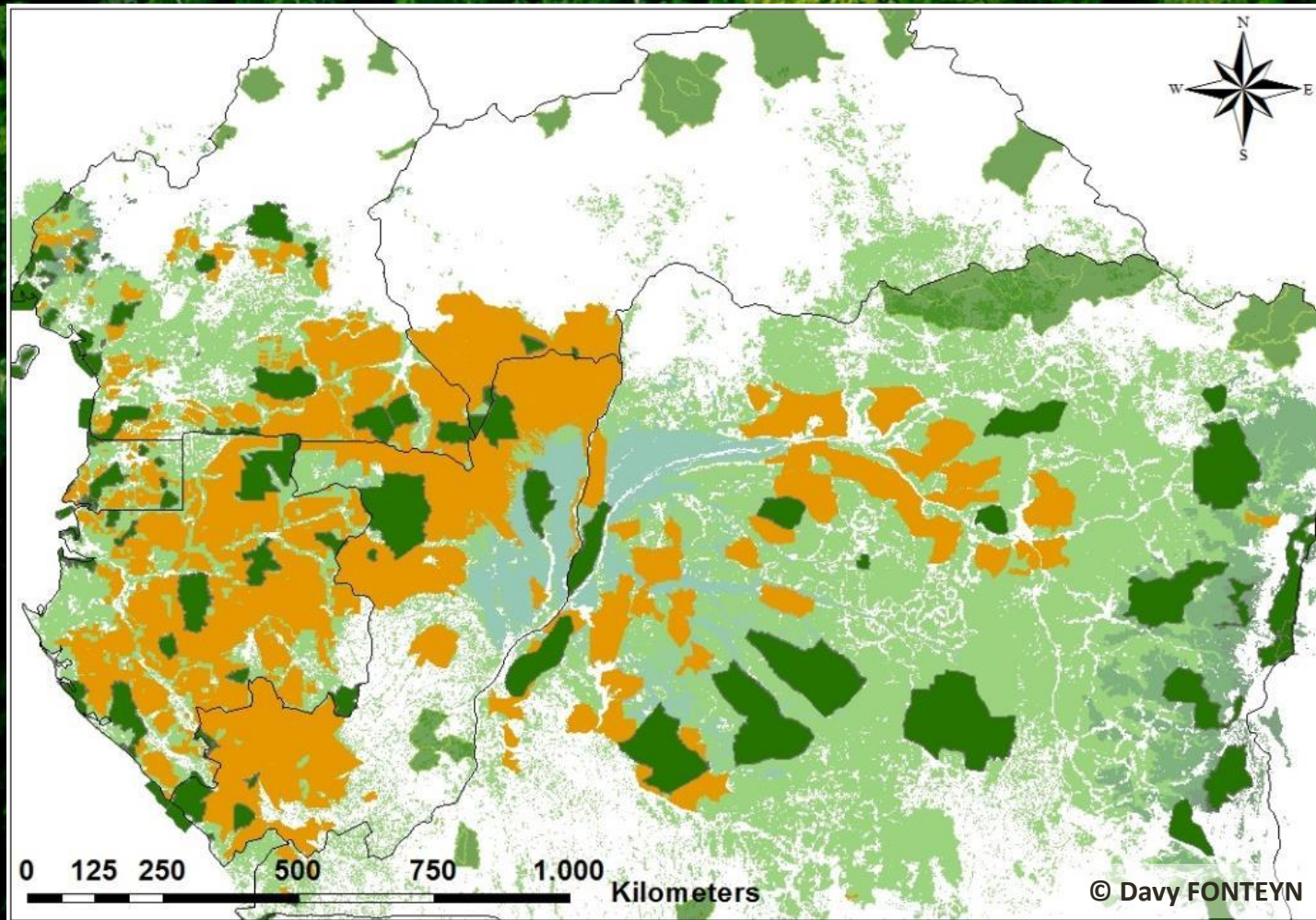


+ Autres changements importants à prévoir : augmentation de la population, recherche de croissance économique, changement climatique mondial, instabilité politique, etc.

La déforestation...

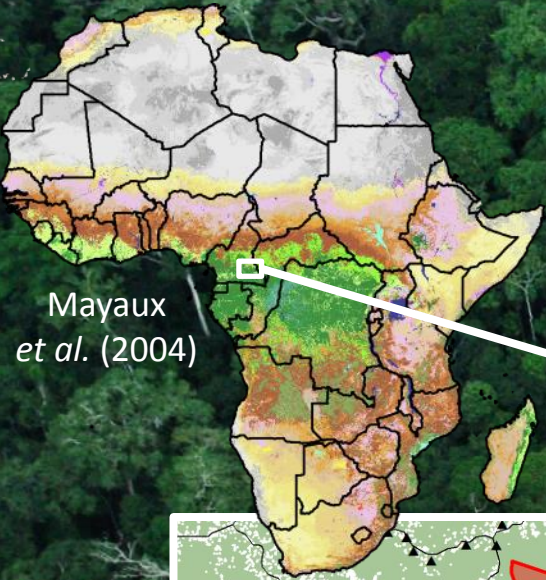






Forêts de production
55 millions hectares
(< 10 % certifiés gestion durable) ➤

Forêts protégées
27 millions hectares

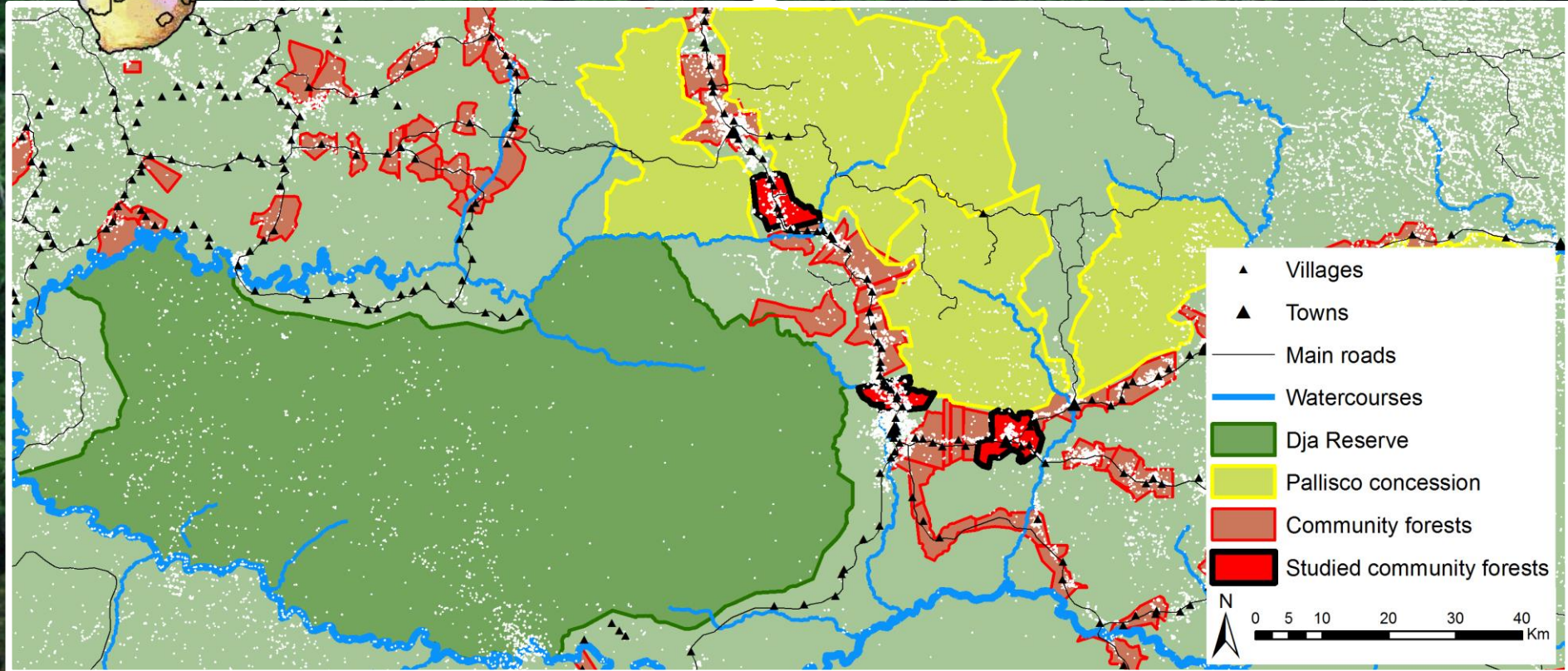


Populations locales :

Bantous et Pygmées Bakas

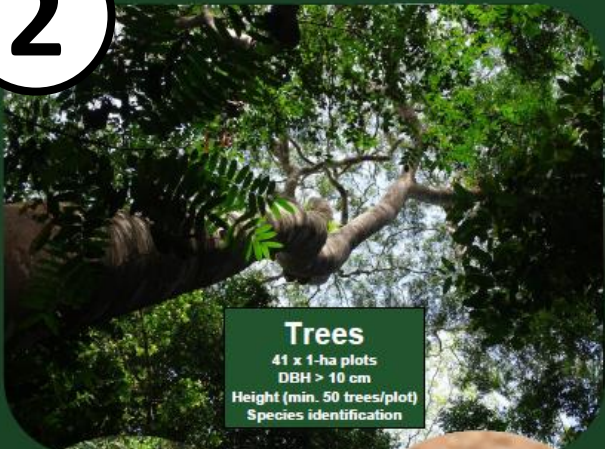
Très dépendants de la forêt pour leurs activités quotidiennes (chasse, pêche, collecte de produits forestiers, agriculture extensive)

Différentes affectations des terres forestières avec différents droits d'usages pour les populations locales



2

Biodiversity



Trees
41 x 1-ha plots
DBH > 10 cm
Height (min. 50 trees/plot)
Species identification



Mammals
6 grids of 11-16 camera traps
2-3 months/grid
Species identification



Dung beetles
75 baited pitfall traps
48 hours/trap
Species identification

3

Ecosystem services

Provisioning



Timber Firewood Meat
Fish NTFP Medicines

Regulating



Water quality Climate & air quality regulation Soil quality

Cultural



Heritage, rites & traditions Education, science & tourism Relaxation

Assessment with biophysical & social approaches

1

Forest stakeholders

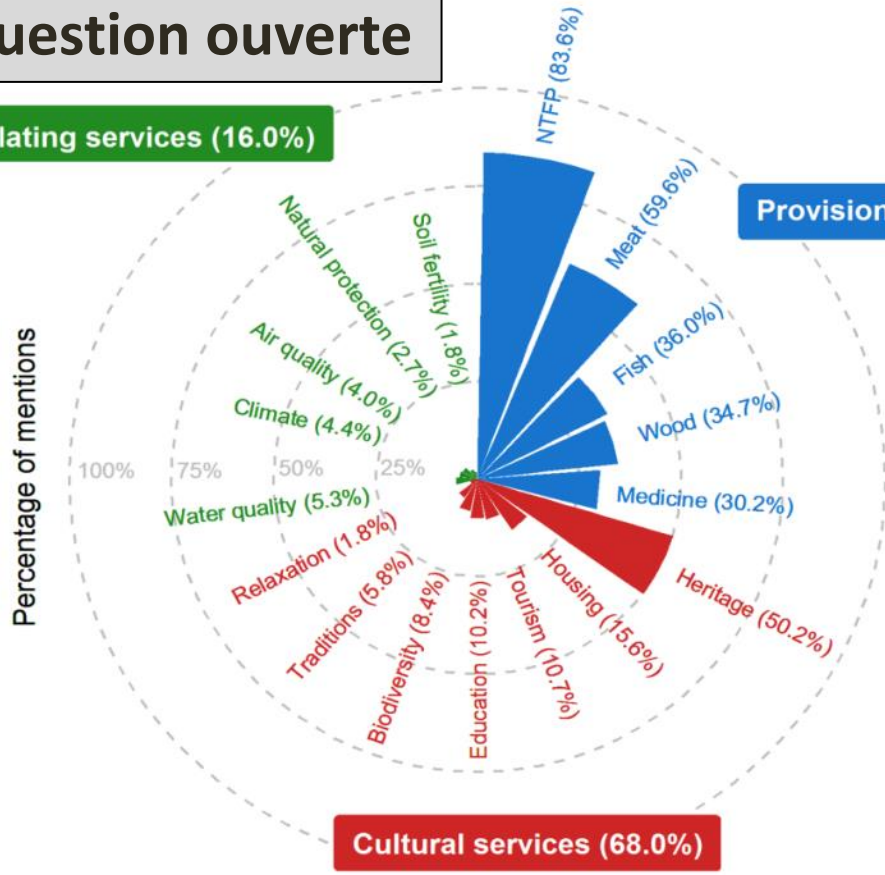


- Local populations
- Forest managers
- Administration

Forest land allocation

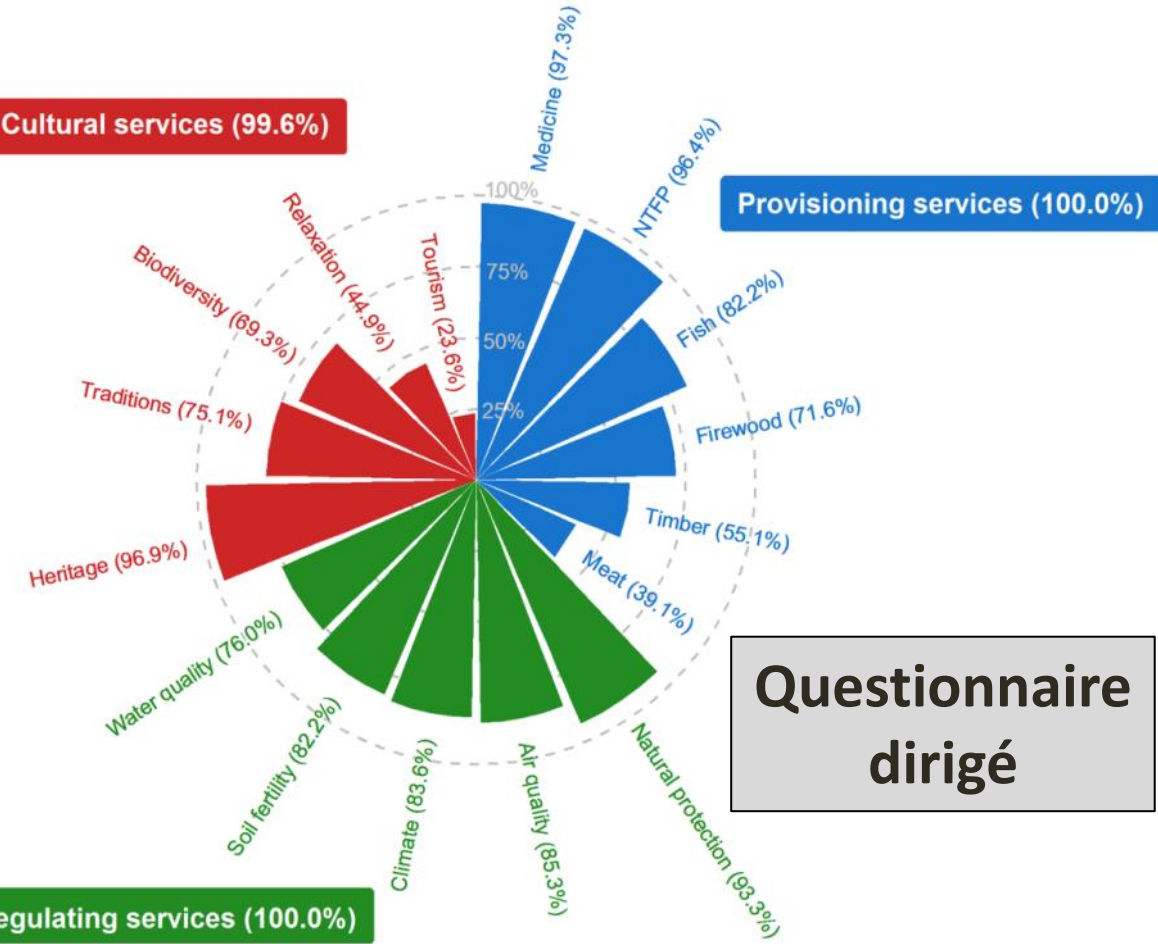
- A protected area (Dja Biosphere Reserve)
- A FSC-certified logging concession (Pallisco company)
- Three community forests (Medjoh, Avilso, Eschiambor)

Question ouverte



Cultural services (99.6%)

Percentage of mentions



Questionnaire dirigé

Exemple : diversité en mammifères



Chimpanzé



Potamochère rouge

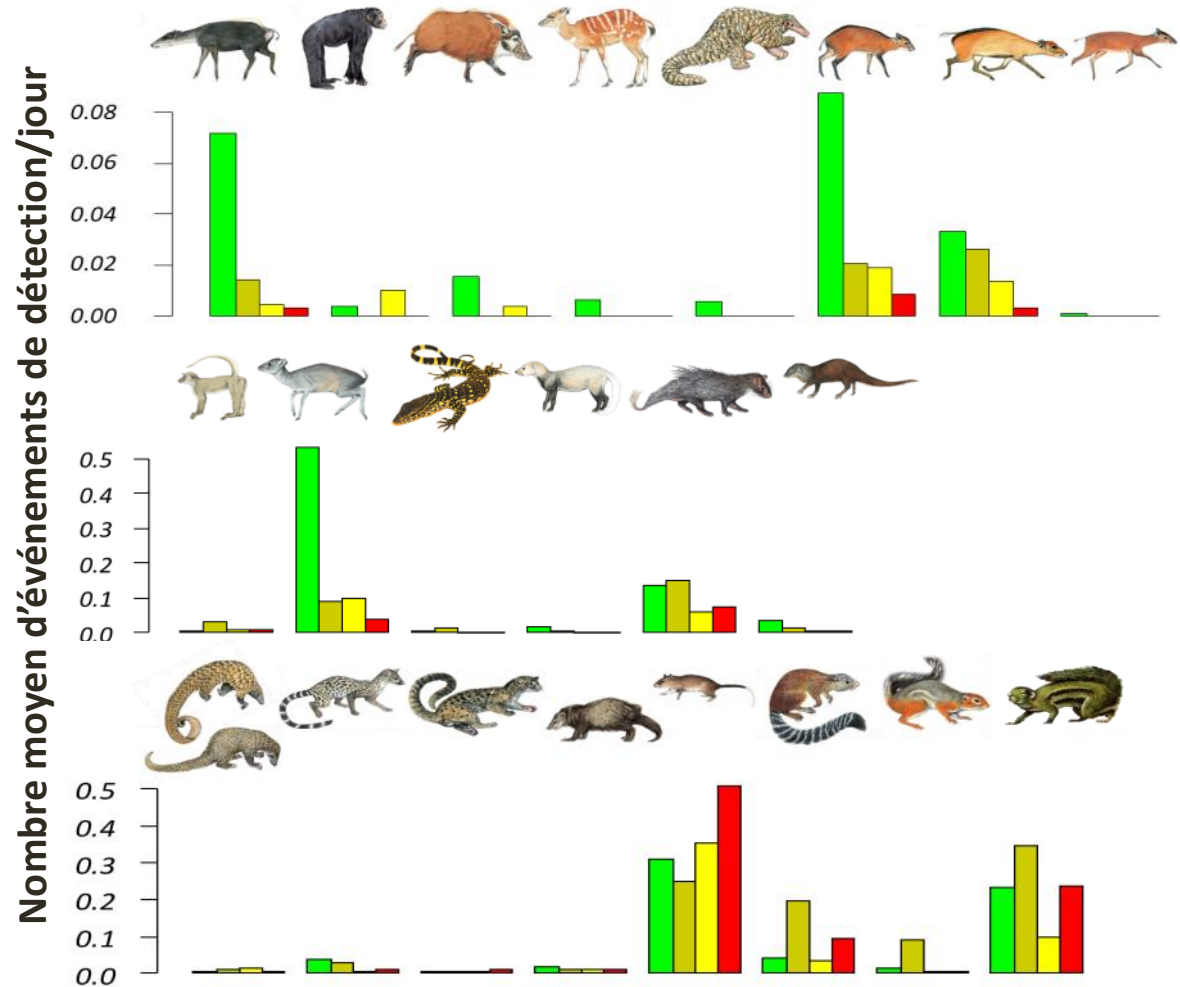
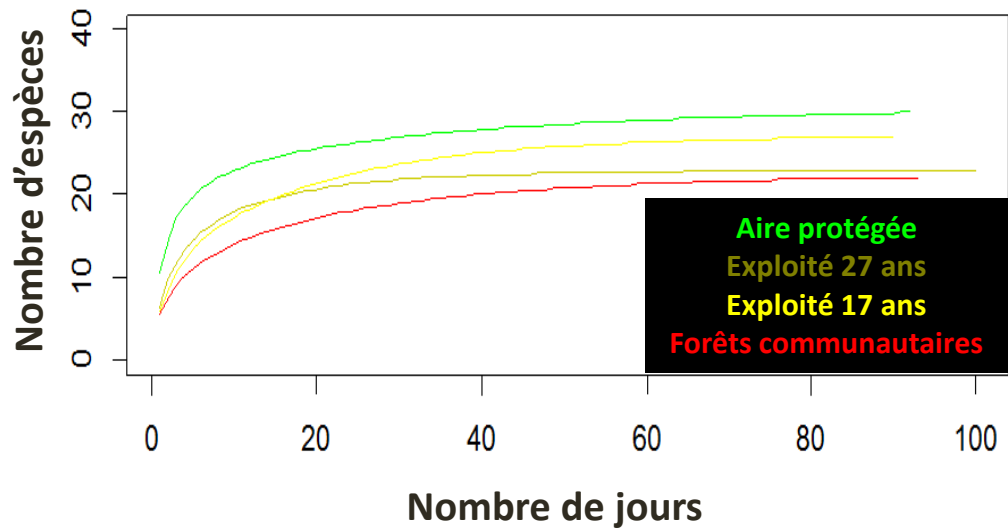


Genette servaline



Pangolin géant

Exemple : diversité en mammifères



Provisioning



Timber



Firewood



Meat



Fish



NTFP



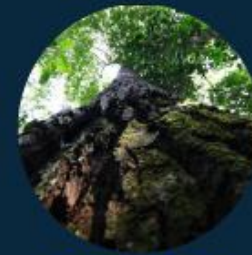
Medicines

**Assessment with
biophysical & social
approaches**

Regulating



Water
quality



Climate &
air quality
regulation



Soil
quality

Cultural



Heritage,
rites &
traditions

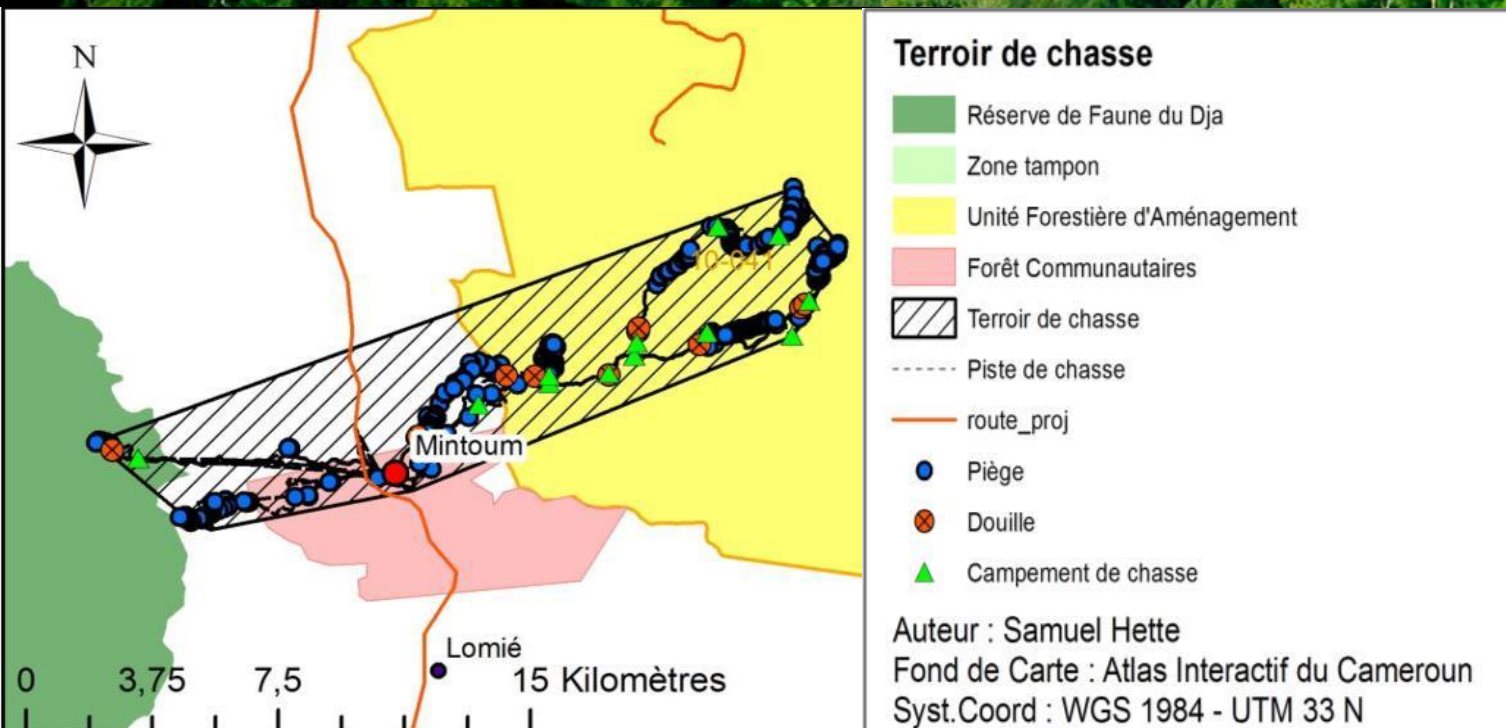


Education,
science &
tourism

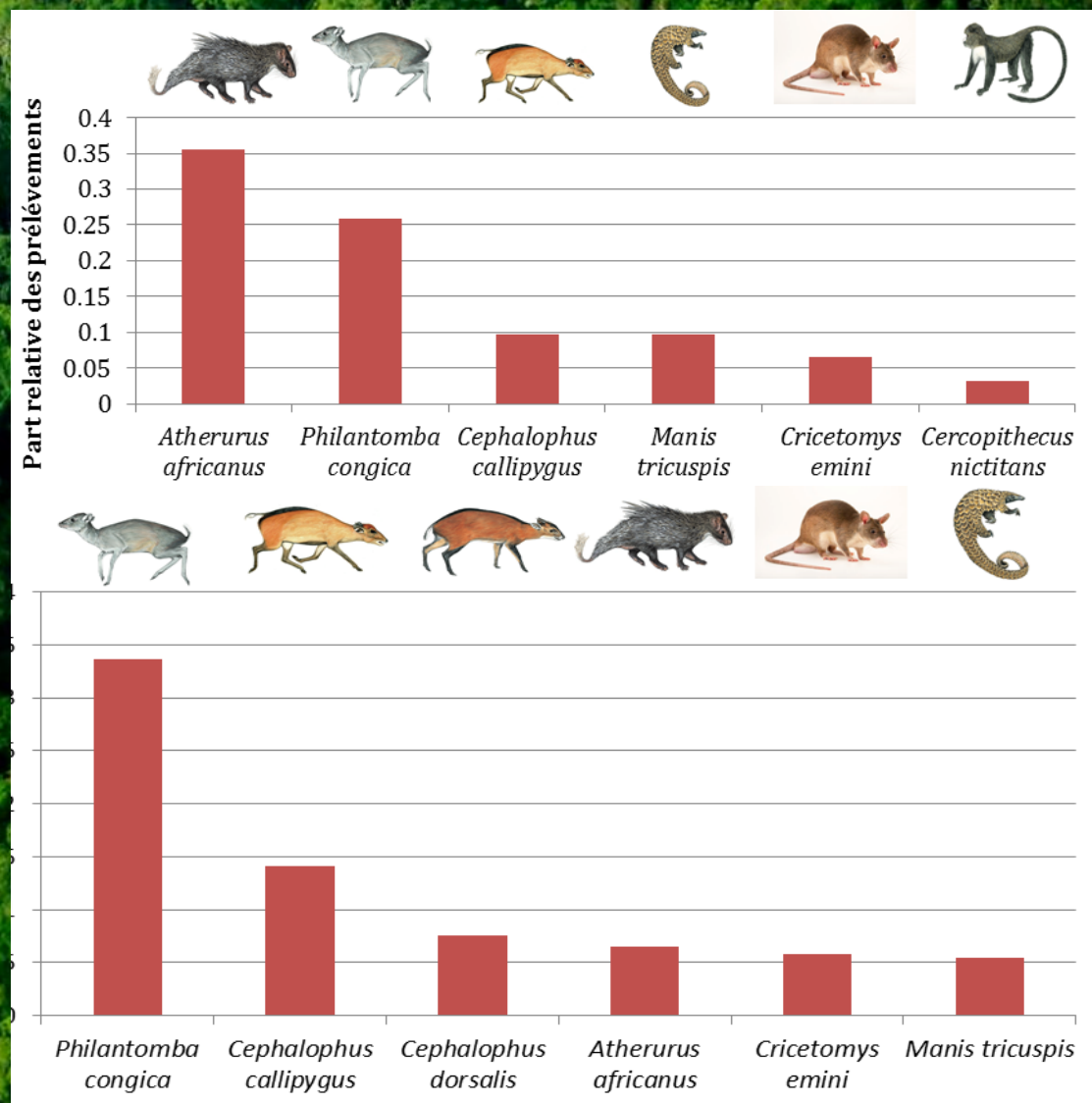


Relaxation

Exemple 1 : chasse et viande de brousse



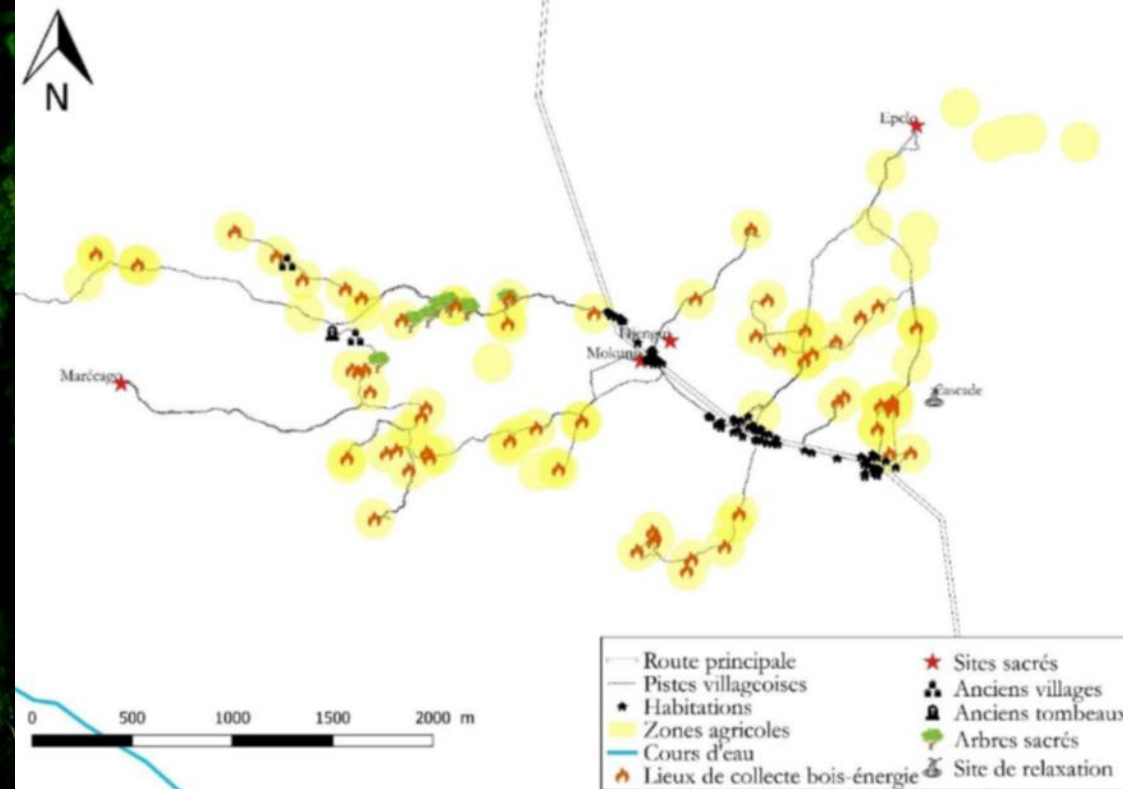
Exemple 1 : chasse et viande de brousse



Exemple 2 : qualité de l'eau des rivières



Exemple 3 : arbres et sites sacrés



Merci pour votre écoute attentive !

© Crédits photographiques : J. ATKISON, J.-Y. DE VLEESCHOUWER, J.-L. DOUCET, Q. EVRARD, D. FONTEYN, S. HETTE, P. JAMAR, J. LAPORTE, S. LHOEST, G. LIGOT, S. QUEVAUVILLERS, S. ROUGERON, J. SCHURE