



LIÈGE université
Geomatics

COARCH'18
Melbourne

Spatio-temporal reasoning in CIDOC CRM

An hybrid ontology with
GeoSPARQL and OWL-Time

Nys Gilles-Antoine
Van Ruymbeke Muriel
Billen Roland

Background

- ▶ Cultural Heritage data modelling
- ▶ CIDOC CRM and extensions are ontologies dedicated to model Cultural Heritage data
- ▶ EPA extension proposal allows unperfected Cultural Heritage data modelling

Spatio-temporal management in CIDOC CRM and extensions

- CRMgeo entities and properties

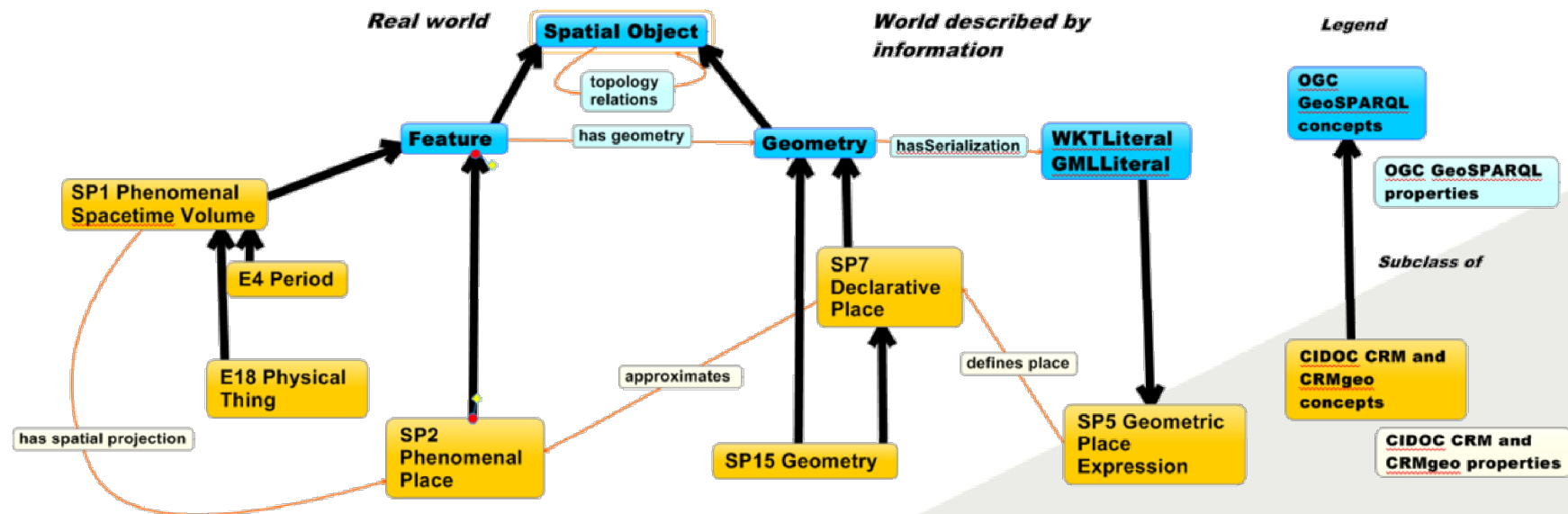
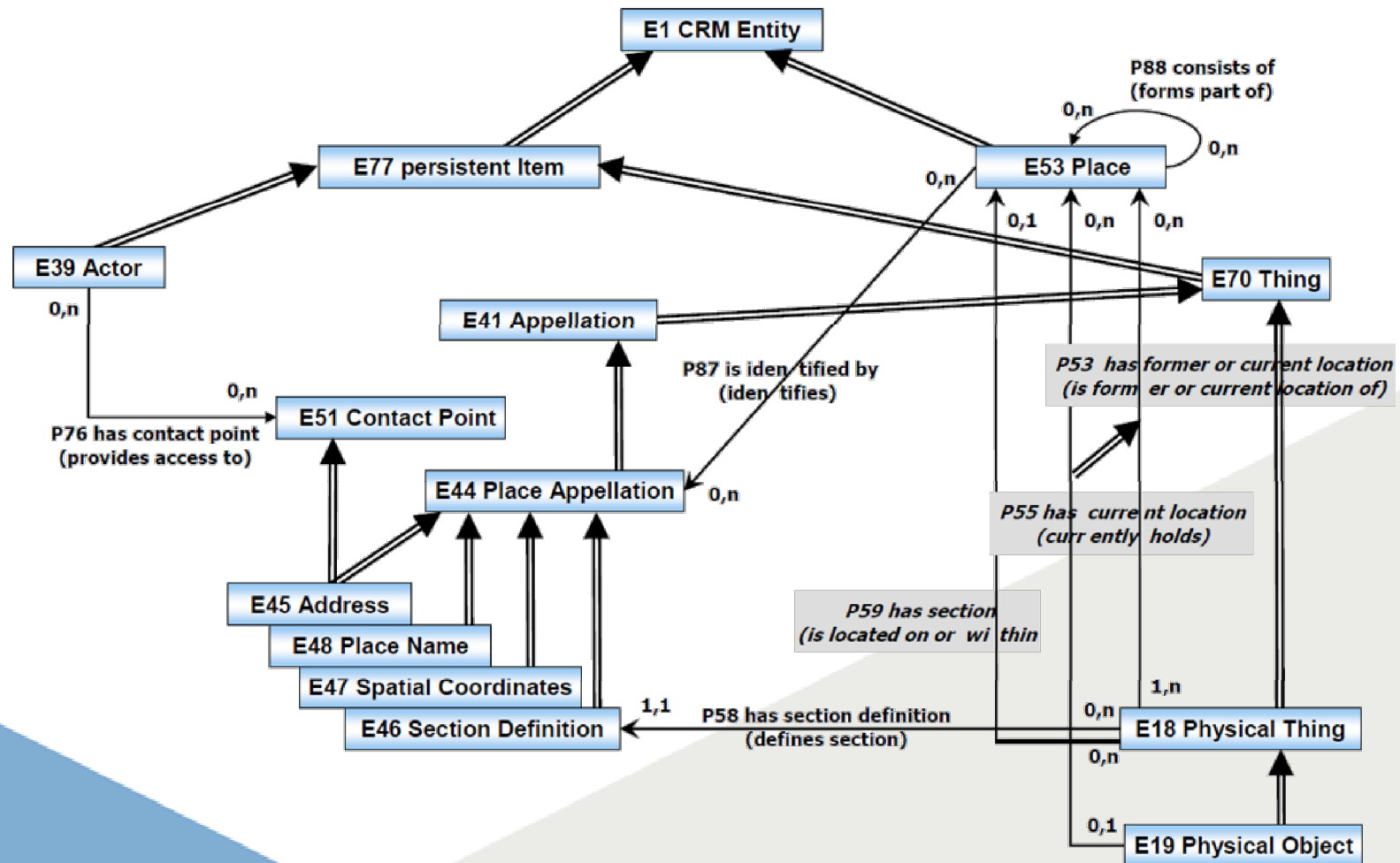


fig. 1: CIDOC CRM and CRMgeo classes and their relations to GeoSPARQL classes

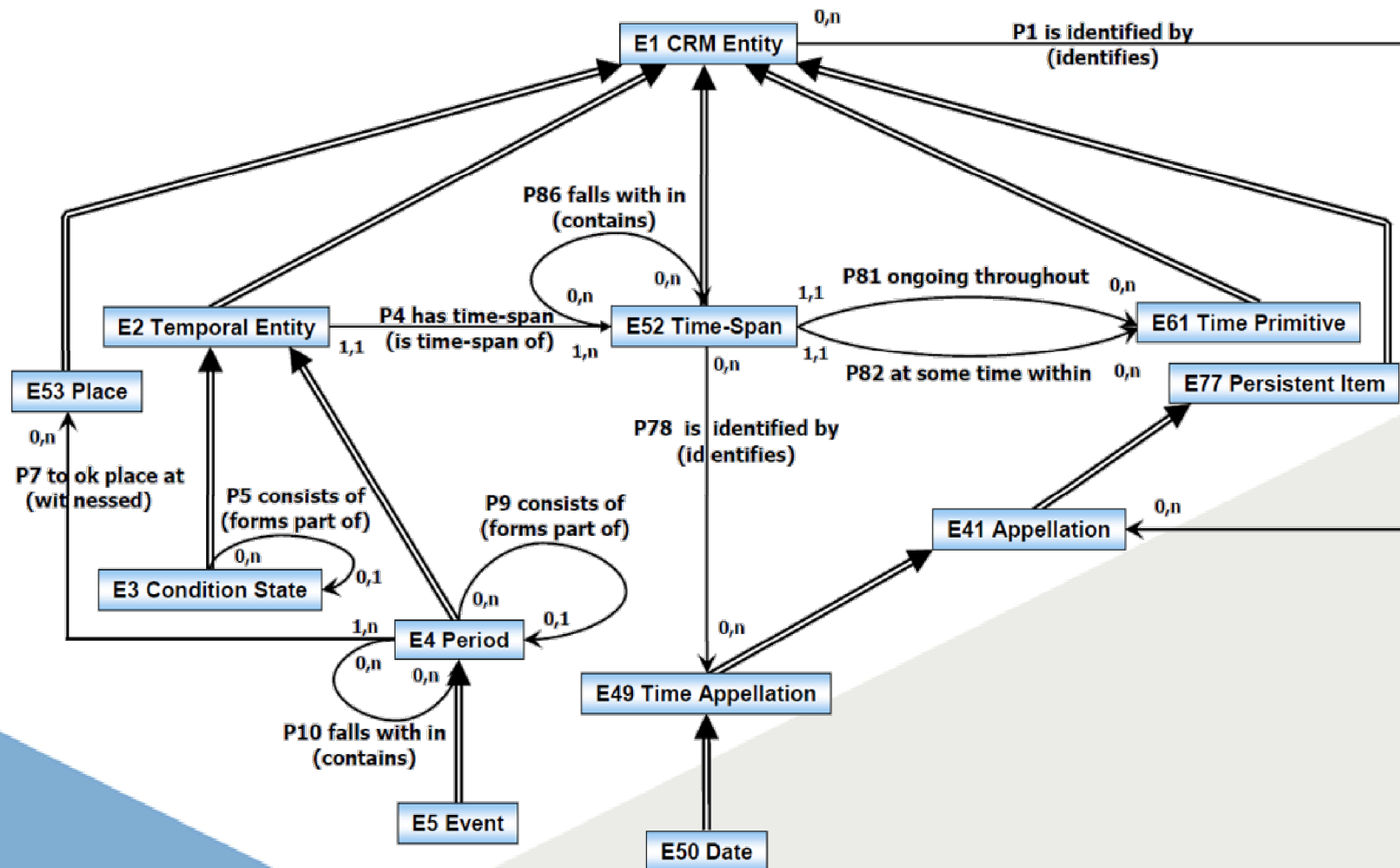
Spatio-temporal management in CIDOC CRM and extensions

- ▶ ...
- ▶ CIDOC CRM entities and properties
 - ▶ CIDOC-CRM 6.2.3 (2018) :
 - ▶ Spatial information: fig. 2
 - ▶ Temporal information: fig. 3

CIDOC 2018 – Spatial information



CIDOC 2018 – Temporal information



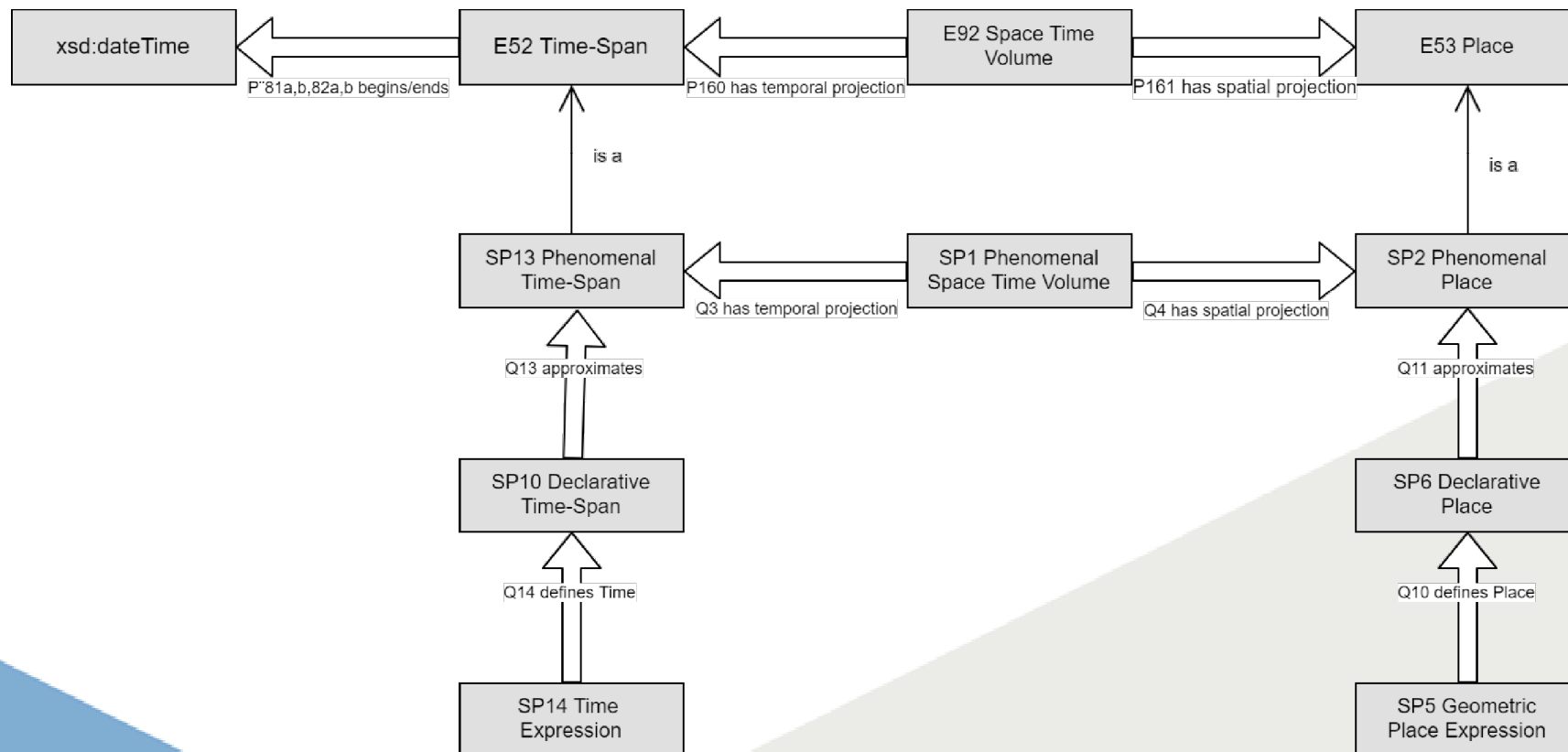
CIDOC 2018 – New classes

- ▶ ...
- ▶ CIDOC CRM entities and properties
 - ▶ CIDOC-CRM 6.2.3 (2018)
 - ▶ Beforehand classes :
New scopes of E61 Time Primitive or E94 Space primitive, or Temporal relations (P173 to P178 and P182 to P185).

CIDOC 2018 – Problems

- ▶ ...
- ▶ CIDOC CRM entities and properties
 - ▶ ...
 - ▶ Problem:
 - ▶ CIDOC CRM 6.2.3 : not implemented in RDF
 - ▶ No more links with GeoSPARQL

CIDOC 2018 - Problems



CIDOC - Lacks

- ▶ ...
- ▶ Data types
 - ▶ Time: only xsd:dateTime or xsd:dateTimespan
 - ▶ Geo: No data
- ▶ Data properties
 - ▶ Time: Bag of properties
 - ▶ BUT:
 - ▶ No relative referencement
 - ▶ Domain: E52 Time-Span thus unusable for instances of SP14 Time Expression

CIDOC - Lacks

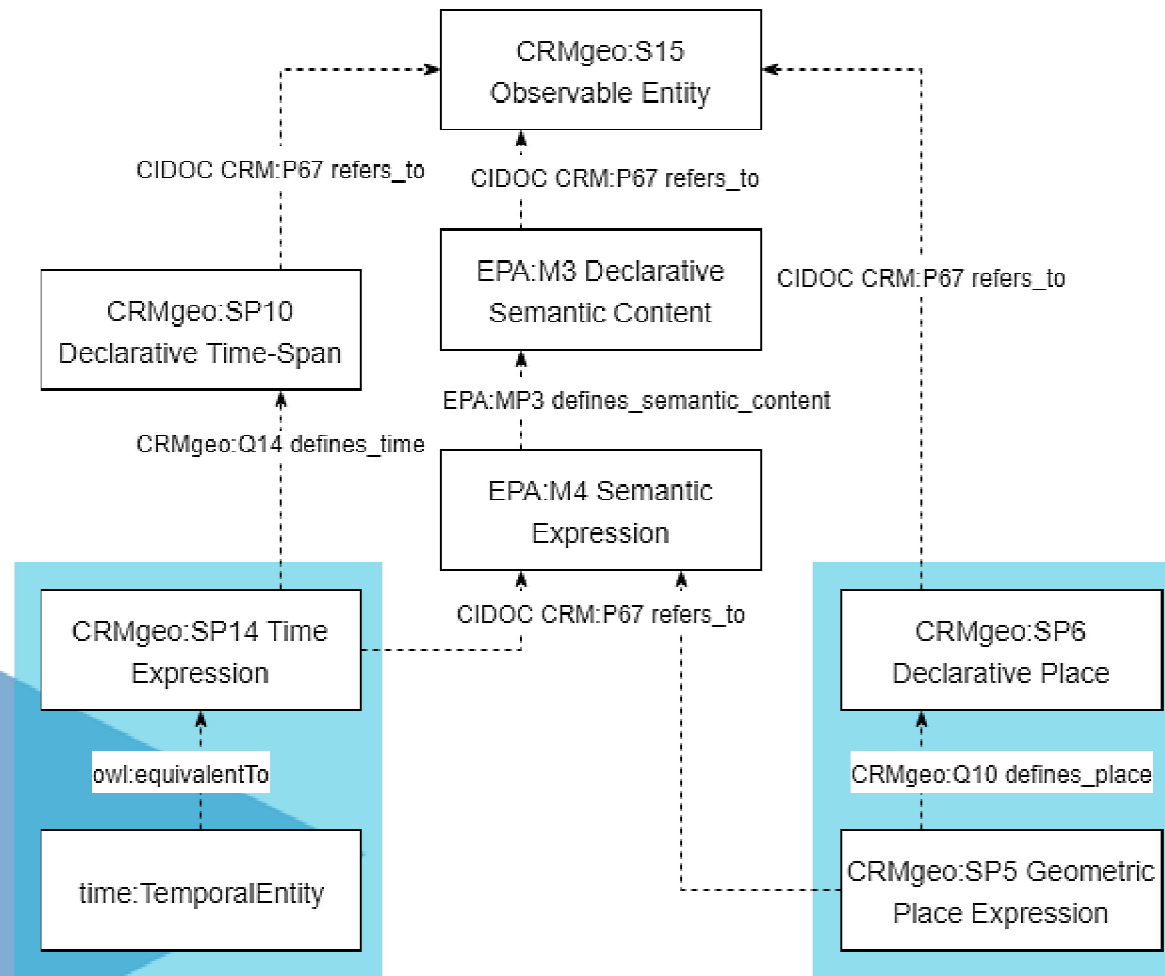
- ▶ ...
- ▶ Lack of workability
 - ▶ No semantics means no reasoning.

Creating SWRL rules or using SPARQL endpoints to make them workable, we need specific data types like `gmlLiteral`, `wktLiteral` or `xsd:gYear`.

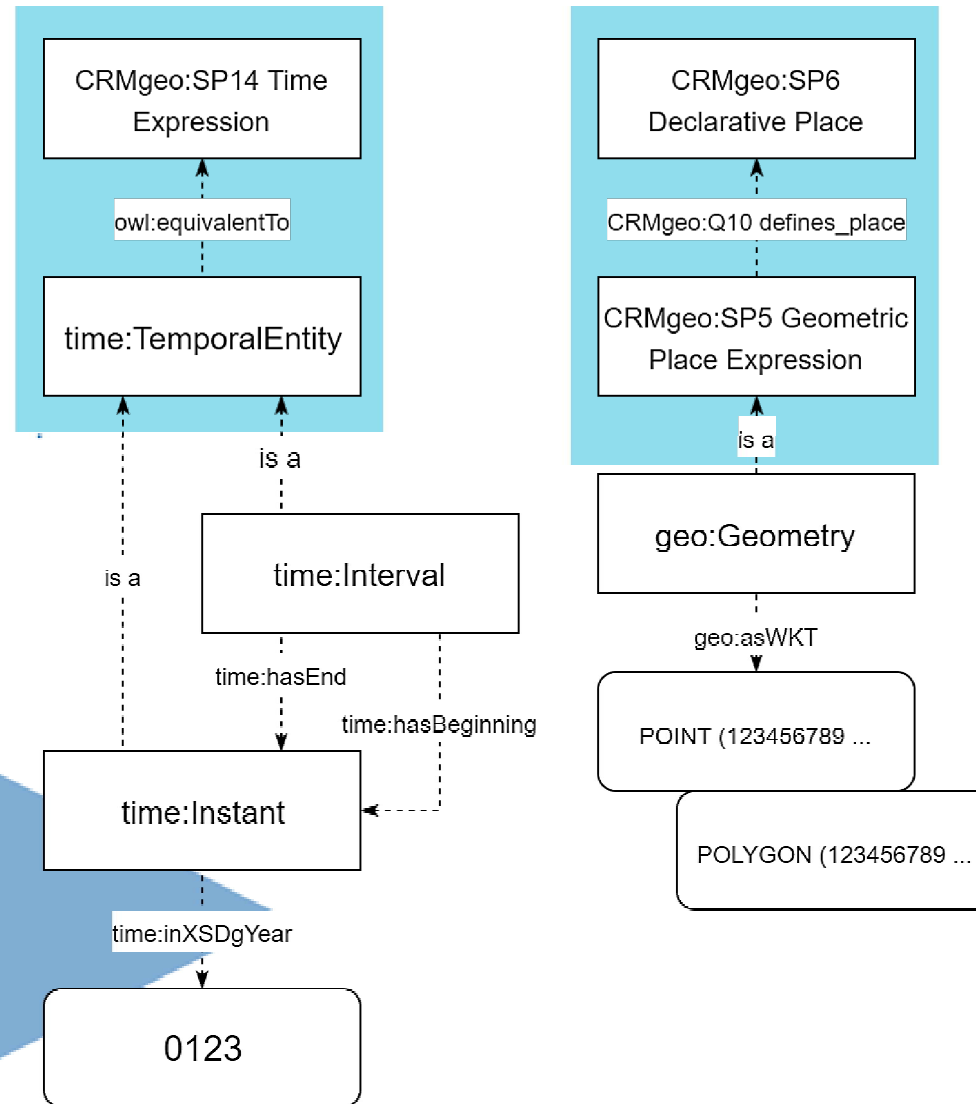
Need of an hybrid ontology

Use of GeoSPARQL and OWL-Time for spatio-temporal data to fulfil data types, data properties and workability

Hybrid ontology



Hybrid ontology



Spatial representation

- ▶ Properties are passive: not workable
- ▶ External tools : functions from GraphDB

Spatio query example

Which objects are in Wallonia?

```
SELECT ?DeclarativePlace WHERE {  
  :Wallonia_geometry CRMGeo:Q10_defines_place  
  :Wallonia.  
  :Wallonia_geometry geosparql:asWKT ?WalWKT.  
  ?Geometry CRMGeo:Q10_defines_place  
  ?DeclarativePlace.  
  ?Geometry geosparql:asWKT ?GeomWKT.  
  FILTER(geof:sfContains(?WalWKT, ?GeomWKT)).  
}
```


Temporal representation

- ▶ Properties are passive
- ▶ Reasoning on SWRL rules
- ▶ SOWL proposition

Temporal representation

Top Rule

```
time:inXSDgYear(?xTime, ?xXSD) ^ time:inXSDgYear(?yTime, ?yXSD) ^  
swrlb:lessThan(?xXSD, ?yXSD) -> time:before(?xTime, ?yTime)
```



intervalBefore Rule

```
time:ProperInterval(?i) ^ time:ProperInterval(?j) ^ time:hasEnd(?i,  
?iE) ^ time:hasBeginning(?j, ?jB) ^ time:before(?iE, ?jB) ->  
time:intervalBefore(?i, ?j)
```



Temporal query example

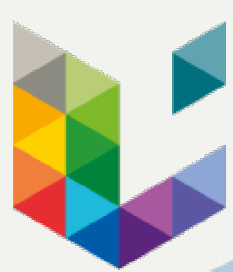
What are the intervals that end after 750 and do not have a known beginning date?

```
SELECT * WHERE {  
  ?interval time:hasEnd ?end .  
  ?end time:inXSDgYear ?xsdE .  
  FILTER(?xsdE > "0750"^^xsd:gYear) .  
  FILTER ( !EXISTS{ ?interval time:hasBeginning  
    ?beginning })  
}
```

Spatio-temporal query example

What are the semantic expression that speak about an entity that existed after 1500 in Wallonia?

```
SELECT ?SemanticExpression ?DeclarativePlace WHERE {  
  ?TimeExpression CRM:P67_refers_to ?SemanticExpression .  
  ?Geometry CRM:P67_refers_to ?SemanticExpression .  
  ?TimeExpression time:hasEnd ?end .  
  ?end time:inXSDgYear ?xsdE .  
  FILTER(?xsdE > "1500"^^xsd:gYear) .  
  :Wallonia_geometry CRMGeo:Q10_defines_place :Wallonia .  
  :Wallonia_geometry geosparql:asWKT ?WalWKT .  
  ?Geometry CRMGeo:Q10_defines_place ?DeclarativePlace .  
  ?Geometry geosparql:asWKT ?GeomWKT .  
  FILTER(geof:sfContains(?WalWKT, ?GeomWKT)) .  
}
```



LIÈGE université Geomatics



Gilles-Antoine Nys

ganys@uliege.be

[@GA_Nys](https://twitter.com/GA_Nys)



Muriel Van Ruymbeke

mvanruymbeke@uliege.be

[@MvanRuymbeke](https://twitter.com/MvanRuymbeke)



Roland Billen

rbillen@uliege.be

[@RolandBillen](https://twitter.com/RolandBillen)

Feel free to contact us