



LIÈGE université
GIGA institute
CONSCIOUSNESS



A comparison of the P300 and PET in patients with disorders of consciousness in absence of response to command

#EPR2049

Jitka Annen, Audrey Wolff, Séverine
Blandiaux, Nicolas Lejeune, Camille
Chatelle, Steven Laureys



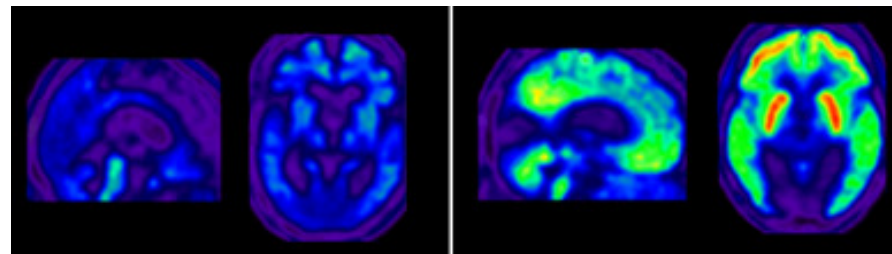


Study design

- 12 DOC patients without response to command
 - 8 UWS, 4 MCS-

UWS

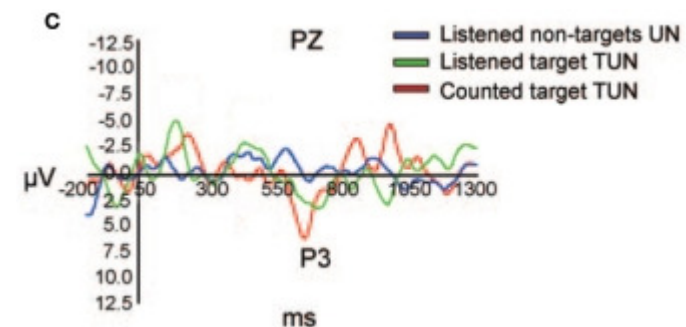
MCS



Thibaut et al., *J Rehabil Med* 2012

- FDG-PET
 - Glucose metabolism

- P300 BCI
 - 70% True pos = good performance
 - VT2: 2 stimuli, 1 deviant
 - Not related to consciousness
 - VT3: 3 stimuli, 2 deviants of which 1 attended upon request
 - Command following, eventually communication



Schnakers et al., *Neurology* 2008

False positives?

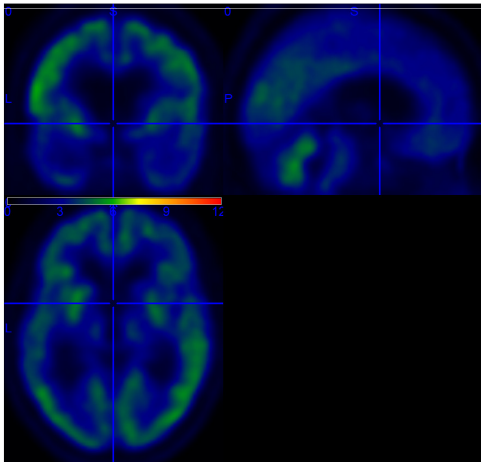


Signs of covert command following and preserved glucose metabolism

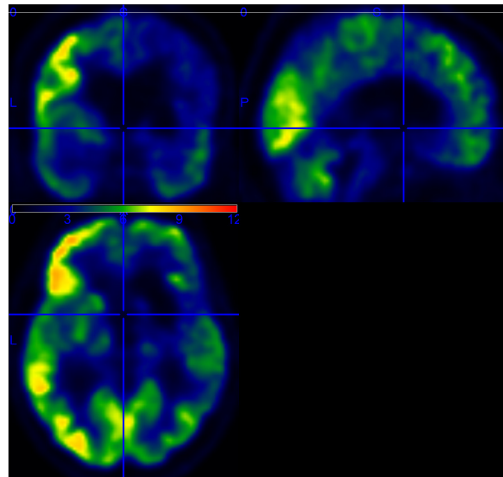


One patient (8%) with covert signs of command-following (>70%)
1/6 correct (and detected) answer for communication

Average SUV of patients
with MCS-like PET, no covert
command following



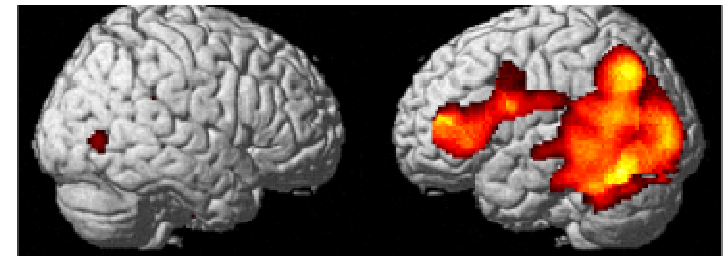
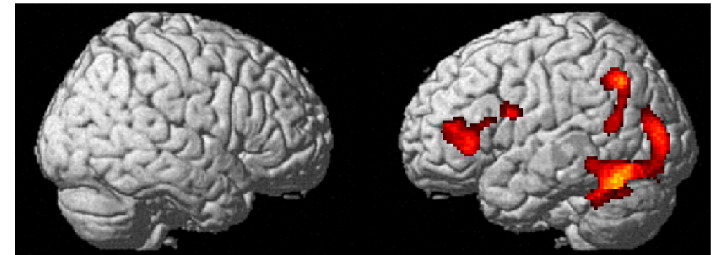
SUV of patient with signs of
covert command following



More preserved left language
network in patient with signs of
covert command following as
compared to patients with MCS-
like PET and healthy controls

Right hemisphere

Left hemisphere



- 1/12 UWS/MCS- patients showed covert signs of command following
- Neuroimaging can confirm BCI results & reduce false positives
→ Clinical perspectives
- Future studies:
 - Repeated BCI acquisitions
 - Test communication paradigms in more patients



Thank you



Studying Consciousness
in the electrical brain

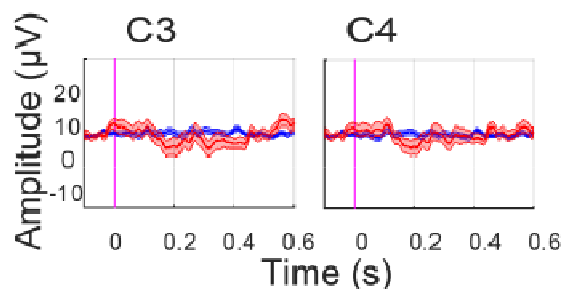
luminous



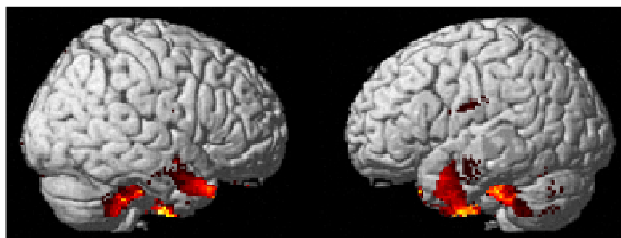


BCI accuracy UWS, PET UWS

Patient UWS 6

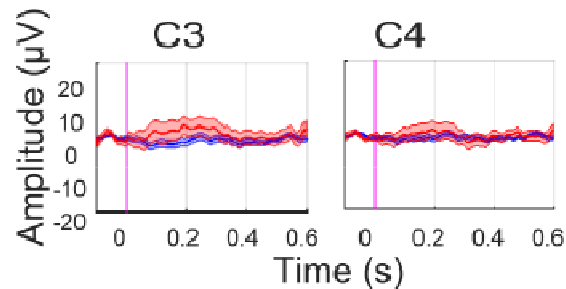


BCI VT2 accuracy: 0%

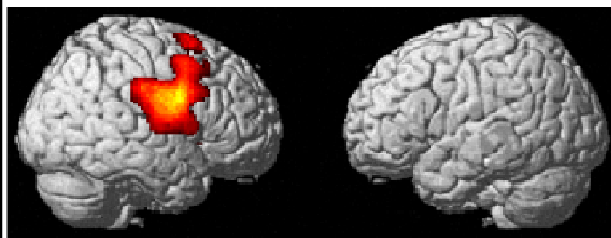


BCI accuracy UWS, PET MCS

Patient MCS- 2

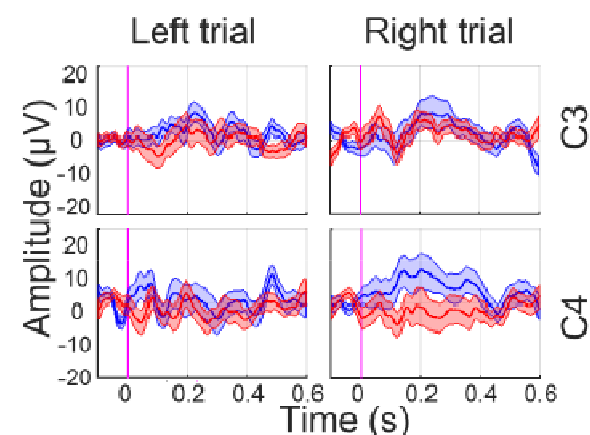


BCI VT2 accuracy: 20%



BCI accuracy MCS, PET MCS

Patient MCS- 1



BCI VT3 accuracy: 70%

