

Team X Legacy

Xavier Van Rooyen, Uliège

[Universitat Politècnica de València](#)

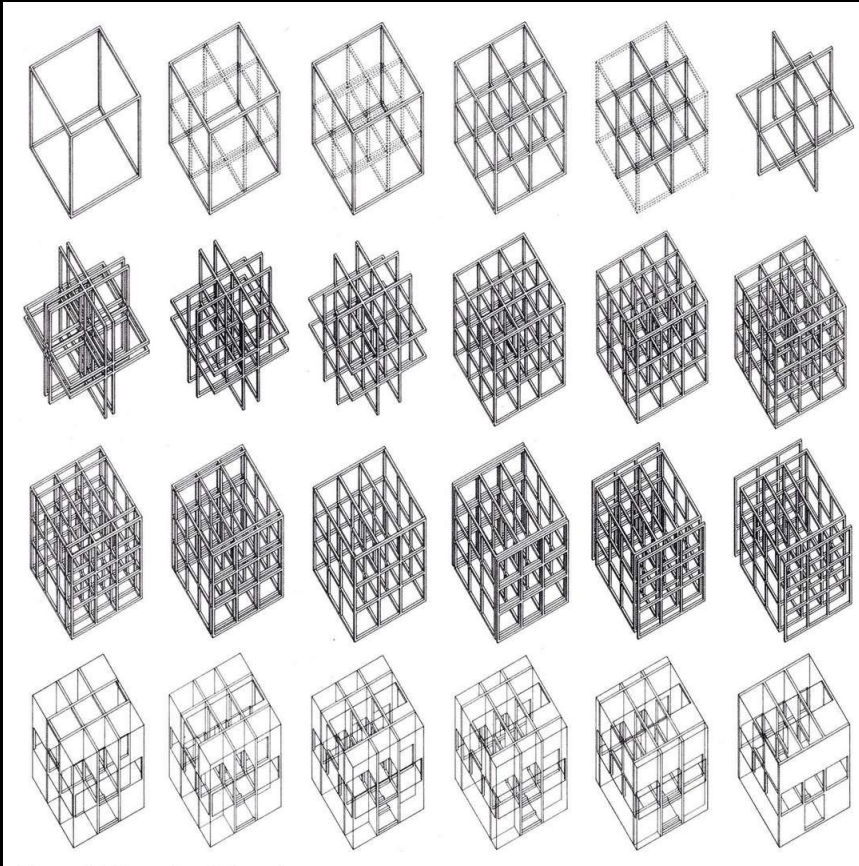
May 4th 2018

“

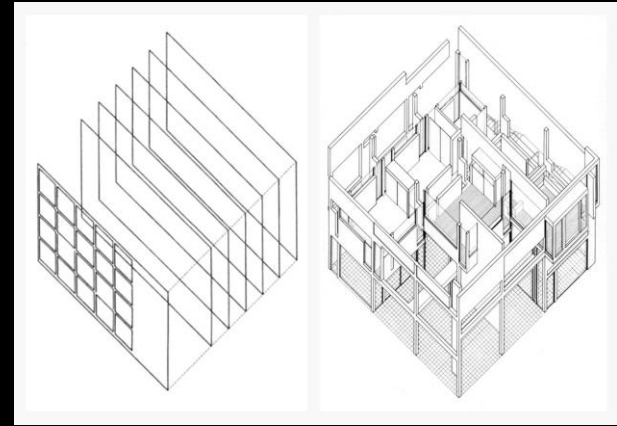
An abstract machine, in itself, is not physical or corporeal, not more than semiotic, it is diagrammatic... It operates by matter, not by substance; by function, not by form... The diagrammatic or abstract machine does not function to represent, even something real, but rather built a reality which is yet to come, a new type of reality

Gilles Deleuze, *Mille Plateaux*, Capitalisme et Schizophrénie 2 (Paris, 1980), 176-177

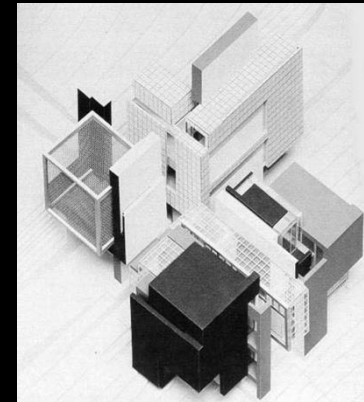
Diagrams of interiority and anteriority



Variations of diagram of interiority and anteriority



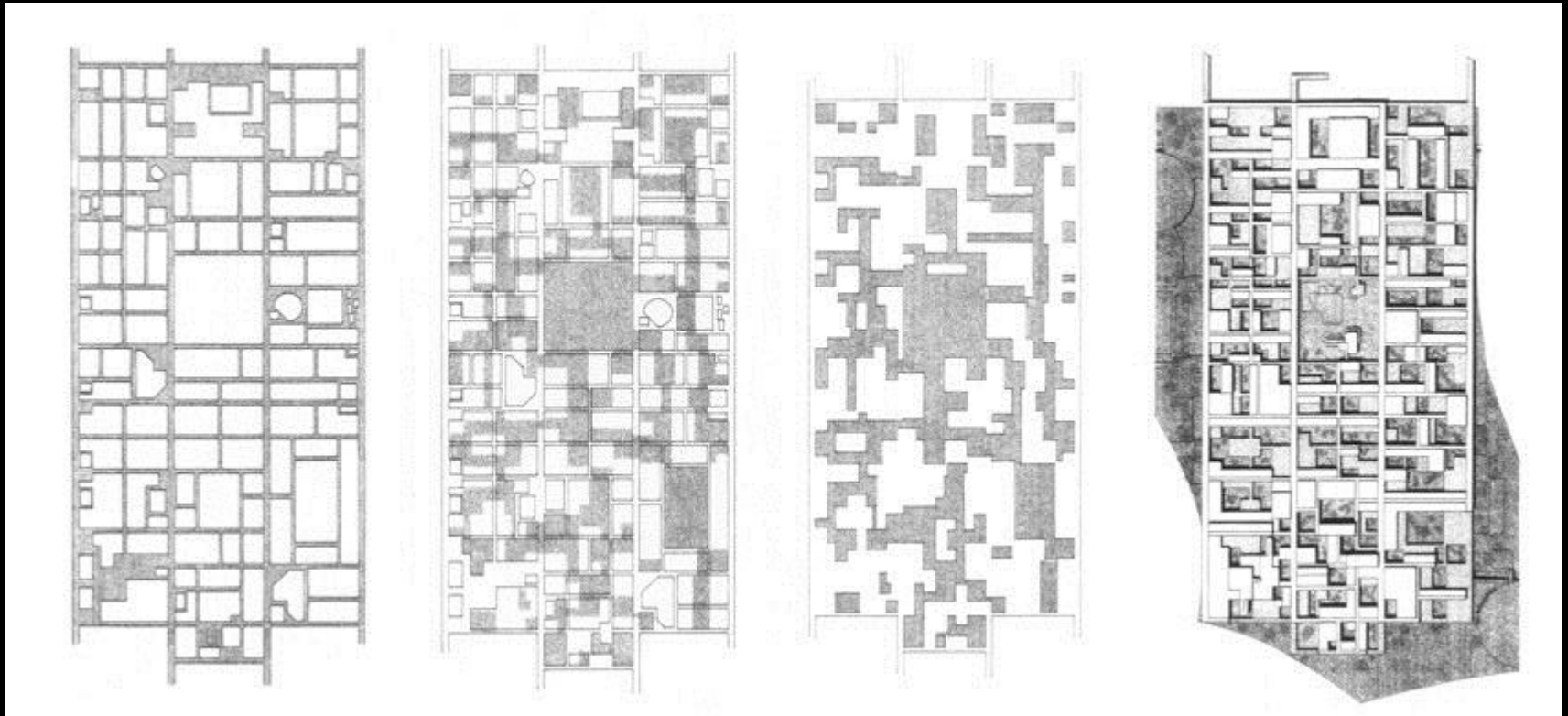
House II



House X

Casa Del Fascio analysis

Groundscraper or the mat-building diagram



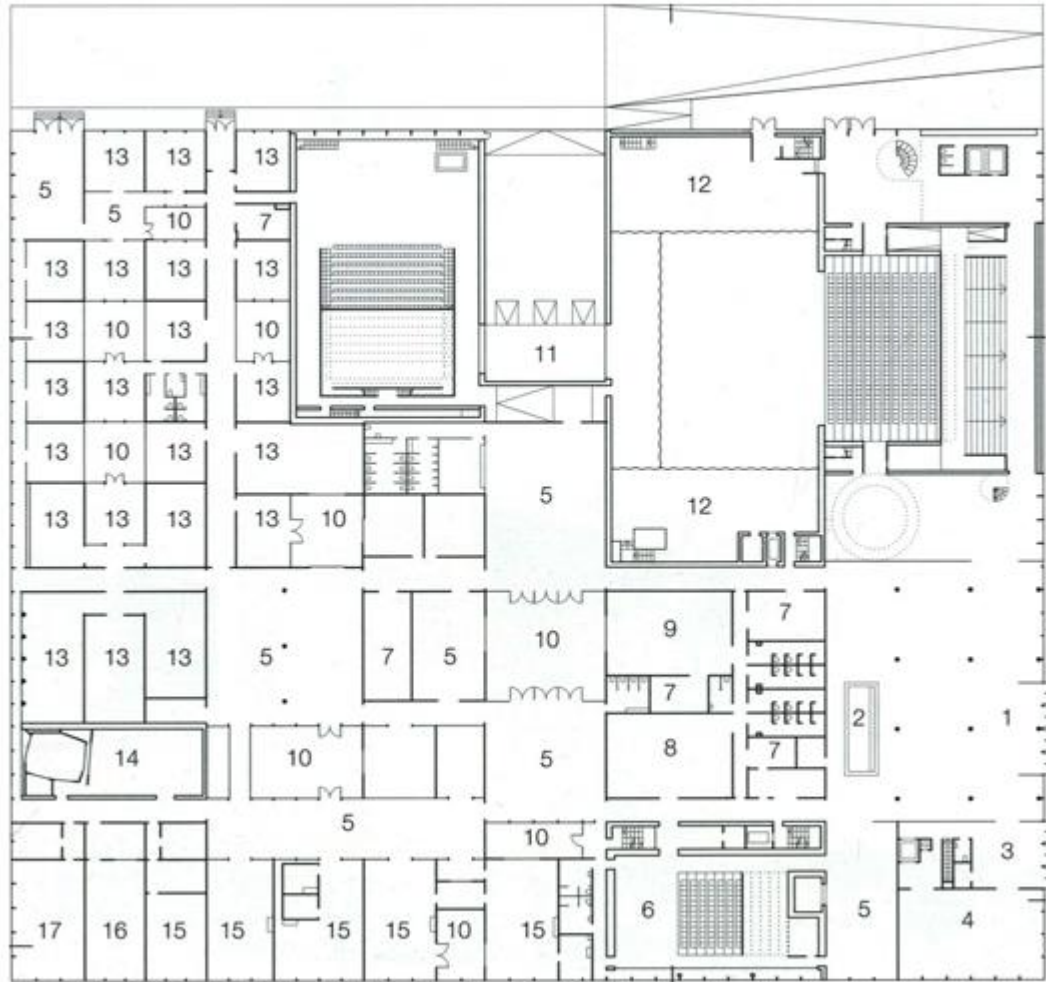
Grid structure - tracé

Espaces ouverts, flexibles , non-hierarchical and representatives of Urban Architecture

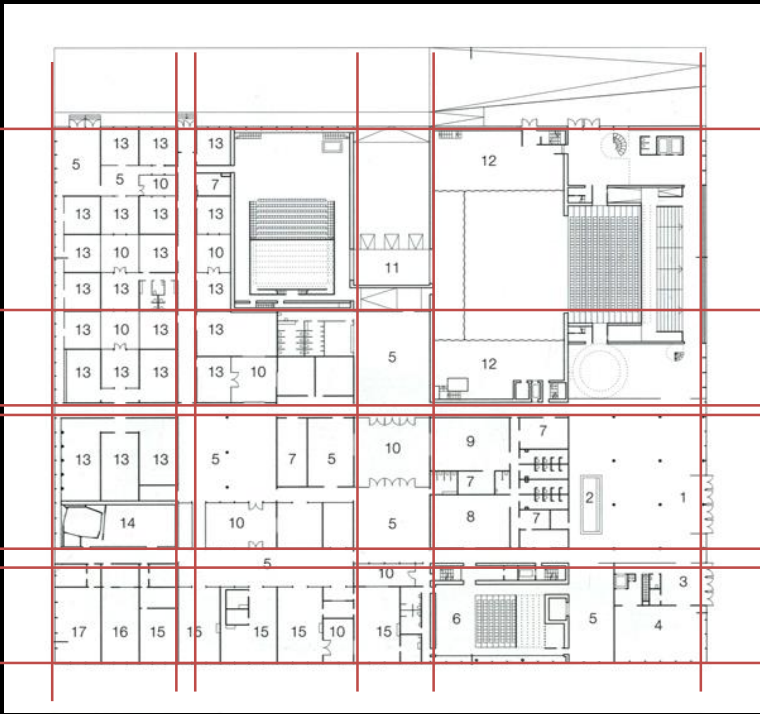
Georges Candilis, Alexis Josic and Shadrach Woods, Berlin Free University, 1964

Characteristics of a possible mat-building *machine abstraite*

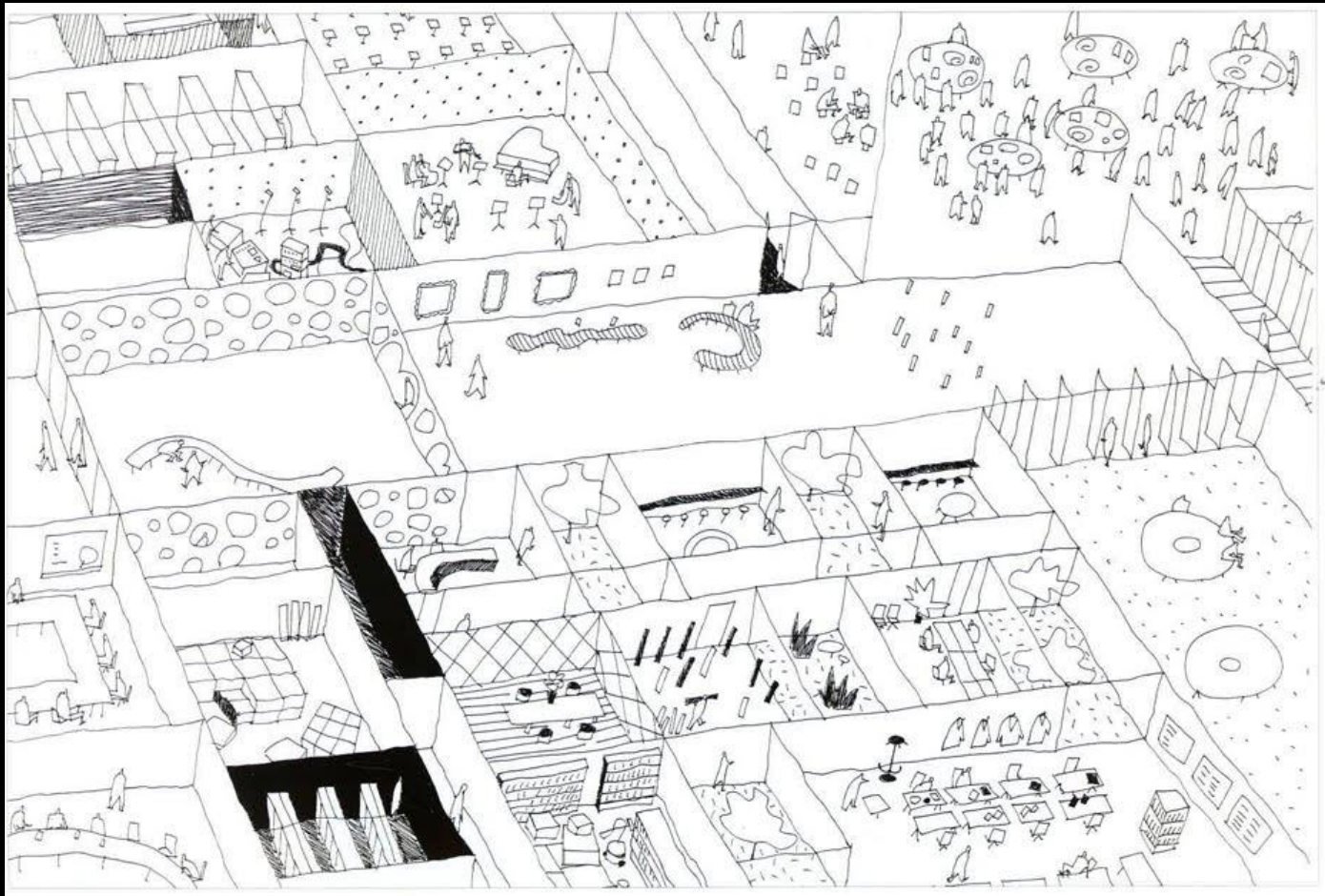
- a *tracé*; a grid diagram
- the possibility of flexible appropriation of use, organising a programmatic indeterminacy
- the urban-like architecture.



Sanaa, Stadstheater, Almere, 2000-2006

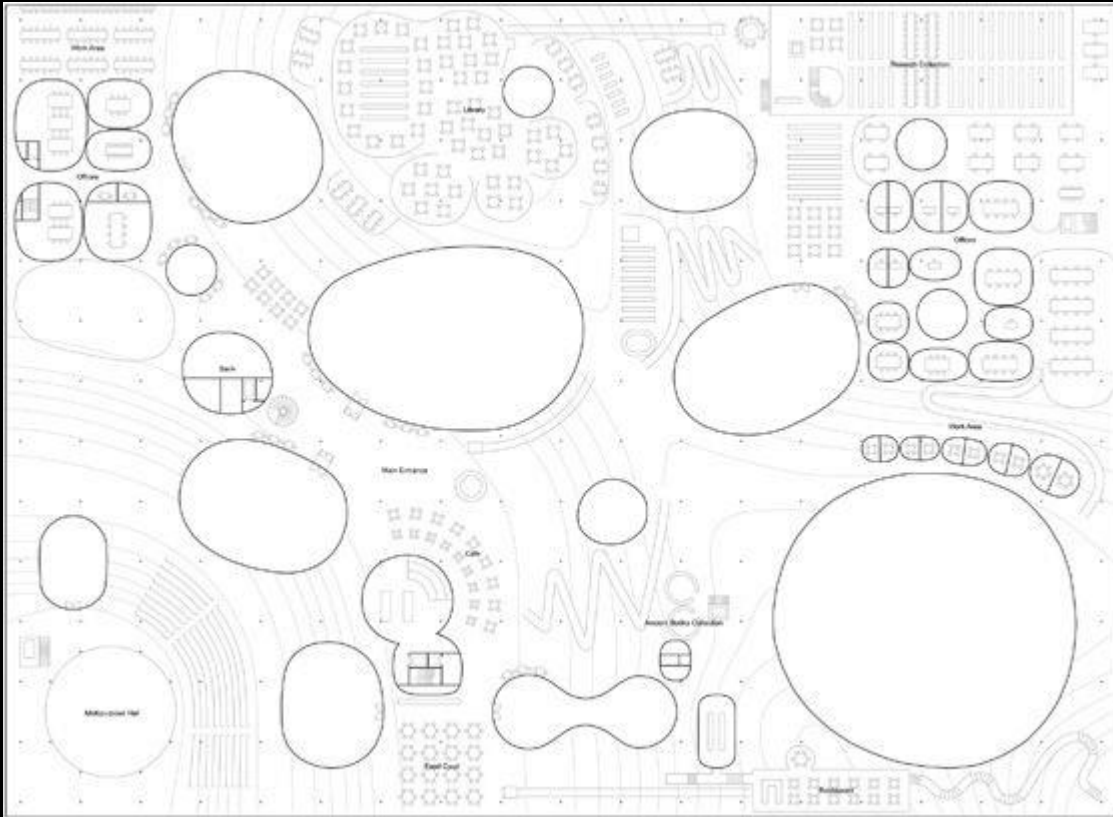


Sanaa, Stadstheater, Almere, 2000-2006



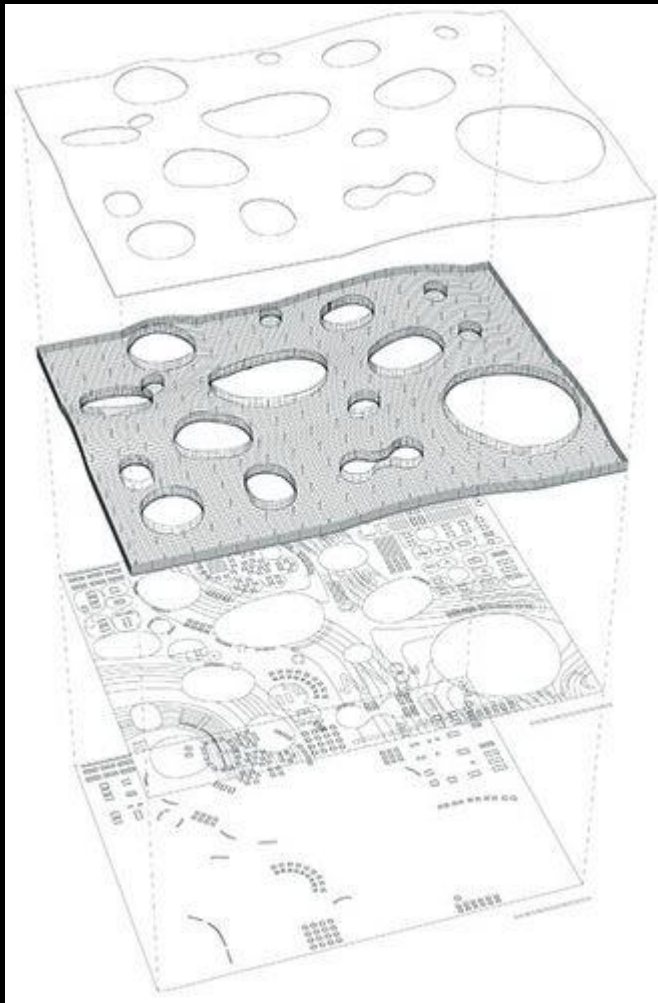
Nishizawa, flexible appropriations and park-like metaphor

Sanaa, Stadstheater, Almere, 2000-2006



Plan of Rolex Learning Center

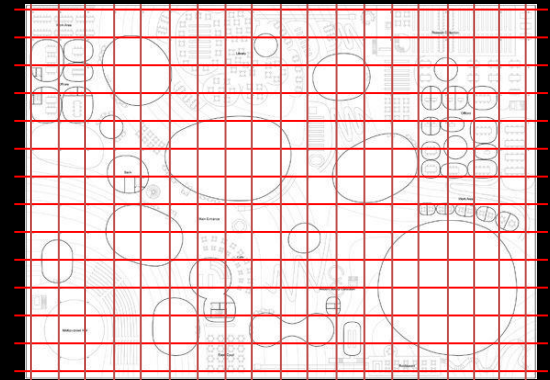
Sanaa, Rolex Learning Center, Lausanne, 2004



Landscape -like space

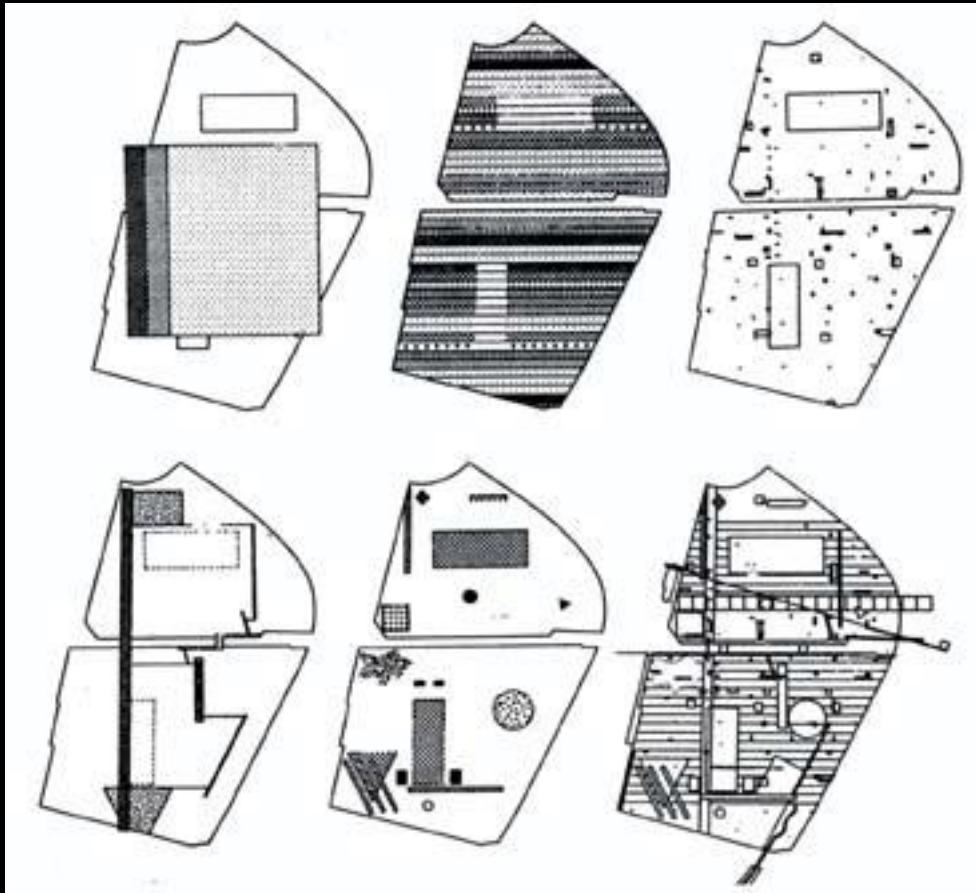
Grid structure - tracé

Flexibility of the plan

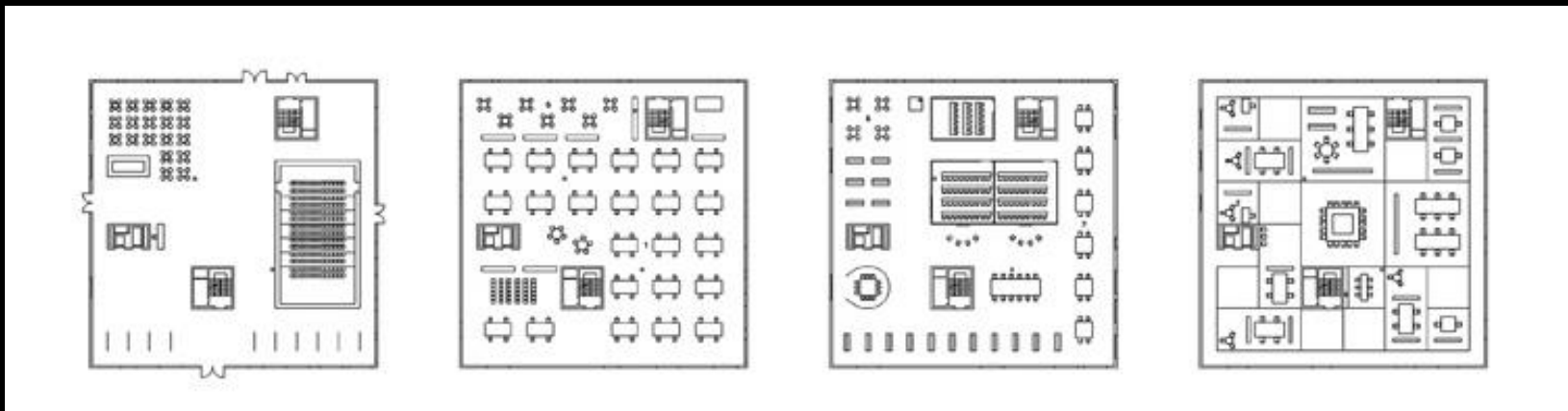
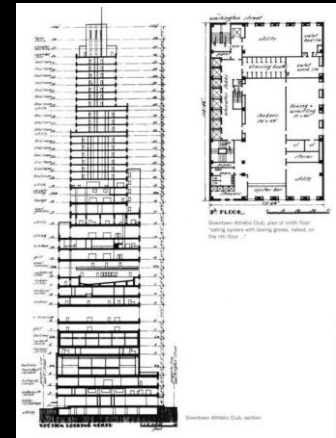
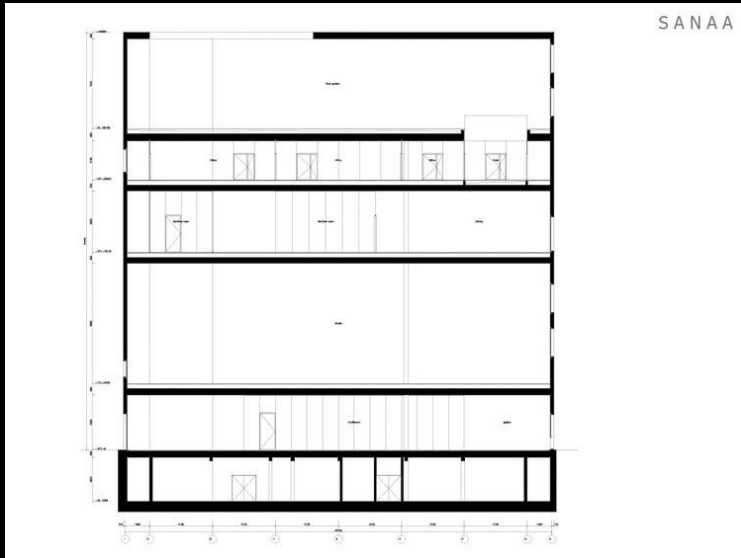


Sanaa, Rolex Learning Center, Lausanne, 2004

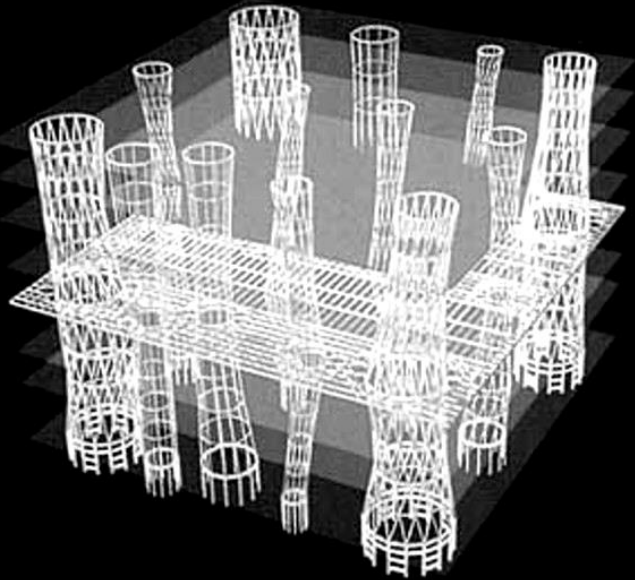
Indeterminacy and the skyscraper diagram



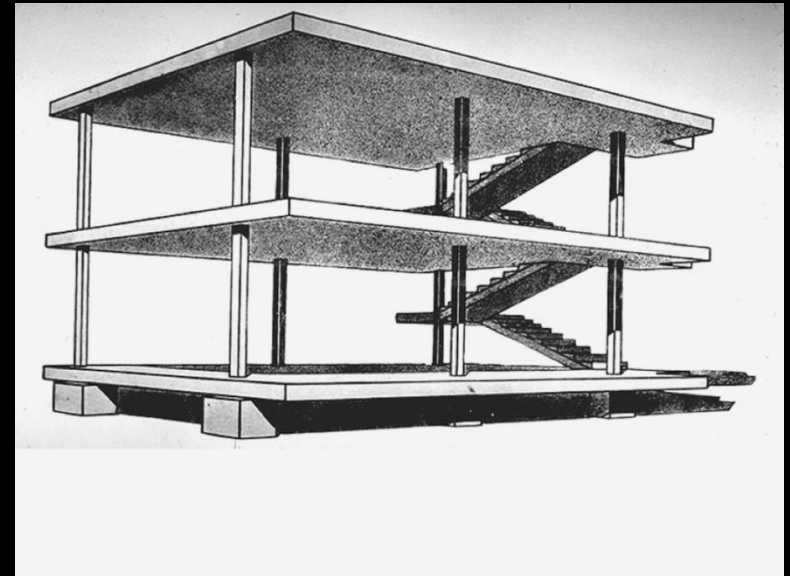
OMA, Parc de la Villette, Paris, Competition entry diagrams, 1982



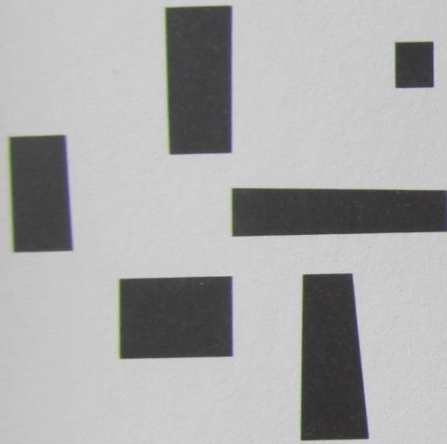
Sanaa, Zollverein school of management and design, Essen, 2004



Toyo Ito, Sendai Mediatheque, 1995-2001



Le Corbusier, Système DOM-INO, 1914



COMPOSITIONAL FORM



MEGAFORM



GROUP FORM

Fumihiko Maki, 1964

The Group-form diagrams



seidai hospital 1998



Jomon House, long ago



aomori museum 2000



Goldberg Variations
J.S. Bach 1742



m-hospital day care house 2000



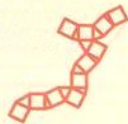
n house 2001



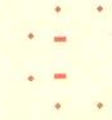
Cathédrale Chartres 1250



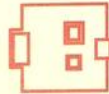
seidai hospital work house 1996



m-hospital group home 2003



New National Gallery, Berlin
Mies van der Rohe 1968



Horyuji Temple



tomihiro museum 2002



Comlongan Castle, Scotland



ora 2002



Colosseum, Roma 80



m-hospital work house 2003



m-hospital day care house 2003



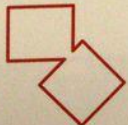
j-project 2003



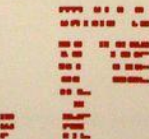
Villa Sarabhai
le Corbusier 1955



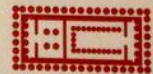
n house 2001



Fisher House, Louis I. Kahn 1967



m-hospital 1997

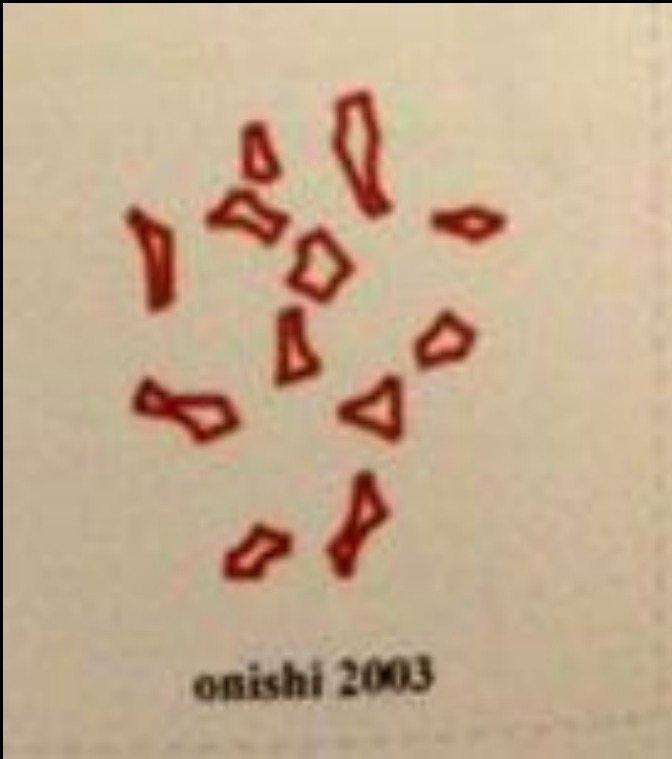


Parthenon B.C.450



onishi 2003

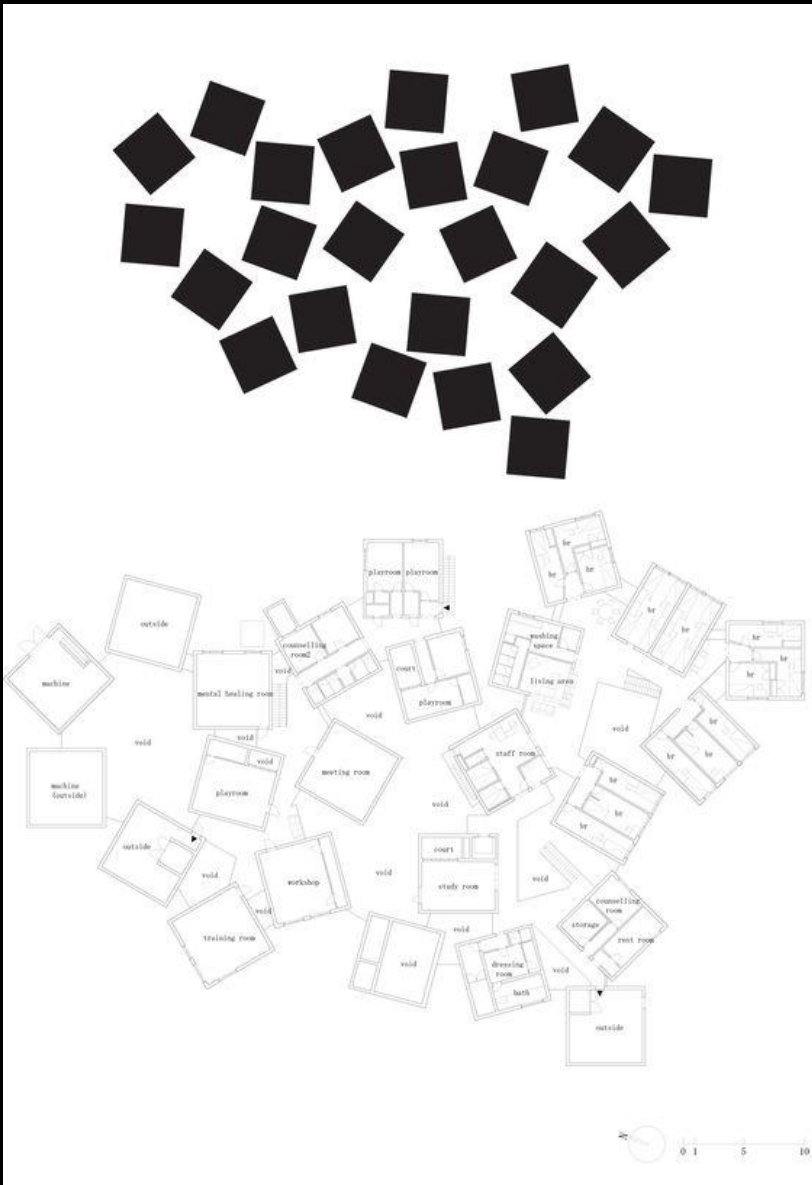
LA IMPORTANCIA DE LOS DIAGRAMAS: El Mandala de Sou Fujimoto
SIGNIFICANCIA DE LOS DIAGRAMAS: Sou Fujimoto-Mandala



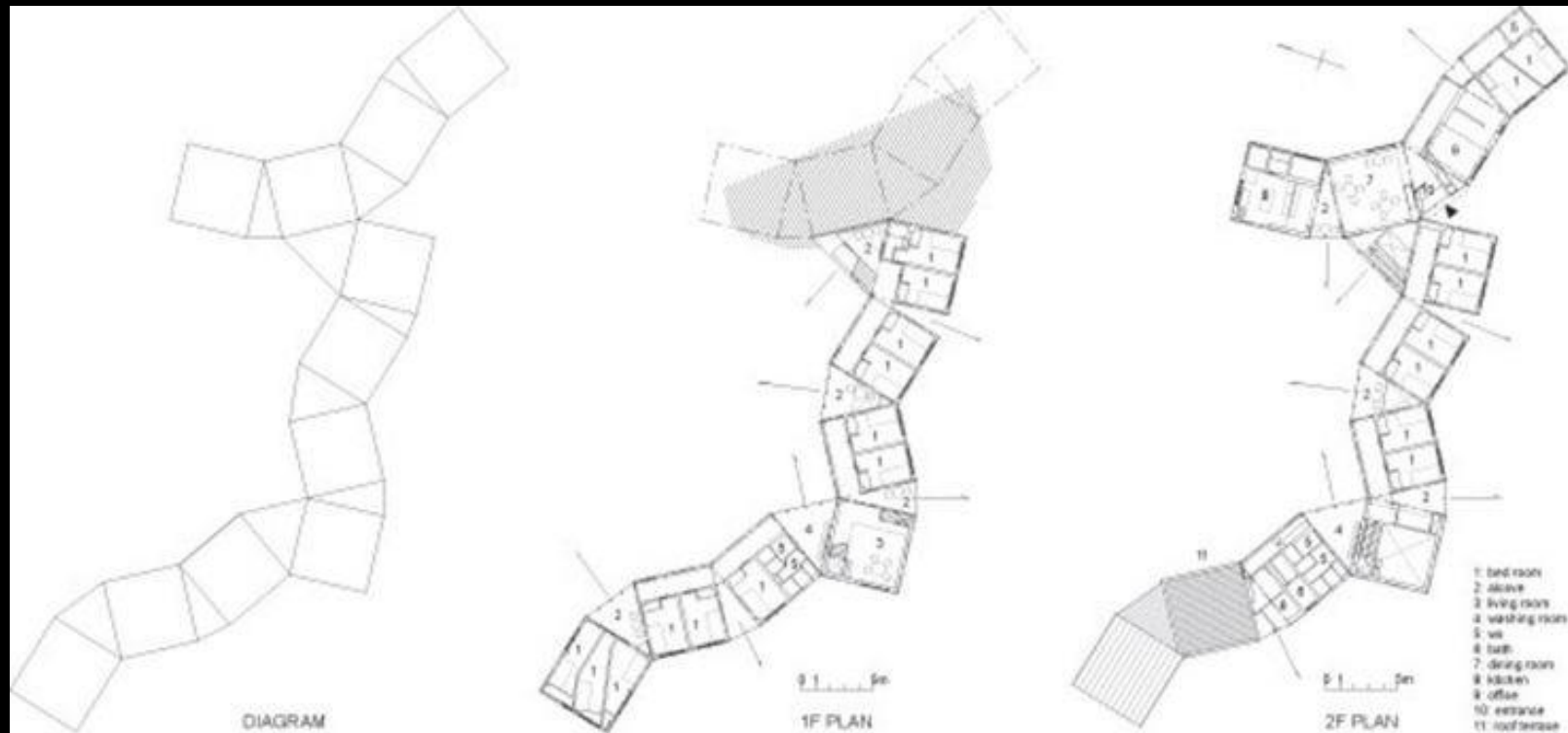
Sou Fujimoto Onishi diagram



Maki, Group Form diagram



Sou Fujimoto , Children's centre for psychiatric rehabilitation



Sou Fujimoto , Residential care unit, Hokaido, 2006

Conclusion