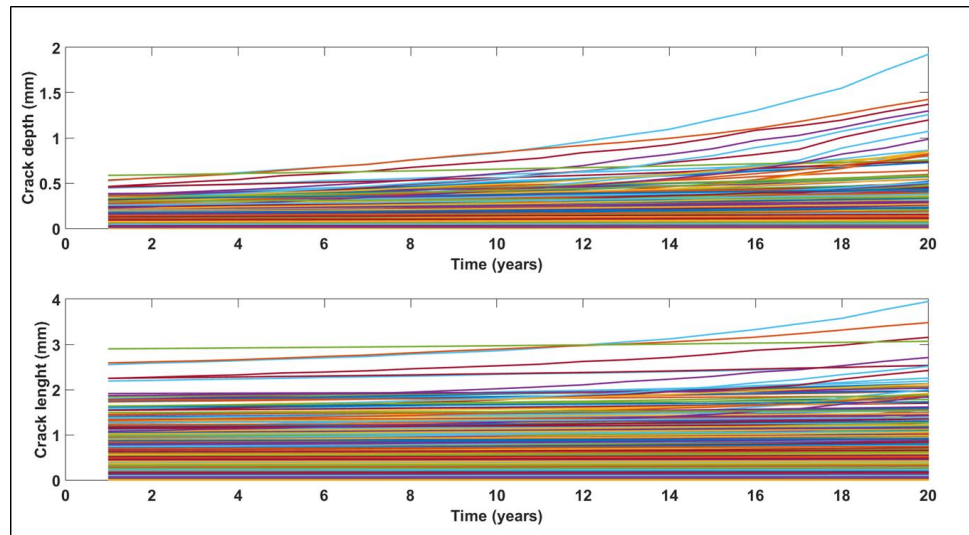
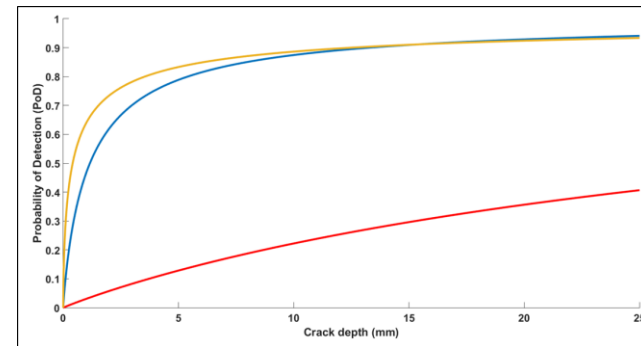


Risk-Based Maintenance Optimization of Offshore Wind Substructures

Probabilistic Fracture Mechanics Model



Inspection Model



Different inspection
techniques

- Ultrasonic Testing
- Eddy current
- Visual Inspection

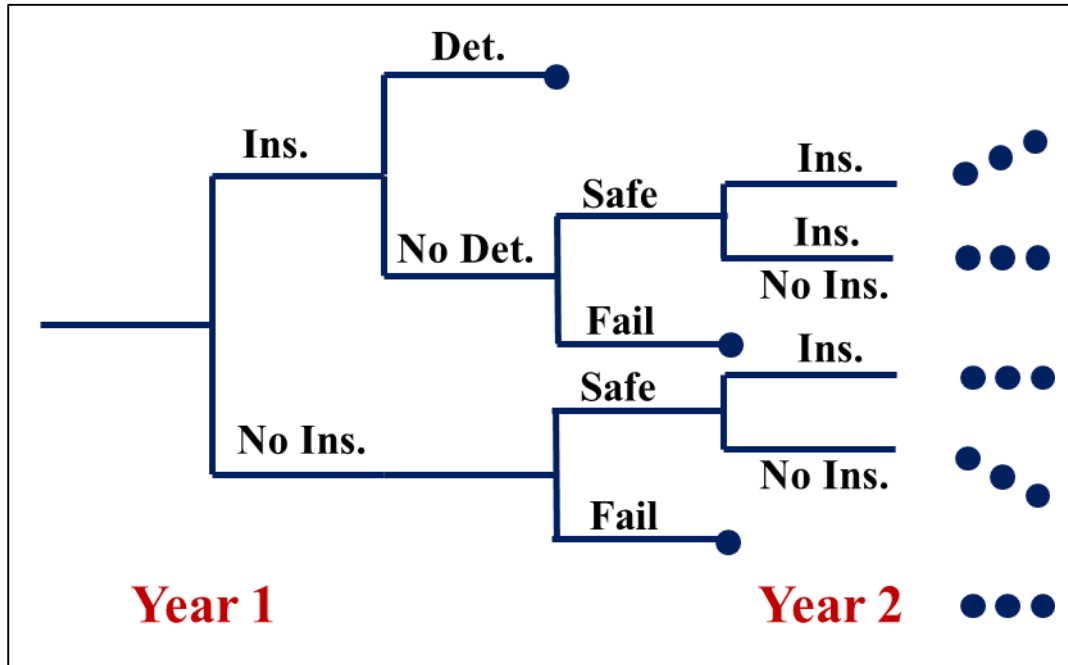
Cost Model

- Failure Cost
- Repair Cost
- Inspection Cost

Decision support under uncertainty

Before -----> Now

Traditional RBI Methods



Limitations: eg. “Equidistant inspections”

“Partially-Observable MDP”

