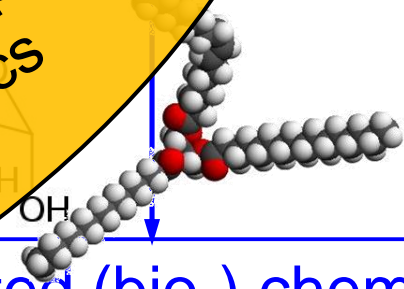
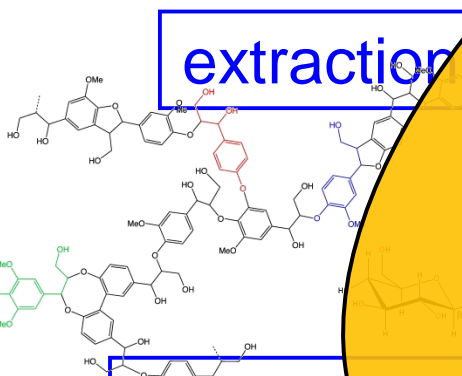
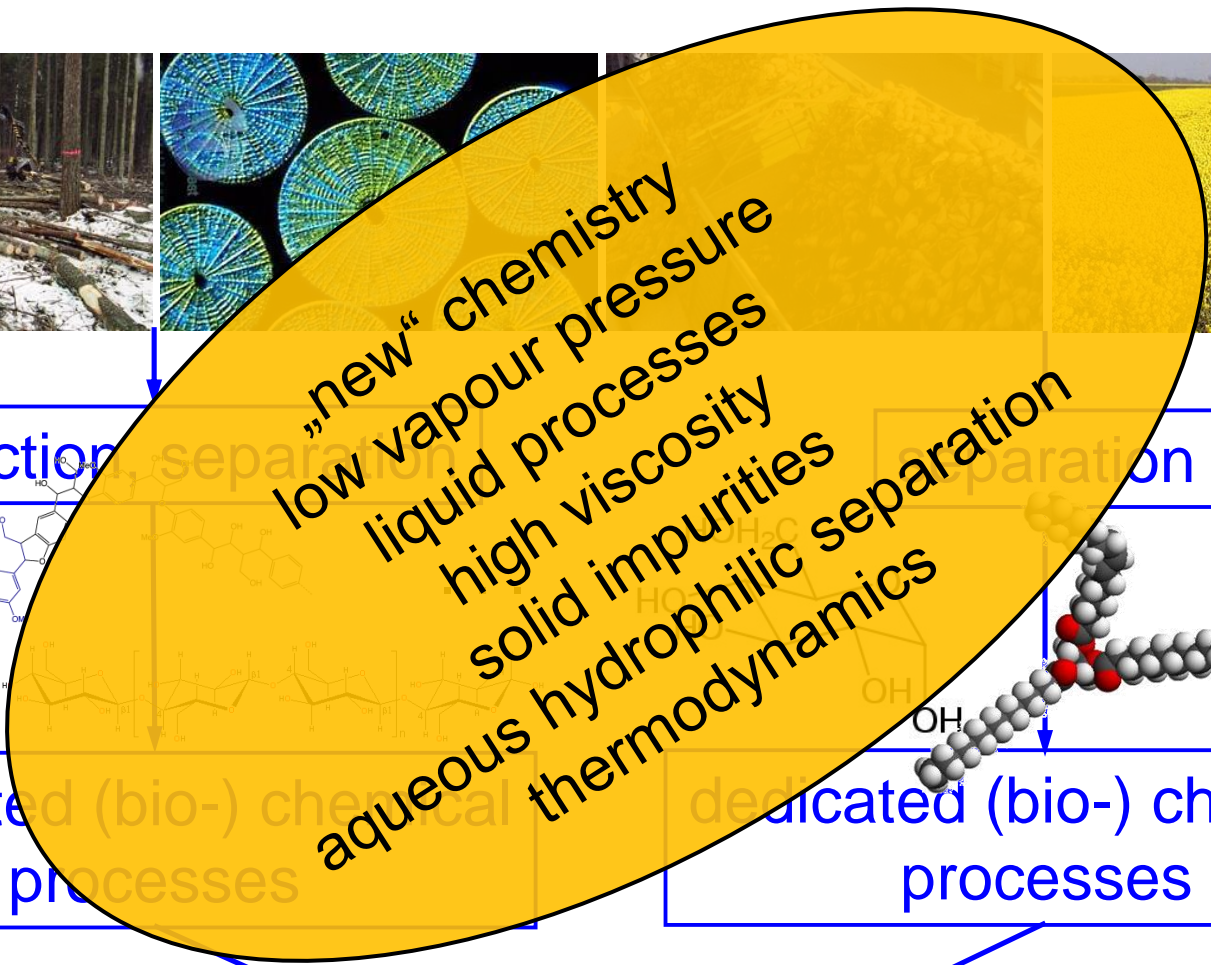

Phoenix Project: Introduction

David Leleu, Andreas Pfennig
dleleu@uliege.be, andreas.pfennig@uliege.be
Products, Environment, and Processes (PEPs)
Department of Chemical Engineering
Université de Liège (Belgium)
www.chemeng.uliege.be



biomass as feedstock



dedicated (bio-) chemical processes

dedicated (bio-) chemical processes

new products
strongly functionalized

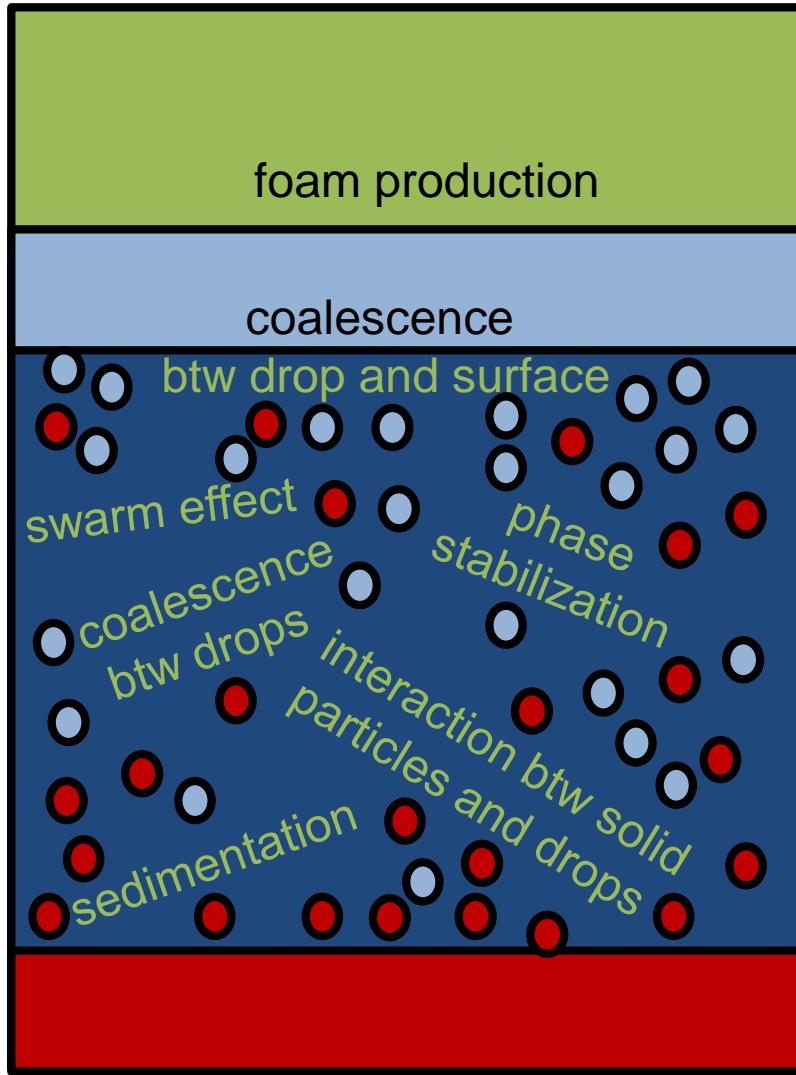
gravity settler



gravity settler



multiple interactions



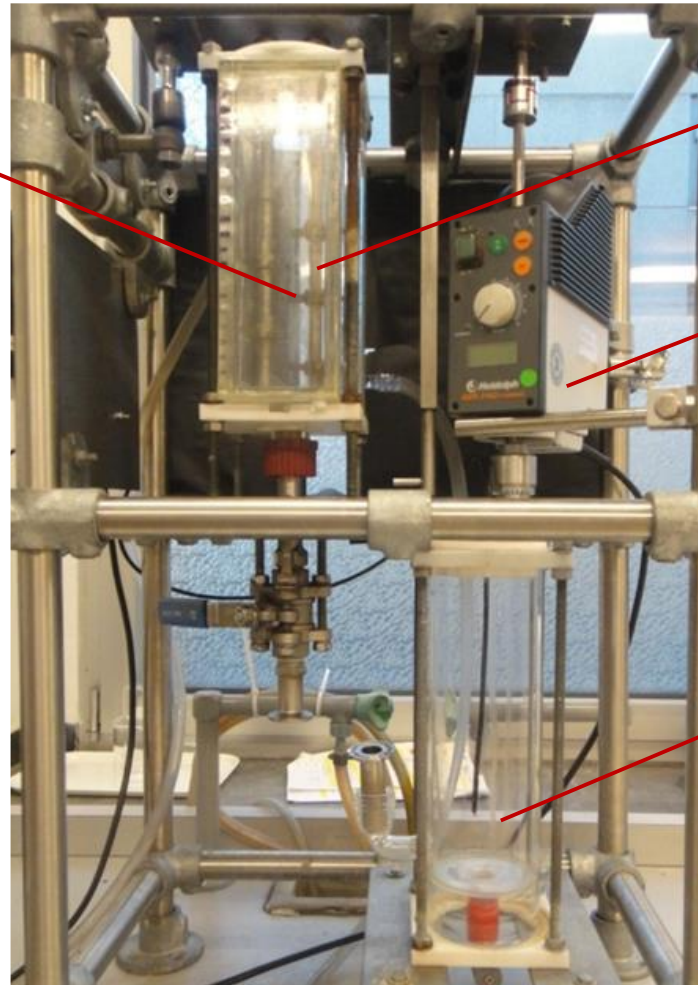
prediction of
multiple phenomena



design of technical
equipment

stirring cell

double-wall
glass vessel



2 counter-rotating
shafts

engine

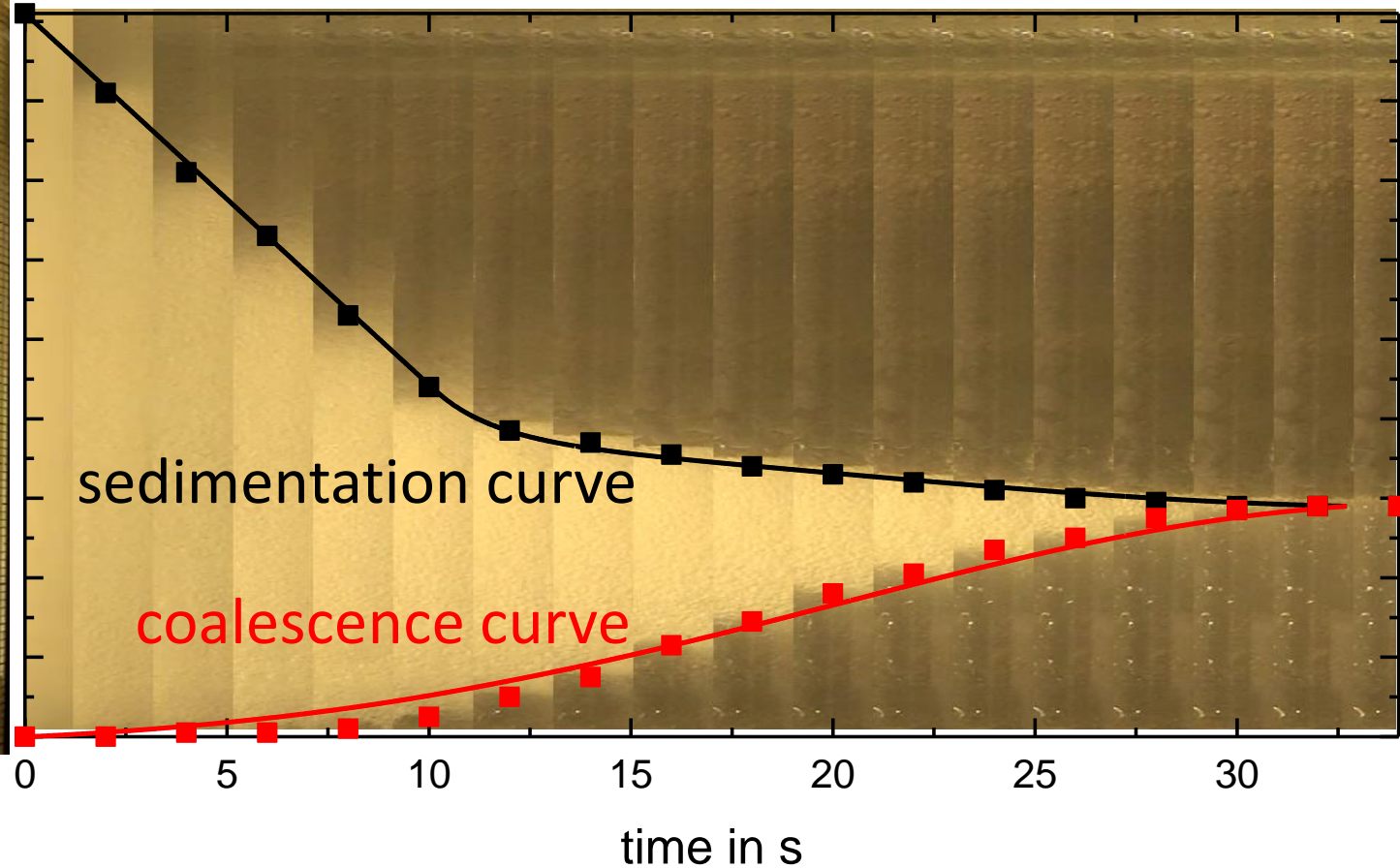
second vessel
for internals

stirring settling cell

Henschke, Chem Eng. J., 2002

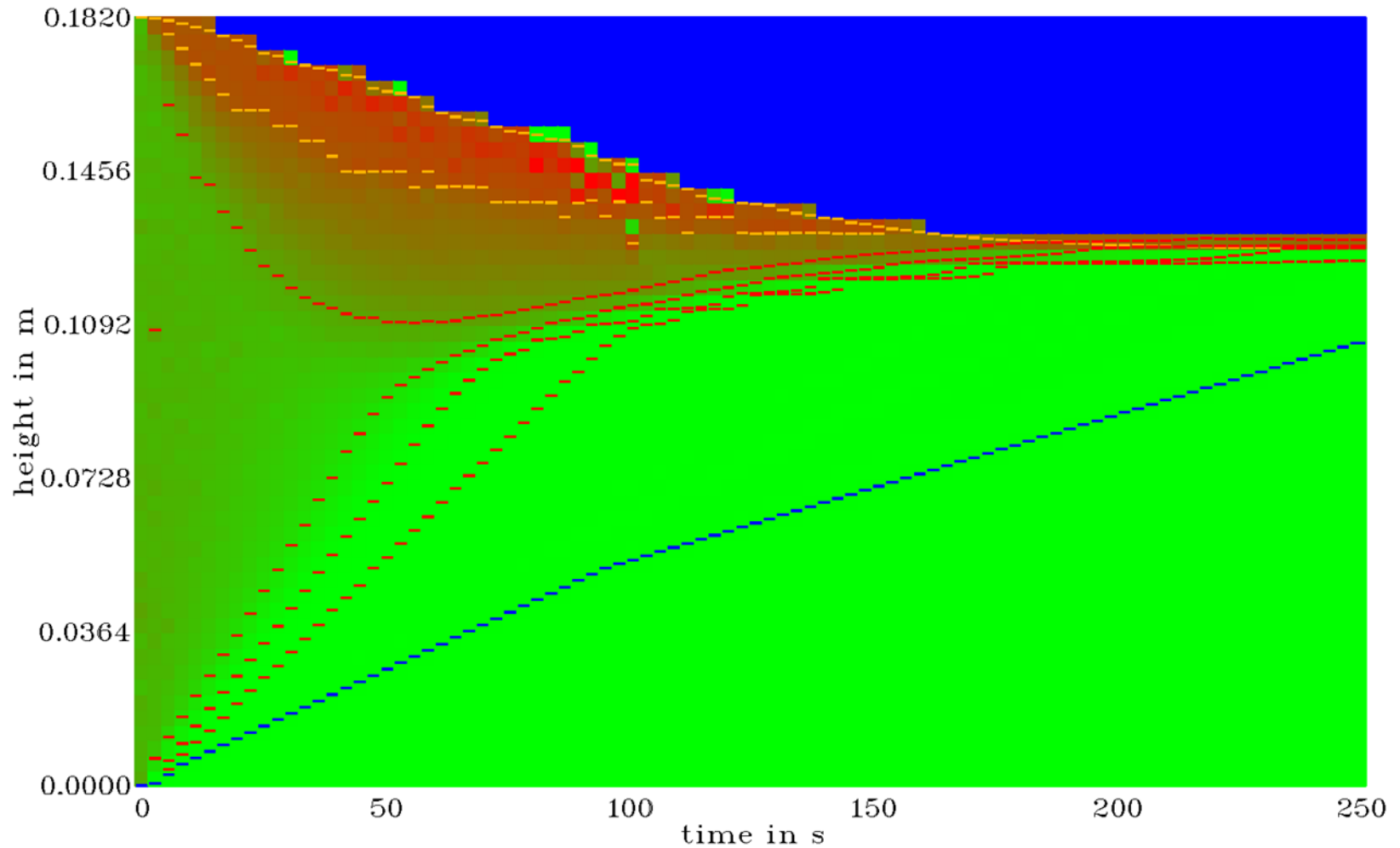
Confidential

stirring-cell experiment

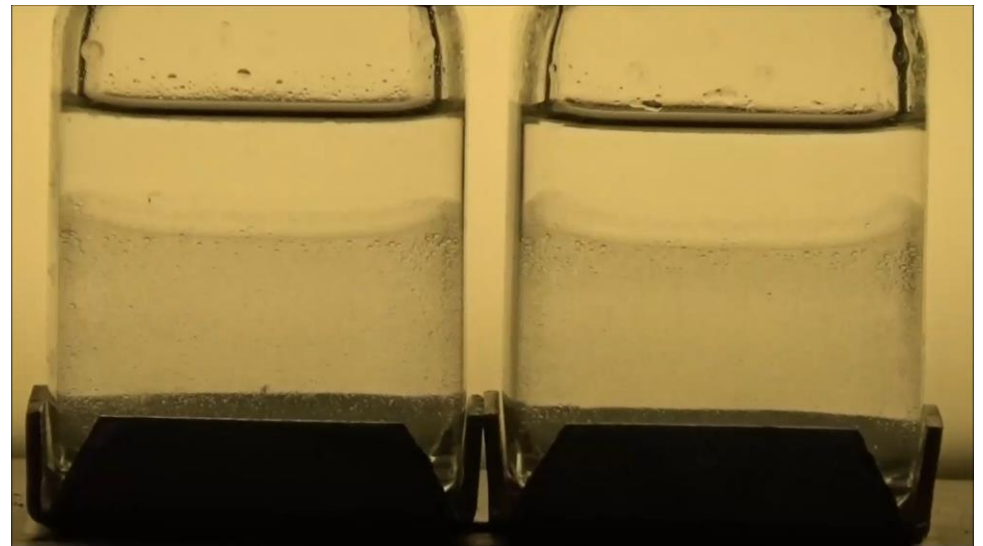


ReDrop program

holdup profile



calibration device



Phoenix project (Horizon 2020)



anaerobic digestion

pyrolysis

hydrothermal carbonization

fermentation

...

Phoenix Project: Introduction

David Leleu, Andreas Pfennig
dleleu@uliege.be, andreas.pfennig@uliege.be
Products, Environment, and Processes (PEPs)
Department of Chemical Engineering
Université de Liège (Belgium)
www.chemeng.uliege.be

