



Une jeunesse innovante pour un avenir commun

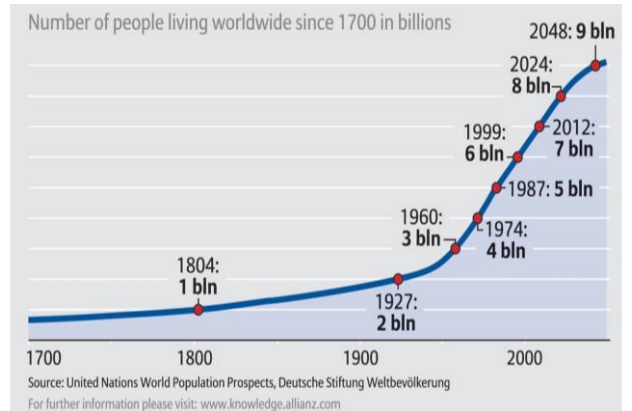
Pierre Ozer



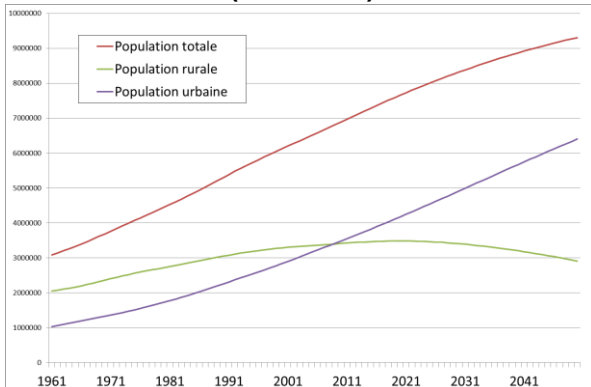
The Hugo Observatory
Environment, Migration, Politics

HERA Awards, Université de Liège, 25 avril 2017

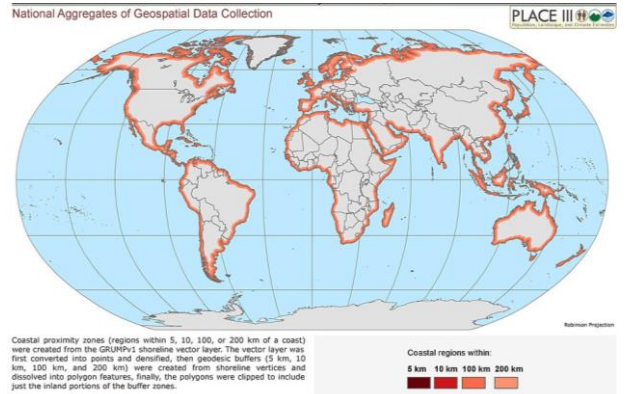
Human population of the Earth



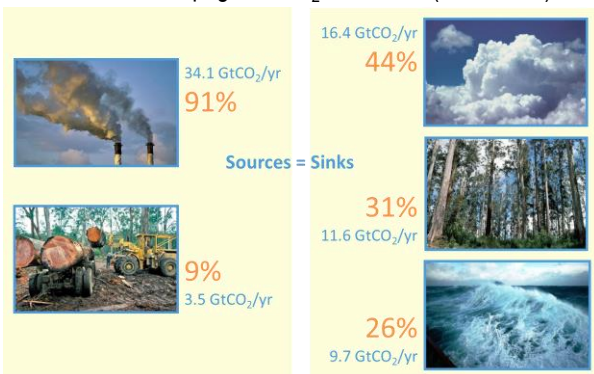
World population (1961-2015) and projections (2016-2050)



48% of the world population lives within 200 km of the coast

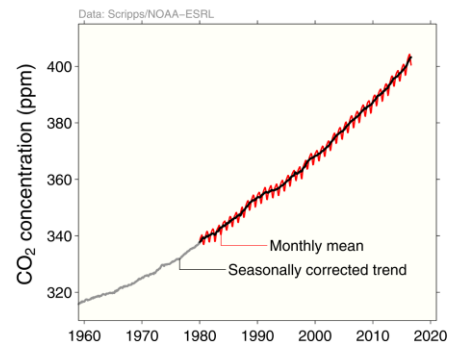


Fate of anthropogenic CO₂ emissions (2006-2015)

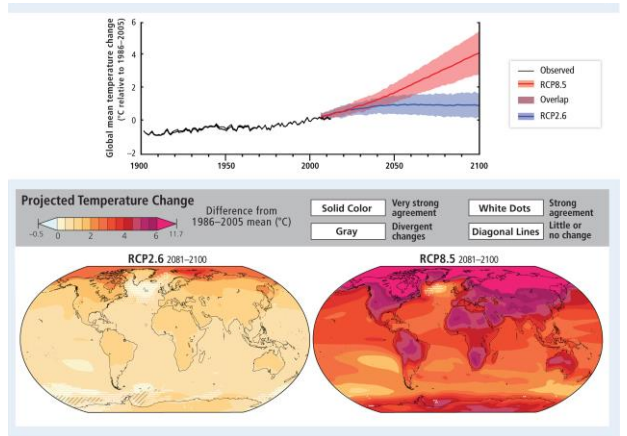
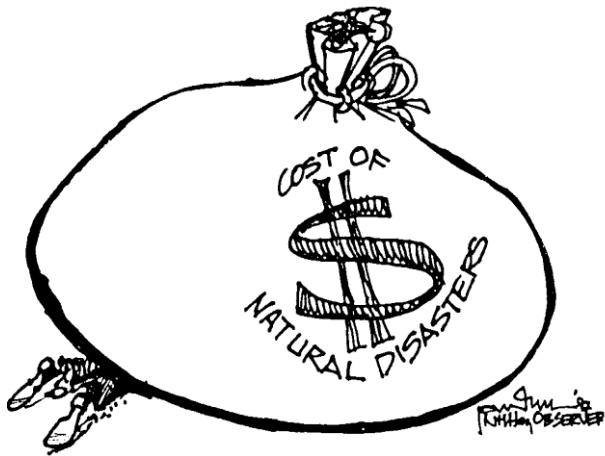
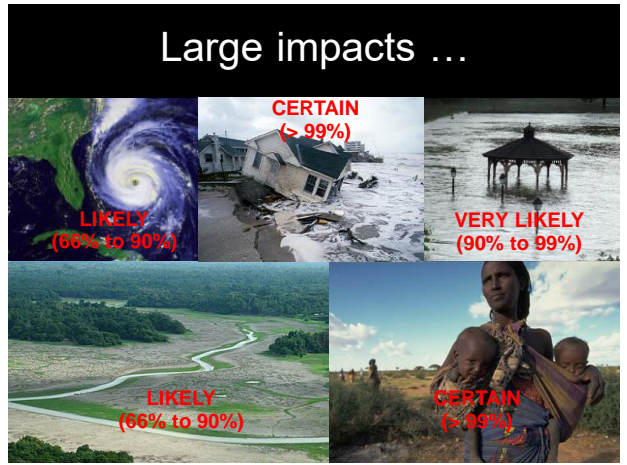
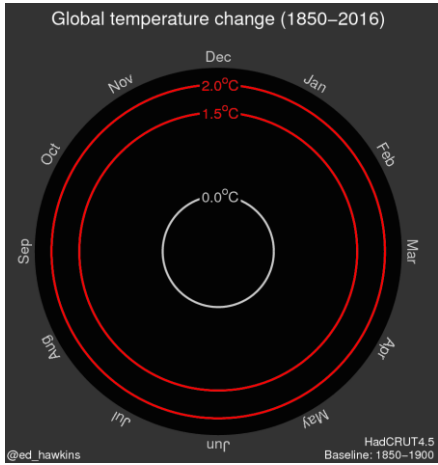


Global Carbon Project 2016

Atmospheric concentration

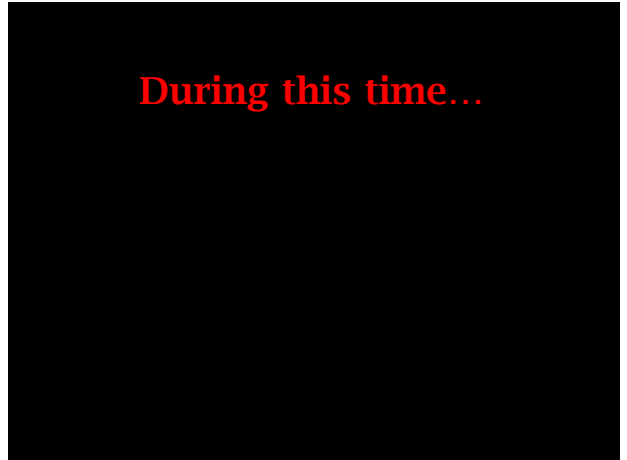
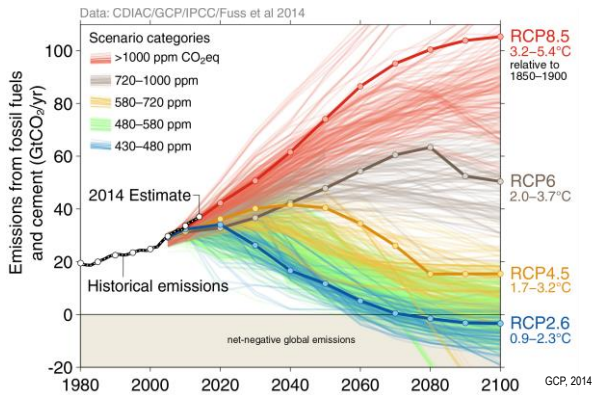


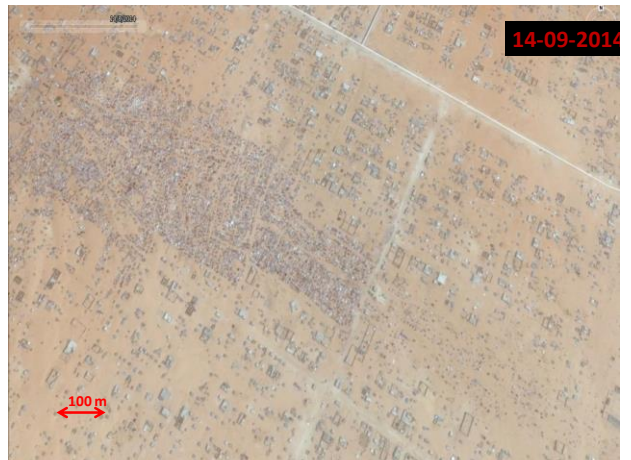
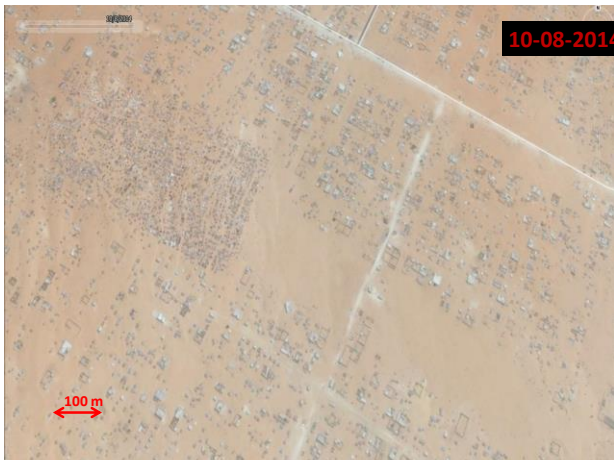
Global Carbon Project 2016

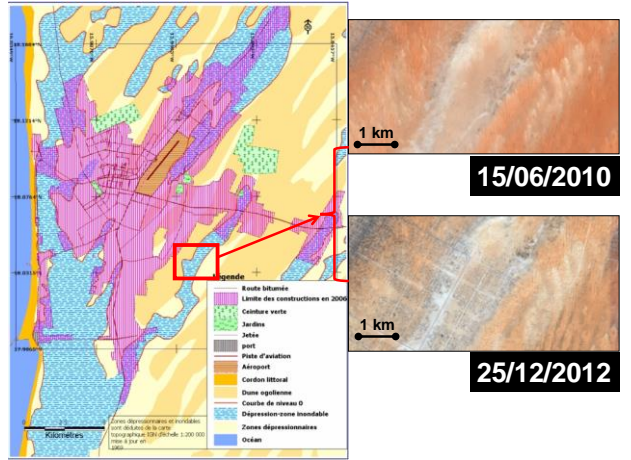
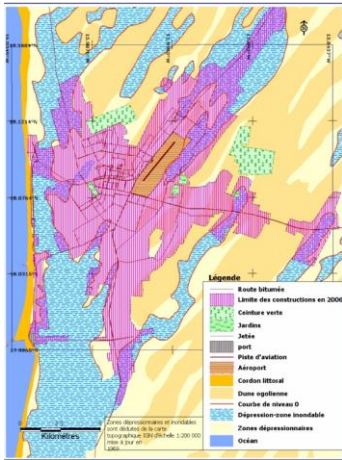


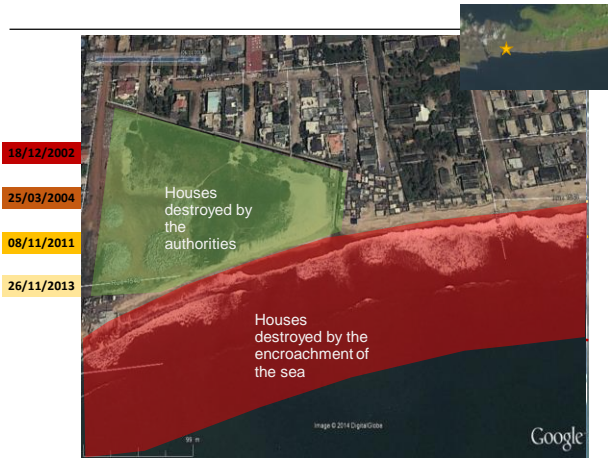
Source: AR5 WGII GIEC 2014

Fossil fuel CO₂ emissions vs IPCC scenarios
Emissions are heading to a 3.2-5.4°C "likely" increase in temperature

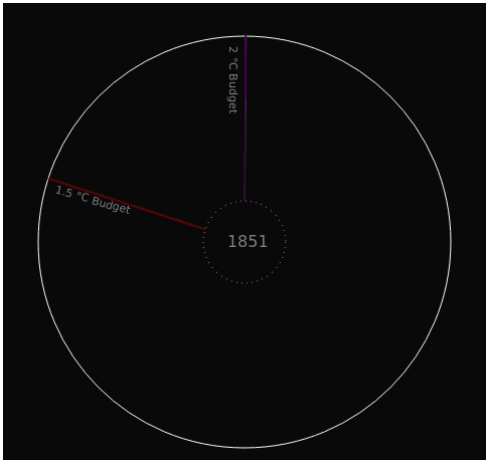




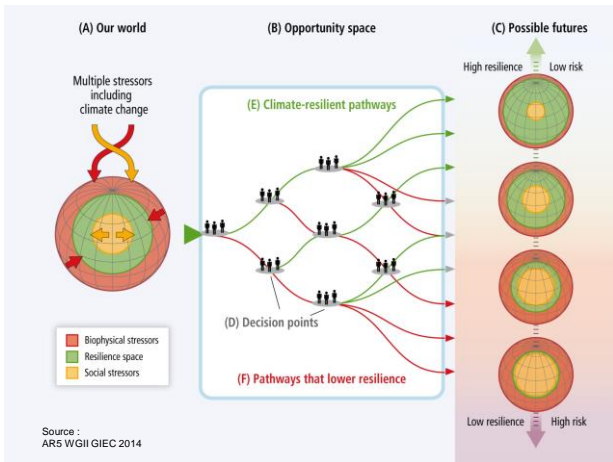
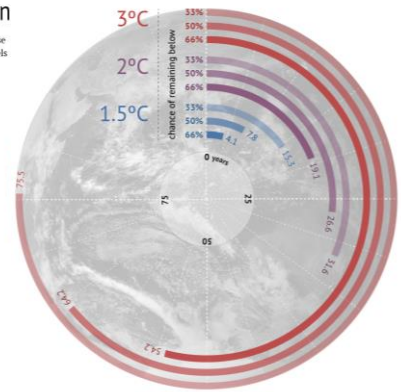




At the end...



Carbon Countdown
How many years of current emissions would use up the IPCC's carbon budgets for different levels of warming?



Pierre Ozer
pozer@ulg.ac.be
<http://labos.ulg.ac.be/hugo>



The Hugo Observatory
 Environment, Migration, Politics