

# Intrinsic functional connectivity changes along the spectrum of consciousness

Instituto de Neurobiologia  
Campus Juriquilla UNAM

April 22 2016  
Querétaro, Mexico

**Athena Demertzi, PhD**  
**Institut du Cerveau et de la Moelle épinière – ICM**  
**Paris, France**  
&  
**Coma Science Group**  
**GIGA Research & Neurology Department**  
**University & University Hospital of Liège, Belgium**



James S. McDonnell Foundation



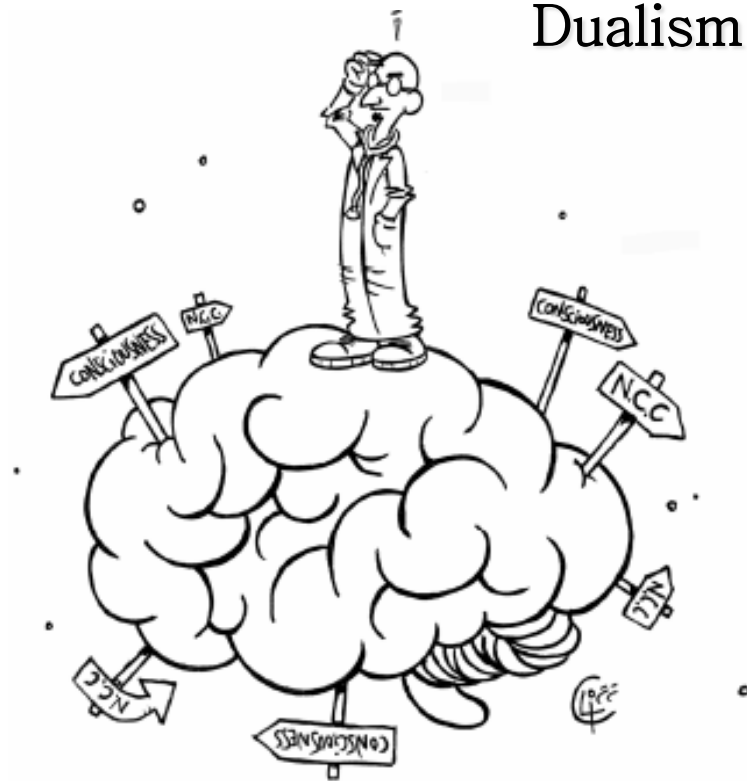
[www.comascience.org](http://www.comascience.org)

# Consciousness

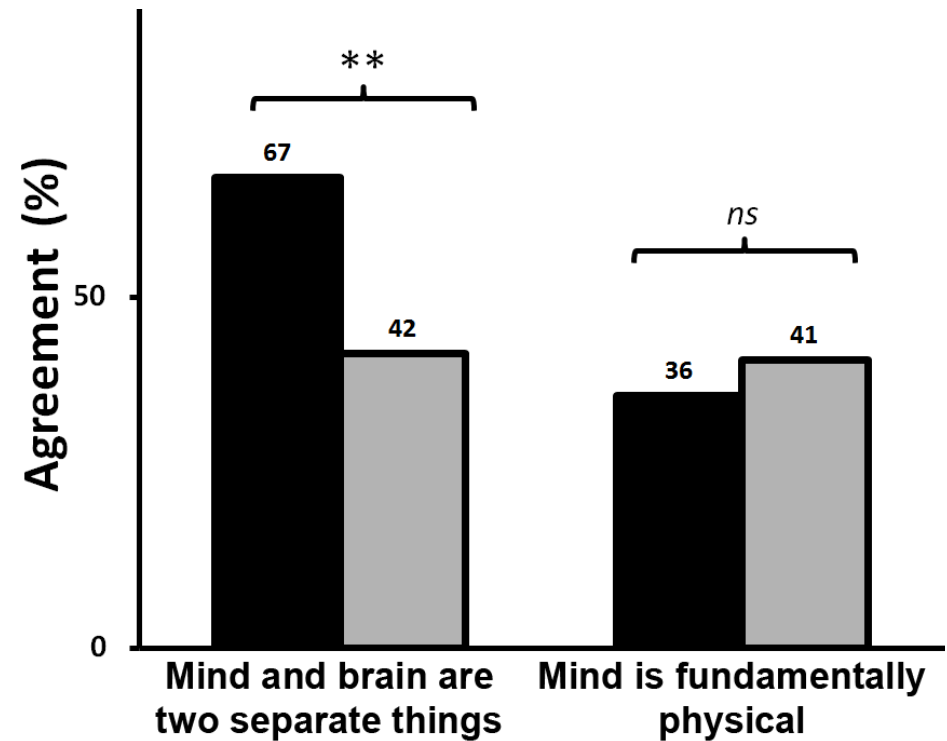
Functionalism

Materialism

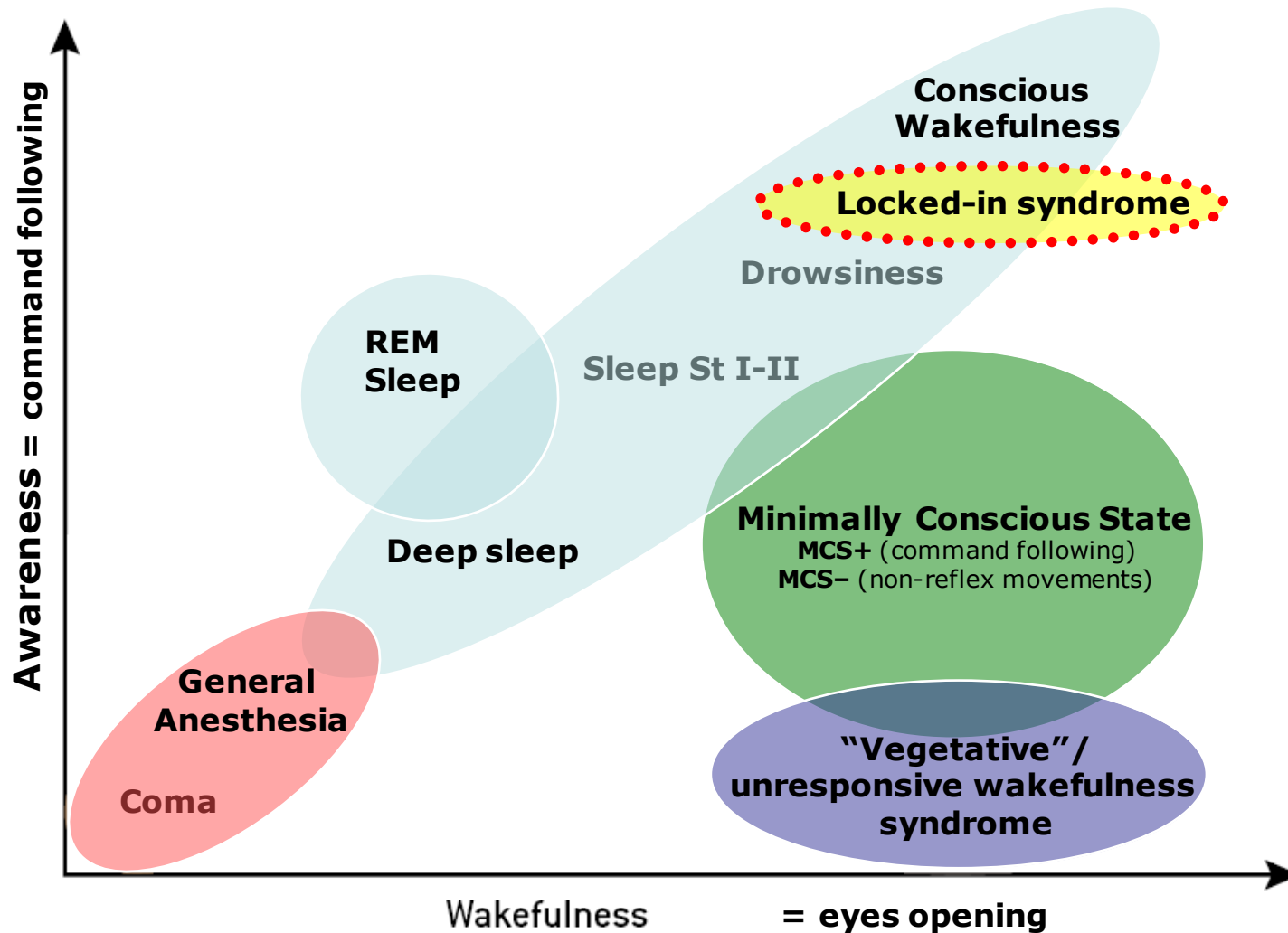
Dualism



■ Edinburgh survey (n=250)  
■ Liège survey (n=1858)



# A clinical definition of consciousness



# A clinical-ethical imperative

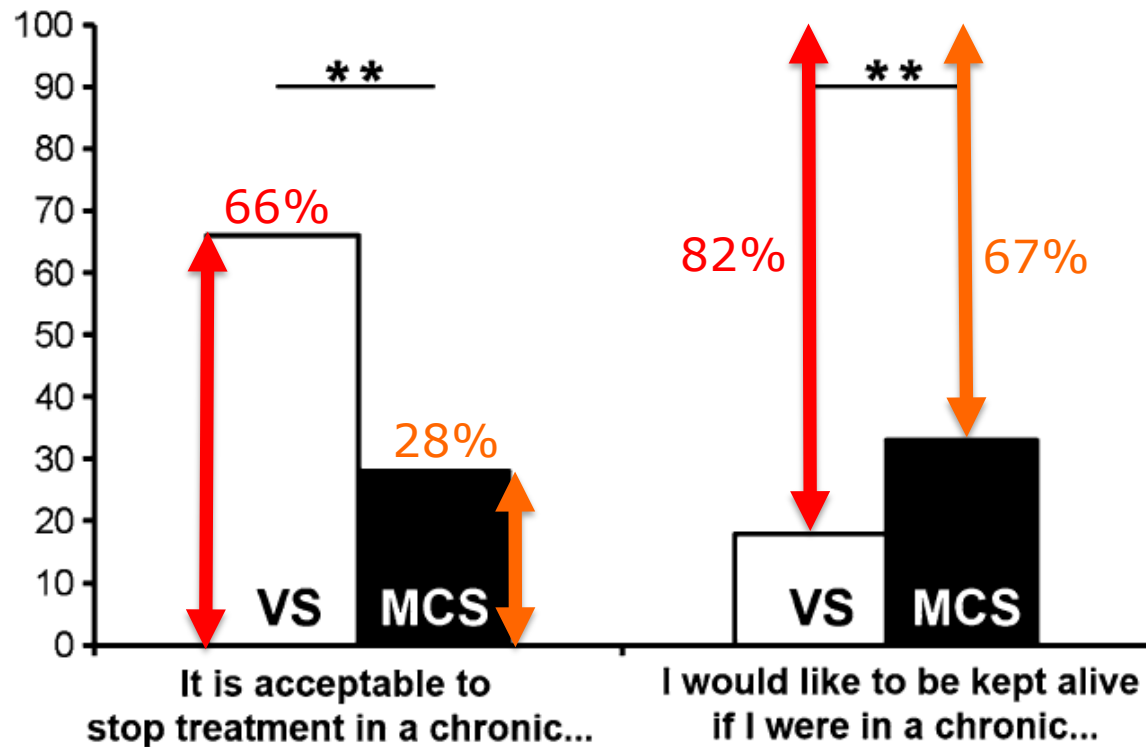
## Attitudes towards end-of-life issues in disorders of consciousness: a European survey



A. Demertzi · D. Ledoux · M.-A. Bruno ·  
A. Vanhaudenhuyse · O. Gosseries · A. Soddu ·  
C. Schnakers · G. Moonen · S. Laureys



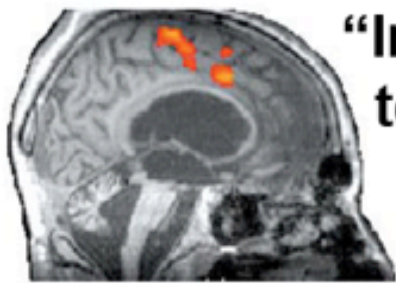
2,475 medical professionals



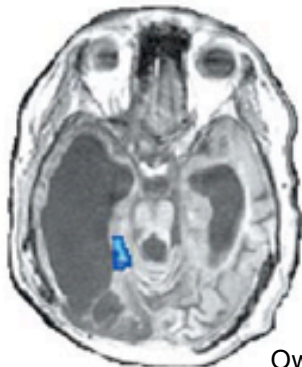


# Neuroimaging paradigms

## Active paradigms



“Imagine playing tennis”



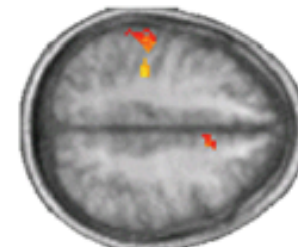
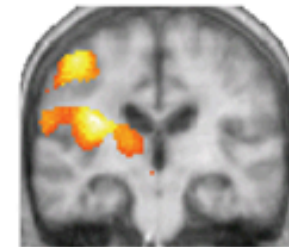
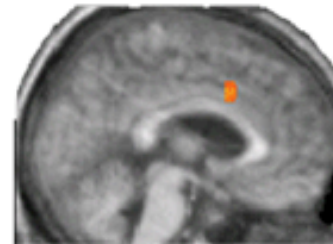
“Imagine visiting the rooms of your house”

Owen et al, Science 2006  
Monti & Vanhaudenhuyse et al, NEJM 2010

## Passive paradigms



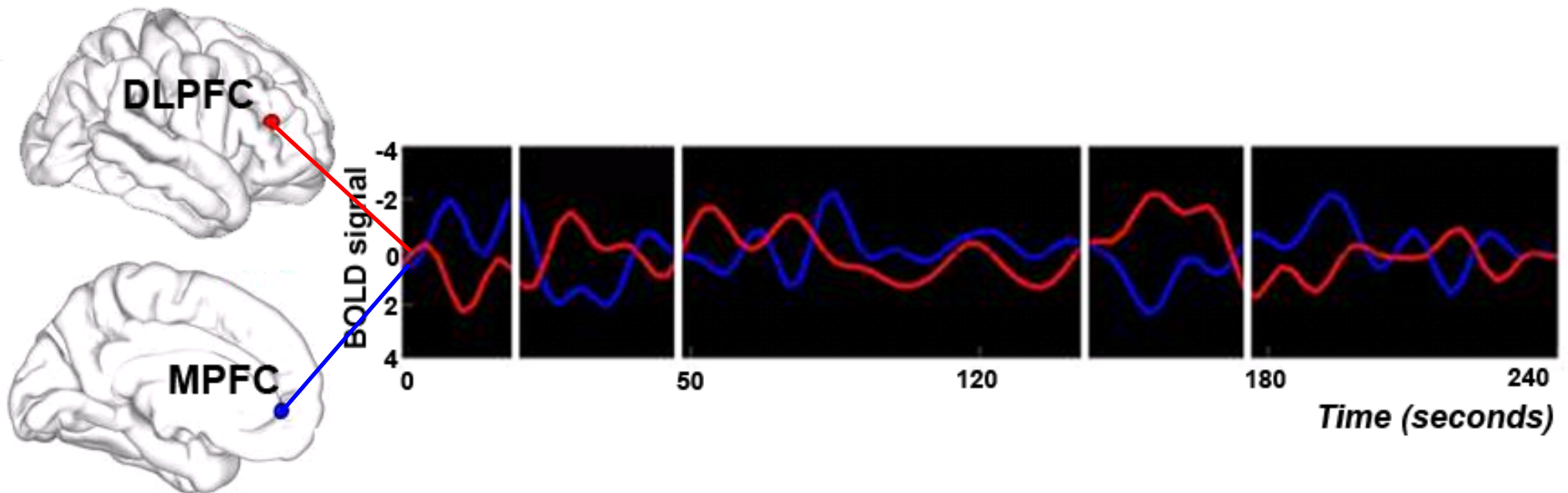
median nerve



Boly et al, Lancet Neurol 2008

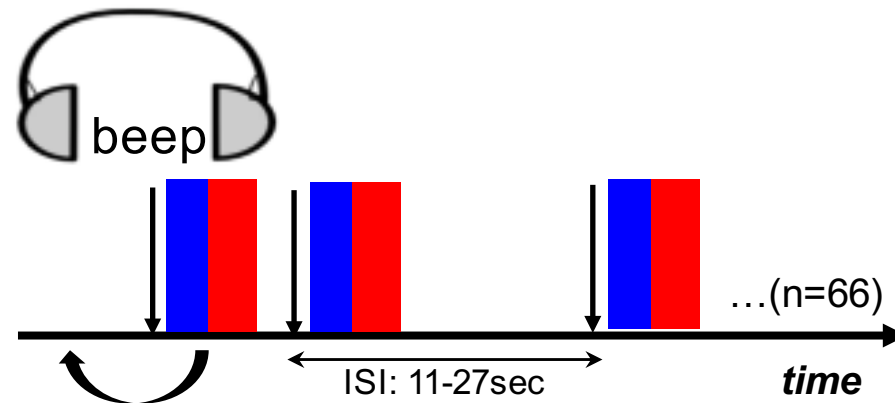
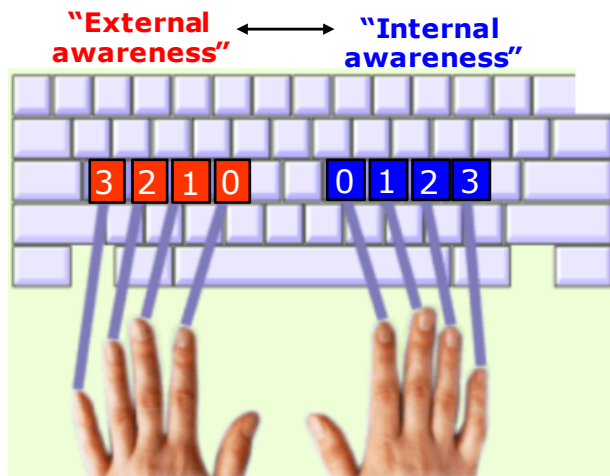
# Intrinsic brain activity & awareness

**External awareness  
or anticorrelated network**



**Internal awareness  
or Default mode network**

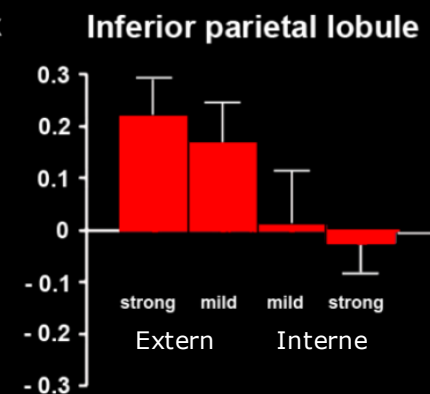
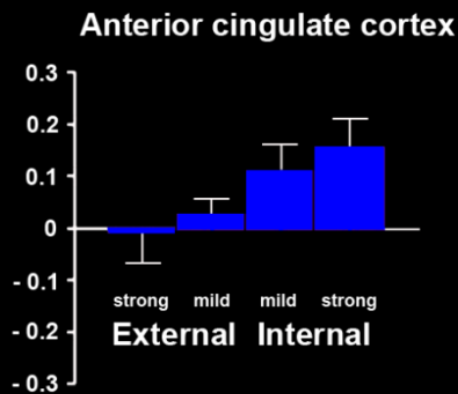
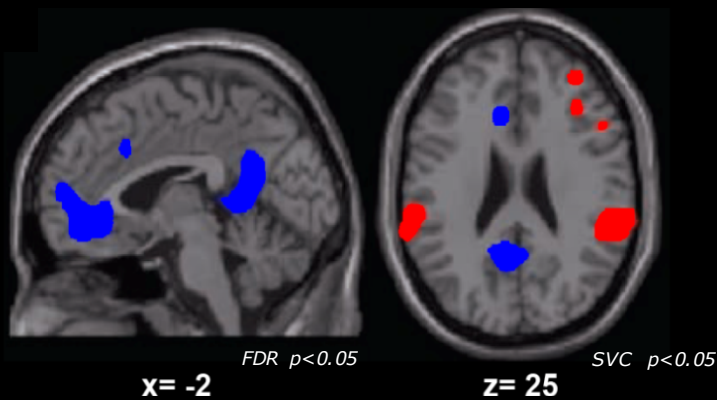
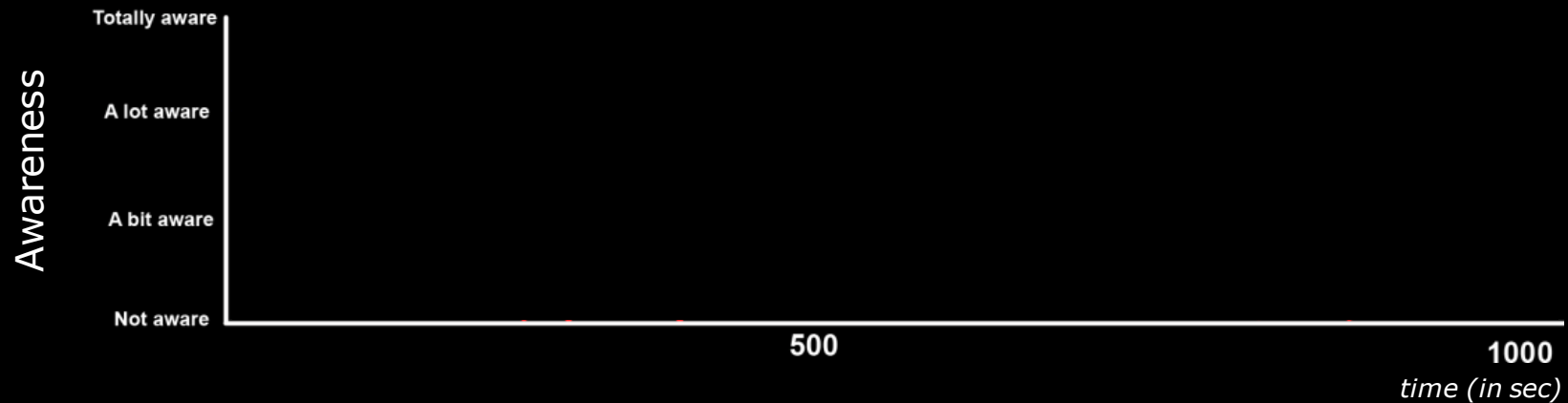
# Cognitive counterpart of intrinsic activity: the task



# The cognitive counterpart of intrinsic activity

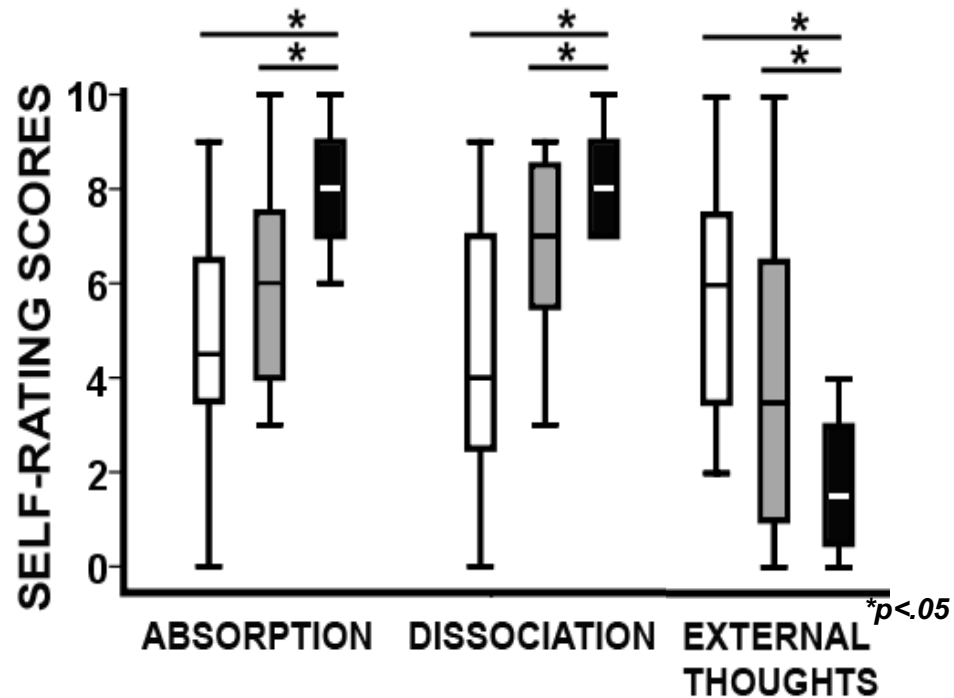
■ Internal awareness  
■ External awareness

External-internal:  $r = -0.44, p < .02$   
 Mean switch: 0.05Hz (range: 0.01-0.1)



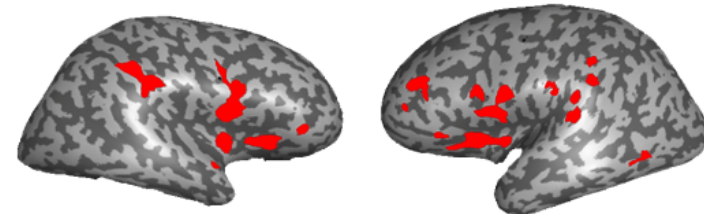
# Anticorrelated brain connectivity is modified in hypnosis

- Normal consciousness
- Autobiographical mental imagery
- Hypnosis

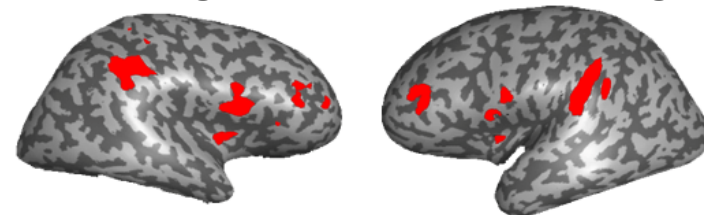


## EXTRINSIC SYSTEM

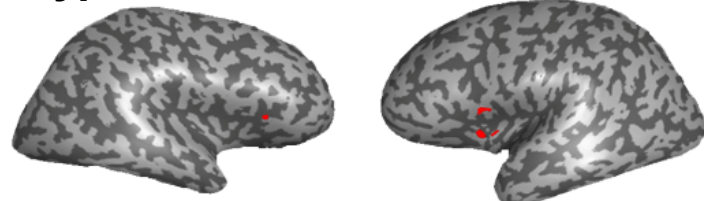
Normal consciousness



Autobiographical mental imagery



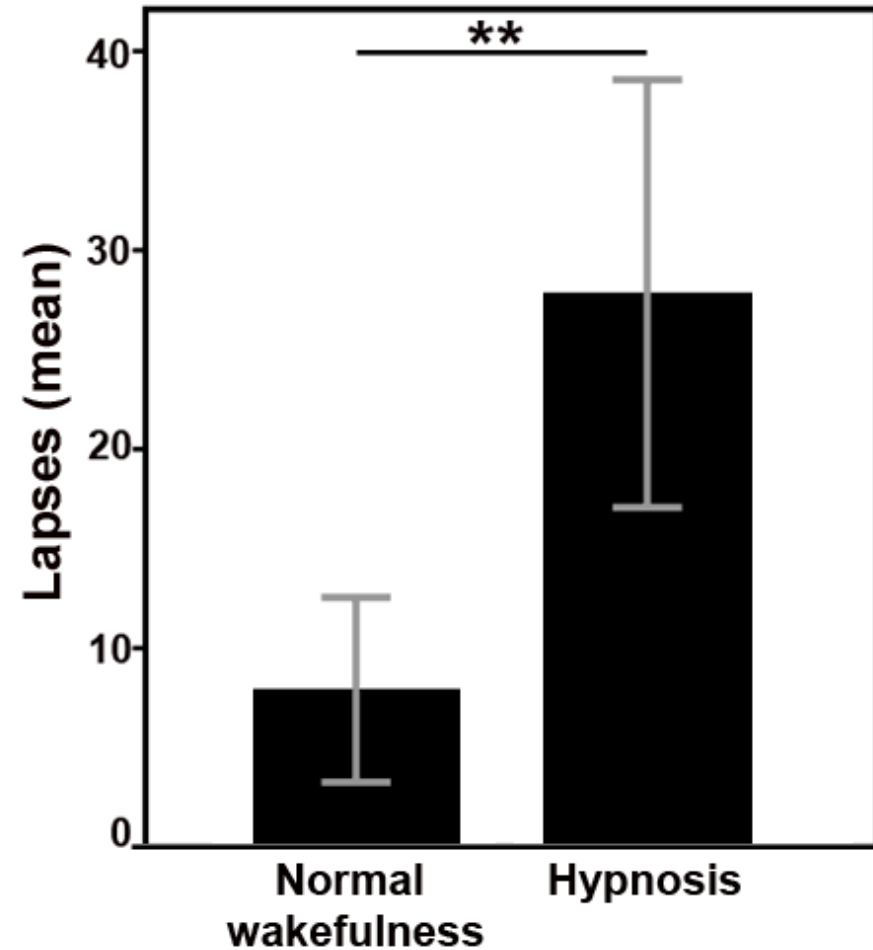
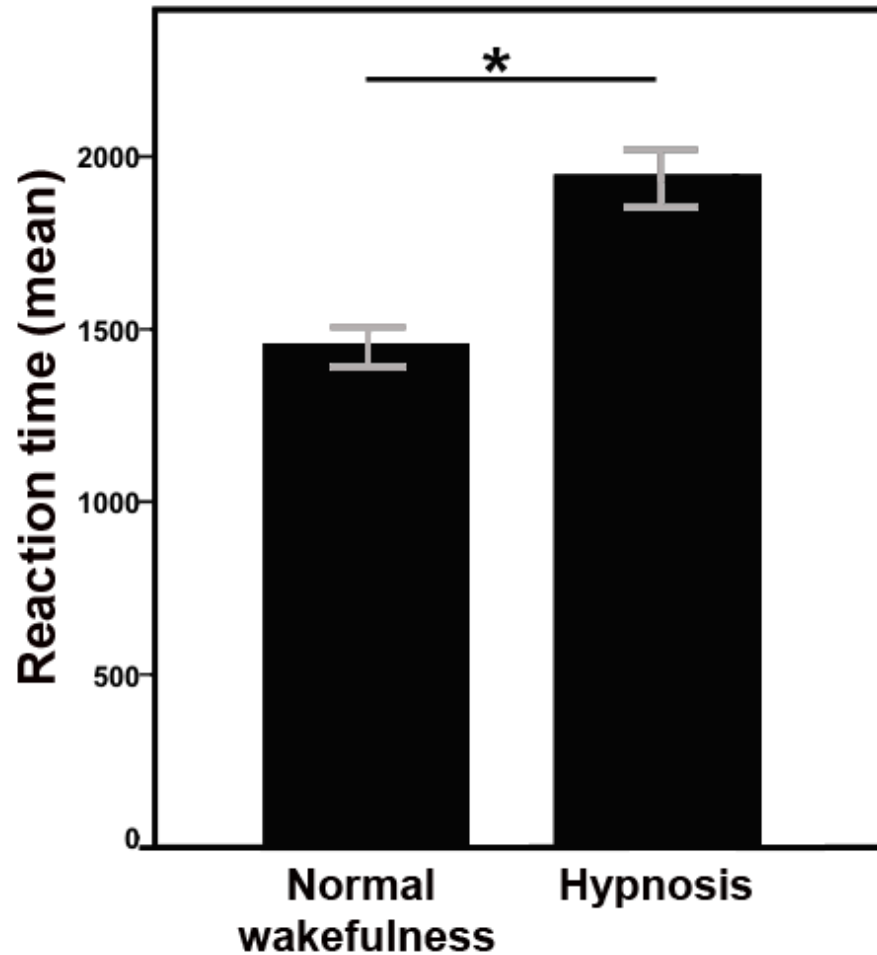
Hypnosis



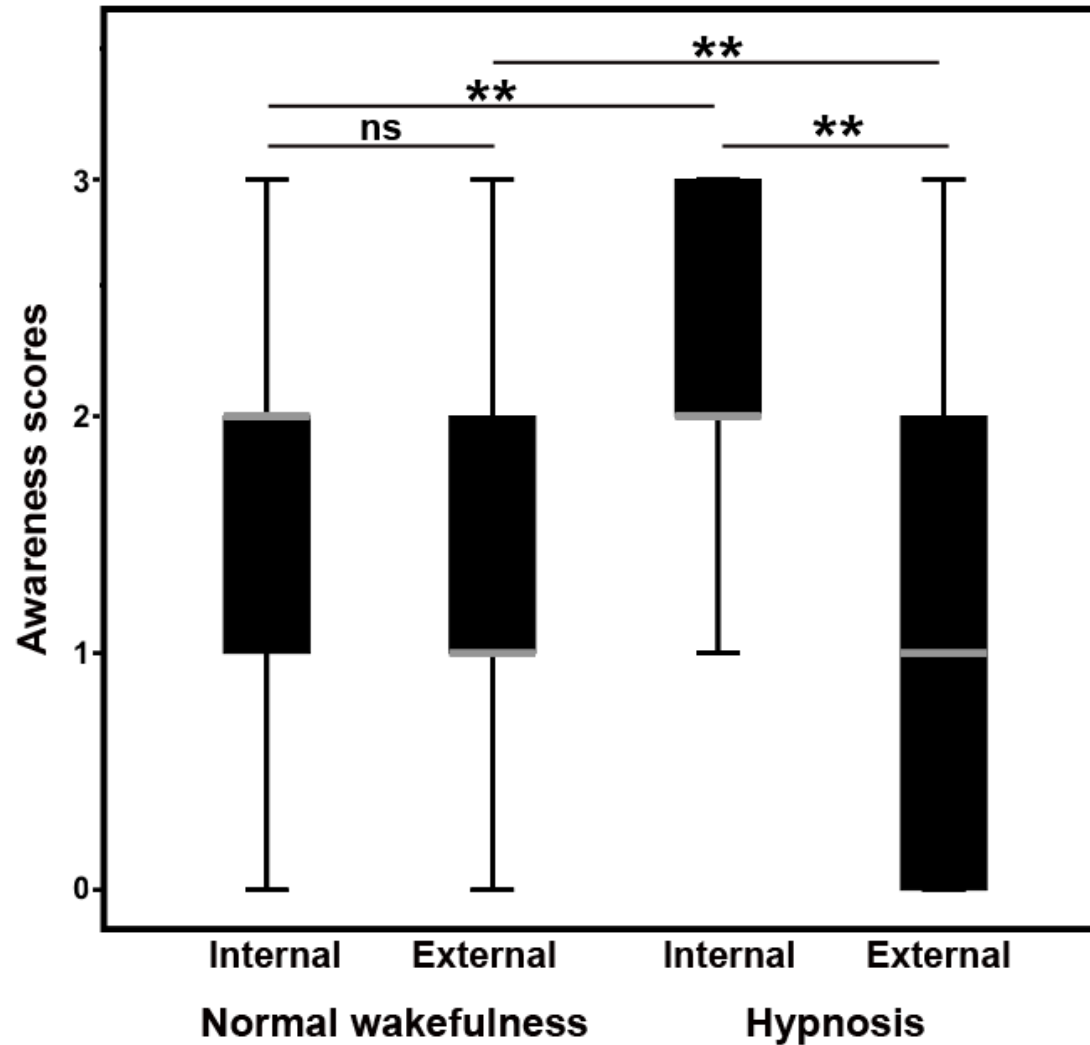
*p < 0.05 corrected for multiple comparisons*



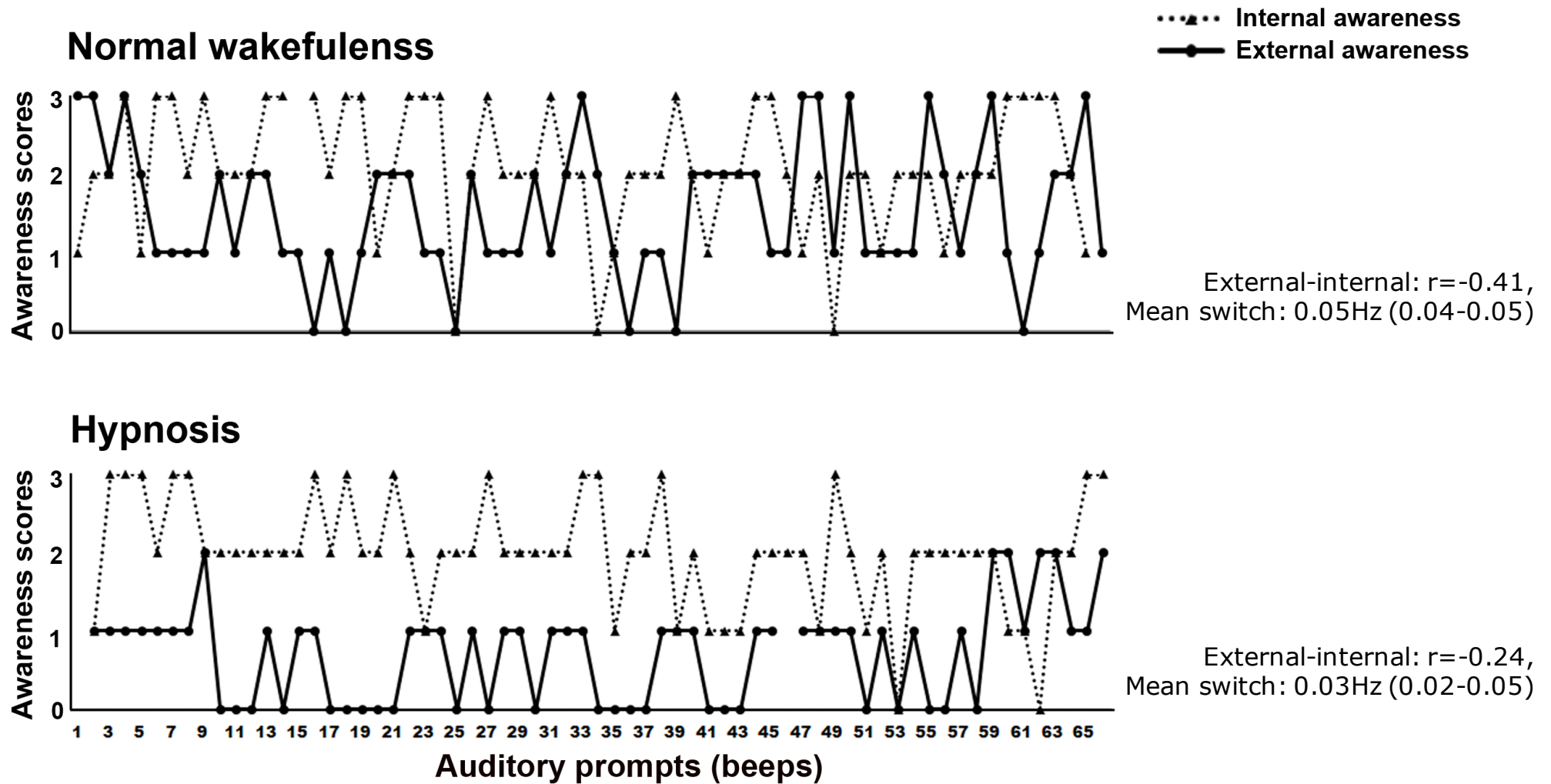
# Behavior is modified in hypnosis



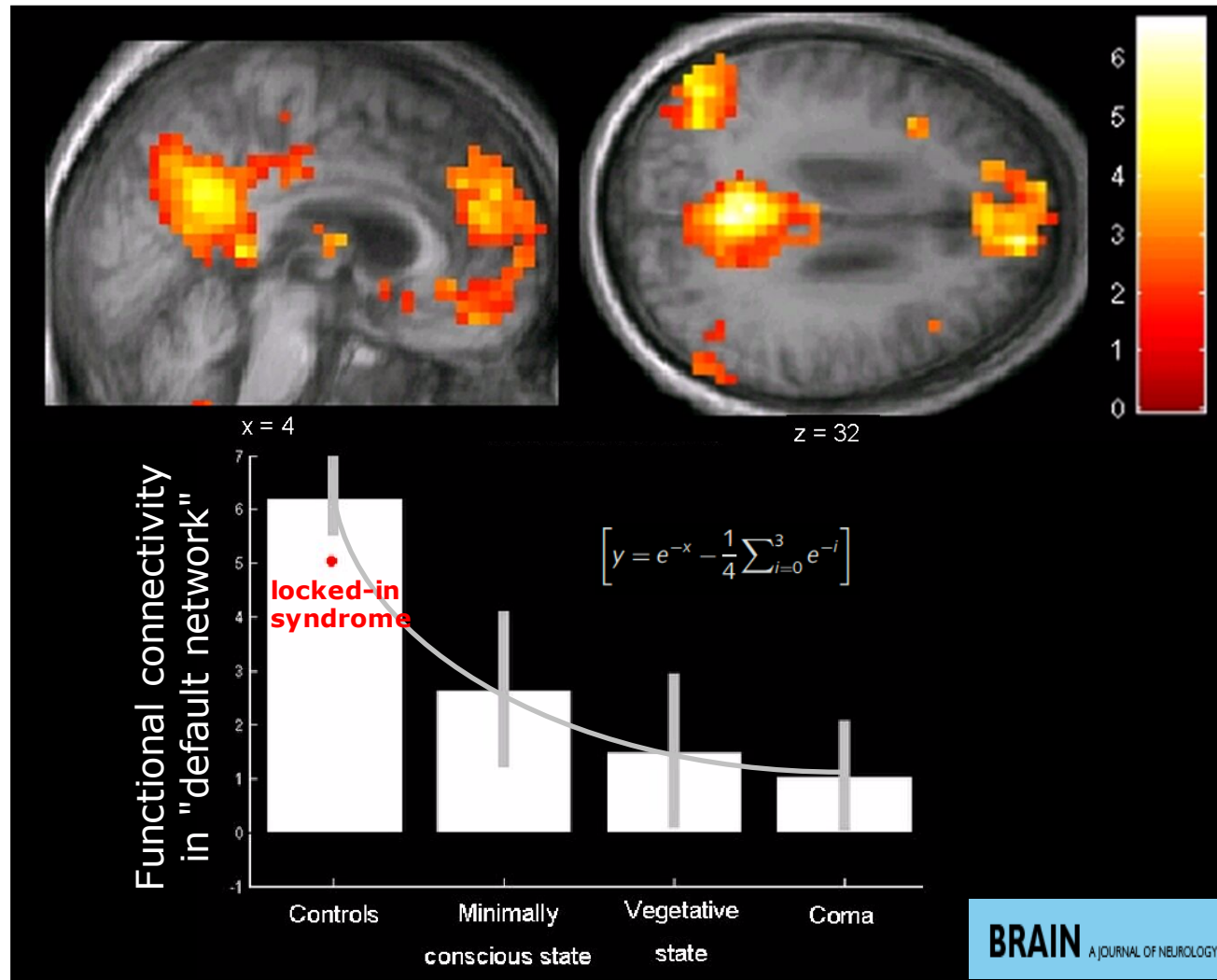
# Awareness is modified in hypnosis (1)



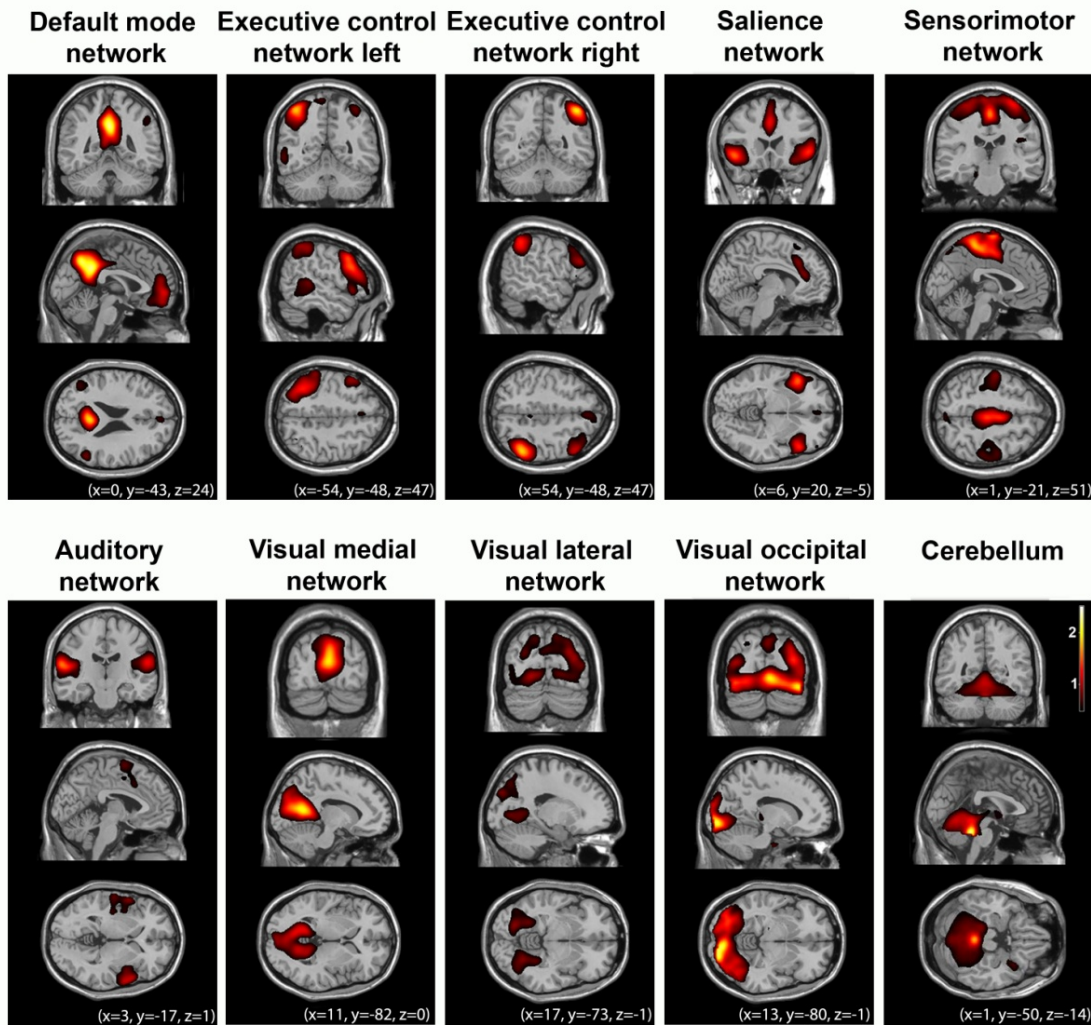
# Awareness is modified in hypnosis (2)



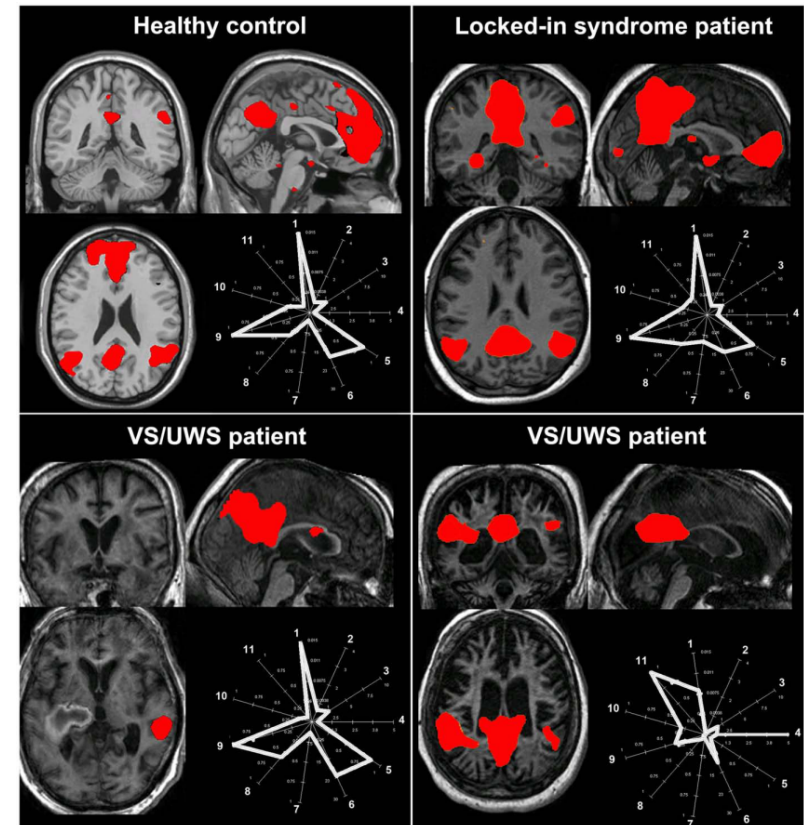
# Disrupted DMN in patients



# Multiple RSNs in DOC: issues



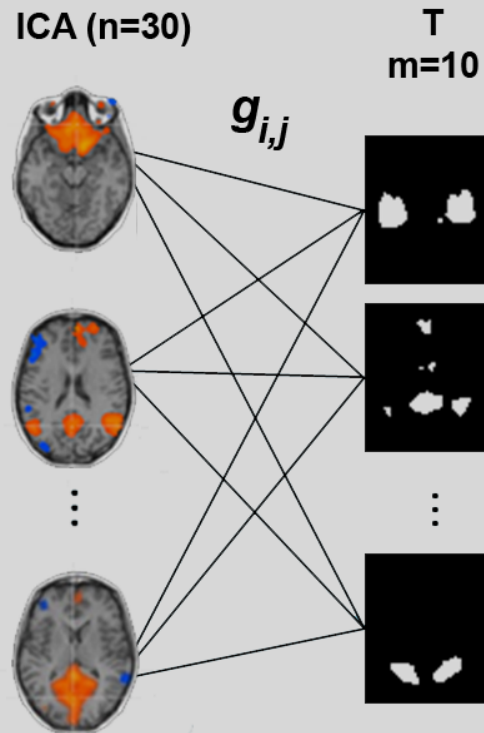
## A challenge....



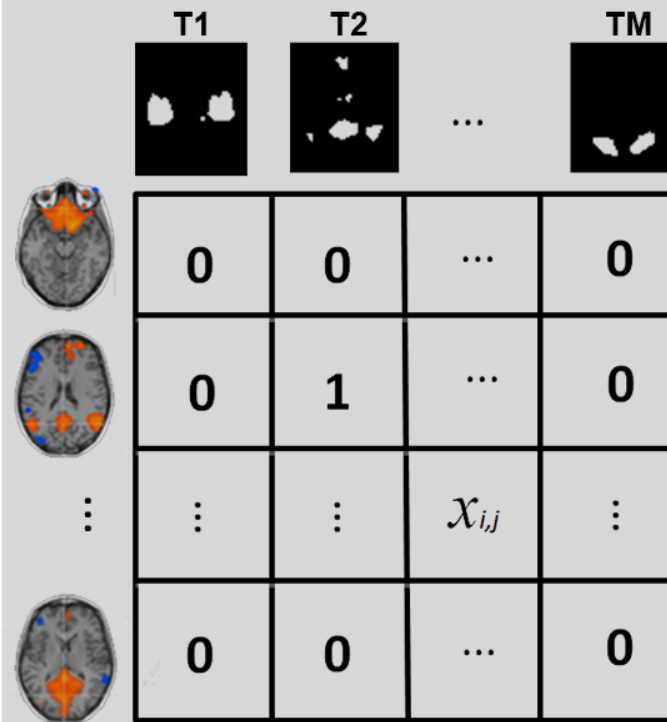


# Multiple RSNs in DOC: an approach

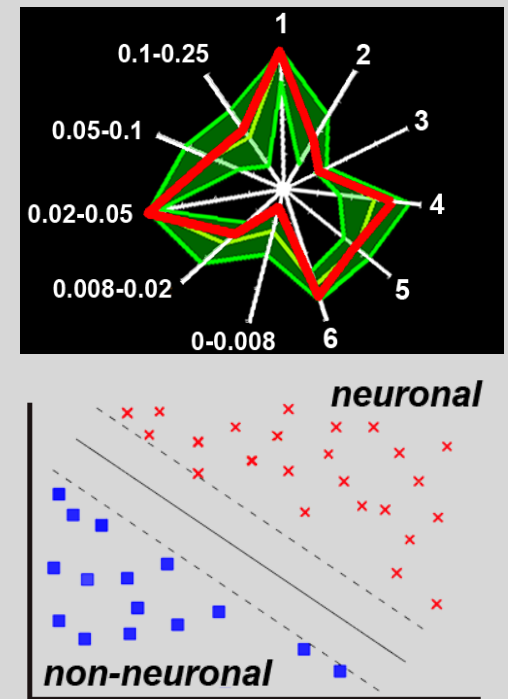
## 1. Goodness-of-fit calculation



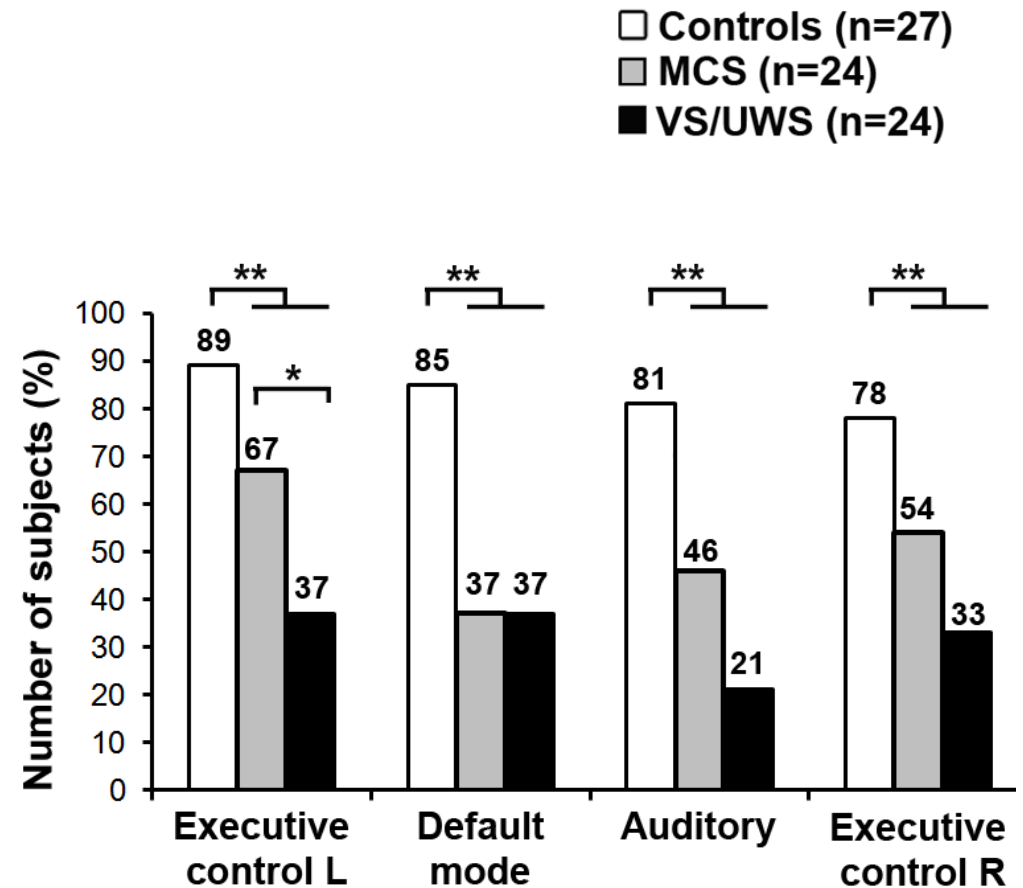
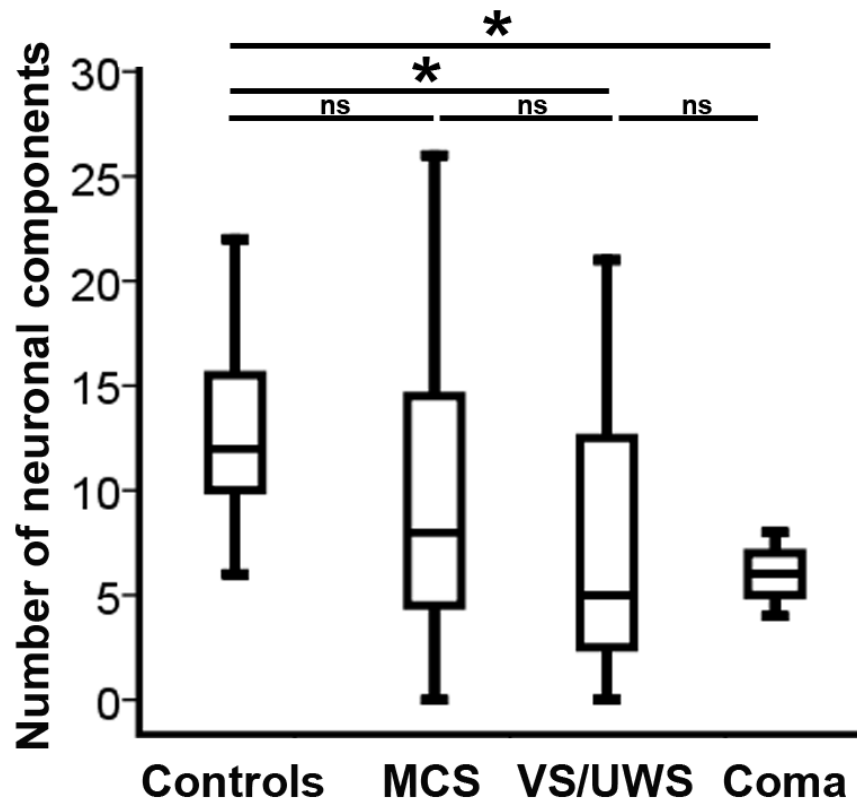
## 2. Multiple template assignment



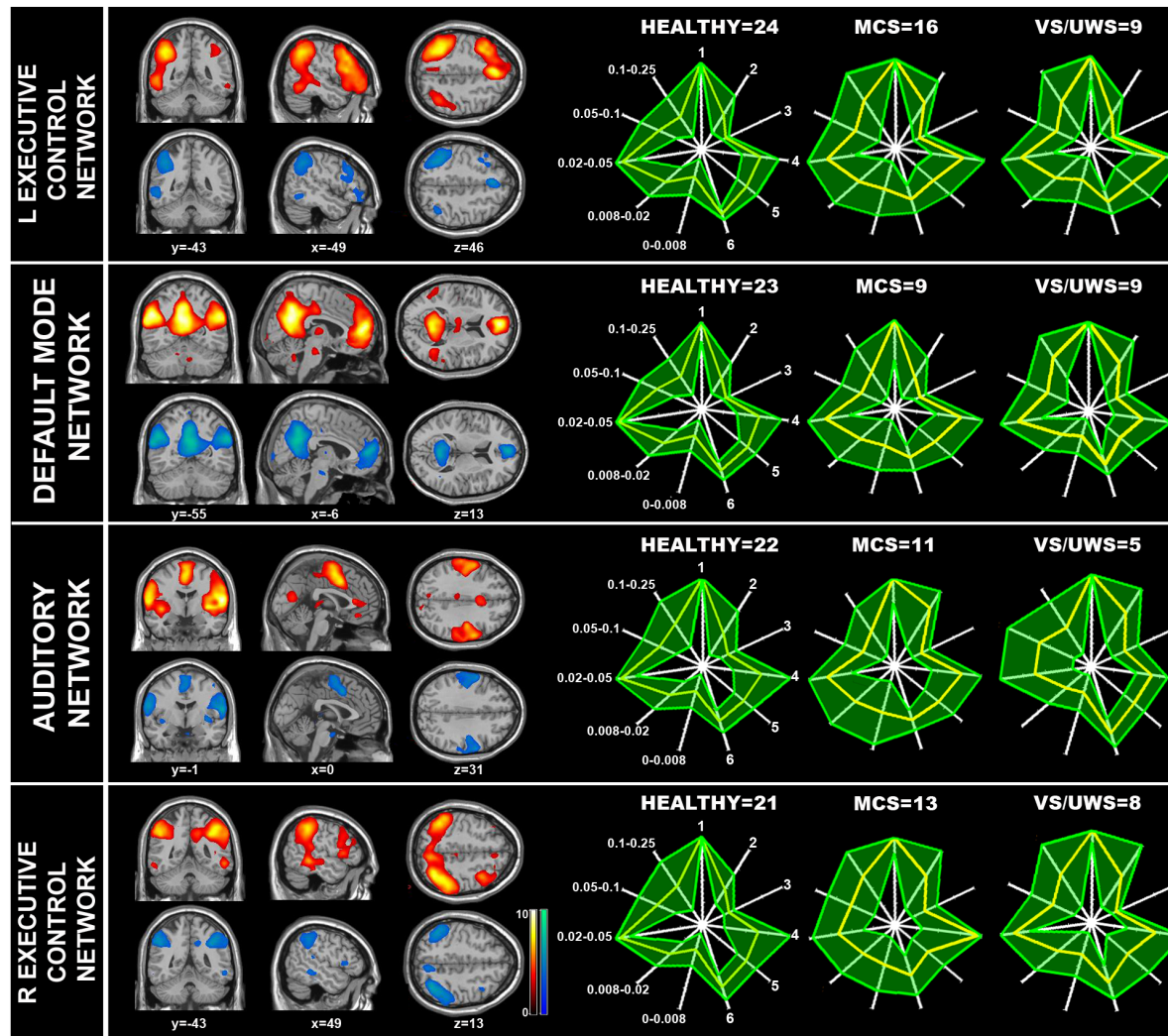
## 3. "Neurality" test



# Fewer "neuronal" networks in DOC



# Voxel-wise group comparisons



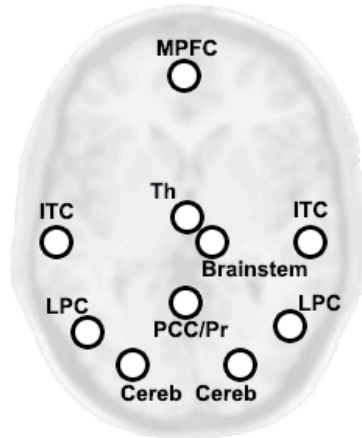
Controls N=27  
 MCS N=24  
 VS/UWS N=24

# Classification feature: “neuronality”

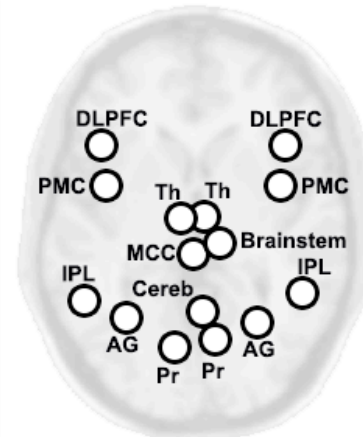
Performance measures	Accuracy	TPR healthy	TPR patients	Selected RSNs
	<b>Healthy vs. all patients</b>			
Occurrence	85.3	.82	.87	Auditory, DMN
Occurrence & GOF	82.6	.70	.89	Auditory, DMN, Visual lateral
GOF	80	.78	.81	Auditory, DMN, ECNL, Visual lateral

# The studied networks

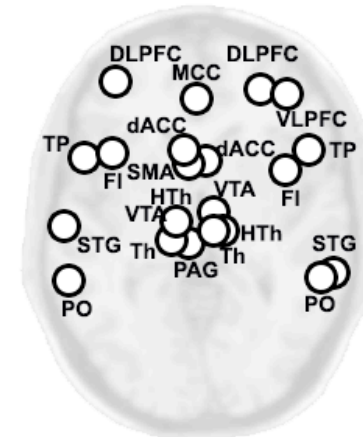
**Default mode network**



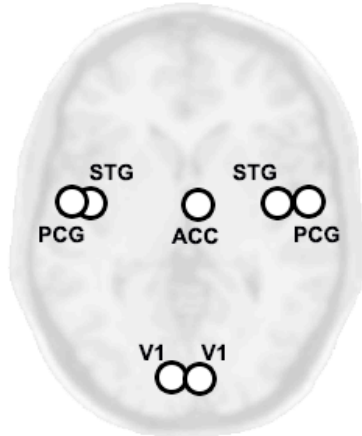
**Frontoparietal network**



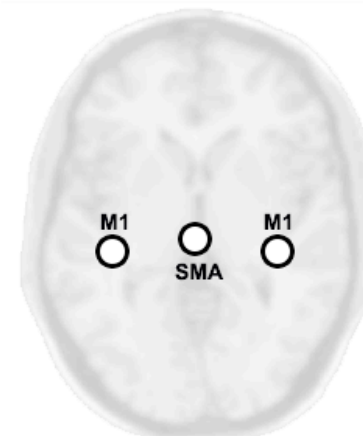
**Salience network**



**Auditory network**



**Somatosensory network**

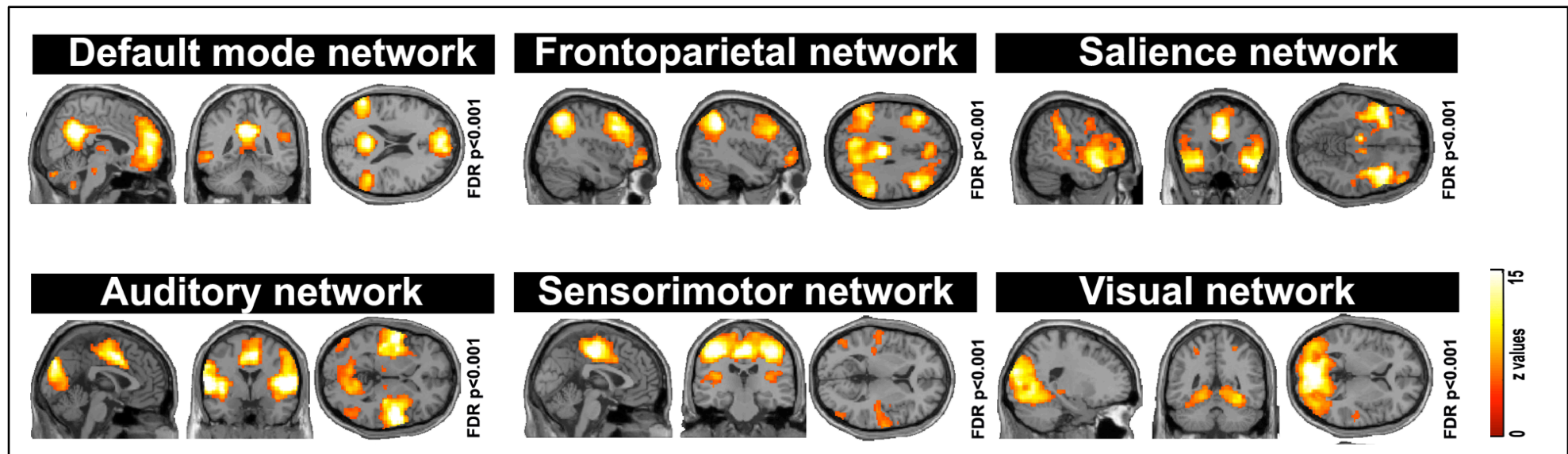


**Visual network**



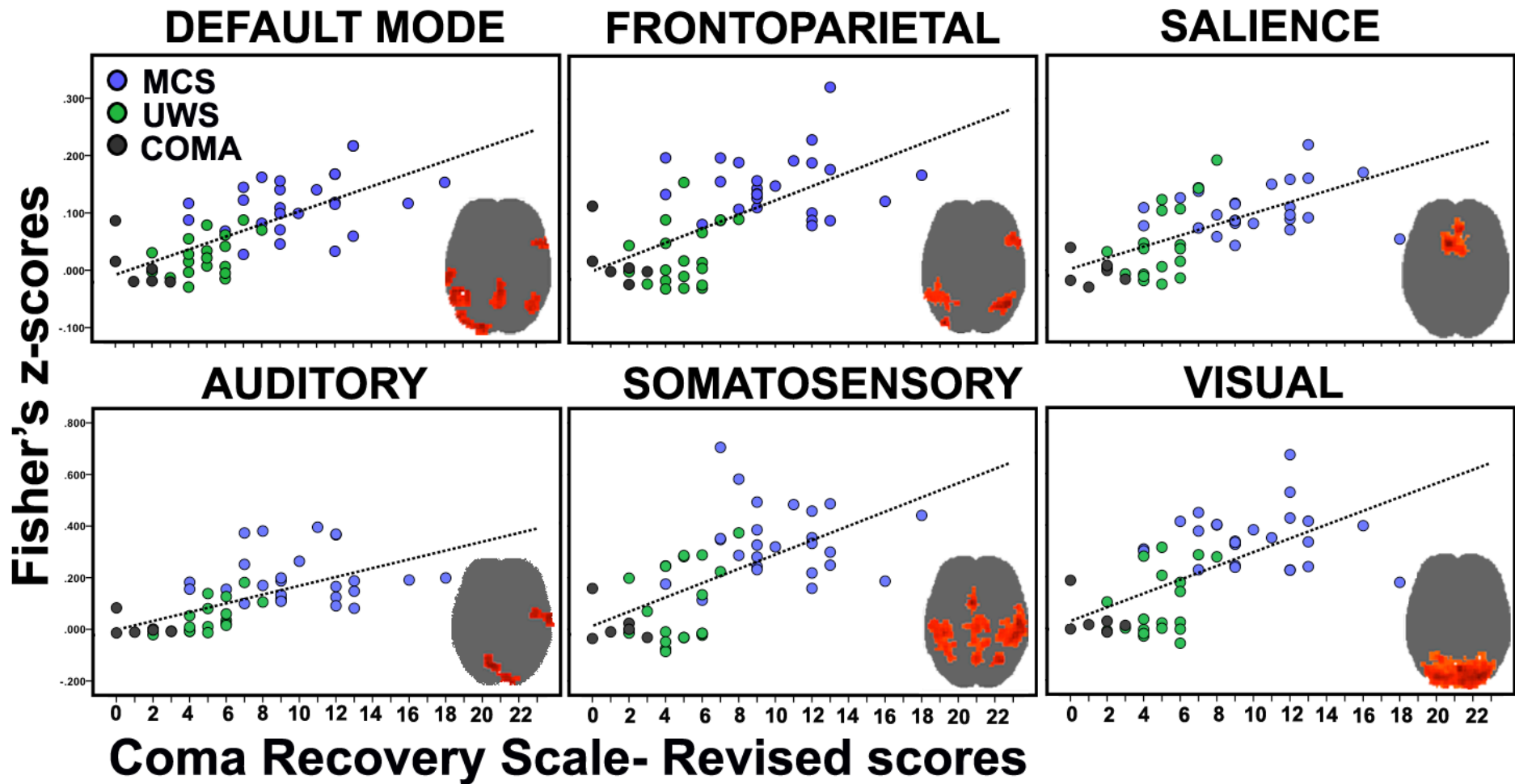


# Network connectivity in healthy



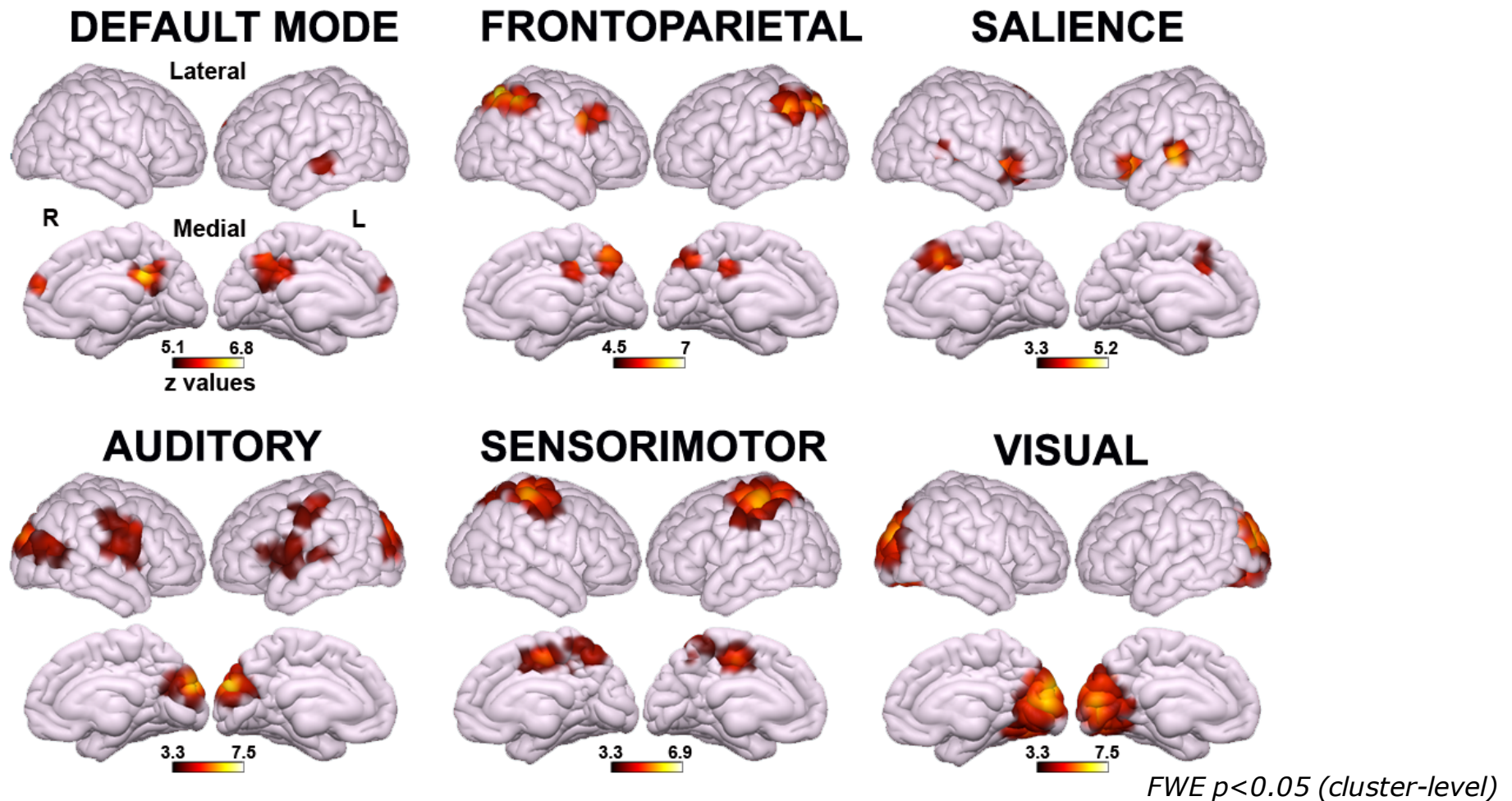
**BRAIN** A JOURNAL OF NEUROLOGY

# Intrinsic connectivity reflects level of C



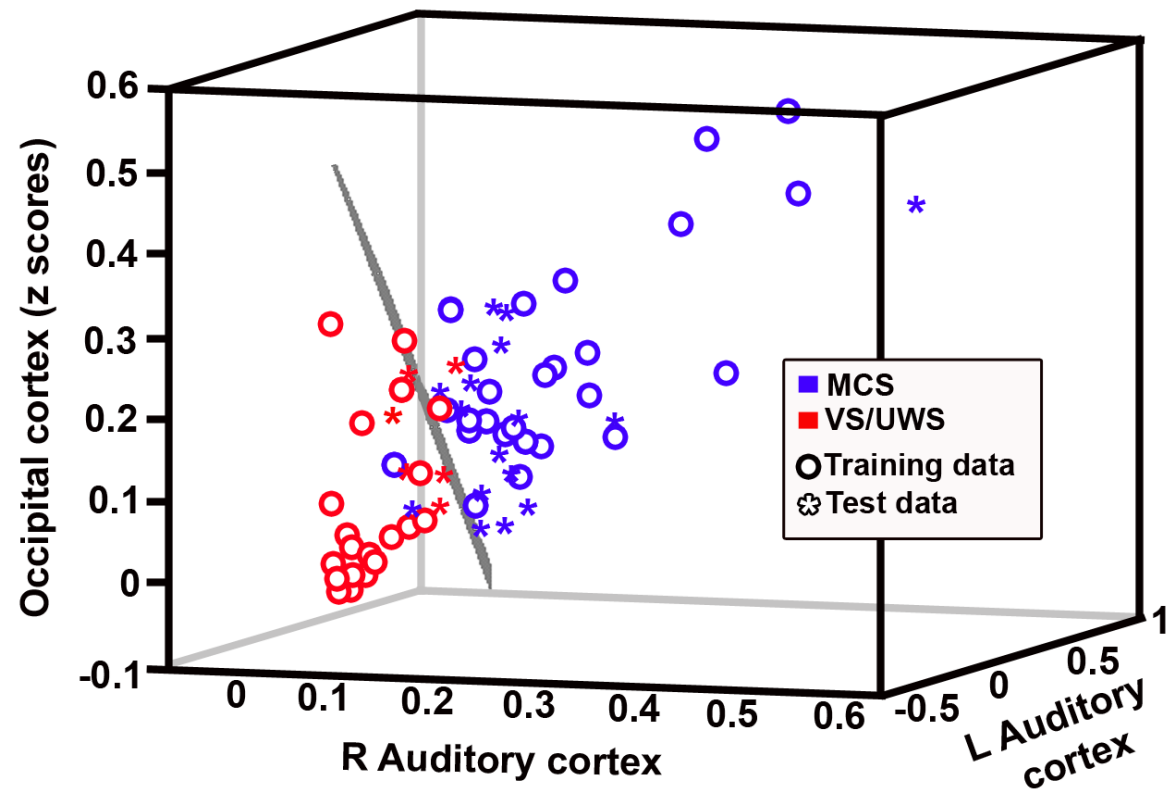
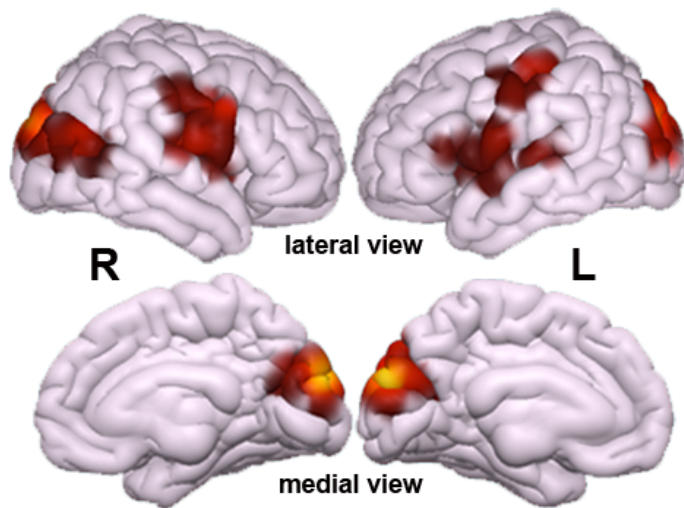
# Finding the discriminative features

## MCS > VS/UWS



# Training dataset: patients (Lg)

- 26 MCS, 19 VS/UWS
- 14 trauma, 28 non-trauma, 3 mixed
- 34 patients assessed >1m post-insult

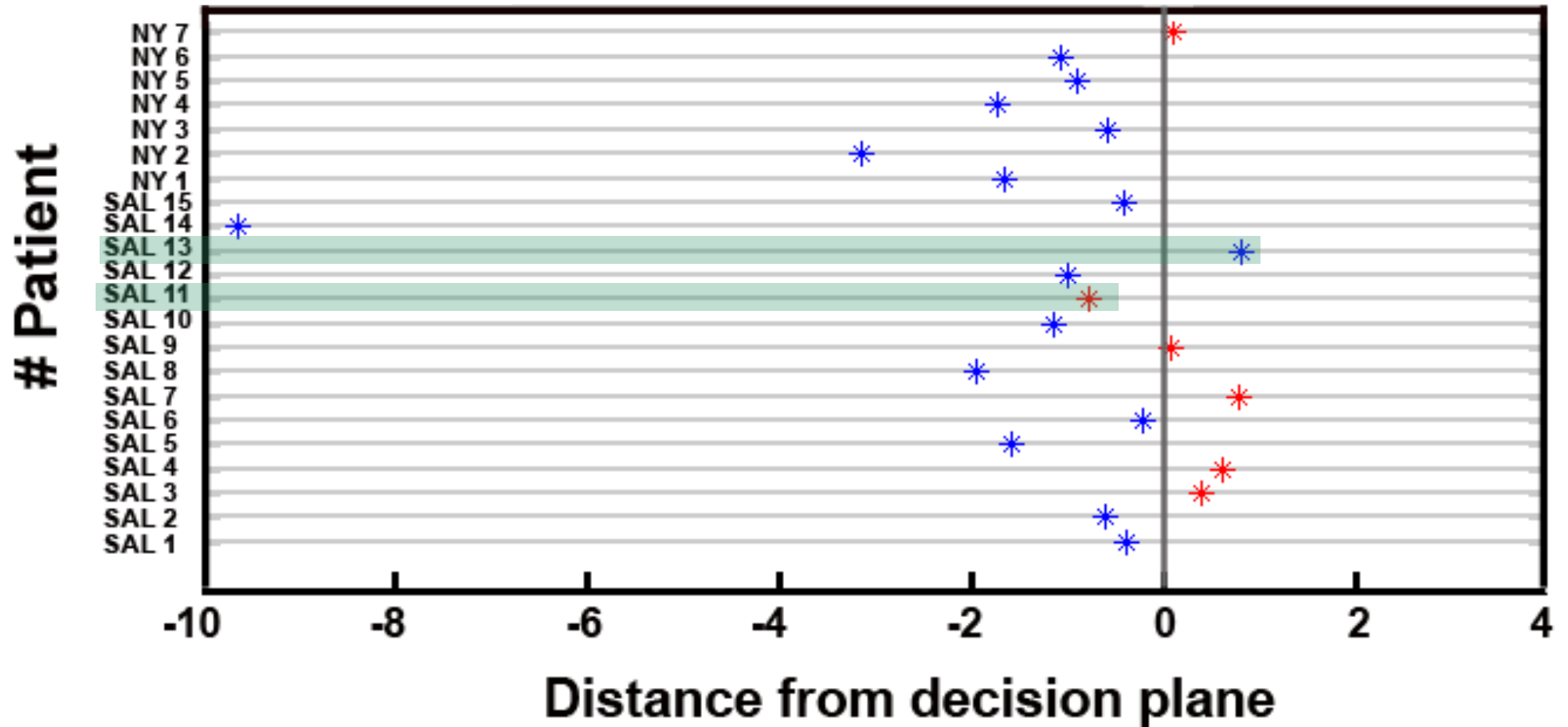


# Validation dataset: patients (NY, Sal)

**BRAIN** A JOURNAL OF NEUROLOGY

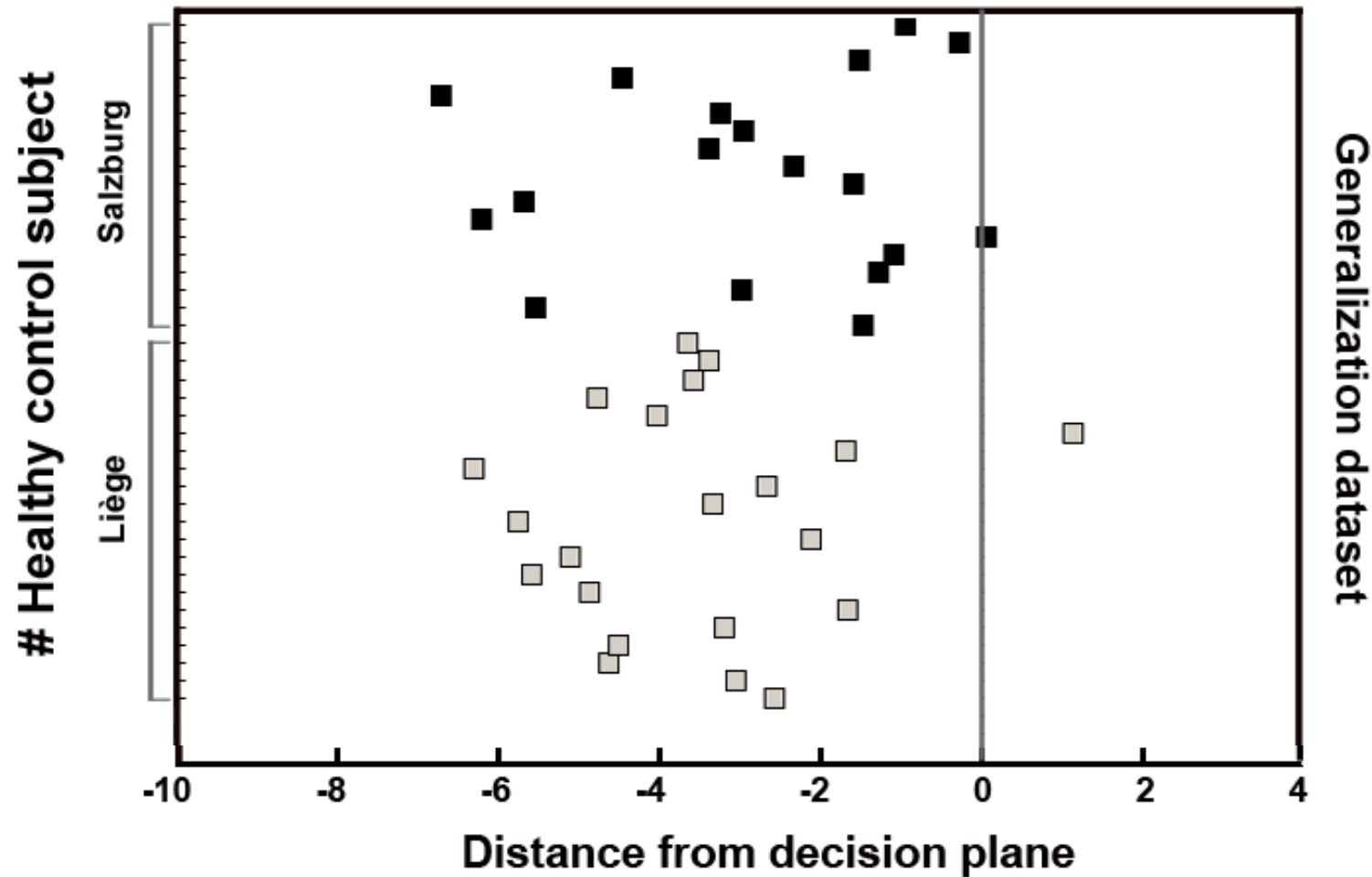
## Clinical diagnosis

- MCS
- VS/UWS



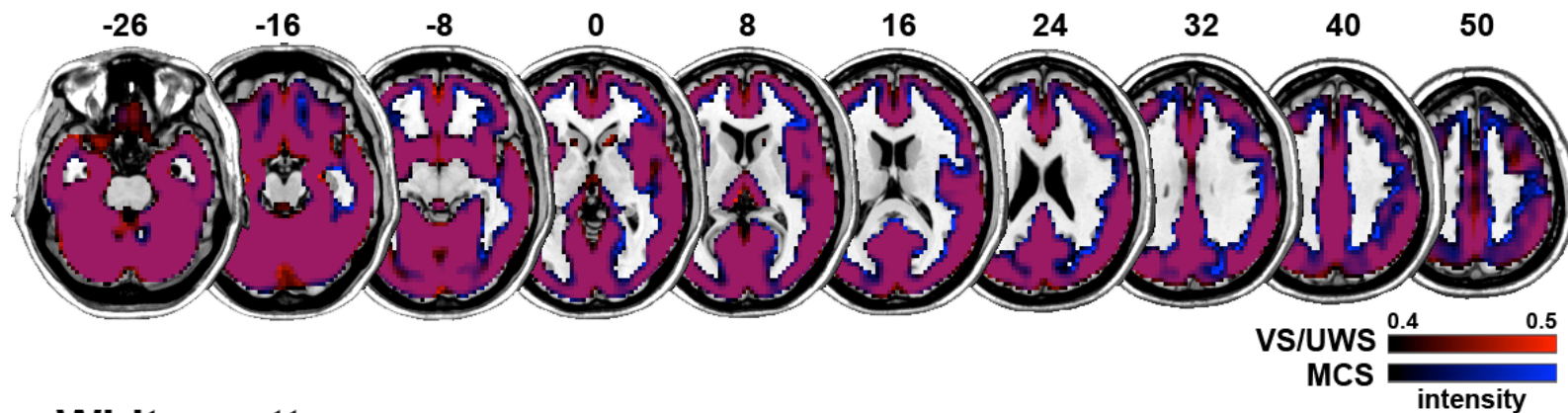


# Generalization dataset: healthy

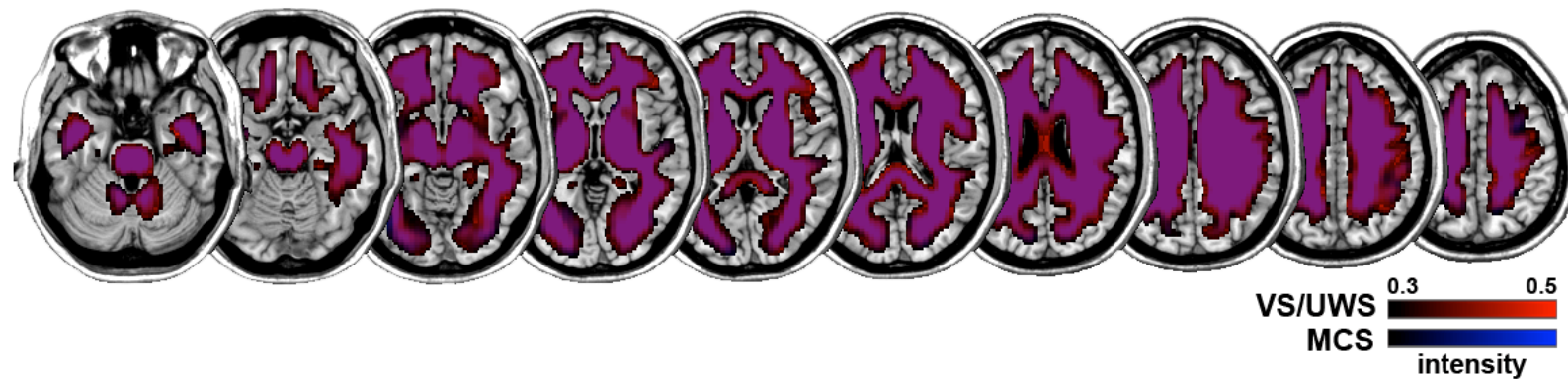


# Echoes from structural connectivity?

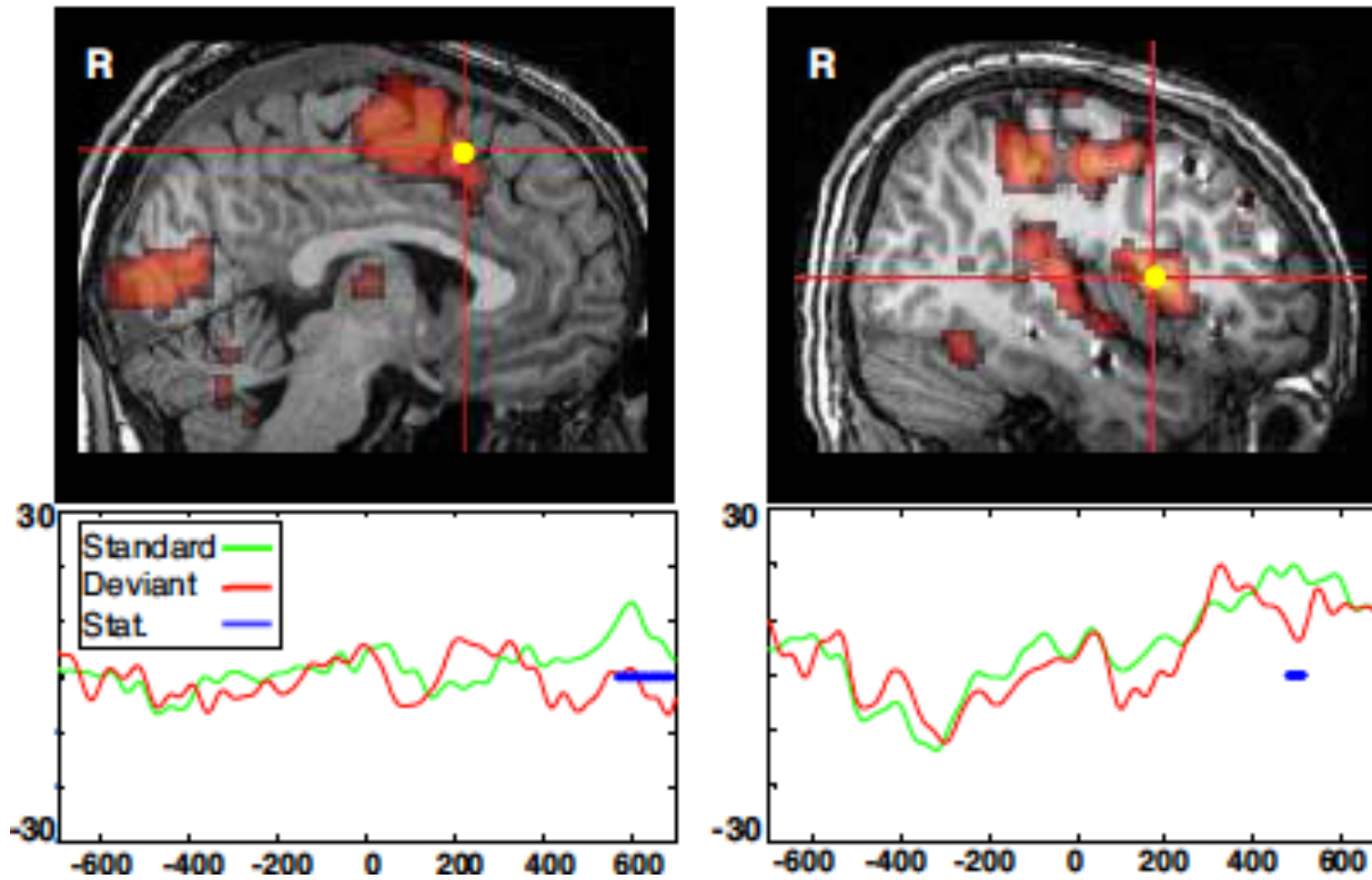
## Gray matter



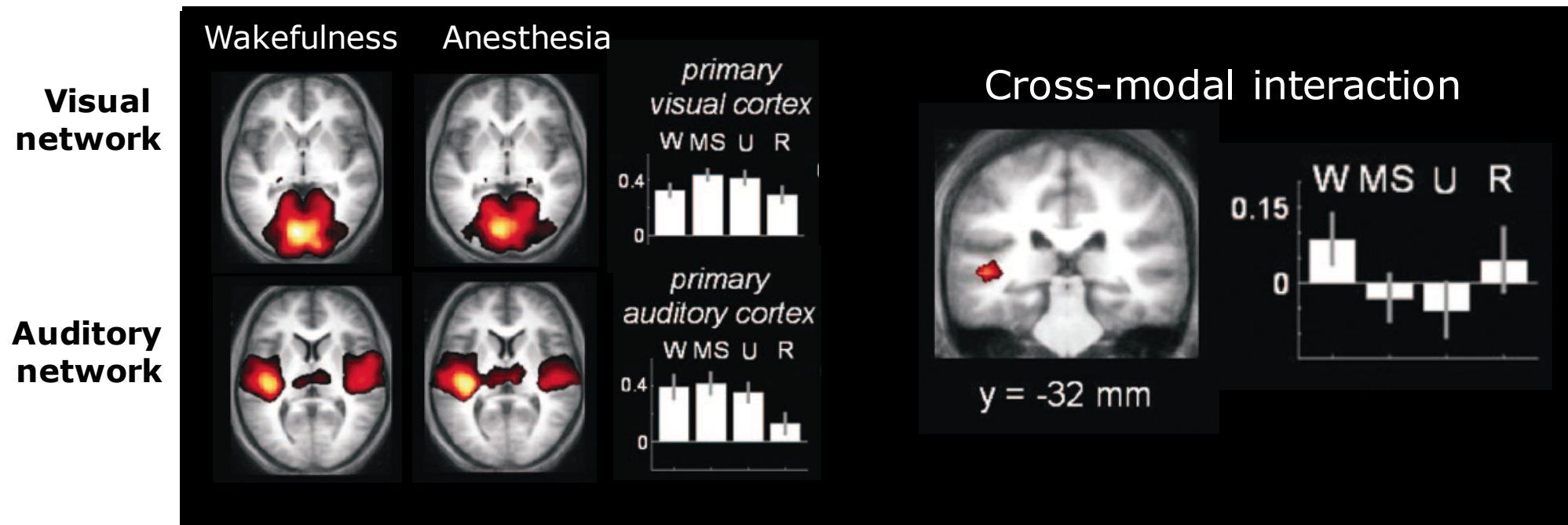
## White matter



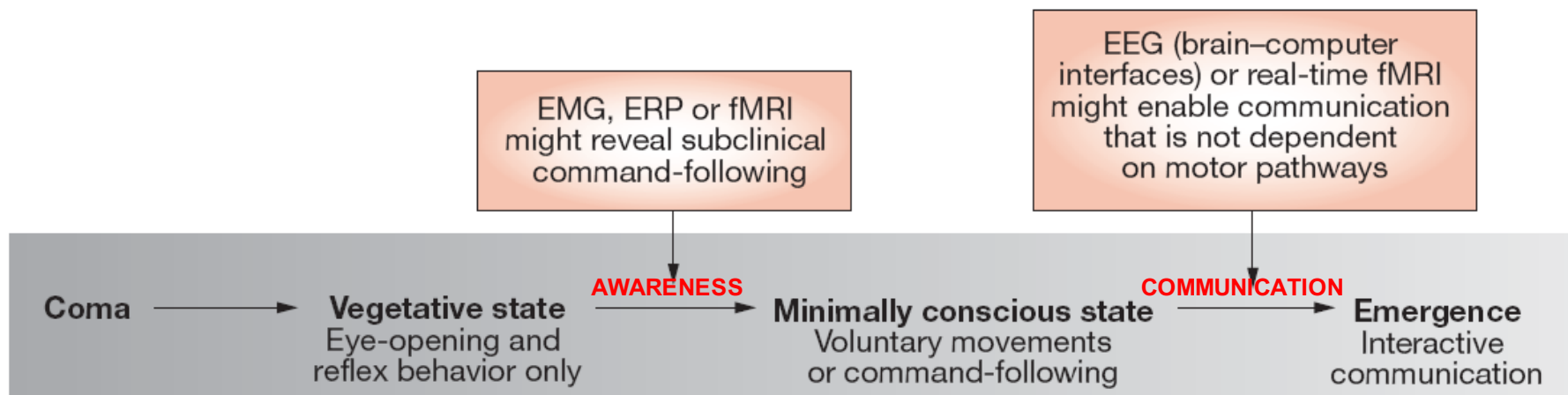
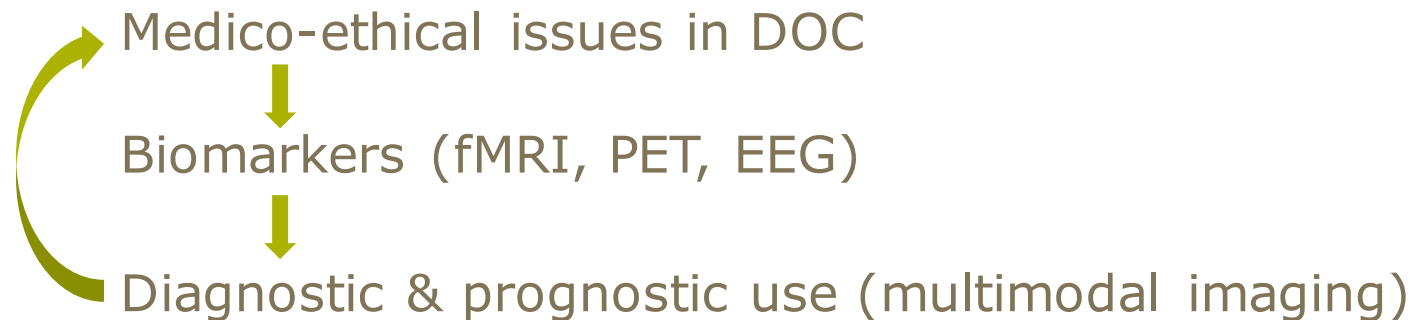
# Cross-modal interaction during conscious processing



# Cross-modal interaction demolishes under propofol anesthesia



# Translational research



[www.nature.com/clinicalpractice/neuro](http://www.nature.com/clinicalpractice/neuro)





Niko Schiff & Henning Voss,  
Weill Cornell Medical College

Julia Sophia Crone & the  
Salzburg team

The departments of  
Neurology and Radiology in  
Liege and Paris

**...but mostly patients  
and their families!**



[athina.demertzi@icm-institute.org](mailto:athina.demertzi@icm-institute.org)