

WalES: an integrated database to assess Ecosystem Services in Wallonia

Maebe Laura¹, Pipart Nathalie², Dendoncker Nicolas², Boeraeve Fanny¹ and Dufrêne Marc¹

¹Biodiversity and Landscape Unit, Gembloux Agro-Bio Tech, University of Liège, 5030 Gembloux, B-5030, Belgium

²Department of Geography, University of Namur, 5000 Namur, Belgium

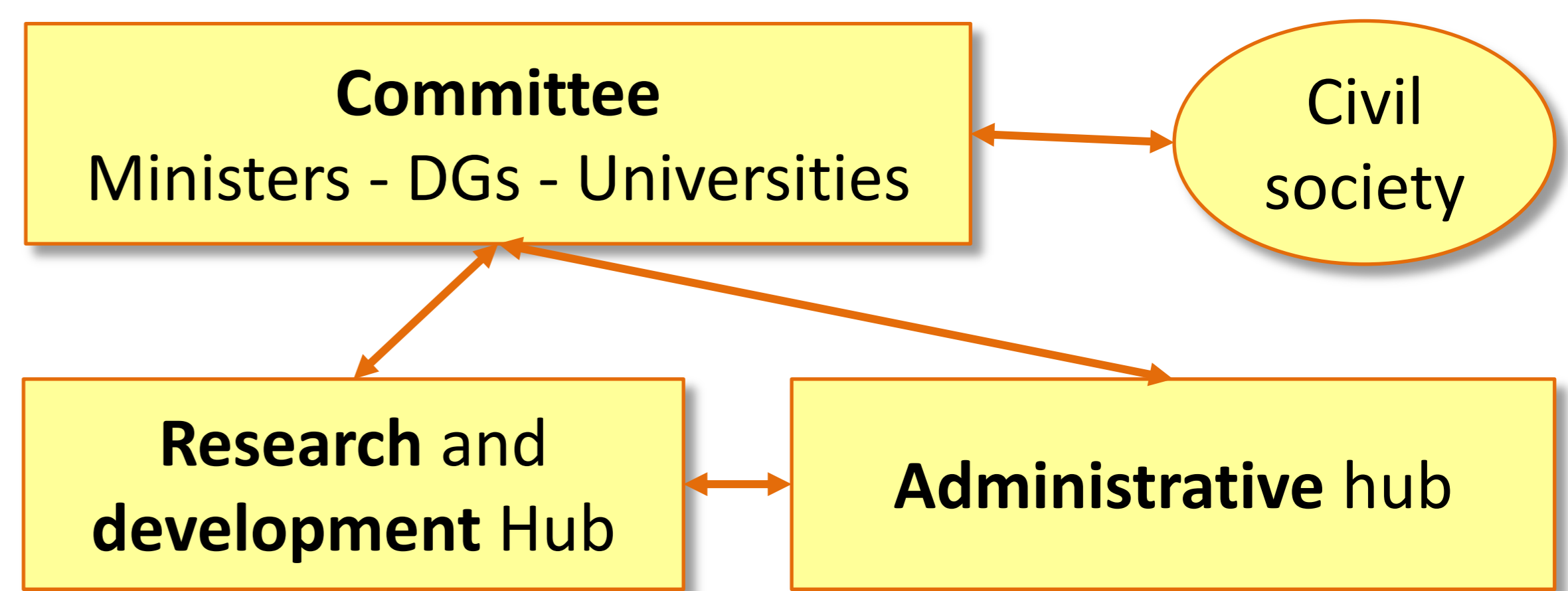


A transdisciplinary Walloon platform on ES

The WalES platform is a **common interface** between:

- regional and local administrations;
- scientists;
- civil society.

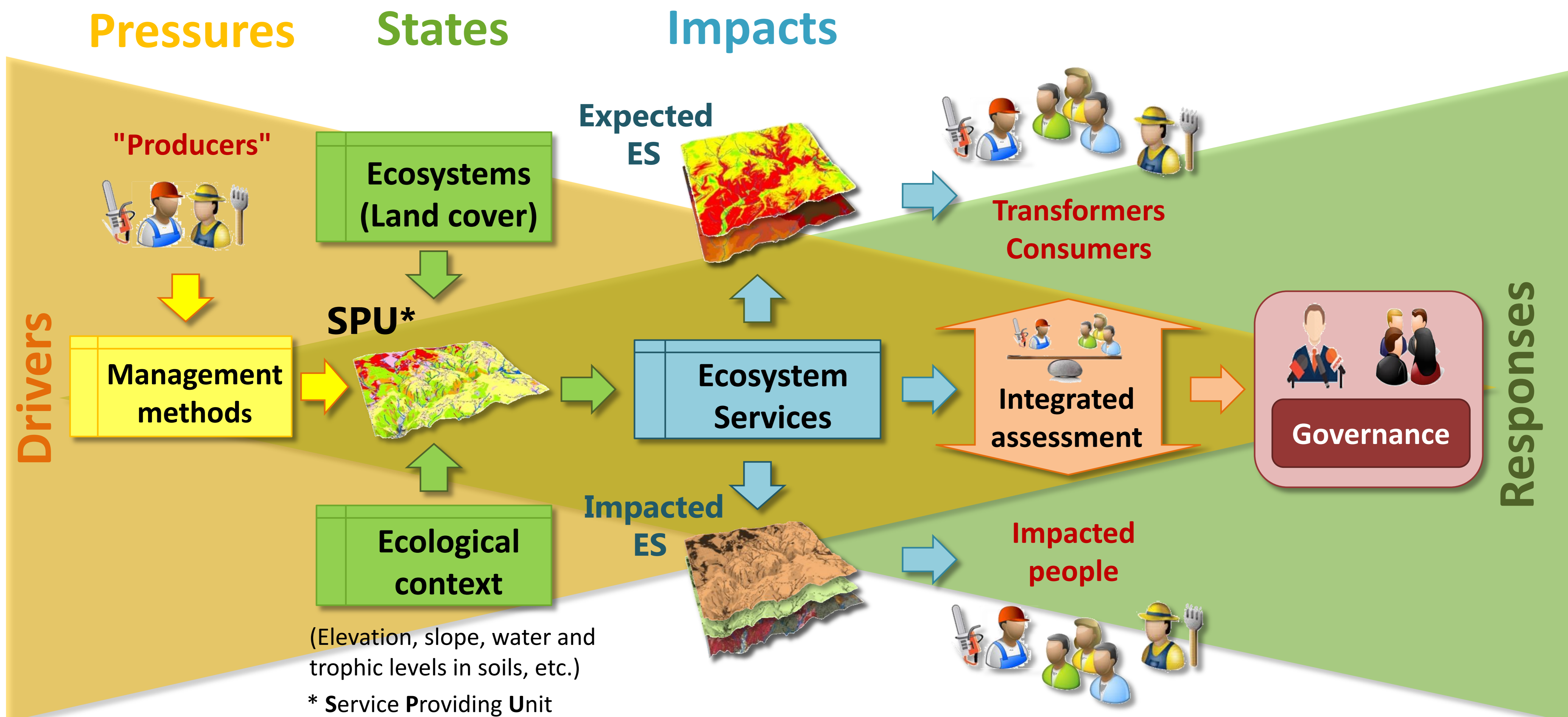
In order to **build strong links** between administrations responsible for information flows, scientists working on ES valuations and civil society which depends on ES for their well-being.



Conceptual model for ES assessment

Based on :

- **DPSIR** (Driver-Pressure-State-Impact-Response) framework;
- Value pluralism and integrated valuation (ecological, social and some economical valuations).



Online database

The database is a **common and shared information system** detailing :

- Ecosystems in Wallonia;
- Ecosystem Services in Wallonia;
- Indicators, proxy, models to assess ES;
- Data to assess ES.



Conclusions

The **database** allows us to:

- Identify the best practices;
- Combine various data in order to improve their accuracy;
- Highlight missing data and methods needing further development.

Integrated assessment of ES by measuring:

- Their diversity of components (capacity, flow and demand);
- Plurality of values (biophysical, social and, if and when needed, economical values);
- Their interactions at different scales.

Take-home messages

Common and shared reference and information system
Integrated ES assessment in Wallonia



Gembloux Agro-Bio Tech
Université de Liège