

A new Information Technology tool for GP/FM

Towards e-archive for Wonca documents

Marc Jamoulle, md, mph.
GP & Health data management specialist

Dominique Dekeuster .
Information & Communication Technology adviser

GP/FM information needs

- Specific to General practice
- Low prevalence
- Patient minded
- Along the time line
- Biological & anthropological
- Care versus cure

information lost

- No data capture
- No communication
- No normalization
- No publication
- Not known
- Never published
- Inaccessible
- No repository

GP/FM needs a repository

e-Archiving

Wonca e-archives

Sustainable
data objects

Data objects

- Abstracts
- Thesis
- Books
- Grey literature
- Internet literature
- Video
- Others

GP/FM needs descriptors

ICPC is great

■ But only clinical

■ Family doctor work area and work load need specific descriptors



GP/FM needs descriptors

3CGP/FM

- Aim to describe the content of GP/FM in its non clinical approach.



- Constitutes meta-information on the way the clinics and the patient doctor relationships are driven.



- Crossing ICPC and 3CGP/FM



- Allows documents indexing in GP/FM from clinical and metaclinical points of view

e-Archiving

Business-oriented

GP/FM

Wonca e-archives

Sustainable
data objects

Data objects

- Abstracts
- Thesis
- Books
- Grey literature
- Internet literature
- Video
- Others

Data accessibility (indexation, ie. **ICPC** & **3CGP**)

Aknowledgement of data production in GP/FM

Data production

- Clinical research
- Post-graduate
- GP database
- Research data
- Proceedings
- others

- Clinical research
- Post-graduate
- GP database
- Research data
- Proceedings
- others

- Clinical research
- Post-graduate
- GP database
- Research data
- Proceedings
- others

- Clinical research
- Post-graduate
- GP database
- Research data
- Proceedings
- others

e-Archiving

Business-oriented

GP/FM

Wonca e-archives

Sustainable
data objects

Data objects

- Abstracts
- Thesis
- Books
- Grey literature
- Internet literature
- Video
- Others

Data accessibility (indexation, ie. **ICPC** & **3CGP**)

Data production

- Clinical research
- Post-graduate
- GP database
- Research data
- Proceedings
- others

- Clinical research
- Post-graduate
- GP database
- Research data
- Proceedings
- others

- Clinical research
- Post-graduate
- GP database
- Research data
- Proceedings
- others

- Clinical research
- Post-graduate
- GP database
- Research data
- Proceedings
- others

e-Archiving

Business-oriented

GP/FM

Dissemination

Wonca e-archives

Sustainable
data objects

Data objects

- Abstracts
- Thesis
- Books
- Grey literature
- Internet literature
- Video
- Others

Data accessibility (indexation, ie. **ICPC & 3CGP**)

EBM
QA

Review
Analysis

Guidelines
Others

Clinical use
Training
Research

(Information cycle)

E-archive prototype

- **Knowledge base with editing facilities**
- **Home made product**
- **Data production = Paris 2007 abstracts**
- **Using ICPC for clinical indexing**
- **“Inventing” 3CGP/FM for non clinical concepts**

E-archive prototype : technical specifications

- Hardware : Pentium dual core - 2GB memory RAM
- Application Server: Windows 2003 Enterprise
- Database server: SQL SERVER 2005
- Application framework: .NET 2.0
- Extended application framework: ASP.NET AJAX 1.0
- Development language: C#

E-archive prototype : functionalities

- Create profile
- Submit document
- Advanced search
- Contact us
- ICPC-2 classification
- 3CGPFM classification

[Create profile](#)[Submit document](#)[Advanced search](#)[Contact us](#)[ICPC-2 classification](#)[3CGPFM classification](#)

Wonca abstracts repository project

Submitting, reviewing, indexing, gathering, accessing, retrieving, reading are logical steps for documents flow.

Our project is to elaborate tools to realize those steps or at least some of them for documents published or unpublished in General Practice Family medicine.

This web site gives access to a knowledge base allowing to submit, index and retrieve the abstracts of 998 communications presented during the Wonca Europe Paris 2007 congress

This project is supported in part by a grant of the Wonca International Classification Committee (WICC)

Each abstract has been indexed with [ICPC-2](#) and [3CGP/FM](#), an experimental tool.

This knowledge base will be showed during the Workshop # 502 " Towards e-archive for Wonca document", Friday 19 Oct. 2007, from 9h to 10h30 in room 243, Palais des Congres, Paris

Please feel free to [contact us](#) and to send us your remarks and critics about the project.

Your comments are welcome.

Marc Jamouille, md, mph
Family doctor and Health data management specialist, WICC member
Researcher, Dep of Gen Practice, UCL, Belgium.

Dominique Dekeuster
Information and Communication Technology adviser
Belgium



Language selected: English

[Advanced search](#)

- [Create profile](#)
- [Submit document](#)
- [Advanced search](#)
- [Contact us](#)
- [ICPC-2 classification](#)
- [3CGPFM classification](#)

Advanced search

Context selection

ICPC selection

3CGPFM selection

[Create profile](#)
[Submit document](#)
[Advanced search](#)
[Contact us](#)

[ICPC-2 classification](#)
[3CGPFM classification](#)

Search result

Record(s) found: 12

Context	Id	Abstract Title	ICPC	3CGPFM
Wonca 2007	1172	A perspective of antenatal care in Cukurova	W78	QS12 - QP32
Wonca 2007	15	Audit of Use of Periconceptional Folate in Prevention of Neural Tube Defects in Singapore	W78 - *50	QD31 - QR21
Wonca 2007	580	Defining the first admission time of pregnant patients to obstetrics and gynecology clinic of Ministry of health Ankara training and research hospital and evaluation	W78	QS13 - QP32
Wonca 2007	282	Evaluation of dispeptic and genitourinary symptoms during pregnancy and their relation with laboratory findings	W78 - D87 - U71	QD33
Wonca 2007	1129	Family doctors in Japan with specialist's support can provide maternity care for the most of pregnancy.	W78	QD34 - QC22 - QS13
Wonca 2007	966	Growth from birth to early infancy in offspring prenatally exposed to cigarettes	P17 - W78	QC11 - QD33
Wonca 2007	1094	Influence of 2006 rubella vaccination campaign in immigrant pregnant women serologies	W78 - *44	QS11 - QD4
Wonca 2007	1104	Pregnant undocumented migrants need better access to pregnancy care	W78	QD4 - QP32
Wonca 2007	740	Screening for trisomy 21 in pregnant women: information, consent, satisfaction of patients	W78 - A90	QD42 - QP42 - QE2
Wonca 2007	25	Sexual activity during pregnancy	W78	QP52
Wonca 2007	349	Sociocultural and economical situation of the pregnant patients who admitted to outpatient pregnancy care of ministry of health ankara training and research hospital	W78	QR2
Wonca 2007	731	Why don't GP's appear to be concerned with research? The Diagest 3-GP research	W78	QC22 - QD23 - QR42

[Create profile](#)
[Submit document](#)
[Advanced search](#)
[Contact us](#)
[ICPC-2 classification](#)
[3CGPFM classification](#)

Stands for Core Content Classification of General Practice / Family Medicine and is an authority list (a list of concepts) elaborated by Marc Jamouille and used experimentally

- ⊕ (QC) C Patient's categories
- ⊖ (QD) D Provider (Doctor) issues
 - ⊕ (QD1) Communicator
 - ⊕ (QD2) Caregiver
 - ⊕ (QD3) Care manager
 - ⊖ (QD4) Agent of prevention
 - (QD41) Primary prevention
 - (QD42) Secondary prevention
 - (QD43) Tertiary prevention
 - (QD44) Quaternary prevention
 - (QD5) Complementary medicine
 - (QD6) Medico legal issues
 - (QD7) Professional image & identity
 - (QD8) Health provider personal life
- ⊕ (QE) E Ethics
- ⊕ (QH) H Hazards
- (QO) O Others
- ⊕ (QP) P Patient issues
- ⊕ (QR) R R & D tools
- ⊕ (QS) S Structure of practice
- ⊕ (QT) T Training & Knowledge management

Search abstracts

[Advanced search](#)

[Create profile](#)
[Submit document](#)
[Advanced search](#)
[Contact us](#)

[ICPC-2 classification](#)
[3CGPFM classification](#)

Advanced search

Context selection

Wonca 2007

ICPC selection

Any

Any

3CGPFM selection

QD8 - Health provider personal life

Any

Search

Reset

Chose a
category

Chose
database

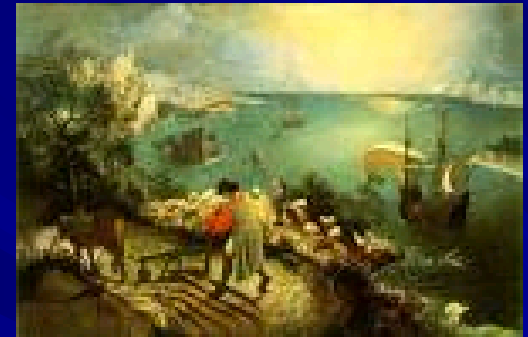
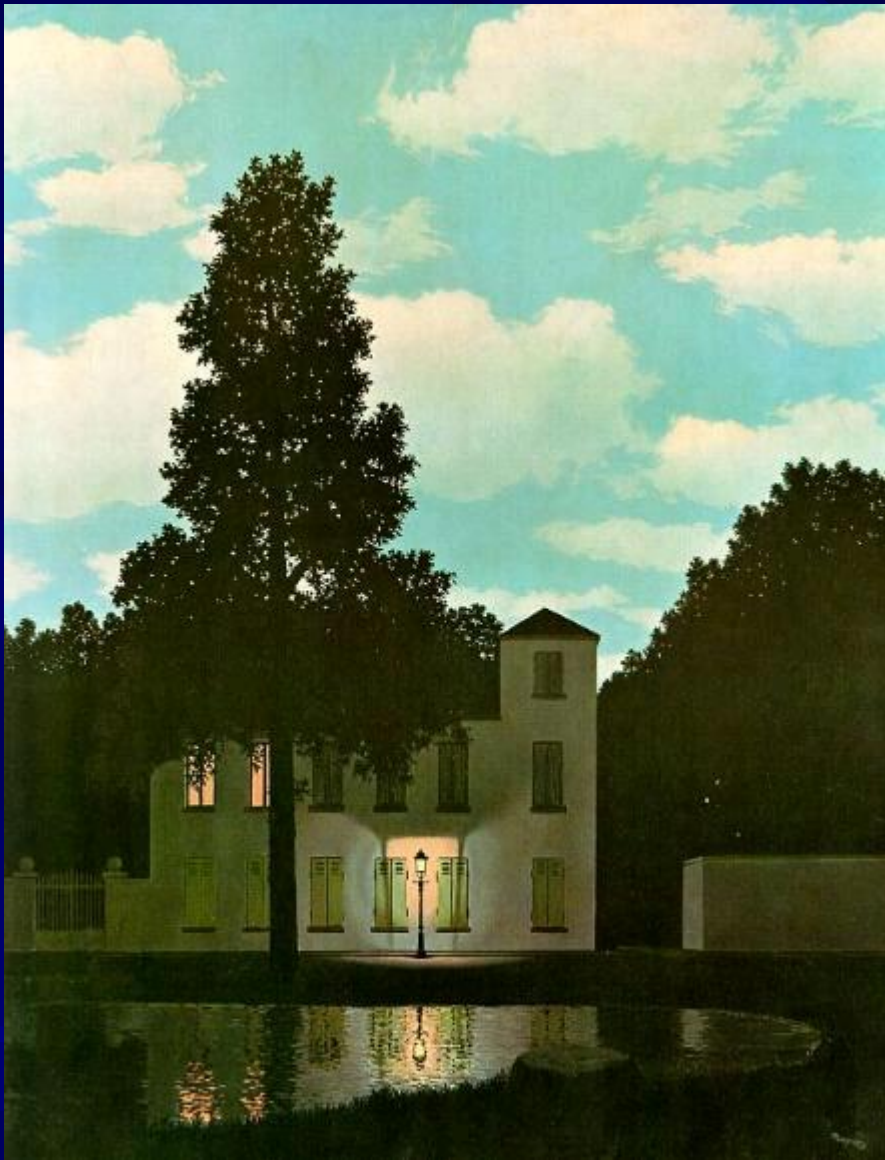
QD8 Health provider personal life

Search result

Record(s) found: 20

Context	Id	Abstract Title	ICPC	3CGPFM
Wonca 2007	1097	Are GPs' feelings of burnout and discontent reflected in the psychological content of their consultations?	P78	QT41 - QT56 - QD8
Wonca 2007	186	Burn-out among parisian gps : a telephone hotline		QD8
Wonca 2007	1013	Burnout among resident family physicians	P78	QD8 - QT42
Wonca 2007	139	Burn-out syndrome among Parisian GPs : what are the expected solutions ?	P74	QD8 - QR2
Wonca 2007	1045	Burnout syndrome among participants of the programme additional training (pat) in family medicine	P78	QD8 - QT42
Wonca 2007	1111	Correctional health care for general practitioners: working circumstances, work satisfaction and burnout	P78	QC13 - QC34 - QD8
Wonca 2007	559	Do we as health care workers folloow the guides for breast cancer and cervical cancer screening	X37 - X41	QT52 - QD8 - QD42
Wonca 2007	602	Gp's burn-out syndrome: prevalence, causes and relevance in general practice.		QD8
Wonca 2007	1101	Gut feelings in general practice: a practical definition		QD8 - QR41
Wonca 2007	1096	Health care and promotion in the family health program in Brazil-report of an experience with a group of diabetes II patients in a brazil rural community	T90	QD8 - QD23 - QR41
Wonca 2007	47	Life quality associated with health of general practitioners – family physicians in southeastern europe		QD33 - QD8
Wonca 2007	430	Living conditions between general practionner women and others professionals women with the same level study : a comparative study		QT41 - QD8 - QR41
Wonca 2007	1110	Lonely hearts in general practice: does psychological distress determine primary health care utilization in patients with heart failure?	K77 - P04	QD8 - QT56
Wonca 2007	846	Overload degree in non oncologic main informal medical trainer		QD8 - QR41
Wonca 2007	264	Prevalence of smoking among health workers at house of health-Tuzla	P17	QD8

Thank you!



Love from Belgium
(Magritte & Breughel painting)