



## An ecosystem-scale perspective of the net land methanol flux: synthesis of micrometeorological flux measurements

G. Wohlfahrt<sup>1,2</sup>, C. Amelynck<sup>3</sup>, C. Ammann<sup>4</sup>, A. Arneth<sup>5</sup>, I. Bamberger<sup>5,6</sup>, A. H. Goldstein<sup>7</sup>, L. Gu<sup>8</sup>, A. Guenther<sup>9</sup>, A. Hansel<sup>10</sup>, B. Heinesch<sup>11</sup>, T. Holst<sup>12</sup>, L. Hörtnagl<sup>6</sup>, T. Karl<sup>13</sup>, Q. Laffineur<sup>14</sup>, A. Neftel<sup>4</sup>, K. McKinney<sup>15</sup>, J. W. Munger<sup>15</sup>, S. G. Pallardy<sup>16</sup>, G. W. Schade<sup>17</sup>, R. Seco<sup>18</sup>, and N. Schoon<sup>3</sup>

<sup>1</sup>Institute of Ecology, University of Innsbruck, Innsbruck, Austria

<sup>2</sup>European Academy of Bolzano, Bolzano, Italy

<sup>3</sup>Belgian Institute for Space Aeronomy, Brussels, Belgium

<sup>4</sup>Research Station Agroscope, Climate and Air Pollution Group, Zurich, Switzerland

<sup>5</sup>Karlsruhe Institute of Technology, IMK-IFU, Garmisch-Partenkirchen, Germany

<sup>6</sup>Institute of Agricultural Sciences, ETH Zurich, Zurich, Switzerland

<sup>7</sup>Department of Environmental Science, Policy, and Management, University of California, Berkeley, CA, USA

<sup>8</sup>Environmental Sciences Division, Oak Ridge National Laboratory, Oak Ridge, TN, USA

<sup>9</sup>Atmospheric Sciences and Global Change Division, Pacific Northwest National Laboratory, Richland, WA, USA

<sup>10</sup>Institute of Ion Physics and Applied Physics, University of Innsbruck, Innsbruck, Austria

<sup>11</sup>Exchanges Ecosystems-Atmosphere, Department Biosystem Engineering (BIOSE), University of Liege, Gembloux, Belgium

<sup>12</sup>Department of Physical Geography and Ecosystem Science, Lund University, Lund, Sweden

<sup>13</sup>Institute of Meteorology and Geophysics, University of Innsbruck, Innsbruck, Austria

<sup>14</sup>Royal Meteorological Institute, Brussels, Belgium

<sup>15</sup>School of Engineering and Applied Sciences, Harvard University, Cambridge, MA, USA

<sup>16</sup>Department of Forestry, University of Missouri, Columbia, MO, USA

<sup>17</sup>Department of Atmospheric Sciences, Texas A&M University, College Station, TX, USA

<sup>18</sup>Department of Earth System Science, University of California, Irvine, CA 92697, USA

Correspondence to: G. Wohlfahrt (georg.wohlfahrt@uibk.ac.at)

Received: 23 December 2014 – Published in Atmos. Chem. Phys. Discuss.: 27 January 2015

Revised: 23 May 2015 – Accepted: 22 June 2015 – Published: 09 July 2015

**Abstract.** Methanol is the second most abundant volatile organic compound in the troposphere and plays a significant role in atmospheric chemistry. While there is consensus about the dominant role of living plants as the major source and the reaction with OH as the major sink of methanol, global methanol budgets diverge considerably in terms of source/sink estimates, reflecting uncertainties in the approaches used to model and the empirical data used to separately constrain these terms. Here we compiled micrometeorological methanol flux data from eight different study sites and reviewed the corresponding literature in order to provide a first cross-site synthesis of the terrestrial ecosystem-scale methanol exchange and present an independent data-driven

view of the land–atmosphere methanol exchange. Our study shows that the controls of plant growth on production, and thus the methanol emission magnitude, as well as stomatal conductance on the hourly methanol emission variability, established at the leaf level, hold across sites at the ecosystem level. Unequivocal evidence for bi-directional methanol exchange at the ecosystem scale is presented. Deposition, which at some sites even exceeds methanol emissions, represents an emerging feature of ecosystem-scale measurements and is likely related to environmental factors favouring the formation of surface wetness. Methanol may adsorb to or dissolve in this surface water and eventually be chemically or biologically removed from it. Management activi-

ties in agriculture and forestry are shown to increase local methanol emission by orders of magnitude; however, they are neglected at present in global budgets. While contemporary net land methanol budgets are overall consistent with the grand mean of the micrometeorological methanol flux measurements, we caution that the present approach of simulating methanol emission and deposition separately is prone to opposing systematic errors and does not allow for full advantage to be taken of the rich information content of micrometeorological flux measurements.

## 1 Introduction

Methanol ( $\text{CH}_3\text{OH}$ ) is, on average, the second most abundant volatile organic compound (VOC) in the troposphere (e.g. Jacob et al., 2005) and often the most abundant one regionally (e.g. Seco et al., 2011), with typical mole fractions in the continental boundary layer of  $1\text{--}10\text{ nmol mol}^{-1}$  (Heikes et al., 2002). With an atmospheric lifetime of  $5\text{--}12$  days (Jacob et al., 2005), methanol has been shown to play a role in modulating the presence of oxidants in the upper troposphere (Tie et al., 2003). It affects atmospheric chemistry as an atmospheric source of formaldehyde (Palmer et al., 2003) and carbon monoxide (Duncan et al., 2007). Model calculations suggest methanol emissions constitute 10 % of the total global biogenic non-methane VOC (BVOC) emissions, the second highest single-compound contribution after isoprene (Guenther et al., 2012).

The primary source of atmospheric methanol is emissions from living plants, followed by smaller source contributions from the decay of dead plant matter, biomass burning, and direct emissions from anthropogenic activities, the ocean and atmospheric production (Seco et al., 2007). On a regional scale, dairy farming and industrial activities are important sources as well (e.g. Gentner et al., 2014). The major sink for methanol is oxidation by OH radicals, followed by dry and wet deposition to land and ocean. Estimates of the global land net flux, i.e. the balance between sources and sinks of methanol on land, vary widely between  $75$  and  $245\text{ Tg yr}^{-1}$  (Singh et al., 2000; Galbally and Kirstine, 2002; Heikes et al., 2002; Tie et al., 2003; von Kuhlmann et al., 2003a, b; Millet et al., 2008; Stavrou et al., 2011), although more recent estimates converge to a more narrow range of  $75\text{--}108\text{ Tg yr}^{-1}$  (Jacob et al., 2005; Millet et al., 2008; Stavrou et al., 2011).

Much of the knowledge and data embedded into the parameterisation of plant methanol emissions derives from work at the leaf level (Galbally and Kirstine, 2002; Guenther et al., 2012). In living plants, methanol is produced as a byproduct of pectin metabolism during cell wall synthesis (Fall and Benson, 1996) and thus methanol production and emission are positively correlated with plant growth (Custer and Schade, 2007; Hüve et al., 2007) and pectin content (Galbally and Kirstine, 2002). This circumstance led Galbally and Kirstine (2002) to simulate global methanol emissions as a

function of net primary productivity (NPP) that consists of pectin and the fraction thereof which is demethylated during growth, an approach which has since been adopted by others (Jacob et al., 2005; Millet et al., 2008). Most other global budgets rely on the MEGAN model (Guenther et al., 1995, 2012) to simulate methanol emissions using light- and temperature-driven algorithms. While lacking a sound physiological basis, the latter approach is successful in simulating observed variations in methanol emissions due to the fact that methanol emissions are strongly controlled by stomatal conductance, reflecting its low Henry constant (Niinemets and Reichstein, 2003; Harley et al., 2007). Stomatal conductance, in the absence of soil water limitations, tracks diurnal variations in light and temperature, which in turn correlate with diurnal methanol emissions (e.g. Hörtnagl et al., 2011).

The deposition of methanol in global models is typically represented in a very simplistic fashion using fixed deposition velocities. These vary by up to a factor of 4 between different studies (e.g. Galbally and Kirstine, 2002; Millet et al., 2008) and are often, constrained by observed atmospheric concentrations, tuned to close the atmospheric budget. Recently, several studies have reported significant methanol deposition to terrestrial ecosystems and/or clear evidence of bidirectional exchange (Misztal et al., 2011; Schade et al., 2011; Laffineur et al., 2012). The observed deposition has been related to high ambient methanol mole fractions downwind of industrial methanol sources (Laffineur et al., 2012), the presence of water films in the plant canopy or soil within which methanol may adsorb/dissolve and can be removed by chemical transformations (Laffineur et al., 2012) and/or methylotrophic bacteria (Fall and Benson, 1996; Abanda-Nkpwatt et al., 2006).

In summary, while there is consensus about the dominant role of living plants as the major source and the reaction with OH radicals as the major sink of methanol, global methanol budgets diverge considerably in terms of source/sink estimates (Jacob et al., 2005), reflecting uncertainties in the approaches used in models and the empirical data used to separately constrain the source/sink terms.

Micrometeorological methods allow measurements of the net exchange of mass, energy and momentum between the underlying surface and the atmosphere over the spatial scale of typically hundreds of metres (Baldochi et al., 1988). Thanks to advances in proton-transfer-reaction mass spectrometry, a fast and sensitive analytical method to determine methanol mole fractions in ambient air in real time during the past decade (Karl et al., 2001, 2002; Müller et al., 2010), ecosystem-scale methanol flux measurements have been reported from multiple sites and in a few cases over multiple seasons (Tables 1 and 2). Because micrometeorological flux measurements allow quantification of the net flux of methanol between ecosystems and the atmosphere quasi-continuously and over extended periods of time, they are ideal for assessing the performance of models at the ecosys-

**Table 1.** General characterisation of the study sites (see Table S1 for further details on experimental setup).

	Blodgett Forest (BF)	Missouri Ozark (MO)	Harvard Forest (HF)	Vielsalm (VA)	Oensingen-INT (OS-INT)	Oensingen-EXT (OS-EXT)	Neustift (NS)	Stordalen Mire (SD)
Country	USA	USA	USA	Belgium	Switzerland	Switzerland	Austria	Sweden
Latitude	38.89° N	38.76° N	42.54° N	50.30° N	47.28° N	47.28° N	47.12° N	68.33° N
Longitude	120.63° W	92.16° W	72.17° W	5.98° E	7.73° E	7.73° E	11.32° E	19.05° E
Elevation (m)	1315	216	340	450	450	450	970	351
MAP (mm)	1290	1110	1066	1000	1100	1100	852	304
MAT (°C)	9.0	13.6	7.8	7.5	9.0	9.0	6.5	−0.7
Climate	Mediterranean	Temperate continental	Temperate	Temperate maritime	Temperate continental	Temperate continental	Temperate alpine	Boreal
Plant functional type	Coniferous evergreen forest	Deciduous broadleaf forest	Mixed forest	Mixed forest	Grassland	Grassland	Grassland	Wetland
Management	Understory cut	–	–	–	Harvest	Harvest	Harvest	–
LAI (m <sup>2</sup> m <sup>−2</sup> )	1–1.7	1.3–4.0	4.8–5.4	2.6–3.8	0.4–3.5	0.2–5.1	0.2–7.8	up to 3.5
Measurement/avg. canopy height (m)	11/5	32/22	30/23	52/30	1.2/0.15	1.2/0.2	2.5/ < 1.0	2.95/ < 0.5
Data coverage, days of year (year)	142–170 (1999)	125–296 (2012)	149–248 (2007)	182–304 (2009) 60–273 (2010) 91–334 (2011)	176–213 (2004)	158–175 (2004) 214–249 (2004)	143–325 (2008) 78–305 (2009) 77–346 (2011) 87–330 (2012)	121–273 (2006) 121–260 (2007)
Flux method	REA	vDEC	vDEC	vDEC	vDEC	vDEC	vDEC	vDEC
Key reference	Schade and Goldstein (2001)	Seco et al. (2015)	McKinney et al. (2011)	Laffineur et al. (2012)	Brunner et al. (2007)	Brunner et al. (2007)	Hörtnagl et al. (2011)	Holst et al. (2010)

Abbreviations: MAP, mean annual precipitation; MAT, mean annual temperature; LAI, leaf area index.

tem scale. Up to now, however, few (if any) studies have made use of this rich data source in a more holistic fashion.

The main objective of this study is thus (i) to compile the available ecosystem-scale methanol exchange data from micrometeorological flux measurements, (ii) to conduct a first cross-site synthesis of the magnitude of and controls on the terrestrial net ecosystem methanol exchange and (iii) to provide an independent constraint on the land methanol exchange against which models can be compared.

## 2 Methods

In total, growing season data from eight sites in the Northern Hemisphere were available for the present synthesis (Table 1). Key metrics of micrometeorological methanol flux measurements from additional sites were obtained from a literature survey (Table 2). The climate space covered the Mediterranean to the boreal climate zone, with mean annual temperatures ranging from −0.7 to +9.0 °C; however, most of the sites (six) were located in the temperate climate zone. The study sites comprised four forests, three managed grasslands and one wetland.

The net ecosystem methanol exchange was determined by means of the virtual disjunct eddy covariance (vDEC) method (Karl et al., 2002) at seven sites and by the relaxed eddy accumulation (REA) method at one site. With the vDEC method, as with the “true” eddy covariance method (Baldocchi et al., 1988), measurements of the three-

dimensional wind vector by means of sonic anemometers are made at high temporal resolution (50–100 ms). Methanol mole fractions are measured at disjunct time intervals separated typically by 1–3 s with integration times of 100–500 ms (Table S1 in the Supplement). As shown by Hörtnagl et al. (2010), the vDEC method increases random variability compared to the true eddy covariance method but does not result in a systematic bias. This was confirmed by a direct comparison between vDEC and true eddy covariance methanol flux measurements by Müller et al. (2010). Methanol mole fractions were measured with proton-transfer-reaction mass spectrometers (PTR-MS) on mass-to-charge ratio ( $m/z$ ) 33 (see Hansel et al., 1995; Lindinger et al., 1998; and Graus et al., 2010, for more details on the PTR-Q-MS and PTR-TOF-MS technology). The PTR-MS instruments were typically housed in a sheltered location some distance away from or at the bottom of the instrument tower supporting the sonic anemometer. Air was pumped from an inlet close to the sonic anemometer to the PTR-MS through an inlet line, which was designed to minimise interactions between the tubing material and methanol (i.e. through use of inert materials and heating). Further details on the study sites, instrumentation and experimental protocols are given in Tables 1 and S1 and the references cited therein. In contrast to the eddy covariance CO<sub>2</sub> flux community (Baldocchi, 2003), which has made considerable progress in standardising flux measurement protocols (Mauder and Foken, 2006), little effort has been made in the (much smaller) VOC flux community to

**Table 2.** Literature survey of micrometeorological methanol flux studies and the net land methanol flux derived from global budget studies compared to the results of the present study.

	Vegetation type	Method	Methanol flux ( $\text{nmol m}^{-2} \text{s}^{-1}$ )					$V_d^a$ ( $\text{cm s}^{-1}$ )
			Average	SD	Median	Maximum	Minimum	
Ecosystem-scale studies								
Schade and Custer (2004)	Bare agricultural soil	EC				4.6	0.0	0.1–0.4
Custer and Schade (2007)	Rye grass	EC	0.22	0.22	0.1	1.5	−0.6	~0.1
Warneke et al. (2002)	Alfalfa crop	DEC	4.7			34.7	0.0	
Schade et al. (2011)	Deciduous forest	REA				5.0	−3.6	1.1
Karl et al. (2003)	Mixed deciduous forest	vDEC	6.1			19.9	−1.7	
Spirig et al. (2005)	Mixed deciduous forest	vDEC				4.0	−1.1	
Baker et al. (2001)	Coniferous forest	REA				56.0	−12.0	
Karl et al. (2005)	Coniferous forest	vDEC	2.8	0.9				1.0
Rinne et al. (2007)	Coniferous forest	vDEC	1.4			3.7	0.1	
Park et al. (2014)	Pine forest	vDEC	4.2					
Karl et al. (2004)	Tropical rainforest	vDEC				4.8	−0.9	0.3
Langford et al. (2010a)	Tropical rainforest	vDEC	−0.3	2.6	−0.6			
Davison et al. (2009)	Mediterranean macchia	vDEC			3.7			
Park et al. (2013)	Orange orchard	EC	1.7					
Fares et al. (2012)	Citrus orchard	vDEC			0.26–2.74	10.0	−5.0	
Brilli et al. (2014)	SRC poplar plantation	EC	1.4		1.0			
Misztal et al. (2011)	Oil palm plantation	vDEC	−0.4	0.9	−0.2	3.0	−3.1	
Velasco et al. (2005)	Urban	vDEC	9.0					
Langford et al. (2009)	Urban	(v)DEC	4.7	6.2	4.3			
Velasco et al. (2009)	Urban	vDEC	12.8	6.3				
Langford et al. (2010b)	Urban	vDEC	8.3	8.1	8.2			
Global average net land flux <sup>b</sup>								
Heikes et al. (2002)			1.8					0.4
Galbally and Kirstine (2002)			0.7					0.1
Tie et al. (2003)			1.3					
Jacob et al. (2005)			0.8					0.2
Millet et al. (2008)			0.6					0.4
Stavrakou et al. (2011)			0.6					
This study								
Blodgett Forest	Coniferous forest	REA	23.9	36.9	11.3	228.7	−23.1	1.8
Missouri Ozark	Deciduous forest	vDEC	0.9	2.1	0.5	16.2	−9.0	0.3
Harvard Forest	Mixed deciduous forest	vDEC	0.7	1.5	0.3	9.5	−2.5	1.0
Vielsalm	Mixed deciduous forest	vDEC	−0.1	2.2	−0.1	19.3	−20.7	1.9
Oensingen-INT <sup>c</sup>	Grassland	vDEC	1.7(1.9)	2.0(2.6)	1.0(1.1)	12.4(29.8)	−1.5(−1.5)	0.1
Oensingen-EXT <sup>c</sup>	Grassland	vDEC	2.8(4.4)	3.1(9.0)	1.7(2.0)	18.4(110.9)	−2.9(−6.3)	0.2
Neustift <sup>c</sup>	Grassland	vDEC	1.5(1.8)	2.1(4.2)	0.8(0.8)	22.1(155.1)	−9.7(−9.7)	0.5
Stordalen	Wetland	vDEC	0.2	0.6	0.2	4.2	−1.5	0.7

<sup>a</sup> Average night-time deposition velocity. <sup>b</sup> The net land flux was derived by summing emissions from plants, decay of plant matter, biomass burning, anthropogenic activities and subtracting dry and wet deposition to land, dividing by the land area ( $133.8 \times 10^{12} \text{ m}^2$ ) and converting from mass to molar basis using  $32 \text{ g mol}^{-1}$ . <sup>c</sup> Values in parentheses include data influenced by site management events.

standardise measurement protocols. In the present study we have decided to use the data from the different sites as they are, with measurements, processing and quality control as described in the key references in Table 1. We acknowledge that this approach potentially introduces systematic bias among sites. As shown in Table S1 in the Supplement, there are necessarily large differences in the air sampling systems due to different canopy and tower heights, but the PTR-MS setups were remarkably similar.

At the Blodgett Forest study site, methanol exchange was determined with the relaxed eddy accumulation (REA)

method by sampling up- and downdraughts of air into separate reservoirs (cooled activated carbon microtraps), which were analysed immediately after collection using a gas chromatography flame ionisation detector technique (Schade and Goldstein, 2001). Even though the REA method is a less direct method than the vDEC (Hewitt et al., 2011), the data from Blodgett Forest were included in the present analysis because several studies demonstrated good correspondence between VOC fluxes measured concurrently by the REA and the eddy covariance method (e.g. Westberg et al., 2001; Lee et al., 2005).

Additional auxiliary data included concurrent measurements of the major environmental drivers, including air temperature and humidity, horizontal wind speed, incident photosynthetically active radiation and precipitation above the canopy and soil temperature and water content in the near-surface soil. In addition we collected above-canopy net ecosystem carbon dioxide exchange (NEE), which was measured at each site within the framework of the FLUXNET project (Baldocchi et al., 2001; Baldocchi, 2003), and derived therefrom gross photosynthesis (GPP) and ecosystem respiration (Reichstein et al., 2005).

Data were combined into a common format and analysed with SPSS version 19. Statistical analysis was performed, unless stated otherwise, on the quality-filtered half-hourly data.

### 3 Results and discussion

#### 3.1 Magnitude of methanol exchange

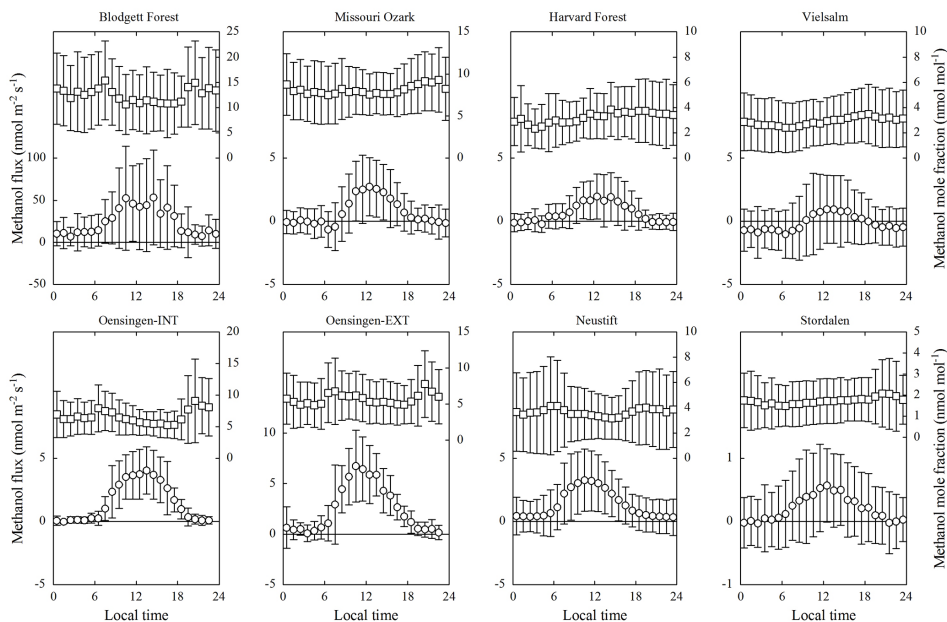
The eight investigated study sites, as shown in Figs. 1 and 2 and Table 2, showed quite contrasting methanol exchange rates; however, they also exhibited common features: all study sites showed both net emission and net deposition of methanol (Fig. 2) and methanol fluxes exhibited a more or less pronounced average diurnal pattern (Fig. 1), in phase with the diurnal course of incident radiation and air temperature (Fig. S1 in the Supplement). Flux magnitudes were, however, quite different: by far the largest net emissions were observed at Blodgett Forest, whose average methanol emissions ( $23.9 \text{ nmol m}^{-2} \text{ s}^{-1}$ ) exceeded those of the other sites by a factor of 10 and more (Table 2). The three grasslands, excluding periods following management activities, were characterised by average net emission rates of  $1.5\text{--}2.8 \text{ nmol m}^{-2} \text{ s}^{-1}$ . Management, harvesting and the application of organic fertiliser caused methanol emissions from the grasslands to increase by an order of magnitude during the day of the management intervention and remain elevated a few days thereafter, before fluxes returned back to previous values (Fig. 3). These were followed by the Missouri Ozark and Harvard Forest mixed forest sites ( $0.7\text{--}0.9 \text{ nmol m}^{-2} \text{ s}^{-1}$ ). The lowest average methanol fluxes were measured at the wetland site of Stordalen ( $0.2 \text{ nmol m}^{-2} \text{ s}^{-1}$ ) and the mixed forest of Vielsalm. The latter was in fact characterised by a negative average flux ( $-0.1 \text{ nmol m}^{-2} \text{ s}^{-1}$ ) – i.e. methanol deposition exceeded emissions at this site.

From a comparison with the other seven study sites (Fig. 2) and the literature (Table 2) it becomes clear that the emissions observed at Blodgett Forest are exceptionally high, even compared to elevated emissions observed over agricultural crops and grasslands after harvesting or the application of organic fertiliser (e.g. Brunner et al., 2007; Davison et al., 2008; Hörtnagl et al., 2011; Ruuskanen et al., 2011; Brillli et al., 2012). Schade and Goldstein (2001) attributed these high emissions to the cutting of shrubs in the understory, such as

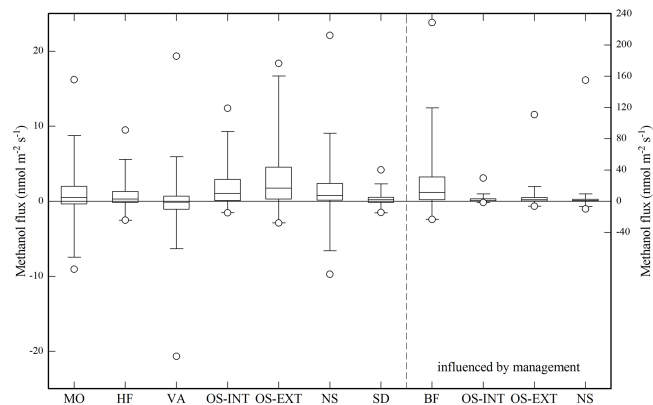
manzanita, of the site prior to the measurements, as part of a regular forest plantation management intervention. The cut plant material was left at the site and may have caused the elevated methanol emissions, similar to what was observed at the grassland sites after harvesting (Fig. 3). In contrast to the grassland sites, where these emissions were confined to less than 3 days after harvesting (Fig. 3) and cuttings were removed later, elevated emissions at Blodgett Forest were sustained. Bouvier-Brown et al. (2012) noted that measurements in subsequent years showed lower fluxes by a factor of 2–3. Park et al. (2014), who measured BVOC fluxes at Blodgett Forest 10 years later with the vDEC method, reported an average methanol flux of  $4.2 \text{ nmol m}^{-2} \text{ s}^{-1}$ , which is comparable in magnitude with the results from the other sites of this study and non-urban sites in the literature (Table 2). Park et al. (2014) also measured vDEC 2-methyl-3-butene-2-ol (MBO) fluxes, which agreed with the corresponding REA flux estimates measured in 1999 concurrently with the methanol fluxes by Schade and Goldstein (2001). We are thus confident that the observed large emissions at Blodgett forest likely reflected the recent disturbance of the site.

Large net deposition fluxes of methanol, and even sites that represent net methanol sinks over extended periods of time, have not been reported in the literature until very recently (Langford et al., 2010a; Misztal et al., 2011; Schade et al., 2011; Laffineur et al., 2012). The present study confirms that net deposition of methanol is a common phenomenon (Table 2), and it is observed at half of the study sites for more than 25 % of the time (Fig. 2). Laffineur et al. (2012) developed a theoretical framework to simulate methanol exchange at Vielsalm and showed that the bi-directional nature of methanol exchange can be explained by adsorption/desorption of methanol in water films within the ecosystem (aided by the low Henry constant of methanol) and a postulated sink process. While the latter had to be invoked in order to make the model match the sustained deposition fluxes, it is well established that methylotrophic bacteria inhabit plant surfaces and soils (Conrad, 1996; Fall and Benson, 1996; Conrad and Claus, 2005; Kolb, 2009; Stacheter et al., 2013) and may significantly reduce net leaf and ecosystem methanol emissions (Abanda-Nkpwatt et al., 2006).

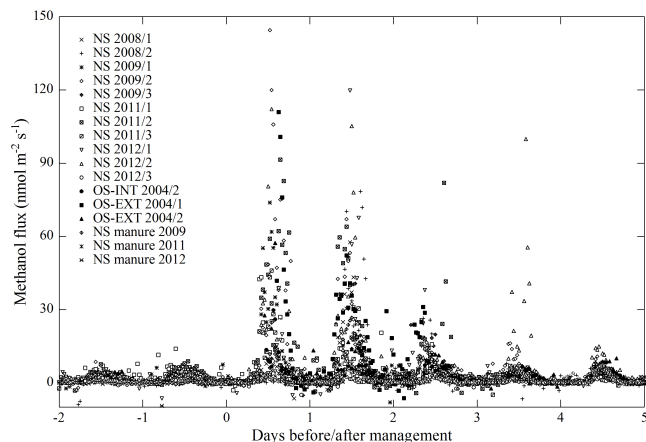
After excluding data from Blodgett Forest and the grassland data influenced by management activities, we calculate a “grand mean” of  $1 \text{ nmol m}^{-2} \text{ s}^{-1}$  as the average of the methanol fluxes of all sites in this study. Assuming the Earth’s ice-free land area ( $133.8 \times 10^{12} \text{ m}^2$ ) to emit methanol at this average rate year-round, which is an overestimation due to off-season fluxes being typically much lower than the growing season data compiled in this study (Bamberger et al., 2014), a global net land methanol flux of  $135 \text{ Tg yr}^{-1}$  can be extrapolated. This value falls into the middle of the range of available global budget studies ( $75\text{--}245 \text{ Tg yr}^{-1}$ ; Table 2) and is quite close to the  $75\text{--}108 \text{ Tg yr}^{-1}$  range of budgets published after 2005 (Jacob et al., 2005; Millet et al., 2008;



**Figure 1.** Hourly bin-averaged diurnal variation of methanol fluxes (circles; left y axis) and mole fractions (squares; right y axis) at the eight study sites (error bars represent  $\pm 1$  standard deviation). Note the differing scaling on the y axis. Data from Oensingen-INT, Oensingen-EXT and Neustift are exclusive of periods influenced by management practices.



**Figure 2.** Box plots of methanol fluxes at the eight study sites. The left y axis refers to sites/measurements not influenced by site management events, while the right y axis (note differing scaling) shows data for Blodgett Forest and the grassland sites inclusive of measurements during/after management (MO: Missouri Ozark; HF: Harvard Forest; VA: Vielsalm; OS-INT: Oensingen – intensive; OS-EXT: Oensingen – extensive; NS: Neustift; SD: Stordalen; BF: Blodgett Forest). Box plots show minima/maxima (circles), 5 and 95% quartiles (whiskers), the interquartile range (box) and the median (horizontal line).

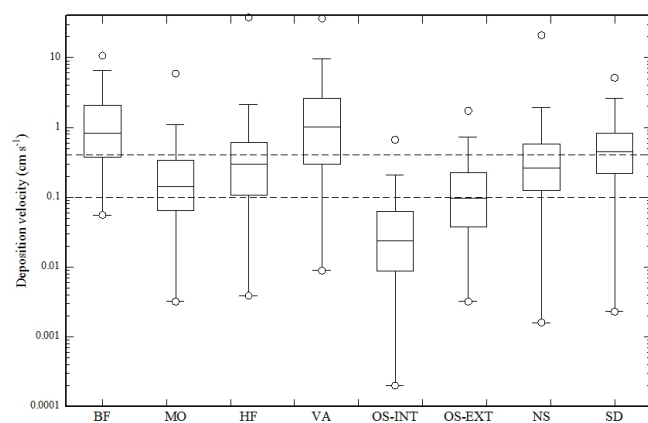


**Figure 3.** Effect of management (harvest and manure application) on methanol fluxes of grassland study sites Neustift (NS), Oensingen-INT (OS-INT) and Oensingen-EXT (OS-EXT) within indication of study year and, where applicable, number of harvest.

Stavrakou et al., 2011). In addition to a likely warm-season bias, globally important ecosystems, such as tropical forests, are under-represented in our study, and included sites are likely not representative of pectin contents elsewhere (Custer

and Schade, 2007). We thus stress the large uncertainties associated with this simplistic upscaling.

Observed night-time net deposition velocities (medians) ranged between  $0.02$  and  $1.0 \text{ cm s}^{-1}$ , with five of the eight sites bracketing the range of  $0.1$ – $0.45 \text{ cm s}^{-1}$  (Fig. 4). Including daytime deposition flux measurements did not substantially change these ranges (compare Fig. 4 with Fig. S2). These values are consistent with night-time deposition velocities reported in the literature (Table 2) and overlap with the



**Figure 4.** Box plots of night-time methanol deposition velocities at the eight study sites. Horizontal dashed lines indicate the range of deposition velocities ( $0.1\text{--}0.4\text{ cm s}^{-1}$ ) used in global budgets (see also Table 2). Box plots show minima/maxima (circles), 5 and 95 % quartiles (whiskers), the interquartile range (box) and the median (horizontal line).

range of fixed deposition velocities of  $0.1\text{--}0.4\text{ cm s}^{-1}$  used in global methanol budgets (Singh et al., 2000; Galbally and Kirstine, 2002; Heikes et al., 2002; von Kuhlmann et al., 2003a, b; Jacob et al., 2005; Millet et al., 2008). Due to the concurrent emission and deposition of methanol, these observed deposition velocities represent “net” deposition velocities, while values used in global budget studies are “gross” deposition velocities. Because the former are lower than the latter if there is any concurrent emission of methanol, this suggests that global models may be underestimating land deposition velocities and thus, provided that models correctly reproduce atmospheric concentrations, may be underestimating methanol sources to a similar degree.

Methanol mole fractions at the height of the flux measurements (Table 1) exhibited relatively little diurnal variability, with a tendency towards minima during daylight periods and the afternoon (Fig. 1). The highest (median) mole fractions were found at Blodgett Forest ( $11.6\text{ nmol mol}^{-1}$ ), whereas the lowest were found at Stordalen ( $1.4\text{ nmol mol}^{-1}$ ), consistent with the range of  $1\text{--}10\text{ nmol mol}^{-1}$  reported by Heikes et al. (2002) for the continental boundary layer. Overall, mole fractions correlated positively with methanol fluxes across sites ( $r^2 = 0.69$ ,  $p = 0.011$ ), i.e. higher ambient mole fractions were associated with larger net emissions.

### 3.2 Controls on methanol exchange

In order to investigate the controls on methanol exchange, a multiple linear regression analysis was conducted for each site, separating the flux data by their sign, i.e. into net deposition and net emission (Table 3).

Methanol emission scaled positively with incident photosynthetically active radiation and evapotranspiration, and these two independent variables explained the highest frac-

tion of the variance ( $0.17 < r^2 < 0.62$ ;  $p < 0.001$ ) at most sites. We interpret this to indicate the strong stomatal control of methanol exchange, owing to the low Henry constant which favours leaf-internal partitioning of methanol to the liquid phase (Niinemets and Reichstein, 2003), rather than a light effect, since Oikawa et al. (2011b) have shown that methanol emissions are not directly affected by light.

GPP and air temperature, which explained 7 to 43 % ( $p < 0.001$ ) of the variability at the individual sites (Table 3), were positively related to methanol emissions, which we interpret to indicate a general relationship of these two variables with plant growth and thus methanol production. GPP provides assimilates for growth, and temperature tightly controls cell division and enzyme reaction rates. While this results in correlations between methanol emission and these factors, actual methanol production has been shown to be more complex (Harley et al., 2007; Oikawa et al., 2011a), and these relationships should thus be viewed as phenomenological. Galbally and Kirstine (2002) were the first to link plant growth and methanol emissions in a global budget by assuming proportionality with NPP. Here we use GPP, which equals NPP plus autotrophic respiration, as an alternative proxy for plant growth that was generally available in the present data set, and the corresponding relationships with net methanol fluxes are shown in Fig. 5 (Fig. S3 in the Supplement shows the relationships with the net ecosystem  $\text{CO}_2$  exchange). Slopes of linear regressions (forced through the origin, excluding Blodgett Forest and grassland data affected by management activities) ranged between  $3.5 \times 10^{-5}\text{ g C-CH}_3\text{OH g C-GPP}^{-1}$  (Vielsalm) and  $2.5 \times 10^{-4}\text{ g C-CH}_3\text{OH g C-GPP}^{-1}$  (Oesingen-EXT), with an average of  $1.25 \times 10^{-4}\text{ g C-CH}_3\text{OH g C-GPP}^{-1}$ .

Taking the most recent global GPP value ( $123\text{ Pg C yr}^{-1}$ ) from Beer et al. (2010), this yields a net land methanol flux of  $41\text{ Tg yr}^{-1}$ , which is about half of the lowest estimates available from global budgets (Millet et al., 2008; Stavrakou et al., 2011). Accounting for the positive y offset (i.e. not forcing the regression through the origin) observed at most sites (Fig. 5) or filtering data for positive methanol fluxes increases the above number by only 20 % (data not shown). Making the assumption that NPP amounts to around 50 % of GPP (Waring et al., 1998; Zhang et al., 2009) approximately doubles the average number quoted above. Compared to the range of  $3.5\text{--}5.3 \times 10^{-4}\text{ g C-CH}_3\text{OH g C-NPP}^{-1}$  deduced from the literature (Galbally and Kirstine, 2002; Millet et al., 2008; Stavrakou et al., 2011), our values of NPP lost as net land methanol flux are thus lower by about a factor of 2. As shown in Fig. 6, an inverse relationship between the fraction of GPP that was lost as net methanol emission and the median night-time deposition velocities was observed, with an exponential fit explaining 77 % of the variability between sites (excluding data from Blodgett Forest). In contrast, no significant correlation between the ratio of net methanol flux to GPP was found with GPP itself (data not shown), suggesting no relationship between site productivity and the fraction of GPP that is lost



**Table 3.** Pearson correlation coefficients of multiple linear regressions of half-hourly methanol emission and deposition fluxes as a function of several independent variables (PAR: photosynthetic photon flux density; RH: relative air humidity; TA: air temperature; SWC soil water content;  $u_*$ : friction velocity; ET: evapotranspiration; GPP: gross primary productivity; TSEOP: time since end of precipitation;  $n$ : number of measurements).

	Emission							
	BF	MO	HF	VA	OS-INT <sup>a</sup>	OS-EXT <sup>a</sup>	NS <sup>a</sup>	SD
PAR	0.43***	0.6***	0.65***	0.51***	0.79***	0.78***	0.69***	0.54***
RH	−0.17***	−0.39***	−0.55***	−0.45***	−0.5***	−0.23***	−0.44***	−0.45***
TA	0.28***	0.45***	0.65***	0.36***	0.45***	0.31***	0.59***	0.31***
SWC	−0.24***	−0.11***	0.17*	0.14***	−0.09*	0.02 ns	−0.29***	NA
$u_*$	0.48***	0.5***	0.51***	0.45***	0.48***	0.27***	0.34***	0.09***
ET	0.42***	0.44***	0.62***	0.5***	0.79***	0.74***	0.7***	0.54***
GPP	0.46***	0.27***	0.48***	0.38***	0.55***	0.62***	0.6***	0.29***
TSEOP	−0.14***	0.1***	−0.03 ns	0.15***	−0.03 ns	0.04 ns	−0.05***	0.1***
$n$	396	1519	156	3767	418	447	15 697	1179
	Deposition							
	BF	MO	HF	VA	OS-INT <sup>a</sup>	OS-EXT <sup>a</sup>	NS <sup>a</sup>	SD
PAR	−0.15 ns	−0.29***	−0.09 ns	−0.11***	−0.54***	−0.02 ns	−0.17***	−0.02 ns
RH	0.33***	−0.11***	0.28*	−0.22***	0.18 ns	−0.19 ns	0.27***	−0.07*
TA	−0.03 ns	−0.02 ns	−0.11 ns	−0.16***	−0.22*	0.14 ns	−0.32***	−0.17***
SWC	0.17 ns	−0.03 ns	−0.12 ns	−0.13***	0.09 ns	−0.03 ns	0.19***	NA
$u_*$	−0.3***	−0.46***	0.02 ns	−0.44***	−0.28***	−0.06 ns	−0.39***	−0.28***
ET	−0.12 ns	−0.29***	−0.1 ns	−0.16***	−0.46***	0.05 ns	−0.17***	−0.11***
GPP	−0.17 ns	−0.23***	−0.15 ns	−0.14***	−0.51***	−0.1 ns	−0.18***	−0.08 *
TSEOP	−0.18 ns	0.1***	−0.01 ns	0.22***	−0.09 ns	−0.06 ns	−0.03 ns	0.03 ns
$n$	65	978	64	4917	72	45	1930	673

<sup>a</sup> Excluding data influenced by site management; \*  $p < 0.05$ ; \*\*  $p < 0.01$ ; \*\*\*  $p < 0.001$ ; ns: not significant; NA: not available.

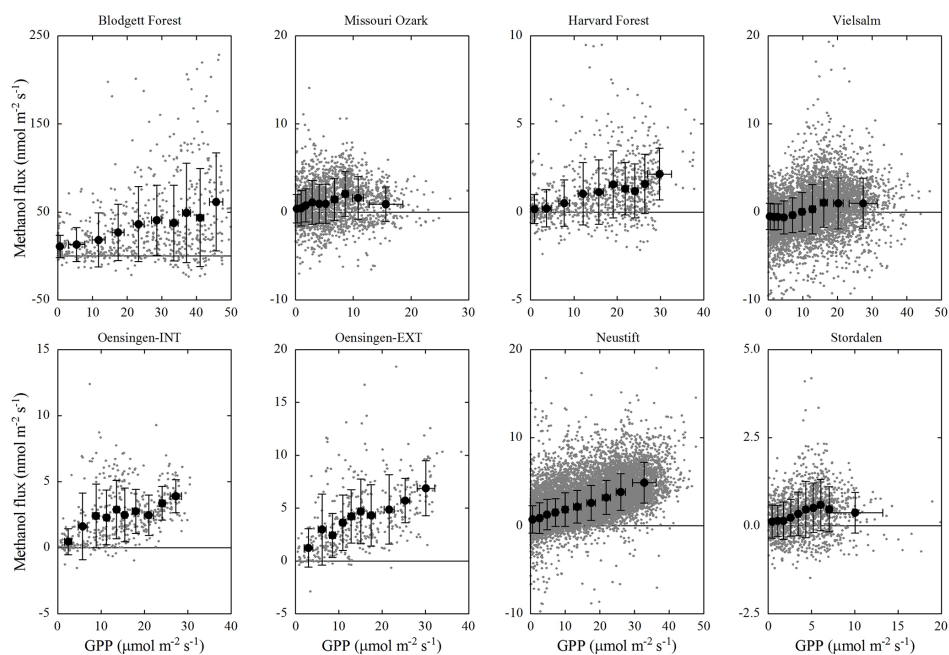
as net methanol emission. The magnitude of methanol deposition thus clearly influences the observed fraction of GPP that is lost as methanol emission and limits the usefulness of GPP for upscaling the net methanol exchange. In addition, it should be stressed that, on short timescales, GPP may be poorly correlated with NPP and even less with growth and the associated demethylation of pectin (Galbally and Kirstine, 2002).

Friction velocity and relative humidity explained slightly lower fractions of the variance compared to air temperature and GPP (Table 3). The positive relationship between friction velocity and methanol emission likely reflects the high degree of covariation between friction velocity and air temperature and photosynthetically active radiation (data not shown). Relative humidity was inversely related to methanol emission at all sites (Table 3), which may result from canopy water films developing during periods of high relative humidity (Burkhardt et al., 2009) within which methanol may adsorb/dissolve, effectively resulting in a reduction of the net emission. Alternatively, this may reflect the inverse relationship of relative humidity with temperature and photosynthetically active radiation and their relationship with methanol exchange discussed above. The time since the end of the last precipitation event (TSEOP), which was introduced as a sur-

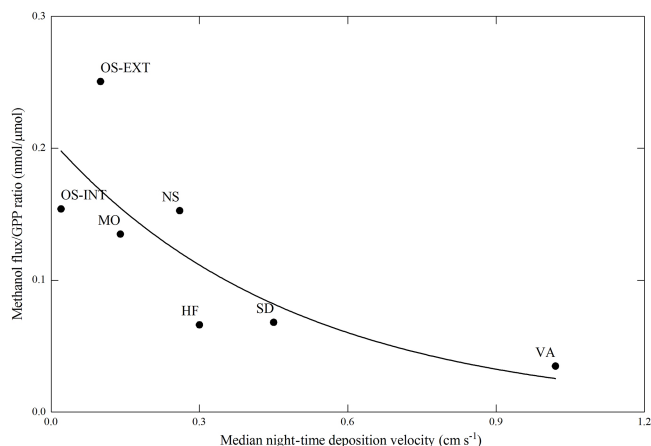
rogate for the presence of canopy water films (Laffineur et al., 2012), and soil water content explained less than 8 % of the variability in methanol emissions (Table 3). In the case of TSEOP, this likely indicates that a more process-based approach would be required to properly capture the effect of wetting and subsequent drying on methanol exchange (Warneke et al., 1999; Laffineur et al., 2012).

The investigated independent variables generally explained a smaller fraction of the variability in observed deposition compared to emission fluxes and half of the relationships were statistically not significant (Table 3). Relative humidity and friction velocity were the independent variables explaining the highest fraction (up to 21 %) of the variance at most sites. Except for one site, friction velocity was negatively correlated with methanol deposition, suggesting more efficient downward transport of methanol as mechanical turbulence increases. In contrast to methanol emissions, which were inversely related to relative humidity, a positive correlation with methanol deposition was found at half of the sites, indicating that relative humidity plays a more variable role among sites in modulating deposition than emission. The remaining variables explained less than 10 % of the variability in observed methanol deposition fluxes (except for the intensive grassland of Oensingen).





**Figure 5.** Relationship between gross photosynthesis (GPP) and methanol flux. Small grey symbols represent half-hourly flux measurements; black symbols represent 10 bin averages with equal numbers of data. Error bars refer to 1 standard deviation. Note different  $x$  and  $y$  scales in different panels.



**Figure 6.** Methanol flux to GPP ratio as a function of the median night-time deposition velocity. The solid line represents an exponential fit ( $r^2 = 0.77$ ).

In an attempt to investigate the common and site-specific controls on methanol emission and deposition, all data (except for Blodgett forest and those from the grassland sites influenced by management activities) were subjected to a univariate analysis of variance (Table 4). For methanol emissions, site identity and photosynthetically active radiation were the most important main effects. The largest fraction of variance was, however, explained by the interaction terms of site with relative humidity ( $\eta^2 = 1.45\%$ ) and GPP ( $\eta^2 =$

$0.98\%$ ), and to a lesser degree with photosynthetically active radiation and air temperature (Table 4). For methanol deposition, site identity was the only significant main factor ( $\eta^2 = 2.96\%$ ) and also contributed the largest fraction of explained variance, followed by the interaction terms between site and relative humidity and air temperature (Table 4). Overall this suggests that controls on methanol exchange are strongly site-specific and/or that factors not accounted for, such as soil type and microbial activity, play a substantial, possibly interactive, role in governing the ecosystem-atmosphere methanol exchange.

## 4 Conclusions

By compiling micrometeorological methanol flux data from eight different sites and by reviewing the corresponding literature, this study provides a first cross-site synthesis of the terrestrial ecosystem-scale methanol exchange and presents an independent, data-driven view of the land-atmosphere methanol exchange. Below we summarise the major findings, draw conclusions and make recommendations for future work.

It is now unequivocal that, at the ecosystem scale, methanol exchange is bi-directional (Figs. 1 and 2, Table 2) and, at some sites, deposition can even prevail over emission during extended periods of time (Langford et al., 2010a; Misztal et al., 2011; Laffineur et al., 2012). This finding is not new from the perspective of global methanol budgets, which

**Table 4.** Variance explained (partial eta-squared,  $\eta^2$ ) in methanol emission and deposition based on univariate analysis of variance (UNIANOVA) using all data exclusive of Blodgett Forest and the grassland site data influenced by management activities. See Table 3 for abbreviations.

	$\eta^2$ (%)	
	Emission	Deposition
Corrected model	57.0***	38.0***
Offset	0.09***	0.01 ns
PAR	0.69***	0.00 ns
TA	0.24***	0.02 ns
RH	0.06***	0.02 ns
$u_*$	0.16***	0.03 ns
GPP	0.17***	0.00 ns
TSEOP	0.00 ns	0.00 ns
ET	0.11***	0.00 ns
Site	0.76***	2.96***
Site $\times$ PAR	0.58***	0.07 ns
Site $\times$ TA	0.79***	1.49***
Site $\times$ RH	1.45***	2.71***
Site $\times u_*$	0.29***	0.71***
Site $\times$ GPP	0.98***	0.01 ns
Site $\times$ TSEOP	0.38***	0.10 ns
Site $\times$ ET	0.22***	0.21**
<i>n</i>	23 453	9092

do account for deposition to land and the oceans in addition to the OH sink, but emission and deposition are treated separately, which likely results in inconsistencies (Singh et al., 2000; Galbally and Kirstine, 2002; Heikes et al., 2002; Tie et al., 2003; von Kuhlmann et al., 2003a, b; Jacob et al., 2005; Millet et al., 2008; Stavrakou et al., 2011). The prominent role of deposition is an emerging feature of ecosystem-scale measurements and is in contrast to leaf-level work that has almost exclusively reported methanol emissions and focussed on describing the corresponding controls (e.g. Niinemets and Reichstein, 2003; Harley et al., 2007; Hüve et al., 2007).

The bi-directional nature of the terrestrial methanol flux makes it difficult for the present generation of models, which simulate emission and deposition separately, to fully capitalise on the rich information of micrometeorological measurements for calibration/validation. Guenther et al. (2012) proposed adding an estimate of the deposition flux to the net flux measured by micrometeorological methods to be used for calibrating the primary emission in MEGAN. While correct in principle, the emerging picture of methanol deposition being more difficult to predict than emission (Tables 3 and 4) makes it difficult in practice to “estimate” the magnitude of the deposition flux with confidence. We argue that these difficulties should be addressed by a new generation of models which reflect the available process knowledge about the controls on both emission and deposition of methanol and merge it into a unified modelling framework. For the strong

stomatal control on methanol emissions (Niinemets and Reichstein, 2003; Harley et al., 2007) and the role of water in adsorption/desorption of methanol (Laffineur et al., 2012), the corresponding theory is available. Land surface models which include a description of the ecosystem water budget, i.e. stomatal conductance, leaf energy balance, interception of precipitation (e.g. Berry et al., 1997), would provide most of the interfaces to this end. Further work is required in order to better understand the controls on leaf methanol production (Harley et al., 2007; Oikawa et al., 2011a), the role of chemical and/or biological (in particular microbial) removal of methanol on (wet) surfaces (Fall and Benson, 1996; Abanda-Nkpwatt et al., 2006; Laffineur et al., 2012) and the importance of soils as sources/sinks of methanol (Asensio et al., 2008; Greenberg et al., 2012; Stacheter et al., 2013; Peñuelas et al., 2014). Doing so is likely to require a combination of laboratory experiments under controlled conditions in order to better understand processes and in situ studies in order to confirm the relevance of these processes under real-world field conditions. Assessing the role of surface moisture for methanol exchange would clearly profit from direct measurements, distributed vertically within the plant canopy, of surface wetness in order to better quantify dew formation, interception of precipitation and the associated drying dynamics (e.g. Bregaglio et al., 2011).

Earlier work (Karl et al., 2001; Brunner et al., 2007; Davison et al., 2008; Hörtnagl et al., 2011; Ruuskanen et al., 2011; Brillì et al., 2012) and Fig. 3 conclusively show that management of agricultural ecosystems (biomass harvesting, grazing or application of organic fertiliser) results in short-term increases of methanol emissions by an order of magnitude. Despite being relatively short-lived, these bursts of BVOC emissions make a substantial contribution to the total BVOC budget of these agricultural ecosystems (Hörtnagl et al., 2011; Bamberger et al., 2014). Much less information is available for the effects of various forest management activities (pruning, thinning, clear cutting, residue management, etc.) on BVOC and methanol fluxes. Data from Blodgett Forest (Figs. 1 and 2) and the studies by Haapanala et al. (2012) and Schade and Goldstein (2003) suggest that forest management activities may cause longer-term perturbations of BVOC emissions compared to agricultural ecosystems. Given that the human appropriation of NPP has increased from 13 % of the NPP of potential vegetation in 1910 to 25 % in 2005 (Krausmann et al., 2013), we suggest that the effects of management on methanol emissions should be quantified for a larger range of ecosystems (in particular for managed forests) and be included in global budgets. As shown by Brillì et al. (2012) for grasslands, the magnitude of post-harvesting BVOC emissions scales with the amount of harvested biomass, suggesting that these emissions could be modelled based on agricultural/forestry census data (Schade and Goldstein, 2003), possibly in combination with remote sensing (for hindcast applications).

This study relied on data from eight study sites and reviewed an additional 21 published studies; thus it represents only a first step towards a data-driven assessment of the global land methanol flux. Data from additional sites in under-represented ecosystem types and climates are required to better constrain differences between different ecosystem types which are embedded in model parameters of different plant functional types (PFTs); for example, at present 10 of the 11 woody PFTs in MEGAN have one common methanol emission factor and the remaining 5 PFTs another one (Guenther et al., 2012). In a next step, methanol flux measurements need to be conducted over multiple years (including off-season periods; Bamberger et al., 2014) in order to be able to quantify and explain interannual variability in atmospheric methanol mole fractions. Doing so will also increase the likelihood of observing extremes in methanol exchange caused by weather extremes and/or biotic interference. For example, laboratory leaf-scale work has shown that herbivory by insects may elicit large methanol emissions (Von Dahl et al., 2006). However, at present we largely lack the data necessary for devising and testing models simulating herbivory-related perturbations of the methanol exchange at ecosystem scale (Arneth and Niinemets, 2010).

Building upon the experiences gathered in the FLUXNET project (Baldocchi et al., 2001), the BVOC flux community also should make a concerted effort towards standardising flux data acquisition and processing so that data are more readily comparable and models can be calibrated and validated based on harmonised data sets. Finally, we emphasise that micrometeorological methanol flux measurements are important, but not sufficient, for a better understanding and quantification of the global land methanol exchange. To this end, a multi-disciplinary and multi-scale approach which bridges detailed process studies at the molecular level (e.g. Abanda-Nkpwatt et al., 2006; Oikawa et al., 2011a; Oikawa et al., 2011b) and remote sensing at the global scale (e.g. Stavrou et al., 2011) is required.

**The Supplement related to this article is available online at doi:10.5194/acp-15-7413-2015-supplement.**

*Acknowledgements.* The work presented in this study received financial support from the following sources: the Austrian National Science Fund (FWF; P19849-B16, P23267-B16 and L518-N20), the Tyrolean Science Fund (TWF; Uni-404/486 and Uni-404/1083), the EU Industry-Academia Partnerships and Pathways Programme (IAPP; 218065), the Belgian Science Policy Office (BELSPO) (SD/TE/03A) through the IMPECVOC (Impact of Phenology and Environmental Conditions on BVOC Emissions from Forest Ecosystems) research project, the Fundación Ramón Areces through a postdoctoral fellowship awarded to Roger Seco, and the PNNL Laboratory Directed Research and Development programme support for Alex Guenther. Flux measurements at Harvard Forest

are a component of the Harvard Forest Long-term Ecological Research (LTER) site and are additionally supported by the Office of Science (BER), US Department of Energy. The authors would like to acknowledge the support of this work by Martin Graus, Markus Müller, Taina Ruuskanen, Ralf Schnitzhofer, Mario Walser, Alfred Unterberger, and Kevin P. Hosman.

Edited by: J. Rinne

## References

- Abanda-Nkpwatt, D., Misch, M., Tschiersch, J., Boettner, M., and Schwab, W.: Molecular interaction between *Methylobacterium extorquens* and seedlings: growth promotion, methanol consumption, and localization of the methanol emission site, *J. Exp. Bot.*, 57, 4025–4032, doi:10.1093/jxb/erl173, 2006.
- Arneth, A. and Niinemets, Ü.: Induced BVOCs: how to bug our models?, *Trends Plant Sci.*, 15, 118–125, doi:10.1016/j.tplants.2009.12.004, 2010.
- Asensio, D., Peñuelas, J., Prieto, P., Estiarte, M., Filella, I., and Llusià, J.: Interannual and seasonal changes in the soil exchange rates of monoterpenes and other VOCs in a Mediterranean shrubland, *Eur. J. Soil Sci.*, 59, 878–891, doi:10.1111/j.1365-2389.2008.01057.x, 2008.
- Baker, B., Guenther, A., Greenberg, J., and Fall, R.: Canopy Level Fluxes of 2-Methyl-3-buten-2-ol, Acetone, and Methanol by a Portable Relaxed Eddy Accumulation System, *Environ. Sci. Technol.*, 35, 1701–1708, doi:10.1021/es001007j, 2001.
- Baldocchi, D., Falge, E., Gu, L., Olson, R., Hollinger, D., Running, S., Anthoni, P., Bernhofer, C., Davis, K., Evans, R., Fuentes, J., Goldstein, A., Katul, G., Law, B., Lee, X., Malhi, Y., Meyers, T., Munger, W., Oechel, W., Paw, K. T. U., Pilegaard, K., Schmid, H. P., and Valentini, R.: FLUXNET: A New Tool to Study the Temporal and Spatial Variability of Ecosystem-Scale Carbon Dioxide, Water Vapor, and Energy Flux Densities, *Bull. Am. Meteorol. Soc.*, 82, 2415–2434, 2001.
- Baldocchi, D. D.: Assessing the eddy covariance technique for evaluating carbon dioxide exchange rates of ecosystems: past, present and future, *Global Change Biol.*, 9, 479–492, doi:10.1046/j.1365-2486.2003.00629.x, 2003.
- Baldocchi, D. D., Hicks, B. B., and Meyers, T. P.: Measuring Biosphere-Atmosphere Exchanges of Biologically Related Gases with Micrometeorological Methods, *Ecology*, 69, 1331–1340, doi:10.2307/1941631, 1988.
- Bamberger, I., Hörtnagl, L., Walser, M., Hansel, A., and Wohlfahrt, G.: Gap-filling strategies for annual VOC flux data sets, *Biogeosciences*, 11, 2429–2442, doi:10.5194/bg-11-2429-2014, 2014.
- Beer, C., Reichstein, M., Tomelleri, E., Ciais, P., Jung, M., Carvalhais, N., Rödenbeck, C., Arain, M. A., Baldocchi, D., Bonan, G. B., Bondeau, A., Cescatti, A., Lasslop, G., Lindroth, A., Lomas, M., Luysaert, S., Margolis, H., Oleson, K. W., Rouspard, O., Veenendaal, E., Viovy, N., Williams, C., Woodward, F. I., and Papale, D.: Terrestrial Gross Carbon Dioxide Uptake: Global Distribution and Covariation with Climate, *Science*, 329, 834–838, doi:10.1126/science.1184984, 2010.
- Berry, J. A., Collatz, G. J., Denning, A. S., Colello, D. A., Fu, W., Grivet, C., Randall, D. A., and Sellers, P. J.: SiB2, a model for simulation of biological processes within a climate model, in:

- Scaling-up: from cell to landscape, edited by: van Gardingen, P. R., Foody, G. M., and Curran, P. J., Society for Experimental Biology Seminar Series 63, Cambridge University Press, Cambridge, 347–369, 1997.
- Bouvier-Brown, N. C., Schade, G. W., Misson, L., Lee, A., McKay, M., and Goldstein, A. H.: Contributions of biogenic volatile organic compounds to net ecosystem carbon flux in a ponderosa pine plantation, *Atmos. Environ.*, 60, 527–533, doi:10.1016/j.atmosenv.2012.06.070, 2012.
- Bregaglio, S., Donatelli, M., Confalonieri, R., Acutis, M., and Orlandini, S.: Multi metric evaluation of leaf wetness models for large-area application of plant disease models, *Agr. Forest Meteorol.*, 151, 1163–1172, doi:10.1016/j.agrformet.2011.04.003, 2011.
- Brilli, F., Hörtnagl, L., Bamberger, I., Schnitzhofer, R., Ruuskanen, T. M., Hansel, A., Loreto, F., and Wohlfahrt, G.: Qualitative and Quantitative Characterization of Volatile Organic Compound Emissions from Cut Grass, *Environ. Sci. Technol.*, 46, 3859–3865, doi:10.1021/es204025y, 2012.
- Brilli, F., Gioli, B., Zona, D., Pallozzi, E., Zenone, T., Fratini, G., Calafapietra, C., Loreto, F., Janssens, I. A., and Ceulemans, R.: Simultaneous leaf- and ecosystem-level fluxes of volatile organic compounds from a poplar-based SRC plantation, *Agr. Forest Meteorol.*, 187, 22–35, doi:10.1016/j.agrformet.2013.11.006, 2014.
- Brunner, A., Ammann, C., Neftel, A., and Spirig, C.: Methanol exchange between grassland and the atmosphere, *Biogeosciences*, 4, 395–410, doi:10.5194/bg-4-395-2007, 2007.
- Burkhardt, J., Flechard, C. R., Gressens, F., Mattsson, M., Jongejan, P. A. C., Erisman, J. W., Weidinger, T., Meszaros, R., Nemitz, E., and Sutton, M. A.: Modelling the dynamic chemical interactions of atmospheric ammonia with leaf surface wetness in a managed grassland canopy, *Biogeosciences*, 6, 67–84, doi:10.5194/bg-6-67-2009, 2009.
- Conrad, R.: Soil microorganisms as controllers of atmospheric trace gases (H<sub>2</sub>, CO, CH<sub>4</sub>, OCS, N<sub>2</sub>O, and NO), *Microbiol. Rev.*, 60, 609–640, 1996.
- Conrad, R. and Claus, P.: Contribution of methanol to the production of methane and its <sup>13</sup>C-isotopic signature in anoxic rice field soil, *Biogeochemistry*, 73, 381–393, doi:10.1007/s10533-004-0366-9, 2005.
- Custer, T. and Schade, G.: Methanol and acetaldehyde fluxes over ryegrass, *Tellus B*, 59, 673–684, doi:10.1111/j.1600-0889.2007.00294.x, 2007.
- Davison, B., Brunner, A., Ammann, C., Spirig, C., Jocher, M., and Neftel, A.: Cut-induced VOC emissions from agricultural grasslands, *Plant Biol.*, 10, 76–85, doi:10.1055/s-2007-965043, 2008.
- Davison, B., Taipale, R., Langford, B., Misztal, P., Fares, S., Matteucci, G., Loreto, F., Cape, J. N., Rinne, J., and Hewitt, C. N.: Concentrations and fluxes of biogenic volatile organic compounds above a Mediterranean macchia ecosystem in western Italy, *Biogeosciences*, 6, 1655–1670, doi:10.5194/bg-6-1655-2009, 2009.
- Duncan, B. N., Logan, J. A., Bey, I., Megretskaia, I. A., Yantosca, R. M., Novelli, P. C., Jones, N. B., and Rinsland, C. P.: Global budget of CO, 1988 – 1997: Source estimates and validation with a global model, *J. Geophys. Res.*, 112, D22301, doi:10.1029/2007jd008459, 2007.
- Fall, R. and Benson, A. A.: Leaf methanol – the simplest natural product from plants, *Trends Plant Sci.*, 1, 296–301, doi:10.1016/S1360-1385(96)88175-0, 1996.
- Fares, S., Park, J.-H., Gentner, D. R., Weber, R., Ormeño, E., Karlik, J., and Goldstein, A. H.: Seasonal cycles of biogenic volatile organic compound fluxes and concentrations in a California citrus orchard, *Atmos. Chem. Phys.*, 12, 9865–9880, doi:10.5194/acp-12-9865-2012, 2012.
- Galbally, I. E. and Kirstine, W.: The Production of Methanol by Flowering Plants and the Global Cycle of Methanol, *J. Atmos. Chem.*, 43, 195–229, doi:10.1023/A:1020684815474, 2002.
- Gentner, D. R., Ford, T. B., Guha, A., Boulanger, K., Brioude, J., Angevine, W. M., de Gouw, J. A., Warneke, C., Gilman, J. B., Ryerson, T. B., Peischl, J., Meinardi, S., Blake, D. R., Atlas, E., Lonneman, W. A., Kleindienst, T. E., Beaver, M. R., Clair, J. M. St., Wennberg, P. O., VandenBoer, T. C., Markovic, M. Z., Murphy, J. G., Harley, R. A., and Goldstein, A. H.: Emissions of organic carbon and methane from petroleum and dairy operations in California’s San Joaquin Valley, *Atmos. Chem. Phys.*, 14, 4955–4978, doi:10.5194/acp-14-4955-2014, 2014.
- Graus, M., Müller, M., and Hansel, A.: High resolution PTR-TOF: quantification and formula confirmation of VOC in real time, *J. Am. Soc. Mass Spectr.*, 21, 1037–1044, doi:10.1016/j.jasms.2010.02.006, 2010.
- Greenberg, J. P., Asensio, D., Turnipseed, A., Guenther, A. B., Karl, T., and Gochis, D.: Contribution of leaf and needle litter to whole ecosystem BVOC fluxes, *Atmos. Environ.*, 59, 302–311, doi:10.1016/j.atmosenv.2012.04.038, 2012.
- Guenther, A., Hewitt, C. N., Erickson, D., Fall, R., Geron, C., Graedel, T., Harley, P., Klinger, L., Lerdau, M., McKay, W. A., Pierce, T., Scholes, B., Steinbrecher, R., Tallamraju, R., Taylor, J., and Zimmerman, P.: A global model of natural volatile organic compound emissions, *J. Geophys. Res.*, 100, 8873–8892, doi:10.1029/94jd02950, 1995.
- Guenther, A. B., Jiang, X., Heald, C. L., Sakulyanontvittaya, T., Duhl, T., Emmons, L. K., and Wang, X.: The Model of Emissions of Gases and Aerosols from Nature version 2.1 (MEGAN2.1): an extended and updated framework for modeling biogenic emissions, *Geosci. Model Dev.*, 5, 1471–1492, doi:10.5194/gmd-5-1471-2012, 2012.
- Haapanala, S., Hakola, H., Hellén, H., Vestenius, M., Levula, J., and Rinne, J.: Is forest management a significant source of monoterpenes into the boreal atmosphere?, *Biogeosciences*, 9, 1291–1300, doi:10.5194/bg-9-1291-2012, 2012.
- Hansel, A., Jordan, A., Holzinger, R., Prazeller, P., Vogel, W., and Lindinger, W.: Proton transfer reaction mass spectrometry: on-line trace gas analysis at the ppb level, *Int. J. Mass Spectrom. Ion Proc.*, 149/150, 609–619, doi:10.1016/0168-1176(95)04294-U, 1995.
- Harley, P., Greenberg, J., Niinemets, Ü., and Guenther, A.: Environmental controls over methanol emission from leaves, *Biogeosciences*, 4, 1083–1099, doi:10.5194/bg-4-1083-2007, 2007.
- Heikes, B. G., Chang, W., Pilon, M. E. Q., Swift, E., Singh, H. B., Guenther, A., Jacob, D. J., Field, B. D., Fall, R., Riemer, D., and Brand, L.: Atmospheric methanol budget and ocean implication, *Global Biogeochem. Cy.*, 16, 1133, doi:10.1029/2002GB001895, 2002.
- Hewitt, C. N., Langford, B., Possell, M., Karl, T., and Owen, S. M.: Quantification of VOC emission rates from

- the biosphere, *TRAC-Trend. Anal. Chem.*, 30, 937–944, doi:10.1016/j.trac.2011.03.008, 2011.
- Holst, T., Arneith, A., Hayward, S., Ekberg, A., Mastepanov, M., Jackowicz-Korczynski, M., Friberg, T., Crill, P. M., and Bäckstrand, K.: BVOC ecosystem flux measurements at a high latitude wetland site, *Atmos. Chem. Phys.*, 10, 1617–1634, doi:10.5194/acp-10-1617-2010, 2010.
- Hörtnagl, L., Clement, R., Graus, M., Hammerle, A., Hansel, A., and Wohlfahrt, G.: Dealing with disjunct concentration measurements in eddy covariance applications: A comparison of available approaches, *Atmos. Environ.*, 44, 2024–2032, doi:10.1016/j.atmosenv.2010.02.042, 2010.
- Hörtnagl, L., Bamberger, I., Graus, M., Ruuskanen, T. M., Schnitzhofer, R., Müller, M., Hansel, A., and Wohlfahrt, G.: Biotic, abiotic, and management controls on methanol exchange above a temperate mountain grassland, *J. Geophys. Res.*, 116, G03021, doi:10.1029/2011jg001641, 2011.
- Hüve, K., Christ, M., Kleist, E., Uerlings, R., Niinemets, Ü., Walter, A., and Wildt, J.: Simultaneous growth and emission measurements demonstrate an interactive control of methanol release by leaf expansion and stomata, *J. Exp. Bot.*, 58, 1783–1793, doi:10.1093/jxb/erm038, 2007.
- Jacob, D. J., Field, B. D., Li, Q., Blake, D. R., de Gouw, J., Warneke, C., Hansel, A., Wisthaler, A., Singh, H. B., and Guenther, A.: Global budget of methanol: Constraints from atmospheric observations, *J. Geophys. Res. Atmos.*, 110, D08303, doi:10.1029/2004JD005172, 2005.
- Karl, T., Guenther, A., Jordan, A., Fall, R., and Lindinger, W.: Eddy covariance measurements of oxygenated volatile organic compound fluxes from crop harvesting using a redesigned proton-transfer-reaction mass spectrometer, *J. Geophys. Res.*, 106, 24157–24167, doi:10.1029/2000JD000112, 2001.
- Karl, T., Guenther, A., Spirig, C., Hansel, A., and Fall, R.: Seasonal variation of biogenic VOC emissions above a mixed hardwood forest in northern Michigan, *Geophys. Res. Lett.*, 30, 2186, doi:10.1029/2003GL018432, 2003.
- Karl, T., Potosnak, M., Guenther, A., Clark, D., Walker, J., Herrick, J. D., and Geron, C.: Exchange processes of volatile organic compounds above a tropical rain forest: Implications for modeling tropospheric chemistry above dense vegetation, *J. Geophys. Res. Atmos.*, 109, D18306, doi:10.1029/2004JD004738, 2004.
- Karl, T., Harley, P., Guenther, A., Rasmussen, R., Baker, B., Jardine, K., and Nemitz, E.: The bi-directional exchange of oxygenated VOCs between a loblolly pine (*Pinus taeda*) plantation and the atmosphere, *Atmos. Chem. Phys.*, 5, 3015–3031, doi:10.5194/acp-5-3015-2005, 2005.
- Karl, T. G., Spirig, C., Rinne, J., Stroud, C., Prevost, P., Greenberg, J., Fall, R., and Guenther, A.: Virtual disjunct eddy covariance measurements of organic compound fluxes from a subalpine forest using proton transfer reaction mass spectrometry, *Atmos. Chem. Phys.*, 2, 279–291, doi:10.5194/acp-2-279-2002, 2002.
- Kolb, S.: Aerobic methanol-oxidizing Bacteria in soil, *FEMS Microbiology Letters*, 300, 1–10, doi:10.1111/j.1574-6968.2009.01681.x, 2009.
- Krausmann, F., Erb, K.-H., Gingrich, S., Haberl, H., Bondeau, A., Gaube, V., Lauk, C., Plutzer, C., and Searchinger, T. D.: Global human appropriation of net primary production doubled in the 20th century, *Proc. Natl. Acad. Sci. USA*, 110, 10324–10329, doi:10.1073/pnas.1211349110, 2013.
- Laffineur, Q., Aubinet, M., Schoon, N., Amelynck, C., Müller, J.-F., Dewulf, J., Van Langenhove, H., Steppe, K., and Heinesch, B.: Abiotic and biotic control of methanol exchanges in a temperate mixed forest, *Atmos. Chem. Phys.*, 12, 577–590, doi:10.5194/acp-12-577-2012, 2012.
- Langford, B., Davison, B., Nemitz, E., and Hewitt, C. N.: Mixing ratios and eddy covariance flux measurements of volatile organic compounds from an urban canopy (Manchester, UK), *Atmos. Chem. Phys.*, 9, 1971–1987, doi:10.5194/acp-9-1971-2009, 2009.
- Langford, B., Misztal, P. K., Nemitz, E., Davison, B., Helfter, C., Pugh, T. A. M., MacKenzie, A. R., Lim, S. F., and Hewitt, C. N.: Fluxes and concentrations of volatile organic compounds from a South-East Asian tropical rainforest, *Atmos. Chem. Phys.*, 10, 8391–8412, doi:10.5194/acp-10-8391-2010, 2010a.
- Langford, B., Nemitz, E., House, E., Phillips, G. J., Famulari, D., Davison, B., Hopkins, J. R., Lewis, A. C., and Hewitt, C. N.: Fluxes and concentrations of volatile organic compounds above central London, UK, *Atmos. Chem. Phys.*, 10, 627–645, doi:10.5194/acp-10-627-2010, 2010b.
- Lee, A., Schade, G. W., Holzinger, R., and Goldstein, A. H.: A comparison of new measurements of total monoterpene flux with improved measurements of speciated monoterpene flux, *Atmos. Chem. Phys.*, 5, 505–513, doi:10.5194/acp-5-505-2005, 2005.
- Lindinger, W., Hansel, A., and Jordan, A.: On-line monitoring of volatile organic compounds at pptv levels by means of proton-transfer-reaction mass spectrometry (PTR-MS) medical applications, food control and environmental research, *Int. J. Mass Spectrom. Ion Proc.*, 173, 191–241, doi:10.1016/s0168-1176(97)00281-4, 1998.
- Mauder, M. and Foken, T.: Impact of post-field data processing on eddy covariance flux estimates and energy balance closure, *Meteorol. Z.*, 15, 597–609, doi:10.1127/0941-2948/2006/0167, 2006.
- McKinney, K. A., Lee, B. H., Vasta, A., Pho, T. V., and Munger, J. W.: Emissions of isoprenoids and oxygenated biogenic volatile organic compounds from a New England mixed forest, *Atmos. Chem. Phys.*, 11, 4807–4831, doi:10.5194/acp-11-4807-2011, 2011.
- Millet, D. B., Jacob, D. J., Custer, T. G., de Gouw, J. A., Goldstein, A. H., Karl, T., Singh, H. B., Sive, B. C., Talbot, R. W., Warneke, C., and Williams, J.: New constraints on terrestrial and oceanic sources of atmospheric methanol, *Atmos. Chem. Phys.*, 8, 6887–6905, doi:10.5194/acp-8-6887-2008, 2008.
- Misztal, P. K., Nemitz, E., Langford, B., Di Marco, C. F., Phillips, G. J., Hewitt, C. N., MacKenzie, A. R., Owen, S. M., Fowler, D., Heal, M. R., and Cape, J. N.: Direct ecosystem fluxes of volatile organic compounds from oil palms in South-East Asia, *Atmos. Chem. Phys.*, 11, 8995–9017, doi:10.5194/acp-11-8995-2011, 2011.
- Müller, M., Graus, M., Ruuskanen, T. M., Schnitzhofer, R., Bamberger, I., Kaser, L., Titzmann, T., Hörtnagl, L., Wohlfahrt, G., Karl, T., and Hansel, A.: First eddy covariance flux measurements by PTR-TOF, *Atmos. Meas. Tech.*, 3, 387–395, doi:10.5194/amt-3-387-2010, 2010.
- Niinemets, Ü. and Reichstein, M.: Controls on the emission of plant volatiles through stomata: Differential sensitivity of emission rates to stomatal closure explained, *J. Geophys. Res. Atmos.*, 108, 4208, doi:10.1029/2002JD002620, 2003.

- Oikawa, P. Y., Giebel, B. M., da Silveira Lobo O'Reilly Sternberg, L., Li, L., Timko, M. P., Swart, P. K., Riemer, D. D., Mak, J. E., and Lerdau, M. T.: Leaf and root pectin methylesterase activity and  $^{13}\text{C}/^{12}\text{C}$  stable isotopic ratio measurements of methanol emissions give insight into methanol production in *Lycopersicon esculentum*, *New Phytol.*, 191, 1031–1040, doi:10.1111/j.1469-8137.2011.03770.x, 2011a.
- Oikawa, P. Y., Li, L., Timko, M. P., Mak, J. E., and Lerdau, M. T.: Short term changes in methanol emission and pectin methylesterase activity are not directly affected by light in *Lycopersicon esculentum*, *Biogeosciences*, 8, 1023–1030, doi:10.5194/bg-8-1023-2011, 2011b.
- Palmer, P. I., Jacob, D. J., Fiore, A. M., Martin, R. V., Chance, K., and Kurosu, T. P.: Mapping isoprene emissions over North America using formaldehyde column observations from space, *J. Geophys. Res. Atmos.*, 108, 4180, doi:10.1029/2002JD002153, 2003.
- Park, J.-H., Goldstein, A. H., Timkovsky, J., Fares, S., Weber, R., Karlik, J., and Holzinger, R.: Active Atmosphere-Ecosystem Exchange of the Vast Majority of Detected Volatile Organic Compounds, *Science*, 341, 643–647, doi:10.1126/science.1235053, 2013.
- Park, J.-H., Fares, S., Weber, R., and Goldstein, A. H.: Biogenic volatile organic compound emissions during BEARPEX 2009 measured by eddy covariance and flux–gradient similarity methods, *Atmos. Chem. Phys.*, 14, 231–244, doi:10.5194/acp-14-231-2014, 2014.
- Peñuelas, J., Asensio, D., Tholl, D., Wenke, K., Rosenkranz, M., Piechulla, B., and Schnitzler, J. P.: Biogenic volatile emissions from the soil, *Plant Cell Environ.*, 37, 1866–1891, doi:10.1111/pce.12340, 2014.
- Reichstein, M., Falge, E., Baldocchi, D., Papale, D., Aubinet, M., Berbigier, P., Bernhofer, C., Buchmann, N., Gilmanov, T., Granier, A., Grunwald, T., Havrankova, K., Ilvesniemi, H., Janous, D., Knohl, A., Laurila, T., Lohila, A., Loustau, D., Matteucci, G., Meyers, T., Miglietta, F., Ourcival, J.-M., Pumpanen, J., Rambal, S., Rotenberg, E., Sanz, M., Tenhunen, J., Seufert, G., Vaccari, F., Vesala, T., Yakir, D., and Valentini, R.: On the separation of net ecosystem exchange into assimilation and ecosystem respiration: review and improved algorithm, *Global Change Biol.*, 11, 1424–1439, doi:10.1111/j.1365-2486.2005.001002.x, 2005.
- Rinne, J., Taipale, R., Markkanen, T., Ruuskanen, T. M., Hellén, H., Kajos, M. K., Vesala, T., and Kulmala, M.: Hydrocarbon fluxes above a Scots pine forest canopy: measurements and modeling, *Atmos. Chem. Phys.*, 7, 3361–3372, doi:10.5194/acp-7-3361-2007, 2007.
- Ruuskanen, T. M., Müller, M., Schnitzhofer, R., Karl, T., Graus, M., Bamberger, I., Hörtnagl, L., Brilli, F., Wohlfahrt, G., and Hansel, A.: Eddy covariance VOC emission and deposition fluxes above grassland using PTR-TOF, *Atmos. Chem. Phys.*, 11, 611–625, doi:10.5194/acp-11-611-2011, 2011.
- Schade, G., Solomon, S., Dellwik, E., Pilegaard, K., and Ladstätter-Weissenmayer, A.: Methanol and other VOC fluxes from a Danish beech forest during late springtime, *Biogeochemistry*, 106, 337–355, doi:10.1007/s10533-010-9515-5, 2011.
- Schade, G. W. and Custer, T. G.: OVOC emissions from agricultural soil in northern Germany during the 2003 European heat wave, *Atmos. Environ.*, 38, 6105–6114, doi:10.1016/j.atmosenv.2004.08.017, 2004.
- Schade, G. W. and Goldstein, A. H.: Fluxes of oxygenated volatile organic compounds from a ponderosa pine plantation, *J. Geophys. Res. Atmos.*, 106, 3111–3123, doi:10.1029/2000JD900592, 2001.
- Schade, G. W. and Goldstein, A. H.: Increase of monoterpene emissions from a pine plantation as a result of mechanical disturbances, *Geophys. Res. Lett.*, 30, 1380, doi:10.1029/2002GL016138, 2003.
- Seco, R., Peñuelas, J., and Filella, I.: Short-chain oxygenated VOCs: Emission and uptake by plants and atmospheric sources, sinks, and concentrations, *Atmos. Environ.*, 41, 2477–2499, doi:10.1016/j.atmosenv.2006.11.029, 2007.
- Seco, R., Peñuelas, J., Filella, I., Llusà, J., Molowny-Horas, R., Schallhart, S., Metzger, A., Müller, M., and Hansel, A.: Contrasting winter and summer VOC mixing ratios at a forest site in the Western Mediterranean Basin: the effect of local biogenic emissions, *Atmos. Chem. Phys.*, 11, 13161–13179, doi:10.5194/acp-11-13161-2011, 2011.
- Seco, R., Karl, T., Guenther, A., Hosman, K. P., Pallardy, S. G., Gu, L., Geron, C., Harley, P., and Kim, S.: Ecosystem-scale volatile organic compound fluxes during an extreme drought in a broadleaf temperate forest of the Missouri Ozarks (central USA), *Global Change Biol.*, doi:10.1111/gcb.12980, in press, 2015.
- Singh, H., Chen, Y., Tabazadeh, A., Fukui, Y., Bey, I., Yantosca, R., Jacob, D., Arnold, F., Wohlfrom, K., Atlas, E., Flocke, F., Blake, D., Blake, N., Heikes, B., Snow, J., Talbot, R., Gregory, G., Sachse, G., Vay, S., and Kondo, Y.: Distribution and fate of selected oxygenated organic species in the troposphere and lower stratosphere over the Atlantic, *J. Geophys. Res. Atmos.*, 105, 3795–3805, doi:10.1029/1999JD900779, 2000.
- Spirig, C., Neftel, A., Ammann, C., Dommen, J., Grabmer, W., Thielmann, A., Schaub, A., Beauchamp, J., Wisthaler, A., and Hansel, A.: Eddy covariance flux measurements of biogenic VOCs during ECHO 2003 using proton transfer reaction mass spectrometry, *Atmos. Chem. Phys.*, 5, 465–481, doi:10.5194/acp-5-465-2005, 2005.
- Stacheter, A., Noll, M., Lee, C. K., Selzer, M., Glowik, B., Ebertsch, L., Mertel, R., Schulz, D., Lampert, N., Drake, H. L., and Kolb, S.: Methanol oxidation by temperate soils and environmental determinants of associated methylotrophs, *ISME Journal*, 7, 1051–1064, doi:10.1038/ismej.2012.167, 2013.
- Stavrakou, T., Guenther, A., Razavi, A., Clarisse, L., Clerbaux, C., Coheur, P.-F., Hurtmans, D., Karagulian, F., De Maizière, M., Vigouroux, C., Amelynck, C., Schoon, N., Laffineur, Q., Heinesch, B., Aubinet, M., Rinsland, C., and Müller, J.-F.: First space-based derivation of the global atmospheric methanol emission fluxes, *Atmos. Chem. Phys.*, 11, 4873–4898, doi:10.5194/acp-11-4873-2011, 2011.
- Tie, X., Guenther, A., and Holland, E.: Biogenic methanol and its impacts on tropospheric oxidants, *Geophys. Res. Lett.*, 30, 1881, doi:10.1029/2003GL017167, 2003.
- Velasco, E., Lamb, B., Pressley, S., Allwine, E., Westberg, H., Jobson, B. T., Alexander, M., Prazeller, P., Molina, L., and Molina, M.: Flux measurements of volatile organic compounds from an urban landscape, *Geophys. Res. Lett.*, 32, L20802, doi:10.1029/2005GL023356, 2005.

- Velasco, E., Pressley, S., Grivicke, R., Allwine, E., Coons, T., Foster, W., Jobson, B. T., Westberg, H., Ramos, R., Hernández, F., Molina, L. T., and Lamb, B.: Eddy covariance flux measurements of pollutant gases in urban Mexico City, *Atmos. Chem. Phys.*, 9, 7325–7342, doi:10.5194/acp-9-7325-2009, 2009.
- Von Dahl, C. C., Hävecker, M., Schlögl, R., and Baldwin, I. T.: Caterpillar-elicited methanol emission: a new signal in plant–herbivore interactions?, *The Plant Journal*, 46, 948–960, 10.1111/j.1365-313X.2006.02760.x, 2006.
- von Kuhlmann, R., Lawrence, M. G., Crutzen, P. J., and Rasch, P. J.: A model for studies of tropospheric ozone and nonmethane hydrocarbons: Model evaluation of ozone-related species, *J. Geophys. Res. Atmos.*, 108, 4729, doi:10.1029/2002JD003348, 2003a.
- von Kuhlmann, R., Lawrence, M. G., Crutzen, P. J., and Rasch, P. J.: A model for studies of tropospheric ozone and nonmethane hydrocarbons: Model description and ozone results, *J. Geophys. Res. Atmos.*, 108, 4294, doi:10.1029/2002JD002893, 2003b.
- Waring, R. H., Landsberg, J. J., and Williams, M.: Net primary production of forests: a constant fraction of gross primary production?, *Tree Physiol.*, 18, 129–134, doi:10.1093/treephys/18.2.129, 1998.
- Warneke, C., Karl, T., Judmaier, H., Hansel, A., Jordan, A., Lindinger, W., and Crutzen, P. J.: Acetone, methanol, and other partially oxidized volatile organic emissions from dead plant matter by abiological processes: Significance for atmospheric HO<sub>x</sub> chemistry, *Global Biogeochem. Cy.*, 13, 9–17, doi:10.1029/98GB02428, 1999.
- Warneke, C., Luxembourg, S. L., de Gouw, J. A., Rinne, H. J. I., Guenther, A. B., and Fall, R.: Disjunct eddy covariance measurements of oxygenated volatile organic compounds fluxes from an alfalfa field before and after cutting, *J. Geophys. Res. Atmos.*, 107, 4067, doi:10.1029/2001JD000594, 2002.
- Westberg, H., Lamb, B., Hafer, R., Hills, A., Shepson, P., and Vogel, C.: Measurement of isoprene fluxes at the PROPHET site, *J. Geophys. Res. Atmos.*, 106, 24347–24358, doi:10.1029/2000JD900735, 2001.
- Zhang, Y., Xu, M., Chen, H., and Adams, J.: Global pattern of NPP to GPP ratio derived from MODIS data: effects of ecosystem type, geographical location and climate, *Global Ecol. Biogeogr.*, 18, 280–290, doi:10.1111/j.1466-8238.2008.00442.x, 2009.