

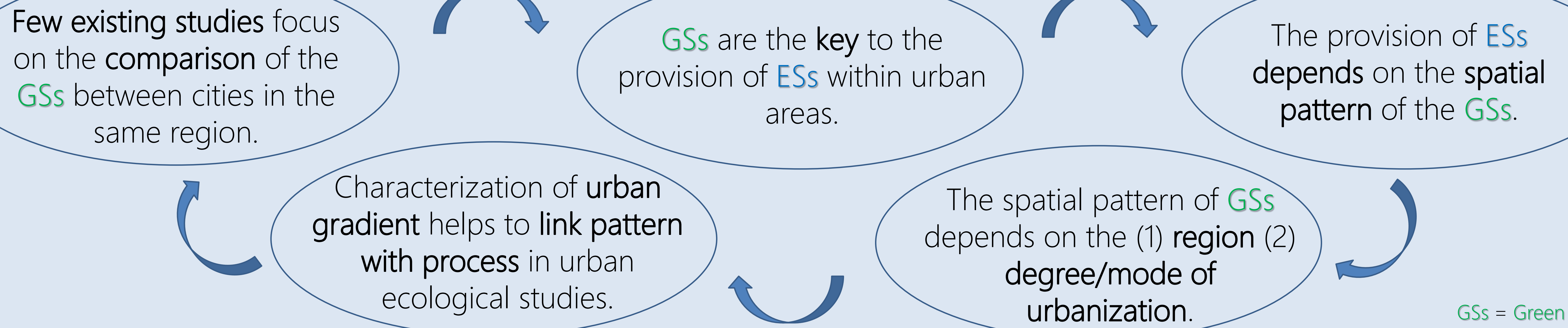
About generalization of the spatial pattern of green spaces among different cities

Justine MARÉCHAL, Jan BOGAERT, Grégory MAHY
Biodiversity and Landscape Unit, Gembloux Agro-Bio Tech, University of Liège, Belgium



PLURISK Project: Forecasting and management of extreme rainfall induced risks in the urban environment
Funded by the Belgian Science Policy Office (May 2012 → 2016)
Work Package 5: Risk reduction by prevention, management and real-time control

Context



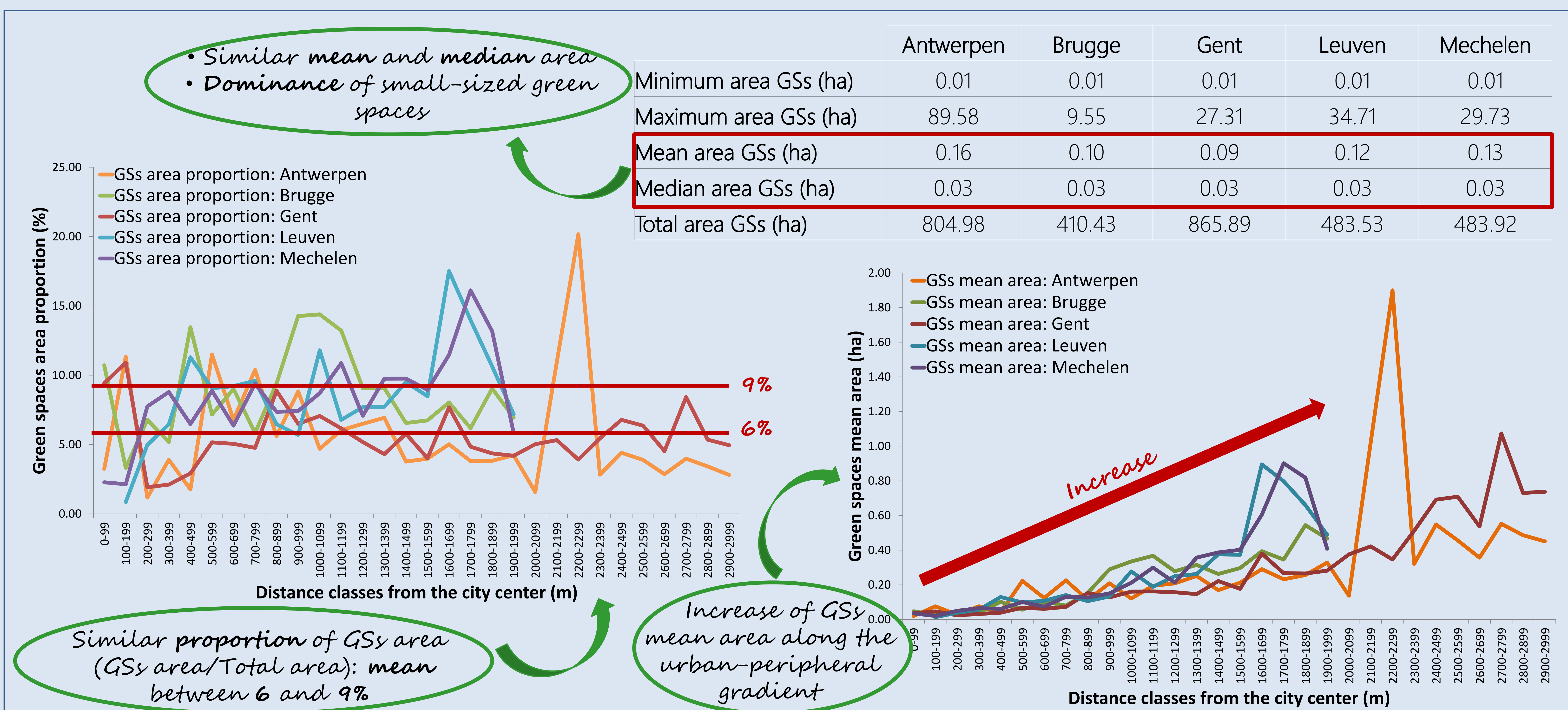
GSs = Green Spaces
ESs = Ecosystem Services

Objective

Compare the spatial pattern of green spaces for five cities in the same region (Flanders, northern part of Belgium) with a similar historical development: is the spatial pattern of green spaces generalizable?

Method

Results & Discussion



Wait a minute!
What is the link with the urbanization type? 🤖

To be continued...

More information about PLURISK project: www.kuleuven.be/hydr/plurisk
Visit our websites: www.gembloux.ulg.ac.be/biodiversite-et-paysage
www.biodiversity.be