

Trait decoupling promotes evolutionary diversification of the trophic and acoustic system of damselfishes

Bruno Frédérich, Damien Olivier, Glenn Litsios, Michael E. Alfaro and Eric Parmentier

Proc. R. Soc. B 2014 **281**, 20141047, published 2 July 2014

Supplementary data

["Data Supplement"](#)

<http://rsob.royalsocietypublishing.org/content/suppl/2014/06/27/rsob.2014.1047.DC1.html>

References

[This article cites 50 articles, 14 of which can be accessed free](#)

<http://rsob.royalsocietypublishing.org/content/281/1789/20141047.full.html#ref-list-1>

Subject collections

Articles on similar topics can be found in the following collections

[evolution](#) (1812 articles)

Email alerting service

Receive free email alerts when new articles cite this article - sign up in the box at the top right-hand corner of the article or click [here](#)

Research



Cite this article: Frédéric B, Olivier D, Litsios G, Alfaro ME, Parmentier E. 2014 Trait decoupling promotes evolutionary diversification of the trophic and acoustic system of damselfishes. *Proc. R. Soc. B* **281**: 20141047. <http://dx.doi.org/10.1098/rspb.2014.1047>

Received: 2 May 2014

Accepted: 9 June 2014

Subject Areas:

evolution

Keywords:

coral reef fishes, trait evolution, morphospace, morphological novelty, constraint, sound production

Author for correspondence:

Bruno Frédéric

e-mail: bruno.frederich@ulg.ac.be

Electronic supplementary material is available at <http://dx.doi.org/10.1098/rspb.2014.1047> or via <http://rspb.royalsocietypublishing.org>.

Trait decoupling promotes evolutionary diversification of the trophic and acoustic system of damselfishes

Bruno Frédéric¹, Damien Olivier¹, Glenn Litsios^{2,3}, Michael E. Alfaro⁴ and Eric Parmentier¹

¹Laboratoire de Morphologie Fonctionnelle et Evolutive, Applied and Fundamental Fish Research Center, Université de Liège, 4000 Liège, Belgium

²Department of Ecology and Evolution, University of Lausanne, 1015 Lausanne, Switzerland

³Swiss Institute of Bioinformatics, Génopode, Quartier Sorge, 1015 Lausanne, Switzerland

⁴Department of Ecology and Evolutionary Biology, University of California, Los Angeles, CA 90095, USA

Trait decoupling, wherein evolutionary release of constraints permits specialization of formerly integrated structures, represents a major conceptual framework for interpreting patterns of organismal diversity. However, few empirical tests of this hypothesis exist. A central prediction, that the tempo of morphological evolution and ecological diversification should increase following decoupling events, remains inadequately tested. In damselfishes (Pomacentridae), a ceratomandibular ligament links the hyoid bar and lower jaws, coupling two main morphofunctional units directly involved in both feeding and sound production. Here, we test the decoupling hypothesis by examining the evolutionary consequences of the loss of the ceratomandibular ligament in multiple damselfish lineages. As predicted, we find that rates of morphological evolution of trophic structures increased following the loss of the ligament. However, this increase in evolutionary rate is not associated with an increase in trophic breadth, but rather with morphofunctional specialization for the capture of zooplanktonic prey. Lineages lacking the ceratomandibular ligament also shows different acoustic signals (i.e. higher variation of pulse periods) from others, resulting in an increase of the acoustic diversity across the family. Our results support the idea that trait decoupling can increase morphological and behavioural diversity through increased specialization rather than the generation of novel ecotypes.

1. Introduction

Trait decoupling, the process by which evolutionary release of constraints via loss of linkage and/or repetition of elements permits formerly integrated structures to become specialized, exists as one of the most important principles of evolutionary morphology for explaining the diversity of organismal form [1–3]. Trait decoupling can be viewed as a mechanism that increases modularity, i.e. an increase in the number of phenotypic subunits on which selection can independently act to diversify the phenotype [4,5]. Although related hypotheses of genetic and developmental modularity have been widely examined [6,7], explicit tests of the evolutionary consequences of decoupling of organismal traits remain scarce. Liem's concept of modular multiplicity is one of the earliest and most influential formulations of this idea [8], and posits that the functional decoupling between the oral jaws (used for prey catching) and the pharyngeal jaws (used to prepare the prey before ingestion) may have been a key to the success of cichlids and other 'labroid' fishes [9,10] at multiple stages of their extraordinary radiation. Such a functional decoupling between these jaws allowed them to adapt to multiple prey types [8,11].

Influential, the concept of decoupling has received empirical supports at various organismal levels (see examples in [4,12]). Lauder illustrated decoupling of primitively coupled biomechanical linkage systems of muscles and

bones in the head of certain ray-finned fishes is correlated with greater diversity of jaw structure and function than occurs in fishes with coupled system [2]. Muscle duplication has been shown to increase diversity of prey-processing motor patterns within tetraodontiform fishes [13,14], and decoupling is associated with greater morphological variability of associated structures than outgroups having no such decoupled systems [15]. However, key predictions of the hypothesis of decoupled systems regarding shifts in the tempo and the mode of trait evolution remain untested by modern phylogenetic comparative approaches.

The skull of damselfishes (Pomacentridae) provides an opportunity to test hypotheses of morphological trait decoupling. Across most of the 392 species within this family [16], the ceratomandibular (cmd) ligament creates a tight linkage between the hyoid bar and the lower jaw [17,18] (figure 1). This linkage holds biomechanical significance for two different systems. First, the tight connection between the lower jaws and branchial basket couples morphological units that are used during prey capture and prey transport [19,20], and may act as an evolutionary constraint partially explaining the well-documented lack of morphological diversity in oral jaws within damselfishes [21,22]. Indeed, we hypothesize the cmd ligament may act as a physical constraint limiting evolutionary shape variation of oral jaws. Second, the cmd ligament is also involved in sound production during courtship and agonistic interactions [23–26]. During simultaneous neurocranium elevation and hyoid depression, it acts as a cord, forcing rapid mouth closing [18] (figure 1). The forceful contact of the teeth of the upper and lower jaws is responsible for producing pulsed sounds [18,27]. As a result of the cmd ligament, the hyoid and mandible represent a coupled system that is subjected to, at least, two distinct functional demands: feeding and sound production.

Although the cmd ligament is considered to be a synapomorphy for the Pomacentridae [17], we recently discovered that it is absent in several species. The loss of this ligament in independent damselfish lineages provides a novel opportunity to test key predictions of the trait decoupling hypothesis. All previous tests of the decoupling hypothesis have been restricted to functionally related trait systems such as the pectoral girdle involved in locomotion of frogs [28] or the musculoskeletal system used for feeding in catfishes [15]. However, if decoupling underlies diversity on the scale envisioned by Liem [8], we should expect to find a strong signal of diversification both within and across disparate functional systems which rely upon the same, previously coupled structures. We tested this prediction in damselfishes by asking if the loss of the cmd ligament relaxes constraint and promotes the diversification of the trophic and acoustic systems of damselfishes. We used comparative phylogenetic analyses combined with new morphological and functional data to test whether the tempo and mode of damselfish evolution changed following the loss of the cmd ligament and to assess levels of acoustic diversity in species with and without the ligament.

2. Material and methods

(a) Morphological and trophic data

We studied a combination of specimens collected in the field (Corsica, French Polynesia, Hawaii, Japan, Madagascar, Papua New Guinea and Taiwan) and accessioned museum specimens

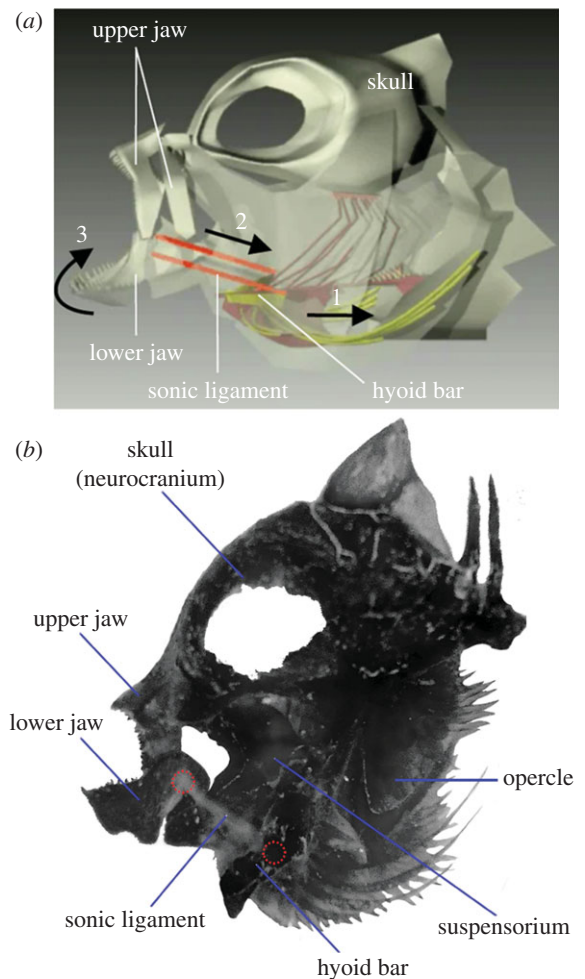


Figure 1. (a) Schematic representation of the sound-production mechanism, illustrating the movement of skeletal components (modified from [18]). Lowering the hyoid bar (1) stretches the sonic ligament (or ceratomandibular ligament) (2), and the jaws close the mouth (3) by rotating around the mandible articulation on the quadrate. Further details and videos illustrating the sound production mechanism are provided in [18]. (b) Lateral view of the skull in *Amphiprion clarkii*. All the skeletal units from the left side (i.e. jaw, cheek and opercle) and the branchial basket were removed in order to clearly show an internal view of the right side. The insertion points of the sonic ligament on the mandible and the ceratohyal (hyoid bar) are highlighted by dotted red circles.

in the morphological analyses. The complete list of representatives of species studied and their accession number is available in the electronic supplementary material, table S1. Methods for field collections were described in Frédérich & Vandewalle [29] and followed approved animal care protocols. We dissected and collected information about the presence/absence of the cmd ligament within 124 species (electronic supplementary material, table S1) represented in the Frédérich *et al.* time-calibrated phylogeny [21], which is used throughout the article. The large size of the cmd ligament (figure 1) makes its presence/absence easy to assess through dissections of fresh, conserved in alcohol or *in toto* stained specimens [30]. We studied overall body and oral jaws (i.e. mandible and premaxilla) shape from 392 and 519 adult specimens from 107 and 114 damselfish species, respectively. Sample sizes within species ranged between one and 22 individuals (median = three individuals; electronic supplementary material, table S1). We photographed specimens using digital cameras. We first cleared the jaws and then stained them with alizarin red S [30], to study the mandible and the premaxillary bone. We photographed the left unit using a digital camera installed on

a binocular microscope. We further conducted geometrical morphometric analyses [31,32] and recorded the x -, y -coordinates of the homologous landmarks (electronic supplementary material, figure S1) using TRPSDIG [33]. All the details about the generation of shape data are provided in Fr  d  rich *et al.* [21]. We used species scores along principal component axis for exploring phenotypic diversification during evolution. We assigned the 124 studied species to one of three commonly recognized trophic groups [34] based on literature review: (i) pelagic feeders that suck planktonic copepods, (ii) benthic feeders that graze filamentous algae or bite coral polyps, and (iii) an intermediate group, which feeds on planktonic prey, small benthic invertebrates and algae in variable proportions (electronic supplementary material, table S1).

(b) Phylogeny and stochastic mapping

The time-calibrated phylogeny is described in Fr  d  rich *et al.* [21], and all details concerning DNA extraction, sequence alignment, fossil calibration, and divergence time estimation can be found therein. From the Bayesian posterior distribution generated by BEAST v. 1.6.2 [35], we randomly sampled 100 trees that we used throughout the article as a way of including uncertainty in tree topology and branch length into our phylogenetic comparative analyses.

We used stochastic character mapping [36] to infer possible histories of the cmd ligament. The stochastic mapping was produced using the function `make.simmap` in the `phytools` package (v. 0.2-27) [37] for R [38]. For the parametrization of `make.simmap`, we used the estimated ancestral state, and a transition matrix with unequal rates estimated from our empirical data. We then sampled 100 character histories for each of the 100 trees generating 10 000 character maps. These character maps allowed us to incorporate the uncertainty associated with the tree topology, branch lengths and timing of the transitions between the morphological states. For an illustrative purpose, we also used the function `densityMap` in `phytools` [37] to summarize the generated histories of the cmd ligament on the consensus time-tree.

(c) Lineage diversification

If decoupling permits novel opportunities for ecological diversification through the release of evolutionary constraint, then we predicted that the tempo of lineage diversification should change following the decoupling event. We used the ‘binary state speciation extinction’ (BiSSE) method [39] to test whether the loss of the cmd ligament triggers an elevated rate of speciation during the damselfish evolution. BiSSE provides a likelihood-based test of whether a discrete character (in this case, the presence or absence of the cmd ligament) influences the rate of lineage diversification. We compared the likelihoods of two models (constrained and an unconstrained) based on our empirical data (time-tree and character states at the tips). To test variation in speciation rates, the value of extinction rate was fixed ($\mu_{\text{lig}} = \mu_{\text{no lig}}$) and we compared the unconstrained model where speciation (λ) and transition (q) rate parameters are free to vary with the constrained model where the speciation rates for both character states are forced to be equal ($\lambda_{\text{lig}} = \lambda_{\text{no lig}}$). Then, the same framework was repeated to test variation in extinction rates (unconstrained model: μ and q are free to vary and $\lambda_{\text{lig}} = \lambda_{\text{no lig}}$ versus constrained model: $\lambda_{\text{lig}} = \lambda_{\text{no lig}}$ and $\mu_{\text{lig}} = \mu_{\text{no lig}}$). Difference in log-likelihoods was computed, and a χ^2 -test was used to test for significance.

(d) Ecological diversification

If decoupling promotes ecological diversification, then we predicted that cmd ligament loss would be associated with an increase in transition rate to new diet types. To test whether the loss of the cmd ligament promotes such a trophic

diversification in damselfishes, we compared transition rates with new feeding modes before and after the loss of the cmd ligament using the ‘multiple state speciation extinction’ (MuSSE) method. MuSSE is an extension of the BiSSE likelihood-based test which is described in [39,40]. For this test, we used the Pagel recoding [41] of two state characters where the first trait is related to the ligament (X : 0 = absence, 1 = presence) and the second one to the trophic group (Y : 0 = other diet, 1 = planktivory). Our choice to use two diet codes (instead of the three described above) was justified by the reduction of parameters being estimated. The matrix of transition rates used can be written as

X, Y	$0, 0_{(1)}$	$0, 1_{(2)}$	$1, 0_{(3)}$	$1, 1_{(4)}$
$0, 0_{(1)}$		q_{12}	q_{13}	q_{14}
$0, 1_{(2)}$	q_{21}		q_{23}	q_{24}
$1, 0_{(3)}$	q_{31}	q_{32}		q_{34}
$1, 1_{(4)}$	q_{41}	q_{42}	q_{43}	

The subscripts on the rate parameters refer to the beginning and ending character states for each transition, where 1 = 0, 0; 2 = 0, 1; 3 = 1, 0; 4 = 1, 1. Thus, for example, q_{12} denotes a transition from state ‘absence of the ligament, other diet’ (0, 0) to ‘absence of the ligament, planktivory’ (0, 1). To test our hypothesis about the impact of the cmd ligament on the transition rates between diet, we followed a similar approach described by Fitz-John [40]. First, we constrained our model assuming that the speciation rates (λ) and the extinction rates (μ) are equal among traits (assumptions based on our BiSSE results). We also assumed that all transition rates including a loss of the cmd ligament are equal ($q_{31} = q_{41} = q_{32} = q_{42}$) and that all transition rates including a gain of ligament are equal to zero ($q_{13} = q_{14} = q_{23} = q_{24} = 0$). Our biological assumptions allow a simplification of the model for which we estimated the probability to regain the ligament during evolution being close to zero. Then, to test whether the loss of the cmd ligament affects the rate of transition among trophic groups, MuSSE was used to compute likelihoods of our empirical data under two models, a constrained and an unconstrained model. The constrained model (null model) forced the evolutionary shifts of diet to be equal with and without the cmd ligament ($q_{12} = q_{34}$, $q_{21} = q_{43}$) and the unconstrained model allowed these parameters to vary (i.e. the rates of dietary transition are dependent on ligament state). A χ^2 -distribution with a single degree of freedom was used to test for significance.

We performed BiSSE and MuSSE analyses using the diversifit package [39] for R [36], correcting for incompletely resolved phylogeny without specifying the ligament state of the missing species [40]. Here, we assumed that the missing species are randomly distributed on the phylogenetic tree.

(e) Morphological diversification

To test whether changes in the tempo of morphological evolution through the evolutionary history of damselfishes were explained by the state (present or absent) of the cmd ligament, we used the method recently developed by Adams [42] for comparing evolutionary rates for complex, high-dimensional phenotypic traits such as shape. Under the expectation of a Brownian motion process, this test allows the comparison of shape evolutionary rates by simulations ($n = 999$ iterations) along the phylogeny and using all the shape data (i.e. all principal components of shape variables).

In addition to the visual exploration of morphospace defined by principal components of shape variables, we used the resampling procedures ($n = 2500$) implemented in `TWOGROUP` [43] to test whether the shape of damselfishes having no cmd ligament differ significantly from others. By using `TWOGROUP`, we first analysed divergence in shape without taking evolutionary history into account. Then, we compared the shape of damselfishes using phylogenetic MANOVAs in `geiger` [44].

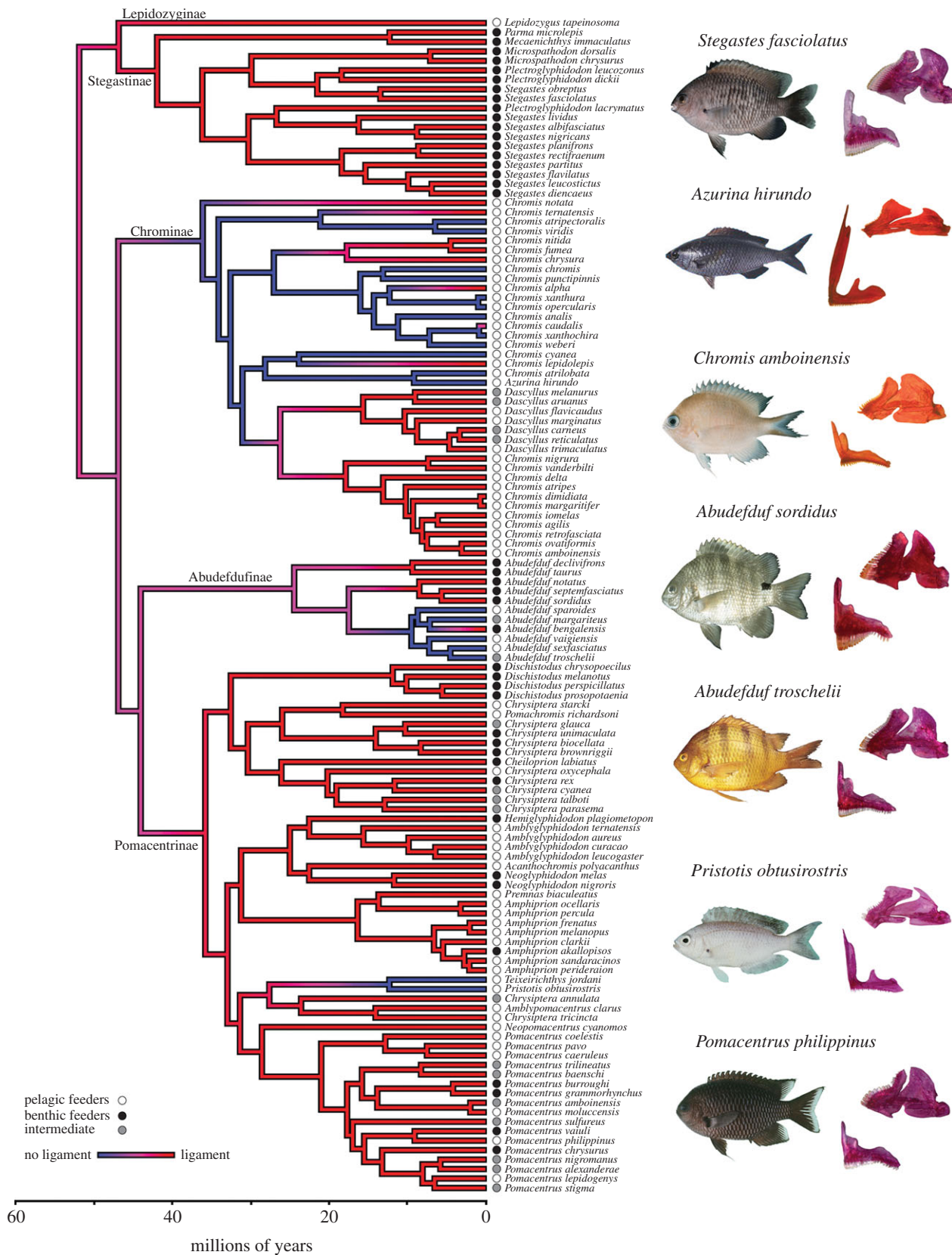


Figure 2. A time-calibrated phylogeny of damselfishes from [21] with a summary map of morphology (presence of the ceratomandibular (cmd) ligament in red and absence of the cmd ligament in blue) generated through stochastic character mapping using phytools [37]. This trait mapping highly suggests an ancestral damselfish with the cmd ligament as it is the most common root state within the 100 character histories we generated (97% of histories). Circles at the tips of the tree indicate each species diet: mainly pelagic feeders (zooplanktivorous), mainly benthic feeders (including algivorous and coralivorous), and an intermediate group including omnivorous species feeding on planktonic prey, small benthic invertebrates and filamentous algae in variable proportions. Photos illustrating the morphological diversity of body, mandible and premaxilla shapes among damselfishes having or not having the ligament are also shown across the phylogeny. The five subfamilies are highlighted: Lepidozyginae, Stegastinae, Chrominae, Abudefdufinae and Pomacentrinae.

Table 1. Results from comparisons of morphological evolutionary rates between the damselfish species lacking the ceratomandibular ligament and the ones having this ligament. The estimated rates of morphological evolution using multivariate data are also provided (mean \pm s.d.) and the ratio between them ($\sigma_{\text{mult.A}}^2/\sigma_{\text{mult.B}}^2$).

	$\sigma_{\text{no ligament}}^2$	$\sigma_{\text{ligament}}^2$	$\sigma_{\text{mult.A}}^2/\sigma_{\text{mult.B}}^2$	<i>p</i> -values
body	$1.51 \pm 0.54 \times 10^{-5}$	$0.98 \pm 0.14 \times 10^{-5}$	1.3920	0.001
mandible	$6.96 \pm 0.21 \times 10^{-5}$	$3.45 \pm 0.36 \times 10^{-5}$	1.9139	0.001
premaxilla	$11.4 \pm 1.94 \times 10^{-5}$	$4.94 \pm 0.48 \times 10^{-5}$	2.3251	0.001

(f) Sound variation

Functional studies have demonstrated that an intact cmd ligament is necessary for sound production in some damselfishes [18], and thus we predicted that lineages which have lost the cmd ligament may be mute. Alternatively, if the loss of the cmd ligament represents a decoupling for the acoustic system, then we predicted that lineages lacking this structure would show greater diversity in sounds owing to the release of evolutionary constraint on the integrated hyoid and mandible. To test this hypothesis, we compared the sounds of 13 damselfishes: 11 species having the cmd ligament and two phylogenetically closely related species lacking it. The data for *Amphiprion* and *Dascyllus* species are from [45] and [46], respectively. Recordings of sound production in the new species followed the protocol of Colleye & Parmentier [23]. Following previous acoustic studies in damselfishes [23,26,45], we carefully selected the sound parameters in our comparative study, because all (i.e. sound duration, number of pulses in a sound, pulse period, pulse length, dominant frequency and relative intensity) may not be relevant for interspecific comparisons. For example, the dominant frequency and the pulse duration are only related to fish size [45,47], and the number of pulses in a sound could be simply owing to its motivational state [24]. Consequently, we focused mainly on the pulse period, i.e. the average peak-to-peak interval between consecutive sounds.

3. Results

We identified 19 species lacking the cmd ligament (electronic supplementary material, table S1) among the 124 dissected adult specimens. The species lacking the cmd ligament belong to five genera: *Abudefduf*, *Chromis*, *Azurina* and the monotypic *Pristotis* and *Teixeirichthys*. Stochastic mapping of this trait on a time-calibrated phylogeny suggested that the cmd ligament was present in the common ancestor of damselfishes (97% posterior probability) and independently lost at least three times (within Chrominae, Abudefdufinae and Pomacentrinae; figure 2). We observed no great anatomical variation among species having the cmd ligament, except in *Abudefduf sordidus* and *Abudefduf septemfasciatus*. In both species, the cmd ligament is fused with the geniohyoideus muscle, which is attached to the ventral part of the mandible, and has probably become a tendinous projection of it.

(a) Lineage diversification

We did not record changes in the rate of cladogenesis following the disappearance of the ligament. Indeed, the results of BiSSE analyses provide no support for a two-rate model where the cmd influenced the rate of speciation (lnL unconstrained = -487.51 , lnL constrained = -487.75 , $\chi^2 = 0.47$, $p = 0.55$; $\lambda_{\text{lig}} = 0.102 \pm 0.006$, $\lambda_{\text{no lig}} = 0.136 \pm$

0.016) or extinction (lnL unconstrained = -487.75 , lnL constrained = -487.76 , $\chi^2 = 0.02$, $p = 0.92$; $\mu_{\text{lig}} = 0.003 \pm 0.004$, $\mu_{\text{no lig}} = 0.003 \pm 0.005$) of damselfishes.

(b) Ecological diversification

We found that a model where rates of dietary transitions were dependent on ligament state was significantly better than a model where dietary shifts were independent (lnL-dependent = -569.78 , lnL-independent = -563.62 , $\chi^2 = 12.32$, $p = 0.003$). However, parameter estimates revealed that only transition rates to zooplanktivory increased by a factor 10 once the ligament was lost (electronic supplementary material, table S2). Visual inspection of diet changes on the pomacentrid phylogeny reinforced the MuSSE results, revealing all but two instances of cmd ligament loss to be associated with a single feeding mode, zooplanktivory (figure 2).

(c) Morphological diversification

We found that the net morphological evolutionary rates differ significantly between species having and lacking the cmd ligament (table 1). For each morphological entity, the rate of shape evolution (σ^2) is higher (more than 1.3x) for the lineages lacking the cmd ligament (table 1). Moreover, visual exploration of morphospace revealed that cmd ligament loss is associated with the evolution of new phenotypes (figure 3). Indeed, species without the cmd ligament occupy a particular subspace of the morphospace (figure 3) and differ significantly in shape from the others (TwoGROUP results, body: F -score = 6.6, $p < 0.001$; mandible: F -score = 21.1, $p < 0.001$; premaxilla: F -score = 62.4, $p < 0.001$). Knowing that most of the species lacking the cmd ligament are zooplanktivorous (figure 2 and the electronic supplementary material, table S1), we repeated the tests by only comparing the shape of zooplanktivorous species and once again found significant differences between the species having the ligament and the species without it (TwoGROUP results, body: F -score = 6.1, $p < 0.001$; mandible: F -score = 13.3, $p < 0.001$; premaxilla: F -score = 50.8, $p < 0.001$). Phylogenetic MANOVAs strengthen these first results from TwoGROUP, showing species lacking the ligament significantly differ in shape from the ones having it (table 2). Within zooplanktivorous species, the ones lacking the cmd ligament observed a strong shape divergence for the premaxilla during evolution (table 2). The species lacking the cmd ligament show slender body with shorter dorsal and anal fins; longer and thinner mandible with an articulo-angular relatively greater; longer ascending process of the premaxilla with a short maxillad spine than other damselfishes and

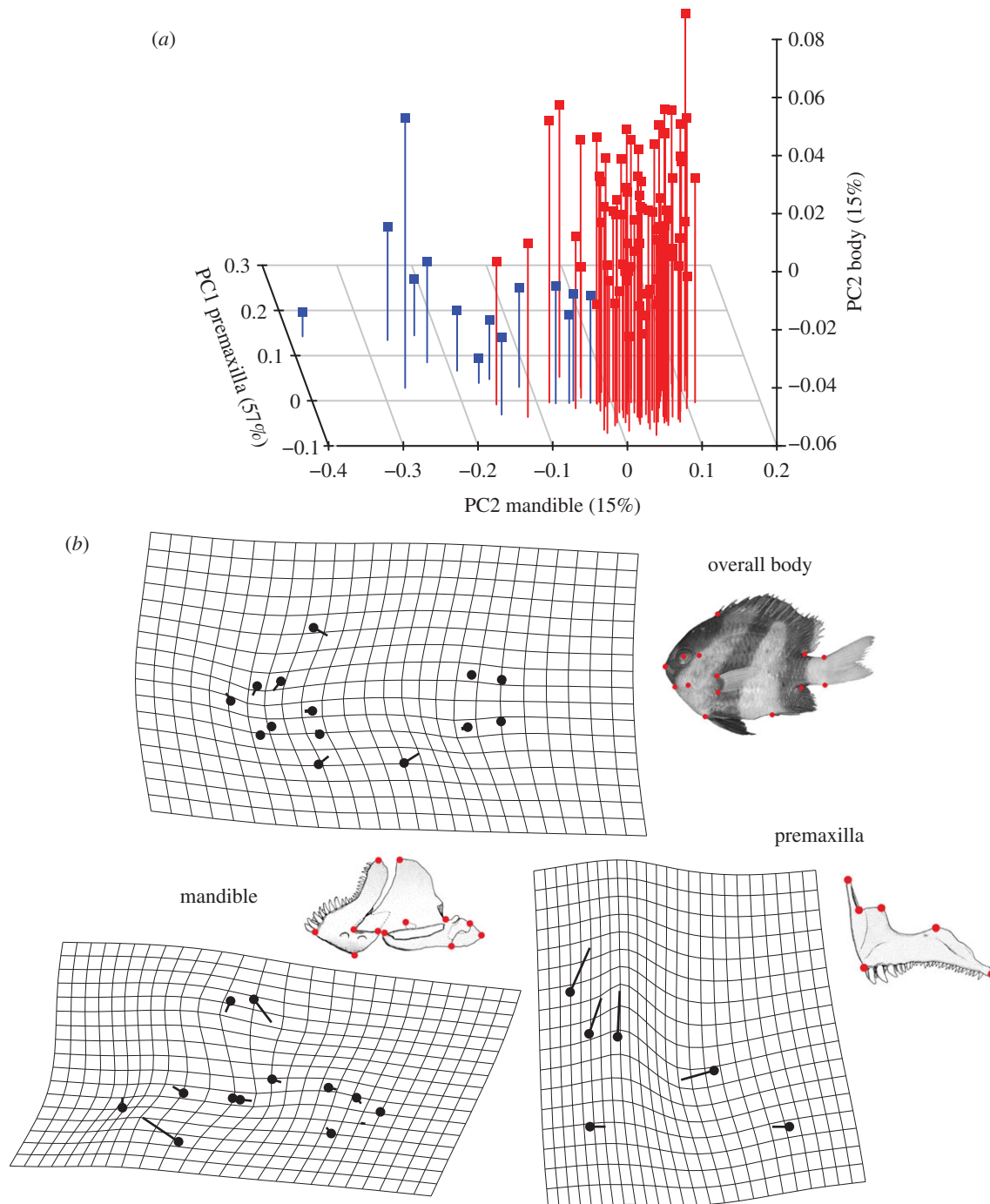


Figure 3. (a) Three-dimensional-morphospace of damselfishes made by principal components of each studied unit (body, mandible and premaxilla). The species lacking the ceratomandibular (cmd) ligament are highlighted in blue and the species having the ceratomandibular ligament are in red. The principal components (PCs) used to produce this morphospace are those revealing the greatest differences between both morphological groups. The percentage of shape variance summarized by each PC are given in brackets. (b) Deformation grids illustrating the shape variation between the zooplanktivorous species having the cmd ligament (black dot) and the ones lacking this ligament (extremity of the vector) for every studied unit. The shape differences have been exaggerated for better visualization (overall body: $\times 2$, mandible: $\times 1.7$, premaxilla: $\times 1.2$).

other zooplanktivorous species (figures 2 and 3 and the electronic supplementary material, figure S2).

(d) Sound variation

We found that all species produced similar pulsed sounds (figure 4) [24,45], suggesting that species without the ligament still relied upon forceful contact between the teeth of the oral jaws to generate sound. However, consistent with the decoupling hypothesis enabling acoustical diversity, the two species lacking the cmd ligament showed much greater variances in pulse period than other damselfishes (Levene's test, $W = 79.18$; $p < 0.001$; figure 4).

4. Discussion

Our results reveal that the cmd ligament has acted as a major control on ecomorphological and acoustical diversity throughout the evolutionary history of Pomacentridae and shed new insights into the role of decoupling in generating biodiversity.

For the first time, to our knowledge, we have shown that trait decoupling alters the tempo and the mode of phenotypic diversification, leading to greater morphological diversity in trophic structures. However, ecological diversification is not a mandatory consequence of trait decoupling [8]. Although the cmd ligament does not alter the rate of lineage

Table 2. Results from phylogenetic MANOVA comparing shape divergence between the damselfish species lacking the ceratomandibular ligament and the ones having this ligament. We first compared shape including all the damselfishes and then we tested shape divergence between zooplanktivorous species. Significant *p*-values, where significance was obtained by multivariate BM simulations ($n = 10\,000$) on the phylogeny, are indicated in *italics*.

	d.f.	Wilk's lambda	<i>p</i> -values
all the species			
body	1;112	0.357	<i>0.002</i>
mandible	1;105	0.295	<i>0.003</i>
premaxilla	1;105	0.292	<i>1×10^{-4}</i>
zooplanktivorous species			
body	1;59	0.251	0.154
mandible	1;50	0.216	0.219
premaxilla	1;50	0.265	<i>0.001</i>

diversification, the loss of this ligament is associated with ecological opportunity for greater specialization. Indeed, MuSSE results (electronic supplementary material, table S2) show that the loss of the cmd ligament has not broadly increased trophic diversity in damselfishes, but instead has led to increased specialization of pelagic feeding. Thus, we suggest that the loss of the ligament obliges greater specialization through loss of feeding versatility that is only possible when the ligament is present.

The study of morphological diversification shows that the ligament loss leads to higher rates of shape evolution (table 1), consistent with the hypothesis that decoupling acts as a release from evolutionary constraints. Moreover, the study of morphospace (figure 3) shows that the ligament loss opens a new axis of morphological variation corresponding to the entrance in a new adaptive zone. Among the various shape differences between the species having and lacking the cmd ligament, the most divergent structure is the premaxilla (table 2). An ecomorphological interpretation of shape variations observed in the damselfishes lacking the cmd ligament suggests an optimization of ram feeding (or ram-jaw feeding *sensu* [48]) in these zooplanktivorous species. Indeed, as exemplified in many fish groups, a slender body is related to a pelagic lifestyle and probably reduces drag during steady swimming while searching preys [49]. Lengthened mandibles and a long ascending process of the premaxillary bones improve the mouth protrusion which is one way to optimize the catch of zooplanktonic prey [48,50]. Various factors may counter the theoretical expectation that a clade shows an increase in ecological diversification following a decoupling event [8] and differences in evolutionary outcomes probably result from historical or clade-specific factors. Here, we hypothesize that the ecomorphological diversity of damselfish did not increase dramatically after the decoupling event owing to the very high levels of competition present in coral reef environments or related to other internal constraints.

Morphological decoupling of the hyoid and mandible significantly impacts the sound production system in damselfishes. Although experimental transection of the cmd ligament results in the loss of sound production in damselfishes [18], evolutionary loss of this structure does not

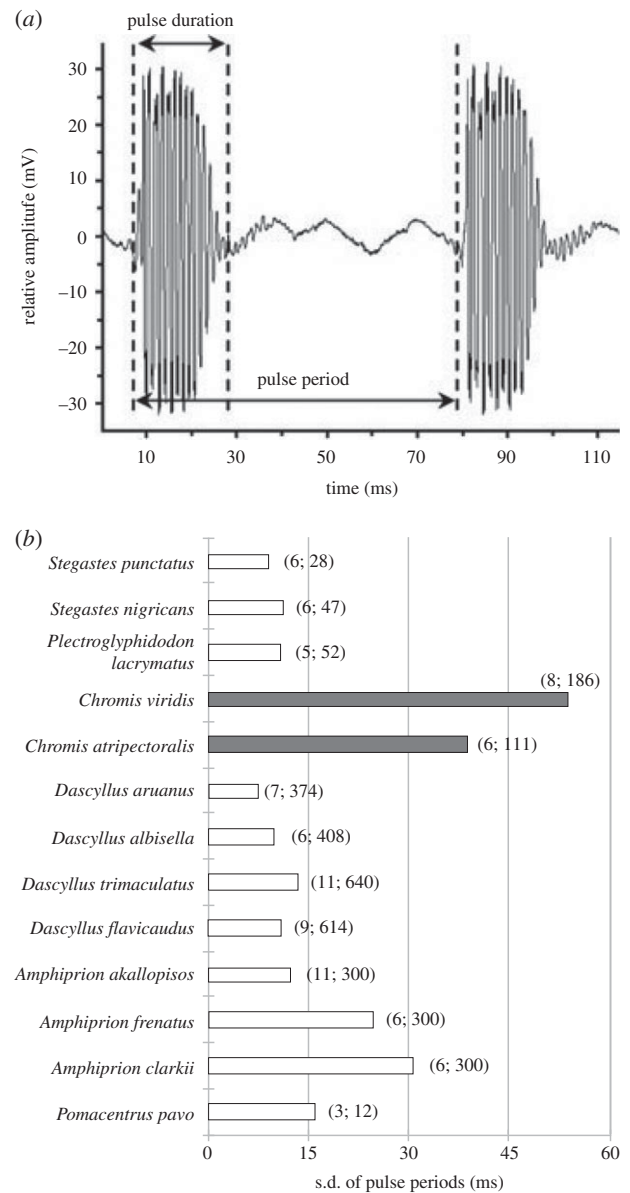


Figure 4. (a) Example of pulsed sounds in *Amphiprion akallopisos* (modified from [47]). This oscillogram illustrates two main sonic variables: the pulse duration and the pulse period. (b) Standard deviation of the pulse period in sounds produced by 13 species of damselfishes. The two *Chromis* species, which do not possess the ceratomandibular (cmd) ligament (grey histograms), show highly variable pulse periods during sound emissions in comparison with the species with the cmd ligament (white histograms). The figures between brackets give the number of fish studied and the number of sounds analysed, respectively.

result in mute lineages. Instead, acoustic diversity within species and across the family is promoted. Our analyses reveal that all the studied species can produce sounds and the species without the cmd ligament show a greater variation of the pulse periods than the species having this ligament (figure 4). This variability in the length of pulse periods can be explained by the mechanism of sound production. As demonstrated by Parmentier *et al.* [18], damselfishes can produce sounds by rapid mouth closing movements, and this fast jaw slam is allowed by the cmd ligament. We hypothesize that sound producing in species which lack the cmd ligament rely upon actions of the sternohyoidieus, hypaxial, expaxial, levator operculi and jaw adductor muscles to open and close their mouths, and that the variability of the pulse period reflects a smaller degree

of coordination among these structures. The studied *Chromis* species lacking the cmd ligament are sister-species (figure 2) and do not represent evolutionarily independent losses of the ligament. This may limit the power of our statement, but Lobel & Kerr [51] reported similar high variance of pulse periods in *Abudefduf sordidus*, a species from another subfamily (Abudefdufinae, figure 2) where the cmd linkage became a tendinous projection of the geniohyoideus muscle. The peculiar anatomy of *A. sordidus* probably does not allow the production of sounds by jaw-slammings involving the cmd ligament [18], inducing higher variations in acoustic signals as in *Chromis viridis* and *Chromis atripectoralis* lacking the cmd ligament. Currently, the sounds of species without cmd ligament belonging to the subfamily Pomacentrinae (i.e. *Pristotis obtusirostris* and *Teixeirichthys jordani*) are unknown and do not allow further comparisons. However, the same kind of acoustic divergence is observed within two of the three subfamilies, including species without the cmd ligament. Beyond the functional basis of sound production, this study and others [23–26,45,46,51,52] suggest that acoustic signals are a major component of communication in damselfishes and that the ability to produce sounds is an important character underlying their evolution.

Currently, we do not know the forces selecting the damselfishes lacking cmd ligament. Trophic selection could drive the initial divergence by promoting specialization on zooplanktivory, which is then followed by acoustic variation. On the other hand, the theory of social selection, well known to promote rapid trait divergence, could provide another evolutionary scenario [53–55]. Social selection on signals can be very strong in damselfishes, which are territorial and highly aggressive, especially during mating behaviours [56,57]. Thus, it could be possible that social selection on acoustic signals is driving the initial divergence, favouring the ligament loss in some lineages, which is then followed by the observed changes in feeding behaviour and trophic morphology.

Trait decoupling has been thought to influence the pattern of diversification of a clade, but changes in evolutionary rate following decoupling have not been previously documented. Our study illustrates the cmd ligament is a key trait to understanding diversification processes of one of the most ecologically dominant families of reef fishes. We show

the cmd ligament clearly impacts the ecomorphological (i.e. trophic adaptation) and the acoustical (i.e. communication) diversity of damselfishes which are two of the main axes of diversification in vertebrates [58]. Although additional examples are needed, damselfishes illustrate that trait decoupling is a source of rapid diversification but does not necessarily allow the production of multiple new ecotypes. Social selection, the availability of untapped niches and the evolvability of the system may be different factors explaining this evolutionary pattern.

Overall, the loss of the cmd ligament can be viewed as having a cascade of diversity promoting effects across discrete trait systems in damselfishes. Although the decoupling hypothesis was originally invoked to explain vast differences in morphology and ecology observed in cichlids [8], tests of this hypothesis have generally focused on diversity patterns within a single trait system [15,28]. Our results help reveal how trait decoupling, through a relatively simple evolutionary release of constraints via the loss of a ligament, can have wide reaching effects on diversity across trait systems, providing a crucial quantitative link between a widely held macroevolutionary idea and empirical patterns of biodiversity.

Methods for field collections followed approved animal care protocols.

Acknowledgements. We thank P. Vandewalle, Y. Nakamura, V. Liu and D. Mann for collecting and providing damselfish species from Papua New Guinea, Japan, Taiwan and Hawaii, respectively. J. E. Randall (Bishop Museum) kindly provided images of damselfishes. We thank A. C. Bentley (KUNHM), M. McGrouther (AM), E. Balart Paez (CIBNOR), M. Sabaj (ANSP), R. Feeney (NHMLA), J. Williams and D. Pitassy (NMNH), D. Catania and M. Hoang (CAS), R. Robins (FMNH) and R. Pyle (Bishop Museum) for kindly providing a part of the specimens examined in this study. We thank Drs J. E. Randall, G. R. Allen and R. Aguilar-Medrano for help with identification of specimens. Helpful suggestions on the manuscript at various stages were provided by David Collar and three anonymous reviewers.

Funding statement. This research was supported by FRS-FNRS grants (FRFC 2.4.583.05) and by NSF grants (DEB 0842397, 0918748). B.F. is a Postdoctoral Researcher at the F.R.S.-FNRS (Belgium). G.L. is supported by the University of Lausanne research fund and this work received support from the Vital-IT facilities from the Swiss Institute of Bioinformatics.

References

1. Vermeij GJ. 1973 Adaptation, versatility, and evolution. *Syst. Zool.* **22**, 466–477. (doi:10.2307/2412953)
2. Lauder GV. 1981 Form and function: structural analysis in evolutionary morphology. *Paleobiology* **7**, 430–442.
3. Wainwright PC. 2007 Functional versus morphological diversity in macroevolution. *Annu. Rev. Ecol. Syst.* **38**, 381–401. (doi:10.1146/annurev.ecolsys.38.091206.095706)
4. West-Eberhard MJ. 2003 *Developmental plasticity and evolution*. New York, NY: Oxford University Press.
5. Klingenberg CP. 2008 Morphological integration and developmental modularity. *Annu. Rev. Ecol. Syst.* **39**, 115–132. (doi:10.1146/annurev.ecolsys.37.091305.110054)
6. Cheverud JM. 1996 Developmental integration and the evolution of pleiotropy. *Am. Zool.* **36**, 44–50.
7. Klingenberg CP, Leamy LJ, Cheverud JM. 2004 Integration and modularity of quantitative trait locus effects on geometric shape in the mouse mandible. *Genetics* **166**, 1909–1921. (doi:10.1534/genetics.166.4.1909)
8. Liem KF. 1973 Evolutionary strategies and morphological innovations: cichlid pharyngeal jaws. *Syst. Zool.* **22**, 425–441. (doi:10.2307/2412950)
9. Liem KF, Sanderson SL. 1986 The pharyngeal jaw apparatus of labrid fishes: a functional morphological perspective. *J. Morphol.* **187**, 143–158. (doi:10.1002/jmor.1051870203)
10. Hulsey CD, de Leon FJG, Rodiles-Hernandez R. 2006 Micro- and macroevolutionary decoupling of cichlid jaws: a test of Liem's key innovation hypothesis. *Evolution* **60**, 2096–2109. (doi:10.1111/j.0014-3820.2006.tb01847.x)
11. Galis F, Drucker EG. 1996 Pharyngeal biting mechanics in centrarchid and cichlid fishes: insights into a key evolutionary innovation. *J. Evol. Biol.* **9**, 641–670. (doi:10.1046/j.1420-9101.1996.9050641.x)
12. Taylor JS, Raes J. 2004 Duplication and divergence: the evolution of new genes and old ideas. *Annu. Rev. Genet.* **38**, 615–643. (doi:10.1146/annurev.genet.38.072902.092831)
13. Friel JP, Wainwright PC. 1999 Evolution of complexity in motor patterns and jaw musculature

- of tetraodontiform fishes. *J. Exp. Biol.* **202**, 867–880.
14. Friel JP, Wainwright PC. 1998 Evolution of motor patterns in tetraodontiform fishes: does muscle duplication lead to functional diversification? *Brain Behav. Evol.* **52**, 159–170. (doi:10.1159/00006560)
 15. Schaefer SA, Lauder GV. 1996 Testing historical hypotheses of morphological change: biomechanical decoupling in loricarioid catfishes. *Evolution* **50**, 1661–1675. (doi:10.2307/2410902)
 16. Eschmeyer WN. 2014 Catalog of fishes: genera, species, references (<http://research.calacademy.org/research/ichthyology/catalog/fishcatmain.asp>). (accessed 30 April 2014)
 17. Stiassny MLJ. 1981 The phyletic status of the family Cichlidae (Pisces, Perciformes): a comparative anatomical investigation. *Neth. J. Zool.* **31**, 275–314. (doi:10.1163/002829681X00013)
 18. Parmentier E, Colleye O, Fine ML, Frédérick B, Vandewalle P, Herrel A. 2007 Sound production in the clownfish *Amphiprion clarkii*. *Science* **316**, 1006. (doi:10.1126/science.1139753)
 19. Osse JWM. 1969 Functional morphology of the head of the perch (*Perca fluviatilis* L.): an electromyographic study. *Neth. J. Zool.* **19**, 289–392. (doi:10.1163/002829669X00134)
 20. Liem KF, Osse JWM. 1975 Biological versatility, evolution, and food resource exploitation in African cichlid fishes. *Am. Zool.* **15**, 427–454.
 21. Frédérick B, Sorenson L, Santini F, Slater GJ, Alfaro ME. 2013 Iterative ecological radiation and convergence during the evolutionary history of damselfishes (Pomacentridae). *Am. Nat.* **181**, 94–113. (doi:10.1086/668599)
 22. Cooper WJ, Westneat MW. 2009 Form and function of damselfish skulls: rapid and repeated evolution into a limited number of trophic niches. *BMC Evol. Biol.* **9**, 24. (doi:10.1186/1471-2148-9-24)
 23. Colleye O, Parmentier E. 2012 Overview on the diversity of sounds produced by clownfishes (Pomacentridae): importance of acoustic signals in their peculiar way of life. *PLoS ONE* **7**, e49179. (doi:10.1371/journal.pone.0049179)
 24. Parmentier E, Kever L, Casadevall M, Lecchini D. 2010 Diversity and complexity in the acoustic behaviour of *Dascyllus flavicaudus* (Pomacentridae). *Mar. Biol.* **157**, 2317–2327. (doi:10.1007/s00227-010-1498-1)
 25. Parmentier E, Vandewalle P, Frédérick B, Fine ML. 2006 Sound production in two species of damselfishes (Pomacentridae): *Plectroglyphidodon lacrymatus* and *Dascyllus aruanus*. *J. Fish Biol.* **69**, 491–503.
 26. Mann DA, Lobel PS. 1998 Acoustic behavior of the damselfish *Dascyllus albisella*: behavioral and geographic variation. *Environ. Biol. Fishes* **51**, 421–428. (doi:10.1023/a:1007410429942)
 27. Colleye O, Nakamura M, Frédérick B, Parmentier E. 2012 Further insight into the sound-producing mechanism of clownfishes: what structure is involved in sound radiation? *J. Exp. Biol.* **215**, 2192–2202. (doi:10.1242/jeb.067124)
 28. Emerson SB. 1988 Testing for historical patterns of change: a case study with frog pectoral girdles. *Paleobiology* **14**, 174–186.
 29. Frédérick B, Vandewalle P. 2011 Bipartite life cycle of coral reef fishes promotes increasing shape disparity of the head skeleton during ontogeny: an example from damselfishes (Pomacentridae). *BMC Evol. Biol.* **11**, 82. (doi:10.1186/1471-2148-11-82)
 30. Taylor WR, Van Dyke GC. 1985 Revised procedure for staining and clearing small fishes and other vertebrates for bone and cartilage study. *Cybiurn* **9**, 107–121.
 31. Bookstein F. 1991 *Morphometric tools for landmark data: geometry and biology*. Cambridge, UK: Cambridge University Press.
 32. Adams DC. 2004 Character displacement via aggressive interference in Appalachian salamanders. *Ecology* **85**, 2664–2670. (doi:10.1890/04-0648)
 33. Rohlf FJ. 2004 TpsDig (version 1.40), a software program for landmark data acquisition. (Department of Ecology and Evolution, State University of New York at Stony Brook. See <http://life.bio.sunysb.edu/morph/>).
 34. Frédérick B, Fabri G, Lepoint G, Vandewalle P, Parmentier E. 2009 Trophic niches of thirteen damselfishes (Pomacentridae) at the Grand Récif of Toliara, Madagascar. *Ichthyol. Res.* **56**, 10–17. (doi:10.1007/s10228-008-0053-2)
 35. Drummond AJ, Rambaut A. 2007 BEAST: Bayesian evolutionary analysis by sampling trees. *BMC Evol. Biol.* **7**, 214. (doi:10.1186/1471-2148-7-214)
 36. Huelsenbeck JP, Nielsen R, Bollback JP. 2003 Stochastic mapping of morphological characters. *Syst. Biol.* **52**, 131–158. (doi:10.1080/10635150390192780)
 37. Revell LJ. 2012 phytools: an R package for phylogenetic comparative biology (and other things). *Methods Ecol. Evol.* **3**, 217–223. (doi:10.1111/j.2041-210X.2011.00169.x)
 38. R Development Core Team 2011 *R: a language and environment for statistical computing*. Vienna, Austria: R Foundation for Statistical Computing. See <http://R-project.org/>.
 39. Maddison WP, Midford PE, Otto SP. 2007 Estimating a binary character's effect on speciation and extinction. *Syst. Biol.* **56**, 701–710. (doi:10.1080/10635150701607033)
 40. FitzJohn RG. 2012 Diversitree: comparative phylogenetic analyses of diversification in R. *Methods Ecol. Evol.* **3**, 1084–1092. (doi:10.1111/j.2041-210X.2012.00234.x)
 41. Pagel M. 1994 Detecting correlated evolution on phylogenies: a general-method for the comparative-analysis of discrete characters. *Proc. R. Soc. Lond. B* **255**, 37–45. (doi:10.1098/rspb.1994.0006)
 42. Adams DC. 2014 Quantifying and comparing phylogenetic evolutionary rates for shape and other high-dimensional phenotypic data. *Syst. Biol.* **63**, 166–177. (doi:10.1093/sysbio/syt105)
 43. Sheets HD. 2000 *TwoGroup: testing the difference in shape between two groups*. Buffalo: Department of Physics, Canisius College. See <http://www3.canisius.edu/~sheets/morphsoft.html>.
 44. Harmon LJ, Weir J, Brock C, Glor R, Challenger W. 2008 Geiger: investigating evolutionary radiations. *Bioinformatics* **24**, 129–131. (doi:10.1093/bioinformatics/btm538)
 45. Colleye O, Vandewalle P, Lanterbecq D, Lecchini D, Parmentier E. 2011 Interspecific variation of calls in clownfishes: degree of similarity in closely related species. *BMC Evol. Biol.* **11**, 365. (doi:10.1186/1471-2148-11-365)
 46. Parmentier E, Lecchini D, Frédérick B, Brie C, Mann D. 2009 Sound production in four damselfish (*Dascyllus*) species: phyletic relationships? *Biol. J. Linn. Soc.* **97**, 928–940. (doi:10.1111/j.1095-8312.2009.01260.x)
 47. Colleye O, Frédérick B, Vandewalle P, Casadevall M, Parmentier E. 2009 Agonistic sounds in the skunk clownfish *Amphiprion akallopisos*: size-related variation in acoustic features. *J. Fish Biol.* **75**, 908–916. (doi:10.1111/j.1095-8649.2009.02316.x)
 48. Coughlin DJ, Strickler JR. 1990 Zooplankton capture by a coral-reef fish: an adaptive response to evasive prey. *Environ. Biol. Fishes* **29**, 35–42. (doi:10.1007/BF00005666)
 49. Webb PW. 1984 Body form, locomotion and foraging in aquatic vertebrates. *Am. Zool.* **24**, 107–120.
 50. Liem KF. 1993 Ecomorphology of the teleostean skull. In *The skull: functional and evolutionary mechanisms* (eds J Hanken, BK Hall), pp. 422–452. Chicago, IL: The University of Chicago Press.
 51. Lobel PS, Kerr LM. 1999 Courtship sounds of the Pacific damselfish, *Abudefduf sordidus* (Pomacentridae). *Biol. Bull.* **197**, 242–244. (doi:10.2307/1542627)
 52. Rice AN, Lobel PS. 2003 The pharyngeal jaw apparatus of the Cichlidae and Pomacentridae: function in feeding and sound production. *Rev. Fish Biol. Fish.* **13**, 433–444. (doi:10.1007/s11160-004-8794-0)
 53. Lyon BE, Montgomerie R. 2012 Sexual selection is a form of social selection. *Phil. Trans. R. Soc. B* **367**, 2266–2273. (doi:10.1098/rstb.2012.0012)
 54. Tobias JA, Montgomerie R, Lyon BE. 2012 The evolution of female ornaments and weaponry: social selection, sexual selection and ecological competition. *Phil. Trans. R. Soc. B* **367**, 2274–2293. (doi:10.1098/rstb.2011.0280)
 55. Amundsen T. 2000 Why are female birds ornamented? *Trends Ecol. Evol.* **15**, 149–155. (doi:10.1016/S0169-5347(99)01800-5)
 56. Myrberg AA, Spanier E, Ha SJ. 1978 Temporal patterning in acoustic communication. In *Contrasts in behaviour* (eds ER Reese, FJ Lighter), pp. 137–179. New York, NY: John Wiley and Sons.
 57. Siebeck UE. 2004 Communication in coral reef fish: the role of ultraviolet colour patterns in damselfish territorial behaviour. *Anim. Behav.* **68**, 273–282. (doi:10.1016/j.anbehav.2003.11.010)
 58. Streebman JT, Danley PD. 2003 The stages of vertebrate evolutionary radiation. *Trends Ecol. Evol.* **18**, 126–131. (doi:10.1016/S0169-5347(02)00036-8)