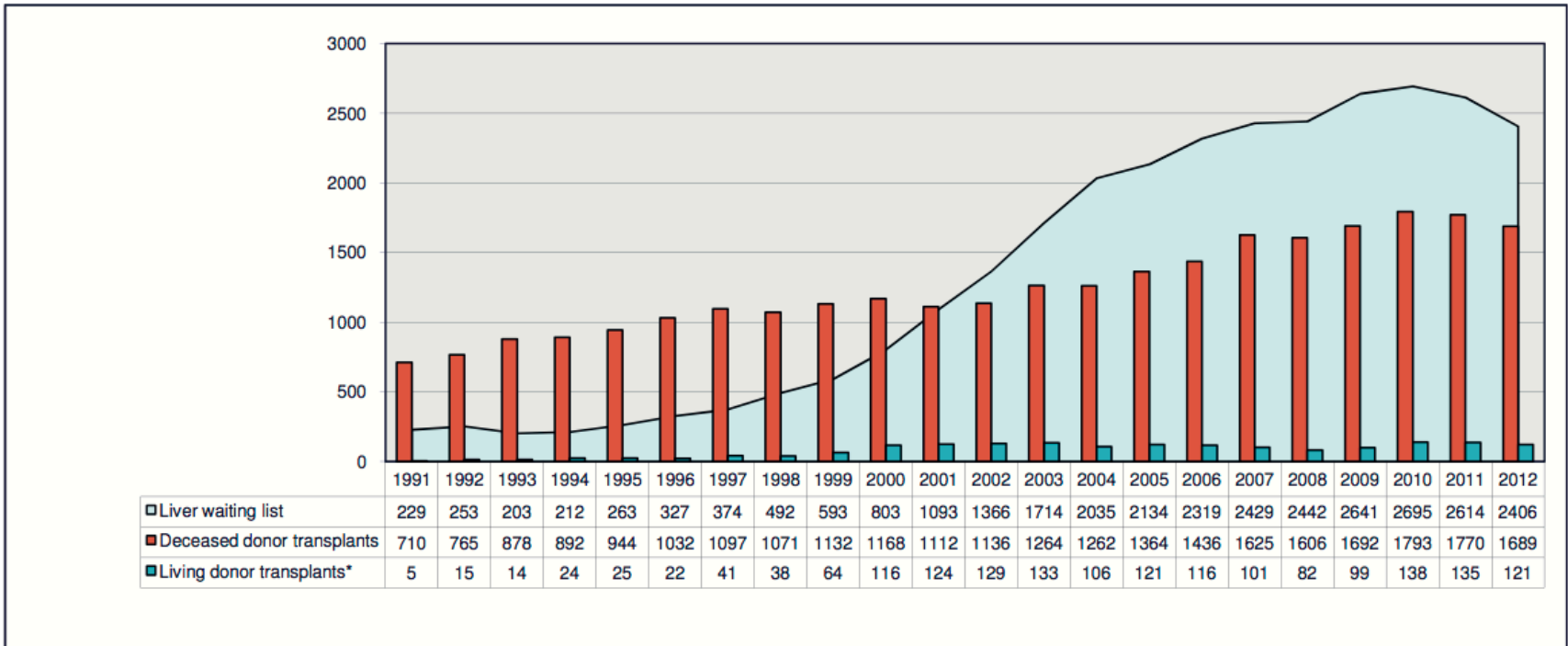


Eurotransplant liver waiting list

Figure 7.5 Dynamics of the Eurotransplant liver waiting list and liver transplants between 1991 and 2012



CONTROLLED DCD DONATION IS PART OF THE SOLUTION TO LIVER GRAFT SHORTAGE, REGARDLESS OF DONOR AGE

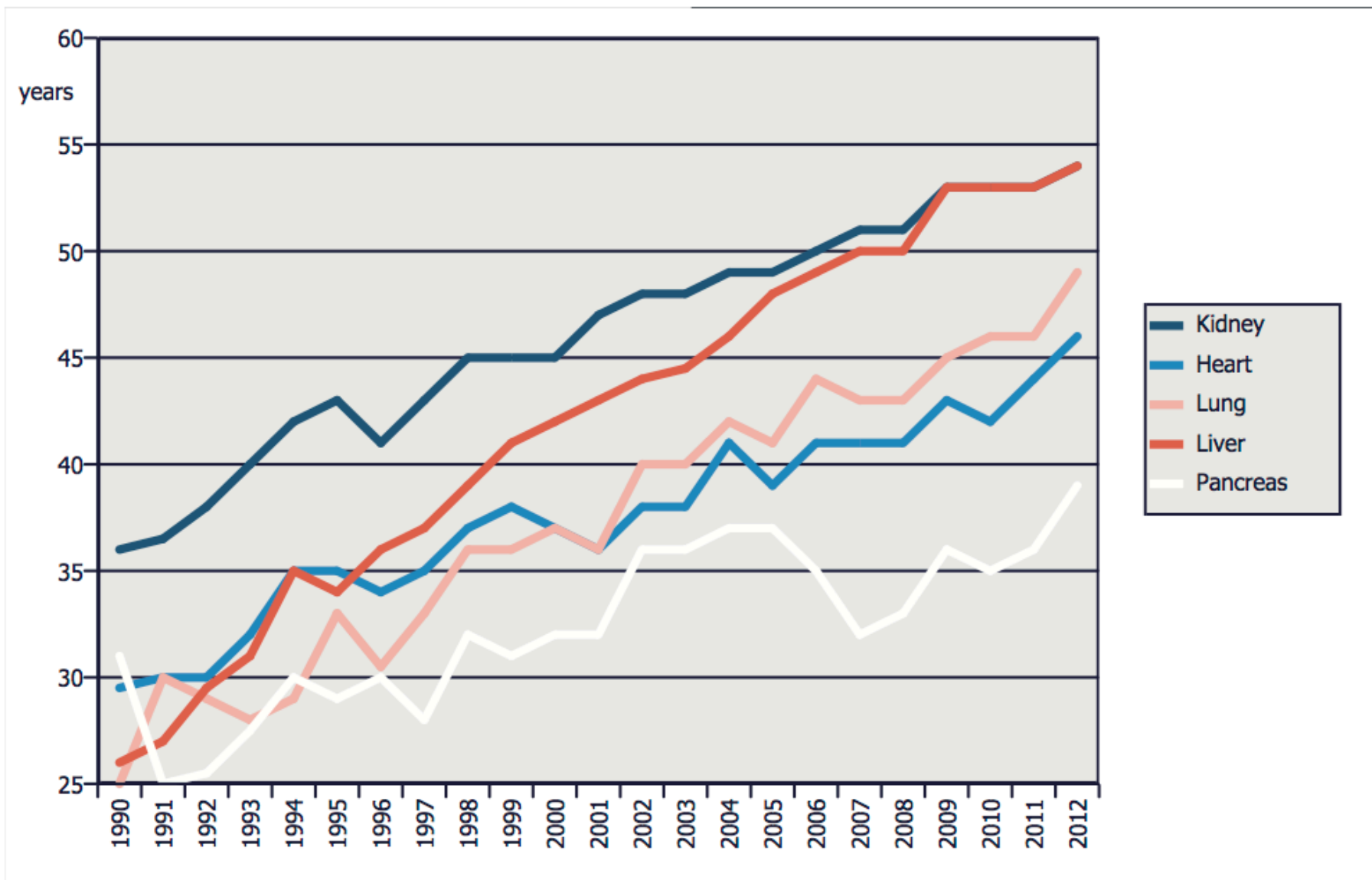
O. DETRY, N. MEURISSE, J. DELWAIDE, A. LAMPROYE, B. BASTENS, C. BRIKKO,
V. PUTZEYS, B. SERVAIS, M. MEURISSE, A. DEROOVER, P. HONORE

CHU Liege, CHC Liege, CHR Liege, CHBA Seraing
University of Liège, Belgium

Liver graft shortage: solutions?

- No missing of cadaveric brain dead donors
 - education of the population
 - education of the medical teams
 - marginal donors (or Extended Criteria Donors)
 - age
 - steatosis
 - tumors, infectious diseases...
- Splits or Living Donors LT
- NHBD or DCD

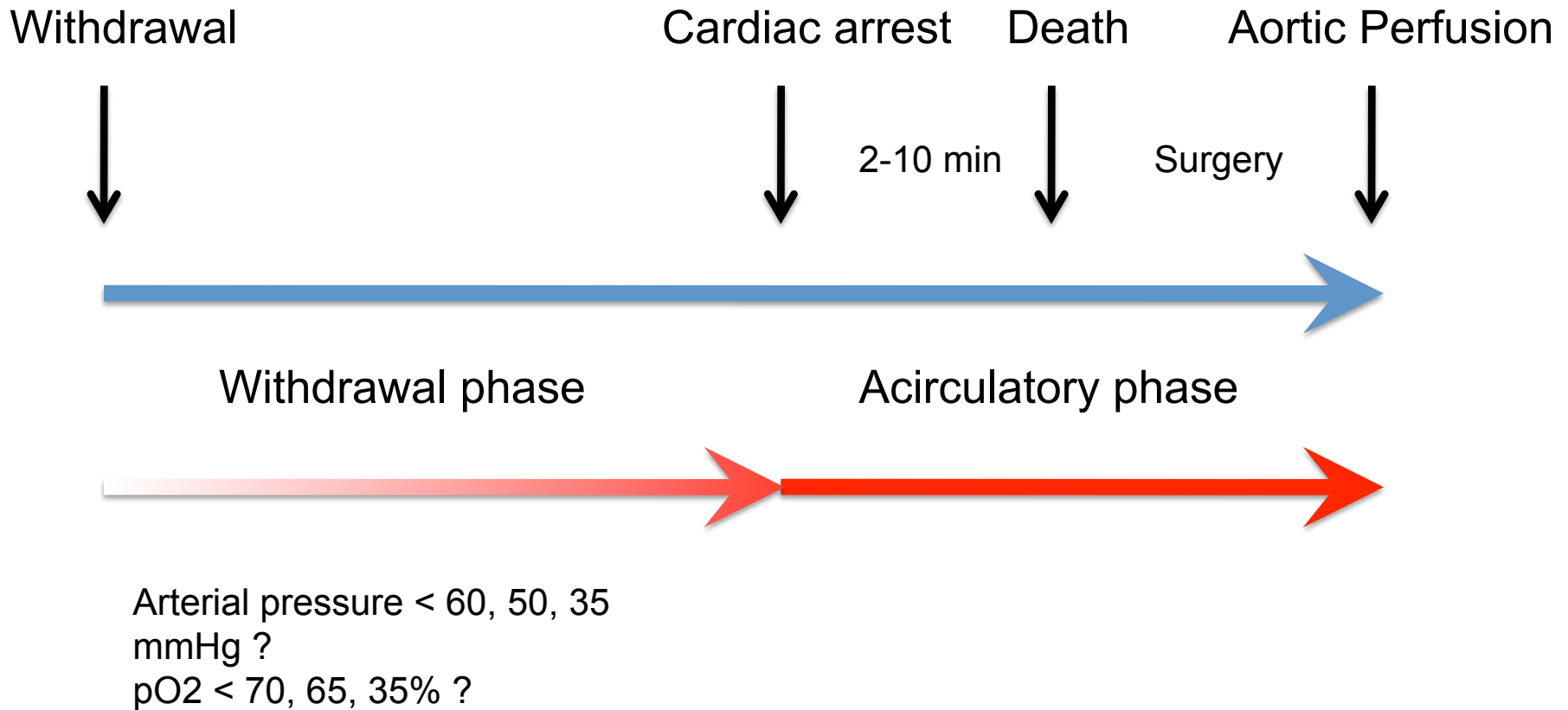
Figure 4.2 Median age of deceased donors in Eurotransplant, used for a transplant



DCD in liver transplantation

- Increased risk of PNF
- Increased risk of non-anastomotic stenoses (NAS)
- Decreased graft and patient survival
- Increase risk of retransplantation
- Interest?
- Net gain of liver grafts?
- DCD donor age limit: 50-55 years

Controlled DCD: WI



DCD-LT in Liège

- Active procurement & Tx programs
- Mainly local donors
- Procurement WI < 30 min
- Minimizing cold ischemia

- Recipients:
 - low chance to receive a graft
 - cancer (HCC, neuroendocrine)

Methods

- 70 DCD-LT between 2003 & 2012
- No criteria of age for DCD donors
- Minimum follow-up: 1 year
- Median follow-up: 43 months (12-127)
- Divided in 3 groups:
 - ≤ 55 years
 - 56-69 years
 - ≥ 70 years

Recipients' characteristics

	Group A (n=32)	Group B (n=20)	Group C (n=18)	<i>P</i>
Age (years)	58 (51.2-63)	59.5 (50.7-64)	58.5 (51.7-64.2)	0.929
Female (n/%)	3/9.3	4/20	3/16.6	0.536
Lab MELD	14.5 (11.2-17.7)	12.5 (9.2-17.7)	17 (14-25.2) #	0.032
Liver disease (n)				
HCC on cirrhotic liver	11	11	3	
Other cancers	2	1	1	
Cirrhosis without cancer	17	8	14	
reTx for HAT	2	0	0	

Recipients' characteristics

	Group A (n=32)	Group B (n=20)	Group C (n=18)	<i>P</i>
Age (years)	58 (51.2-63)	59.5 (50.7-64)	58.5 (51.7-64.2)	0.929
Female (n/%)	3/9.3	4/20	3/16.6	0.536
Lab MELD	14.5 (11.2-17.7)	12.5 (9.2-17.7)	17 (14-25.2) #	0.032
Liver disease (n)				
→ HCC on cirrhotic liver	11	11	3	
Other cancers	2	1	1	
→ Cirrhosis without cancer	17	8	14	
reTx for HAT	2	0	0	

Donors' characteristics

	Group A (n=32)	Group B (n=20)	Group C (n=18)	<i>P</i>
Age (years)	44 (35.5-50.7)	62.5 (59-66.7)	73 (70-77)	<0.0001
DRI	1.8 (1.5-2.1)	2.3 (2.1-2.4)	2.6 (2.5-2.7)	<0.0001
Female (n/%)	10/31.2	3/15	6/33.3	0.347
CPR (n/%)	18/56.2	12/60	8/44.4	0.601
Causes of death (n)				
Anoxia	17	12	8	
Trauma	7	1	3	
Cerebrovascular Accident	7	7	7	
Other (euthanasia)	1	0	0	

Donors' characteristics

	Group A (n=32)	Group B (n=20)	Group C (n=18)	<i>P</i>
BMI (kg/m²)	25 (23-29)	25 (24-29)	26 (23-28)	0.740
Intensive care stay (days)	5 (4-8)	6.5 (5-8.7)	6.5 (3.7-9.2)	0.541
Urinary output (mL/day)	2 100 (1 550-3 200)	2 100 (1 550-3 250)	1 775 (1 234-2 060)	0.096
Pressors (n/%)	12/37.5	3/15	5/27.7	0.216
Na (mmol/L)	145 (139-149)	143 (139-147)	141 (136-148)	0.422
Total bilirubin (mg/dL)	0.38 (0.3-0.66)	0.3 (0.3-0.67)	0.44 (0.3-0.82)	0.275
AST (U/L)	39.5 (24.7-59.7)	38 (23.5-69)	36 (26-69)	0.993
GGT (U/L)	40 (27-118)	67 (39-118)	39 (24-92)	0.362

Procurement and Transplantation Characteristics

	Group A (n=32)	Group B (n=20)	Group C (n=18)	<i>P</i>
HTK (n/%)	30/93.7	15/75	17/94.4	0.078
Heparin use (n/%)	30/93.7	20/100	17/94.4	0.530
DWIT (min)	20 (15-22)	21 (17-28)	19 (15.5-26.7)	0.382
Withdrawal phase (min)	10 (7-12)	13 (8-19)	9 (5.7-17.2)	0.300
Acirculatory phase (min)	9 (8-10)	8 (7.2-10.7)	9 (7-10.2)	0.603
Hepatectomy time (min)	23 (20.7-27.5)	24.5 (17.2-30.7)	22.5 (18.2-23.5)	0.206
CIT (min)	236 (212-287)	245 (204-323)	210 (187-270)	0.395
Suture time (min)	41 (36-47)	42 (38-46)	39 (33-44)	0.339
Total ischemia (min)	299 (274-348)	306 (280-382)	277 (246-332)	0.277

Procurement and Transplantation Characteristics

	Group A (n=32)	Group B (n=20)	Group C (n=18)	<i>P</i>
HTK (n/%)	30/93.7	15/75	17/94.4	0.078
Heparin use (n/%)	30/93.7	20/100	17/94.4	0.530
→ DWIT (min)	20 (15-22)	21 (17-28)	19 (15.5-26.7)	0.382
Withdrawal phase (min)	10 (7-12)	13 (8-19)	9 (5.7-17.2)	0.300
Acirculatory phase (min)	9 (8-10)	8 (7.2-10.7)	9 (7-10.2)	0.603
Hepatectomy time (min)	23 (20.7-27.5)	24.5 (17.2-30.7)	22.5 (18.2-23.5)	0.206
CIT (min)	236 (212-287)	245 (204-323)	210 (187-270)	0.395
Suture time (min)	41 (36-47)	42 (38-46)	39 (33-44)	0.339
Total ischemia (min)	299 (274-348)	306 (280-382)	277 (246-332)	0.277

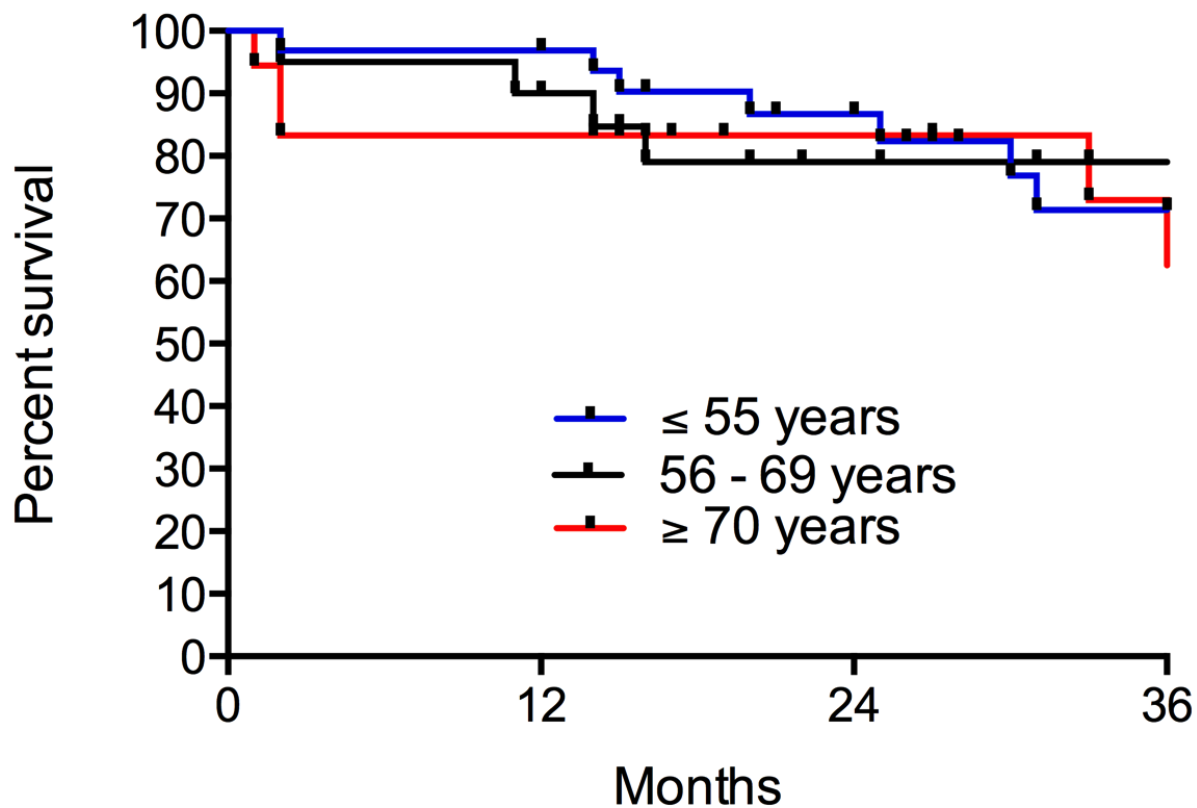
Procurement and Transplantation Characteristics

	Group A (n=32)	Group B (n=20)	Group C (n=18)	<i>P</i>
HTK (n/%)	30/93.7	15/75	17/94.4	0.078
Heparin use (n/%)	30/93.7	20/100	17/94.4	0.530
DWIT (min)	20 (15-22)	21 (17-28)	19 (15.5-26.7)	0.382
Withdrawal phase (min)	10 (7-12)	13 (8-19)	9 (5.7-17.2)	0.300
Acirculatory phase (min)	9 (8-10)	8 (7.2-10.7)	9 (7-10.2)	0.603
Hepatectomy time (min)	23 (20.7-27.5)	24.5 (17.2-30.7)	22.5 (18.2-23.5)	0.206
→ CIT (min)	236 (212-287)	245 (204-323)	210 (187-270)	0.395
Suture time (min)	41 (36-47)	42 (38-46)	39 (33-44)	0.339
Total ischemia (min)	299 (274-348)	306 (280-382)	277 (246-332)	0.277

	Group A (n=32)	Group B (n=20)	Group C (n=18)	<i>P</i>
Peak AST (U/L)	1 163 (715-2 693)	1 416 (587-2 825)	1 068 (699-3 078)	0.990
Peak total bilirubin (mg/dL)	2.7 (1.9-5.3)	3.1 (1.2-6.3)	4.5 (2.6-6.5)	0.289
PNF (n)	0	0	0	
HAT (n)	1	0	0	
Biliary Complications (n)	5	4	5	0.587
Fistula	0	1	2	
AS	5	2	3	
NAS	0	1	0	
Graft loss due to NAS	0	0	0	

	Group A (n=32)	Group B (n=20)	Group C (n=18)	<i>P</i>
Peak AST (U/L)	1 163 (715-2 693)	1 416 (587-2 825)	1 068 (699-3 078)	0.990
Peak total bilirubin (mg/dL)	2.7 (1.9-5.3)	3.1 (1.2-6.3)	4.5 (2.6-6.5)	0.289
PNF (n)	0	0	0	
HAT (n)	1	0	0	
Biliary Complications (n)	5	4	5	0.587
Fistula	0	1	2	
AS	5	2	3	
NAS	0	1	0	
→ Graft loss due to NAS	0	0	0	

Graft survival



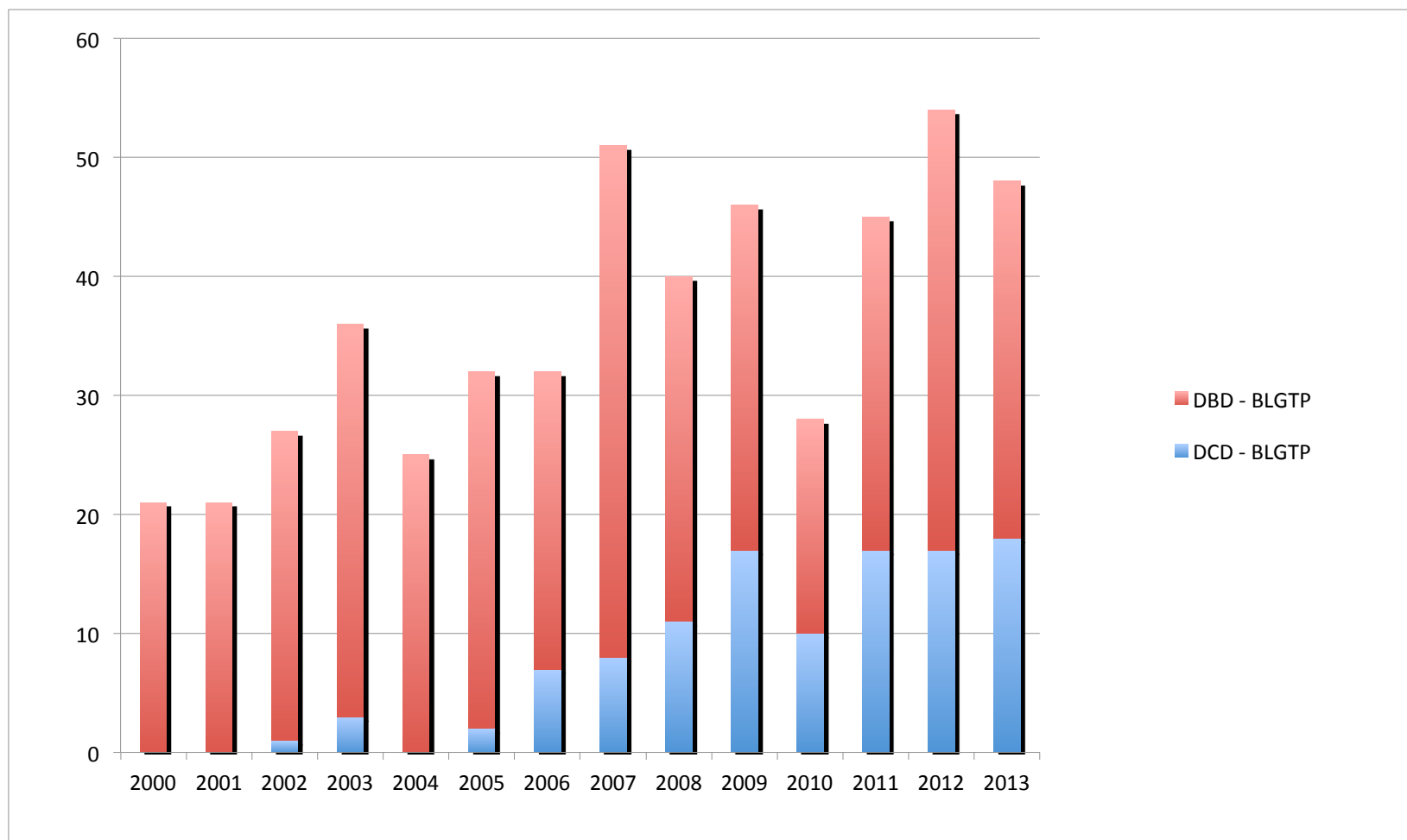
No. at risk:

	0	12	24	36
≤ 55 years	32	31	22	12
56-69 years	20	18	13	9
≥ 70 years	18	17	10	8

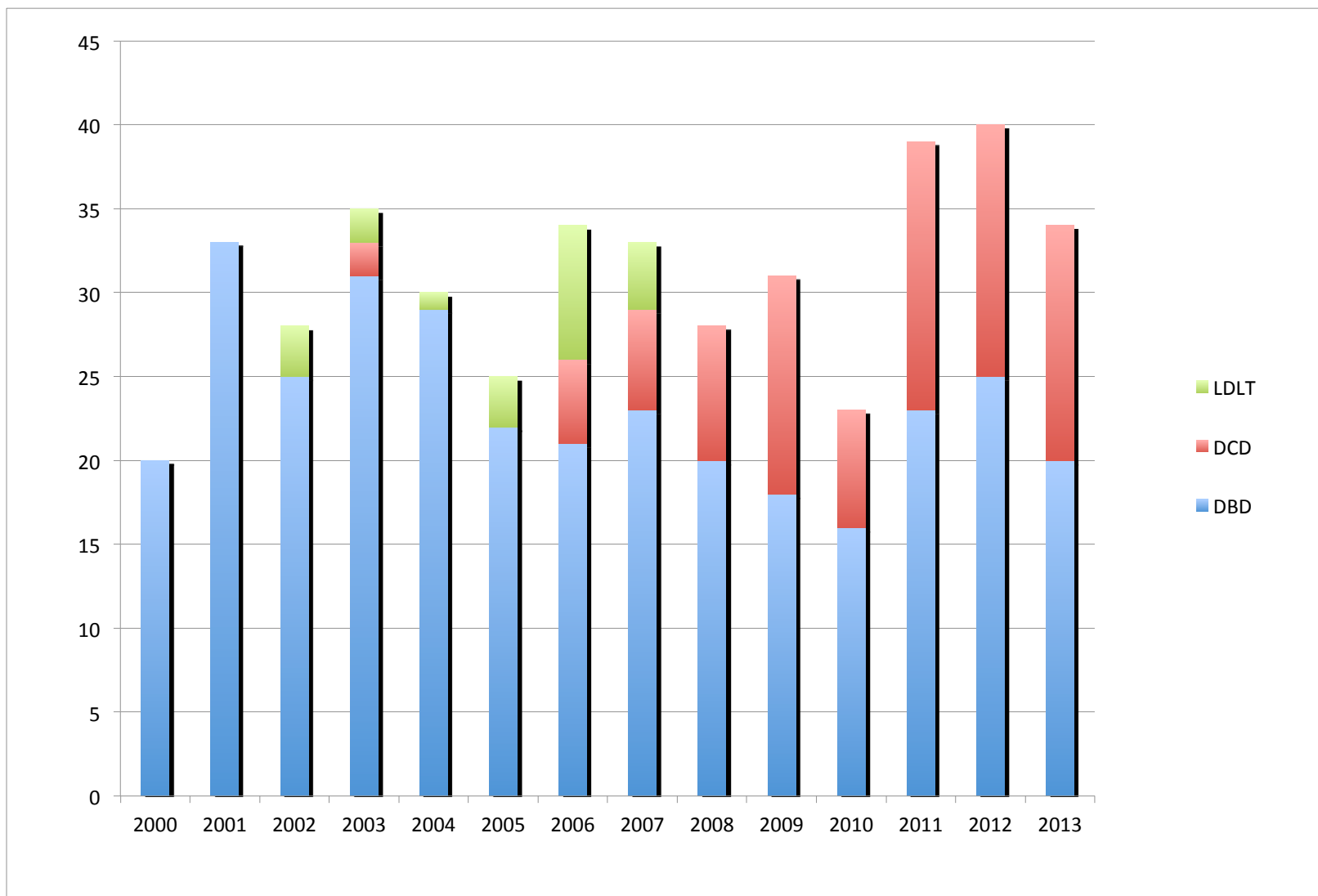
Discussion

- DCD may provides good liver grafts, if WI and CI are kept short
- Donor age > 55 years is not per se a contra-indication to DCD liver donation

DCD procurement activity



LT activity



Conclusions

- DCD procurement increased donor pool and available grafts
- No PNF and no graft loss due to NAS
- Age > 55 y not a contra-indication for DCD donation
- Aged DCD may be part of solution of organ donor shortage