

Peripheral T-cell lymphoma with t(6;14)(p25;q11.2) translocation presenting with massive splenomegaly

Joan Somja · Bettina Bisig · Christophe Bonnet ·
Christian Herens · Reiner Siebert · Laurence de Leval

Received: 9 December 2013 / Accepted: 13 February 2014
© Springer-Verlag Berlin Heidelberg 2014

Abstract Recurrent chromosomal translocations associated to peripheral T-cell lymphomas (PTCL) are rare. Here, we report a case of PTCL, not otherwise specified (NOS) with the karyotype 46,Y,add(X)(p22),t(6;14)(p25;q11) and FISH-proved breakpoints in the *IRF4* and *TCRAD* loci, leading to juxtaposition of both genes. A 64-year-old male patient presented with mild cytopenias and massive splenomegaly. Splenectomy showed diffuse red pulp involvement by a pleomorphic medium- to large-cell T-cell lymphoma with a CD2+ CD3+ CD5- CD7- CD4+ CD8+/- CD30- TCRbeta-F1+ immunophenotype, an activated cytotoxic profile, and strong

MUM1 expression. The clinical course was marked by disease progression in the bone marrow under treatment and death at 4 months. In contrast with two t(6;14)(p25;q11.2)-positive lymphomas previously reported to be cytotoxic PTCL, NOS with bone marrow and skin involvement, this case was manifested by massive splenomegaly, expanding the clinical spectrum of PTCLs harboring t(6;14)(p25;q11.2) and supporting consideration of this translocation as a marker of biological aggressiveness.

Keywords Peripheral T-cell lymphoma · Translocation · Splenomegaly · IRF4/MUM1 · T-cell receptor alpha · Cytotoxic

Joan Somja and Bettina Bisig contributed equally.

J. Somja
Department of Pathology, B35, University of Liege, CHU Sart Tilman, Liege, Belgium
e-mail: Joan.Somja@ulg.ac.be

B. Bisig · L. de Leval (✉)
Institute of Pathology, CHUV, University Hospital Lausanne, 25 rue du Bugnon, 1011 Lausanne, Switzerland
e-mail: Laurence.deLeval@chuv.ch

B. Bisig
e-mail: Bettina.Bisig@chuv.ch

C. Bonnet
Department of Hematology, University of Liege, CHU Sart Tilman, Liege, Belgium
e-mail: cbonnet@ulg.ac.be

C. Herens
Department of Human Genetics, University of Liege, CHU Sart Tilman, Liege, Belgium
e-mail: Christian.Herens@chu.ulg.ac.be

R. Siebert
Institute of Human Genetics, Christian-Albrechts-University Kiel and University Hospital Schleswig-Holstein, Campus Kiel, Kiel, Germany
e-mail: rsiebert@medgen.uni-kiel.de

Introduction

Peripheral T-cell lymphoma (PTCL) collectively designates a heterogeneous group of neoplasms derived from mature T and natural killer (NK) cells, altogether representing less than 15 % of all lymphomas [1]. These diseases have variable clinical presentation (as predominantly disseminated/leukemic, nodal, or extranodal diseases) and heterogeneous pathological features, but with few exceptions, tend to pursue an aggressive course, and have a poor outcome.

The genetic and molecular aberrations underlying T-cell lymphomagenesis and the biological diversity of PTCL entities remain poorly characterized. Only two entities, namely, anaplastic lymphoma kinase (ALK)-positive anaplastic large-cell lymphoma (ALCL) and T-cell prolymphocytic leukemia (PLL), are characterized by specific chromosomal translocations, involving *ALK* with *NPM1* or other genes, and *TCL1* or *MTCP1* with *TCRAD*, respectively [1]. In the past years, a few novel recurrent translocations have been identified in PTCLs, mainly the t(5;9)(q33;q22) leading to *SYK/ITK* fusion found in association with the so-called follicular variant of PTCL, not

otherwise specified (NOS), translocations involving *TP63* and other p53-related genes, and recurrent translocations involving the *IRF4* locus in chromosome region 6p25.3, with various partner genes [2–5].

Here, we present the clinical and pathological features of a PTCL, NOS harboring a t(6;14)(p25;q11.2) translocation, juxtaposing the *IRF4* and *TCRAD* loci.

Clinical history

A 64-year-old man with no significant previous medical history presented with complaints of asthenia, fever, arthralgia, dyspnea at rest, and abdominal pain of recent onset (1–2 weeks). At the time of admission, the patient was pale and febrile (38 °C). Physical examination revealed palpable splenomegaly, no peripheral lymphadenopathy, and no skin lesion. Blood tests showed anemia (10.8 g Hb/dL), decreased platelet count at $43 \times 10^3/\text{mm}^3$, normal white cell absolute ($7.08 \times 10^3/\text{mm}^3$) and differential counts, elevated C-reactive protein (CRP) (159.4 mg/L, $N=0-6$), and increased lactate dehydrogenase (LDH) levels (1,397 IU/L, $N=240-480$). Liver tests were slightly abnormal with mild elevation of bilirubin levels (11.3 mg/L, $N=2.3-10$) and elevated GGT (253 IU/L, $N=0-50$), while transaminase levels were within normal range. Renal function tests were normal. Serologies for HIV and HCV were negative. An extensive immunological screening was performed in the search of an active infection, but serologies only showed past immunization for Epstein-Barr virus (EBV) and adenovirus.

Computed tomography (CT) of the chest and abdomen confirmed a severe homogeneous splenomegaly and normal-sized liver with probable mild steatosis, while no enlarged lymphadenopathy was observed. Given high estimated risk of spontaneous rupture of the spleen, the patient underwent splenectomy on day 9 after admission. Liver needle biopsies were obtained during the same operative procedure.

A diagnosis of PTCL, NOS was rendered (splenectomy, see below). Altogether, including minimal involvement of the liver and bone marrow, clinical staging was stage IVB, international prognostic index (IPI) score was 5, and the prognostic index for T-cell lymphoma (PIT) score was 4. The patient was treated with polychemotherapy (cyclophosphamide, hydroxydoxorubicin, oncovin, prednisone, CHOP) at 3-week intervals. After the fourth course of treatment, the patient developed fever and clinical investigations failed to identify an infectious cause. A bone marrow biopsy revealed diffuse lymphomatous infiltration, and PET showed generalized osteomedullary hyperfixation. The patient's condition progressively worsened, preventing administration of additional therapy, and he died 4 months after admission with clinically progressive disease.

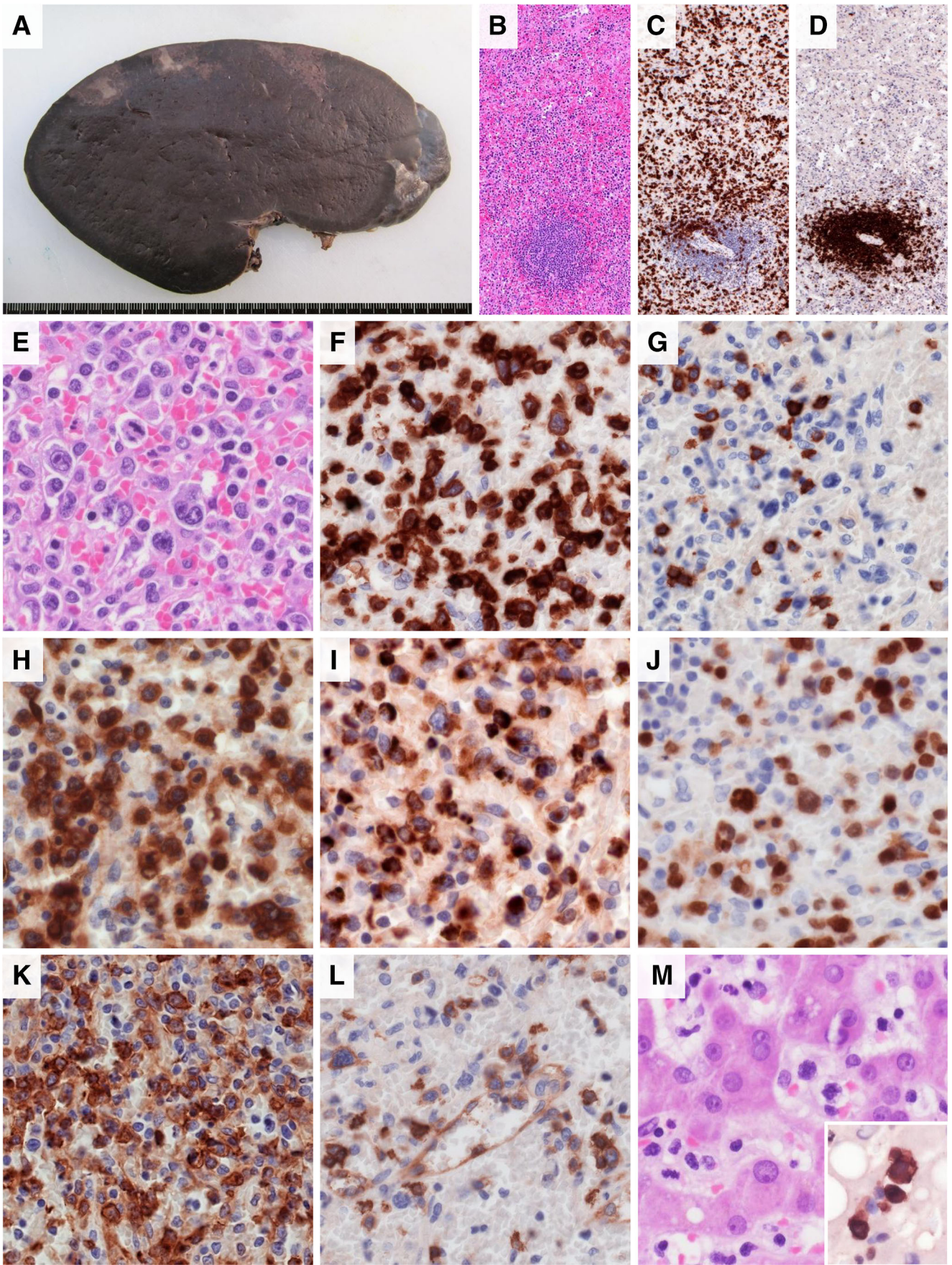
Pathological findings—methods and results

The spleen measured $25 \times 13 \times 11$ cm and weighed 1,495 g. On cut sections, the parenchyma displayed a homogeneous beefy red appearance with multiple small subcapsular infarcts (Fig. 1a). No lymph nodes were identified in the hilum. Representative sections were routinely processed for paraffin embedding after B-plus or formalin fixation, according to standard procedures. Microscopic examination showed an overall preserved architecture with pronounced expansion of the red pulp and markedly atrophic white pulp (Fig. 1b–d). The red pulp was overall congested with areas of red blood cell extravasation and hemorrhage and was diffusely infiltrated by atypical lymphoid cells featuring heterogeneous density, distributed mainly in the splenic cords, and sometimes also infiltrating the walls of larger vessels. The lymphoid cells were pleomorphic, medium- to large-sized. The smaller cells had rather round nuclei, while the larger ones had irregular nuclear contours, sometimes lobated nuclei, and variably prominent nucleoli. A few cells had Reed-Sternberg-like features (Fig. 1e). Mitoses were easily seen. There were no significant infiltrate of eosinophils or histiocytes and no granulomas. Upon immunostaining (by the use of a Ventana autostainer for all antibodies, except for TCR gamma stained manually), CD20, CD79a, and PAX5 essentially stained the small residual white pulp nodules (Fig. 1d), while the lymphoid infiltrate in the red pulp was diffusely CD3+ (Fig. 1c, f). The atypical lymphoid cells were CD2+ CD3+ CD4+ CD5– CD7– CD8+/- CD10– CD30– CD43+ CD45RA– CD45RO+ CD56– CD57–, MUM1+, TCRbeta-F1+, and TCRgamma– and showed an activated cytotoxic profile (TIA1+, granzymeB+) (Fig. 1f–l). In situ hybridization for the EBV (using probes for EBV-encoded RNAs, EBERS) was negative.

The liver biopsy (Fig. 1m) showed mild steatosis and atypical medium to large lymphoid cells within the sinusoids and in some portal tracts, which were positive for CD3 by immunostaining (Fig. 1m, inset) and interpreted as hepatic involvement by lymphoma.

Staging bone marrow aspirate and trephine biopsy were performed. On HE sections, the marrow showed mildly hypercellular trilinear hematopoiesis with complete maturation, and no suspect lymphoid foci; immunostaining for CD3

Fig. 1 Pathological findings. **a** Gross appearance of a cut section of the spleen after formalin fixation. **b–d** Low-power views (original magnification, $\times 100$) of the splenic parenchyma (**b**, H&E), showing marked expansion of the red pulp by a population of CD3+ cells (**c**), while the remnants of the white pulp were atrophic (**d**, CD20). **e–l** High-power views (original magnifications, $\times 200$ to $\times 400$) of the splenic red pulp, revealing atypical pleomorphic medium- to large-sized lymphoid cells (**e**, H&E) with the following immunophenotype: CD3+ (**f**), CD5– (**g**), TCRβF1+ (**h**), TIA1+ (**i**), MUM1+ (**j**), CD4+ (**k**), CD8+/- (**l**). **m** High-power view (original magnification, $\times 400$) of the liver biopsy, showing intrasinusoidal atypical CD3+ lymphoid cells (H&E; inset, CD3)



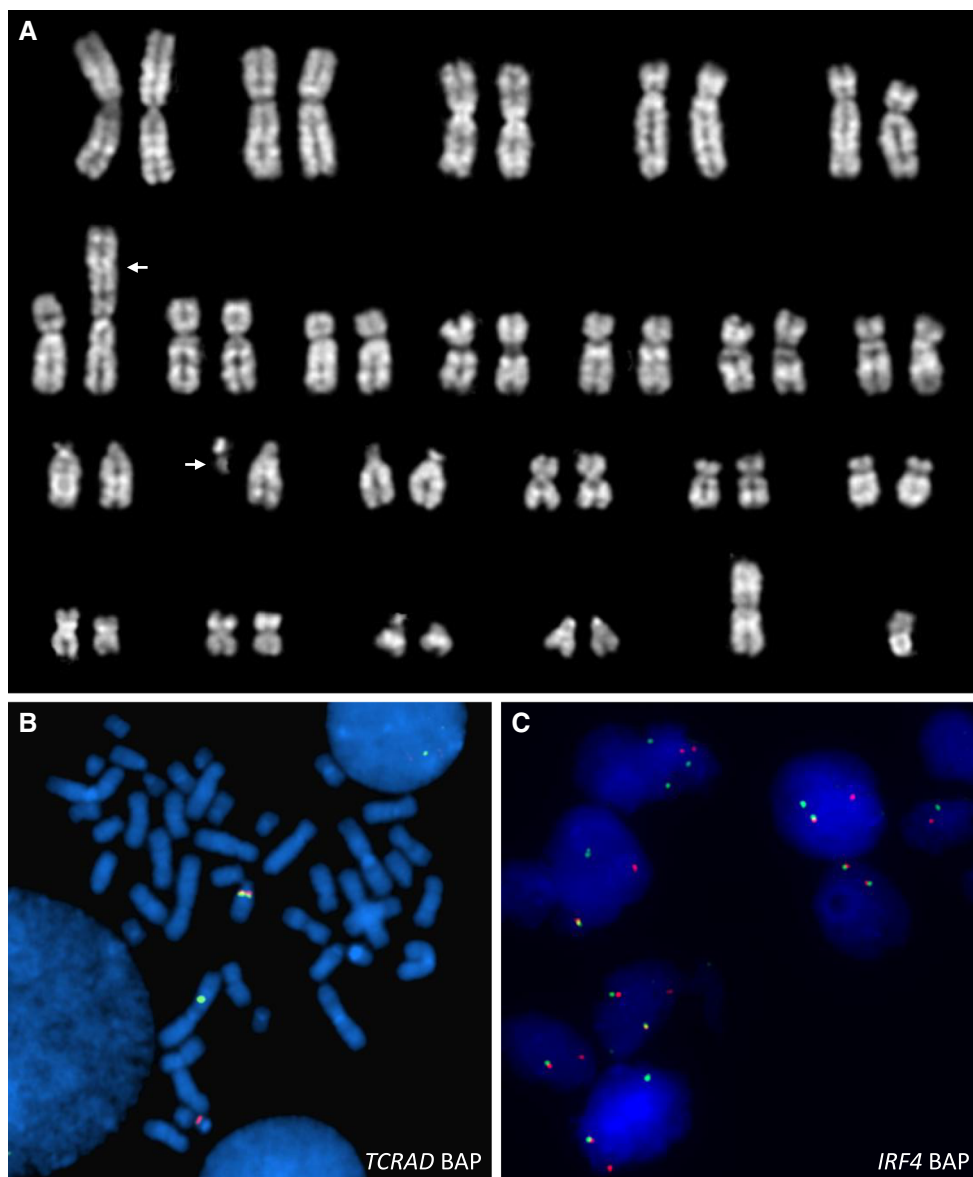
highlighted scattered randomly distributed atypical lymphoid cells with irregular hyperchromatic nuclei, mostly isolated or sometimes in small groups. No abnormal lymphoid component was observed on the bone marrow smears. Flow cytometry analysis of the aspirate performed in the hematology laboratory showed a small population of lymphoid cells (5 %) coexpressing CD3, CD4, and CD8.

Conventional cytogenetic analysis performed on a spleen tissue sample and on the bone marrow showed the same abnormal clonal karyotype: 46,Y,add(X)(p22),t(6;14)(p25;q11) in 3 of 4 metaphases from DSP30/IL2-stimulated spleen cultures and 4 of 20 metaphases from classical bone marrow cultures (Fig. 2a). The remaining metaphases showed a regular male karyotype 46,XY. Fluorescence in situ hybridization

(FISH) studies were performed with break-apart probes for *TCRAD* (Abbott, Wiesbaden) and *IRF4* [6]. A total of 37/100 and 30/100 nuclei counted showed a signal pattern indicating a breakpoint in the *TCRAD* and *IRF4* locus, respectively, demonstrating that both loci were involved in the translocation (Fig. 2b, c). Moreover, fusion of both loci was detected by a double-color double-fusion assay in 30/100 nuclei using breakpoint spanning probes for the *TCRAD* [7, 8] and *IRF4* [6], which confirmed juxtaposition of *IRF4* and *TCRAD* (not shown). A monoclonal rearrangement of the T-cell receptor gamma gene (*TCRG*) was evidenced in the spleen and in the bone marrow, with a clonal peak of identical size in both locations.

At progression, the bone marrow trephine biopsy revealed fibro-edema and, despite overall low cellularity, a diffuse infiltration by neoplastic lymphoid cells, with similar

Fig. 2 Genetic findings. **a** QFQ-banded karyogram of a representative metaphase showing the following karyotype: 46,Y,add(X)(p22),t(6;14)(p25;q11) (arrows point at derivatives der(6)t(6;14) and der(14)t(6;14)). **b** Metaphase FISH with a *TCRAD* break-apart probe showing a colocalized signal for the intact *TCRAD* locus on the normal chromosome 14, an isolated red signal on der(14)t(6;14), and an isolated green signal on der(6)t(6;14), indicating a breakpoint in the *TCRAD* locus. **c** Interphase FISH with an *IRF4* break-apart probe showing a split of the red and green signals in the tumor cells indicating a breakpoint in the *IRF4* locus, in addition to one intact copy of *IRF4* (colocalized red/green signal)



morphology and immunophenotype (CD3⁺ CD5⁻ CD4⁺ CD8^{+/-} TIA1⁺) to those observed at diagnosis. No significant intrasinusoidal pattern was noted.

Discussion

This is the third report of a case of PTCL, NOS associated with a balanced t(6;14)(p25;q11) translocation involving the *IRF4* and *TCRAD* loci (Table 1). The first two cases reported by Feldman et al. had similar clinicopathological features. Both occurred in older men who presented with mild cytopenias and were found to have massive bone marrow involvement by lymphoma, without peripheral blood involvement and without significant lymphadenopathy or hepatosplenomegaly, and both patients developed skin lesions during the course of the disease. The lymphoma cells were medium or medium to large and, in both cases, had a cytotoxic immunophenotype [3]. One of these patients was still alive at 4 months after diagnosis but was experiencing progressive cutaneous disease, while the other was lost to follow-up. Interestingly, the characteristics of the present case partly overlap with those of the *princeps* cases, bringing support to the notion that *IRF4/TCRAD* translocations might define a rare subset of PTCL, NOS with distinct clinicopathologic features. PTCLs harboring *IRF4/TCRAD* translocation are derived from $\alpha\beta$ T cells, feature pleomorphic medium- to large-sized cell morphology, and are CD3⁺ CD5⁻ (2/2 cases tested) double positive for CD4 and CD8 (2/2 cases tested) with a cytotoxic immunophenotype and negative for EBV. Regarding the clinical presentation, while it was suggested that bone marrow and skin involvement was typical of t(6;14)(p25;q11.2)-positive PTCLs, the current case differs by its predominantly splenic involvement and the lack of skin lesions, while the bone marrow infiltration, albeit subtle at the time of diagnosis, progressed under treatment. Interestingly, common to all three cases is the lack of lymph node involvement. The clinical course of our patient clearly reflects an aggressive disease with rapid resistance to chemotherapy ended with fatal outcome. Follow-up information for the cases reported by Feldman et al. is unfortunately incomplete, but in one of these cases, there is documented early disease progression under treatment. It can therefore be suspected that PTCLs with *IRF4/TCRAD* translocations represent a particularly aggressive subset of PTCLs.

While chromosomal breaks involving the *TCR* gene loci occur recurrently in lymphoblastic T-cell neoplasms and in T-cell prolymphocytic leukemia, their overall prevalence in PTCL, NOS is extremely low [9]. Nevertheless, like typical for T-PLL and T-ALL with *TCRAD* translocation, the present case shows leukemic involvement. The rare *TCR* translocations (mostly involving the *TCRAD* locus) in PTCL yet remain poorly understood, as the identity of the translocation

partner(s) has not been identified in most cases [7, 10, 11]. The poliovirus receptor-related 2 (*PVRL2*) has been cloned as the partner gene of the *TCRAD* in the t(14;19)(q11;q13) translocation and appears to be associated with overexpression of both *PVRL2* and *BCL3* messenger RNAs (mRNAs) [12, 13].

In the case of the t(6;14)(p25;q11.2) translocation discussed here, the question is which gene(s) in chromosome band 6p25 is (are) deregulated by the juxtaposition to *TCRAD*. MUM1, encoded by *IRF4*, is strongly expressed in the tumor cells which might indicate *IRF4* to be the target. However, other rearrangements of the *IRF4* locus at 6p25, unrelated to *TCRAD*, have been identified in a substantial proportion of ALK-negative ALCLs of the systemic or cutaneous type and have been shown to involve the *DUSP22* phosphatase gene located more telomeric to *IRF4* [14–16]. *IRF4*, also known as multiple myeloma oncogene-1 (MUM1), is a transcription factor acting as a regulator of normal lymphoid differentiation. *IRF4* expression in normal lymphoid cells is essentially restricted to plasma cells, some B cells, and activated T lymphocytes, while its expression is deregulated in a variety of B- and T-cell neoplasms, including a subset of plasma cell myelomas and B cell lymphomas harboring structural modifications of the gene [6, 17]. ALK-negative ALCLs are usually positive for MUM1 expression, irrespective of 6p25 rearrangements, and no significant difference in the *IRF4* mRNA levels has been evidenced between translocated and non-translocated cases [3]. In PTCL, NOS, MUM1 expression has generally been associated with a CD30⁺ immunophenotype. Given the consistently strong immunoreactivity for MUM1 antibodies in the three cases with *IRF4/TCRAD* in the absence of CD30 expression, it seems reasonable to infer that the translocation induced deregulated overexpression of the *IRF4* gene.

The splenic involvement by this t(6;14)(p25;q11.2)-positive PTCL was characterized by diffuse red pulp expansion, which is the most frequent pattern of splenic involvement by mature NK/T-cell lymphoproliferations [18]. In particular, differential diagnostic considerations in this case include hepatosplenic T-cell lymphoma (HSTL) and splenic involvement by T-cell large granular lymphocytic leukemia (T-LGL), two entities with a cytotoxic phenotype. HSTL tends to occur in young adults and is typically derived from $\gamma\delta$ T cells, but $\alpha\beta$ variants have been described as well; more divergent from the case reported here are the typically intrasinusoidal distribution of the lymphoma cells, their monomorphic appearance, and their non-activated cytotoxic phenotype in HSTL. In addition, most cases of HSTL are associated with an isochromosome 7q. T-LGL is a usually indolent lymphoproliferation of CD3⁺ CD8⁺ cytotoxic T cells in older individuals, comprising a circulating leukemic component and a usually mild splenomegaly [1].

Table 1 Clinical, pathological and cytogenetic features of peripheral T-cell lymphomas with a t(6;14)(p25;q11.2) translocation reported in the literature

	Sex/age (years)	Disease distribution	Morphology	Immunophenotype	Karyotype	Therapy	Follow-up
Case 1 (3)	M/67	Bone marrow, skin (at progression)	Medium to large cells, pleomorphic	CD3+ CD4+ CD5- CD8+ CD30- TCRbeta-FI+ Cytotoxic, activated MUM1+ EBV-	48-49, XY, +3[5],+5,der(6)t(6;14)(p25;q11.2),add(7)(p11.2),-14,+16,+16[5],-20,-22[4], +1-2mar[cp6]/95-98, idemx2,+3-8mar[2]	CHOP, ICE, ITMTX	Alive at 4 months with progressive cutaneous disease
Case 2 (3)	M/71	Bone marrow, skin (at progression)	Medium cells	CD3+ CD5- CD30- TCRbeta-FI+ Cytotoxic MUM1+ EBV-	49,XY,+add(3)(q27),t(6;14)(p25;q11.2),+8,-9,+19,+21	NA	NA
Case 3 (current)	M/64	Spleen, liver, bone marrow	Medium to large cells, pleomorphic	CD2+ CD3+ CD4+ CD5- CD7- CD8+ CD30- CD43+ CD56- TCRbeta-FI+ Cytotoxic, activated MUM1+ EBV-	46, Y,add(X)(p22),t(6;14)(p25;q11.2)	CHOP	Progressive bone marrow disease under treatment, died of disease at 4 months

CHOP cyclophosphamide+hydroxydoxorubicin+oncovin+prednisone, ICE ifosfamide+etoposide, ITMTX intrathecal methotrexate, NA, not available

In summary, the case reported here expands the clinical spectrum of PTCLs harboring t(6;14)(p25;q11.2) and supports consideration of this translocation as a marker for a subset of clinically aggressive cytotoxic PTCL. Collection of additional cases will be necessary to clarify their pathobiology. This report also expands the differential diagnosis of cytotoxic T-cell lymphomas with predominantly splenic involvement.

Conflict of interest We declare that we have no conflict of interest.

References

1. Swerdlow S, Campo E, Harris N, Jaffe E, Pileri S, Stein H, Thiele J, Vardiman J (2008) WHO classification of tumours of haematopoietic and lymphoid tissues. IARC, Lyon
2. Streubel B, Vinatzer U, Willheim M, Raderer M, Chott A (2006) Novel t(5;9)(q33;q22) fuses ITK to SYK in unspecified peripheral T-cell lymphoma. *Leukemia* 20(2):313–318
3. Feldman AL, Law M, Remstein ED, Macon WR, Erickson LA, Grogg KL, Kurtin PJ, Dogan A (2009) Recurrent translocations involving the IRF4 oncogene locus in peripheral T-cell lymphomas. *Leukemia* 23(3):574–580
4. Bisig B, Gaulard P, de Leval L (2012) New biomarkers in T-cell lymphomas. *Best Pract Res Clin Haematol* 25(1):13–28. doi:10.1016/j.beha.2012.01.004
5. Vasmataz G, Johnson SH, Knudson RA, Ketterling RP, Braggio E, Fonseca R, Viswanatha DS, Law ME, Kip NS, Ozsan N, Grebe SK, Frederick LA, Eckloff BW, Thompson EA, Kadin ME, Milosevic D, Porcher JC, Asmann YW, Smith DI, Kovtun IV, Ansell SM, Dogan A, Feldman AL (2012) Genome-wide analysis reveals recurrent structural abnormalities of TP63 and other p53-related genes in peripheral T-cell lymphomas. *Blood* 120(11):2280–2289. doi:10.1182/blood-2012-03-419937
6. Salaverria I, Philipp C, Oschlies I, Kohler CW, Kreuz M, Szczepanowski M, Burkhardt B, Trautmann H, Gesk S, Andrusiewicz M, Berger H, Fey M, Harder L, Hasenclever D, Hummel M, Loeffler M, Mahn F, Martin-Guerrero I, Pellissery S, Pott C, Pfreundschuh M, Reiter A, Richter J, Rosolowski M, Schwaenen C, Stein H, Trumper L, Wessendorf S, Spang R, Kuppers R, Klapper W, Siebert R (2011) Translocations activating IRF4 identify a subtype of germinal center-derived B-cell lymphoma affecting predominantly children and young adults. *Blood* 118(1):139–147. doi:10.1182/blood-2011-01-330795
7. Gesk S, Martin-Subero JI, Harder L, Luhmann B, Schlegelberger B, Calasanz MJ, Grote W, Siebert R (2003) Molecular cytogenetic detection of chromosomal breakpoints in T-cell receptor gene loci. *Leukemia* 17(4):738–745
8. Kahl C, Gesk S, Harder L, Harbott J, French L, Deloukas P, Grote W, Schlegelberger B, Siebert R (2001) Detection of translocations involving the HOX11/TCL3-locus in 10q24 by interphase fluorescence in situ hybridization. *Cancer Genet Cytogenet* 129(1):80–84
9. Nelson M, Horsman DE, Weisenburger DD, Gascoyne RD, Dave BJ, Loberiza FR, Ludkovski O, Savage KJ, Armitage JO, Sanger WG (2008) Cytogenetic abnormalities and clinical correlations in peripheral T-cell lymphoma. *Br J Haematol* 141(4):461–469
10. Leich E, Haralambieva E, Zettl A, Chott A, Rudiger T, Holler S, Muller-Hermelink HK, Ott G, Rosenwald A (2007) Tissue microarray-based screening for chromosomal breakpoints affecting the T-cell receptor gene loci in mature T-cell lymphomas. *J Pathol* 213(1):99–105
11. Feldman AL, Law M, Grogg KL, Thorland EC, Fink S, Kurtin PJ, Macon WR, Remstein ED, Dogan A (2008) Incidence of TCR and TCL1 gene translocations and isochromosome 7q in peripheral T-cell lymphomas using fluorescence in situ hybridization. *Am J Clin Pathol* 130(2):178–185
12. Martin-Subero JI, Wlodarska I, Bastard C, Picquenot JM, Hoppner J, Giefing M, Klapper W, Siebert R (2006) Chromosomal rearrangements involving the BCL3 locus are recurrent in classical Hodgkin and peripheral T-cell lymphoma. *Blood* 108(1):401–402, author reply 402–403
13. Almire C, Bertrand P, Ruminy P, Maingonnat C, Wlodarska I, Martin-Subero JI, Siebert R, Tilly H, Bastard C (2007) PVRL2 is translocated to the TRA@ locus in t(14;19)(q11;q13)-positive peripheral T-cell lymphomas. *Genes, Chromosomes and Cancer* 46(11):1011–1018
14. Pham-Ledard A, Prochazkova-Carlotti M, Laharanne E, Vergier B, Jouary T, Beylot-Barry M, Merlio JP (2010) IRF4 gene rearrangements define a subgroup of CD30-positive cutaneous T-cell lymphoma: a study of 54 cases. *J Invest Dermatol* 130(3):816–825. doi:10.1038/jid.2009.314
15. Wada DA, Law ME, Hsi ED, Dicaudo DJ, Ma L, Lim MS, Souza AD, Comfere NI, Weenig RH, Macon WR, Erickson LA, Ozsan N, Ansell SM, Dogan A, Feldman AL (2010) Specificity of IRF4 translocations for primary cutaneous anaplastic large cell lymphoma: a multicenter study of 204 skin biopsies. *Mod Pathol* 24(4):596–605. doi:10.1038/modpathol.2010.225
16. Feldman AL, Dogan A, Smith DI, Law ME, Ansell SM, Johnson SH, Porcher JC, Ozsan N, Wieben ED, Eckloff BW, Vasmataz G (2011) Discovery of recurrent t(6;7)(p25.3;q32.3) translocations in ALK-negative anaplastic large cell lymphomas by massively parallel genomic sequencing. *Blood* 117(3):915–919. doi:10.1182/blood-2010-08-303305
17. Gualco G, Weiss LM, Bacchi CE (2010) MUM1/IRF4: a review. *Appl Immunohistochem Mol Morphol* 18(4):301–310. doi:10.1097/PAL.0b013e3181cf1126
18. Chan JK (2003) Splenic involvement by peripheral T-cell and NK-cell neoplasms. *Semin Diagn Pathol* 20(2):105–120