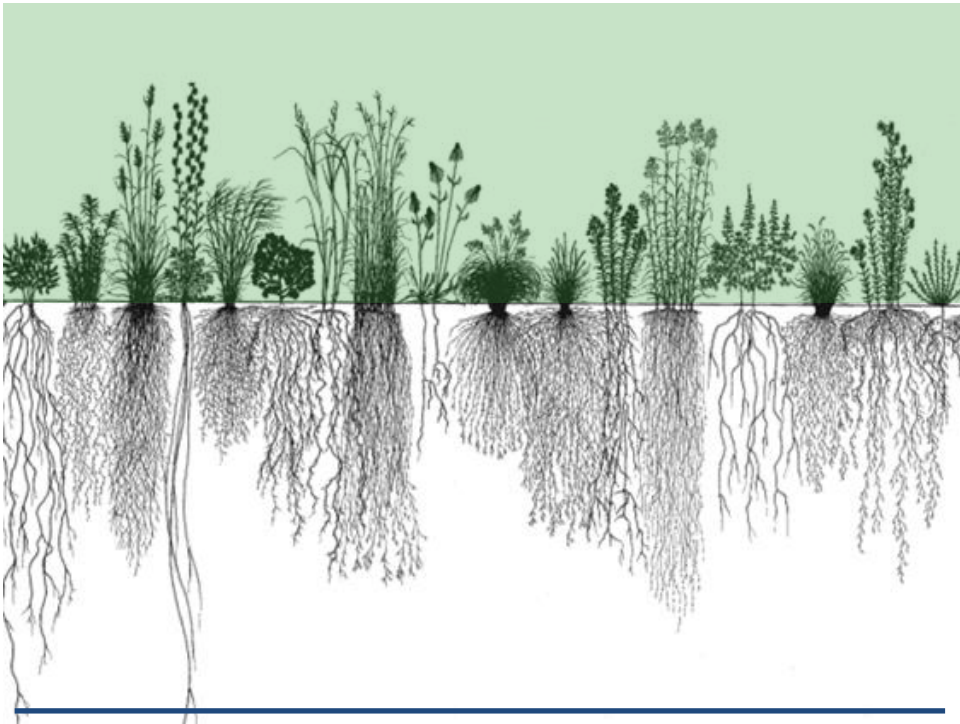
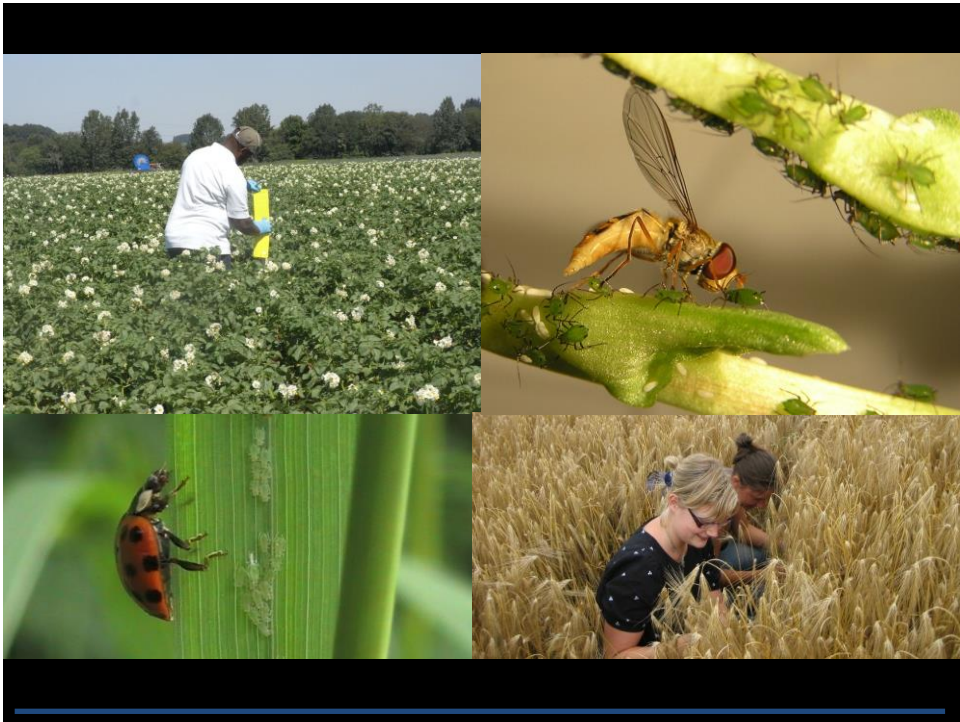


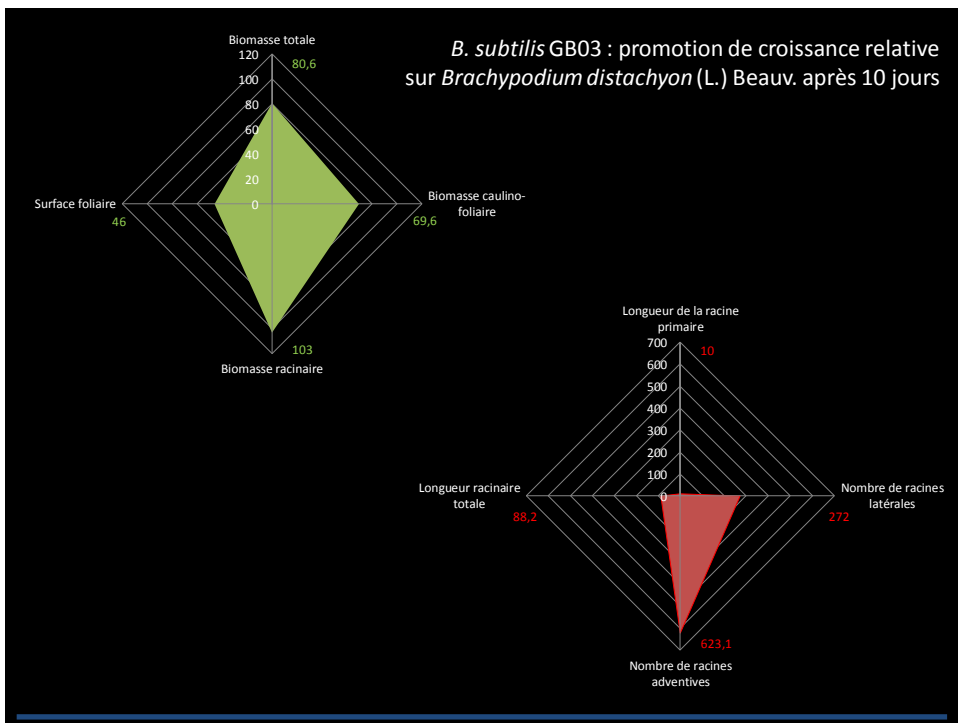
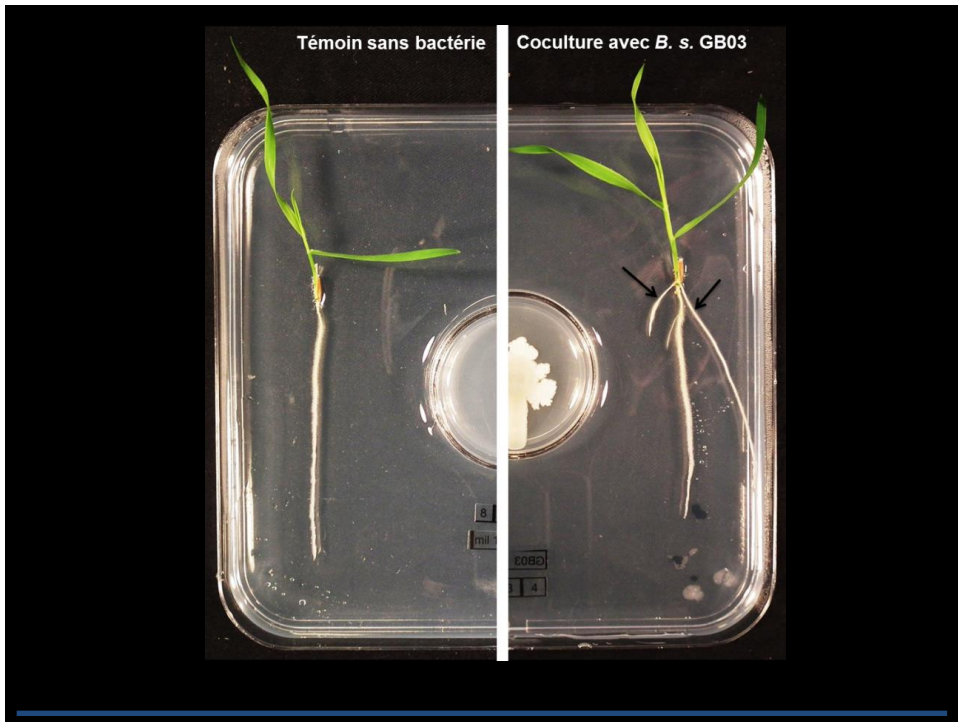


1. Modélisation des systèmes de production agricole

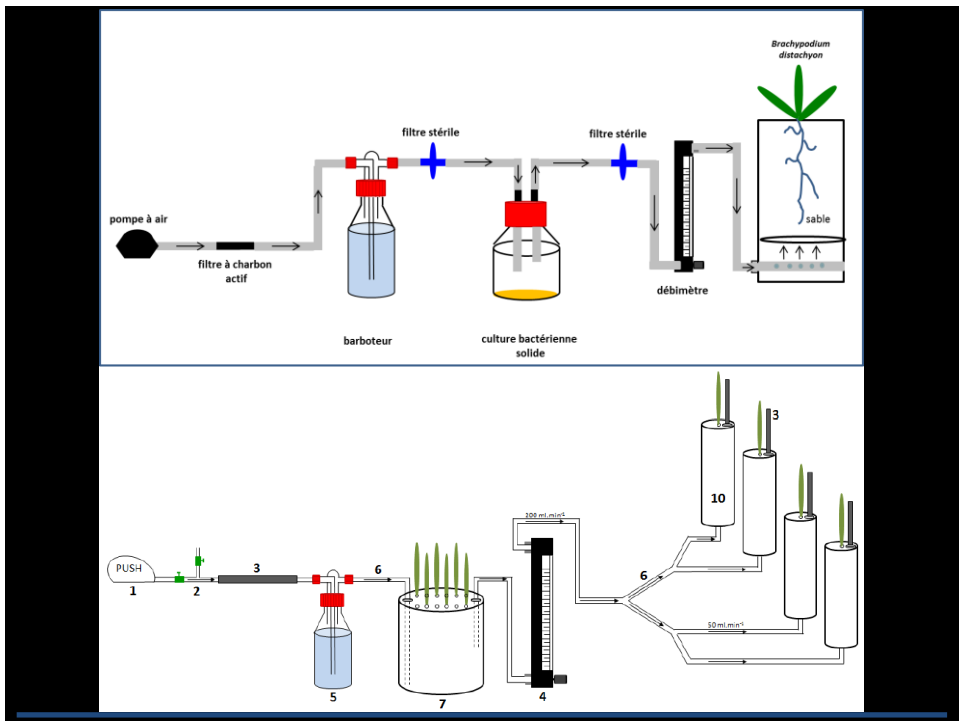
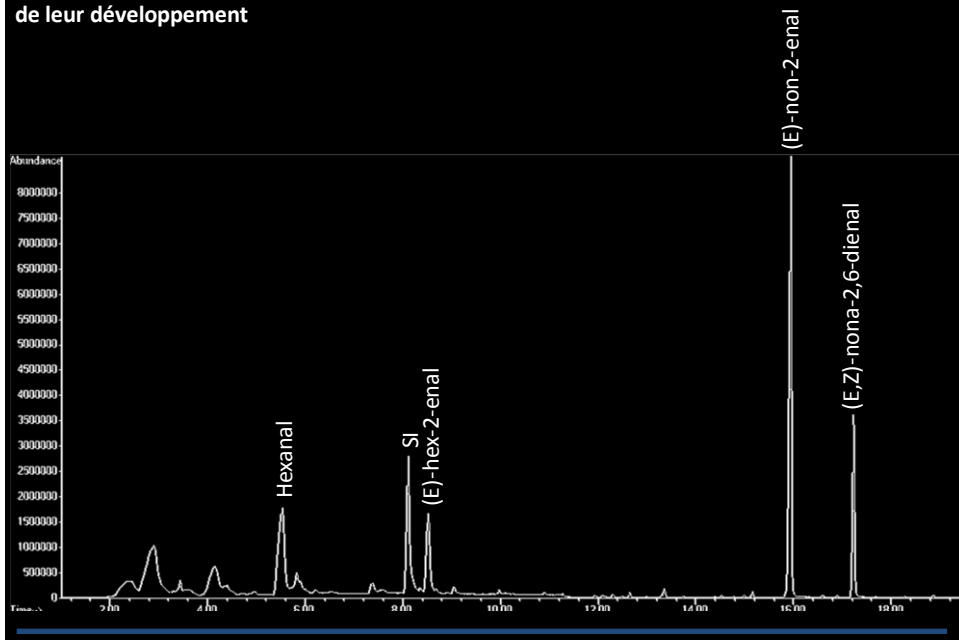


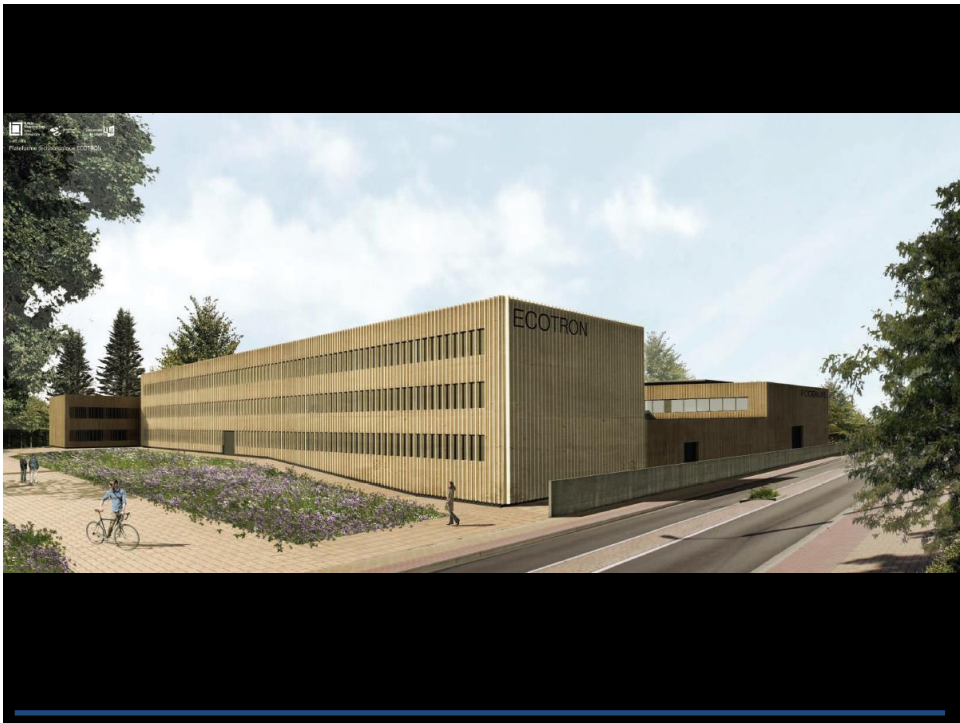






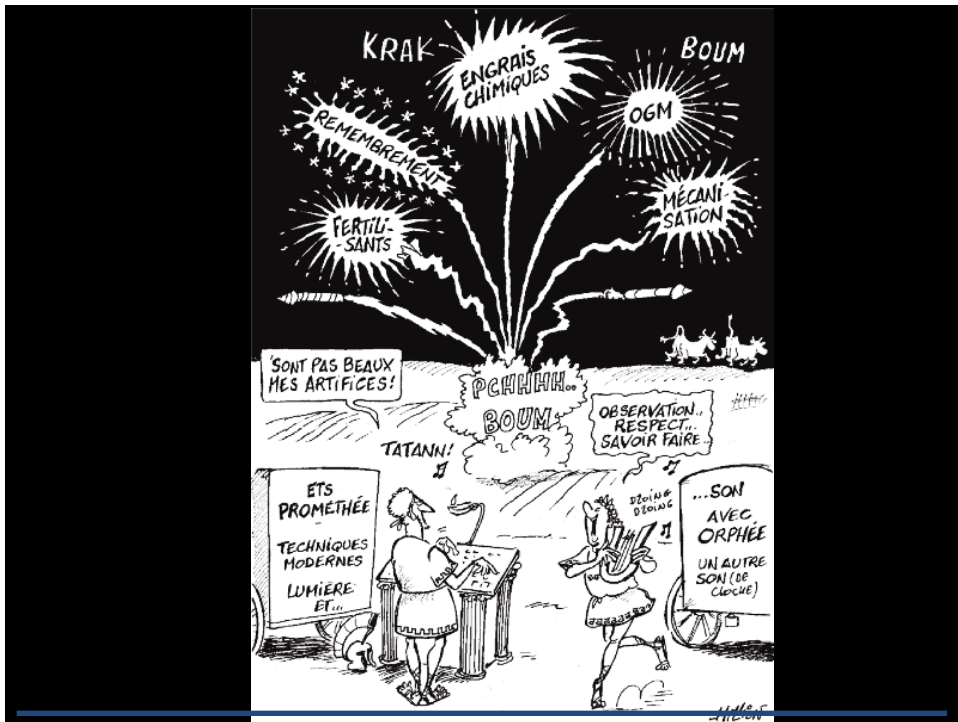
Caractérisation de l'évolution du contenu en volatils dans les racines de plantes d'orge au cours de leur développement











Dr Ir Pierre Delaplace
 Chargé de cours adjoint
 Responsables scientifique de la plateforme Ecotron/EnvironmentIsLife

Université de Liège
 Gembloux Agro-Bio Tech (GxABT)
 Laboratoire de Biologie végétale

Tél. +32(0)81 622450

Email : pierre.delaplace@ulg.ac.be