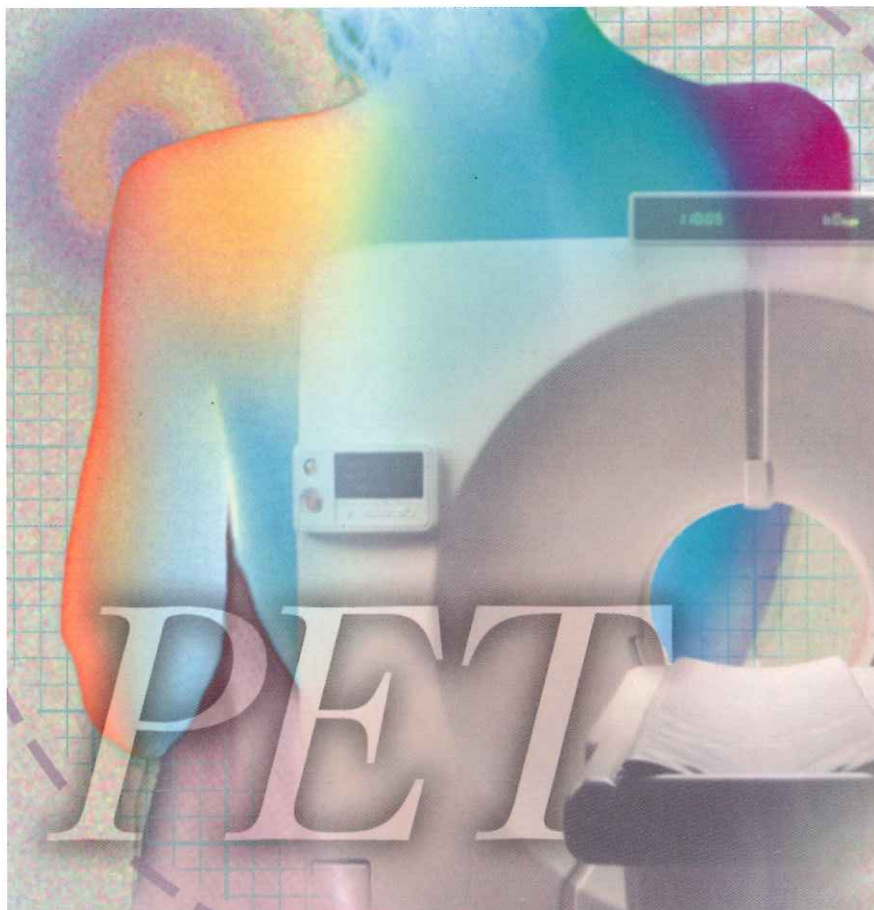


CLINICAL PET IN ONCOLOGY



Roland Hustinx
Patrick Paulus
Pierre Rigo

Division of Nuclear Medicine
University Hospital,
Liège, Belgium

Henry W. Yeung
Homer A. Macapinlac
Steven M. Larson

Laurent and Alberta Gerschel PET Center
Nuclear Medicine Service.
Department of Radiology
Memorial Sloan-Kettering Cancer Center,
New York, U.S.A.

MALLINCKRODT
MEDICAL



GE Medical Systems
