

Gene structure and promoter function of a teleost ribosomal protein: a tilapia (*Oreochromis mossambicus*) L18 gene

Alfredo Molina ^a, Arati Iyengar ^b, Luis F. Marins ^b, Frédéric Biemar ^a, Sean Hanley ^c, Norman Maclean ^b, Terry J. Smith ^c, Joseph A. Martial ^a, Marc Muller ^{a,*}

^a Laboratoire de Biologie Moléculaire et de Génie Génétique, Université de Liège, Institut de Chimie B6, B-4000 Sart-Tilman, Belgium

^b School of Biological Sciences University of Southampton, Bassett Crescent East, Southampton, SO16 7PX, UK

^c National Diagnostics Center, National University of Ireland, University Road, Galway, Ireland

Received 2 January 2001; received in revised form 18 June 2001; accepted 9 July 2001

Abstract

We have cloned and characterized a tilapia (*Oreochromis mossambicus*) L18 ribosomal protein gene, including the complete transcribed region and 488 bp of upstream regulatory sequences. We have also isolated two L18 cDNAs from another tilapia (*Oreochromis niloticus*) with a few conservative nucleotide differences. Our results suggest the presence of two genes in both species. Reporter constructs were tested for transient expression in CV1 cells and in microinjected zebrafish and tilapia embryos. The tilapia L18 promoter was able to drive expression of the reporter gene in all three experiments, with no apparent preference for a particular tissue. The tilapia L18 promoter is therefore likely to be a powerful tool to drive tissue-independent gene expression in fish. © 2001 Elsevier Science B.V. All rights reserved.

Keywords: Ribosomal protein; Promoter; Transcription; L18; Fish; Tilapia

1. Introduction

Ribosomes are composed of 3–4 rRNA molecules and about 60–80 protein subunits. Ribosomal protein (r-protein) genes have been considered housekeeping genes, with a strongly coordinated constitutive expression that is closely linked to that of the different ribosomal RNAs to form the entire ribosome. R-protein expression is adjusted according to the needs of the cell for protein biosynthesis [1].

The coordinated expression of the r-protein genes is controlled at various levels. In prokaryotes, most of them are organized in a comparatively small number of operons [2], which encode a repressor of both transcription and translation that binds to a specific site on the polycistronic RNA [3,4]. In eukaryotes, r-protein gene-specific regulatory elements have been identified in the different promoter sequences, consistent with a coordinated expression. Most eukaryotic r-protein genes have

special short promoters devoid of a TATA box. The transcription start site (mostly a C) is part of an oligopyrimidine tract flanked by GC-rich sequences [5–8]. The mRNA thus starts with a 5'-terminal oligopyrimidine tract (5'-TOP) that is required for translational control of r-proteins [9]. Such a 5'-TOP tract was recently described in the mRNA coding for the medaka (*Oryzias latipes*) r-protein gene S3a [10]. Control of expression at the level of RNA splicing and degradation has also been described (for a review, see [11]).

The r-protein L18 in concert with L5 and L25 interacts with the 5S rRNA, which is a component of the large ribosomal subunit [12]. Only a few genomic sequences have been reported in higher eukaryotes (human [13], *Xenopus* [14], *Caenorhabditis elegans* [15]) and only one promoter study in *Xenopus laevis* [16]. Here we report the molecular cloning of a tilapia (*Oreochromis mossambicus*) L18 ribosomal protein gene (tiL18). We analyzed its expression and performed promoter studies, using a reporter gene strategy, by transient assays in cultured cells or in microinjected zebrafish (*Danio rerio*) and tilapia (*Oreochromis niloticus*) embryos. We observed high levels of expression under ideal metabolic conditions suggesting that the L18 regulatory sequences are likely to drive efficient and constitutive expression of a transgene in tilapia.

* Corresponding author. Fax: +32-4-366-2968.
E-mail address: m.muller@ulg.ac.be (M. Muller).

2. Materials and methods

2.1. Oligonucleotides

Oligonucleotide primers (Eurogentec, Seraing, Belgium) used for PCR procedures were: L18pf1: TCCCTTTT-CGCTCTGAGTCC; L18pr1: TTGGTCCTGCTCAT-GAACAG; T₁₂MG, T₁₂MA, T₁₂MT and T₁₂MC (M represents G, A, or C); nL18pr1: TTCTTGAGCCG-CAGCTGGCTC; fL18pr1: TTGGTCCTGCTCATGAA-CAG; pL18f1: AGCCATGGCCCGATTAGAATGCT-TGGTG; pL18r1: GGGAAATCTTGGACTCAGAGC-GAAAAGGG.

All RT-PCR or PCR products were cloned into the pCRII vector and sequenced.

2.2. Library screening

Using a salmon L18 cDNA (GenBank No. CAC36993) as a probe, 2×10^6 plaques (recombinant λ GEM 11) of a tilapia (*O. mossambicus*) genomic library [17] were screened. Probe labeling, hybridization, phage DNA purification, subcloning and restriction mapping of positive clones were performed according to [18].

2.3. cDNA amplification

Four different anchored oligo(dT) and the L18pf1 primers were used to amplify the L18 cDNA by RT-PCR. Livers from adult tilapia (*O. niloticus*) were dissected and immediately frozen in liquid nitrogen. Poly(A)⁺ RNA was isolated from adult tilapia (*O. niloticus*) livers using the QuickPrep Micro mRNA Purification Kit (Amersham/Pharmacia Biotech). RT-PCR experiments were performed using the Titan One Tube RT-PCR Kit (Boehringer Mannheim). To confirm the identity of the amplified fragment, a nested PCR reaction was performed using the primers L18pf1 and nL18pr1.

2.4. Northern and Southern blots

Total RNA was isolated from different organs of adult tilapia (*O. niloticus*) (brain, muscle, intestine and liver) using TRIzol (Gibco BRL). 10 μ g were separated on a 1% denaturing agarose gel and transferred to a nylon membrane. The integrity and the amounts of RNA loaded on the gel were verified by ethidium bromide staining. DNA was prepared [19], digested with the appropriate restriction enzymes, separated on a 1% agarose gel and transferred to a nylon membrane. A 192 bp tiL18 cDNA fragment was amplified from clone nilot b (see Section 3) using primers L18pf1 and L18pr1 for use as the probe.

2.5. Cap site determination by primer extension

Total RNA from liver (1 μ g) was used to perform primer extension experiments using the 5'-fluorescein labeled fL18pr3 primer. The reaction was treated and analyzed as described [18].

2.6. Reporter gene constructs

A 500 bp PCR fragment (−488/+28), including the appropriate restriction sites at the 5'-end of the pL18f1 and pL18r1 primers, was amplified from the λ 5jtiL18 clone. To obtain tiL18-0.5LacZ, this fragment was introduced into the expression vector pGCV-LacZ [20], where the SV40 promoter had previously been deleted [18]. The tiL18-0.2LacZ expression vector was obtained from the tiL18-0.5LacZ by digestion with *Nco*I and *Xho*I followed by religation. The carp β -actin promoter construct was previously described [25].

2.7. Cell culture and transfection experiments

CV1 cells were grown in DMEM medium (Gibco-BRL) supplemented with 10% fetal bovine serum and 1% penicillin–streptomycin at 37°C in 5% CO₂. For transfections, cells were harvested using trypsin–EDTA and resuspended in the same culture medium (1.5×10^6 cells/ml). 5 pmol of purified plasmid DNA was transfected by the calcium phosphate precipitation procedure as previously described [21]. After 48 h, the cells were harvested [22] and protein concentration and β -galactosidase activity were determined [19]. Triplicate experiments were performed at least twice.

2.8. Microinjection procedure and β -galactosidase assays on injected embryos

Zebrafish care and embryo rearing were as described [23]. Tilapia microinjection and embryo rearing were as described [24]. Fertilized eggs were microinjected into the cytoplasm with 10^6 copies of DNA in 300 μ l of NT buffer (88 mM NaCl, 10 mM Tris–HCl, pH 7.5) at the one-cell stage. β -Galactosidase expression was measured in individual zebrafish and tilapia embryos after 24 and 48 h, respectively, using a fluorometric assay in a TKO100 fluorometer (Hofer). Embryos were homogenized in 45 μ l of 10 mM Tris–HCl, pH 7.5, 10 mM NaCl, 0.1% Triton X-100, incubated at room temperature for 10 min, centrifuged briefly to clarify and 40 μ l used in the methyl umbelliferone galactoside (MUG) assay as detailed in Hofer Technical Bulletin No. 129. Few batches of injected 3–4 day old tilapia fry were also used for histochemical staining in order to visualize β -galactosidase in whole mounts [24].

3. Results

3.1. Genomic library screening

A salmon ribosomal protein L18 cDNA clone was used as a probe to screen 2.0×10^6 λ -phage plaques from a tilapia (*O. mossambicus*) genomic library. One out of 94

positive clones containing approx. 13 kb of insert, λ 5jtiL18, was chosen for restriction mapping and Southern blot analysis (data not shown). A 4.5 kb *Xho*I fragment hybridizing to the L18 probe was subcloned (pB4.5-tiL18) and sequenced. Primers from the 5'- and 3'-ends of the pB4.5-tiL18 insert were used to identify flanking regions by sequencing the λ 5jtiL18 DNA. The complete

```

-488 aaacgcagccaatttcccgattagaatgcttggtgaaaagaagctactatatttttaataat
-428 gagccacgtaaaatctccacttaacttaccaaaacaatgtgtcatatgctaaatataaat
-368 cattctcttgctgctaaacaatttctgatatacaaaatgtaatctaaacaattcattttttta
-308 aagctctgtgatataaaaactacttttttgggtgaaattccggtgtttattttcaaaatacc
-248 tgataaaaaacataatcccttctagtagttttactcaatgtactaatttgcttaaatctt
-188 ataactaaattaaacaaaagatgcgaaactagcaccagggtgaactcgagaaaagctcat
-128 tttctgttttctadcaactggaggcgctatcctatatcatcttgagctgttcggacaggaaac
-68 gcatgctctctaaaccaatcaagcgcctgagatcttagcgcacagcttaaccgcgagacctc
-8 ggatcttcCTTTCCTTTTCGCTCTGAGTCCAAGATGgtaggtcttctgtaacagaattt
53 ctaaaacacgatagtcagactatccgcggtcatdctctgaattaaaccacctgatgtttt
113 agatgaaaacatttacacggtataaacataactttatgtccgattcgtgctaagatttcgt
173 gtgatttgactttataattcacatcagcctataattcttgggagccgacacgggtggtagct
233 ttacgccttcaagttgagaataagtcagatttacaatgggttaaagatgccaaatattat
293 cacaggtcacagtttatttttgtcccagttttaacgtatgtgtcgtaagatcagaagttt
353 cctttttgacactatgtgcatgtttgctgtgcccgttcagagtttagcgttagctgcagag
413 tgtcaactgggtatcggccgcagttatgtgtatgaatatgagctatgtagtggtgtaata
473 tccatcttaaatgtatgttattttgttttcggtgttatattttttattttaaagataaac
533 agttgaggttagatgtatgaggtgttcttgggtcaagattatatgttcttcttacctgatt
593 aatatatgaatctgcttgaatcacttttccagGGAGTCGACATCAGGCACACAAGGAC
653 CGTAAGGTGCACAGGAAAGAGCCAAAGAGCCAGGATATCCTATGAGGCTCCTGGTCAAG
R K V H R K E P K S Q D I Y L R L L V K
829 gt..intron b..agTTGTACAGGTTCCTGGCGCGCCGCTCCAATGTCCCTCAACAG
L Y R F L A R R S N A P F N R
880 GGTCGTCTGAGGAGGCTGTTTCATGAGCAGGACCAACAGGCGCTCCCATGCTGCTCCCG
V V L R R L F M S R T N R P P I A V S R
940 CCTGgt..intron c..agATCCGTAAGATGAAGCTTCCCGTCTGAGAACAAAATG
L I R K M K L P G R E N K I A
2000 CTGTCTGCTGGGAACAGTCACTGATGATGTCAGGATCAGGATATCCCAAGCTCAAGg
V V V G T V T D D V R I Q D I P K L K
2213 t..intron d..agATCTGTGCTCTGAGGGTTACTGATGGTGCCCGCTGAGAACCTG
I C A L R V T D G A R R R I L
2263 AAGGCAGGAGGTGAGGTGATGACCTTCGACCAGCTGGCTTTGGCTTCTCCCAAGGACAA
K A G G Q V M T F D Q L A L A S P K G Q
2323 GGCACAGTGTGCTGTGAGgt..intron e..agGACCCCGTAAAGCCAGAGAGGTTTA
G T V L L L S G P R K A R E V Y
3701 CAGGCACTTTGAAAAGGCTCCTGGAACCCCTCACAGCCACACCAAGgt..intron f..
R H F G K A P G T P H S H T K
4830 agCCCTACGTCCGCTCCAAGGGCAGGAAGTTCGAGAGAGCCCGTGGTTCGAGGCCAGCT
P Y V R S K G R K F E R A R G R R A S C
4890 GCGGCTACAAGAACTAAtgctttttgttttctactctgataccataaaaggctggtgtg
G Y K N *
4950 acaaaatgtctctgtgtttttgtttgagtgttctccttgcaaaatacacccttc
5010 attgttaatatggtgaagctcatgttaagcatcagccaggctggaggacaagaatggca
5070 tgtggctaataaactgatgtccccacgtaaatgttacaggacagctctttaaattggcat
5130 ttatcaaccggcctgataacaagtgagttggccaggaagtgtgctgtcaatgatggg
5190 agaatgtcgggtgggtggtgactgttttccttatcgtcaattgggttctctccgcgct
5250 cagagctgctcctcgcgtcctatacatctgc
    
```

Fig. 1. The nucleotide sequence of a tilapia L18 gene and the deduced amino acid sequence in the coding region are shown. Upper case letters are used for the coding sequence. The transcription start site is indicated by +1. An asterisk denotes the stop codon. Intron positions are indicated. The putative polyadenylation signals, CAAT box, T-rich regions and the putative α , β , γ or δ elements are shadowed. The L27 Box-A is boxed and the GABP inverted binding sites are indicated by arrows. Repeat sequences are in bold letters and italic bold letters show the oligonucleotide used to determine the transcription start site. The sequence reported in this paper has been deposited in the EMBL database under accession No. AF240376.

gene sequence of a tilapia L18 gene and about 0.5 kb upstream from the ATG, including the 5'-UTR sequence, was isolated (Fig. 1).

3.2. Structural analysis of the tilapia L18 gene

To determine the position of the L18 introns, RT-PCR reactions were performed on RNA from a tilapia (*O. niloticus*). Two niloticus L18 cDNA clones were obtained (nilot a and nilot b) (GenBank database accession No. AF240374 and AF240375, respectively). Only a few conservative nucleotide changes were detected between the three tilapia sequences: the coding sequence deduced from the *O. mossambicus* gene differs by 1 bp from the *O. niloticus* clone b and 4 bp from the *O. niloticus* clone a.

Seven exons were found, separated by small introns (Fig. 1); the gene structure and the splice positions are conserved as compared to the L18 equivalent gene in *X. laevis*, L14 [14]. Amino acid sequence comparison of the encoded 188 amino acid protein to the GenBank database revealed a high level of homology to other L18 sequences: 85.5% identity with salmon (GenBank No. CAC36993), 85.7% with rat [25] and 85.7% with L14a and 85.1% with L14b (L18 equivalents) from *X. laevis* [16] (Fig. 2A).

By comparing the retention time of a fragment obtained by primer extension of liver total RNA with the retention times of the products from a sequencing reaction performed on the cDNA clone nilot b using the same primer, we were able to locate the start site at 27 bp upstream from the ATG (Figs. 1 and 2B). The poly(A) signal was

A

TilapiaM	1	MGVDIRHNKDRKVRKEPKSQDIYLRLLLVKLYRFLARRSNAPFNRVVLRRLFMSRTNRPPPIAVSRLIRKM	70
TilapiaN	1	70
XenopusA	1	..I.....R.....T.SS.....K.....LSM.....	70
XenopusB	1	..I.....R.....T.SS.....K.....LSM.....	70
Salmon	1RP.....D.....T...K...W.....H...MS..M...	63
Rat	1R.....T.ST..Q...K.....LSL..M....	70
Mouse	1R.....T.ST..Q...K.....LSL..M....	70
Human	1R.....T.ST..Q...K.....LSL..M....	70
TilapiaM	71	KLPGRENKIAVVVGTVDVRIQDIPKLIKICALRVTDGARRRILKAGGQVMTFDQLALASPKGQGTVLLS	140
TilapiaN	71	140
XenopusA	71	..R...T...CI..A...H...TV...KL..S...S.....I.....A...N....	140
XenopusB	71	..Q...T...YI...H...V...KI..S..D..S...S...I.....A...N....	140
Salmon	64RT.....V...K..RRL..T.....I.....A.....	133
Rat	71T.....I.....LEV...V...SSR..S.....KIL.....E...R.....	140
Mouse	71T.....I.....LEV...V...SSR..S.....KIL.....E...R.....	140
Human	71T.....I.....V.EV...V...SR..S...R...KIL.....D...C.....	140
TilapiaM	141	GPRKAREVYRHFVKAPGTPHSHTKPYVRSKGRKFERARGRRASCYKN*	188
TilapiaN	141*	188
XenopusA	141S...R...L.....R...*	188
XenopusB	141R...L.....R...*	188
Salmon	134PD.S....V.....R...*	180
Rat	141G.....R...*	188
Mouse	141G.....R...*	188
Human	141G.....R...*	188

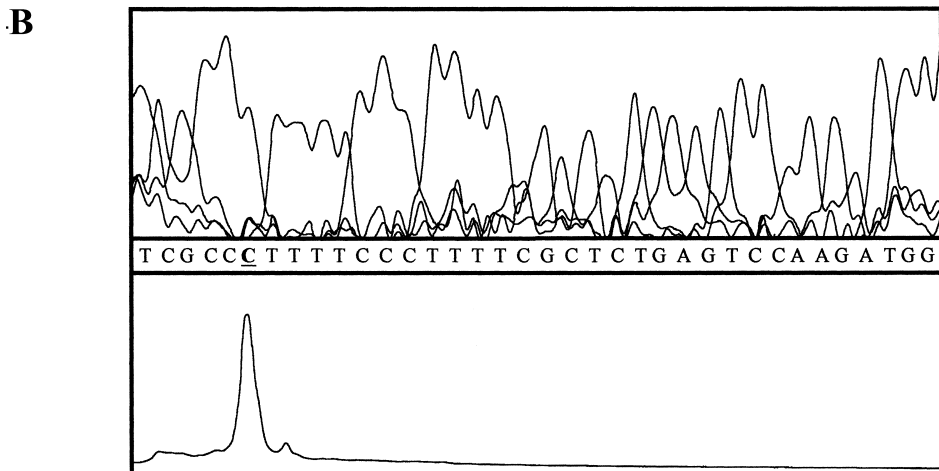


Fig. 2. A) Amino acid sequence comparison of the tilapia (AAF64459 and AAF64458), salmon (CAC36993), *Xenopus* (P02412 and P09897), mouse (BAB26043), human (NP_000970) and rat L18 (NP_112364) sequences. (B) Transcription start site. Primer extension was performed using adult tilapia liver RNA. Comparison of the primer extension products with the products of a sequencing reaction on the cDNA clone nilot b is shown.

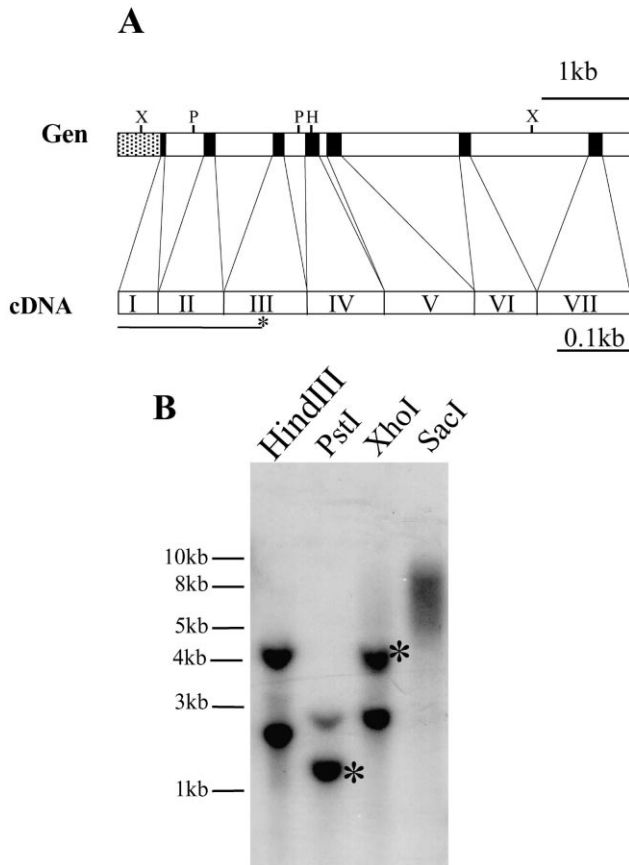


Fig. 3. Southern blot. (A) Schematic representation of the tiL18 gene and the deduced cDNA. Introns are indicated by lower case letters in the gene and exons by roman numerals in the cDNA. The probe used is indicated by (-*). Restriction sites are indicated on top of the gene: X, *XhoI*; H, *HindIII*; P, *PstI*; no *SacI* site in the cloned genomic fragment. (B) Tilapia DNA (10 µg) was digested with the indicated restriction enzymes, separated on a 1% agarose gel and transferred to nylon membrane. Bands corresponding to fragments predicted from the tiL18 sequence are indicated (*).

localized at position +4933 by comparing the genomic and cDNA sequences. An additional putative poly(A) signal was localized at position +5077 (Fig. 1).

Putative *cis*-acting sequences were identified using the tfsites.dat file in the GCG sequence analysis package (Fig. 1). Two repeat sequences were detected at positions -355 and -328, two T-rich regions and one CAAT box were found at positions -320 and -289 and -55, respectively. Sequences corresponding to the classical *cis*-elements for higher eukaryotic r-protein promoters (element α binding the RFX-1 transcription factor, β binding GABP, γ binding γ -factor and δ binding NF-E1) were found: two α sequences at positions -159 (α 1) and -125 (α 2); one β sequence at -80; one γ sequence at -38; and two δ elements at +23 (δ 1) and +76 (δ 2). In addition, two inverted putative GABP binding sites were found at positions -4 and +3. A sequence matching Box-A as described in the mouse L27 and L7 r-protein gene promoters was found at position -20.

3.3. Southern blotting

DNA was prepared from adult tilapia (*O. mossambicus*) livers and Southern blot analysis was performed using a 189 bp tiL18 cDNA probe covering exons 1–3 (Fig. 3A). Two fragments of 4.2 kb and 1.3 kb were detected in DNA digested with *XhoI* and *PstI* respectively, corresponding to those expected from the tiL18 genomic sequence (Fig. 3B, bands labeled *). The additional weak *PstI* fragment might correspond to an adjacent fragment bound by the 5'-end (exon 1) of the probe. In contrast, the second 3.0 kb *XhoI* fragment revealed by the probe is not explained by the isolated tiL18 sequence. Digestion with *SacI* or *HindIII* (one site each in the tiL18 sequence) revealed one and two genomic fragments respectively. These results suggest the presence of at least two genes or alleles homologous to L18.

3.4. tiL18 expression by Northern blotting

Total RNA from different tissues of a tilapia (*O. niloticus*) was prepared and analyzed by Northern blotting using a 192 bp cDNA fragment as a probe. In all the tissues, a single RNA of approx. 0.6 kb was detected. Although the signal in liver seems to be somewhat higher, no dramatic differences were found (Fig. 4).

3.5. Transfection experiments

Transient expression studies were performed in CV1 cells (derived from monkey kidney). Two expression vectors, tiL18-0.5LacZ and tiL18-0.2LacZ, were used which contain the LacZ reporter gene driven by the complete isolated regulatory sequences and a 300 bp 5'-deleted sequence respectively. A high β -galactosidase activity was obtained after transfection of both constructs, comparable to that observed with the positive control pGCV-LacZ containing the SV40 promoter (Fig. 5).

3.6. Transient expression in zebrafish and tilapia embryos

Transient expression was observed in both zebrafish and tilapia individual embryo extracts (Fig. 6A,B), although the levels of expression seen in tilapia were considerably

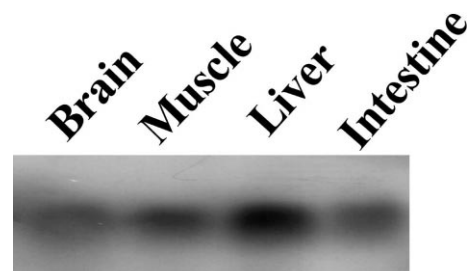


Fig. 4. Northern blot. Expression analysis in different organs. The 192 bp tiL18 cDNA fragment was used as the probe.

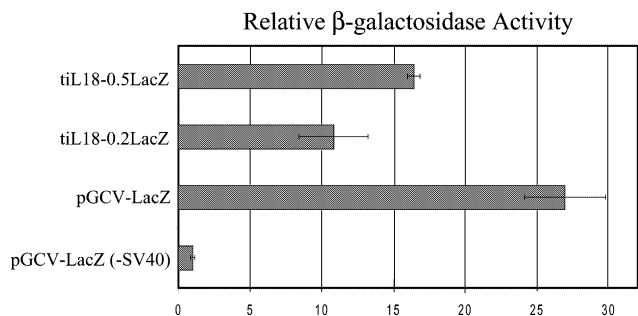


Fig. 5. Transient expression of tiL18 promoter/LacZ constructs in cultured cells. CV1 cells were transfected with either reporter construct or the pGCV-LacZ (transfection positive control). β -Galactosidase activity, normalized to the protein content of the extract, relative to the negative control pGCV-LacZ (-SV40) is shown.

higher than in zebrafish (note different scales for fluorescence units). In tilapia, the overall mean expression of the tiL18-0.2LacZ construct was significantly better ($P < 0.01$) than the tiL18-0.5LacZ construct (respectively $80\,000 \pm 10\,000$ and $7\,000 \pm 3\,000$ fluorescence units), while expression from the carp β -actin promoter, strongly active in tilapia [24], was only 2-fold higher ($180\,000 \pm 60\,000$). In zebrafish, expressions from both constructs were not sig-

nificantly different (800 ± 150 and 1000 ± 200 fluorescence units, respectively). Tilapia embryos microinjected with the tiL18-0.2LacZ construct were analyzed by performing histochemical staining on whole mounts. Expression was observed in the YSL (not shown) and in defined patches of cells in the embryo (an example is shown Fig. 6D).

4. Discussion

Although heterologous regulatory sequences are often used to express transgenes in fish with success, a number of researchers have recommended the use of fish-derived sequences for appropriately regulated and high levels of expression. In addition, the unacceptability to the food market of transgenic fish containing heterologous sequences leads to a demand for new fish promoters [26]. We present a new, strong fish promoter that can be used to drive ubiquitous expression of a gene of interest. The tilapia was chosen because it is one of the best candidate fish for the forecasted massive expansion of aquaculture in the tropics.

We have cloned, sequenced and carried out an expres-

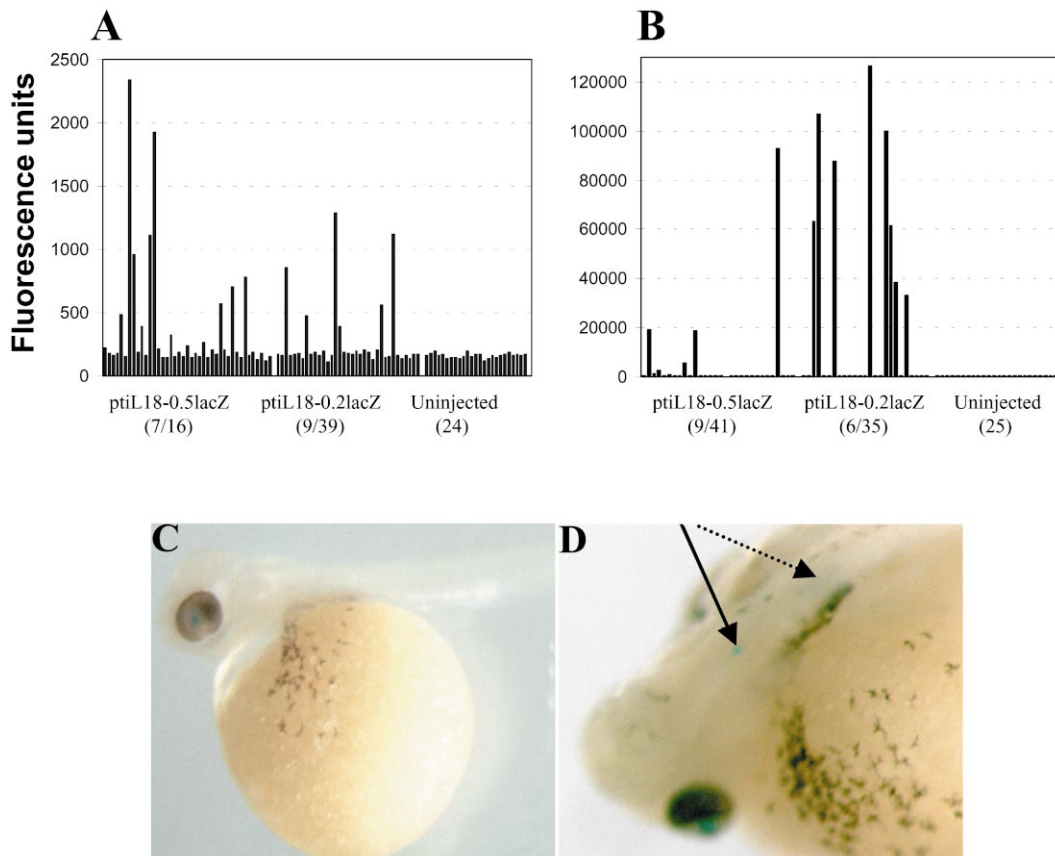


Fig. 6. Transient expression of tiL18 promoter/LacZ constructs in microinjected fish embryos. The reporter constructs were microinjected into zebrafish and tilapia fertilized eggs and β -galactosidase expression was assessed. (A,B) Results from MUG assays on 24 h and 48 h individual zebrafish and tilapia embryos, respectively. Each bar represents β -galactosidase expression in terms of fluorescence units in one individual embryo. We indicate at the bottom of the graphs the number of expressing/injected embryos. (C,D) X-Gal staining of 4 day old tilapia embryos. (C) Uninjected control; (D) injected with tiL18-0.2LacZ. Arrows point at blue colored cells near the surface (plain arrow) or deeper inside (dotted arrow) the embryo.

sion analysis of a tilapia L18 gene. The complete genomic region including about 500 bp of the 5'-flanking sequence from *O. mossambicus* and two different cDNA sequences from *O. niloticus* are presented. Amino acid sequences, gene structure and the positions of the cap site (+1) and the poly(A) signal (+4933) are conserved as compared to other L18 genes.

In mouse, several non-expressing intron-less pseudogenes for L18 have been described [27]. This observation has also been made for other r-protein genes [5,6]. Typically, mammals have a single expressed r-protein gene and various processed pseudogenes [28]. Our results imply the existence of at least two transcribed L18 genes (or alleles) in *O. niloticus*, as suggested by the two different isolated cDNAs. This is consistent with the presence of at least two genes (or alleles) in *O. mossambicus* as shown by Southern blotting. The presence of two different cDNA clones in *O. niloticus* suggests that both genes are transcribed in tilapia; no evidence for additional L18 processed pseudogenes was found.

The tiL18 promoter is devoid of a TATA box and its transcription start site, located 27 bp upstream from the ATG, comprises the conserved consensus sequence CYTYCYTYTYC (Y=C or T) previously described for r-protein genes [5–8]. The tiL18 5'-region contains two repeat sequences (–355 and –328) and two T-rich regions (–320 and –289). However, as the minimal promoter construct (tiL18-0.2LacZ) lacking these regions is still able to drive a significant expression, we focused our analysis on the more proximal promoter region. In higher eukaryotes, the promoter region of r-proteins is organized into four elements: α (RFX-1), β (GABP), γ (g-factor) and δ (NF-E1) [29]. Potential sites corresponding to these elements were found in the proximal tiL18 regulatory region and their organization was similar to that in other r-protein genes (Fig. 1). Two α (α 1, α 2) and two δ elements (δ 1, δ 2) were found. Both δ elements are missing in our reporter constructs (site δ 1 overlaps the ATG start codon and δ 2 is located in the first intron), suggesting that they are not essential for transcriptional activity. Similarly, the δ site in the first exon of *X. laevis* L1 and L14 r-protein genes was shown to play a marginal role in transient expression of a reporter gene [30]. A region (TCGCGAGA) at position –20 is identical in sequence and position to the Box-A-like element described in the human and mouse L27 r-protein genes [31] and similar to the Box-A of the mouse L7a r-protein which has been shown to bind nuclear factors [32]. Finally, two inverted GABP binding sites were found around the transcription start site, which are identical in sequence and position to those found in the mouse S16 r-protein and cytochrome *c* oxidase CO4 and CO5b genes. These sites were demonstrated to cause a significant reduction in the S16 promoter activity [33] and a transcriptional activation in the CO4 and CO5b transcription [34,35]. The exact role of these sites in the tiL18 gene promoter remains to be established. In conclusion, the

α , β and γ and probably the CAAT box and the box-A elements are sufficient to drive good levels of expression, although we cannot reject the possibility that the addition of downstream sequences (δ elements) could improve the expression of these promoter sequences further.

The L18 promoter function was tested by transient expression in cell culture and in vivo in zebrafish and tilapia embryos. In cell culture, high level LacZ expression was obtained using both constructs. No significant difference was observed between LacZ expression of the longer tiL18-0.5LacZ construct when compared to the short tiL18-0.2LacZ construct in cell culture and in the zebrafish injections. In contrast, in tilapia embryos, the expression obtained with the short construct was significantly higher than with the longer construct ($P < 0.01$). This is highly suggestive of the existence of a tilapia-specific repressor region in the upstream region of the longer construct. It is possible that a transcription factor responsible for the repression is highly expressed in tilapia embryos.

Expression of the L18 gene was observed in *O. mossambicus* in every tissue tested as shown by Northern blotting. We have also recently demonstrated tissue-independent expression of the L18 gene in *O. niloticus* by semiquantitative RT-PCR [18]. Consistent with these results, our microinjection experiments in zebrafish and tilapia embryos did not reveal any particular preference for a given tissue. Expression was seen in a mosaic fashion throughout the embryo and was often restricted to the YSL, a common feature of transient expression in microinjected fish embryos [36].

In conclusion, we present the structure of a tilapia L18 gene and the first promoter sequence and function analysis of a fish ribosomal protein gene. We show that this promoter is likely to be able to drive high levels of expression of a coupled gene of interest in fish.

Acknowledgements

This work was supported by the 'Région Wallone (ULg 1815); the 'Services Fédéraux des Affaires Scientifiques, Techniques et Culturelles' (PAI P4/30 and 'Actions de Recherche Concertées': 95/00-193); the Fonds National de la Recherche Scientifique (FNRS) (–3.4537.93 and –9.4569.95), the EU (No. BIO4-CT97-0554). M.M. is a 'Chercheur qualifié' at the Fonds National de la Recherche Scientifique (FNRS). A.M. held fellowships from 'CGRI' and 'ULg patrimoine'. L.F.M held a scholarship from CAPES, Brazil–BEX1318/99-3).

References

- [1] L.S. Kraakman, W.H. Mager, J.J. Grootjans, R.J. Planta, Functional analysis of the promoter of the gene encoding the acidic ribosomal protein L45 in yeast, *Biochim. Biophys. Acta* 1090 (1991) 204–210.

- [2] M. Nomura, R. Gourse, G. Baughman, Regulation of the synthesis of ribosomes and ribosomal components, *Annu. Rev. Biochem.* 53 (1984) 75–117.
- [3] M. Nomura, Regulation of ribosome biosynthesis in *Escherichia coli* and *Saccharomyces cerevisiae*: diversity and common principles, *J. Bacteriol.* 181 (1999) 6857–6864.
- [4] T. Allen, P. Shen, L. Samsel, R. Liu, L. Lindahl, J.M. Zengel, Phylogenetic analysis of L4-mediated autogenous control of the S10 ribosomal protein operon, *J. Bacteriol.* 181 (1999) 6124–6132.
- [5] K.P. Dudov, R.P. Perry, The gene family encoding the mouse ribosomal protein L32 contains a uniquely expressed intron-containing gene and an unmutated processed gene, *Cell* 37 (1984) 457–468.
- [6] L.M. Wiedemann, R.P. Perry, Characterization of the expressed gene and several processed pseudogenes for the mouse ribosomal protein L30 gene family, *Mol. Cell. Biol.* 4 (1984) 2518–2528.
- [7] M. Wagner, R.P. Perry, Characterization of the multigene family encoding the mouse S16 ribosomal protein: strategy for distinguishing an expressed gene from its processed pseudogene counterparts by an analysis of total genomic DNA, *Mol. Cell. Biol.* 5 (1985) 3560–3576.
- [8] N. Hariharan, R.P. Perry, Functional dissection of a mouse ribosomal protein promoter: significance of the polypyrimidine initiator and an element in the TATA-box region, *Proc. Natl. Acad. Sci. USA* 87 (1990) 1526–1530.
- [9] S. Levy, D. Avni, N. Hariharan, R.P. Perry, O. Meyuhas, Oligopyrimidine tract at the 5' end of mammalian ribosomal protein mRNAs is required for their translational control, *Proc. Natl. Acad. Sci. USA* 88 (1991) 3319–3323.
- [10] R. Shemer, I. Eibschitz, B. Cavari, Isolation and characterization of medaka ribosomal protein S3a (fte-1) cDNA and gene, *Gene* 250 (2000) 209–217.
- [11] C. Yanofsky, Transcription attenuation: once viewed as a novel regulatory strategy, *J. Bacteriol.* 182 (2000) 1–8.
- [12] R.A. Setterquist, G.K. Smith, T.H. Oakley, Y.H. Lee, G.E. Fox, Sequence, overproduction and purification of *Vibrio proteolyticus* ribosomal protein L18 for in vitro and in vivo studies, *Gene* 183 (1996) 237–242.
- [13] M. Puder, G.F. Barnard, R.J. Staniunas, G.D. Steele Jr., L.B. Chen, Nucleotide and deduced amino acid sequence of human ribosomal protein L18, *Biochim. Biophys. Acta* 1216 (1993) 134–136.
- [14] E. Beccari, P. Mazzetti, The nucleotide sequence of the ribosomal protein L14 gene of *Xenopus laevis*, *Nucleic Acids Res.* 15 (1987) 1870–1872.
- [15] The *C. elegans* Sequencing Consortium, Genome sequence of the nematode *C. elegans*: a platform for investigating biology, *Science* 282 (1998) 2012–2018.
- [16] F. Carnevali, C. La Porta, V. Iardi, E. Beccari, Nuclear factors specifically bind to upstream sequences of a *Xenopus laevis* ribosomal protein gene promoter, *Nucleic Acids Res.* 17 (1989) 8171–8184.
- [17] D. Swennen, A.C. Poncelet, B. Sekkali, F. Rentier-Delrue, J.A. Martial, A. Belayew, Structure of the tilapia (*Oreochromis mossambicus*) prolactin I gene DNA, *DNA* 11 (1992) 673–684.
- [18] A. Molina, F. Biemar, F. Muller, A. Iyengar, P. Prunet, N. Maclean, J.A. Martial, M. Muller, Cloning and expression analysis of an inducible HSP70 gene from tilapia fish, *FEBS Lett.* 474 (2000) 5–10.
- [19] J. Sambrook, E.F. Fritsch, T. Maniatis, *Molecular Cloning: a Laboratory Manual*, 2nd edn., Cold Spring Harbor Laboratory Press, Cold Spring Harbor, NY, 1989.
- [20] D.A. Poncelet, E.J. Bellefroid, P.V. Bastiaens, M.A. Demoit  , J.C. Marine, H. Pendeville, Y. Alami, N. Devos, P. Lecocq, T. Ogawa, M. Muller, J.A. Martial, Functional analysis of the ZNF85 Krab zinc finger protein, a member of the highly homologous ZNF91 gene family, *DNA Cell Biol.* 17 (1998) 931–942.
- [21] B. Sekkali, A. Belayew, M. Bortolussi, J.A. Martial, M. Muller, Pit-1 mediates cell-specific and cAMP-induced transcription of the tilapia GH gene, *Mol. Cell. Endocrinol.* 152 (1999) 111–123.
- [22] A.R. Brasier, J.E. Tate, J.F. Habener, Optimized use of the firefly luciferase assay as a reporter gene in mammalian cell lines, *BioTechniques* 7 (1989) 1116–1122.
- [23] M. Westerfield, *The Zebrafish Book. A Guide for the Laboratory Use of Zebrafish (Danio rerio)*, University of Oregon Press, Eugene, OR, 1993.
- [24] M.A. Rahman, A. Iyengar, N. Maclean, Co-injection strategy improves integration efficiency of a growth hormone gene construct, resulting in lines of transgenic tilapia (*Oreochromis niloticus*) expressing an exogenous growth hormone gene, *Transgenic Res.* 6 (1997) 369–378.
- [25] Y. Aoyama, Y.L. Chan, O. Meyuhas, I.G. Wool, The primary structure of rat ribosomal protein L18a, *FEBS Lett.* 247 (1989) 242–246.
- [26] A. Iyengar, F. M  ller, N. Maclean, Regulation and expression of transgenes in fish – a review, *Transgenic Res.* 5 (1996) 147–166.
- [27] E. Peled-Yalif, I. Cohen-Binder, O. Meyuhas, Isolation and characterization of four mouse ribosomal-protein-L18 genes that appear to be processed pseudogenes, *Gene* 29 (1984) 157–166.
- [28] W.H. Mager, Control of ribosomal protein gene expression, *Biochim. Biophys. Acta* 949 (1988) 1–15.
- [29] G. Safrany, R.P. Perry, The relative contributions of various transcription factors to the overall promoter strength of the mouse ribosomal protein L30 gene, *Eur. J. Biochem.* 230 (1995) 1066–1072.
- [30] E. De Rinaldis, G. Pisaneschi, O. Camacho-Vanegas, E. Beccari, The binding sites for *Xenopus laevis* FIII/YY1 in the first exon of L1 and L14 ribosomal protein genes are dispensable for promoter expression, *Eur. J. Biochem.* 255 (1998) 563–569.
- [31] J. Kusuda, M. Hirai, R. Tanuma, M. Hirata, K. Hashimoto, Genomic structure and chromosome location of RPL27A/Rpl27a, the genes encoding human and mouse ribosomal protein L27A, *Cytogenet. Cell Genet.* 85 (1999) 248–251.
- [32] P. Colombo, M. Fried, Functional elements of the ribosomal protein L7a (rpL7a) gene promoter region and their conservation between mammals and birds, *Nucleic Acids Res.* 20 (1992) 3367–3373.
- [33] R.R. Genuario, R.P. Perry, The GA-binding protein can serve as both an activator and repressor of ribosomal protein gene transcription, *J. Biol. Chem.* 271 (1996) 4388–4395.
- [34] R.S. Carter, N.K. Bhat, A. Basu, N.G. Avadhani, The basal promoter elements of murine cytochrome *c* oxidase subunit IV gene consist of tandemly duplicated ets motifs that bind to GABP-related transcription factors, *J. Biol. Chem.* 267 (1992) 23418–23426.
- [35] J.V. Virbasius, C.A. Virbasius, R.C. Scarpulla, Identity of GABP with NRF-2, a multisubunit activator of cytochrome oxidase expression, reveals a cellular role for an ETS domain activator of viral promoters, *Genes Dev.* 7 (1993) 380–392.
- [36] D.W. Williams, F. M  ller, F.L. Lavender, L. Orb  n, N. Maclean, High transgene activity in the yolk syncytial layer affects quantitative transient expression assays in zebrafish (*Danio rerio*) embryos, *Transgenic Res.* 5 (1996) 433–442.