



EUROSOIL 2012

Bari, 6th July 2012

Soil survey data, a heritage to preserve: the case of Belgium

Xavier LEGRAIN ¹ & Stefaan DONDEYNE ²

¹ University of Liege – Gembloux Agro-Bio Tech – “Soil & Water Systems” Unit

² Catholic University of Leuven – Department Earth and Environmental Sciences



Outline

- The Soil Map of Belgium
- Soil Survey is more than maps
- Preserving our heritage to construct the future





THE SOIL MAP OF BELGIUM

The Soil Map of Belgium

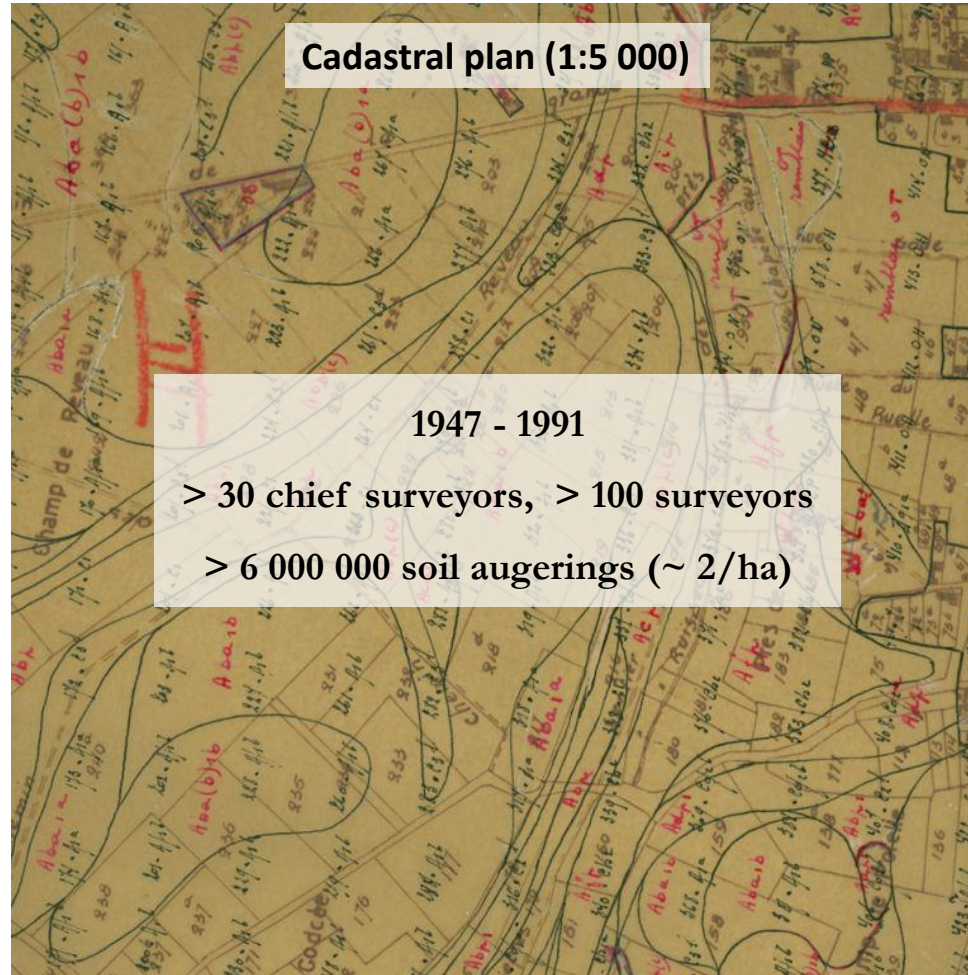
Cadastral plan (1:5 000)

1947 - 1991

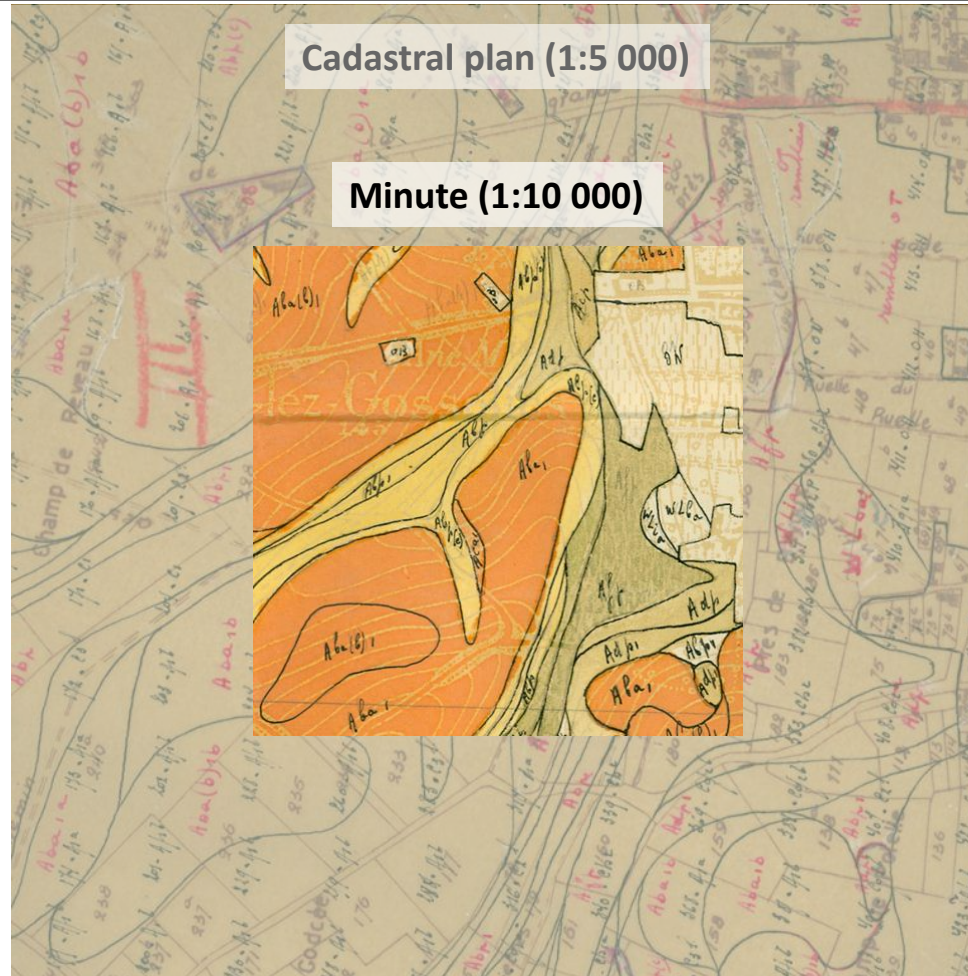
> 30 chief surveyors, > 100 surveyors

> 6 000 000 soil augerings (~ 2/ha)

Eurosoil 2012 – Bari – 6th July 2012

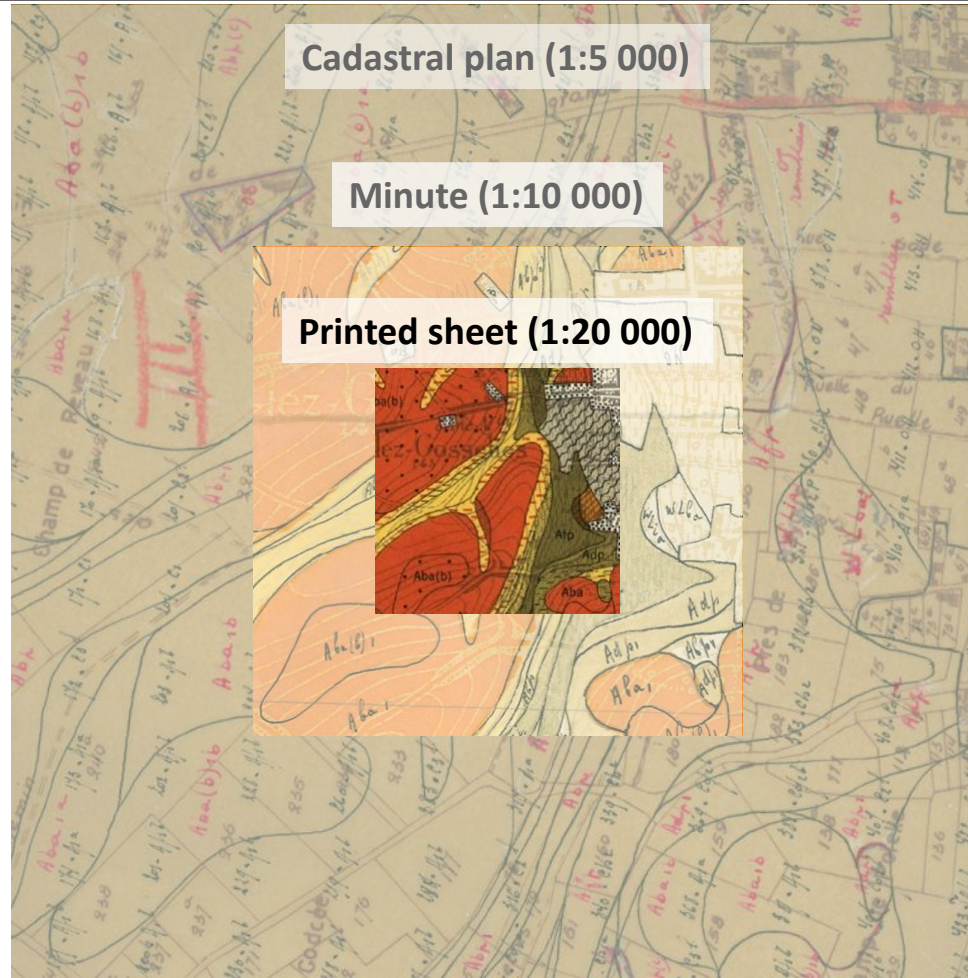


The Soil Map of Belgium

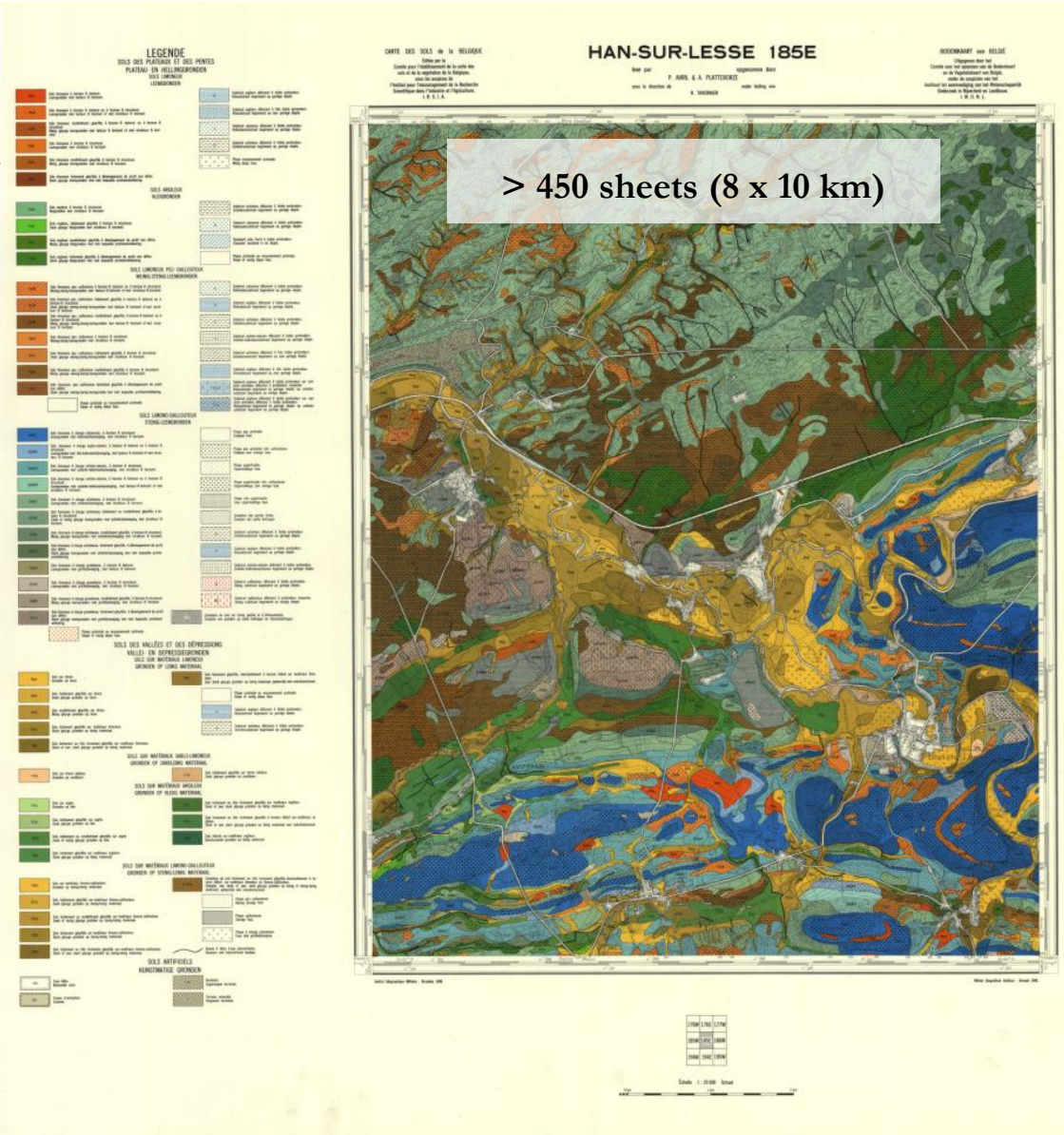


Eurosoil 2012 – Bari – 6th July 2012

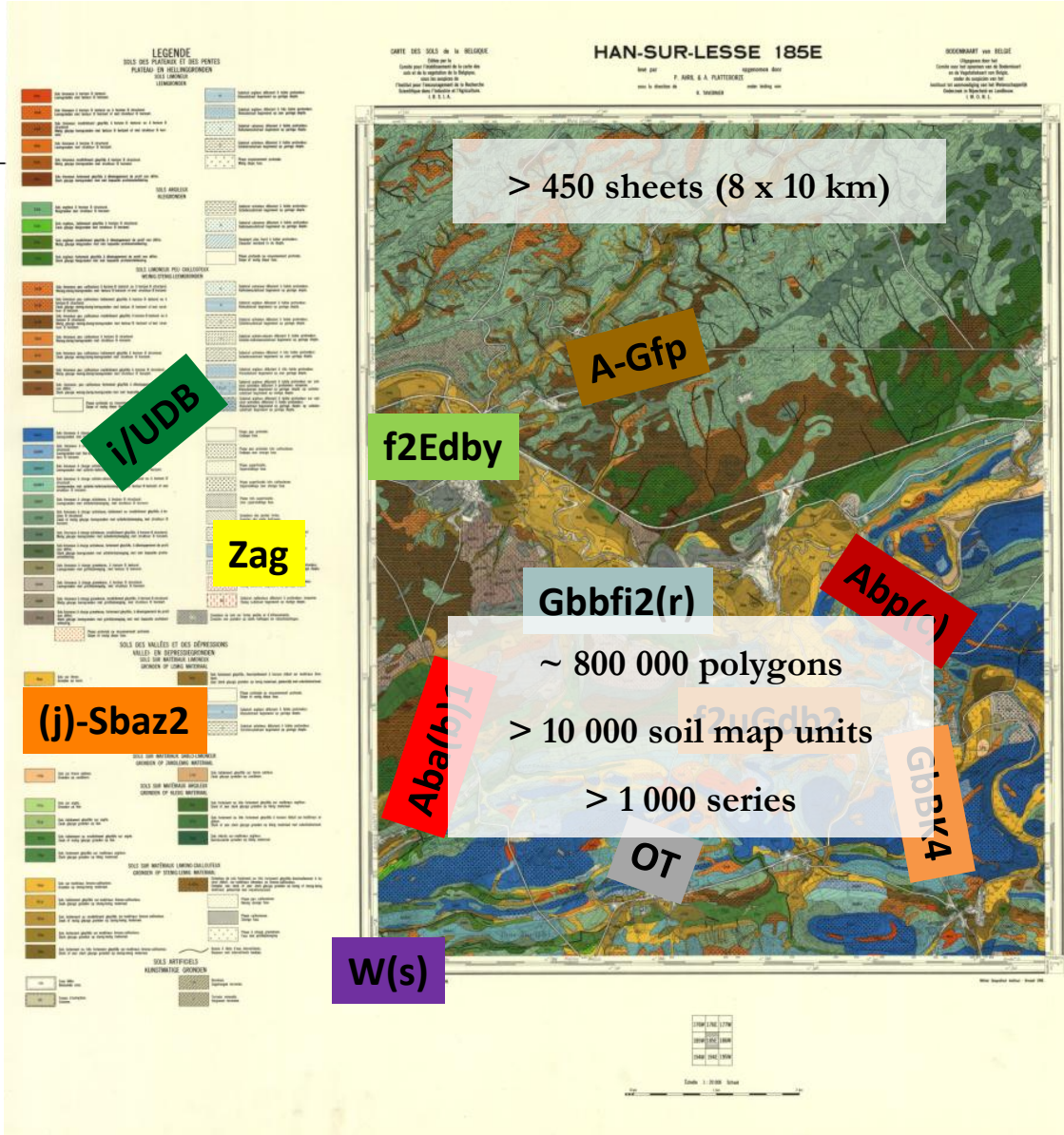
The Soil Map of Belgium



Eurosoil 2012 – Bari – 6th July 2012

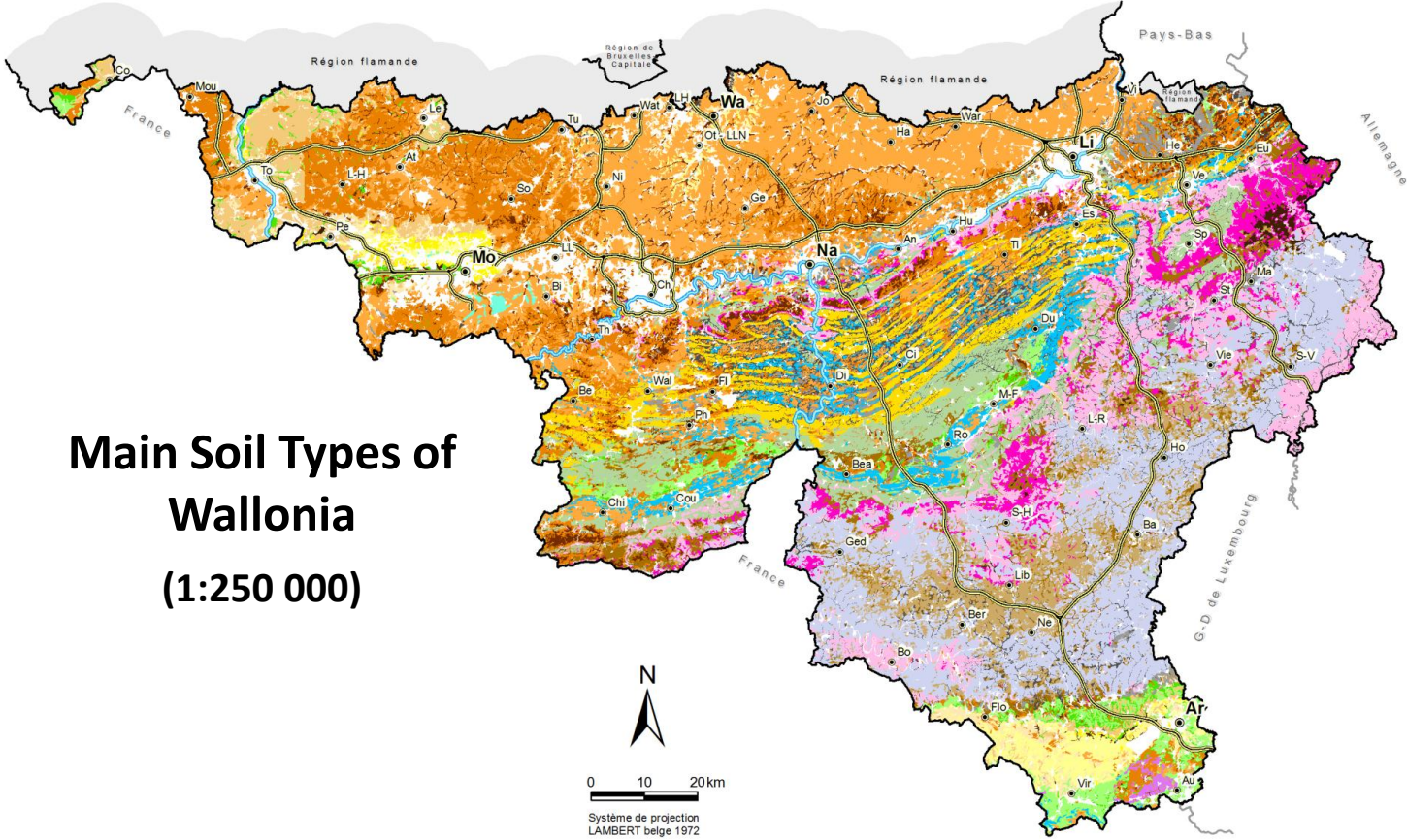


- 6th July 2012



- 6th July 2012

The Soil Map of Belgium



Main Soil Types of Wallonia (1:250 000)

Eurosoil 2012 – Bari – 6th July 2012



SOIL SURVEY IS MORE THAN MAPS

Soil Survey is more than maps

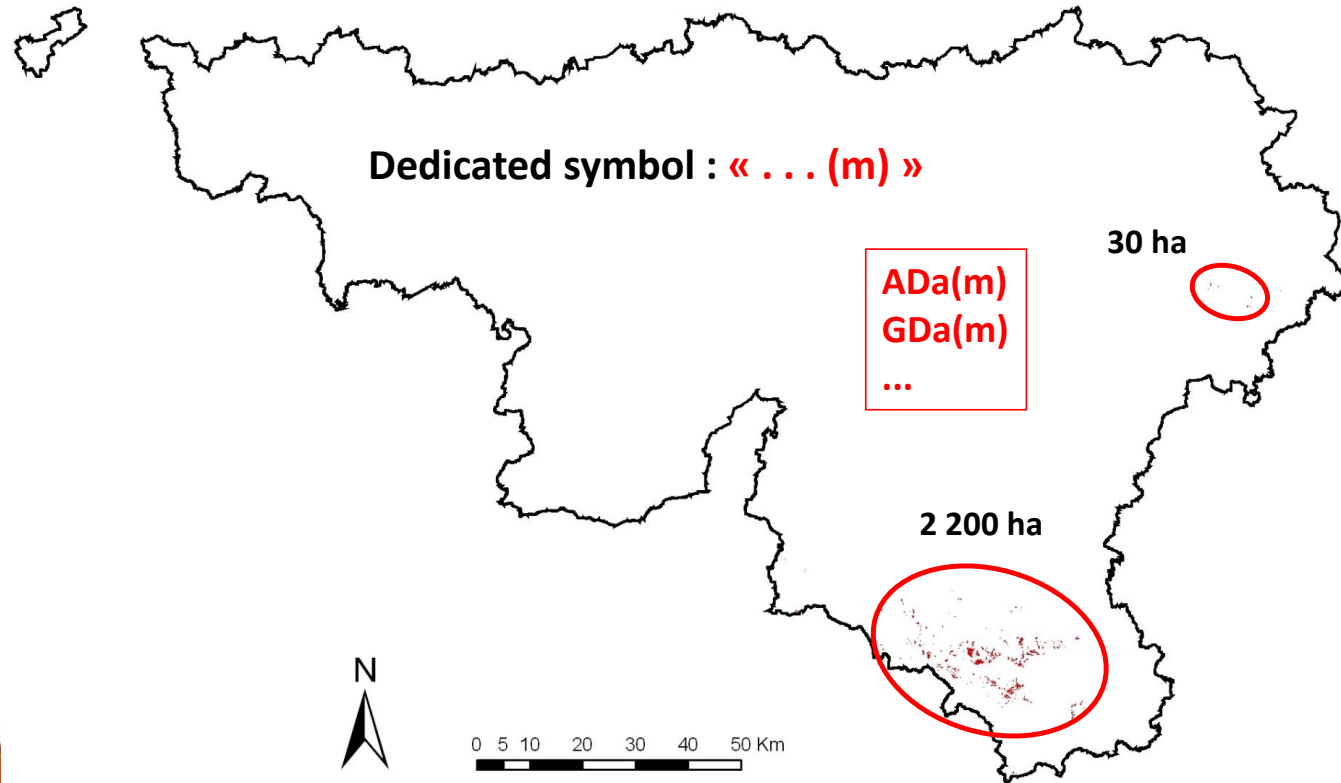
➤ Associated products

- ✓ explanatory booklets (one per sheet)
- ✓ soil association maps
- ✓ 15 000 profiles described and analyzed
- ✓ regional monographs
- ✓ scientific papers
(e.g.: more than 50 articles in the journal *Pédologie*)



Soil Survey is more than maps

Fragipans in the soil map



EUROSOIL 2012 – Bari – 6th July 2012

Soil Survey is more than maps

Explanatory booklets

Official definition

*Série Ghx : sols limoneux peu caillouteux fortement gleyifiés
à développement de profil non défini*

Ghx1 : phase profonde ou moyennement profonde

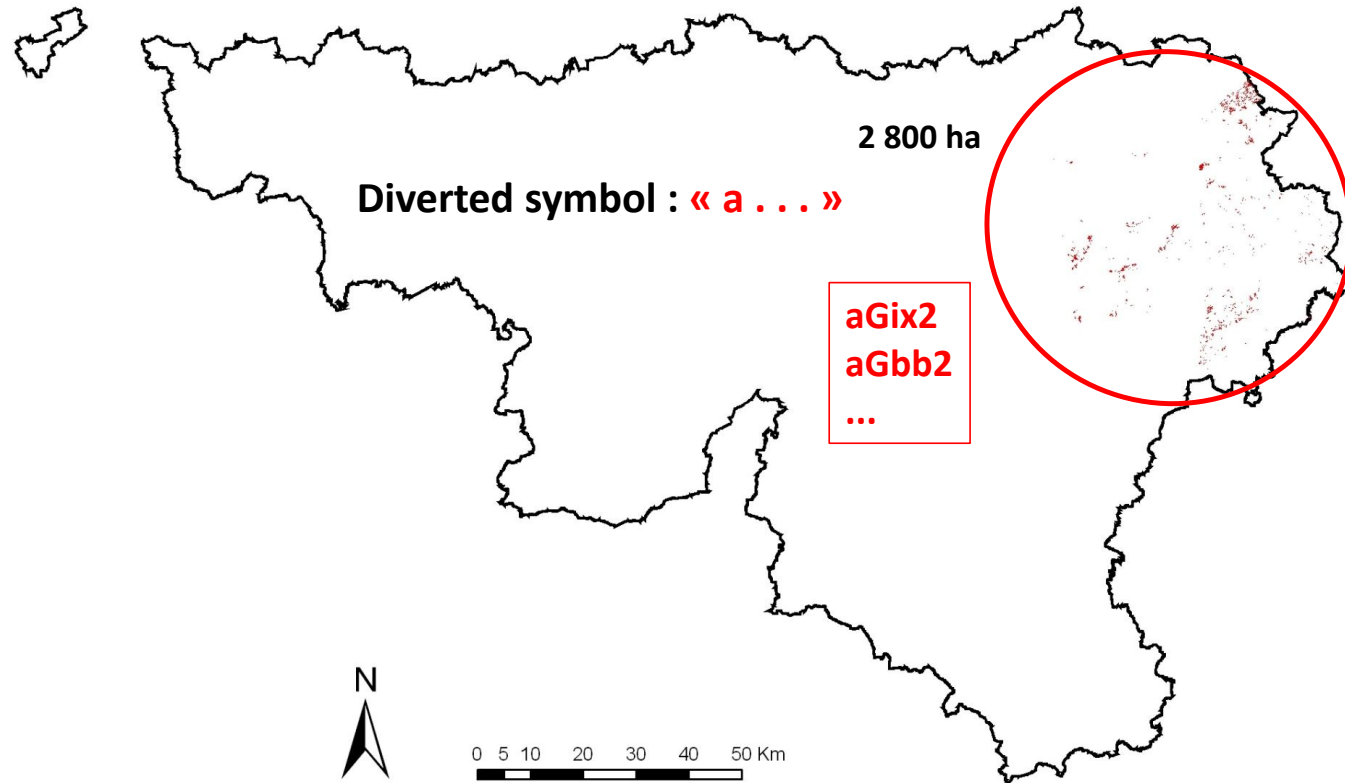
aGhx2 : phase à substrat fortement altéré débutant à faible profondeur

uGhx2 : phase à substrat argileux débutant à faible profondeur

Remarks

Vesdre. Les autres phases ne se rencontrent que dans le Massif ardennais, où l'on peut considérer aGhx comme un sol à fragipan de loin plus fréquent dans le cadre que uGhx.

Soil Survey is more than maps



Eurosoil 2012 – Bari – 6th July 2012

Soil Survey is more than maps

Soil profile data

103 profiles with fragipans

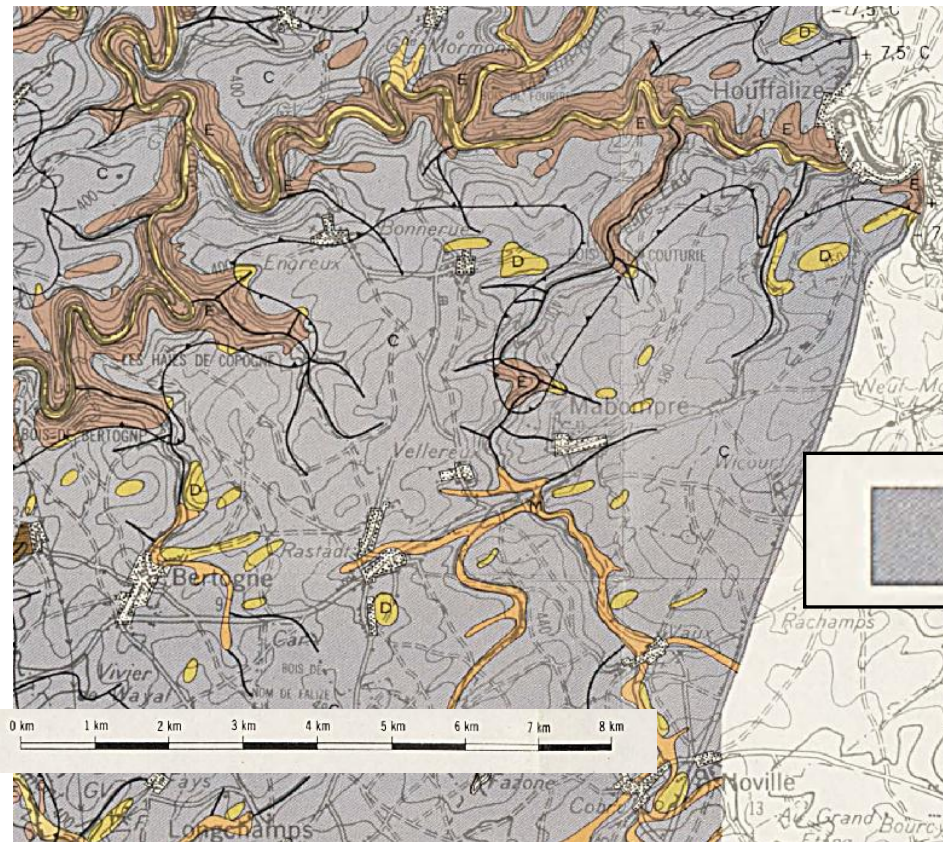
A map of Italy with a black outline, showing the distribution of 103 soil profiles with fragipans. The profiles are marked with small black dots scattered across the Italian peninsula and islands. The text "103 profiles with fragipans" is centered on the map.

Eurosoil 2012 – Bari – 6th July 2012



Soil Survey is more than maps

Regional monographs



Eurosoil 2012 – Bari – 6th July 2012

Soil Survey is more than maps

Scientific papers

PEDOLOGIE, VII, pp. 199-203. Gand, 1957.

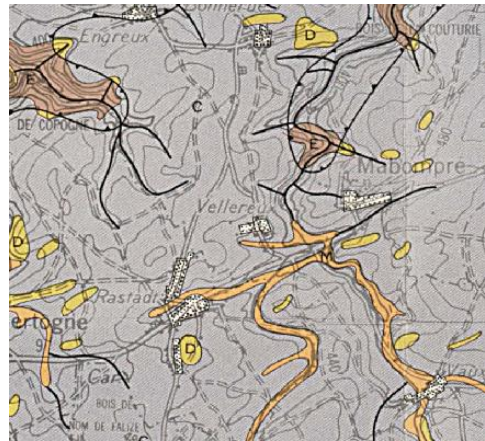
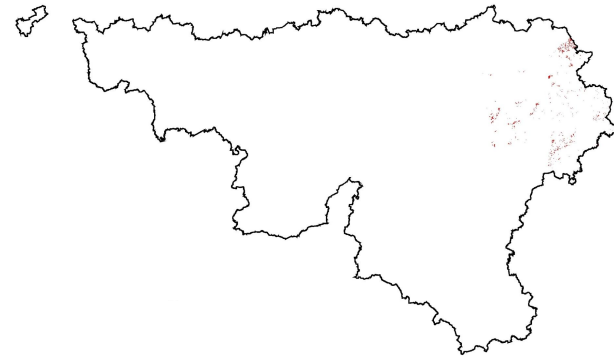
LES SOLS A FRAGIPAN DE LA REGION CONDRUSIENNE(*)

par R. TAVERNIER et R. MARÉCHAL

Centre de Cartographie des Sols, *IRSIA*, Gand



Soil Survey is more than maps



Eurosoil 2012 – Bari – 6th July 2012

Soil Survey is more than maps

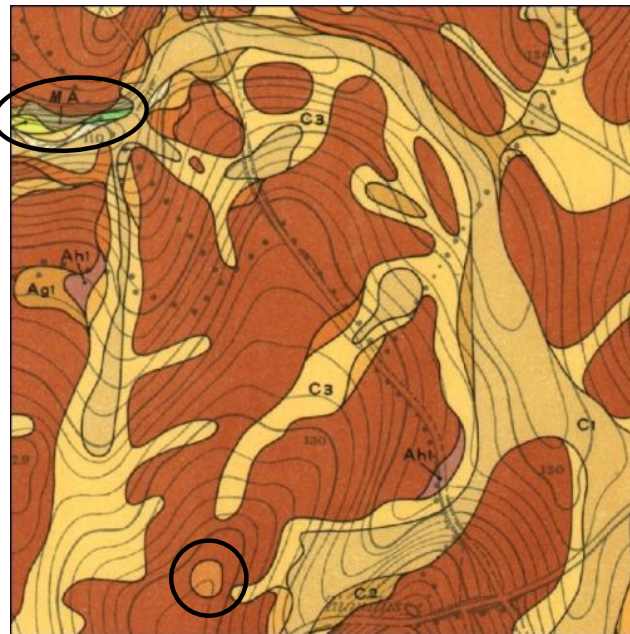
- Unpublished documents
 - ✓ cadastral plans and minutes
 - ✓ field notes
 - ✓ draft maps
 - ✓ excursion reports
 - ✓ letters
 - ✓ proceedings of working groups
 - ✓ course handouts
 - ✓ technical documents
 - ✓ annotations of documents



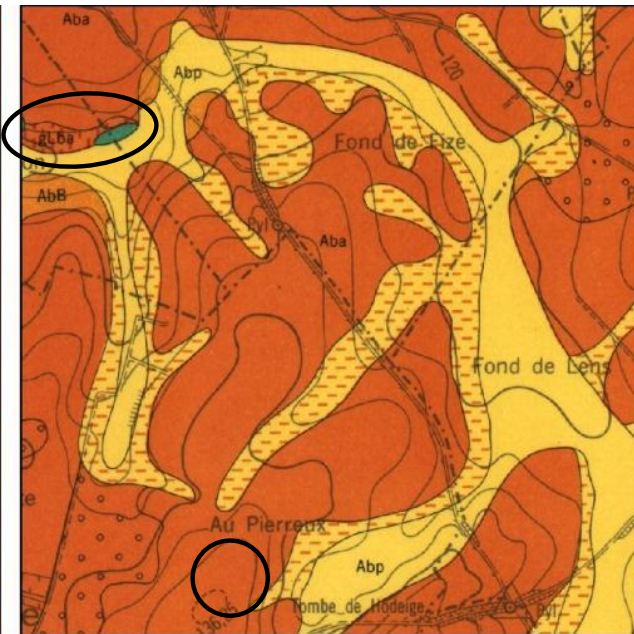
Soil Survey is more than maps

Sheet 120E-Momalle

Preliminary legend (1953)



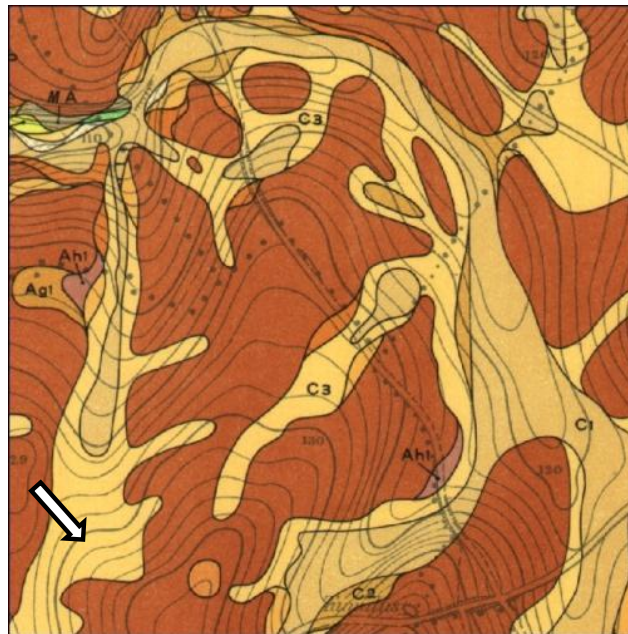
Standardized legend (1964)



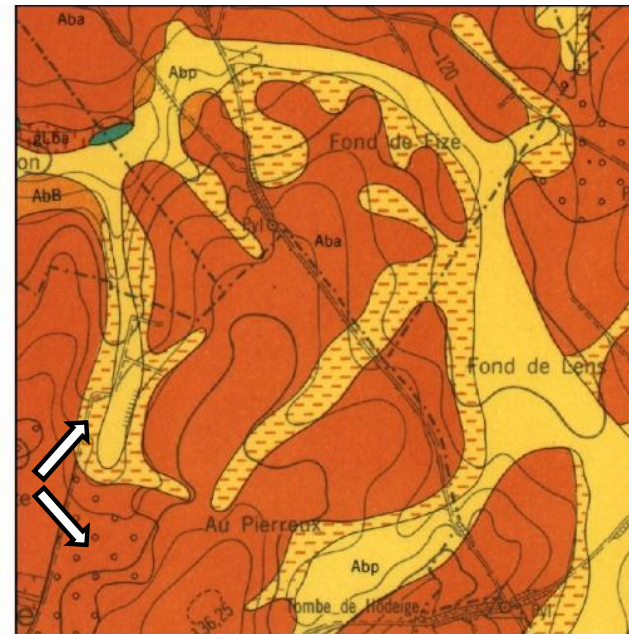
Soil Survey is more than maps

Sheet 120E-Momalle

Preliminary legend (1953)



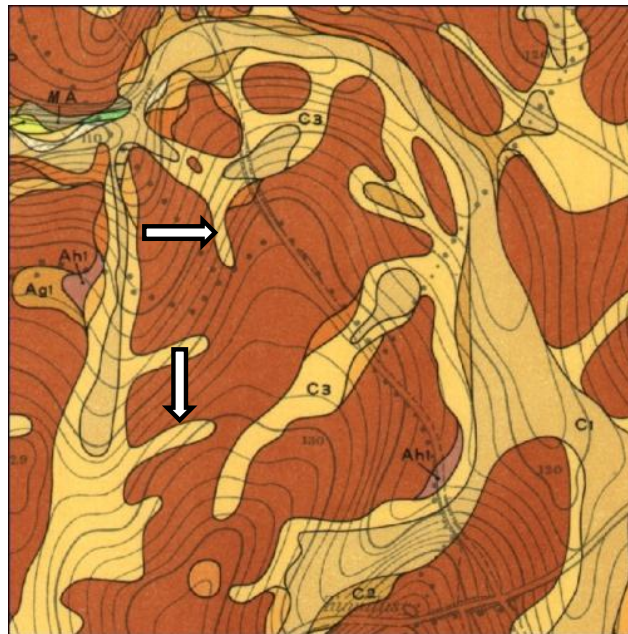
Standardized legend (1964)



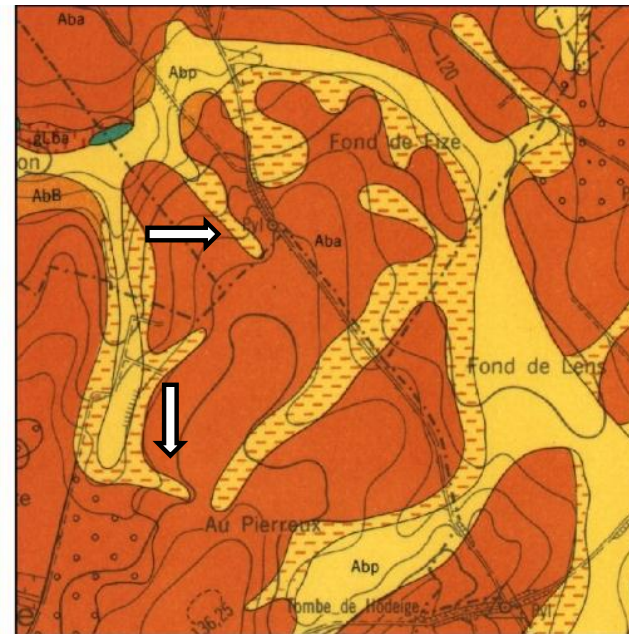
Soil Survey is more than maps

Sheet 120E-Momalle

Preliminary legend (1953)

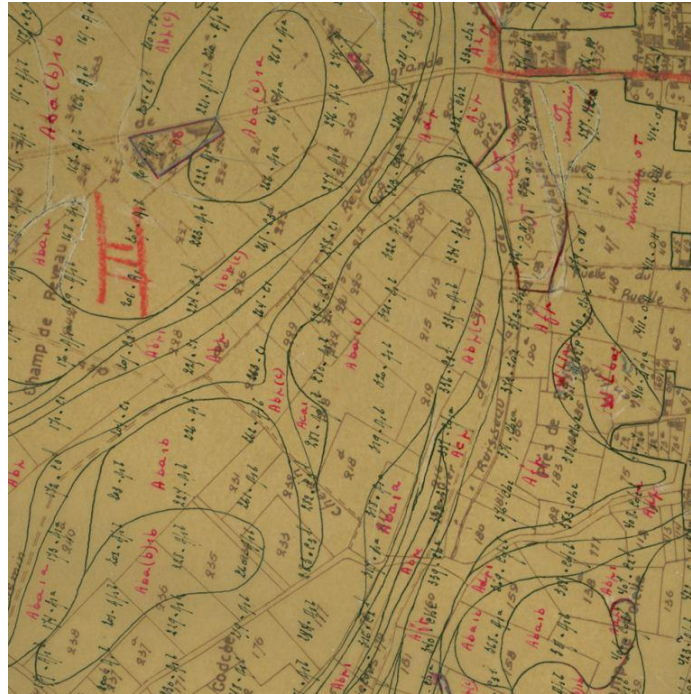


Standardized legend (1964)

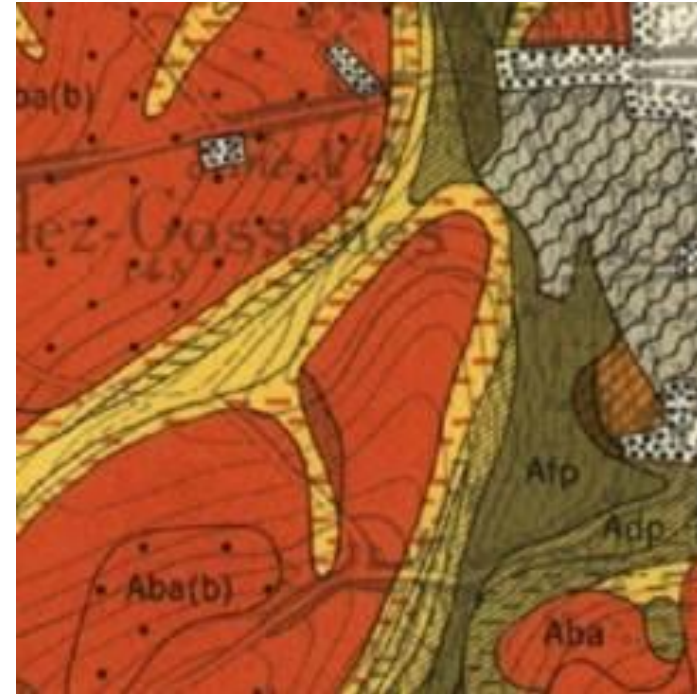


Soil Survey is more than maps

Cadastral plan

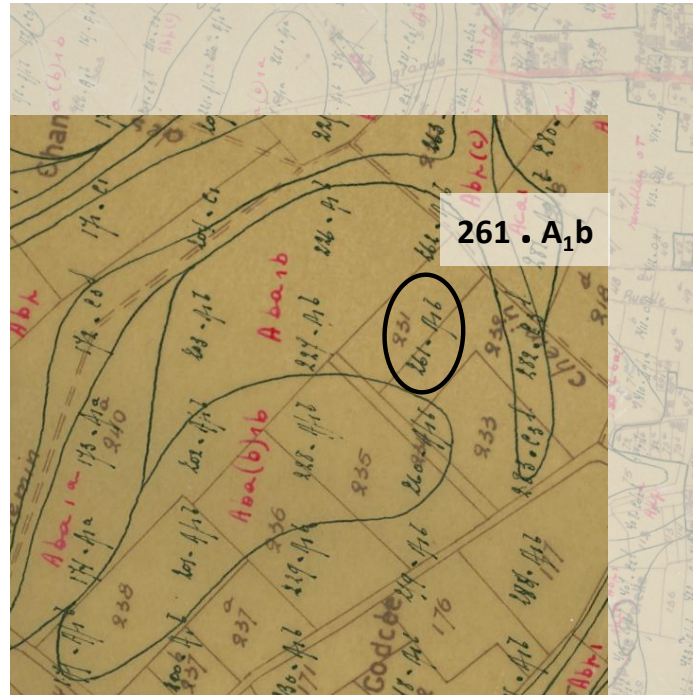


Printed map

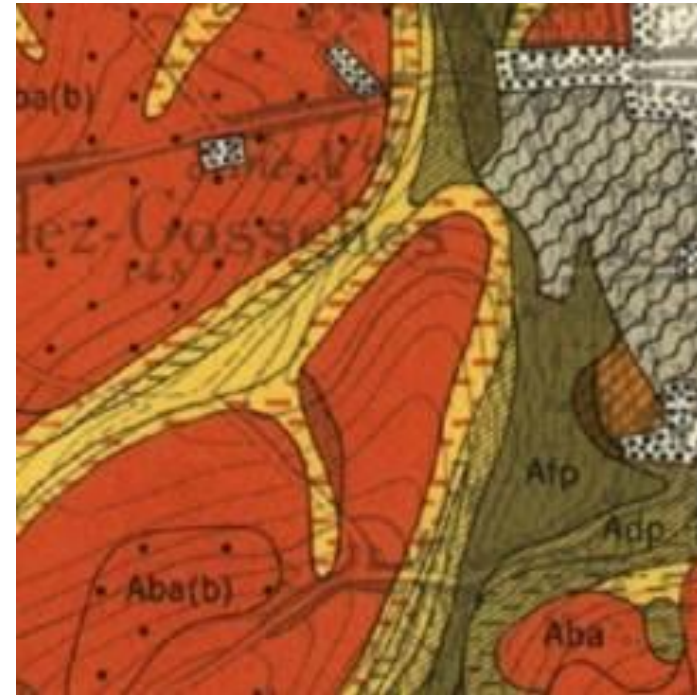


Soil Survey is more than maps

Cadastral plan

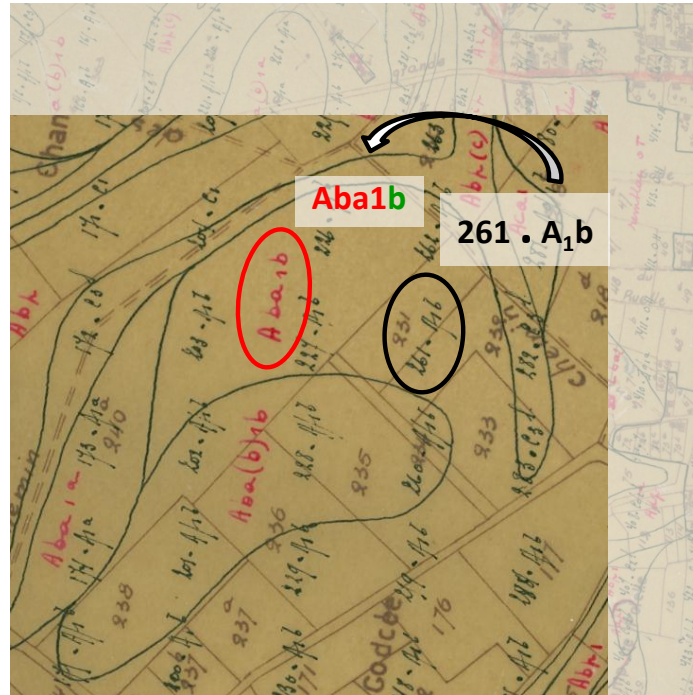


Printed map



Soil Survey is more than maps

Cadastral plan



Printed map



Soil Survey is more than maps



Cadastral plan



Printed map





PRESERVING OUR HERITAGE

Preserving our heritage ...

Why preserving the archives of the soil survey project ?

- ✓ Details of the original documents
- ✓ Historical context
- ✓ Under and beyond the legend
- ✓ ...



... to construct the future

Products benefiting from archives' information:

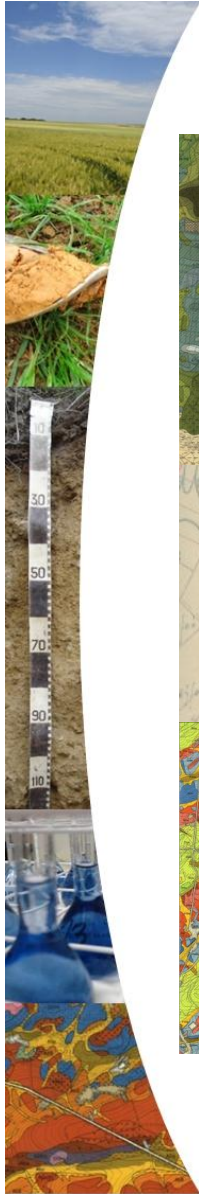
- ✓ Explanatory booklets
- ✓ Soil Information System
- ✓ WRB soil maps
- ✓ ...



Conclusion

**A minimum set of such a legacy
should be preserved, analyzed and
documented as a historical, cultural
and scientific heritage**





Thank you for your attention ...

*... dedicated to those who made the map ...
... and to those who get it lived ...*